



**Bill Barrett Corporation**

## **Bill Barrett Corp.**

Weld Co., CO

Sec.33-T4N-R62W

Anschutz Eq Farms 4-62-33-3225BH2

Wellbore #1

Plan: Design #1

## **Standard Planning Report**

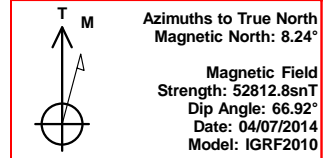
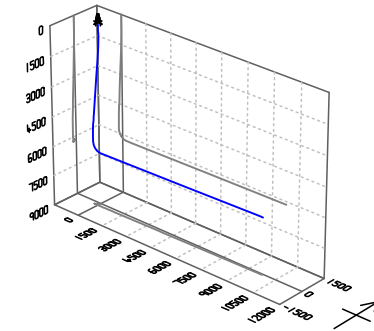
07 April, 2014

# **Archer**



Bill Barrett Corp.  
Project: Weld Co., CO  
Site: Sec.33-T4N-R62W  
Well: Anschutz Eq Farms 4-62-33-3225BH2  
Wellbore: Wellbore #1  
Design: Design #1  
Lat: 40° 16' 12.540 N  
Long: 104° 20' 15.040 W  
Pad GL: 4658.00  
KB: WELL @ 4674.00usft (Original Well Elev)

# Archer



## SECTION DETAILS

MD	Inc	Azi	TVD	+N/-S	+E/-W	Dleg	TFace	VSec	Annotation
0.00	0.00	0.00	0.00	0.00	0.00	0.00	0.00	0.00	
900.00	0.00	0.00	900.00	0.00	0.00	0.00	0.00	0.00	Start Build 1.50
1185.85	4.29	227.92	1185.58	-7.17	-7.93	1.50	227.92	-8.04	Start 3820.06 hold at 1185.85 MD
5005.91	4.29	227.92	4994.96	-198.58	-219.91	0.00	0.00	-222.79	Start Drop -1.50
5291.77	0.00	0.00	5280.54	-205.75	-227.84	1.50	180.00	-230.83	Start 500.02 hold at 5291.77 MD
5791.79	0.00	0.00	5780.56	-205.75	-227.84	0.00	0.00	-230.83	Start Build 12.00
6547.04	90.63	89.16	6258.00	-198.67	254.83	12.00	89.16	251.89	Start 9536.49 hold at 6547.04 MD
16083.53	90.63	89.16	6153.00	-58.89	9789.72	0.00	0.00	9787.80	TD at 16083.53

## WELL DETAILS: Anschutz Eq Farms 4-62-33-3225BH2

+N/-S	+E/-W	Northing	Ground Level: Easting	4658.00 Latitude	Longitude	Slot
0.00	0.00	1343383.310	3324376.061	40° 16' 12.540 N	104° 20' 15.040 W	

## PROJECT DETAILS: Weld Co., CO

Geodetic System: US State Plane 1983  
Datum: North American Datum 1983  
Ellipsoid: GRS 1980  
Zone: Colorado Northern Zone

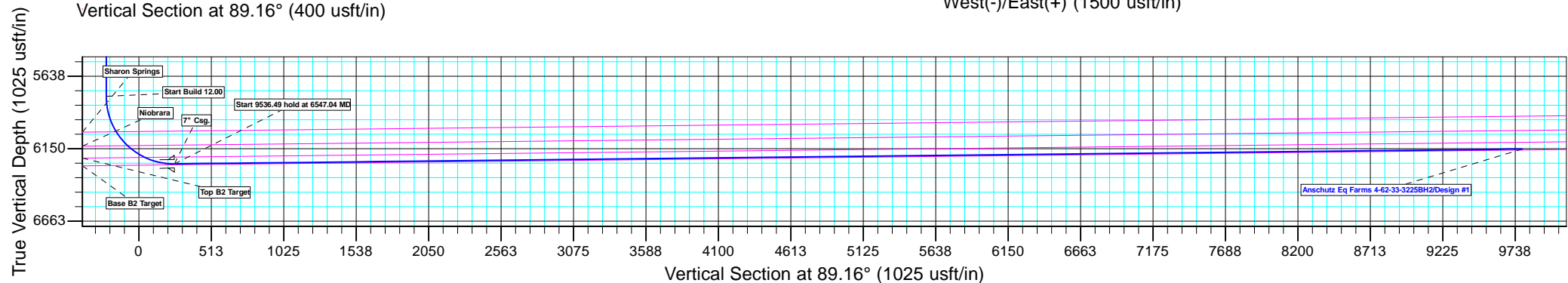
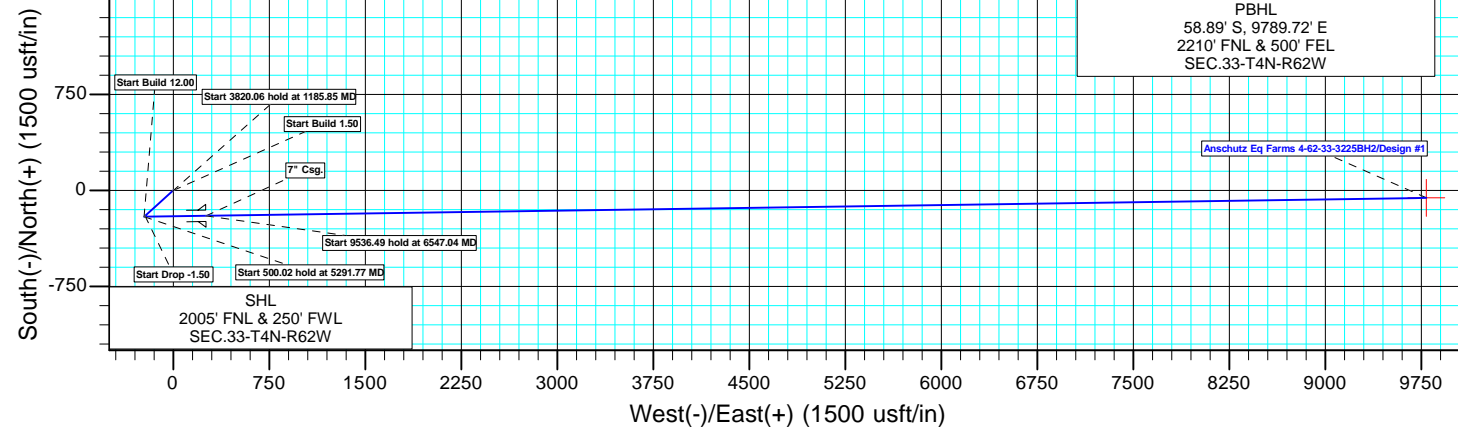
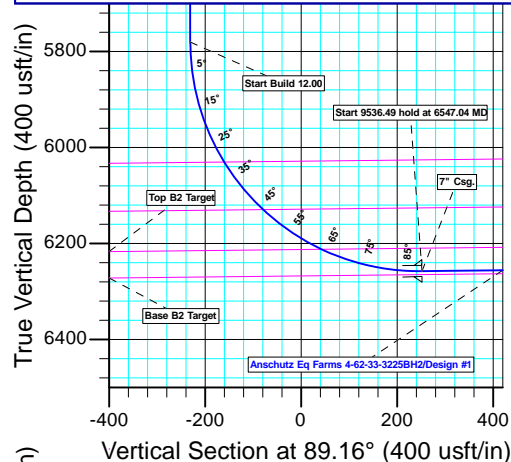
System Datum: Mean Sea Level

## CASING DETAILS

TVD	MD	Name
6258.00	6547.04	7" Csg.

## WELLBORE TARGET DETAILS (LAT/LONG)

Name	TVD	+N/-S	+E/-W	Latitude	Longitude	Shape
Anschutz Eq Farms 4-62-33-3225BH2 tgt	6153.00	-58.89	9789.72	40° 16' 11.939 N	104° 18' 8.741 W	Point



Plan: Design #1 (Anschutz Eq Farms 4-62-33-3225BH2/Wellbore #1)

Created By: Ricky Osburn Date: 10:37, April 07 2014

<b>Database:</b>	EDMDBBW	<b>Local Co-ordinate Reference:</b>	Well Anschutz Eq Farms 4-62-33-3225BH2
<b>Company:</b>	Bill Barrett Corp.	<b>TVD Reference:</b>	WELL @ 4674.00usft (Original Well Elev)
<b>Project:</b>	Weld Co., CO	<b>MD Reference:</b>	WELL @ 4674.00usft (Original Well Elev)
<b>Site:</b>	Sec.33-T4N-R62W	<b>North Reference:</b>	True
<b>Well:</b>	Anschutz Eq Farms 4-62-33-3225BH2	<b>Survey Calculation Method:</b>	Minimum Curvature
<b>Wellbore:</b>	Wellbore #1		
<b>Design:</b>	Design #1		

<b>Project</b>	Weld Co., CO		
<b>Map System:</b>	US State Plane 1983	<b>System Datum:</b>	Mean Sea Level
<b>Geo Datum:</b>	North American Datum 1983		
<b>Map Zone:</b>	Colorado Northern Zone		

Site		Sec.33-T4N-R62W			
Site Position:		Northing:	1,342,329.373 usft	Latitude:	40° 16' 2.122 N
From:	Lat/Long	Easting:	3,324,406.065 usft	Longitude:	104° 20' 14.831 W
Position Uncertainty:	0.00 usft	Slot Radius:	13-3/16"	Grid Convergence:	0.75 °

Well	Anschutz Eq Farms 4-62-33-3225BH2					
Well Position	+N/-S	1,054.24 usft	Northing:	1,343,383.310 usft	Latitude:	40° 16' 12.540 N
	+E/-W	-16.18 usft	Easting:	3,324,376.061 usft	Longitude:	104° 20' 15.040 W
Position Uncertainty		0.00 usft	Wellhead Elevation:	usft	Ground Level:	4,658.00 usft

<b>Wellbore</b>	Wellbore #1				
<b>Magnetics</b>	<b>Model Name</b>	<b>Sample Date</b>	<b>Declination (°)</b>	<b>Dip Angle (°)</b>	<b>Field Strength (nT)</b>
	IGRF2010	2014/04/07	8.24	66.92	52,813

<b>Design</b>	Design #1			
<b>Audit Notes:</b>				
<b>Version:</b>	<b>Phase:</b>	PLAN	<b>Tie On Depth:</b>	0.00
<b>Vertical Section:</b>	<b>Depth From (TVD) (usft)</b>	<b>+N/-S (usft)</b>	<b>+E/-W (usft)</b>	<b>Direction (°)</b>
	0.00	0.00	0.00	89.16

<b>Plan Sections</b>										
Measured Depth (usft)	Inclination (°)	Azimuth (°)	Vertical Depth (usft)	+N/-S (usft)	+E/-W (usft)	Dogleg Rate (°/100usft)	Build Rate (°/100usft)	Turn Rate (°/100usft)	TFO (°)	Target
0.00	0.00	0.00	0.00	0.00	0.00	0.00	0.00	0.00	0.00	
900.00	0.00	0.00	900.00	0.00	0.00	0.00	0.00	0.00	0.00	
1,185.85	4.29	227.92	1,185.58	-7.17	-7.93	1.50	1.50	0.00	227.92	
5,005.91	4.29	227.92	4,994.96	-198.58	-219.91	0.00	0.00	0.00	0.00	
5,291.77	0.00	0.00	5,280.54	-205.75	-227.84	1.50	-1.50	0.00	180.00	
5,791.79	0.00	0.00	5,780.56	-205.75	-227.84	0.00	0.00	0.00	0.00	
6,547.04	90.63	89.16	6,258.00	-198.67	254.83	12.00	12.00	0.00	89.16	Anschutz Eq Farms 4
16,083.53	90.63	89.16	6,153.00	-58.89	9,789.72	0.00	0.00	0.00	0.00	Anschutz Eq Farms 4

<b>Database:</b>	EDMDBBW	<b>Local Co-ordinate Reference:</b>	Well Anschutz Eq Farms 4-62-33-3225BH2
<b>Company:</b>	Bill Barrett Corp.	<b>TVD Reference:</b>	WELL @ 4674.00usft (Original Well Elev)
<b>Project:</b>	Weld Co., CO	<b>MD Reference:</b>	WELL @ 4674.00usft (Original Well Elev)
<b>Site:</b>	Sec.33-T4N-R62W	<b>North Reference:</b>	True
<b>Well:</b>	Anschutz Eq Farms 4-62-33-3225BH2	<b>Survey Calculation Method:</b>	Minimum Curvature
<b>Wellbore:</b>	Wellbore #1		
<b>Design:</b>	Design #1		

Planned Survey									
Measured Depth (usft)	Inclination (°)	Azimuth (°)	Vertical Depth (usft)	+N/-S (usft)	+E/-W (usft)	Vertical Section (usft)	Dogleg Rate (°/100usft)	Build Rate (°/100usft)	Turn Rate (°/100usft)
0.00	0.00	0.00	0.00	0.00	0.00	0.00	0.00	0.00	0.00
100.00	0.00	0.00	100.00	0.00	0.00	0.00	0.00	0.00	0.00
200.00	0.00	0.00	200.00	0.00	0.00	0.00	0.00	0.00	0.00
300.00	0.00	0.00	300.00	0.00	0.00	0.00	0.00	0.00	0.00
400.00	0.00	0.00	400.00	0.00	0.00	0.00	0.00	0.00	0.00
500.00	0.00	0.00	500.00	0.00	0.00	0.00	0.00	0.00	0.00
600.00	0.00	0.00	600.00	0.00	0.00	0.00	0.00	0.00	0.00
700.00	0.00	0.00	700.00	0.00	0.00	0.00	0.00	0.00	0.00
800.00	0.00	0.00	800.00	0.00	0.00	0.00	0.00	0.00	0.00
<b>Start Build 1.50</b>									
900.00	0.00	0.00	900.00	0.00	0.00	0.00	0.00	0.00	0.00
1,000.00	1.50	227.92	999.99	-0.88	-0.97	-0.98	1.50	1.50	0.00
1,100.00	3.00	227.92	1,099.91	-3.51	-3.89	-3.94	1.50	1.50	0.00
<b>Start 3820.06 hold at 1185.85 MD</b>									
1,185.85	4.29	227.92	1,185.58	-7.17	-7.93	-8.04	1.50	1.50	0.00
1,200.00	4.29	227.92	1,199.69	-7.87	-8.72	-8.83	0.00	0.00	0.00
1,300.00	4.29	227.92	1,299.41	-12.89	-14.27	-14.46	0.00	0.00	0.00
1,400.00	4.29	227.92	1,399.13	-17.90	-19.82	-20.08	0.00	0.00	0.00
1,500.00	4.29	227.92	1,498.85	-22.91	-25.37	-25.70	0.00	0.00	0.00
1,600.00	4.29	227.92	1,598.57	-27.92	-30.92	-31.32	0.00	0.00	0.00
1,700.00	4.29	227.92	1,698.29	-32.93	-36.46	-36.94	0.00	0.00	0.00
1,800.00	4.29	227.92	1,798.01	-37.94	-42.01	-42.56	0.00	0.00	0.00
1,900.00	4.29	227.92	1,897.73	-42.95	-47.56	-48.19	0.00	0.00	0.00
2,000.00	4.29	227.92	1,997.45	-47.96	-53.11	-53.81	0.00	0.00	0.00
2,100.00	4.29	227.92	2,097.17	-52.97	-58.66	-59.43	0.00	0.00	0.00
2,200.00	4.29	227.92	2,196.89	-57.98	-64.21	-65.05	0.00	0.00	0.00
2,300.00	4.29	227.92	2,296.61	-62.99	-69.76	-70.67	0.00	0.00	0.00
2,400.00	4.29	227.92	2,396.34	-68.01	-75.31	-76.30	0.00	0.00	0.00
2,500.00	4.29	227.92	2,496.06	-73.02	-80.86	-81.92	0.00	0.00	0.00
2,600.00	4.29	227.92	2,595.78	-78.03	-86.40	-87.54	0.00	0.00	0.00
2,700.00	4.29	227.92	2,695.50	-83.04	-91.95	-93.16	0.00	0.00	0.00
2,800.00	4.29	227.92	2,795.22	-88.05	-97.50	-98.78	0.00	0.00	0.00
2,900.00	4.29	227.92	2,894.94	-93.06	-103.05	-104.40	0.00	0.00	0.00
3,000.00	4.29	227.92	2,994.66	-98.07	-108.60	-110.03	0.00	0.00	0.00
3,100.00	4.29	227.92	3,094.38	-103.08	-114.15	-115.65	0.00	0.00	0.00
3,200.00	4.29	227.92	3,194.10	-108.09	-119.70	-121.27	0.00	0.00	0.00
3,300.00	4.29	227.92	3,293.82	-113.10	-125.25	-126.89	0.00	0.00	0.00
3,400.00	4.29	227.92	3,393.54	-118.11	-130.80	-132.51	0.00	0.00	0.00
3,500.00	4.29	227.92	3,493.26	-123.12	-136.34	-138.13	0.00	0.00	0.00
3,600.00	4.29	227.92	3,592.98	-128.14	-141.89	-143.76	0.00	0.00	0.00
3,700.00	4.29	227.92	3,692.70	-133.15	-147.44	-149.38	0.00	0.00	0.00
3,800.00	4.29	227.92	3,792.42	-138.16	-152.99	-155.00	0.00	0.00	0.00
3,900.00	4.29	227.92	3,892.14	-143.17	-158.54	-160.62	0.00	0.00	0.00
4,000.00	4.29	227.92	3,991.86	-148.18	-164.09	-166.24	0.00	0.00	0.00
4,100.00	4.29	227.92	4,091.58	-153.19	-169.64	-171.86	0.00	0.00	0.00
4,200.00	4.29	227.92	4,191.30	-158.20	-175.19	-177.49	0.00	0.00	0.00
4,300.00	4.29	227.92	4,291.02	-163.21	-180.74	-183.11	0.00	0.00	0.00
4,400.00	4.29	227.92	4,390.74	-168.22	-186.28	-188.73	0.00	0.00	0.00
4,500.00	4.29	227.92	4,490.46	-173.23	-191.83	-194.35	0.00	0.00	0.00
4,600.00	4.29	227.92	4,590.18	-178.24	-197.38	-199.97	0.00	0.00	0.00
4,700.00	4.29	227.92	4,689.90	-183.26	-202.93	-205.60	0.00	0.00	0.00
4,800.00	4.29	227.92	4,789.62	-188.27	-208.48	-211.22	0.00	0.00	0.00
4,900.00	4.29	227.92	4,889.34	-193.28	-214.03	-216.84	0.00	0.00	0.00

<b>Database:</b>	EDMDBBW	<b>Local Co-ordinate Reference:</b>	Well Anschutz Eq Farms 4-62-33-3225BH2
<b>Company:</b>	Bill Barrett Corp.	<b>TVD Reference:</b>	WELL @ 4674.00usft (Original Well Elev)
<b>Project:</b>	Weld Co., CO	<b>MD Reference:</b>	WELL @ 4674.00usft (Original Well Elev)
<b>Site:</b>	Sec.33-T4N-R62W	<b>North Reference:</b>	True
<b>Well:</b>	Anschutz Eq Farms 4-62-33-3225BH2	<b>Survey Calculation Method:</b>	Minimum Curvature
<b>Wellbore:</b>	Wellbore #1		
<b>Design:</b>	Design #1		

Planned Survey									
Measured Depth (usft)	Inclination (°)	Azimuth (°)	Vertical Depth (usft)	+N/-S (usft)	+E/-W (usft)	Vertical Section (usft)	Dogleg Rate (°/100usft)	Build Rate (°/100usft)	Turn Rate (°/100usft)
<b>Start Drop -1.50</b>									
5,005.91	4.29	227.92	4,994.96	-198.58	-219.91	-222.79	0.00	0.00	0.00
5,100.00	2.88	227.92	5,088.86	-202.52	-224.27	-227.21	1.50	-1.50	0.00
<b>Shannon</b>									
5,168.73	1.85	227.92	5,157.52	-204.42	-226.37	-229.34	1.50	-1.50	0.00
5,200.00	1.38	227.92	5,188.78	-205.01	-227.02	-230.00	1.50	-1.50	0.00
<b>Start 500.02 hold at 5291.77 MD</b>									
5,291.77	0.00	0.00	5,280.54	-205.75	-227.84	-230.83	1.50	-1.50	0.00
5,300.00	0.00	0.00	5,288.77	-205.75	-227.84	-230.83	0.00	0.00	0.00
5,400.00	0.00	0.00	5,388.77	-205.75	-227.84	-230.83	0.00	0.00	0.00
5,500.00	0.00	0.00	5,488.77	-205.75	-227.84	-230.83	0.00	0.00	0.00
5,600.00	0.00	0.00	5,588.77	-205.75	-227.84	-230.83	0.00	0.00	0.00
5,700.00	0.00	0.00	5,688.77	-205.75	-227.84	-230.83	0.00	0.00	0.00
<b>Start Build 12.00</b>									
5,791.79	0.00	0.00	5,780.56	-205.75	-227.84	-230.83	0.00	0.00	0.00
5,800.00	0.99	89.16	5,788.77	-205.75	-227.77	-230.76	12.00	12.00	0.00
5,825.00	3.99	89.16	5,813.75	-205.73	-226.69	-229.68	12.00	12.00	0.00
5,850.00	6.99	89.16	5,838.63	-205.70	-224.30	-227.29	12.00	12.00	0.00
5,875.00	9.99	89.16	5,863.35	-205.64	-220.61	-223.60	12.00	12.00	0.00
5,900.00	12.99	89.16	5,887.85	-205.57	-215.63	-218.62	12.00	12.00	0.00
5,925.00	15.99	89.16	5,912.05	-205.48	-209.38	-212.37	12.00	12.00	0.00
5,950.00	18.99	89.16	5,935.90	-205.37	-201.87	-204.86	12.00	12.00	0.00
5,975.00	21.99	89.16	5,959.31	-205.24	-193.12	-196.11	12.00	12.00	0.00
6,000.00	24.99	89.16	5,982.24	-205.09	-183.16	-186.15	12.00	12.00	0.00
6,025.00	27.99	89.16	6,004.61	-204.93	-172.01	-175.00	12.00	12.00	0.00
6,050.00	30.99	89.16	6,026.37	-204.75	-159.71	-162.70	12.00	12.00	0.00
<b>Sharon Springs</b>									
6,055.14	31.60	89.16	6,030.76	-204.71	-157.04	-160.03	12.00	12.00	0.00
6,075.00	33.99	89.16	6,047.46	-204.55	-146.29	-149.27	12.00	12.00	0.00
6,100.00	36.99	89.16	6,067.81	-204.34	-131.78	-134.76	12.00	12.00	0.00
6,125.00	39.99	89.16	6,087.38	-204.11	-116.22	-119.20	12.00	12.00	0.00
6,150.00	42.99	89.16	6,106.10	-203.87	-99.67	-102.64	12.00	12.00	0.00
6,175.00	45.99	89.16	6,123.94	-203.61	-82.15	-85.13	12.00	12.00	0.00
<b>Niobrara</b>									
6,183.62	47.02	89.16	6,129.87	-203.52	-75.90	-78.88	12.00	12.00	0.00
6,200.00	48.99	89.16	6,140.83	-203.34	-63.73	-66.70	12.00	12.00	0.00
6,225.00	51.99	89.16	6,156.73	-203.06	-44.45	-47.42	12.00	12.00	0.00
6,250.00	54.99	89.16	6,171.61	-202.77	-24.36	-27.33	12.00	12.00	0.00
6,275.00	57.99	89.16	6,185.41	-202.46	-3.52	-6.49	12.00	12.00	0.00
6,300.00	60.99	89.16	6,198.10	-202.15	18.02	15.05	12.00	12.00	0.00
6,325.00	63.99	89.16	6,209.65	-201.82	40.18	37.22	12.00	12.00	0.00
<b>Top B2 Target</b>									
6,331.65	64.78	89.16	6,212.52	-201.73	46.18	43.21	12.00	12.00	0.00
6,350.00	66.99	89.16	6,220.02	-201.49	62.92	59.96	12.00	12.00	0.00
6,375.00	69.99	89.16	6,229.19	-201.15	86.18	83.22	12.00	12.00	0.00
6,400.00	72.99	89.16	6,237.13	-200.80	109.88	106.92	12.00	12.00	0.00
6,425.00	75.99	89.16	6,243.81	-200.45	133.96	131.01	12.00	12.00	0.00
6,450.00	78.99	89.16	6,249.23	-200.09	158.36	155.41	12.00	12.00	0.00
6,475.00	81.99	89.16	6,253.36	-199.73	183.01	180.07	12.00	12.00	0.00
6,500.00	84.99	89.16	6,256.20	-199.36	207.85	204.90	12.00	12.00	0.00
6,525.00	87.99	89.16	6,257.73	-199.00	232.79	229.85	12.00	12.00	0.00
<b>Start 9536.49 hold at 6547.04 MD - 7" Csg.</b>									
6,547.04	90.63	89.16	6,258.00	-198.67	254.83	251.89	12.00	12.00	0.00

<b>Database:</b>	EDMDBBW	<b>Local Co-ordinate Reference:</b>	Well Anschutz Eq Farms 4-62-33-3225BH2
<b>Company:</b>	Bill Barrett Corp.	<b>TVD Reference:</b>	WELL @ 4674.00usft (Original Well Elev)
<b>Project:</b>	Weld Co., CO	<b>MD Reference:</b>	WELL @ 4674.00usft (Original Well Elev)
<b>Site:</b>	Sec.33-T4N-R62W	<b>North Reference:</b>	True
<b>Well:</b>	Anschutz Eq Farms 4-62-33-3225BH2	<b>Survey Calculation Method:</b>	Minimum Curvature
<b>Wellbore:</b>	Wellbore #1		
<b>Design:</b>	Design #1		

Planned Survey									
Measured Depth (usft)	Inclination (°)	Azimuth (°)	Vertical Depth (usft)	+N/-S (usft)	+E/-W (usft)	Vertical Section (usft)	Dogleg Rate (°/100usft)	Build Rate (°/100usft)	Turn Rate (°/100usft)
6,600.00	90.63	89.16	6,257.41	-197.90	307.78	304.84	0.00	0.00	0.00
6,700.00	90.63	89.16	6,256.31	-196.43	407.76	404.84	0.00	0.00	0.00
6,800.00	90.63	89.16	6,255.21	-194.97	507.74	504.83	0.00	0.00	0.00
6,900.00	90.63	89.16	6,254.11	-193.50	607.73	604.83	0.00	0.00	0.00
7,000.00	90.63	89.16	6,253.01	-192.03	707.71	704.82	0.00	0.00	0.00
7,100.00	90.63	89.16	6,251.91	-190.57	807.69	804.81	0.00	0.00	0.00
7,200.00	90.63	89.16	6,250.81	-189.10	907.68	904.81	0.00	0.00	0.00
7,300.00	90.63	89.16	6,249.71	-187.64	1,007.66	1,004.80	0.00	0.00	0.00
7,400.00	90.63	89.16	6,248.60	-186.17	1,107.64	1,104.80	0.00	0.00	0.00
7,500.00	90.63	89.16	6,247.50	-184.71	1,207.63	1,204.79	0.00	0.00	0.00
7,600.00	90.63	89.16	6,246.40	-183.24	1,307.61	1,304.78	0.00	0.00	0.00
7,700.00	90.63	89.16	6,245.30	-181.77	1,407.59	1,404.78	0.00	0.00	0.00
7,800.00	90.63	89.16	6,244.20	-180.31	1,507.58	1,504.77	0.00	0.00	0.00
7,900.00	90.63	89.16	6,243.10	-178.84	1,607.56	1,604.77	0.00	0.00	0.00
8,000.00	90.63	89.16	6,242.00	-177.38	1,707.54	1,704.76	0.00	0.00	0.00
8,100.00	90.63	89.16	6,240.90	-175.91	1,807.53	1,804.75	0.00	0.00	0.00
8,200.00	90.63	89.16	6,239.80	-174.45	1,907.51	1,904.75	0.00	0.00	0.00
8,300.00	90.63	89.16	6,238.70	-172.98	2,007.49	2,004.74	0.00	0.00	0.00
8,400.00	90.63	89.16	6,237.59	-171.51	2,107.48	2,104.74	0.00	0.00	0.00
8,500.00	90.63	89.16	6,236.49	-170.05	2,207.46	2,204.73	0.00	0.00	0.00
8,600.00	90.63	89.16	6,235.39	-168.58	2,307.44	2,304.72	0.00	0.00	0.00
8,700.00	90.63	89.16	6,234.29	-167.12	2,407.43	2,404.72	0.00	0.00	0.00
8,800.00	90.63	89.16	6,233.19	-165.65	2,507.41	2,504.71	0.00	0.00	0.00
8,900.00	90.63	89.16	6,232.09	-164.19	2,607.39	2,604.70	0.00	0.00	0.00
9,000.00	90.63	89.16	6,230.99	-162.72	2,707.38	2,704.70	0.00	0.00	0.00
9,100.00	90.63	89.16	6,229.89	-161.25	2,807.36	2,804.69	0.00	0.00	0.00
9,200.00	90.63	89.16	6,228.79	-159.79	2,907.34	2,904.69	0.00	0.00	0.00
9,300.00	90.63	89.16	6,227.69	-158.32	3,007.32	3,004.68	0.00	0.00	0.00
9,400.00	90.63	89.16	6,226.58	-156.86	3,107.31	3,104.67	0.00	0.00	0.00
9,500.00	90.63	89.16	6,225.48	-155.39	3,207.29	3,204.67	0.00	0.00	0.00
9,600.00	90.63	89.16	6,224.38	-153.92	3,307.27	3,304.66	0.00	0.00	0.00
9,700.00	90.63	89.16	6,223.28	-152.46	3,407.26	3,404.66	0.00	0.00	0.00
9,800.00	90.63	89.16	6,222.18	-150.99	3,507.24	3,504.65	0.00	0.00	0.00
9,900.00	90.63	89.16	6,221.08	-149.53	3,607.22	3,604.64	0.00	0.00	0.00
10,000.00	90.63	89.16	6,219.98	-148.06	3,707.21	3,704.64	0.00	0.00	0.00
10,100.00	90.63	89.16	6,218.88	-146.60	3,807.19	3,804.63	0.00	0.00	0.00
10,200.00	90.63	89.16	6,217.78	-145.13	3,907.17	3,904.63	0.00	0.00	0.00
10,300.00	90.63	89.16	6,216.68	-143.66	4,007.16	4,004.62	0.00	0.00	0.00
10,400.00	90.63	89.16	6,215.57	-142.20	4,107.14	4,104.61	0.00	0.00	0.00
10,500.00	90.63	89.16	6,214.47	-140.73	4,207.12	4,204.61	0.00	0.00	0.00
10,600.00	90.63	89.16	6,213.37	-139.27	4,307.11	4,304.60	0.00	0.00	0.00
10,700.00	90.63	89.16	6,212.27	-137.80	4,407.09	4,404.60	0.00	0.00	0.00
10,800.00	90.63	89.16	6,211.17	-136.34	4,507.07	4,504.59	0.00	0.00	0.00
10,900.00	90.63	89.16	6,210.07	-134.87	4,607.06	4,604.58	0.00	0.00	0.00
11,000.00	90.63	89.16	6,208.97	-133.40	4,707.04	4,704.58	0.00	0.00	0.00
11,100.00	90.63	89.16	6,207.87	-131.94	4,807.02	4,804.57	0.00	0.00	0.00
11,200.00	90.63	89.16	6,206.77	-130.47	4,907.01	4,904.57	0.00	0.00	0.00
11,300.00	90.63	89.16	6,205.66	-129.01	5,006.99	5,004.56	0.00	0.00	0.00
11,400.00	90.63	89.16	6,204.56	-127.54	5,106.97	5,104.55	0.00	0.00	0.00
11,500.00	90.63	89.16	6,203.46	-126.08	5,206.96	5,204.55	0.00	0.00	0.00
11,600.00	90.63	89.16	6,202.36	-124.61	5,306.94	5,304.54	0.00	0.00	0.00
11,700.00	90.63	89.16	6,201.26	-123.14	5,406.92	5,404.54	0.00	0.00	0.00
11,800.00	90.63	89.16	6,200.16	-121.68	5,506.90	5,504.53	0.00	0.00	0.00
11,900.00	90.63	89.16	6,199.06	-120.21	5,606.89	5,604.52	0.00	0.00	0.00

<b>Database:</b>	EDMDBBW	<b>Local Co-ordinate Reference:</b>	Well Anschutz Eq Farms 4-62-33-3225BH2
<b>Company:</b>	Bill Barrett Corp.	<b>TVD Reference:</b>	WELL @ 4674.00usft (Original Well Elev)
<b>Project:</b>	Weld Co., CO	<b>MD Reference:</b>	WELL @ 4674.00usft (Original Well Elev)
<b>Site:</b>	Sec.33-T4N-R62W	<b>North Reference:</b>	True
<b>Well:</b>	Anschutz Eq Farms 4-62-33-3225BH2	<b>Survey Calculation Method:</b>	Minimum Curvature
<b>Wellbore:</b>	Wellbore #1		
<b>Design:</b>	Design #1		

Planned Survey									
Measured Depth (usft)	Inclination (°)	Azimuth (°)	Vertical Depth (usft)	+N/-S (usft)	+E/-W (usft)	Vertical Section (usft)	Dogleg Rate (°/100usft)	Build Rate (°/100usft)	Turn Rate (°/100usft)
12,000.00	90.63	89.16	6,197.96	-118.75	5,706.87	5,704.52	0.00	0.00	0.00
12,100.00	90.63	89.16	6,196.86	-117.28	5,806.85	5,804.51	0.00	0.00	0.00
12,200.00	90.63	89.16	6,195.76	-115.81	5,906.84	5,904.50	0.00	0.00	0.00
12,300.00	90.63	89.16	6,194.65	-114.35	6,006.82	6,004.50	0.00	0.00	0.00
12,400.00	90.63	89.16	6,193.55	-112.88	6,106.80	6,104.49	0.00	0.00	0.00
12,500.00	90.63	89.16	6,192.45	-111.42	6,206.79	6,204.49	0.00	0.00	0.00
12,600.00	90.63	89.16	6,191.35	-109.95	6,306.77	6,304.48	0.00	0.00	0.00
12,700.00	90.63	89.16	6,190.25	-108.49	6,406.75	6,404.47	0.00	0.00	0.00
12,800.00	90.63	89.16	6,189.15	-107.02	6,506.74	6,504.47	0.00	0.00	0.00
12,900.00	90.63	89.16	6,188.05	-105.55	6,606.72	6,604.46	0.00	0.00	0.00
13,000.00	90.63	89.16	6,186.95	-104.09	6,706.70	6,704.46	0.00	0.00	0.00
13,100.00	90.63	89.16	6,185.85	-102.62	6,806.69	6,804.45	0.00	0.00	0.00
13,200.00	90.63	89.16	6,184.75	-101.16	6,906.67	6,904.44	0.00	0.00	0.00
13,300.00	90.63	89.16	6,183.64	-99.69	7,006.65	7,004.44	0.00	0.00	0.00
13,400.00	90.63	89.16	6,182.54	-98.23	7,106.64	7,104.43	0.00	0.00	0.00
13,500.00	90.63	89.16	6,181.44	-96.76	7,206.62	7,204.43	0.00	0.00	0.00
13,600.00	90.63	89.16	6,180.34	-95.29	7,306.60	7,304.42	0.00	0.00	0.00
13,700.00	90.63	89.16	6,179.24	-93.83	7,406.59	7,404.41	0.00	0.00	0.00
13,800.00	90.63	89.16	6,178.14	-92.36	7,506.57	7,504.41	0.00	0.00	0.00
13,900.00	90.63	89.16	6,177.04	-90.90	7,606.55	7,604.40	0.00	0.00	0.00
14,000.00	90.63	89.16	6,175.94	-89.43	7,706.53	7,704.40	0.00	0.00	0.00
14,100.00	90.63	89.16	6,174.84	-87.97	7,806.52	7,804.39	0.00	0.00	0.00
14,200.00	90.63	89.16	6,173.74	-86.50	7,906.50	7,904.38	0.00	0.00	0.00
14,300.00	90.63	89.16	6,172.63	-85.03	8,006.48	8,004.38	0.00	0.00	0.00
14,400.00	90.63	89.16	6,171.53	-83.57	8,106.47	8,104.37	0.00	0.00	0.00
14,500.00	90.63	89.16	6,170.43	-82.10	8,206.45	8,204.37	0.00	0.00	0.00
14,600.00	90.63	89.16	6,169.33	-80.64	8,306.43	8,304.36	0.00	0.00	0.00
14,700.00	90.63	89.16	6,168.23	-79.17	8,406.42	8,404.35	0.00	0.00	0.00
14,800.00	90.63	89.16	6,167.13	-77.70	8,506.40	8,504.35	0.00	0.00	0.00
14,900.00	90.63	89.16	6,166.03	-76.24	8,606.38	8,604.34	0.00	0.00	0.00
15,000.00	90.63	89.16	6,164.93	-74.77	8,706.37	8,704.34	0.00	0.00	0.00
15,100.00	90.63	89.16	6,163.83	-73.31	8,806.35	8,804.33	0.00	0.00	0.00
15,200.00	90.63	89.16	6,162.73	-71.84	8,906.33	8,904.32	0.00	0.00	0.00
15,300.00	90.63	89.16	6,161.62	-70.38	9,006.32	9,004.32	0.00	0.00	0.00
15,400.00	90.63	89.16	6,160.52	-68.91	9,106.30	9,104.31	0.00	0.00	0.00
15,500.00	90.63	89.16	6,159.42	-67.44	9,206.28	9,204.30	0.00	0.00	0.00
15,600.00	90.63	89.16	6,158.32	-65.98	9,306.27	9,304.30	0.00	0.00	0.00
15,700.00	90.63	89.16	6,157.22	-64.51	9,406.25	9,404.29	0.00	0.00	0.00
15,800.00	90.63	89.16	6,156.12	-63.05	9,506.23	9,504.29	0.00	0.00	0.00
15,900.00	90.63	89.16	6,155.02	-61.58	9,606.22	9,604.28	0.00	0.00	0.00
16,000.00	90.63	89.16	6,153.92	-60.12	9,706.20	9,704.27	0.00	0.00	0.00
<b>TD at 16083.53</b>									
16,083.53	90.63	89.16	6,153.00	-58.89	9,789.72	9,787.80	0.00	0.00	0.00

Design Targets									
Target Name	Dip Angle (°)	Dip Dir. (°)	TVD (usft)	+N/-S (usft)	+E/-W (usft)	Northing (usft)	Easting (usft)	Latitude	Longitude
- hit/miss target									
- Shape									
Anschutz Eq Farms 4-62	0.00	0.00	6,153.00	-58.89	9,789.72	1,343,452.759	3,334,165.709	40° 16' 11.939 N	104° 18' 8.741 W
- plan hits target center									
- Point									



<b>Database:</b>	EDMDBBW	<b>Local Co-ordinate Reference:</b>	Well Anschutz Eq Farms 4-62-33-3225BH2
<b>Company:</b>	Bill Barrett Corp.	<b>TVD Reference:</b>	WELL @ 4674.00usft (Original Well Elev)
<b>Project:</b>	Weld Co., CO	<b>MD Reference:</b>	WELL @ 4674.00usft (Original Well Elev)
<b>Site:</b>	Sec.33-T4N-R62W	<b>North Reference:</b>	True
<b>Well:</b>	Anschutz Eq Farms 4-62-33-3225BH2	<b>Survey Calculation Method:</b>	Minimum Curvature
<b>Wellbore:</b>	Wellbore #1		
<b>Design:</b>	Design #1		

Casing Points					
Measured Depth (usft)	Vertical Depth (usft)	Name	Casing Diameter (")	Hole Diameter (")	
6,547.04	6,258.00	7" Csg.	7	8-3/4	

Formations					
Measured Depth (usft)	Vertical Depth (usft)	Name	Lithology	Dip (°)	Dip Direction (°)
5,168.73	5,155.00	Shannon		-0.63	89.16
6,055.14	6,029.00	Sharon Springs		-0.63	89.16
6,183.62	6,129.00	Niobrara		-0.63	89.16
6,331.65	6,213.00	Top B2 Target		-0.63	89.16

Plan Annotations					
Measured Depth (usft)	Vertical Depth (usft)	Local Coordinates			
		+N/-S (usft)	+E/-W (usft)	Comment	
900.00	900.00	0.00	0.00	Start Build 1.50	
1,185.85	1,185.58	-7.17	-7.93	Start 3820.06 hold at 1185.85 MD	
5,005.91	4,994.96	-198.58	-219.91	Start Drop -1.50	
5,291.77	5,280.54	-205.75	-227.84	Start 500.02 hold at 5291.77 MD	
5,791.79	5,780.56	-205.75	-227.84	Start Build 12.00	
6,547.04	6,258.00	-198.67	254.83	Start 9536.49 hold at 6547.04 MD	
16,083.53	6,153.00	-58.89	9,789.72	TD at 16083.53	