

T4N, R62W, 6th P.M.

BILL BARRETT CORPORATION

Well location, ANSCHUTZ EQUUS FARMS S2N2 4-62-33\_34 PAD #4-62-33-1724CH2, located as shown in the SW 1/4 NW 1/4 of Section 33, T4N, R62W, 6th P.M., Weld County, Colorado.

BASIS OF ELEVATION

SPOT ELEVATION LOCATED AT THE NORTHEAST CORNER OF SECTION 24, T5N, R62W, 6th. P.M. TAKEN FROM THE POINT OF ROCKS, QUADRANGLE, COLORADO, WELD COUNTY, 7.5 MINUTE QUAD (TOPOGRAPHIC MAP) PUBLISHED BY THE UNITED STATES DEPARTMENT OF THE INTERIOR, GEOLOGICAL SURVEY. SAID ELEVATION IS MARKED AS BEING 4530 FEET.

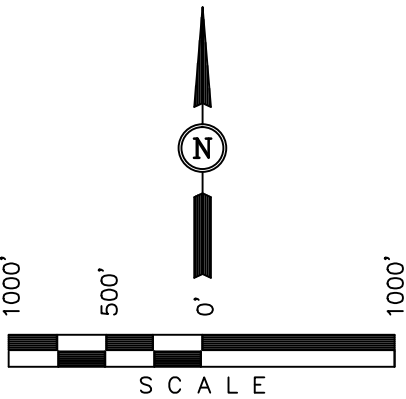
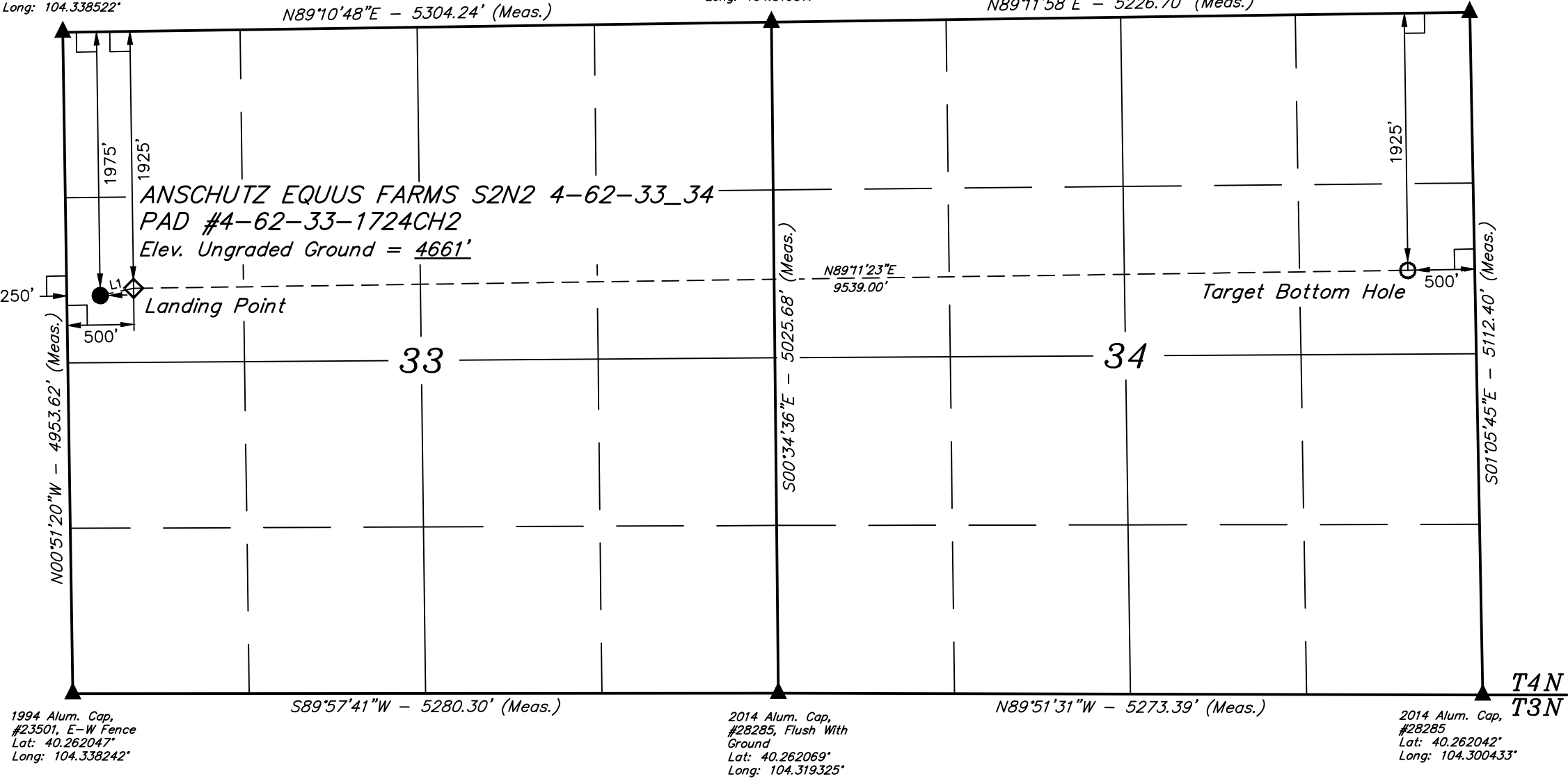
BASIS OF BEARINGS

BASIS OF BEARINGS IS A G.P.S. OBSERVATION.

2014 Alum. Cap,  
#28285, 0.4' High,  
In Line With East Fence  
Lat: 40.275642°  
Long: 104.338522°

2011 Alum. Cap,  
#17492, 0.4' High  
Lat: 40.275861°  
Long: 104.319517°

2011 Alum. Cap,  
#17492, 0.3' High  
Lat: 40.276069°  
Long: 104.300792°



LINE TABLE		
LINE	DIRECTION	LENGTH
L1	N77°54'19"E	254.94'

CERTIFICATION

THIS IS TO CERTIFY THAT THE ABOVE PLAT WAS PREPARED FROM FIELD NOTES OF ACTUAL SURVEYS MADE BY ME OR UNDER MY SUPERVISION AND THAT THE SAME ARE TRUE AND CORRECT TO THE BEST OF MY KNOWLEDGE AND BELIEF.

REGISTERED LAND SURVEYOR  
REGISTRATION NO. 28285  
STATE OF COLORADO  
03-05-14

LEGEND:

- 90° SYMBOL
- PROPOSED WELL HEAD.
- SECTION CORNERS LOCATED.
- PROPOSED TARGET BOTTOM HOLE.
- PROPOSED LANDING POINT.

PDOP = 1.6

NAD 83 (TARGET BOTTOM HOLE)	NAD 83 (LANDING POINT)	NAD 83 (SURFACE LOCATION)
LATITUDE = 40°16'14.76" (40.270767)	LATITUDE = 40°16'13.37" (40.270381)	LATITUDE = 40°16'12.84" (40.270233)
LONGITUDE = 104°18'08.82" (104.302450)	LONGITUDE = 104°20'11.84" (104.336622)	LONGITUDE = 104°20'15.05" (104.337514)
NAD 27 (TARGET BOTTOM HOLE)	NAD 27 (LANDING POINT)	NAD 27 (SURFACE LOCATION)
LATITUDE = 40°16'14.83" (40.270786)	LATITUDE = 40°16'13.44" (40.270400)	LATITUDE = 40°16'12.91" (40.270253)
LONGITUDE = 104°18'06.99" (104.301942)	LONGITUDE = 104°20'10.00" (104.336111)	LONGITUDE = 104°20'13.22" (104.337006)
STATE PLANE NAD 83	STATE PLANE NAD 83	STATE PLANE NAD 83
N: 1343738.14 E: 3334156.05	N: 1343470.13 E: 3324623.32	N: 1343413.25 E: 3324374.88
STATE PLANE NAD 27	STATE PLANE NAD 27	STATE PLANE NAD 27
N: 343740.96 E: 2334306.41	N: 343472.88 E: 2324773.68	N: 3434416.00 E: 2324525.24

UINTAH ENGINEERING & LAND SURVEYING

85 SOUTH 200 EAST - VERNAL, UTAH 84078

(435) 789-1017

SCALE 1" = 1000'	DATE SURVEYED: 01-23-14	DATE DRAWN: 02-18-14
PARTY DAVE SWANSON C.J. J.S.	REFERENCES G.L.O. PLAT	
WEATHER COLD	FILE BILL BARRETT CORPORATION	