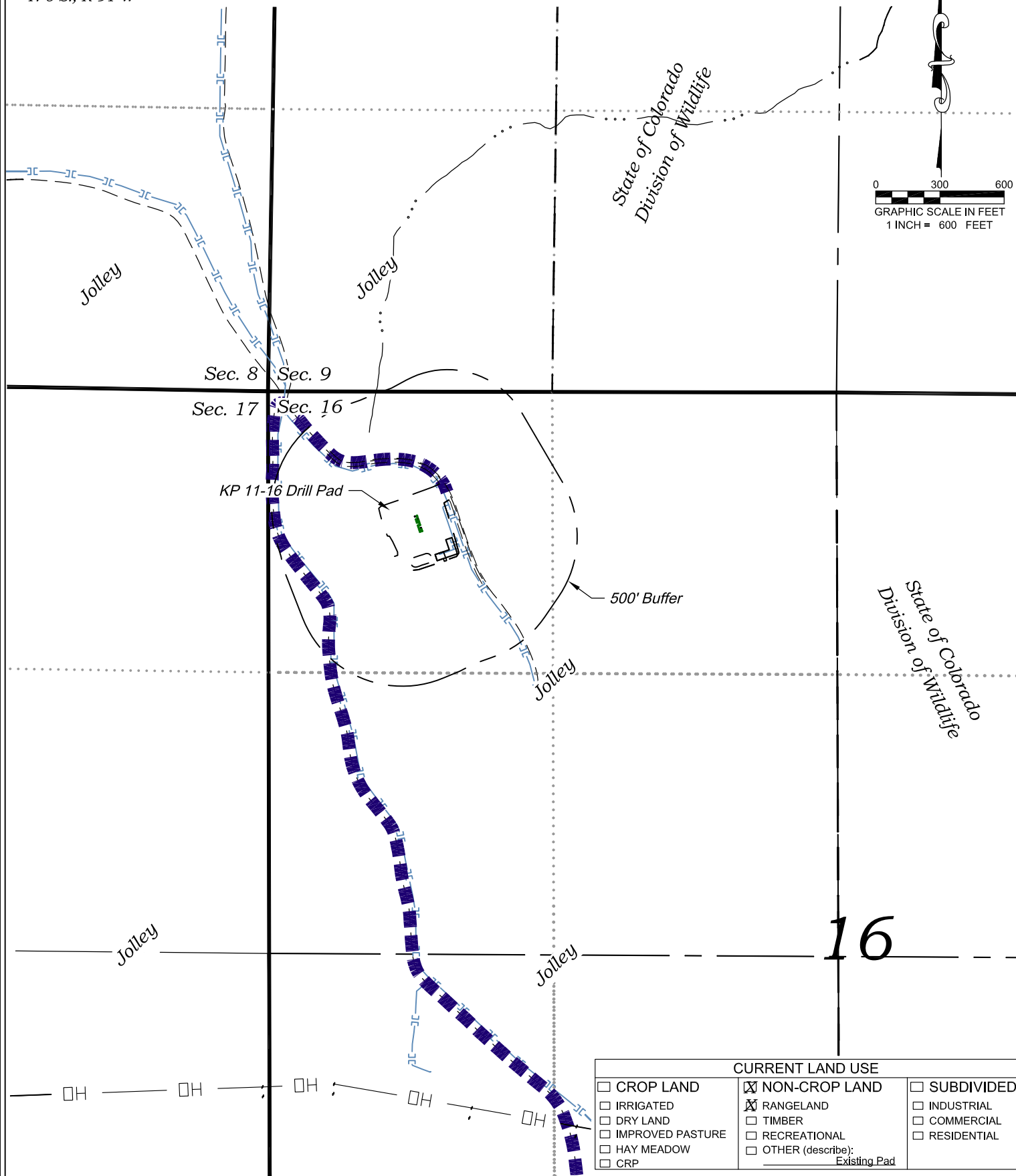


Section 16
T. 6 S., R 91 W



CURRENT LAND USE		
<input type="checkbox"/> CROP LAND	<input checked="" type="checkbox"/> NON-CROP LAND	<input type="checkbox"/> SUBDIVIDED
<input type="checkbox"/> IRRIGATED	<input checked="" type="checkbox"/> RANGELAND	<input type="checkbox"/> INDUSTRIAL
<input type="checkbox"/> DRY LAND	<input type="checkbox"/> TIMBER	<input type="checkbox"/> COMMERCIAL
<input type="checkbox"/> IMPROVED PASTURE	<input type="checkbox"/> RECREATIONAL	<input type="checkbox"/> RESIDENTIAL
<input type="checkbox"/> HAY MEADOW	<input type="checkbox"/> OTHER (describe):	
<input type="checkbox"/> CRP	Existing Pad	

REVISED: 4/21/14

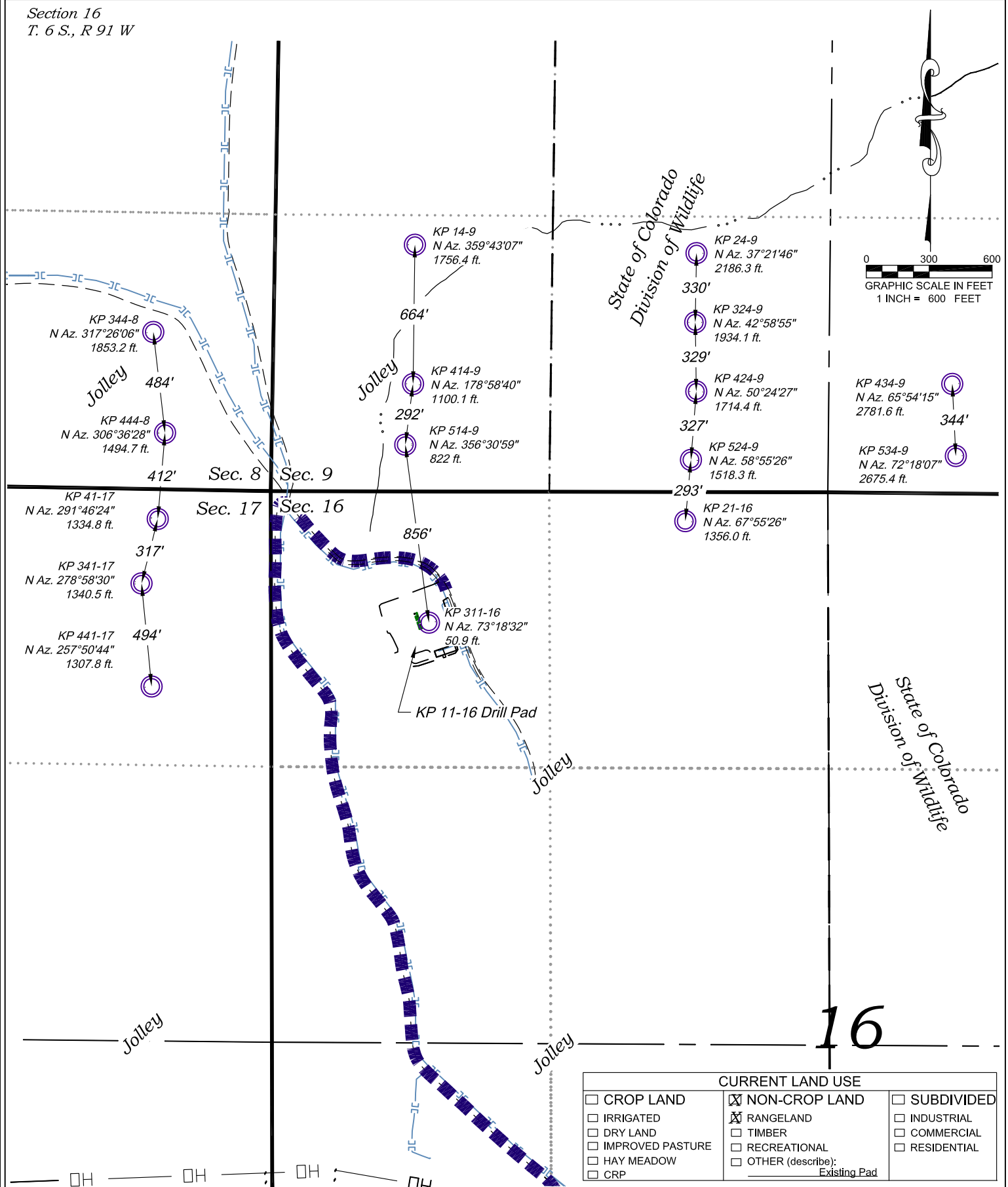
136 East Third Street
Rifle, Colorado 81650
Ph. (970) 625-2720
Fax (970) 625-2773



BOOKCLIFF
Survey Services, Inc.

SCALE: 1" = 600'
DATE: 1/24/11
PLAT: 6 of 7
PROJECT: Kokopelli
DFT: cs

Construction Plan Prepared for:
WPXENERGY WPX Energy Rocky Mountain, LLC
KP 11-16 Drill Pad - Plat 6
LOCATION




REVISED: 4/21/14

136 East Third Street
Rifle, Colorado 81650
Ph. (970) 625-2720
Fax (970) 625-2773



BOOKCLIFF
Survey Services, Inc.

SCALE: 1" = 600'
DATE: 4/21/14
PLAT: 6A of 7
PROJECT: Kokopelli
DFT: CS

Construction Plan Prepared for:  WPX Energy Rocky Mountain, LLC
<i>KP 11-16 Drill Pad - Plat 6A</i> LOCATION SUPPLEMENT

Visible Improvements to Well Head (ft.)

Description	Building	Building Unit	High Occu. Building	DOAA	Public Road	Above Ground Utility	Railroad	Property Line
KP 514-9	>5280	>5280	>5280	>5280	62° 3804	188° 2666	>5280	270° 690
KP 344-8	>5280	>5280	>5280	>5280	62° 3805	188° 2659	>5280	270° 692
KP 444-8	>5280	>5280	>5280	>5280	62° 3806	188° 2653	>5280	270° 695
KP 41-17	>5280	>5280	>5280	>5280	62° 3809	189° 2639	>5280	270° 700
KP 524-9	>5280	>5280	>5280	>5280	62° 3810	189° 2633	>5280	270° 702
KP 311-16	>5280	>5280	>5280	>5280	62° 3811	189° 2626	>5280	270° 704
KP 341-17	>5280	>5280	>5280	>5280	61° 3812	189° 2619	>5280	270° 707
KP 441-17	>5280	>5280	>5280	>5280	61° 3814	189° 2613	>5280	270° 709
KP 14-9	>5280	>5280	>5280	>5280	62° 3791	188° 2684	>5280	270° 695
KP 414-9	>5280	>5280	>5280	>5280	62° 3793	188° 2677	>5280	270° 697
KP 24-9	>5280	>5280	>5280	>5280	62° 3795	189° 2664	>5280	270° 702
KP 324-9	>5280	>5280	>5280	>5280	62° 3796	189° 2657	>5280	270° 704
KP 424-9	>5280	>5280	>5280	>5280	62° 3798	189° 2651	>5280	270° 707
KP 434-9	>5280	>5280	>5280	>5280	62° 3799	189° 2644	>5280	270° 709
KP 534-9	>5280	>5280	>5280	>5280	61° 3803	189° 2624	>5280	270° 716
KP 21-16	>5280	>5280	>5280	>5280	61° 3804	189° 2617	>5280	270° 719

Production Equipment

Seperators	>5280	>5280	>5280	>5280	60° 3697	190° 2492	>5280	270° 779
Tanks	>5280	>5280	>5280	>5280	60° 3825	188° 2419	>5280	270° 605

REVISED: 4/21/14

Construction Plan Prepared for:
WPXENERGY WPX Energy Rocky Mountain, LLC

136 East Third Street
Rifle, Colorado 81650
Ph. (970) 625-2720
Fax (970) 625-2773



BOOKCLIFF
Survey Services, Inc.

SCALE: 1" = 600'
DATE: 4/21/14
PLAT: 6B of 7
PROJECT: Kokopelli
DFT: cs

KP 11-16 Drill Pad - Plat 6B
LOCATION TABLE