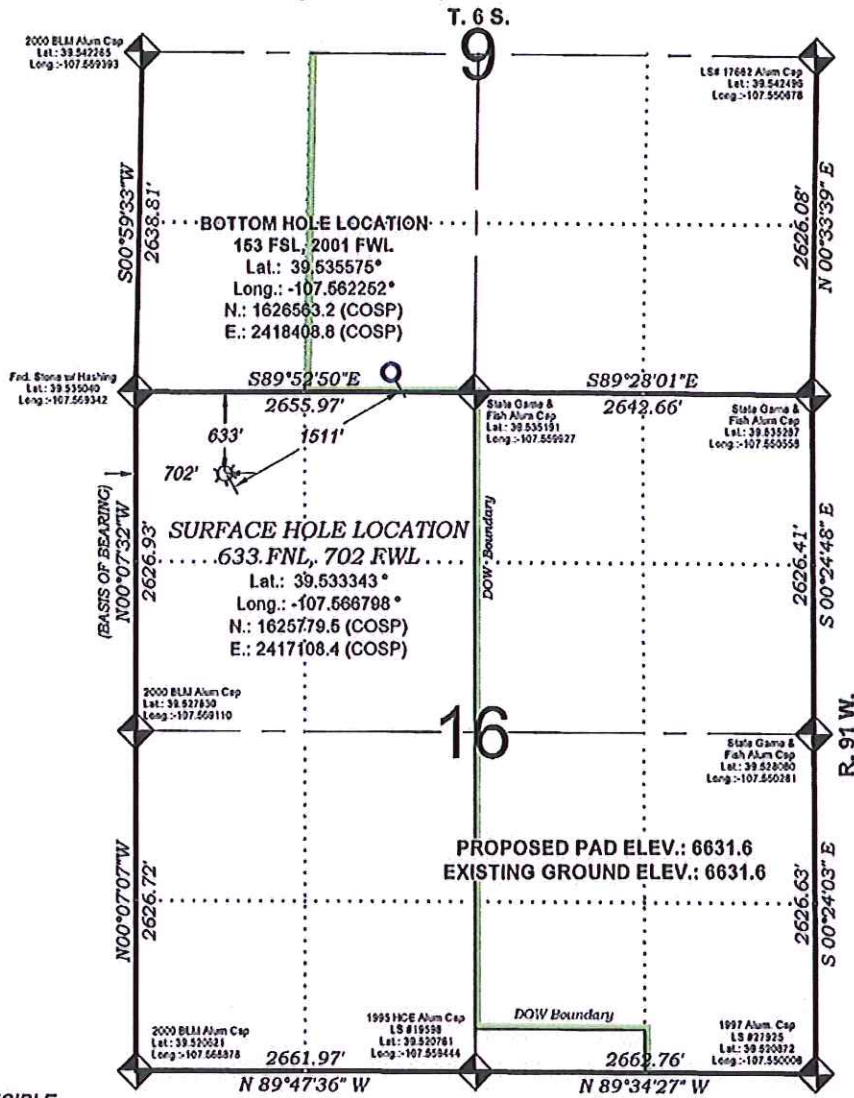



Jolley Family LLLP KP 524-9



THERE ARE NO VISIBLE IMPROVEMENTS WITHIN 500' OF THIS LOCATION

- LEGEND -

FIELD LOCATED SECTION MONUMENTS AS DESCRIBED 

FIELD SURVEYED WELL LOCATION 

CALCULATED BOTTOM HOLE LOCATION 

CALCULATED SECTION CORNER LOCATION 

SURVEYORS STATEMENT

I, MICHAEL J. LANGHORNE, A REGISTERED LAND SURVEYOR IN THE STATE OF COLORADO DO HEREBY CERTIFY THAT THE SURVEY SHOWN HEREON WAS PREPARED UNDER MY DIRECT SUPERVISION AND HAS BEEN STAKED ON THE GROUND AS SHOWN ON THE PLAT AND CHECKING THAT THIS MAP IS A TRUE REPRESENTATION THEREOF.

Michael J. Langhorne
 MICHAEL J. LANGHORNE, COLORADO REGISTRATION NO. 36572
 FOR AND ON BEHALF OF
 BOOKCLIFF SURVEY SERVICES, INC.

REFERENCES

- 1) DEPENDENT RESURVEY T. 6 S., R. 91 W., 6th P.M (OLO NOTES)
- 2) U.S.G.S. QUAD: NEW CASTLE, CO

REVISED: 4/18/14

NOTES

- 1) ELEVATIONS BASED ON N.A.V.D. 1988 PUBLISHED COORDINATES.
- 2) LATITUDES AND LONGITUDES ARE BASE ON NAD 83, PUBLISHED COORDINATES
- 3) STATE PLANE COORDINATES ARE BASED ON COLORADO CENTRAL ZONE, U.S. SURVEY FEET.
- 4) ELEVATION MASK SET TO 15°
- 5) GPS OPERATOR J. KIRKPATRICK, OBSERVED A PDOP OF 0.8 FOR SURVEY POINT NUMBER 72000.
- 6) SURFACE AND BOTTOM HOLE LOCATIONS ARE MEASURED 90° FROM SECTION LINES.

WELL LOCATION PLAT Prepared for: WPXENERGY. WPX Energy Rocky Mountain, LLC

NW1/4 NW1/4, SECTION 16
 T. 6 S., R. 91 W. of the 6th P.M.
 GARFIELD COUNTY, COLORADO



SURVEY DATE:	12/14/09
MAP DATE:	2/4/11
SCALE:	1" = 1000'
PLAT:	1 of 1
PROJECT:	Kokopelli