

T8N, R93W, 6th P.M.

AXIA ENERGY

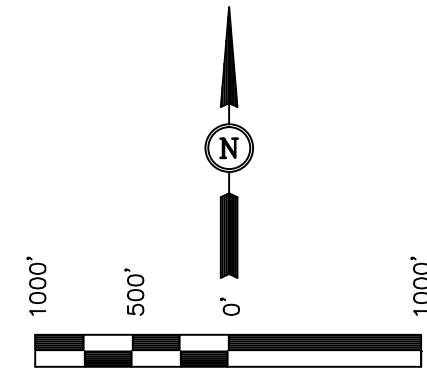
Well location, BULLDOG #13-21H-893 (SURFACE LOCATION), located as shown in the NW 1/4 NE 1/4 of Section 13, T8N, R93W, 6th P.M., Moffat County, Colorado.

BASIS OF ELEVATION

SPOT ELEVATION AT THE NORTHEAST CORNER OF SECTION 10, T6N, R93W, 6th P.M., TAKEN FROM THE HORSE GULCH QUADRANGLE, COLORADO, MOFFAT COUNTY, 7.5 MINUTE QUAD. (TOPOGRAPHIC MAP) PUBLISHED BY THE UNITED STATES DEPARTMENT OF THE INTERIOR, GEOLOGICAL SURVEY. SAID ELEVATION IS MARKED AS BEING 6246 FEET.

BASIS OF BEARINGS

BASIS OF BEARINGS IS A G.P.S. OBSERVATION.



SCALE
CERTIFICATE

THIS IS TO CERTIFY THAT THE ABOVE PLAT WAS PREPARED FROM FIELD NOTES OF ACTUAL SURVEYS MADE BY ME OR UNDER MY SUPERVISION AND THAT THE SAME ARE TRUE AND CORRECT TO THE BEST OF MY KNOWLEDGE AND BELIEF.

REGISTERED LAND SURVEYOR
REGISTRATION NO. 14792
STATE OF COLORADO 09-11-13

UINTAH ENGINEERING & LAND SURVEYING
85 SOUTH 200 EAST - VERNAL, UTAH 84078
(435) 789-1017

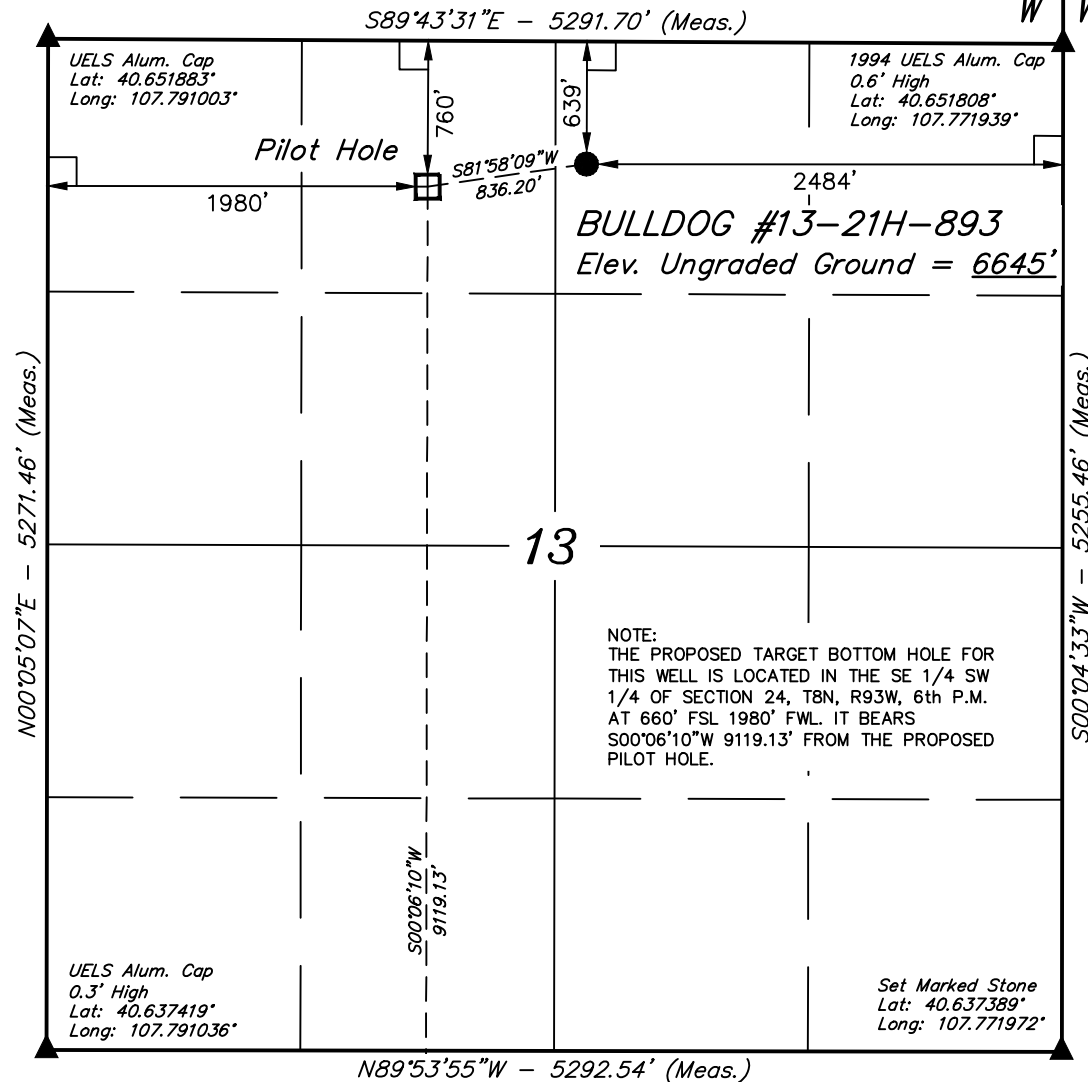
LEGEND:

- └─ = 90° SYMBOL
- = PROPOSED WELL HEAD.
- ▲ = SECTION CORNERS LOCATED.

○ Target Bottom Hole

PDOP = 1.4

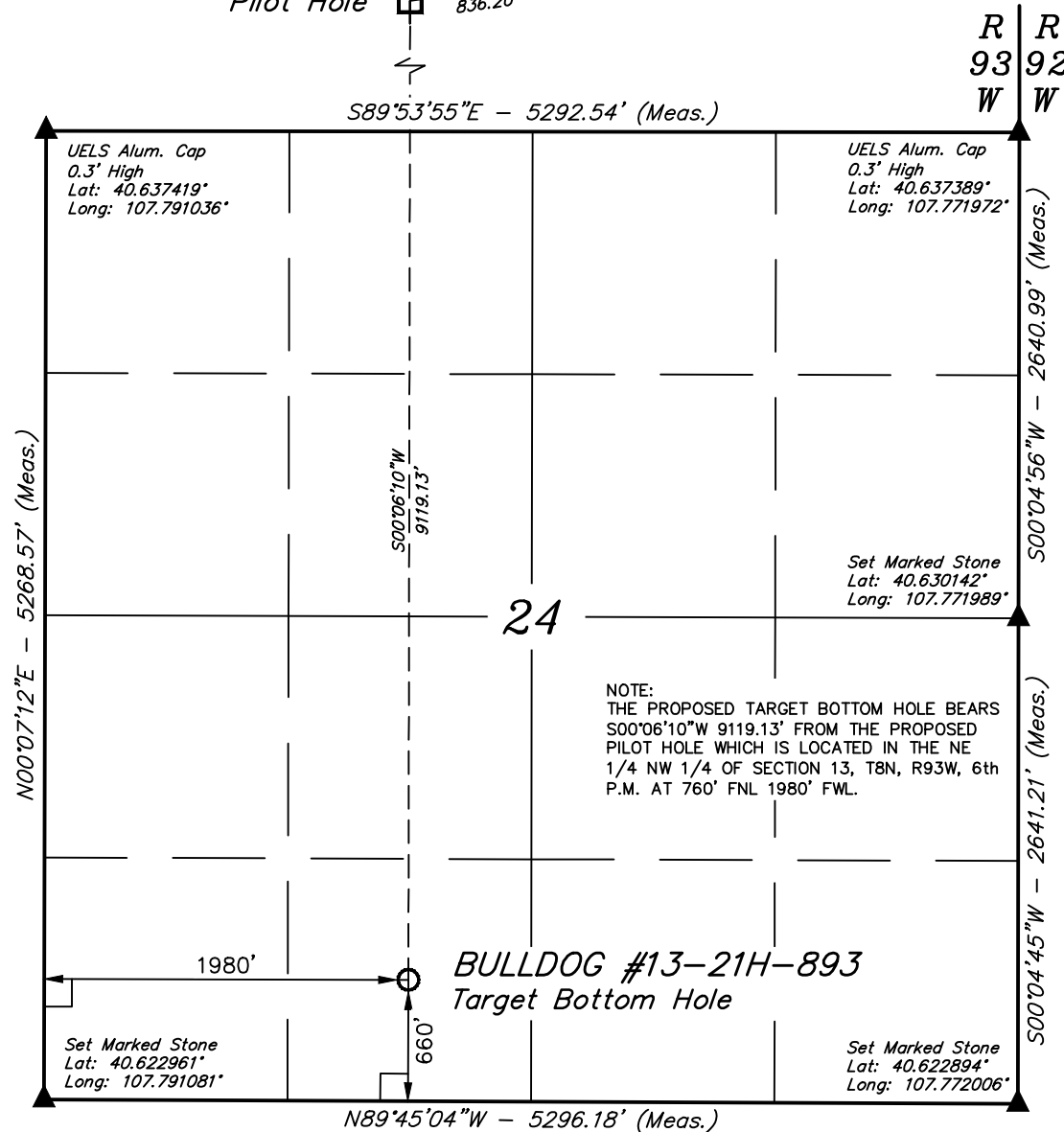
NAD 83 (PILOT HOLE)	NAD 83 (SURFACE LOCATION)
LATITUDE = 40°38'59.17" (40.649769)	LATITUDE = 40°39'00.32" (40.650089)
LONGITUDE = 107°47'01.95" (107.783875)	LONGITUDE = 107°46'51.21" (107.780892)
NAD 27 (PILOT HOLE)	NAD 27 (SURFACE LOCATION)
LATITUDE = 40°38'59.28" (40.649800)	LATITUDE = 40°39'00.44" (40.650122)
LONGITUDE = 107°46'59.68" (107.783244)	LONGITUDE = 107°46'48.94" (107.780261)



NOTE:
THE PROPOSED TARGET BOTTOM HOLE FOR THIS WELL IS LOCATED IN THE SE 1/4 SW 1/4 OF SECTION 24, T8N, R93W, 6th P.M. AT 660' FSL 1980' FWL. IT BEARS S00°06'10"W 9119.13' FROM THE PROPOSED PILOT HOLE.

T8N, R93W, 6th P.M.

Pilot Hole \square $\frac{S81^{\circ}58'09"W}{836.20'}$ ● Surface Location



LEGEND:

- \square = 90° SYMBOL
- = PROPOSED WELL HEAD.
- ▲ = SECTION CORNERS LOCATED.

NAD 83 (TARGET BOTTOM HOLE)	
LATITUDE	= 40°37'29.09" (40.624747)
LONGITUDE	= 107°47'02.20" (107.783944)
NAD 27 (TARGET BOTTOM HOLE)	
LATITUDE	= 40°37'29.20" (40.624778)
LONGITUDE	= 107°46'59.93" (107.783314)

AXIA ENERGY

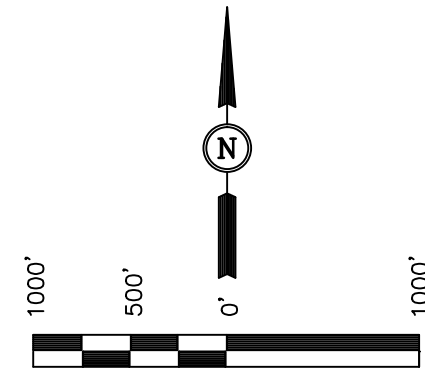
Well location, BULLDOG #13-21H-893 (TARGET BOTTOM HOLE), located as shown in the SE 1/4 SW 1/4 of Section 24, T8N, R93W, 6th P.M., Moffat County, Colorado.

BASIS OF ELEVATION

SPOT ELEVATION AT THE NORTHEAST CORNER OF SECTION 10, T6N, R93W, 6th P.M., TAKEN FROM THE HORSE GULCH QUADRANGLE, COLORADO, MOFFAT COUNTY, 7.5 MINUTE QUAD. (TOPOGRAPHIC MAP) PUBLISHED BY THE UNITED STATES DEPARTMENT OF THE INTERIOR, GEOLOGICAL SURVEY. SAID ELEVATION IS MARKED AS BEING 6246 FEET.

BASIS OF BEARINGS

BASIS OF BEARINGS IS A G.P.S. OBSERVATION.



SCALE
CERTIFICATE

THIS IS TO CERTIFY THAT THE ABOVE PLAT WAS PREPARED FROM FIELD NOTES OF ACTUAL SURVEYS MADE BY ME OR UNDER MY SUPERVISION AND THAT THE SAME ARE TRUE AND CORRECT TO THE BEST OF MY KNOWLEDGE AND BELIEF.

REGISTERED LAND SURVEYOR
REGISTRATION NO. 17492
STATE OF COLORADO
09-11-13

UINTAH ENGINEERING & LAND SURVEYING
85 SOUTH 200 EAST - VERNAL, UTAH 84078
(435) 789-1017

SCALE 1" = 1000'	DATE SURVEYED: 08-13-13	DATE DRAWN: 09-04-13
PARTY G.M. C.H. T.B.	REFERENCES G.L.O. PLAT	
WEATHER HOT	FILE AXIA ENERGY	