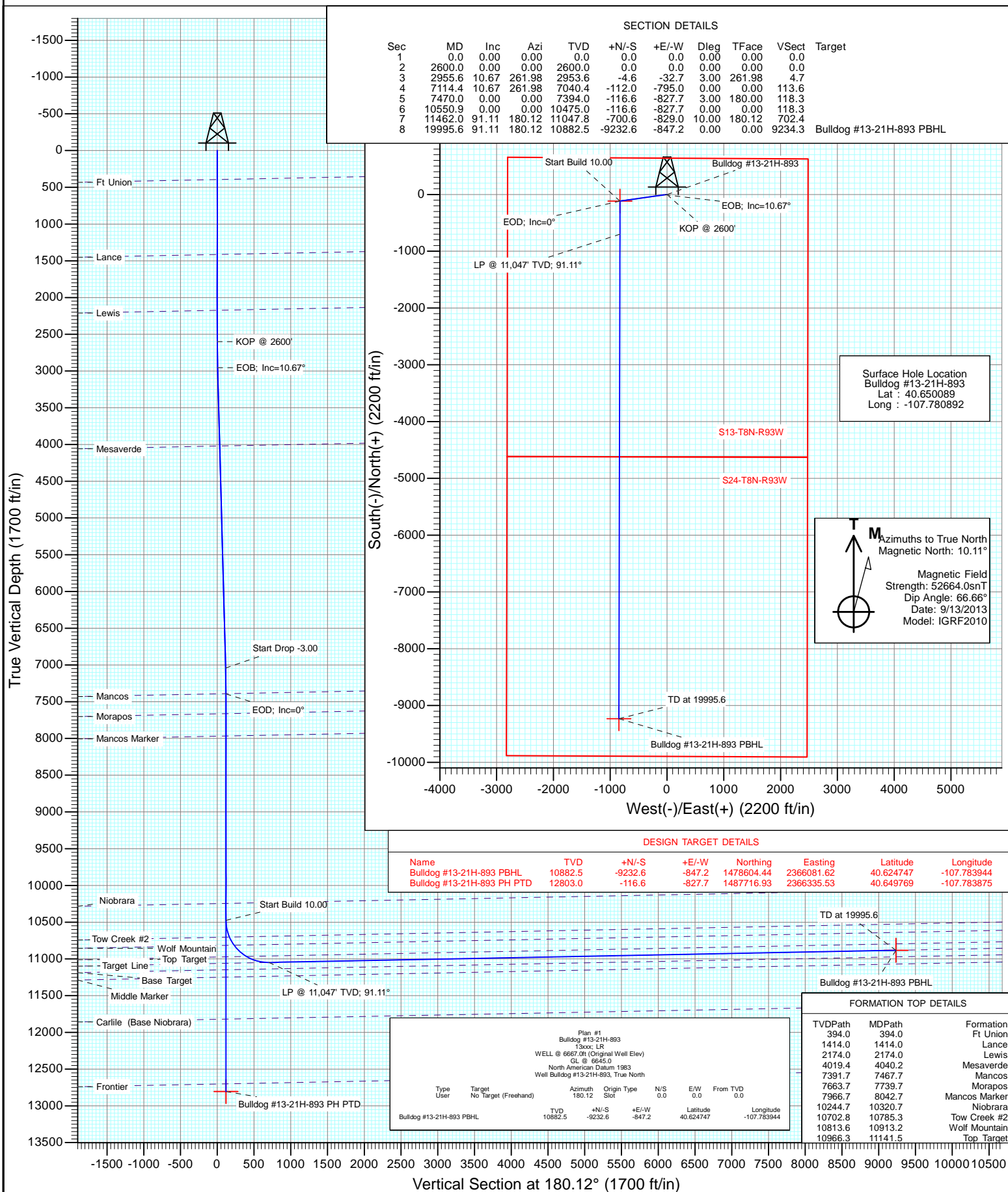




Project: Moffat County, CO
Site: SEC 13-T8N-R93W
Well: Bulldog #13-21H-893
Wellbore: HZ
Design: Plan #1



Planning Report

Database:	USA EDM 5000 Multi Users DB	Local Co-ordinate Reference:	Well Bulldog #13-21H-893
Company:	Axia Energy	TVD Reference:	WELL @ 6667.0ft (Original Well Elev)
Project:	Moffat County, CO	MD Reference:	WELL @ 6667.0ft (Original Well Elev)
Site:	SEC 13-T8N-R93W	North Reference:	True
Well:	Bulldog #13-21H-893	Survey Calculation Method:	Minimum Curvature
Wellbore:	HZ		
Design:	Plan #1		

Project	Moffat County, CO		
Map System:	US State Plane 1983	System Datum:	Mean Sea Level
Geo Datum:	North American Datum 1983		
Map Zone:	Colorado Northern Zone		

Site		SEC 13-T8N-R93W			
Site Position:		Northing:	1,487,811.65 ft	Latitude:	40.650089
From:	Lat/Long	Easting:	2,367,186.24 ft	Longitude:	-107.780819
Position Uncertainty:	0.0 ft	Slot Radius:	13.200 in	Grid Convergence:	-1.47 °

Well	Bulldog #13-21H-893					
Well Position	+N/-S	0.0 ft	Northing:	1,487,812.17 ft	Latitude:	40.650089
	+E/-W	0.0 ft	Easting:	2,367,166.00 ft	Longitude:	-107.780892
Position Uncertainty		0.0 ft	Wellhead Elevation:	ft	Ground Level:	6,645.0 ft

Wellbore	HZ				
Magnetics	Model Name	Sample Date	Declination (°)	Dip Angle (°)	Field Strength (nT)
	IGRF2010	9/13/2013	10.11	66.66	52,664

Design	Plan #1			
Audit Notes:				
Version:	Phase:	PLAN	Tie On Depth:	0.0
Vertical Section:	Depth From (TVD) (ft)	+N/-S (ft)	+E/-W (ft)	Direction (°)
	0.0	0.0	0.0	180.12

Plan Sections										
Measured Depth (ft)	Inclination (°)	Azimuth (°)	Vertical Depth (ft)	+N/-S (ft)	+E/-W (ft)	Dogleg Rate (°/100ft)	Build Rate (°/100ft)	Turn Rate (°/100ft)	TFO (°)	Target
0.0	0.00	0.00	0.0	0.0	0.0	0.00	0.00	0.00	0.00	
2,600.0	0.00	0.00	2,600.0	0.0	0.0	0.00	0.00	0.00	0.00	
2,955.6	10.67	261.98	2,953.6	-4.6	-32.7	3.00	3.00	0.00	261.98	
7,114.4	10.67	261.98	7,040.4	-112.0	-795.0	0.00	0.00	0.00	0.00	
7,470.0	0.00	0.00	7,394.0	-116.6	-827.7	3.00	-3.00	0.00	180.00	
10,550.9	0.00	0.00	10,475.0	-116.6	-827.7	0.00	0.00	0.00	0.00	
11,462.0	91.11	180.12	11,047.8	-700.6	-829.0	10.00	10.00	0.00	180.12	
19,995.6	91.11	180.12	10,882.5	-9,232.6	-847.2	0.00	0.00	0.00	0.00	Bulldog #13-21H-893

Planning Report

Database:	USA EDM 5000 Multi Users DB	Local Co-ordinate Reference:	Well Bulldog #13-21H-893
Company:	Axia Energy	TVD Reference:	WELL @ 6667.0ft (Original Well Elev)
Project:	Moffat County, CO	MD Reference:	WELL @ 6667.0ft (Original Well Elev)
Site:	SEC 13-T8N-R93W	North Reference:	True
Well:	Bulldog #13-21H-893	Survey Calculation Method:	Minimum Curvature
Wellbore:	HZ		
Design:	Plan #1		

Planned Survey									
Measured Depth (ft)	Inclination (°)	Azimuth (°)	Vertical Depth (ft)	+N/-S (ft)	+E/-W (ft)	Vertical Section (ft)	Dogleg Rate (°/100ft)	Build Rate (°/100ft)	Comments / Formations
0.0	0.00	0.00	0.0	0.0	0.0	0.0	0.00	0.00	
100.0	0.00	0.00	100.0	0.0	0.0	0.0	0.00	0.00	
200.0	0.00	0.00	200.0	0.0	0.0	0.0	0.00	0.00	
300.0	0.00	0.00	300.0	0.0	0.0	0.0	0.00	0.00	
394.0	0.00	0.00	394.0	0.0	0.0	0.0	0.00	0.00	Ft Union
400.0	0.00	0.00	400.0	0.0	0.0	0.0	0.00	0.00	
500.0	0.00	0.00	500.0	0.0	0.0	0.0	0.00	0.00	
600.0	0.00	0.00	600.0	0.0	0.0	0.0	0.00	0.00	
700.0	0.00	0.00	700.0	0.0	0.0	0.0	0.00	0.00	
800.0	0.00	0.00	800.0	0.0	0.0	0.0	0.00	0.00	
900.0	0.00	0.00	900.0	0.0	0.0	0.0	0.00	0.00	
1,000.0	0.00	0.00	1,000.0	0.0	0.0	0.0	0.00	0.00	
1,100.0	0.00	0.00	1,100.0	0.0	0.0	0.0	0.00	0.00	
1,200.0	0.00	0.00	1,200.0	0.0	0.0	0.0	0.00	0.00	
1,300.0	0.00	0.00	1,300.0	0.0	0.0	0.0	0.00	0.00	
1,400.0	0.00	0.00	1,400.0	0.0	0.0	0.0	0.00	0.00	
1,414.0	0.00	0.00	1,414.0	0.0	0.0	0.0	0.00	0.00	Lance
1,500.0	0.00	0.00	1,500.0	0.0	0.0	0.0	0.00	0.00	
1,600.0	0.00	0.00	1,600.0	0.0	0.0	0.0	0.00	0.00	
1,700.0	0.00	0.00	1,700.0	0.0	0.0	0.0	0.00	0.00	
1,800.0	0.00	0.00	1,800.0	0.0	0.0	0.0	0.00	0.00	
1,900.0	0.00	0.00	1,900.0	0.0	0.0	0.0	0.00	0.00	
2,000.0	0.00	0.00	2,000.0	0.0	0.0	0.0	0.00	0.00	
2,100.0	0.00	0.00	2,100.0	0.0	0.0	0.0	0.00	0.00	
2,174.0	0.00	0.00	2,174.0	0.0	0.0	0.0	0.00	0.00	Lewis
2,200.0	0.00	0.00	2,200.0	0.0	0.0	0.0	0.00	0.00	
2,300.0	0.00	0.00	2,300.0	0.0	0.0	0.0	0.00	0.00	
2,400.0	0.00	0.00	2,400.0	0.0	0.0	0.0	0.00	0.00	
2,500.0	0.00	0.00	2,500.0	0.0	0.0	0.0	0.00	0.00	
2,600.0	0.00	0.00	2,600.0	0.0	0.0	0.0	0.00	0.00	KOP @ 2600'
2,700.0	3.00	261.98	2,700.0	-0.4	-2.6	0.4	3.00	3.00	
2,800.0	6.00	261.98	2,799.6	-1.5	-10.4	1.5	3.00	3.00	
2,900.0	9.00	261.98	2,898.8	-3.3	-23.3	3.3	3.00	3.00	
2,955.6	10.67	261.98	2,953.6	-4.6	-32.7	4.7	3.00	3.00	EOB; Inc=10.67°
3,000.0	10.67	261.98	2,997.2	-5.7	-40.8	5.8	0.00	0.00	
3,100.0	10.67	261.98	3,095.5	-8.3	-59.2	8.5	0.00	0.00	
3,200.0	10.67	261.98	3,193.7	-10.9	-77.5	11.1	0.00	0.00	
3,300.0	10.67	261.98	3,292.0	-13.5	-95.8	13.7	0.00	0.00	
3,400.0	10.67	261.98	3,390.3	-16.1	-114.2	16.3	0.00	0.00	
3,500.0	10.67	261.98	3,488.5	-18.7	-132.5	18.9	0.00	0.00	
3,600.0	10.67	261.98	3,586.8	-21.2	-150.8	21.6	0.00	0.00	
3,700.0	10.67	261.98	3,685.1	-23.8	-169.1	24.2	0.00	0.00	
3,800.0	10.67	261.98	3,783.4	-26.4	-187.5	26.8	0.00	0.00	
3,900.0	10.67	261.98	3,881.6	-29.0	-205.8	29.4	0.00	0.00	
4,000.0	10.67	261.98	3,979.9	-31.6	-224.1	32.0	0.00	0.00	
4,040.2	10.67	261.98	4,019.4	-32.6	-231.5	33.1	0.00	0.00	Mesaverde
4,100.0	10.67	261.98	4,078.2	-34.1	-242.5	34.7	0.00	0.00	
4,200.0	10.67	261.98	4,176.4	-36.7	-260.8	37.3	0.00	0.00	
4,300.0	10.67	261.98	4,274.7	-39.3	-279.1	39.9	0.00	0.00	
4,400.0	10.67	261.98	4,373.0	-41.9	-297.5	42.5	0.00	0.00	
4,500.0	10.67	261.98	4,471.3	-44.5	-315.8	45.1	0.00	0.00	
4,600.0	10.67	261.98	4,569.5	-47.1	-334.1	47.8	0.00	0.00	

Planning Report

Database:	USA EDM 5000 Multi Users DB	Local Co-ordinate Reference:	Well Bulldog #13-21H-893
Company:	Axia Energy	TVD Reference:	WELL @ 6667.0ft (Original Well Elev)
Project:	Moffat County, CO	MD Reference:	WELL @ 6667.0ft (Original Well Elev)
Site:	SEC 13-T8N-R93W	North Reference:	True
Well:	Bulldog #13-21H-893	Survey Calculation Method:	Minimum Curvature
Wellbore:	HZ		
Design:	Plan #1		

Planned Survey									
Measured Depth (ft)	Inclination (°)	Azimuth (°)	Vertical Depth (ft)	+N/-S (ft)	+E/-W (ft)	Vertical Section (ft)	Dogleg Rate (°/100ft)	Build Rate (°/100ft)	Comments / Formations
4,700.0	10.67	261.98	4,667.8	-49.6	-352.5	50.4	0.00	0.00	
4,800.0	10.67	261.98	4,766.1	-52.2	-370.8	53.0	0.00	0.00	
4,900.0	10.67	261.98	4,864.3	-54.8	-389.1	55.6	0.00	0.00	
5,000.0	10.67	261.98	4,962.6	-57.4	-407.5	58.2	0.00	0.00	
5,100.0	10.67	261.98	5,060.9	-60.0	-425.8	60.9	0.00	0.00	
5,200.0	10.67	261.98	5,159.2	-62.5	-444.1	63.5	0.00	0.00	
5,300.0	10.67	261.98	5,257.4	-65.1	-462.4	66.1	0.00	0.00	
5,400.0	10.67	261.98	5,355.7	-67.7	-480.8	68.7	0.00	0.00	
5,500.0	10.67	261.98	5,454.0	-70.3	-499.1	71.3	0.00	0.00	
5,600.0	10.67	261.98	5,552.2	-72.9	-517.4	73.9	0.00	0.00	
5,700.0	10.67	261.98	5,650.5	-75.4	-535.8	76.6	0.00	0.00	
5,800.0	10.67	261.98	5,748.8	-78.0	-554.1	79.2	0.00	0.00	
5,900.0	10.67	261.98	5,847.1	-80.6	-572.4	81.8	0.00	0.00	
6,000.0	10.67	261.98	5,945.3	-83.2	-590.8	84.4	0.00	0.00	
6,100.0	10.67	261.98	6,043.6	-85.8	-609.1	87.0	0.00	0.00	
6,200.0	10.67	261.98	6,141.9	-88.4	-627.4	89.7	0.00	0.00	
6,300.0	10.67	261.98	6,240.1	-90.9	-645.8	92.3	0.00	0.00	
6,400.0	10.67	261.98	6,338.4	-93.5	-664.1	94.9	0.00	0.00	
6,500.0	10.67	261.98	6,436.7	-96.1	-682.4	97.5	0.00	0.00	
6,600.0	10.67	261.98	6,535.0	-98.7	-700.8	100.1	0.00	0.00	
6,700.0	10.67	261.98	6,633.2	-101.3	-719.1	102.8	0.00	0.00	
6,800.0	10.67	261.98	6,731.5	-103.8	-737.4	105.4	0.00	0.00	
6,900.0	10.67	261.98	6,829.8	-106.4	-755.8	108.0	0.00	0.00	
7,000.0	10.67	261.98	6,928.0	-109.0	-774.1	110.6	0.00	0.00	
7,100.0	10.67	261.98	7,026.3	-111.6	-792.4	113.2	0.00	0.00	
7,114.4	10.67	261.98	7,040.4	-112.0	-795.0	113.6	0.00	0.00	Start Drop -3.00
7,200.0	8.10	261.98	7,124.9	-113.9	-808.9	115.6	3.00	-3.00	
7,300.0	5.10	261.98	7,224.2	-115.5	-820.3	117.2	3.00	-3.00	
7,400.0	2.10	261.98	7,324.0	-116.4	-826.5	118.1	3.00	-3.00	
7,467.7	0.07	261.98	7,391.7	-116.6	-827.7	118.3	3.00	-3.00	Mancos
7,470.0	0.00	0.00	7,394.0	-116.6	-827.7	118.3	3.00	-3.00	EOD; Inc=0°
7,500.0	0.00	0.00	7,424.0	-116.6	-827.7	118.3	0.00	0.00	
7,600.0	0.00	0.00	7,524.0	-116.6	-827.7	118.3	0.00	0.00	
7,700.0	0.00	0.00	7,624.0	-116.6	-827.7	118.3	0.00	0.00	
7,739.7	0.00	0.00	7,663.7	-116.6	-827.7	118.3	0.00	0.00	Morapos
7,800.0	0.00	0.00	7,724.0	-116.6	-827.7	118.3	0.00	0.00	
7,900.0	0.00	0.00	7,824.0	-116.6	-827.7	118.3	0.00	0.00	
8,000.0	0.00	0.00	7,924.0	-116.6	-827.7	118.3	0.00	0.00	
8,042.7	0.00	0.00	7,966.7	-116.6	-827.7	118.3	0.00	0.00	Mancos Marker
8,100.0	0.00	0.00	8,024.0	-116.6	-827.7	118.3	0.00	0.00	
8,200.0	0.00	0.00	8,124.0	-116.6	-827.7	118.3	0.00	0.00	
8,300.0	0.00	0.00	8,224.0	-116.6	-827.7	118.3	0.00	0.00	
8,400.0	0.00	0.00	8,324.0	-116.6	-827.7	118.3	0.00	0.00	
8,500.0	0.00	0.00	8,424.0	-116.6	-827.7	118.3	0.00	0.00	
8,600.0	0.00	0.00	8,524.0	-116.6	-827.7	118.3	0.00	0.00	
8,700.0	0.00	0.00	8,624.0	-116.6	-827.7	118.3	0.00	0.00	
8,800.0	0.00	0.00	8,724.0	-116.6	-827.7	118.3	0.00	0.00	
8,900.0	0.00	0.00	8,824.0	-116.6	-827.7	118.3	0.00	0.00	
9,000.0	0.00	0.00	8,924.0	-116.6	-827.7	118.3	0.00	0.00	
9,100.0	0.00	0.00	9,024.0	-116.6	-827.7	118.3	0.00	0.00	
9,200.0	0.00	0.00	9,124.0	-116.6	-827.7	118.3	0.00	0.00	
9,300.0	0.00	0.00	9,224.0	-116.6	-827.7	118.3	0.00	0.00	

Planning Report

Database:	USA EDM 5000 Multi Users DB	Local Co-ordinate Reference:	Well Bulldog #13-21H-893
Company:	Axia Energy	TVD Reference:	WELL @ 6667.0ft (Original Well Elev)
Project:	Moffat County, CO	MD Reference:	WELL @ 6667.0ft (Original Well Elev)
Site:	SEC 13-T8N-R93W	North Reference:	True
Well:	Bulldog #13-21H-893	Survey Calculation Method:	Minimum Curvature
Wellbore:	HZ		
Design:	Plan #1		

Planned Survey

Measured Depth (ft)	Inclination (°)	Azimuth (°)	Vertical Depth (ft)	+N/-S (ft)	+E/-W (ft)	Vertical Section (ft)	Dogleg Rate (°/100ft)	Build Rate (°/100ft)	Comments / Formations
9,400.0	0.00	0.00	9,324.0	-116.6	-827.7	118.3	0.00	0.00	
9,500.0	0.00	0.00	9,424.0	-116.6	-827.7	118.3	0.00	0.00	
9,600.0	0.00	0.00	9,524.0	-116.6	-827.7	118.3	0.00	0.00	
9,700.0	0.00	0.00	9,624.0	-116.6	-827.7	118.3	0.00	0.00	
9,800.0	0.00	0.00	9,724.0	-116.6	-827.7	118.3	0.00	0.00	
9,900.0	0.00	0.00	9,824.0	-116.6	-827.7	118.3	0.00	0.00	
10,000.0	0.00	0.00	9,924.0	-116.6	-827.7	118.3	0.00	0.00	
10,100.0	0.00	0.00	10,024.0	-116.6	-827.7	118.3	0.00	0.00	
10,200.0	0.00	0.00	10,124.0	-116.6	-827.7	118.3	0.00	0.00	
10,300.0	0.00	0.00	10,224.0	-116.6	-827.7	118.3	0.00	0.00	
10,320.7	0.00	0.00	10,244.7	-116.6	-827.7	118.3	0.00	0.00	Niobrara
10,400.0	0.00	0.00	10,324.0	-116.6	-827.7	118.3	0.00	0.00	
10,500.0	0.00	0.00	10,424.0	-116.6	-827.7	118.3	0.00	0.00	
10,550.9	0.00	0.00	10,475.0	-116.6	-827.7	118.3	0.00	0.00	Start Build 10.00
10,600.0	4.91	180.12	10,524.0	-118.7	-827.7	120.4	10.00	10.00	
10,700.0	14.91	180.12	10,622.3	-135.8	-827.8	137.6	10.00	10.00	
10,785.3	23.43	180.12	10,702.8	-163.8	-827.8	165.6	10.00	10.00	Tow Creek #2
10,800.0	24.91	180.12	10,716.2	-169.8	-827.9	171.6	10.00	10.00	
10,900.0	34.91	180.12	10,802.8	-219.6	-828.0	221.4	10.00	10.00	
10,913.2	36.23	180.12	10,813.6	-227.3	-828.0	229.1	10.00	10.00	Wolf Mountain
11,000.0	44.91	180.12	10,879.4	-283.7	-828.1	285.4	10.00	10.00	
11,100.0	54.91	180.12	10,943.8	-360.1	-828.3	361.8	10.00	10.00	
11,141.5	59.05	180.12	10,966.3	-394.9	-828.3	396.6	10.00	10.00	Top Target
11,200.0	64.91	180.12	10,993.8	-446.5	-828.4	448.3	10.00	10.00	
11,300.0	74.91	180.12	11,028.2	-540.3	-828.6	542.0	10.00	10.00	
11,400.0	84.91	180.12	11,045.7	-638.6	-828.9	640.4	10.00	10.00	
11,462.0	91.11	180.12	11,047.8	-700.6	-829.0	702.4	10.00	10.00	LP @ 11,047' TVD; 91.11°
11,500.0	91.11	180.12	11,047.1	-738.6	-829.1	740.3	0.00	0.00	
11,600.0	91.11	180.12	11,045.1	-838.5	-829.3	840.3	0.00	0.00	
11,700.0	91.11	180.12	11,043.2	-938.5	-829.5	940.3	0.00	0.00	
11,800.0	91.11	180.12	11,041.3	-1,038.5	-829.7	1,040.2	0.00	0.00	
11,900.0	91.11	180.12	11,039.3	-1,138.5	-829.9	1,140.2	0.00	0.00	
12,000.0	91.11	180.12	11,037.4	-1,238.5	-830.1	1,240.2	0.00	0.00	
12,100.0	91.11	180.12	11,035.5	-1,338.4	-830.3	1,340.2	0.00	0.00	
12,200.0	91.11	180.12	11,033.5	-1,438.4	-830.6	1,440.2	0.00	0.00	
12,300.0	91.11	180.12	11,031.6	-1,538.4	-830.8	1,540.1	0.00	0.00	
12,400.0	91.11	180.12	11,029.6	-1,638.4	-831.0	1,640.1	0.00	0.00	
12,500.0	91.11	180.12	11,027.7	-1,738.4	-831.2	1,740.1	0.00	0.00	
12,600.0	91.11	180.12	11,025.8	-1,838.4	-831.4	1,840.1	0.00	0.00	
12,700.0	91.11	180.12	11,023.8	-1,938.3	-831.6	1,940.1	0.00	0.00	
12,800.0	91.11	180.12	11,021.9	-2,038.3	-831.8	2,040.1	0.00	0.00	
12,900.0	91.11	180.12	11,020.0	-2,138.3	-832.1	2,140.0	0.00	0.00	
13,000.0	91.11	180.12	11,018.0	-2,238.3	-832.3	2,240.0	0.00	0.00	
13,100.0	91.11	180.12	11,016.1	-2,338.3	-832.5	2,340.0	0.00	0.00	
13,200.0	91.11	180.12	11,014.1	-2,438.2	-832.7	2,440.0	0.00	0.00	
13,300.0	91.11	180.12	11,012.2	-2,538.2	-832.9	2,540.0	0.00	0.00	
13,400.0	91.11	180.12	11,010.3	-2,638.2	-833.1	2,639.9	0.00	0.00	
13,500.0	91.11	180.12	11,008.3	-2,738.2	-833.3	2,739.9	0.00	0.00	
13,600.0	91.11	180.12	11,006.4	-2,838.2	-833.5	2,839.9	0.00	0.00	
13,700.0	91.11	180.12	11,004.5	-2,938.1	-833.8	2,939.9	0.00	0.00	
13,800.0	91.11	180.12	11,002.5	-3,038.1	-834.0	3,039.9	0.00	0.00	
13,900.0	91.11	180.12	11,000.6	-3,138.1	-834.2	3,139.8	0.00	0.00	

Planning Report

Database:	USA EDM 5000 Multi Users DB	Local Co-ordinate Reference:	Well Bulldog #13-21H-893
Company:	Axia Energy	TVD Reference:	WELL @ 6667.0ft (Original Well Elev)
Project:	Moffat County, CO	MD Reference:	WELL @ 6667.0ft (Original Well Elev)
Site:	SEC 13-T8N-R93W	North Reference:	True
Well:	Bulldog #13-21H-893	Survey Calculation Method:	Minimum Curvature
Wellbore:	HZ		
Design:	Plan #1		

Planned Survey									
Measured Depth (ft)	Inclination (°)	Azimuth (°)	Vertical Depth (ft)	+N/-S (ft)	+E/-W (ft)	Vertical Section (ft)	Dogleg Rate (°/100ft)	Build Rate (°/100ft)	Comments / Formations
14,000.0	91.11	180.12	10,998.6	-3,238.1	-834.4	3,239.8	0.00	0.00	
14,100.0	91.11	180.12	10,996.7	-3,338.1	-834.6	3,339.8	0.00	0.00	
14,200.0	91.11	180.12	10,994.8	-3,438.0	-834.8	3,439.8	0.00	0.00	
14,300.0	91.11	180.12	10,992.8	-3,538.0	-835.0	3,539.8	0.00	0.00	
14,400.0	91.11	180.12	10,990.9	-3,638.0	-835.3	3,639.8	0.00	0.00	
14,500.0	91.11	180.12	10,989.0	-3,738.0	-835.5	3,739.7	0.00	0.00	
14,600.0	91.11	180.12	10,987.0	-3,838.0	-835.7	3,839.7	0.00	0.00	
14,700.0	91.11	180.12	10,985.1	-3,938.0	-835.9	3,939.7	0.00	0.00	
14,800.0	91.11	180.12	10,983.1	-4,037.9	-836.1	4,039.7	0.00	0.00	
14,900.0	91.11	180.12	10,981.2	-4,137.9	-836.3	4,139.7	0.00	0.00	
15,000.0	91.11	180.12	10,979.3	-4,237.9	-836.5	4,239.6	0.00	0.00	
15,100.0	91.11	180.12	10,977.3	-4,337.9	-836.7	4,339.6	0.00	0.00	
15,200.0	91.11	180.12	10,975.4	-4,437.9	-837.0	4,439.6	0.00	0.00	
15,300.0	91.11	180.12	10,973.5	-4,537.8	-837.2	4,539.6	0.00	0.00	
15,400.0	91.11	180.12	10,971.5	-4,637.8	-837.4	4,639.6	0.00	0.00	
15,500.0	91.11	180.12	10,969.6	-4,737.8	-837.6	4,739.5	0.00	0.00	
15,600.0	91.11	180.12	10,967.7	-4,837.8	-837.8	4,839.5	0.00	0.00	
15,700.0	91.11	180.12	10,965.7	-4,937.8	-838.0	4,939.5	0.00	0.00	
15,800.0	91.11	180.12	10,963.8	-5,037.7	-838.2	5,039.5	0.00	0.00	
15,900.0	91.11	180.12	10,961.8	-5,137.7	-838.5	5,139.5	0.00	0.00	
16,000.0	91.11	180.12	10,959.9	-5,237.7	-838.7	5,239.5	0.00	0.00	
16,100.0	91.11	180.12	10,958.0	-5,337.7	-838.9	5,339.4	0.00	0.00	
16,200.0	91.11	180.12	10,956.0	-5,437.7	-839.1	5,439.4	0.00	0.00	
16,300.0	91.11	180.12	10,954.1	-5,537.7	-839.3	5,539.4	0.00	0.00	
16,400.0	91.11	180.12	10,952.2	-5,637.6	-839.5	5,639.4	0.00	0.00	
16,500.0	91.11	180.12	10,950.2	-5,737.6	-839.7	5,739.4	0.00	0.00	
16,600.0	91.11	180.12	10,948.3	-5,837.6	-839.9	5,839.3	0.00	0.00	
16,700.0	91.11	180.12	10,946.3	-5,937.6	-840.2	5,939.3	0.00	0.00	
16,800.0	91.11	180.12	10,944.4	-6,037.6	-840.4	6,039.3	0.00	0.00	
16,900.0	91.11	180.12	10,942.5	-6,137.5	-840.6	6,139.3	0.00	0.00	
17,000.0	91.11	180.12	10,940.5	-6,237.5	-840.8	6,239.3	0.00	0.00	
17,100.0	91.11	180.12	10,938.6	-6,337.5	-841.0	6,339.2	0.00	0.00	
17,200.0	91.11	180.12	10,936.7	-6,437.5	-841.2	6,439.2	0.00	0.00	
17,300.0	91.11	180.12	10,934.7	-6,537.5	-841.4	6,539.2	0.00	0.00	
17,400.0	91.11	180.12	10,932.8	-6,637.4	-841.7	6,639.2	0.00	0.00	
17,500.0	91.11	180.12	10,930.8	-6,737.4	-841.9	6,739.2	0.00	0.00	
17,600.0	91.11	180.12	10,928.9	-6,837.4	-842.1	6,839.2	0.00	0.00	
17,700.0	91.11	180.12	10,927.0	-6,937.4	-842.3	6,939.1	0.00	0.00	
17,800.0	91.11	180.12	10,925.0	-7,037.4	-842.5	7,039.1	0.00	0.00	
17,900.0	91.11	180.12	10,923.1	-7,137.3	-842.7	7,139.1	0.00	0.00	
18,000.0	91.11	180.12	10,921.2	-7,237.3	-842.9	7,239.1	0.00	0.00	
18,100.0	91.11	180.12	10,919.2	-7,337.3	-843.2	7,339.1	0.00	0.00	
18,200.0	91.11	180.12	10,917.3	-7,437.3	-843.4	7,439.0	0.00	0.00	
18,300.0	91.11	180.12	10,915.3	-7,537.3	-843.6	7,539.0	0.00	0.00	
18,400.0	91.11	180.12	10,913.4	-7,637.3	-843.8	7,639.0	0.00	0.00	
18,500.0	91.11	180.12	10,911.5	-7,737.2	-844.0	7,739.0	0.00	0.00	
18,600.0	91.11	180.12	10,909.5	-7,837.2	-844.2	7,839.0	0.00	0.00	
18,700.0	91.11	180.12	10,907.6	-7,937.2	-844.4	7,938.9	0.00	0.00	
18,800.0	91.11	180.12	10,905.7	-8,037.2	-844.6	8,038.9	0.00	0.00	
18,900.0	91.11	180.12	10,903.7	-8,137.2	-844.9	8,138.9	0.00	0.00	
19,000.0	91.11	180.12	10,901.8	-8,237.1	-845.1	8,238.9	0.00	0.00	
19,100.0	91.11	180.12	10,899.8	-8,337.1	-845.3	8,338.9	0.00	0.00	

Planning Report

Database:	USA EDM 5000 Multi Users DB	Local Co-ordinate Reference:	Well Bulldog #13-21H-893
Company:	Axia Energy	TVD Reference:	WELL @ 6667.0ft (Original Well Elev)
Project:	Moffat County, CO	MD Reference:	WELL @ 6667.0ft (Original Well Elev)
Site:	SEC 13-T8N-R93W	North Reference:	True
Well:	Bulldog #13-21H-893	Survey Calculation Method:	Minimum Curvature
Wellbore:	HZ		
Design:	Plan #1		

Planned Survey

Measured Depth (ft)	Inclination (°)	Azimuth (°)	Vertical Depth (ft)	+N/-S (ft)	+E/-W (ft)	Vertical Section (ft)	Dogleg Rate (°/100ft)	Build Rate (°/100ft)	Comments / Formations
19,200.0	91.11	180.12	10,897.9	-8,437.1	-845.5	8,438.9	0.00	0.00	
19,300.0	91.11	180.12	10,896.0	-8,537.1	-845.7	8,538.8	0.00	0.00	
19,400.0	91.11	180.12	10,894.0	-8,637.1	-845.9	8,638.8	0.00	0.00	
19,500.0	91.11	180.12	10,892.1	-8,737.0	-846.1	8,738.8	0.00	0.00	
19,600.0	91.11	180.12	10,890.2	-8,837.0	-846.4	8,838.8	0.00	0.00	
19,700.0	91.11	180.12	10,888.2	-8,937.0	-846.6	8,938.8	0.00	0.00	
19,800.0	91.11	180.12	10,886.3	-9,037.0	-846.8	9,038.7	0.00	0.00	
19,900.0	91.11	180.12	10,884.4	-9,137.0	-847.0	9,138.7	0.00	0.00	
19,995.6	91.11	180.12	10,882.5	-9,232.6	-847.2	9,234.3	0.00	0.00	TD at 19995.6

Targets

Target Name

- hit/miss target	Dip Angle (°)	Dip Dir. (°)	TVD (ft)	+N/-S (ft)	+E/-W (ft)	Northing (ft)	Easting (ft)	Latitude	Longitude
- Shape									
Bulldog #13-21H-893 PE	0.00	0.00	10,882.5	-9,232.6	-847.2	1,478,604.44	2,366,081.62	40.624747	-107.783944
- plan hits target center									
- Point									

Formations

Measured Depth (ft)	Vertical Depth (ft)	Name	Lithology	Dip (°)	Dip Direction (°)
394.0	394.0	Ft Union		-1.11	180.00
1,414.0	1,414.0	Lance		-1.11	180.00
2,174.0	2,174.0	Lewis		-1.11	180.00
4,040.2	4,020.0	Mesaverde		-1.11	180.00
7,467.7	7,394.0	Mancos		-1.11	180.00
7,739.7	7,666.0	Morapos		-1.11	180.00
8,042.7	7,969.0	Mancos Marker		-1.11	180.00
10,320.7	10,247.0	Niobrara		-1.11	180.00
10,785.3	10,706.0	Tow Creek #2		-1.11	180.00
10,913.2	10,818.0	Wolf Mountain		-1.11	180.00
11,141.5	10,974.0	Top Target		-1.11	180.00

Plan Annotations

Measured Depth (ft)	Vertical Depth (ft)	Local Coordinates		Comment
		+N/-S (ft)	+E/-W (ft)	
2,600.0	2,600.0	0.0	0.0	KOP @ 2600'
2,955.6	2,953.6	-4.6	-32.7	EOB; Inc=10.67°
7,114.4	7,040.4	-112.0	-795.0	Start Drop -3.00
7,470.0	7,394.0	-116.6	-827.7	EOD; Inc=0°
10,550.9	10,475.0	-116.6	-827.7	Start Build 10.00
11,462.0	11,047.8	-700.6	-829.0	LP @ 11,047' TVD; 91.11°
19,995.6	10,882.5	-9,232.6	-847.2	TD at 19995.6