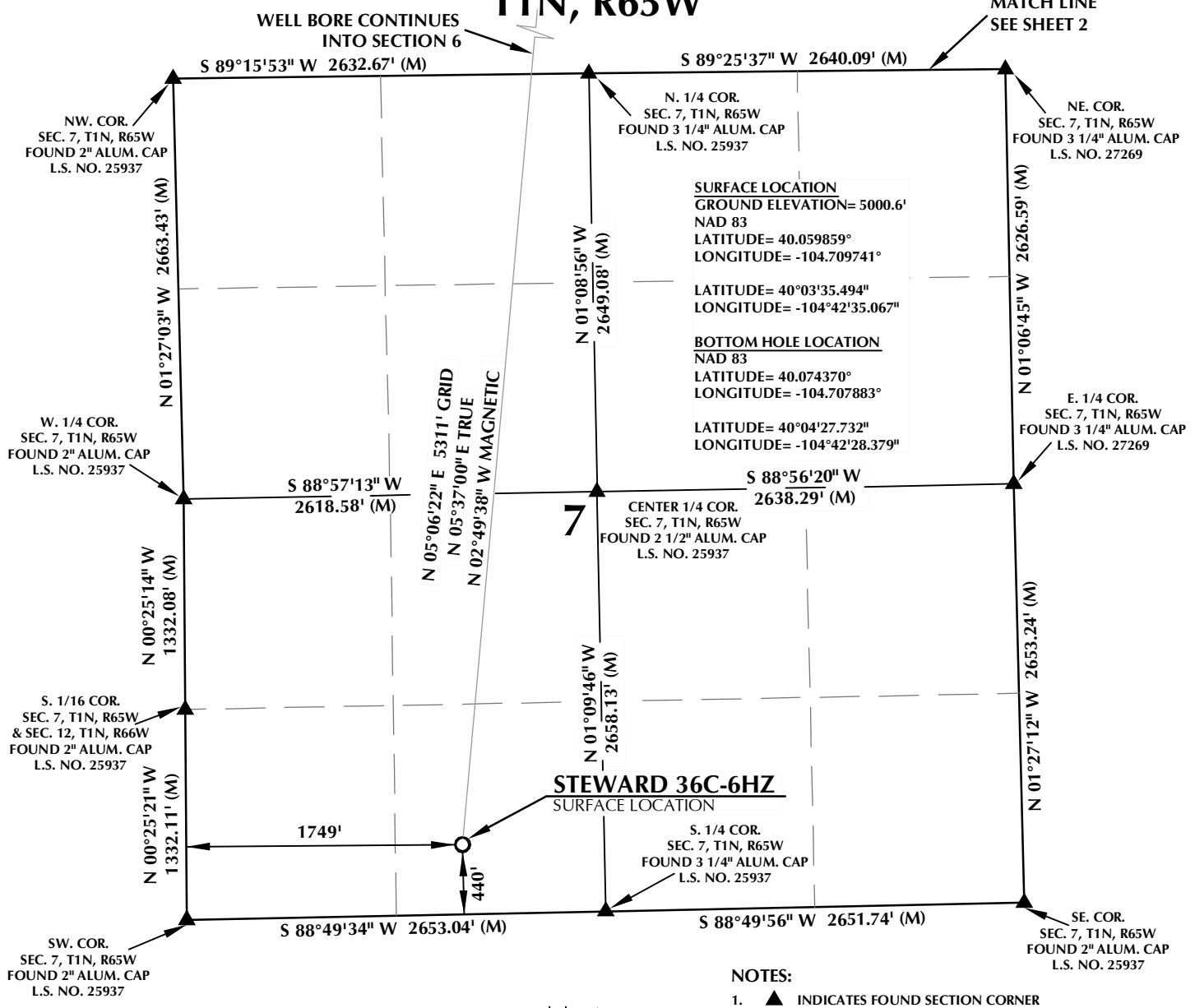


# T1N, R65W



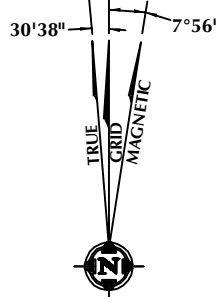
## CERTIFICATE OF SURVEYOR:

THIS IS TO CERTIFY THAT THE ABOVE PLAT WAS PREPARED FROM FIELD NOTES OF ACTUAL SURVEY MADE BY ME OR UNDER MY SUPERVISION AND THAT THE SAME ARE TRUE AND CORRECT TO THE BEST OF MY KNOWLEDGE AND BELIEF. THIS CERTIFICATE DOES NOT REPRESENT A LAND SURVEY PLAT OR IMPROVEMENT SURVEY PLAT AS DEFINED BY C.S. 38-51-102 AND CANNOT BE RELIED UPON TO DETERMINE OWNERSHIP.

*Benjamin J. Reenders*  
 BENJAMIN J. REENDERS  
 PROFESSIONAL LAND SURVEYOR  
 COLORADO REGISTRATION NUMBER 438305

3/21/14

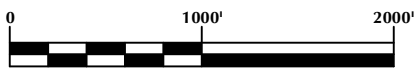
NOTICE: ACCORDING TO COLORADO STATE LAW YOU MUST COMMENCE ANY LEGAL ACTION BASED UPON ANY DEFECT IN THIS SURVEY WITHIN THREE YEARS AFTER YOU FIRST DISCOVER SUCH DEFECT. IN NO EVENT MAY ANY ACTION BASED UPON ANY DEFECT IN THIS SURVEY BE COMMENCED MORE THAN TEN YEARS FROM THE DATE ON THE CERTIFICATION SHOWN HEREON.



NOTE: MAGNETIC NORTH IS CURRENT AS OF 3/18/2014. MAGNETIC NORTH CHANGES WEST 0°08' PER YEAR.

## NOTES:

- ▲ INDICATES FOUND SECTION CORNER
- INDICATES CALCULATED CORNER
- ELEVATION BASED ON NAVD88 (GEOID09)
- BASIS OF BEARING DERIVED FROM COLORADO COORDINATE SYSTEM 1983 NORTH ZONE UNLESS OTHERWISE NOTED.
- ALL MEASURED DISTANCES ARE GRID. COMBINED SCALE FACTOR: .99972680
- OPERATOR: ROB WILSON / PDOP = 1.7
- SEE ADDENDUM TO WELL LOCATION CERTIFICATE FOR EXISTING IMPROVEMENTS WITHIN 500' OF THE WELL PAD.
- WELL FOOTAGES ARE MEASURED AT RIGHT ANGLES TO THE SECTION LINES.
- THE BOTTOM OF HOLE BEARS N05°06'22"E, 5311' FROM THE SURFACE LOCATION.



SCALE: 1" = 1000'

## WELL PAD - STEWARD 35N-6HZ

STEWARD 36C-6HZ  
 WELL LOCATION CERTIFICATE  
 440' FSL & 1749' FWL SESW (SURFACE)  
 LOCATED IN SECTION 7  
 410' FSL & 2307' FWL SESW (BOTTOM)  
 LOCATED IN SECTION 6  
 T1N, R65W, 6TH P.M.  
 WELD COUNTY, COLORADO

**Kerr-McGee Oil & Gas Onshore L.P.**  
 1099 18th Street  
 Denver, Colorado 80202



## CONSULTING, LLC

SHERIDAN OFFICE: 2155 North Main Street, Sheridan, Wyoming 82801, Phone 307-674-0609  
 LOVELAND OFFICE: 1635 Foxtrail Drive, Suite 204, Loveland, Colorado 80538, Phone 970-776-4331

DRAFTED BY: APF	CHECKED BY: BJR	SHEET NO: <b>1</b> 1 OF 2
DATE DRAFTED: 7/3/12	DATE SURVEYED: 6/10/12	
REVISED: 3/21/14	FILE NAME: 12-59	

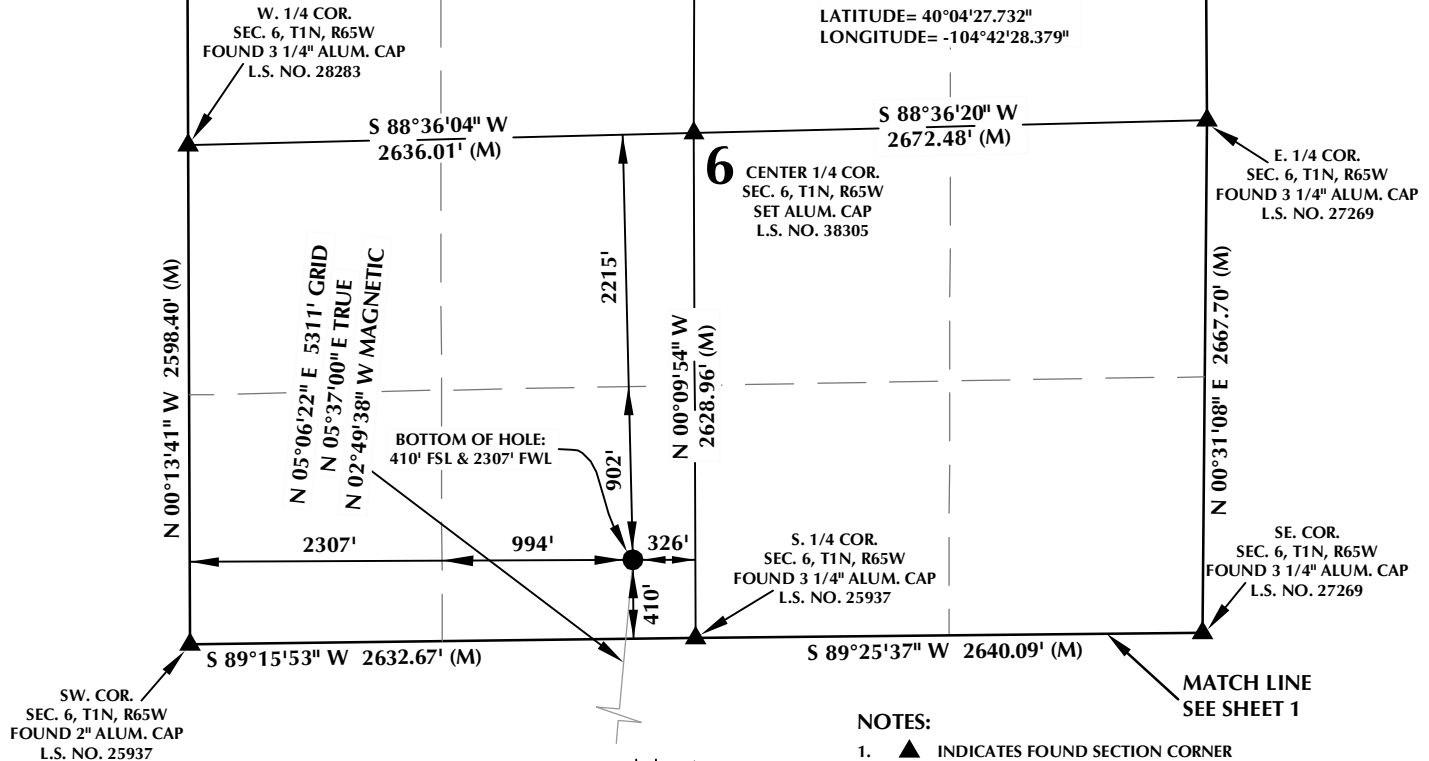
# T1N, R65W

**SURFACE LOCATION**  
 GROUND ELEVATION= 5000.6'  
 NAD 83  
 LATITUDE= 40.059859°  
 LONGITUDE= -104.709741°

LATITUDE= 40°03'35.494"  
 LONGITUDE= -104°42'35.067"

**BOTTOM HOLE LOCATION**  
 NAD 83  
 LATITUDE= 40.074370°  
 LONGITUDE= -104.707883°

LATITUDE= 40°04'27.732"  
 LONGITUDE= -104°42'28.379"

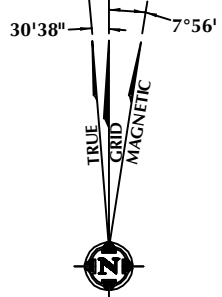


- NOTES:**
- ▲ INDICATES FOUND SECTION CORNER
  - INDICATES CALCULATED CORNER
  - ELEVATION BASED ON NAVD88 (GEOID09)
  - BASIS OF BEARING DERIVED FROM COLORADO COORDINATE SYSTEM 1983 NORTH ZONE UNLESS OTHERWISE NOTED.
  - ALL MEASURED DISTANCES ARE GRID. COMBINED SCALE FACTOR: .99972680
  - OPERATOR: ROB WILSON / PDOP = 1.7
  - SEE ADDENDUM TO WELL LOCATION CERTIFICATE FOR EXISTING IMPROVEMENTS WITHIN 500' OF THE WELL PAD.
  - WELL FOOTAGES ARE MEASURED AT RIGHT ANGLES TO THE SECTION LINES.
  - THE BOTTOM OF HOLE BEARS N05°06'22"E, 5311' FROM THE SURFACE LOCATION.

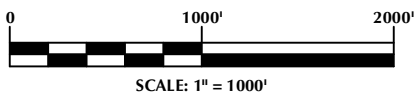
**CERTIFICATE OF SURVEYOR:**

THIS IS TO CERTIFY THAT THE ABOVE PLAT WAS PREPARED FROM FIELD NOTES OF ACTUAL SURVEY MADE BY ME OR UNDER MY SUPERVISION AND THAT THE SAME ARE TRUE AND CORRECT TO THE BEST OF MY KNOWLEDGE AND BELIEF. THIS CERTIFICATE DOES NOT REPRESENT A LAND SURVEY PLAT OR IMPROVEMENT SURVEY PLAT AS DEFINED BY C.S. 38-51-102 AND CANNOT BE RELIED UPON TO DETERMINE OWNERSHIP.

*Benjamin J. Reenders*  
 BENJAMIN J. REENDERS  
 PROFESSIONAL LAND SURVEYOR  
 COLORADO REGISTRATION NUMBER 48321/14



**NOTE:**  
 MAGNETIC NORTH IS CURRENT AS OF 3/18/2014.  
 MAGNETIC NORTH CHANGES WEST 0°08' PER YEAR.



K:\MADARKO\2012\2012\_09\_COLORADO\_N\_HZ\PLAT\STEWARD\_35N-6HZ\STEWARD\_35N-6HZ\_PAT.dwg, 3/21/14 8:59:46 AM, lgs

**WELL PAD - STEWARD 35N-6HZ**

STEWARD 36C-6HZ  
 WELL LOCATION CERTIFICATE  
 440' FSL & 1749' FWL SESW (SURFACE)  
 LOCATED IN SECTION 7  
 410' FSL & 2307' FWL SESW (BOTTOM)  
 LOCATED IN SECTION 6  
 T1N, R65W, 6TH P.M.  
 WELD COUNTY, COLORADO

**Kerr-McGee Oil & Gas Onshore L.P.**  
 1099 18th Street  
 Denver, Colorado 80202



**CONSULTING, LLC**

SHERIDAN OFFICE  
 2155 North Main Street  
 Sheridan, Wyoming 82801  
 Phone 307-674-0609

LOVELAND OFFICE  
 1635 Foxtrail Drive, Suite 204  
 Loveland, Colorado 80538  
 Phone 970-776-4331

DRAFTED BY:	APF	CHECKED BY:	BJR	SHEET NO: <b>2</b> 2 OF 2
DATE DRAFTED:	7/3/12	DATE SURVEYED:	6/10/12	
REVISED:	3/21/14	FILE NAME:	12-59	