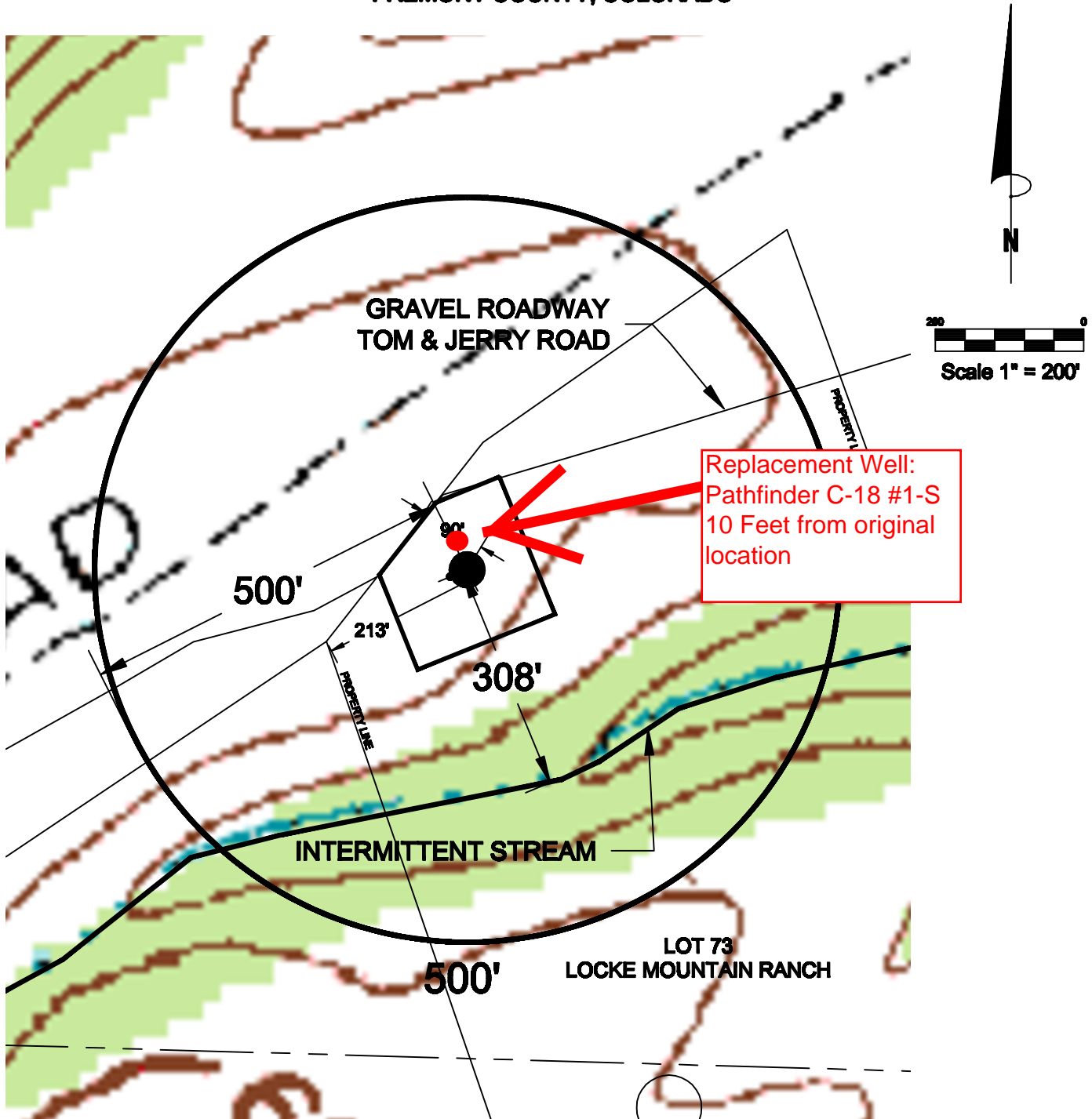


500 FOOT IMPROVEMENTS

for AUS-TEX EXPLORATION INC - PATHFINDER C-18 #1

LOCATED IN THE NE 1/4 OF SECTION 18,
T. 20 S., R. 69 W. OF THE 6TH P.M.,
FREMONT COUNTY, COLORADO



DISTANCES FROM WELL HEAD

BUILDING	ABOVE GROUND UTILITY	PUBLIC ROAD	RAILROAD
N 67°53'50"E	S 60°11'59" E	S 60°11'59" E	N 10° E
988 FEET	3471 FEET	3465 FEET	5.58 MILES

500 FOOT IMPROVEMENTS

NO IMPROVEMENTS
WITHIN 500' RADIUS

CORNERSTONE
LAND SURVEYING, LLC

1022 PHAY AVE.
CANON CITY, COLORADO 81212
719-275-8881

MARCH 3, 2014

JOB # AUSTINEXP