

WPX Energy Rocky Mountain, LLC

1974 Alum. Cap  
0.2' High  
Lat: 39.459759°  
Long: 108.049217°

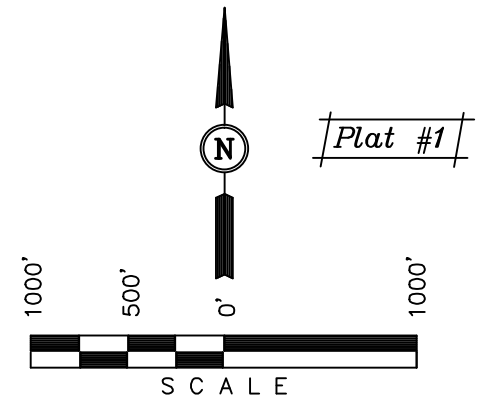
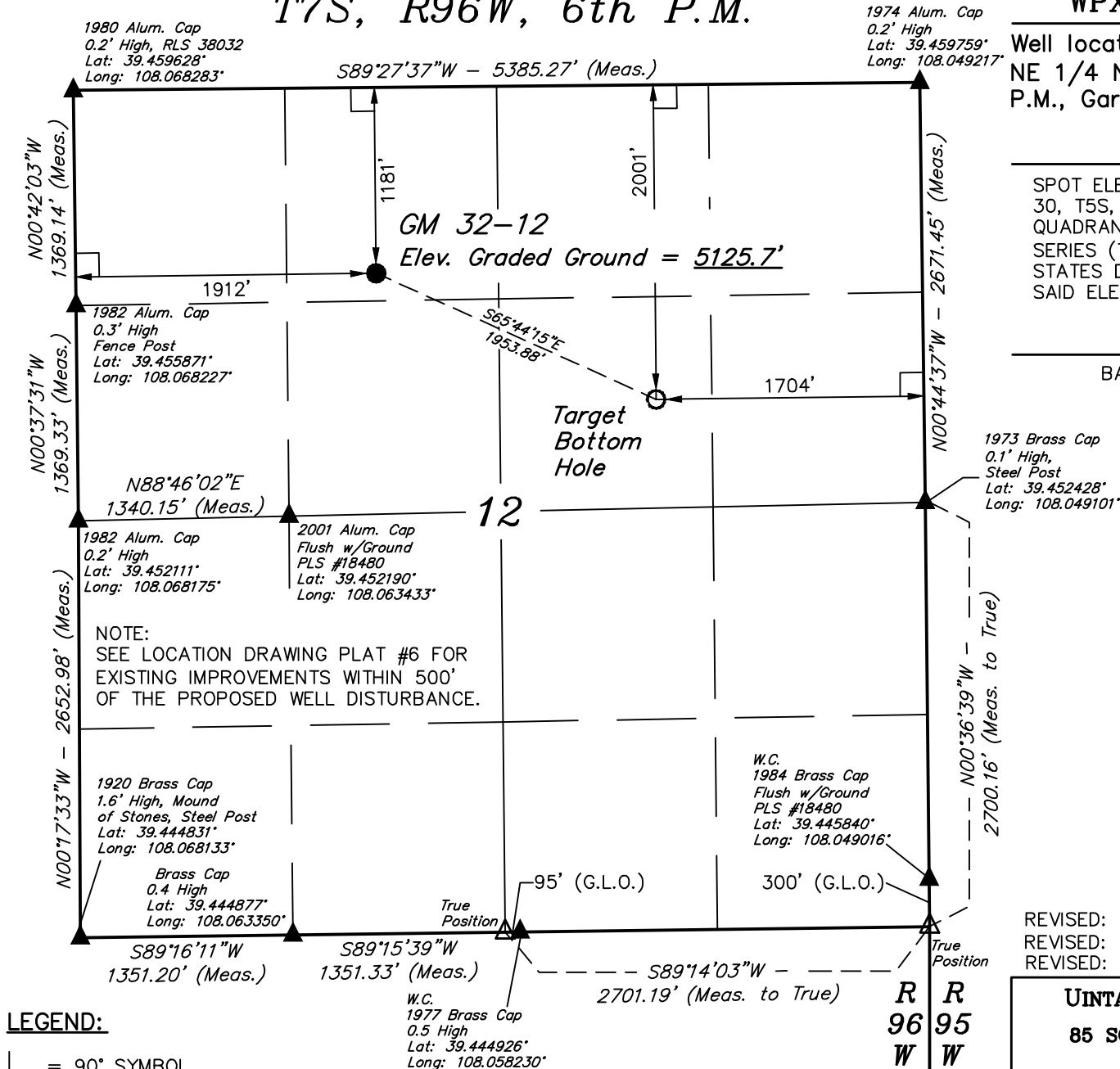
Well location, GM 32-12, located as shown in the NE 1/4 NW 1/4 of Section 12, T7S, R96W, 6th P.M., Garfield County, Colorado.

## BASIS OF ELEVATION

SPOT ELEVATION AT THE NORTHWEST CORNER OF SECTION 30, T5S, R95W, 6th P.M. TAKEN FROM THE FORKED GULCH QUADRANGLE, COLORADO, GARFIELD COUNTY, 7.5 MINUTE SERIES (TOPOGRAPHICAL MAP) PUBLISHED BY THE UNITED STATES DEPARTMENT OF THE INTERIOR, GEOLOGICAL SURVEY. SAID ELEVATION IS MARKED AS BEING 5966 FEET.

## BASIS OF BEARINGS

BASIS OF BEARINGS IS A G.P.S. OBSERVATION.



# CERTIFICATE

THIS IS TO CERTIFY THAT THE ABOVE PLAT WAS PREPARED AND  
LOCATION AS SHOWN WAS STAKED ON THE GROUND FROM FIELD  
NOTES OF ACTUAL SURVEYS MADE BY ME OR UNDER MY  
SUPERVISION AND THAT THE SAME ARE TRUE AND CORRECT TO  
THE BEST OF MY KNOWLEDGE AND BELIEF.

REGISTERED LAND SURVEYOR  
REGISTRATION NO. 17492  
STATE OF COLORADO

REVISED: 04-25-14  
REVISED: 11-19-13  
REVISED: 03-20-13

# UINTAH ENGINEERING & LAND SURVEYING

85 SOUTH 200 EAST - VERNAL, UTAH 84078

(435) 789-1017

SCALE  $1'' = 1000'$

DATE SURVEYED:	01-30-13
----------------	----------

PARTY	Brian Baker T.M. M.D.
-------	-----------------------

REFERENCES	G.L.O. PLAT
------------	-------------

WEATHER	COLD
---------	------

FILE
WPX Energy Rocky Mountain, LLC

**LEGEND:**

**L** = 90° SYMBOL

● = PROPOSED WELL HEAD.

▲ = SECTION CORNERS LOCATED.

△ = SECTION CORNERS  
RE-ESTABLISHED.

(Not Set on Ground.)

<b>NAD 83 (TARGET BOTTOM HOLE)</b>	<b>NAD 83 (SURFACE LOCATION)</b>
LATITUDE = 39°27'15.21" (39.454225)	LATITUDE = 39°27'23.16" (39.456433)
LONGITUDE = 108°03'18.58" (108.055161)	LONGITUDE = 108°03'41.28" (108.061467)
<b>STATE PLANE--(COLO. CENTRAL--NAD 83)</b>	<b>STATE PLANE--(COLO. CENTRAL--NAD 83)</b>
N = 1600477.10	N = 1601330.53
E = 2278599.50	E = 2276842.56