

EXTRACTION OIL & GAS

Location: COLORADO Slot: SLOT#12 WINDER #12(962'FNL & 684'FEL,SEC.09)
Field: WELD COUNTY (NAD83/TRUE NORTH) Well: WINDER #12
Facility: SEC.09-T06N-R67W Wellbore: WINDER #12 PWB

Plot reference wellpath is WINDER #12 (REV-A.0) PWP

True vertical depths are referenced to RIG (RKB)	Grid System: NAD83 / Lambert Colorado SP, Northern Zone (501), US feet
Measured depths are referenced to RIG (RKB)	North Reference: True north
RIG (RKB) to Mean Sea Level: 4892 feet	Scale: True distance
Mean Sea Level to Mud line (At Slot: SLOT#12 WINDER #12(962'FNL & 684'FEL,SEC.09)): 0 feet	Depths are in feet
Coordinates are in feet referenced to Slot	Created by: painsetr on 4/8/2014

Location Information

Facility Name				Grid East (US ft)	Grid North (US ft)	Latitude	Longitude
SEC.09-T06N-R67W				3169265.228	1428175.850	40°30'25.736"N	104°53'28.612"W
Slot	Local N (ft)	Local E (ft)	Grid East (US ft)	Grid North (US ft)	Latitude	Longitude	
SLOT#12 WINDER #12(962'FNL & 684'FEL,SEC.09)	-285.99	-2.47	3169264.720	1427889.860	40°30'22.910"N	104°53'28.644"W	
RIG (RKB) to Mud line (At Slot: SLOT#12 WINDER #12(962'FNL & 684'FEL,SEC.09))						4892ft	
Mean Sea Level to Mud line (At Slot: SLOT#12 WINDER #12(962'FNL & 684'FEL,SEC.09))						0ft	
RIG (RKB) to Mean Sea Level						4892ft	

Targets

Name	MD (ft)	TVD (ft)	Local N (ft)	Local E (ft)	Grid East (US ft)	Grid North (US ft)	Latitude	Longitude
TWELL/WINDER 1/2 SECTION 08		56.00	-3048.19	-9582.23	3159703.97	1424776.07	40°29'52.771"N	104°55'32.678"W
TWELL/WINDER 1/2 SECTION 09		56.00	-3048.19	-9582.23	3159703.97	1424776.07	40°29'52.771"N	104°55'32.678"W
TWELL/WINDER SECTION 08		56.00	-3048.19	-9582.23	3159703.97	1424776.07	40°29'52.771"N	104°55'32.678"W
TWELL/WINDER SECTION 09		56.00	-3048.19	-9582.23	3159703.97	1424776.07	40°29'52.771"N	104°55'32.678"W
WINDER #12 BHL ON PLAT REV-1(2283'FNL & 460'FWL,SEC.08)	17437.76	7270.00	-1488.62	-9347.77	3159927.71	1426337.17	40°30'08.183"N	104°55'29.651"W
WINDER #12 LANDING POINT	7878.60	7270.00	-1513.70	211.36	3169486.45	1426377.70	40°30'07.952"N	104°53'25.908"W
TWELL/WINDER PAD CENTER SECTION HARDLINES(460'SETBACKS)	7418.00	-3048.19	-9582.23	3159703.97	1424776.07	40°29'52.771"N	104°55'32.678"W	

Survey Program

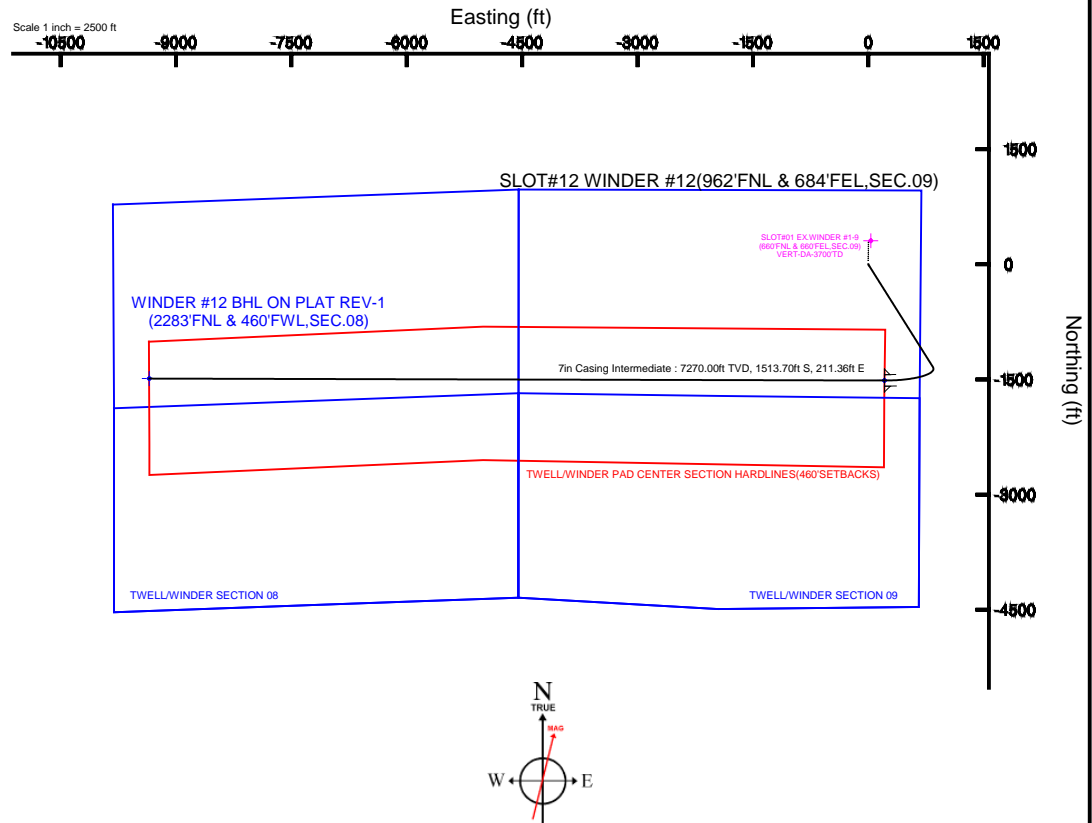
Start MD (ft)	End MD (ft)	Tool	Model	Log Name/Comment	Wellbore
24.00	19000.00	NaviTrak	NaviTrak (Standard)		WINDER #12 PWB

Well Profile Data

Design Comment	MD (ft)	Inc (°)	Az (°)	TVD (ft)	Local N (ft)	Local E (ft)	DLS (°/100ft)	VS (ft)
Tie On	24.00	0.000	147.839	24.00	0.00	0.00	0.00	0.00
End of Tangent	800.00	0.000	147.839	800.00	0.00	0.00	0.00	0.00
End of Build	1623.56	16.471	147.839	1612.27	-99.53	62.58	2.00	-46.15
End of Tangent	6781.74	16.471	147.839	6558.77	-1337.63	841.09	0.00	-620.26
End of 3D Arc	7878.60	90.000	270.150	7270.00	-1513.70	211.36	9.00	29.33
End of Tangent	17437.76	90.000	270.150	7270.00	-1488.62	-9347.77	0.00	9465.56

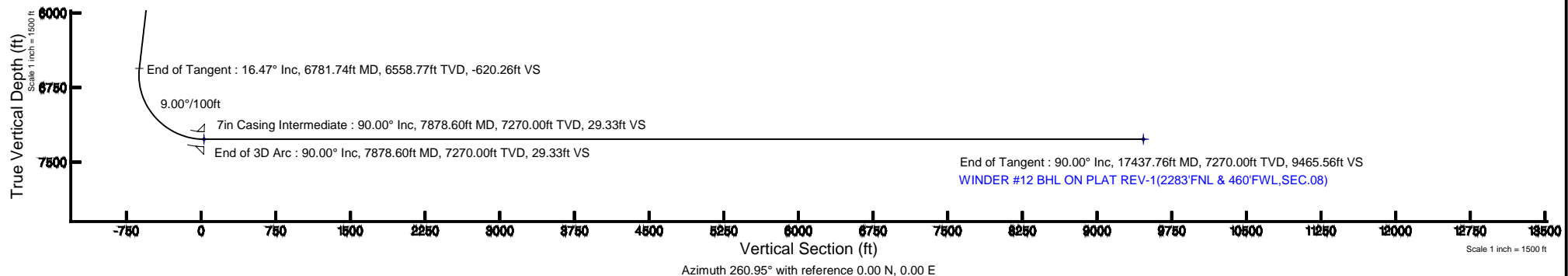
Wellpath Comments

MD (ft)	X (ft)	Y (ft)	TVD (ft)	Inclination (°)	Azimuth (°)	VS (ft)	Comment
7568.14	509.70	-1496.49	7198.00	62.961	262.823	-268.01	NIO A
7776.02	313.49	-1511.97	7262.00	81.046	267.894	-71.81	NIO B



BGGM (1945.0 to 2015.0) Dip: 67.01° Field: 52838.7 nT
Magnetic North is 8.61 degrees East of True North (at 4/7/2014)

To correct azimuth from Magnetic to True add 8.61 degrees





Planned Wellpath Report

WINDER #12 (REV-A.0) PWP

Page 1 of 10



REFERENCE WELLPATH IDENTIFICATION

Operator	EXTRACTION OIL & GAS	Slot	SLOT#12 WINDER #12(962'FNL & 684'FEL,SEC.09)
Area	COLORADO	Well	WINDER #12
Field	WELD COUNTY (NAD83/TRUE NORTH)	Wellbore	WINDER #12 PWB
Facility	SEC.09-T06N-R67W		

REPORT SETUP INFORMATION

Projection System	NAD83 / Lambert Colorado SP, Northern Zone (501), US feet	Software System	WellArchitect® 4.0.0
North Reference	True	User	Painsetr
Scale	0.999967	Report Generated	4/8/2014 at 1:14:17 PM
Convergence at slot	n/a	Database/Source file	WA_Denver/WINDER_#12_PWB.xml

WELLPATH LOCATION

	Local coordinates		Grid coordinates		Geographic coordinates	
	North[ft]	East[ft]	Easting[US ft]	Northing[US ft]	Latitude	Longitude
Slot Location	-285.99	-2.47	3169264.72	1427889.86	40°30'22.910"N	104°53'28.644"W
Facility Reference Pt			3169265.23	1428175.85	40°30'25.736"N	104°53'28.612"W
Field Reference Pt			3185481.27	1419166.81	40°28'55.560"N	104°49'59.556"W

WELLPATH DATUM

Calculation method	Minimum curvature	RIG (RKB) to Facility Vertical Datum	4892.00ft
Horizontal Reference Pt	Slot	RIG (RKB) to Mean Sea Level	4892.00ft
Vertical Reference Pt	RIG (RKB)	RIG (RKB) to Mud Line at Slot (SLOT#12 WINDER #12(962'FNL & 684'FEL,SEC.09))	4892.00ft
MD Reference Pt	RIG (RKB)	Section Origin	N 0.00, E 0.00 ft
Field Vertical Reference	Mean Sea Level	Section Azimuth	260.95°



Planned Wellpath Report

WINDER #12 (REV-A.0) PWP

Page 2 of 10



REFERENCE WELLPATH IDENTIFICATION

Operator	EXTRACTION OIL & GAS	Slot	SLOT#12 WINDER #12(962'FNL & 684'FEL,SEC.09)
Area	COLORADO	Well	WINDER #12
Field	WELD COUNTY (NAD83/TRUE NORTH)	Wellbore	WINDER #12 PWB
Facility	SEC.09-T06N-R67W		

WELLPATH DATA (181 stations) † = interpolated/extrapolated station

MD [ft]	Inclination [°]	Azimuth [°]	TVD [ft]	Vert Sect [ft]	North [ft]	East [ft]	DLS [°/100ft]	Comments
0.00†	0.000	147.839	0.00	0.00	0.00	0.00	0.00	
24.00	0.000	147.839	24.00	0.00	0.00	0.00	0.00	Tie On
124.00†	0.000	147.839	124.00	0.00	0.00	0.00	0.00	
224.00†	0.000	147.839	224.00	0.00	0.00	0.00	0.00	
324.00†	0.000	147.839	324.00	0.00	0.00	0.00	0.00	
424.00†	0.000	147.839	424.00	0.00	0.00	0.00	0.00	
524.00†	0.000	147.839	524.00	0.00	0.00	0.00	0.00	
624.00†	0.000	147.839	624.00	0.00	0.00	0.00	0.00	
724.00†	0.000	147.839	724.00	0.00	0.00	0.00	0.00	
800.00	0.000	147.839	800.00	0.00	0.00	0.00	0.00	End of Tangent
824.00†	0.480	147.839	824.00	-0.04	-0.09	0.05	2.00	
924.00†	2.480	147.839	923.96	-1.05	-2.27	1.43	2.00	
1024.00†	4.480	147.839	1023.77	-3.44	-7.41	4.66	2.00	
1124.00†	6.480	147.839	1123.31	-7.18	-15.49	9.74	2.00	
1224.00†	8.480	147.839	1222.45	-12.29	-26.51	16.67	2.00	
1324.00†	10.480	147.839	1321.08	-18.76	-40.46	25.44	2.00	
1424.00†	12.480	147.839	1419.08	-26.57	-57.30	36.03	2.00	
1524.00†	14.480	147.839	1516.32	-35.72	-77.04	48.44	2.00	
1623.56	16.471	147.839	1612.27	-46.15	-99.53	62.58	2.00	End of Build
1624.00†	16.471	147.839	1612.69	-46.20	-99.63	62.65	0.00	
1724.00†	16.471	147.839	1708.58	-57.33	-123.63	77.74	0.00	
1824.00†	16.471	147.839	1804.48	-68.46	-147.64	92.83	0.00	
1924.00†	16.471	147.839	1900.37	-79.59	-171.64	107.92	0.00	
2024.00†	16.471	147.839	1996.27	-90.72	-195.64	123.02	0.00	
2124.00†	16.471	147.839	2092.17	-101.85	-219.64	138.11	0.00	
2224.00†	16.471	147.839	2188.06	-112.98	-243.65	153.20	0.00	
2324.00†	16.471	147.839	2283.96	-124.11	-267.65	168.29	0.00	
2424.00†	16.471	147.839	2379.85	-135.24	-291.65	183.39	0.00	
2524.00†	16.471	147.839	2475.75	-146.37	-315.65	198.48	0.00	
2624.00†	16.471	147.839	2571.65	-157.50	-339.66	213.57	0.00	



Planned Wellpath Report

WINDER #12 (REV-A.0) PWP

Page 3 of 10



REFERENCE WELLPATH IDENTIFICATION

Operator	EXTRACTION OIL & GAS	Slot	SLOT#12 WINDER #12(962'FNL & 684'FEL,SEC.09)
Area	COLORADO	Well	WINDER #12
Field	WELD COUNTY (NAD83/TRUE NORTH)	Wellbore	WINDER #12 PWB
Facility	SEC.09-T06N-R67W		

WELLPATH DATA (181 stations) † = interpolated/extrapolated station

MD [ft]	Inclination [°]	Azimuth [°]	TVD [ft]	Vert Sect [ft]	North [ft]	East [ft]	DLS [°/100ft]	Comments
2724.00†	16.471	147.839	2667.54	-168.63	-363.66	228.67	0.00	
2824.00†	16.471	147.839	2763.44	-179.76	-387.66	243.76	0.00	
2924.00†	16.471	147.839	2859.34	-190.89	-411.67	258.85	0.00	
3024.00†	16.471	147.839	2955.23	-202.02	-435.67	273.94	0.00	
3124.00†	16.471	147.839	3051.13	-213.15	-459.67	289.04	0.00	
3224.00†	16.471	147.839	3147.02	-224.28	-483.67	304.13	0.00	
3324.00†	16.471	147.839	3242.92	-235.41	-507.68	319.22	0.00	
3424.00†	16.471	147.839	3338.82	-246.54	-531.68	334.31	0.00	
3524.00†	16.471	147.839	3434.71	-257.67	-555.68	349.41	0.00	
3624.00†	16.471	147.839	3530.61	-268.80	-579.68	364.50	0.00	
3724.00†	16.471	147.839	3626.51	-279.93	-603.69	379.59	0.00	
3824.00†	16.471	147.839	3722.40	-291.06	-627.69	394.68	0.00	
3924.00†	16.471	147.839	3818.30	-302.19	-651.69	409.78	0.00	
4024.00†	16.471	147.839	3914.19	-313.32	-675.69	424.87	0.00	
4124.00†	16.471	147.839	4010.09	-324.45	-699.70	439.96	0.00	
4224.00†	16.471	147.839	4105.99	-335.58	-723.70	455.06	0.00	
4324.00†	16.471	147.839	4201.88	-346.71	-747.70	470.15	0.00	
4424.00†	16.471	147.839	4297.78	-357.84	-771.71	485.24	0.00	
4524.00†	16.471	147.839	4393.68	-368.97	-795.71	500.33	0.00	
4624.00†	16.471	147.839	4489.57	-380.10	-819.71	515.43	0.00	
4724.00†	16.471	147.839	4585.47	-391.23	-843.71	530.52	0.00	
4824.00†	16.471	147.839	4681.36	-402.36	-867.72	545.61	0.00	
4924.00†	16.471	147.839	4777.26	-413.49	-891.72	560.70	0.00	
5024.00†	16.471	147.839	4873.16	-424.62	-915.72	575.80	0.00	
5124.00†	16.471	147.839	4969.05	-435.75	-939.72	590.89	0.00	
5224.00†	16.471	147.839	5064.95	-446.88	-963.73	605.98	0.00	
5324.00†	16.471	147.839	5160.84	-458.01	-987.73	621.07	0.00	
5424.00†	16.471	147.839	5256.74	-469.14	-1011.73	636.17	0.00	
5524.00†	16.471	147.839	5352.64	-480.27	-1035.74	651.26	0.00	
5624.00†	16.471	147.839	5448.53	-491.40	-1059.74	666.35	0.00	



Planned Wellpath Report

WINDER #12 (REV-A.0) PWP

Page 4 of 10



REFERENCE WELLPATH IDENTIFICATION

Operator	EXTRACTION OIL & GAS	Slot	SLOT#12 WINDER #12(962'FNL & 684'FEL,SEC.09)
Area	COLORADO	Well	WINDER #12
Field	WELD COUNTY (NAD83/TRUE NORTH)	Wellbore	WINDER #12 PWB
Facility	SEC.09-T06N-R67W		

WELLPATH DATA (181 stations) † = interpolated/extrapolated station

MD [ft]	Inclination [°]	Azimuth [°]	TVD [ft]	Vert Sect [ft]	North [ft]	East [ft]	DLS [°/100ft]	Comments
5724.00†	16.471	147.839	5544.43	-502.53	-1083.74	681.44	0.00	
5824.00†	16.471	147.839	5640.33	-513.66	-1107.74	696.54	0.00	
5924.00†	16.471	147.839	5736.22	-524.79	-1131.75	711.63	0.00	
6024.00†	16.471	147.839	5832.12	-535.92	-1155.75	726.72	0.00	
6124.00†	16.471	147.839	5928.01	-547.05	-1179.75	741.82	0.00	
6224.00†	16.471	147.839	6023.91	-558.18	-1203.75	756.91	0.00	
6324.00†	16.471	147.839	6119.81	-569.31	-1227.76	772.00	0.00	
6424.00†	16.471	147.839	6215.70	-580.44	-1251.76	787.09	0.00	
6524.00†	16.471	147.839	6311.60	-591.57	-1275.76	802.19	0.00	
6624.00†	16.471	147.839	6407.50	-602.70	-1299.77	817.28	0.00	
6724.00†	16.471	147.839	6503.39	-613.83	-1323.77	832.37	0.00	
6781.74	16.471	147.839	6558.77	-620.26	-1337.63	841.09	0.00	End of Tangent
6824.00†	14.849	160.623	6599.46	-623.58	-1347.81	846.07	9.00	
6924.00†	14.601	196.568	6696.38	-620.42	-1372.03	846.73	9.00	
7024.00†	19.095	223.946	6792.21	-601.87	-1395.94	831.76	9.00	
7124.00†	25.976	239.294	6884.60	-568.39	-1418.94	801.51	9.00	
7224.00†	33.814	248.245	6971.27	-520.79	-1440.48	756.75	9.00	
7324.00†	42.076	254.082	7050.08	-460.26	-1460.03	698.56	9.00	
7424.00†	50.551	258.285	7119.11	-388.28	-1477.09	628.39	9.00	
7524.00†	59.144	261.565	7176.64	-306.62	-1491.26	547.96	9.00	
7624.00†	67.807	264.299	7221.26	-217.30	-1502.17	459.26	9.00	
7724.00†	76.509	266.713	7251.88	-122.51	-1509.58	364.45	9.00	
7824.00†	85.233	268.956	7267.73	-24.59	-1513.28	265.89	9.00	
7878.60	90.000	270.150	7270.00 ¹	29.33	-1513.70	211.36	9.00	End of 3D Arc
7924.00†	90.000	270.150	7270.00	74.14	-1513.58	165.96	0.00	
8024.00†	90.000	270.150	7270.00	172.86	-1513.32	65.96	0.00	
8124.00†	90.000	270.150	7270.00	271.57	-1513.06	-34.04	0.00	
8224.00†	90.000	270.150	7270.00	370.29	-1512.80	-134.04	0.00	
8324.00†	90.000	270.150	7270.00	469.00	-1512.53	-234.04	0.00	
8424.00†	90.000	270.150	7270.00	567.71	-1512.27	-334.04	0.00	



Planned Wellpath Report

WINDER #12 (REV-A.0) PWP

Page 5 of 10



REFERENCE WELLPATH IDENTIFICATION

Operator	EXTRACTION OIL & GAS	Slot	SLOT#12 WINDER #12(962'FNL & 684'FEL,SEC.09)
Area	COLORADO	Well	WINDER #12
Field	WELD COUNTY (NAD83/TRUE NORTH)	Wellbore	WINDER #12 PWB
Facility	SEC.09-T06N-R67W		

WELLPATH DATA (181 stations) † = interpolated/extrapolated station

MD [ft]	Inclination [°]	Azimuth [°]	TVD [ft]	Vert Sect [ft]	North [ft]	East [ft]	DLS [°/100ft]	Comments
8524.00†	90.000	270.150	7270.00	666.43	-1512.01	-434.04	0.00	
8624.00†	90.000	270.150	7270.00	765.14	-1511.75	-534.04	0.00	
8724.00†	90.000	270.150	7270.00	863.86	-1511.48	-634.04	0.00	
8824.00†	90.000	270.150	7270.00	962.57	-1511.22	-734.04	0.00	
8924.00†	90.000	270.150	7270.00	1061.28	-1510.96	-834.04	0.00	
9024.00†	90.000	270.150	7270.00	1160.00	-1510.70	-934.04	0.00	
9124.00†	90.000	270.150	7270.00	1258.71	-1510.43	-1034.04	0.00	
9224.00†	90.000	270.150	7270.00	1357.43	-1510.17	-1134.04	0.00	
9324.00†	90.000	270.150	7270.00	1456.14	-1509.91	-1234.04	0.00	
9424.00†	90.000	270.150	7270.00	1554.85	-1509.65	-1334.04	0.00	
9524.00†	90.000	270.150	7270.00	1653.57	-1509.38	-1434.04	0.00	
9624.00†	90.000	270.150	7270.00	1752.28	-1509.12	-1534.04	0.00	
9724.00†	90.000	270.150	7270.00	1851.00	-1508.86	-1634.04	0.00	
9824.00†	90.000	270.150	7270.00	1949.71	-1508.60	-1734.04	0.00	
9924.00†	90.000	270.150	7270.00	2048.42	-1508.33	-1834.04	0.00	
10024.00†	90.000	270.150	7270.00	2147.14	-1508.07	-1934.04	0.00	
10124.00†	90.000	270.150	7270.00	2245.85	-1507.81	-2034.04	0.00	
10224.00†	90.000	270.150	7270.00	2344.57	-1507.55	-2134.03	0.00	
10324.00†	90.000	270.150	7270.00	2443.28	-1507.28	-2234.03	0.00	
10424.00†	90.000	270.150	7270.00	2541.99	-1507.02	-2334.03	0.00	
10524.00†	90.000	270.150	7270.00	2640.71	-1506.76	-2434.03	0.00	
10624.00†	90.000	270.150	7270.00	2739.42	-1506.50	-2534.03	0.00	
10724.00†	90.000	270.150	7270.00	2838.14	-1506.24	-2634.03	0.00	
10824.00†	90.000	270.150	7270.00	2936.85	-1505.97	-2734.03	0.00	
10924.00†	90.000	270.150	7270.00	3035.56	-1505.71	-2834.03	0.00	
11024.00†	90.000	270.150	7270.00	3134.28	-1505.45	-2934.03	0.00	
11124.00†	90.000	270.150	7270.00	3232.99	-1505.19	-3034.03	0.00	
11224.00†	90.000	270.150	7270.00	3331.71	-1504.92	-3134.03	0.00	
11324.00†	90.000	270.150	7270.00	3430.42	-1504.66	-3234.03	0.00	
11424.00†	90.000	270.150	7270.00	3529.13	-1504.40	-3334.03	0.00	



Planned Wellpath Report

WINDER #12 (REV-A.0) PWP

Page 6 of 10



REFERENCE WELLPATH IDENTIFICATION

Operator	EXTRACTION OIL & GAS	Slot	SLOT#12 WINDER #12(962'FNL & 684'FEL,SEC.09)
Area	COLORADO	Well	WINDER #12
Field	WELD COUNTY (NAD83/TRUE NORTH)	Wellbore	WINDER #12 PWB
Facility	SEC.09-T06N-R67W		

WELLPATH DATA (181 stations) † = interpolated/extrapolated station

MD [ft]	Inclination [°]	Azimuth [°]	TVD [ft]	Vert Sect [ft]	North [ft]	East [ft]	DLS [°/100ft]	Comments
11524.00†	90.000	270.150	7270.00	3627.85	-1504.14	-3434.03	0.00	
11624.00†	90.000	270.150	7270.00	3726.56	-1503.87	-3534.03	0.00	
11724.00†	90.000	270.150	7270.00	3825.28	-1503.61	-3634.03	0.00	
11824.00†	90.000	270.150	7270.00	3923.99	-1503.35	-3734.03	0.00	
11924.00†	90.000	270.150	7270.00	4022.70	-1503.09	-3834.03	0.00	
12024.00†	90.000	270.150	7270.00	4121.42	-1502.82	-3934.03	0.00	
12124.00†	90.000	270.150	7270.00	4220.13	-1502.56	-4034.03	0.00	
12224.00†	90.000	270.150	7270.00	4318.85	-1502.30	-4134.03	0.00	
12324.00†	90.000	270.150	7270.00	4417.56	-1502.04	-4234.03	0.00	
12424.00†	90.000	270.150	7270.00	4516.27	-1501.77	-4334.03	0.00	
12524.00†	90.000	270.150	7270.00	4614.99	-1501.51	-4434.03	0.00	
12624.00†	90.000	270.150	7270.00	4713.70	-1501.25	-4534.03	0.00	
12724.00†	90.000	270.150	7270.00	4812.42	-1500.99	-4634.03	0.00	
12824.00†	90.000	270.150	7270.00	4911.13	-1500.72	-4734.03	0.00	
12924.00†	90.000	270.150	7270.00	5009.84	-1500.46	-4834.03	0.00	
13024.00†	90.000	270.150	7270.00	5108.56	-1500.20	-4934.03	0.00	
13124.00†	90.000	270.150	7270.00	5207.27	-1499.94	-5034.02	0.00	
13224.00†	90.000	270.150	7270.00	5305.99	-1499.67	-5134.02	0.00	
13324.00†	90.000	270.150	7270.00	5404.70	-1499.41	-5234.02	0.00	
13424.00†	90.000	270.150	7270.00	5503.41	-1499.15	-5334.02	0.00	
13524.00†	90.000	270.150	7270.00	5602.13	-1498.89	-5434.02	0.00	
13624.00†	90.000	270.150	7270.00	5700.84	-1498.62	-5534.02	0.00	
13724.00†	90.000	270.150	7270.00	5799.56	-1498.36	-5634.02	0.00	
13824.00†	90.000	270.150	7270.00	5898.27	-1498.10	-5734.02	0.00	
13924.00†	90.000	270.150	7270.00	5996.98	-1497.84	-5834.02	0.00	
14024.00†	90.000	270.150	7270.00	6095.70	-1497.57	-5934.02	0.00	
14124.00†	90.000	270.150	7270.00	6194.41	-1497.31	-6034.02	0.00	
14224.00†	90.000	270.150	7270.00	6293.13	-1497.05	-6134.02	0.00	
14324.00†	90.000	270.150	7270.00	6391.84	-1496.79	-6234.02	0.00	
14424.00†	90.000	270.150	7270.00	6490.55	-1496.52	-6334.02	0.00	



Planned Wellpath Report

WINDER #12 (REV-A.0) PWP

Page 7 of 10



REFERENCE WELLPATH IDENTIFICATION

Operator	EXTRACTION OIL & GAS	Slot	SLOT#12 WINDER #12(962'FNL & 684'FEL,SEC.09)
Area	COLORADO	Well	WINDER #12
Field	WELD COUNTY (NAD83/TRUE NORTH)	Wellbore	WINDER #12 PWB
Facility	SEC.09-T06N-R67W		

WELLPATH DATA (181 stations) † = interpolated/extrapolated station

MD [ft]	Inclination [°]	Azimuth [°]	TVD [ft]	Vert Sect [ft]	North [ft]	East [ft]	DLS [°/100ft]	Comments
14524.00†	90.000	270.150	7270.00	6589.27	-1496.26	-6434.02	0.00	
14624.00†	90.000	270.150	7270.00	6687.98	-1496.00	-6534.02	0.00	
14724.00†	90.000	270.150	7270.00	6786.70	-1495.74	-6634.02	0.00	
14824.00†	90.000	270.150	7270.00	6885.41	-1495.47	-6734.02	0.00	
14924.00†	90.000	270.150	7270.00	6984.12	-1495.21	-6834.02	0.00	
15024.00†	90.000	270.150	7270.00	7082.84	-1494.95	-6934.02	0.00	
15124.00†	90.000	270.150	7270.00	7181.55	-1494.69	-7034.02	0.00	
15224.00†	90.000	270.150	7270.00	7280.27	-1494.43	-7134.02	0.00	
15324.00†	90.000	270.150	7270.00	7378.98	-1494.16	-7234.02	0.00	
15424.00†	90.000	270.150	7270.00	7477.69	-1493.90	-7334.02	0.00	
15524.00†	90.000	270.150	7270.00	7576.41	-1493.64	-7434.02	0.00	
15624.00†	90.000	270.150	7270.00	7675.12	-1493.38	-7534.02	0.00	
15724.00†	90.000	270.150	7270.00	7773.84	-1493.11	-7634.02	0.00	
15824.00†	90.000	270.150	7270.00	7872.55	-1492.85	-7734.02	0.00	
15924.00†	90.000	270.150	7270.00	7971.26	-1492.59	-7834.02	0.00	
16024.00†	90.000	270.150	7270.00	8069.98	-1492.33	-7934.01	0.00	
16124.00†	90.000	270.150	7270.00	8168.69	-1492.06	-8034.01	0.00	
16224.00†	90.000	270.150	7270.00	8267.41	-1491.80	-8134.01	0.00	
16324.00†	90.000	270.150	7270.00	8366.12	-1491.54	-8234.01	0.00	
16424.00†	90.000	270.150	7270.00	8464.83	-1491.28	-8334.01	0.00	
16524.00†	90.000	270.150	7270.00	8563.55	-1491.01	-8434.01	0.00	
16624.00†	90.000	270.150	7270.00	8662.26	-1490.75	-8534.01	0.00	
16724.00†	90.000	270.150	7270.00	8760.98	-1490.49	-8634.01	0.00	
16824.00†	90.000	270.150	7270.00	8859.69	-1490.23	-8734.01	0.00	
16924.00†	90.000	270.150	7270.00	8958.40	-1489.96	-8834.01	0.00	
17024.00†	90.000	270.150	7270.00	9057.12	-1489.70	-8934.01	0.00	
17124.00†	90.000	270.150	7270.00	9155.83	-1489.44	-9034.01	0.00	
17224.00†	90.000	270.150	7270.00	9254.55	-1489.18	-9134.01	0.00	
17324.00†	90.000	270.150	7270.00	9353.26	-1488.91	-9234.01	0.00	
17424.00†	90.000	270.150	7270.00	9451.97	-1488.65	-9334.01	0.00	



Planned Wellpath Report

WINDER #12 (REV-A.0) PWP

Page 8 of 10



REFERENCE WELLPATH IDENTIFICATION

Operator	EXTRACTION OIL & GAS	Slot	SLOT#12 WINDER #12(962'FNL & 684'FEL,SEC.09)
Area	COLORADO	Well	WINDER #12
Field	WELD COUNTY (NAD83/TRUE NORTH)	Wellbore	WINDER #12 PWB
Facility	SEC.09-T06N-R67W		

WELLPATH DATA (181 stations)

MD [ft]	Inclination [°]	Azimuth [°]	TVD [ft]	Vert Sect [ft]	North [ft]	East [ft]	DLS [°/100ft]	Comments
17437.76	90.000	270.150	7270.00 ²	9465.56	-1488.62	-9347.77	0.00	End of Tangent

HOLE & CASING SECTIONS - Ref Wellbore: WINDER #12 PWB Ref Wellpath: WINDER #12 (REV-A.0) PWP

String/Diameter	Start MD [ft]	End MD [ft]	Interval [ft]	Start TVD [ft]	End TVD [ft]	Start N/S [ft]	Start E/W [ft]	End N/S [ft]	End E/W [ft]
7in Casing Intermediate	24.00	7878.60	7854.60	24.00	7270.00	0.00	0.00	-1513.70	211.36



Planned Wellpath Report

WINDER #12 (REV-A.0) PWP

Page 9 of 10



REFERENCE WELLPATH IDENTIFICATION

Operator	EXTRACTION OIL & GAS	Slot	SLOT#12 WINDER #12(962'FNL & 684'FEL,SEC.09)
Area	COLORADO	Well	WINDER #12
Field	WELD COUNTY (NAD83/TRUE NORTH)	Wellbore	WINDER #12 PWB
Facility	SEC.09-T06N-R67W		

TARGETS

Name	MD [ft]	TVD [ft]	North [ft]	East [ft]	Grid East [US ft]	Grid North [US ft]	Latitude	Longitude	Shape
TWELL/WINDER 1/2 SECTION 08		56.00	-3048.19	-9582.23	3159703.97	1424776.07	40°29'52.771"N	104°55'32.678"W	polygon
TWELL/WINDER 1/2 SECTION 09		56.00	-3048.19	-9582.23	3159703.97	1424776.07	40°29'52.771"N	104°55'32.678"W	polygon
TWELL/WINDER SECTION 08		56.00	-3048.19	-9582.23	3159703.97	1424776.07	40°29'52.771"N	104°55'32.678"W	polygon
TWELL/WINDER SECTION 09		56.00	-3048.19	-9582.23	3159703.97	1424776.07	40°29'52.771"N	104°55'32.678"W	polygon
2) WINDER #12 BHL ON PLAT REV-1(2283'FNL & 460'FWL,SEC.08)	17437.76	7270.00	-1488.62	-9347.77	3159927.71	1426337.17	40°30'08.183"N	104°55'29.651"W	point
1) WINDER #12 LANDING POINT	7878.60	7270.00	-1513.70	211.36	3169486.45	1426377.70	40°30'07.952"N	104°53'25.908"W	point
TWELL/WINDER PAD CENTER SECTION HARDLINES (460'SETBACKS)		7418.00	-3048.19	-9582.23	3159703.97	1424776.07	40°29'52.771"N	104°55'32.678"W	polygon

SURVEY PROGRAM - Ref Wellbore: WINDER #12 PWB Ref Wellpath: WINDER #12 (REV-A.0) PWP

Start MD [ft]	End MD [ft]	Positional Uncertainty Model	Log Name/Comment	Wellbore
24.00	19000.00	NaviTrak (Standard)		WINDER #12 PWB



Planned Wellpath Report

WINDER #12 (REV-A.0) PWP

Page 10 of 10



REFERENCE WELLPATH IDENTIFICATION

Operator	EXTRACTION OIL & GAS	Slot	SLOT#12 WINDER #12(962'FNL & 684'FEL,SEC.09)
Area	COLORADO	Well	WINDER #12
Field	WELD COUNTY (NAD83/TRUE NORTH)	Wellbore	WINDER #12 PWB
Facility	SEC.09-T06N-R67W		

WELLPATH COMMENTS

MD [ft]	Inclination [°]	Azimuth [°]	TVD [ft]	Comment
7568.14	62.961	262.823	7198.00	NIO A
7776.02	81.046	267.894	7262.00	NIO B