

EXTRACTION OIL & GAS

Location: COLORADO Slot: SLOT#11 WINDER #11(936'FNL & 684'FEL,SEC.09)
Field: WELD COUNTY (NAD83/TRUE NORTH) Well: WINDER #11
Facility: SEC.09-T06N-R67W Wellbore: WINDER #11 PWB

Plot reference wellpath is WINDER #11 (REV-A.0) PWP

True vertical depths are referenced to RIG (RKB)	Grid System: NAD83 / Lambert Colorado SP, Northern Zone (501), US feet
Measured depths are referenced to RIG (RKB)	North Reference: True north
RIG (RKB) to Mean Sea Level: 4892 feet	Scale: True distance
Mean Sea Level to Mud line (At Slot: SLOT#11 WINDER #11(936'FNL & 684'FEL,SEC.09)): 0 feet	Depths are in feet
Coordinates are in feet referenced to Slot	Created by: painsetr on 4/8/2014

Location Information

Facility Name			Grid East (US ft)	Grid North (US ft)	Latitude	Longitude
SEC.09-T06N-R67W			3169265.228	1428175.850	40°30'25.736"N	104°53'28.612"W
Slot	Local N (ft)	Local E (ft)	Grid East (US ft)	Grid North (US ft)	Latitude	Longitude
SLOT#11 WINDER #11(936FNL & 684FEL,SEC.09)	-260.08	-2.16	3169264.851	1427915.767	40°30'23.166"N	104°53'28.640"W
RIG (RKB) to Mud line (At Slot: SLOT#11 WINDER #11(936FNL & 684FEL,SEC.09))					4892ft	
Mean Sea Level to Mud line (At Slot: SLOT#11 WINDER #11(936FNL & 684FEL,SEC.09))					0ft	
RIG (RKB) to Mean Sea Level					4892ft	

Targets

Name	MD (ft)	TVD (ft)	Local N (ft)	Local E (ft)	Grid East (US ft)	Grid North (US ft)	Latitude	Longitude
TWELL/WINDER 1/2 SECTION 08		56.00	-3074.10	-9582.54	3159703.97	1424776.07	40°29'52.771"N	104°55'32.678"W
TWELL/WINDER 1/2 SECTION 09		56.00	-3074.10	-9582.54	3159703.97	1424776.07	40°29'52.771"N	104°55'32.678"W
TWELL/WINDER SECTION 08		56.00	-3074.10	-9582.54	3159703.97	1424776.07	40°29'52.771"N	104°55'32.678"W
TWELL/WINDER SECTION 09		56.00	-3074.10	-9582.54	3159703.97	1424776.07	40°29'52.771"N	104°55'32.678"W
WINDER #11 BHL ON PLAT REV-1(1954'FNL & 460'FWL,SEC.08)	17377.00	7270.00	-1184.45	-9349.91	3159923.63	1426667.21	40°30'11.444"N	104°55'29.676"W
WINDER #11 LANDING POINT	7813.24	7270.00	-1209.54	213.83	3189486.97	1426707.77	40°30'11.214"N	104°53'25.872"W
TWELL/WINDER PAD CENTER SECTION HARDLINES(460'SETBACKS)		7418.00	-3074.10	-9582.54	3159703.97	1424776.07	40°29'52.771"N	104°55'32.678"W

Survey Program

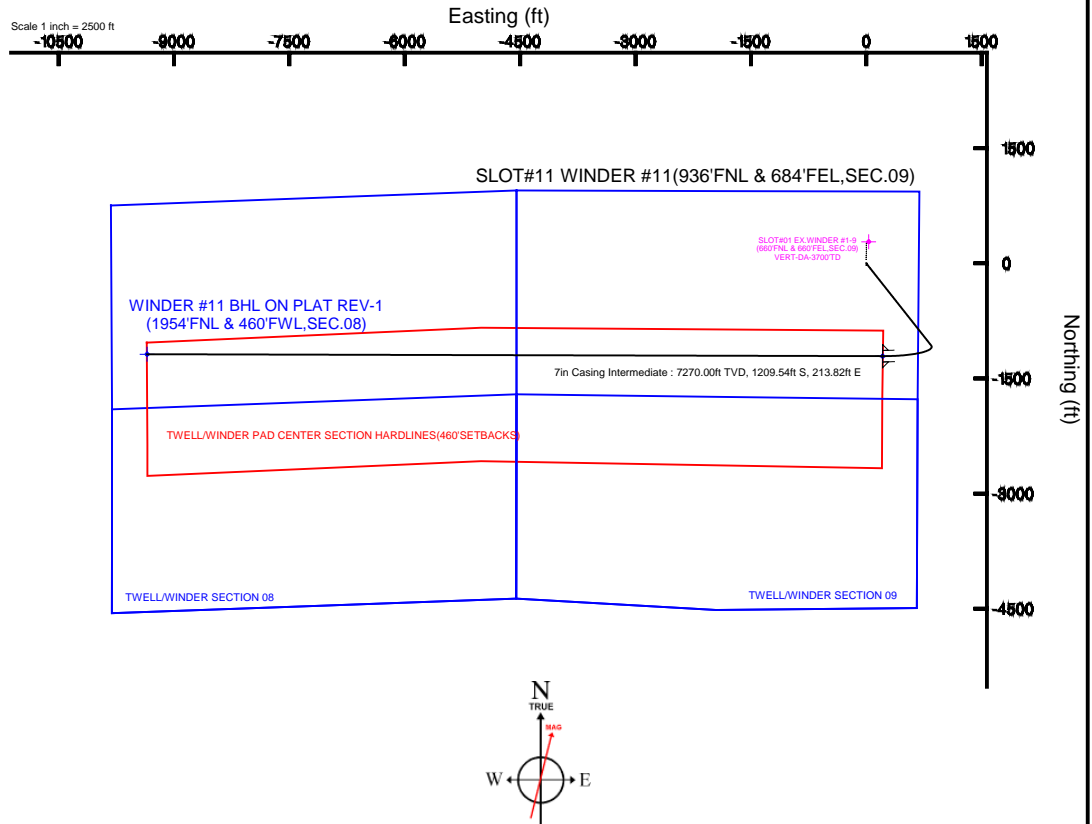
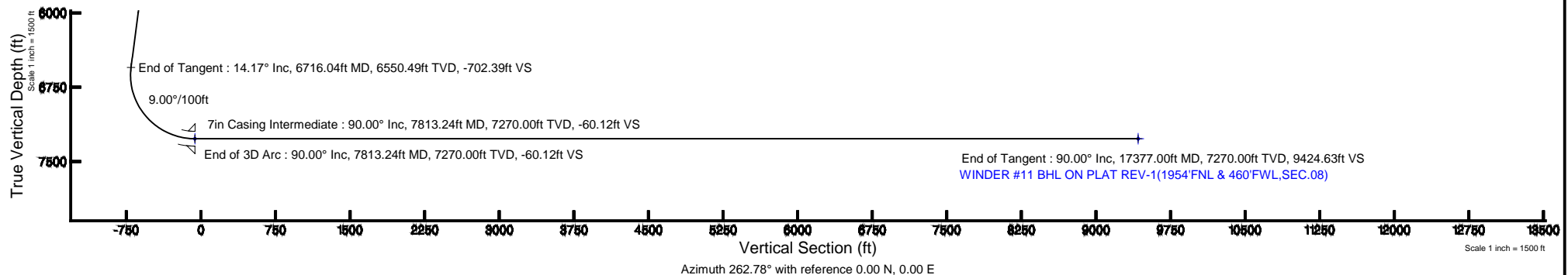
Start MD (ft)	End MD (ft)	Tool	Model	Log Name/Comment	Wellbore
24.00	19000.00	NaviTrak	NaviTrak (Standard)		WINDER #11 PWB

Well Profile Data

Design Comment	MD (ft)	Inc (°)	Az (°)	TVD (ft)	Local N (ft)	Local E (ft)	DLS (°/100ft)	VS (ft)
Tie On	24.00	0.000	141.725	24.00	0.00	0.00	0.00	0.00
End of Tangent	800.00	0.000	141.725	800.00	0.00	0.00	0.00	0.00
End of Build	1508.28	14.166	141.725	1501.09	-68.39	53.96	2.00	-44.94
End of Tangent	6716.04	14.166	141.725	6550.49	-1068.91	843.41	0.00	-702.39
End of 3D Arc	7813.24	90.000	270.150	7270.00	-1209.54	213.83	9.00	-60.12
End of Tangent	17377.00	90.000	270.150	7270.00	-1184.45	-9349.91	0.00	9424.63

Wellpath Comments

MD (ft)	X (ft)	Y (ft)	TVD (ft)	Inclination (°)	Azimuth (°)	VS (ft)	Comment
7504.53	510.61	-1196.08	7198.00	62.788	264.315	-356.25	NIO A
7711.23	315.40	-1208.22	7262.00	80.995	268.355	-161.05	NIO B





Planned Wellpath Report

WINDER #11 (REV-A.0) PWP

Page 1 of 9



REFERENCE WELLPATH IDENTIFICATION

Operator	EXTRACTION OIL & GAS	Slot	SLOT#11 WINDER #11(936'FNL & 684'FEL,SEC.09)
Area	COLORADO	Well	WINDER #11
Field	WELD COUNTY (NAD83/TRUE NORTH)	Wellbore	WINDER #11 PWB
Facility	SEC.09-T06N-R67W		

REPORT SETUP INFORMATION

Projection System	NAD83 / Lambert Colorado SP, Northern Zone (501), US feet	Software System	WellArchitect® 4.0.0
North Reference	True	User	Painsetr
Scale	0.999967	Report Generated	4/8/2014 at 1:09:53 PM
Convergence at slot	n/a	Database/Source file	WA_Denver/WINDER_#11_PWB.xml

WELLPATH LOCATION

	Local coordinates		Grid coordinates		Geographic coordinates	
	North[ft]	East[ft]	Easting[US ft]	Northing[US ft]	Latitude	Longitude
Slot Location	-260.08	-2.16	3169264.85	1427915.77	40°30'23.166"N	104°53'28.640"W
Facility Reference Pt			3169265.23	1428175.85	40°30'25.736"N	104°53'28.612"W
Field Reference Pt			3185481.27	1419166.81	40°28'55.560"N	104°49'59.556"W

WELLPATH DATUM

Calculation method	Minimum curvature	RIG (RKB) to Facility Vertical Datum	4892.00ft
Horizontal Reference Pt	Slot	RIG (RKB) to Mean Sea Level	4892.00ft
Vertical Reference Pt	RIG (RKB)	RIG (RKB) to Mud Line at Slot (SLOT#11 WINDER #11(936'FNL & 684'FEL,SEC.09))	4892.00ft
MD Reference Pt	RIG (RKB)	Section Origin	N 0.00, E 0.00 ft
Field Vertical Reference	Mean Sea Level	Section Azimuth	262.78°



Planned Wellpath Report

WINDER #11 (REV-A.0) PWP

Page 2 of 9



REFERENCE WELLPATH IDENTIFICATION

Operator	EXTRACTION OIL & GAS	Slot	SLOT#11 WINDER #11(936'FNL & 684'FEL,SEC.09)
Area	COLORADO	Well	WINDER #11
Field	WELD COUNTY (NAD83/TRUE NORTH)	Wellbore	WINDER #11 PWB
Facility	SEC.09-T06N-R67W		

WELLPATH DATA (180 stations) † = interpolated/extrapolated station

MD [ft]	Inclination [°]	Azimuth [°]	TVD [ft]	Vert Sect [ft]	North [ft]	East [ft]	DLS [°/100ft]	Comments
0.00†	0.000	141.725	0.00	0.00	0.00	0.00	0.00	
24.00	0.000	141.725	24.00	0.00	0.00	0.00	0.00	Tie On
124.00†	0.000	141.725	124.00	0.00	0.00	0.00	0.00	
224.00†	0.000	141.725	224.00	0.00	0.00	0.00	0.00	
324.00†	0.000	141.725	324.00	0.00	0.00	0.00	0.00	
424.00†	0.000	141.725	424.00	0.00	0.00	0.00	0.00	
524.00†	0.000	141.725	524.00	0.00	0.00	0.00	0.00	
624.00†	0.000	141.725	624.00	0.00	0.00	0.00	0.00	
724.00†	0.000	141.725	724.00	0.00	0.00	0.00	0.00	
800.00	0.000	141.725	800.00	0.00	0.00	0.00	0.00	End of Tangent
824.00†	0.480	141.725	824.00	-0.05	-0.08	0.06	2.00	
924.00†	2.480	141.725	923.96	-1.38	-2.11	1.66	2.00	
1024.00†	4.480	141.725	1023.77	-4.52	-6.87	5.42	2.00	
1124.00†	6.480	141.725	1123.31	-9.44	-14.37	11.34	2.00	
1224.00†	8.480	141.725	1222.45	-16.16	-24.59	19.40	2.00	
1324.00†	10.480	141.725	1321.08	-24.65	-37.52	29.60	2.00	
1424.00†	12.480	141.725	1419.08	-34.92	-53.14	41.93	2.00	
1508.28	14.166	141.725	1501.09	-44.94	-68.39	53.96	2.00	End of Build
1524.00†	14.166	141.725	1516.33	-46.92	-71.41	56.34	0.00	
1624.00†	14.166	141.725	1613.29	-59.55	-90.62	71.50	0.00	
1724.00†	14.166	141.725	1710.25	-72.17	-109.83	86.66	0.00	
1824.00†	14.166	141.725	1807.21	-84.79	-129.04	101.82	0.00	
1924.00†	14.166	141.725	1904.17	-97.42	-148.26	116.98	0.00	
2024.00†	14.166	141.725	2001.12	-110.04	-167.47	132.14	0.00	
2124.00†	14.166	141.725	2098.08	-122.67	-186.68	147.30	0.00	
2224.00†	14.166	141.725	2195.04	-135.29	-205.89	162.46	0.00	
2324.00†	14.166	141.725	2292.00	-147.92	-225.10	177.62	0.00	
2424.00†	14.166	141.725	2388.96	-160.54	-244.32	192.77	0.00	
2524.00†	14.166	141.725	2485.92	-173.17	-263.53	207.93	0.00	
2624.00†	14.166	141.725	2582.88	-185.79	-282.74	223.09	0.00	



Planned Wellpath Report

WINDER #11 (REV-A.0) PWP

Page 3 of 9



REFERENCE WELLPATH IDENTIFICATION

Operator	EXTRACTION OIL & GAS	Slot	SLOT#11 WINDER #11(936'FNL & 684'FEL,SEC.09)
Area	COLORADO	Well	WINDER #11
Field	WELD COUNTY (NAD83/TRUE NORTH)	Wellbore	WINDER #11 PWB
Facility	SEC.09-T06N-R67W		

WELLPATH DATA (180 stations) † = interpolated/extrapolated station

MD [ft]	Inclination [°]	Azimuth [°]	TVD [ft]	Vert Sect [ft]	North [ft]	East [ft]	DLS [°/100ft]	Comments
2724.00†	14.166	141.725	2679.84	-198.41	-301.95	238.25	0.00	
2824.00†	14.166	141.725	2776.80	-211.04	-321.17	253.41	0.00	
2924.00†	14.166	141.725	2873.76	-223.66	-340.38	268.57	0.00	
3024.00†	14.166	141.725	2970.72	-236.29	-359.59	283.73	0.00	
3124.00†	14.166	141.725	3067.68	-248.91	-378.80	298.89	0.00	
3224.00†	14.166	141.725	3164.64	-261.54	-398.02	314.05	0.00	
3324.00†	14.166	141.725	3261.59	-274.16	-417.23	329.21	0.00	
3424.00†	14.166	141.725	3358.55	-286.79	-436.44	344.37	0.00	
3524.00†	14.166	141.725	3455.51	-299.41	-455.65	359.52	0.00	
3624.00†	14.166	141.725	3552.47	-312.03	-474.86	374.68	0.00	
3724.00†	14.166	141.725	3649.43	-324.66	-494.08	389.84	0.00	
3824.00†	14.166	141.725	3746.39	-337.28	-513.29	405.00	0.00	
3924.00†	14.166	141.725	3843.35	-349.91	-532.50	420.16	0.00	
4024.00†	14.166	141.725	3940.31	-362.53	-551.71	435.32	0.00	
4124.00†	14.166	141.725	4037.27	-375.16	-570.93	450.48	0.00	
4224.00†	14.166	141.725	4134.23	-387.78	-590.14	465.64	0.00	
4324.00†	14.166	141.725	4231.19	-400.41	-609.35	480.80	0.00	
4424.00†	14.166	141.725	4328.15	-413.03	-628.56	495.96	0.00	
4524.00†	14.166	141.725	4425.10	-425.65	-647.77	511.12	0.00	
4624.00†	14.166	141.725	4522.06	-438.28	-666.99	526.28	0.00	
4724.00†	14.166	141.725	4619.02	-450.90	-686.20	541.43	0.00	
4824.00†	14.166	141.725	4715.98	-463.53	-705.41	556.59	0.00	
4924.00†	14.166	141.725	4812.94	-476.15	-724.62	571.75	0.00	
5024.00†	14.166	141.725	4909.90	-488.78	-743.84	586.91	0.00	
5124.00†	14.166	141.725	5006.86	-501.40	-763.05	602.07	0.00	
5224.00†	14.166	141.725	5103.82	-514.03	-782.26	617.23	0.00	
5324.00†	14.166	141.725	5200.78	-526.65	-801.47	632.39	0.00	
5424.00†	14.166	141.725	5297.74	-539.27	-820.68	647.55	0.00	
5524.00†	14.166	141.725	5394.70	-551.90	-839.90	662.71	0.00	
5624.00†	14.166	141.725	5491.66	-564.52	-859.11	677.87	0.00	



Planned Wellpath Report

WINDER #11 (REV-A.0) PWP

Page 4 of 9



REFERENCE WELLPATH IDENTIFICATION

Operator	EXTRACTION OIL & GAS	Slot	SLOT#11 WINDER #11(936'FNL & 684'FEL,SEC.09)
Area	COLORADO	Well	WINDER #11
Field	WELD COUNTY (NAD83/TRUE NORTH)	Wellbore	WINDER #11 PWB
Facility	SEC.09-T06N-R67W		

WELLPATH DATA (180 stations) † = interpolated/extrapolated station

MD [ft]	Inclination [°]	Azimuth [°]	TVD [ft]	Vert Sect [ft]	North [ft]	East [ft]	DLS [°/100ft]	Comments
5724.00†	14.166	141.725	5588.62	-577.15	-878.32	693.03	0.00	
5824.00†	14.166	141.725	5685.57	-589.77	-897.53	708.18	0.00	
5924.00†	14.166	141.725	5782.53	-602.40	-916.75	723.34	0.00	
6024.00†	14.166	141.725	5879.49	-615.02	-935.96	738.50	0.00	
6124.00†	14.166	141.725	5976.45	-627.64	-955.17	753.66	0.00	
6224.00†	14.166	141.725	6073.41	-640.27	-974.38	768.82	0.00	
6324.00†	14.166	141.725	6170.37	-652.89	-993.59	783.98	0.00	
6424.00†	14.166	141.725	6267.33	-665.52	-1012.81	799.14	0.00	
6524.00†	14.166	141.725	6364.29	-678.14	-1032.02	814.30	0.00	
6624.00†	14.166	141.725	6461.25	-690.77	-1051.23	829.46	0.00	
6716.04	14.166	141.725	6550.49	-702.39	-1068.91	843.41	0.00	End of Tangent
6724.00†	13.740	144.118	6558.22	-703.34	-1070.45	844.57	9.00	
6824.00†	11.227	185.131	6656.03	-706.96	-1089.80	850.67	9.00	
6924.00†	14.940	222.329	6753.58	-695.05	-1109.07	841.10	9.00	
7024.00†	21.916	240.711	6848.47	-667.89	-1127.77	816.09	9.00	
7124.00†	29.954	250.083	6938.37	-626.15	-1145.44	776.26	9.00	
7224.00†	38.391	255.699	7021.05	-570.87	-1161.64	722.59	9.00	
7324.00†	47.011	259.529	7094.48	-503.40	-1175.99	656.40	9.00	
7424.00†	55.728	262.406	7156.86	-425.41	-1188.12	579.32	9.00	
7524.00†	64.499	264.738	7206.64	-338.81	-1197.74	493.25	9.00	
7624.00†	73.302	266.750	7242.61	-245.74	-1204.61	400.30	9.00	
7724.00†	82.122	268.582	7263.87	-148.49	-1208.56	302.78	9.00	
7813.24	90.000	270.150	7270.00 ¹	-60.12	-1209.54	213.83	9.00	End of 3D Arc
7824.00†	90.000	270.150	7270.00	-49.45	-1209.51	203.06	0.00	
7924.00†	90.000	270.150	7270.00	49.73	-1209.25	103.06	0.00	
8024.00†	90.000	270.150	7270.00	148.90	-1208.98	3.07	0.00	
8124.00†	90.000	270.150	7270.00	248.07	-1208.72	-96.93	0.00	
8224.00†	90.000	270.150	7270.00	347.25	-1208.46	-196.93	0.00	
8324.00†	90.000	270.150	7270.00	446.42	-1208.20	-296.93	0.00	
8424.00†	90.000	270.150	7270.00	545.59	-1207.93	-396.93	0.00	



Planned Wellpath Report

WINDER #11 (REV-A.0) PWP

Page 5 of 9



REFERENCE WELLPATH IDENTIFICATION

Operator	EXTRACTION OIL & GAS	Slot	SLOT#11 WINDER #11(936'FNL & 684'FEL,SEC.09)
Area	COLORADO	Well	WINDER #11
Field	WELD COUNTY (NAD83/TRUE NORTH)	Wellbore	WINDER #11 PWB
Facility	SEC.09-T06N-R67W		

WELLPATH DATA (180 stations) † = interpolated/extrapolated station

MD [ft]	Inclination [°]	Azimuth [°]	TVD [ft]	Vert Sect [ft]	North [ft]	East [ft]	DLS [°/100ft]	Comments
8524.00†	90.000	270.150	7270.00	644.77	-1207.67	-496.93	0.00	
8624.00†	90.000	270.150	7270.00	743.94	-1207.41	-596.93	0.00	
8724.00†	90.000	270.150	7270.00	843.12	-1207.15	-696.93	0.00	
8824.00†	90.000	270.150	7270.00	942.29	-1206.89	-796.93	0.00	
8924.00†	90.000	270.150	7270.00	1041.46	-1206.62	-896.93	0.00	
9024.00†	90.000	270.150	7270.00	1140.64	-1206.36	-996.93	0.00	
9124.00†	90.000	270.150	7270.00	1239.81	-1206.10	-1096.93	0.00	
9224.00†	90.000	270.150	7270.00	1338.99	-1205.84	-1196.93	0.00	
9324.00†	90.000	270.150	7270.00	1438.16	-1205.57	-1296.93	0.00	
9424.00†	90.000	270.150	7270.00	1537.33	-1205.31	-1396.93	0.00	
9524.00†	90.000	270.150	7270.00	1636.51	-1205.05	-1496.93	0.00	
9624.00†	90.000	270.150	7270.00	1735.68	-1204.79	-1596.93	0.00	
9724.00†	90.000	270.150	7270.00	1834.85	-1204.52	-1696.93	0.00	
9824.00†	90.000	270.150	7270.00	1934.03	-1204.26	-1796.93	0.00	
9924.00†	90.000	270.150	7270.00	2033.20	-1204.00	-1896.93	0.00	
10024.00†	90.000	270.150	7270.00	2132.38	-1203.74	-1996.93	0.00	
10124.00†	90.000	270.150	7270.00	2231.55	-1203.48	-2096.93	0.00	
10224.00†	90.000	270.150	7270.00	2330.72	-1203.21	-2196.93	0.00	
10324.00†	90.000	270.150	7270.00	2429.90	-1202.95	-2296.93	0.00	
10424.00†	90.000	270.150	7270.00	2529.07	-1202.69	-2396.93	0.00	
10524.00†	90.000	270.150	7270.00	2628.24	-1202.43	-2496.93	0.00	
10624.00†	90.000	270.150	7270.00	2727.42	-1202.16	-2596.93	0.00	
10724.00†	90.000	270.150	7270.00	2826.59	-1201.90	-2696.93	0.00	
10824.00†	90.000	270.150	7270.00	2925.77	-1201.64	-2796.93	0.00	
10924.00†	90.000	270.150	7270.00	3024.94	-1201.38	-2896.92	0.00	
11024.00†	90.000	270.150	7270.00	3124.11	-1201.11	-2996.92	0.00	
11124.00†	90.000	270.150	7270.00	3223.29	-1200.85	-3096.92	0.00	
11224.00†	90.000	270.150	7270.00	3322.46	-1200.59	-3196.92	0.00	
11324.00†	90.000	270.150	7270.00	3421.64	-1200.33	-3296.92	0.00	
11424.00†	90.000	270.150	7270.00	3520.81	-1200.07	-3396.92	0.00	



Planned Wellpath Report

WINDER #11 (REV-A.0) PWP

Page 6 of 9



REFERENCE WELLPATH IDENTIFICATION

Operator	EXTRACTION OIL & GAS	Slot	SLOT#11 WINDER #11(936'FNL & 684'FEL,SEC.09)
Area	COLORADO	Well	WINDER #11
Field	WELD COUNTY (NAD83/TRUE NORTH)	Wellbore	WINDER #11 PWB
Facility	SEC.09-T06N-R67W		

WELLPATH DATA (180 stations) † = interpolated/extrapolated station

MD [ft]	Inclination [°]	Azimuth [°]	TVD [ft]	Vert Sect [ft]	North [ft]	East [ft]	DLS [°/100ft]	Comments
11524.00†	90.000	270.150	7270.00	3619.98	-1199.80	-3496.92	0.00	
11624.00†	90.000	270.150	7270.00	3719.16	-1199.54	-3596.92	0.00	
11724.00†	90.000	270.150	7270.00	3818.33	-1199.28	-3696.92	0.00	
11824.00†	90.000	270.150	7270.00	3917.50	-1199.02	-3796.92	0.00	
11924.00†	90.000	270.150	7270.00	4016.68	-1198.75	-3896.92	0.00	
12024.00†	90.000	270.150	7270.00	4115.85	-1198.49	-3996.92	0.00	
12124.00†	90.000	270.150	7270.00	4215.03	-1198.23	-4096.92	0.00	
12224.00†	90.000	270.150	7270.00	4314.20	-1197.97	-4196.92	0.00	
12324.00†	90.000	270.150	7270.00	4413.37	-1197.70	-4296.92	0.00	
12424.00†	90.000	270.150	7270.00	4512.55	-1197.44	-4396.92	0.00	
12524.00†	90.000	270.150	7270.00	4611.72	-1197.18	-4496.92	0.00	
12624.00†	90.000	270.150	7270.00	4710.90	-1196.92	-4596.92	0.00	
12724.00†	90.000	270.150	7270.00	4810.07	-1196.66	-4696.92	0.00	
12824.00†	90.000	270.150	7270.00	4909.24	-1196.39	-4796.92	0.00	
12924.00†	90.000	270.150	7270.00	5008.42	-1196.13	-4896.92	0.00	
13024.00†	90.000	270.150	7270.00	5107.59	-1195.87	-4996.92	0.00	
13124.00†	90.000	270.150	7270.00	5206.76	-1195.61	-5096.92	0.00	
13224.00†	90.000	270.150	7270.00	5305.94	-1195.34	-5196.92	0.00	
13324.00†	90.000	270.150	7270.00	5405.11	-1195.08	-5296.92	0.00	
13424.00†	90.000	270.150	7270.00	5504.29	-1194.82	-5396.92	0.00	
13524.00†	90.000	270.150	7270.00	5603.46	-1194.56	-5496.92	0.00	
13624.00†	90.000	270.150	7270.00	5702.63	-1194.29	-5596.92	0.00	
13724.00†	90.000	270.150	7270.00	5801.81	-1194.03	-5696.92	0.00	
13824.00†	90.000	270.150	7270.00	5900.98	-1193.77	-5796.91	0.00	
13924.00†	90.000	270.150	7270.00	6000.16	-1193.51	-5896.91	0.00	
14024.00†	90.000	270.150	7270.00	6099.33	-1193.24	-5996.91	0.00	
14124.00†	90.000	270.150	7270.00	6198.50	-1192.98	-6096.91	0.00	
14224.00†	90.000	270.150	7270.00	6297.68	-1192.72	-6196.91	0.00	
14324.00†	90.000	270.150	7270.00	6396.85	-1192.46	-6296.91	0.00	
14424.00†	90.000	270.150	7270.00	6496.02	-1192.20	-6396.91	0.00	



Planned Wellpath Report

WINDER #11 (REV-A.0) PWP

Page 7 of 9



REFERENCE WELLPATH IDENTIFICATION

Operator	EXTRACTION OIL & GAS	Slot	SLOT#11 WINDER #11(936'FNL & 684'FEL,SEC.09)
Area	COLORADO	Well	WINDER #11
Field	WELD COUNTY (NAD83/TRUE NORTH)	Wellbore	WINDER #11 PWB
Facility	SEC.09-T06N-R67W		

WELLPATH DATA (180 stations) † = interpolated/extrapolated station

MD [ft]	Inclination [°]	Azimuth [°]	TVD [ft]	Vert Sect [ft]	North [ft]	East [ft]	DLS [°/100ft]	Comments
14524.00†	90.000	270.150	7270.00	6595.20	-1191.93	-6496.91	0.00	
14624.00†	90.000	270.150	7270.00	6694.37	-1191.67	-6596.91	0.00	
14724.00†	90.000	270.150	7270.00	6793.55	-1191.41	-6696.91	0.00	
14824.00†	90.000	270.150	7270.00	6892.72	-1191.15	-6796.91	0.00	
14924.00†	90.000	270.150	7270.00	6991.89	-1190.88	-6896.91	0.00	
15024.00†	90.000	270.150	7270.00	7091.07	-1190.62	-6996.91	0.00	
15124.00†	90.000	270.150	7270.00	7190.24	-1190.36	-7096.91	0.00	
15224.00†	90.000	270.150	7270.00	7289.41	-1190.10	-7196.91	0.00	
15324.00†	90.000	270.150	7270.00	7388.59	-1189.83	-7296.91	0.00	
15424.00†	90.000	270.150	7270.00	7487.76	-1189.57	-7396.91	0.00	
15524.00†	90.000	270.150	7270.00	7586.94	-1189.31	-7496.91	0.00	
15624.00†	90.000	270.150	7270.00	7686.11	-1189.05	-7596.91	0.00	
15724.00†	90.000	270.150	7270.00	7785.28	-1188.79	-7696.91	0.00	
15824.00†	90.000	270.150	7270.00	7884.46	-1188.52	-7796.91	0.00	
15924.00†	90.000	270.150	7270.00	7983.63	-1188.26	-7896.91	0.00	
16024.00†	90.000	270.150	7270.00	8082.81	-1188.00	-7996.91	0.00	
16124.00†	90.000	270.150	7270.00	8181.98	-1187.74	-8096.91	0.00	
16224.00†	90.000	270.150	7270.00	8281.15	-1187.47	-8196.91	0.00	
16324.00†	90.000	270.150	7270.00	8380.33	-1187.21	-8296.91	0.00	
16424.00†	90.000	270.150	7270.00	8479.50	-1186.95	-8396.91	0.00	
16524.00†	90.000	270.150	7270.00	8578.67	-1186.69	-8496.91	0.00	
16624.00†	90.000	270.150	7270.00	8677.85	-1186.42	-8596.91	0.00	
16724.00†	90.000	270.150	7270.00	8777.02	-1186.16	-8696.90	0.00	
16824.00†	90.000	270.150	7270.00	8876.20	-1185.90	-8796.90	0.00	
16924.00†	90.000	270.150	7270.00	8975.37	-1185.64	-8896.90	0.00	
17024.00†	90.000	270.150	7270.00	9074.54	-1185.38	-8996.90	0.00	
17124.00†	90.000	270.150	7270.00	9173.72	-1185.11	-9096.90	0.00	
17224.00†	90.000	270.150	7270.00	9272.89	-1184.85	-9196.90	0.00	
17324.00†	90.000	270.150	7270.00	9372.07	-1184.59	-9296.90	0.00	
17377.00	90.000	270.150	7270.00 ²	9424.63	-1184.45	-9349.91	0.00	End of Tangent



Planned Wellpath Report

WINDER #11 (REV-A.0) PWP

Page 8 of 9



REFERENCE WELLPATH IDENTIFICATION

Operator	EXTRACTION OIL & GAS	Slot	SLOT#11 WINDER #11(936'FNL & 684'FEL,SEC.09)
Area	COLORADO	Well	WINDER #11
Field	WELD COUNTY (NAD83/TRUE NORTH)	Wellbore	WINDER #11 PWB
Facility	SEC.09-T06N-R67W		

HOLE & CASING SECTIONS - Ref Wellbore: WINDER #11 PWB Ref Wellpath: WINDER #11 (REV-A.0) PWP

String/Diameter	Start MD [ft]	End MD [ft]	Interval [ft]	Start TVD [ft]	End TVD [ft]	Start N/S [ft]	Start E/W [ft]	End N/S [ft]	End E/W [ft]
7in Casing Intermediate	24.00	7813.24	7789.24	24.00	7270.00	0.00	0.00	-1209.54	213.82

TARGETS

Name	MD [ft]	TVD [ft]	North [ft]	East [ft]	Grid East [US ft]	Grid North [US ft]	Latitude	Longitude	Shape
TWELL/WINDER 1/2 SECTION 08		56.00	-3074.10	-9582.54	3159703.97	1424776.07	40°29'52.771"N	104°55'32.678"W	polygon
TWELL/WINDER 1/2 SECTION 09		56.00	-3074.10	-9582.54	3159703.97	1424776.07	40°29'52.771"N	104°55'32.678"W	polygon
TWELL/WINDER SECTION 08		56.00	-3074.10	-9582.54	3159703.97	1424776.07	40°29'52.771"N	104°55'32.678"W	polygon
TWELL/WINDER SECTION 09		56.00	-3074.10	-9582.54	3159703.97	1424776.07	40°29'52.771"N	104°55'32.678"W	polygon
2) WINDER #11 BHL ON PLAT REV-1(1954'FNL & 460'FWL,SEC.08)	17377.00	7270.00	-1184.45	-9349.91	3159923.63	1426667.21	40°30'11.444"N	104°55'29.676"W	point
1) WINDER #11 LANDING POINT	7813.24	7270.00	-1209.54	213.83	3169486.97	1426707.77	40°30'11.214"N	104°53'25.872"W	point
TWELL/WINDER PAD CENTER SECTION HARDLINES (460'SETBACKS)		7418.00	-3074.10	-9582.54	3159703.97	1424776.07	40°29'52.771"N	104°55'32.678"W	polygon

SURVEY PROGRAM - Ref Wellbore: WINDER #11 PWB Ref Wellpath: WINDER #11 (REV-A.0) PWP

Start MD [ft]	End MD [ft]	Positional Uncertainty Model	Log Name/Comment	Wellbore
24.00	19000.00	NaviTrak (Standard)		WINDER #11 PWB



Planned Wellpath Report

WINDER #11 (REV-A.0) PWP

Page 9 of 9



REFERENCE WELLPATH IDENTIFICATION

Operator	EXTRACTION OIL & GAS	Slot	SLOT#11 WINDER #11(936'FNL & 684'FEL,SEC.09)
Area	COLORADO	Well	WINDER #11
Field	WELD COUNTY (NAD83/TRUE NORTH)	Wellbore	WINDER #11 PWB
Facility	SEC.09-T06N-R67W		

WELLPATH COMMENTS

MD [ft]	Inclination [°]	Azimuth [°]	TVD [ft]	Comment
7504.53	62.788	264.315	7198.00	NIO A
7711.23	80.995	268.355	7262.00	NIO B