

# EXTRACTION OIL & GAS

Location: COLORADO Slot: SLOT#10 WINDER #10(910'FNL & 684'FEL,SEC.09)  
Field: WELD COUNTY (NAD83/TRUE NORTH) Well: WINDER #10  
Facility: SEC.09-T06N-R67W Wellbore: WINDER #10 PWB

Plot reference wellpath is WINDER #10 (REV-A.0) PWP

True vertical depths are referenced to RIG (RKB)	Grid System: NAD83 / Lambert Colorado SP, Northern Zone (501), US feet
Measured depths are referenced to RIG (RKB)	North Reference: True north
RIG (RKB) to Mean Sea Level: 4892 feet	Scale: True distance
Mean Sea Level to Mud line (At Slot: SLOT#10 WINDER #10(910'FNL & 684'FEL,SEC.09)): 0 feet	Depths are in feet
Coordinates are in feet referenced to Slot	Created by: painsetr on 4/8/2014

## Location Information

Facility Name			Grid East (US ft)	Grid North (US ft)	Latitude	Longitude
SEC.09-T06N-R67W			3169265.228	1428175.850	40°30'25.736"N	104°53'28.612"W
Slot	Local N (ft)	Local E (ft)	Grid East (US ft)	Grid North (US ft)	Latitude	Longitude
SLOT#10 WINDER #10(910'FNL & 684'FEL,SEC.09)	-234.18	-1.93	3169264.905	1427941.675	40°30'23.422"N	104°53'28.637"W
R/G (RKB) to Mud line (At Slot: SLOT#10 WINDER #10(910'FNL & 684'FEL,SEC.09))					4892ft	
Mean Sea Level to Mud line (At Slot: SLOT#10 WINDER #10(910'FNL & 684'FEL,SEC.09))					0ft	
R/G (RKB) to Mean Sea Level					4892ft	

## Targets

Name	MD (ft)	TVD (ft)	Local N (ft)	Local E (ft)	Grid East (US ft)	Grid North (US ft)	Latitude	Longitude
TWELL/WINDER 1/2 SECTION 08		56.00	-3100.01	-9582.77	3159703.97	1424776.07	40°29'52.771"N	104°55'32.678"W
TWELL/WINDER 1/2 SECTION 09		56.00	-3100.01	-9582.77	3159703.97	1424776.07	40°29'52.771"N	104°55'32.678"W
TWELL/WINDER SECTION 08		56.00	-3100.01	-9582.77	3159703.97	1424776.07	40°29'52.771"N	104°55'32.678"W
TWELL/WINDER SECTION 09		56.00	-3100.01	-9582.77	3159703.97	1424776.07	40°29'52.771"N	104°55'32.678"W
WINDER #10 BHL ON PLAT REV-1(1789'FNL & 460'FWL,SEC.08)	17494.44	7414.00	-1045.32	-9350.91	3159921.72	1426832.23	40°30'13.075"N	104°55'29.687"W
WINDER #10 LANDING POINT	7928.52	7414.00	-1070.41	214.98	3169487.22	1426872.81	40°30'12.845"N	104°53'25.854"W
WINDER PAD NORTH 1/2 HARDLINES(460' SETBACKS)	7446.00	-3100.01	-9582.77	3159703.97	1424776.07	40°29'52.771"N	104°55'32.678"W	

## Survey Program

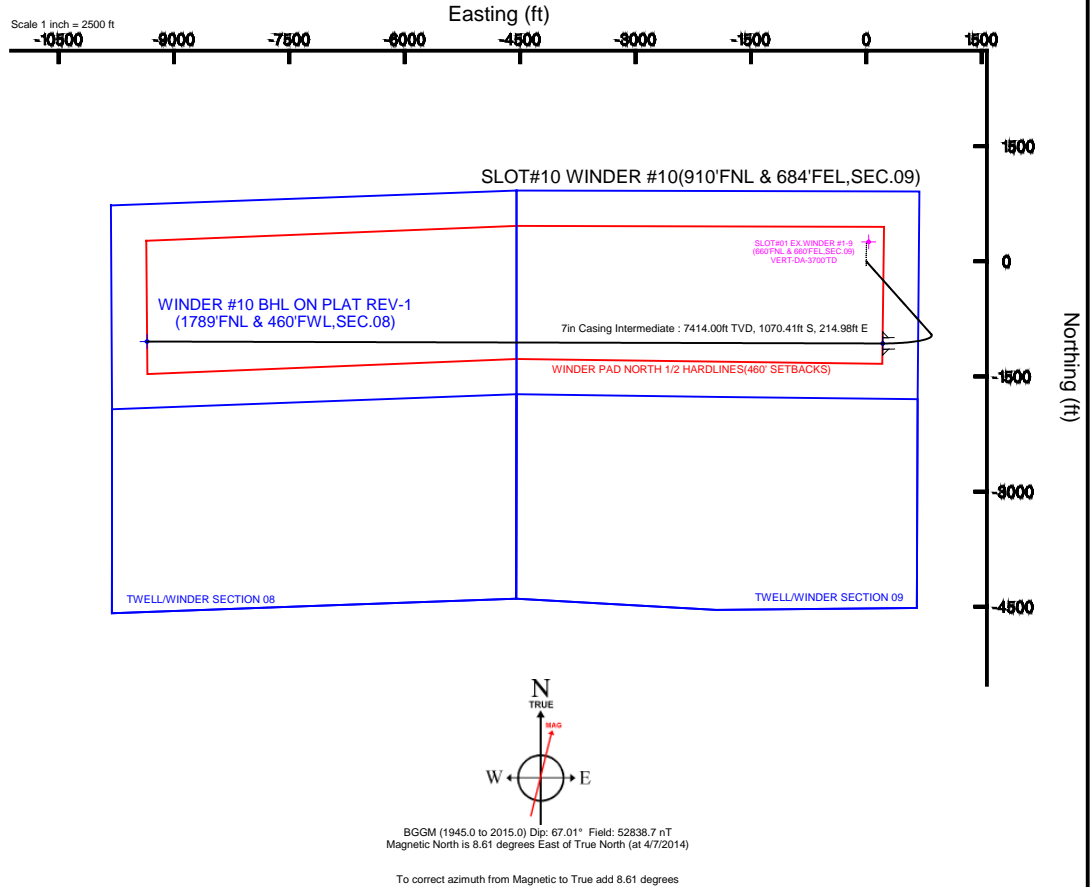
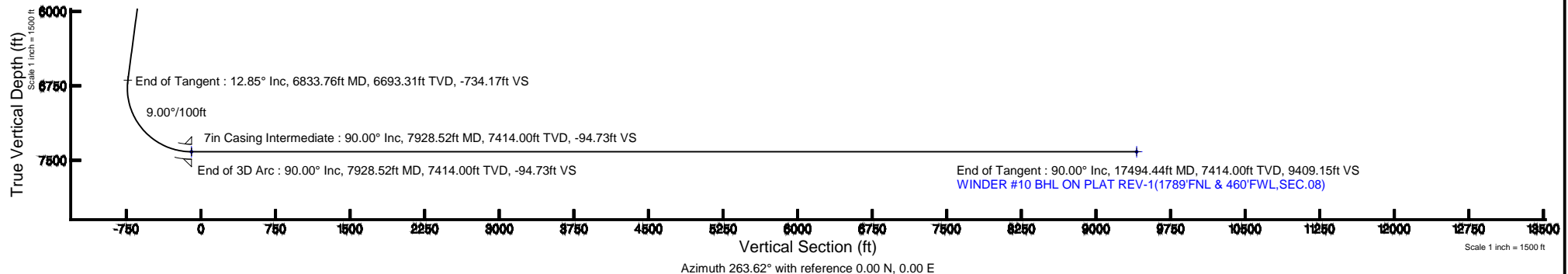
Start MD (ft)	End MD (ft)	Tool	Model	Log Name/Comment	Wellbore
24.00	19000.00	NaviTrak	NaviTrak (Standard)		WINDER #10 PWB

## Well Profile Data

Design Comment	MD (ft)	Inc (°)	Az (°)	TVD (ft)	Local N (ft)	Local E (ft)	DLS (°/100ft)	VS (ft)
Tie On	24.00	0.000	138.337	24.00	0.00	0.00	0.00	0.00
End of Tangent	800.00	0.000	138.337	800.00	0.00	0.00	0.00	0.00
End of Build	1442.62	12.852	138.337	1437.24	-53.62	47.71	2.00	-41.46
End of Tangent	6833.76	12.852	138.337	6693.31	-949.51	844.88	0.00	-734.17
End of 3D Arc	7928.52	90.000	270.150	7414.00	-1070.41	214.98	9.00	-94.73
End of Tangent	17494.44	90.000	270.150	7414.00	-1045.32	-9350.91	0.00	9409.15

## Wellpath Comments

MD (ft)	X (ft)	Y (ft)	TVD (ft)	Inclination (°)	Azimuth (°)	VS (ft)	Comment
7383.89	695.66	-1034.94	7198.00	41.908	259.228	-576.38	NIO A
7475.98	630.43	-1045.65	7262.00	49.966	261.937	-510.36	NIO B
7571.75	553.41	-1054.97	7318.00	58.398	264.145	-432.78	NIO C
7705.85	433.15	-1064.52	7376.00	70.255	266.651	-312.21	FORT HAYS
7775.68	366.36	-1067.74	7396.00	76.443	267.800	-245.47	CODELL





# Planned Wellpath Report

WINDER #10 (REV-A.0) PWP

Page 1 of 10



## REFERENCE WELLPATH IDENTIFICATION

Operator	EXTRACTION OIL & GAS	Slot	SLOT#10 WINDER #10(910'FNL & 684'FEL,SEC.09)
Area	COLORADO	Well	WINDER #10
Field	WELD COUNTY (NAD83/TRUE NORTH)	Wellbore	WINDER #10 PWB
Facility	SEC.09-T06N-R67W		

## REPORT SETUP INFORMATION

Projection System	NAD83 / Lambert Colorado SP, Northern Zone (501), US feet	Software System	WellArchitect® 4.0.0
North Reference	True	User	Painsetr
Scale	0.999967	Report Generated	4/8/2014 at 1:05:31 PM
Convergence at slot	n/a	Database/Source file	WA_Denver/WINDER_#10_PWB.xml

## WELLPATH LOCATION

	Local coordinates		Grid coordinates		Geographic coordinates	
	North[ft]	East[ft]	Easting[US ft]	Northing[US ft]	Latitude	Longitude
Slot Location	-234.18	-1.93	3169264.91	1427941.68	40°30'23.422"N	104°53'28.637"W
Facility Reference Pt			3169265.23	1428175.85	40°30'25.736"N	104°53'28.612"W
Field Reference Pt			3185481.27	1419166.81	40°28'55.560"N	104°49'59.556"W

## WELLPATH DATUM

Calculation method	Minimum curvature	RIG (RKB) to Facility Vertical Datum	4892.00ft
Horizontal Reference Pt	Slot	RIG (RKB) to Mean Sea Level	4892.00ft
Vertical Reference Pt	RIG (RKB)	RIG (RKB) to Mud Line at Slot (SLOT#10 WINDER #10(910'FNL & 684'FEL,SEC.09))	4892.00ft
MD Reference Pt	RIG (RKB)	Section Origin	N 0.00, E 0.00 ft
Field Vertical Reference	Mean Sea Level	Section Azimuth	263.62°



# Planned Wellpath Report

WINDER #10 (REV-A.0) PWP

Page 2 of 10



## REFERENCE WELLPATH IDENTIFICATION

Operator	EXTRACTION OIL & GAS	Slot	SLOT#10 WINDER #10(910'FNL & 684'FEL,SEC.09)
Area	COLORADO	Well	WINDER #10
Field	WELD COUNTY (NAD83/TRUE NORTH)	Wellbore	WINDER #10 PWB
Facility	SEC.09-T06N-R67W		

## WELLPATH DATA (181 stations) † = interpolated/extrapolated station

MD [ft]	Inclination [°]	Azimuth [°]	TVD [ft]	Vert Sect [ft]	North [ft]	East [ft]	DLS [°/100ft]	Comments
0.00†	0.000	138.337	0.00	0.00	0.00	0.00	0.00	
24.00	0.000	138.337	24.00	0.00	0.00	0.00	0.00	Tie On
124.00†	0.000	138.337	124.00	0.00	0.00	0.00	0.00	
224.00†	0.000	138.337	224.00	0.00	0.00	0.00	0.00	
324.00†	0.000	138.337	324.00	0.00	0.00	0.00	0.00	
424.00†	0.000	138.337	424.00	0.00	0.00	0.00	0.00	
524.00†	0.000	138.337	524.00	0.00	0.00	0.00	0.00	
624.00†	0.000	138.337	624.00	0.00	0.00	0.00	0.00	
724.00†	0.000	138.337	724.00	0.00	0.00	0.00	0.00	
800.00	0.000	138.337	800.00	0.00	0.00	0.00	0.00	End of Tangent
824.00†	0.480	138.337	824.00	-0.06	-0.08	0.07	2.00	
924.00†	2.480	138.337	923.96	-1.55	-2.00	1.78	2.00	
1024.00†	4.480	138.337	1023.77	-5.06	-6.54	5.82	2.00	
1124.00†	6.480	138.337	1123.31	-10.57	-13.67	12.17	2.00	
1224.00†	8.480	138.337	1222.45	-18.09	-23.40	20.82	2.00	
1324.00†	10.480	138.337	1321.08	-27.60	-35.70	31.77	2.00	
1424.00†	12.480	138.337	1419.08	-39.10	-50.57	45.00	2.00	
1442.62	12.852	138.337	1437.24	-41.46	-53.62	47.71	2.00	End of Build
1524.00†	12.852	138.337	1516.59	-51.92	-67.14	59.74	0.00	
1624.00†	12.852	138.337	1614.08	-64.76	-83.76	74.53	0.00	
1724.00†	12.852	138.337	1711.57	-77.61	-100.38	89.32	0.00	
1824.00†	12.852	138.337	1809.07	-90.46	-117.00	104.10	0.00	
1924.00†	12.852	138.337	1906.56	-103.31	-133.61	118.89	0.00	
2024.00†	12.852	138.337	2004.06	-116.16	-150.23	133.68	0.00	
2124.00†	12.852	138.337	2101.55	-129.01	-166.85	148.46	0.00	
2224.00†	12.852	138.337	2199.05	-141.86	-183.47	163.25	0.00	
2324.00†	12.852	138.337	2296.54	-154.71	-200.09	178.04	0.00	
2424.00†	12.852	138.337	2394.04	-167.56	-216.70	192.82	0.00	
2524.00†	12.852	138.337	2491.53	-180.41	-233.32	207.61	0.00	
2624.00†	12.852	138.337	2589.03	-193.25	-249.94	222.40	0.00	



# Planned Wellpath Report

WINDER #10 (REV-A.0) PWP

Page 3 of 10



## REFERENCE WELLPATH IDENTIFICATION

Operator	EXTRACTION OIL & GAS	Slot	SLOT#10 WINDER #10(910'FNL & 684'FEL,SEC.09)
Area	COLORADO	Well	WINDER #10
Field	WELD COUNTY (NAD83/TRUE NORTH)	Wellbore	WINDER #10 PWB
Facility	SEC.09-T06N-R67W		

## WELLPATH DATA (181 stations) † = interpolated/extrapolated station

MD [ft]	Inclination [°]	Azimuth [°]	TVD [ft]	Vert Sect [ft]	North [ft]	East [ft]	DLS [°/100ft]	Comments
2724.00†	12.852	138.337	2686.52	-206.10	-266.56	237.18	0.00	
2824.00†	12.852	138.337	2784.02	-218.95	-283.17	251.97	0.00	
2924.00†	12.852	138.337	2881.51	-231.80	-299.79	266.76	0.00	
3024.00†	12.852	138.337	2979.00	-244.65	-316.41	281.55	0.00	
3124.00†	12.852	138.337	3076.50	-257.50	-333.03	296.33	0.00	
3224.00†	12.852	138.337	3173.99	-270.35	-349.65	311.12	0.00	
3324.00†	12.852	138.337	3271.49	-283.20	-366.26	325.91	0.00	
3424.00†	12.852	138.337	3368.98	-296.05	-382.88	340.69	0.00	
3524.00†	12.852	138.337	3466.48	-308.90	-399.50	355.48	0.00	
3624.00†	12.852	138.337	3563.97	-321.74	-416.12	370.27	0.00	
3724.00†	12.852	138.337	3661.47	-334.59	-432.73	385.05	0.00	
3824.00†	12.852	138.337	3758.96	-347.44	-449.35	399.84	0.00	
3924.00†	12.852	138.337	3856.46	-360.29	-465.97	414.63	0.00	
4024.00†	12.852	138.337	3953.95	-373.14	-482.59	429.41	0.00	
4124.00†	12.852	138.337	4051.45	-385.99	-499.21	444.20	0.00	
4224.00†	12.852	138.337	4148.94	-398.84	-515.82	458.99	0.00	
4324.00†	12.852	138.337	4246.44	-411.69	-532.44	473.77	0.00	
4424.00†	12.852	138.337	4343.93	-424.54	-549.06	488.56	0.00	
4524.00†	12.852	138.337	4441.42	-437.39	-565.68	503.35	0.00	
4624.00†	12.852	138.337	4538.92	-450.23	-582.29	518.13	0.00	
4724.00†	12.852	138.337	4636.41	-463.08	-598.91	532.92	0.00	
4824.00†	12.852	138.337	4733.91	-475.93	-615.53	547.71	0.00	
4924.00†	12.852	138.337	4831.40	-488.78	-632.15	562.49	0.00	
5024.00†	12.852	138.337	4928.90	-501.63	-648.77	577.28	0.00	
5124.00†	12.852	138.337	5026.39	-514.48	-665.38	592.07	0.00	
5224.00†	12.852	138.337	5123.89	-527.33	-682.00	606.85	0.00	
5324.00†	12.852	138.337	5221.38	-540.18	-698.62	621.64	0.00	
5424.00†	12.852	138.337	5318.88	-553.03	-715.24	636.43	0.00	
5524.00†	12.852	138.337	5416.37	-565.87	-731.85	651.21	0.00	
5624.00†	12.852	138.337	5513.87	-578.72	-748.47	666.00	0.00	



# Planned Wellpath Report

WINDER #10 (REV-A.0) PWP

Page 4 of 10



## REFERENCE WELLPATH IDENTIFICATION

Operator	EXTRACTION OIL & GAS	Slot	SLOT#10 WINDER #10(910'FNL & 684'FEL,SEC.09)
Area	COLORADO	Well	WINDER #10
Field	WELD COUNTY (NAD83/TRUE NORTH)	Wellbore	WINDER #10 PWB
Facility	SEC.09-T06N-R67W		

## WELLPATH DATA (181 stations) † = interpolated/extrapolated station

MD [ft]	Inclination [°]	Azimuth [°]	TVD [ft]	Vert Sect [ft]	North [ft]	East [ft]	DLS [°/100ft]	Comments
5724.00†	12.852	138.337	5611.36	-591.57	-765.09	680.79	0.00	
5824.00†	12.852	138.337	5708.85	-604.42	-781.71	695.57	0.00	
5924.00†	12.852	138.337	5806.35	-617.27	-798.33	710.36	0.00	
6024.00†	12.852	138.337	5903.84	-630.12	-814.94	725.15	0.00	
6124.00†	12.852	138.337	6001.34	-642.97	-831.56	739.93	0.00	
6224.00†	12.852	138.337	6098.83	-655.82	-848.18	754.72	0.00	
6324.00†	12.852	138.337	6196.33	-668.67	-864.80	769.51	0.00	
6424.00†	12.852	138.337	6293.82	-681.52	-881.41	784.29	0.00	
6524.00†	12.852	138.337	6391.32	-694.36	-898.03	799.08	0.00	
6624.00†	12.852	138.337	6488.81	-707.21	-914.65	813.87	0.00	
6724.00†	12.852	138.337	6586.31	-720.06	-931.27	828.65	0.00	
6824.00†	12.852	138.337	6683.80	-732.91	-947.89	843.44	0.00	
6833.76	12.852	138.337	6693.31	-734.17	-949.51	844.88	0.00	End of Tangent
6924.00†	9.659	177.726	6781.93	-739.43	-964.60	851.87	9.00	
7024.00†	12.895	222.182	6880.17	-730.45	-981.28	844.69	9.00	
7124.00†	19.993	242.285	6976.09	-706.11	-997.53	822.02	9.00	
7224.00†	28.170	251.636	7067.34	-667.01	-1012.95	784.40	9.00	
7324.00†	36.711	256.968	7151.68	-614.13	-1027.16	732.78	9.00	
7424.00†	45.410	260.500	7227.02	-548.75	-1039.80	668.41	9.00	
7524.00†	54.189	263.103	7291.51	-472.49	-1050.57	592.88	9.00	
7624.00†	63.013	265.182	7343.56	-387.23	-1059.20	508.05	9.00	
7724.00†	71.863	266.957	7381.89	-295.07	-1065.47	416.02	9.00	
7824.00†	80.728	268.559	7405.56	-198.27	-1069.25	319.04	9.00	
7924.00†	89.599	270.082	7413.98	-99.22	-1070.42	219.50	9.00	
7928.52	90.000	270.150	7414.00 <sup>1</sup>	-94.73	-1070.41	214.98	9.00	End of 3D Arc
8024.00†	90.000	270.150	7414.00	0.13	-1070.16	119.50	0.00	
8124.00†	90.000	270.150	7414.00	99.48	-1069.90	19.50	0.00	
8224.00†	90.000	270.150	7414.00	198.83	-1069.63	-80.50	0.00	
8324.00†	90.000	270.150	7414.00	298.18	-1069.37	-180.50	0.00	
8424.00†	90.000	270.150	7414.00	397.53	-1069.11	-280.50	0.00	



# Planned Wellpath Report

WINDER #10 (REV-A.0) PWP

Page 5 of 10



## REFERENCE WELLPATH IDENTIFICATION

Operator	EXTRACTION OIL & GAS	Slot	SLOT#10 WINDER #10(910'FNL & 684'FEL,SEC.09)
Area	COLORADO	Well	WINDER #10
Field	WELD COUNTY (NAD83/TRUE NORTH)	Wellbore	WINDER #10 PWB
Facility	SEC.09-T06N-R67W		

## WELLPATH DATA (181 stations) † = interpolated/extrapolated station

MD [ft]	Inclination [°]	Azimuth [°]	TVD [ft]	Vert Sect [ft]	North [ft]	East [ft]	DLS [°/100ft]	Comments
8524.00†	90.000	270.150	7414.00	496.89	-1068.85	-380.50	0.00	
8624.00†	90.000	270.150	7414.00	596.24	-1068.58	-480.50	0.00	
8724.00†	90.000	270.150	7414.00	695.59	-1068.32	-580.50	0.00	
8824.00†	90.000	270.150	7414.00	794.94	-1068.06	-680.50	0.00	
8924.00†	90.000	270.150	7414.00	894.29	-1067.80	-780.49	0.00	
9024.00†	90.000	270.150	7414.00	993.64	-1067.53	-880.49	0.00	
9124.00†	90.000	270.150	7414.00	1092.99	-1067.27	-980.49	0.00	
9224.00†	90.000	270.150	7414.00	1192.35	-1067.01	-1080.49	0.00	
9324.00†	90.000	270.150	7414.00	1291.70	-1066.75	-1180.49	0.00	
9424.00†	90.000	270.150	7414.00	1391.05	-1066.49	-1280.49	0.00	
9524.00†	90.000	270.150	7414.00	1490.40	-1066.22	-1380.49	0.00	
9624.00†	90.000	270.150	7414.00	1589.75	-1065.96	-1480.49	0.00	
9724.00†	90.000	270.150	7414.00	1689.10	-1065.70	-1580.49	0.00	
9824.00†	90.000	270.150	7414.00	1788.45	-1065.44	-1680.49	0.00	
9924.00†	90.000	270.150	7414.00	1887.81	-1065.17	-1780.49	0.00	
10024.00†	90.000	270.150	7414.00	1987.16	-1064.91	-1880.49	0.00	
10124.00†	90.000	270.150	7414.00	2086.51	-1064.65	-1980.49	0.00	
10224.00†	90.000	270.150	7414.00	2185.86	-1064.39	-2080.49	0.00	
10324.00†	90.000	270.150	7414.00	2285.21	-1064.13	-2180.49	0.00	
10424.00†	90.000	270.150	7414.00	2384.56	-1063.86	-2280.49	0.00	
10524.00†	90.000	270.150	7414.00	2483.92	-1063.60	-2380.49	0.00	
10624.00†	90.000	270.150	7414.00	2583.27	-1063.34	-2480.49	0.00	
10724.00†	90.000	270.150	7414.00	2682.62	-1063.08	-2580.49	0.00	
10824.00†	90.000	270.150	7414.00	2781.97	-1062.81	-2680.49	0.00	
10924.00†	90.000	270.150	7414.00	2881.32	-1062.55	-2780.49	0.00	
11024.00†	90.000	270.150	7414.00	2980.67	-1062.29	-2880.49	0.00	
11124.00†	90.000	270.150	7414.00	3080.02	-1062.03	-2980.49	0.00	
11224.00†	90.000	270.150	7414.00	3179.38	-1061.76	-3080.49	0.00	
11324.00†	90.000	270.150	7414.00	3278.73	-1061.50	-3180.49	0.00	
11424.00†	90.000	270.150	7414.00	3378.08	-1061.24	-3280.49	0.00	



# Planned Wellpath Report

WINDER #10 (REV-A.0) PWP

Page 6 of 10



## REFERENCE WELLPATH IDENTIFICATION

Operator	EXTRACTION OIL & GAS	Slot	SLOT#10 WINDER #10(910'FNL & 684'FEL,SEC.09)
Area	COLORADO	Well	WINDER #10
Field	WELD COUNTY (NAD83/TRUE NORTH)	Wellbore	WINDER #10 PWB
Facility	SEC.09-T06N-R67W		

## WELLPATH DATA (181 stations) † = interpolated/extrapolated station

MD [ft]	Inclination [°]	Azimuth [°]	TVD [ft]	Vert Sect [ft]	North [ft]	East [ft]	DLS [°/100ft]	Comments
11524.00†	90.000	270.150	7414.00	3477.43	-1060.98	-3380.49	0.00	
11624.00†	90.000	270.150	7414.00	3576.78	-1060.72	-3480.49	0.00	
11724.00†	90.000	270.150	7414.00	3676.13	-1060.45	-3580.49	0.00	
11824.00†	90.000	270.150	7414.00	3775.48	-1060.19	-3680.48	0.00	
11924.00†	90.000	270.150	7414.00	3874.84	-1059.93	-3780.48	0.00	
12024.00†	90.000	270.150	7414.00	3974.19	-1059.67	-3880.48	0.00	
12124.00†	90.000	270.150	7414.00	4073.54	-1059.40	-3980.48	0.00	
12224.00†	90.000	270.150	7414.00	4172.89	-1059.14	-4080.48	0.00	
12324.00†	90.000	270.150	7414.00	4272.24	-1058.88	-4180.48	0.00	
12424.00†	90.000	270.150	7414.00	4371.59	-1058.62	-4280.48	0.00	
12524.00†	90.000	270.150	7414.00	4470.94	-1058.36	-4380.48	0.00	
12624.00†	90.000	270.150	7414.00	4570.30	-1058.09	-4480.48	0.00	
12724.00†	90.000	270.150	7414.00	4669.65	-1057.83	-4580.48	0.00	
12824.00†	90.000	270.150	7414.00	4769.00	-1057.57	-4680.48	0.00	
12924.00†	90.000	270.150	7414.00	4868.35	-1057.31	-4780.48	0.00	
13024.00†	90.000	270.150	7414.00	4967.70	-1057.04	-4880.48	0.00	
13124.00†	90.000	270.150	7414.00	5067.05	-1056.78	-4980.48	0.00	
13224.00†	90.000	270.150	7414.00	5166.41	-1056.52	-5080.48	0.00	
13324.00†	90.000	270.150	7414.00	5265.76	-1056.26	-5180.48	0.00	
13424.00†	90.000	270.150	7414.00	5365.11	-1055.99	-5280.48	0.00	
13524.00†	90.000	270.150	7414.00	5464.46	-1055.73	-5380.48	0.00	
13624.00†	90.000	270.150	7414.00	5563.81	-1055.47	-5480.48	0.00	
13724.00†	90.000	270.150	7414.00	5663.16	-1055.21	-5580.48	0.00	
13824.00†	90.000	270.150	7414.00	5762.51	-1054.95	-5680.48	0.00	
13924.00†	90.000	270.150	7414.00	5861.87	-1054.68	-5780.48	0.00	
14024.00†	90.000	270.150	7414.00	5961.22	-1054.42	-5880.48	0.00	
14124.00†	90.000	270.150	7414.00	6060.57	-1054.16	-5980.48	0.00	
14224.00†	90.000	270.150	7414.00	6159.92	-1053.90	-6080.48	0.00	
14324.00†	90.000	270.150	7414.00	6259.27	-1053.63	-6180.48	0.00	
14424.00†	90.000	270.150	7414.00	6358.62	-1053.37	-6280.48	0.00	



# Planned Wellpath Report

WINDER #10 (REV-A.0) PWP

Page 7 of 10



## REFERENCE WELLPATH IDENTIFICATION

Operator	EXTRACTION OIL & GAS	Slot	SLOT#10 WINDER #10(910'FNL & 684'FEL,SEC.09)
Area	COLORADO	Well	WINDER #10
Field	WELD COUNTY (NAD83/TRUE NORTH)	Wellbore	WINDER #10 PWB
Facility	SEC.09-T06N-R67W		

## WELLPATH DATA (181 stations) † = interpolated/extrapolated station

MD [ft]	Inclination [°]	Azimuth [°]	TVD [ft]	Vert Sect [ft]	North [ft]	East [ft]	DLS [°/100ft]	Comments
14524.00†	90.000	270.150	7414.00	6457.97	-1053.11	-6380.48	0.00	
14624.00†	90.000	270.150	7414.00	6557.33	-1052.85	-6480.48	0.00	
14724.00†	90.000	270.150	7414.00	6656.68	-1052.59	-6580.47	0.00	
14824.00†	90.000	270.150	7414.00	6756.03	-1052.32	-6680.47	0.00	
14924.00†	90.000	270.150	7414.00	6855.38	-1052.06	-6780.47	0.00	
15024.00†	90.000	270.150	7414.00	6954.73	-1051.80	-6880.47	0.00	
15124.00†	90.000	270.150	7414.00	7054.08	-1051.54	-6980.47	0.00	
15224.00†	90.000	270.150	7414.00	7153.44	-1051.27	-7080.47	0.00	
15324.00†	90.000	270.150	7414.00	7252.79	-1051.01	-7180.47	0.00	
15424.00†	90.000	270.150	7414.00	7352.14	-1050.75	-7280.47	0.00	
15524.00†	90.000	270.150	7414.00	7451.49	-1050.49	-7380.47	0.00	
15624.00†	90.000	270.150	7414.00	7550.84	-1050.23	-7480.47	0.00	
15724.00†	90.000	270.150	7414.00	7650.19	-1049.96	-7580.47	0.00	
15824.00†	90.000	270.150	7414.00	7749.54	-1049.70	-7680.47	0.00	
15924.00†	90.000	270.150	7414.00	7848.90	-1049.44	-7780.47	0.00	
16024.00†	90.000	270.150	7414.00	7948.25	-1049.18	-7880.47	0.00	
16124.00†	90.000	270.150	7414.00	8047.60	-1048.91	-7980.47	0.00	
16224.00†	90.000	270.150	7414.00	8146.95	-1048.65	-8080.47	0.00	
16324.00†	90.000	270.150	7414.00	8246.30	-1048.39	-8180.47	0.00	
16424.00†	90.000	270.150	7414.00	8345.65	-1048.13	-8280.47	0.00	
16524.00†	90.000	270.150	7414.00	8445.00	-1047.86	-8380.47	0.00	
16624.00†	90.000	270.150	7414.00	8544.36	-1047.60	-8480.47	0.00	
16724.00†	90.000	270.150	7414.00	8643.71	-1047.34	-8580.47	0.00	
16824.00†	90.000	270.150	7414.00	8743.06	-1047.08	-8680.47	0.00	
16924.00†	90.000	270.150	7414.00	8842.41	-1046.82	-8780.47	0.00	
17024.00†	90.000	270.150	7414.00	8941.76	-1046.55	-8880.47	0.00	
17124.00†	90.000	270.150	7414.00	9041.11	-1046.29	-8980.47	0.00	
17224.00†	90.000	270.150	7414.00	9140.46	-1046.03	-9080.47	0.00	
17324.00†	90.000	270.150	7414.00	9239.82	-1045.77	-9180.47	0.00	
17424.00†	90.000	270.150	7414.00	9339.17	-1045.50	-9280.47	0.00	





# Planned Wellpath Report

WINDER #10 (REV-A.0) PWP

Page 8 of 10



## REFERENCE WELLPATH IDENTIFICATION

Operator	EXTRACTION OIL & GAS	Slot	SLOT#10 WINDER #10(910'FNL & 684'FEL,SEC.09)
Area	COLORADO	Well	WINDER #10
Field	WELD COUNTY (NAD83/TRUE NORTH)	Wellbore	WINDER #10 PWB
Facility	SEC.09-T06N-R67W		

## WELLPATH DATA (181 stations)

MD [ft]	Inclination [°]	Azimuth [°]	TVD [ft]	Vert Sect [ft]	North [ft]	East [ft]	DLS [°/100ft]	Comments
17494.44	90.000	270.150	7414.00 <sup>2</sup>	9409.15	-1045.32	-9350.91	0.00	End of Tangent

## HOLE & CASING SECTIONS - Ref Wellbore: WINDER #10 PWB Ref Wellpath: WINDER #10 (REV-A.0) PWP

String/Diameter	Start MD [ft]	End MD [ft]	Interval [ft]	Start TVD [ft]	End TVD [ft]	Start N/S [ft]	Start E/W [ft]	End N/S [ft]	End E/W [ft]
7in Casing Intermediate	24.00	7928.52	7904.52	24.00	7414.00	0.00	0.00	-1070.41	214.98



# Planned Wellpath Report

WINDER #10 (REV-A.0) PWP

Page 9 of 10



## REFERENCE WELLPATH IDENTIFICATION

Operator	EXTRACTION OIL & GAS	Slot	SLOT#10 WINDER #10(910'FNL & 684'FEL,SEC.09)
Area	COLORADO	Well	WINDER #10
Field	WELD COUNTY (NAD83/TRUE NORTH)	Wellbore	WINDER #10 PWB
Facility	SEC.09-T06N-R67W		

## TARGETS

Name	MD [ft]	TVD [ft]	North [ft]	East [ft]	Grid East [US ft]	Grid North [US ft]	Latitude	Longitude	Shape
TWELL/WINDER 1/2 SECTION 08		56.00	-3100.01	-9582.77	3159703.97	1424776.07	40°29'52.771"N	104°55'32.678"W	polygon
TWELL/WINDER 1/2 SECTION 09		56.00	-3100.01	-9582.77	3159703.97	1424776.07	40°29'52.771"N	104°55'32.678"W	polygon
TWELL/WINDER SECTION 08		56.00	-3100.01	-9582.77	3159703.97	1424776.07	40°29'52.771"N	104°55'32.678"W	polygon
TWELL/WINDER SECTION 09		56.00	-3100.01	-9582.77	3159703.97	1424776.07	40°29'52.771"N	104°55'32.678"W	polygon
2) WINDER #10 BHL ON PLAT REV-1(1789'FNL & 460'FWL,SEC.08)	17494.44	7414.00	-1045.32	-9350.91	3159921.72	1426832.23	40°30'13.075"N	104°55'29.687"W	point
1) WINDER #10 LANDING POINT	7928.52	7414.00	-1070.41	214.98	3169487.22	1426872.81	40°30'12.845"N	104°53'25.854"W	point
WINDER PAD NORTH 1/2 HARDLINES(460' SETBACKS)		7446.00	-3100.01	-9582.77	3159703.97	1424776.07	40°29'52.771"N	104°55'32.678"W	polygon

## SURVEY PROGRAM - Ref Wellbore: WINDER #10 PWB Ref Wellpath: WINDER #10 (REV-A.0) PWP

Start MD [ft]	End MD [ft]	Positional Uncertainty Model	Log Name/Comment	Wellbore
24.00	19000.00	NaviTrak (Standard)		WINDER #10 PWB



# Planned Wellpath Report

WINDER #10 (REV-A.0) PWP

Page 10 of 10



## REFERENCE WELLPATH IDENTIFICATION

Operator	EXTRACTION OIL & GAS	Slot	SLOT#10 WINDER #10(910'FNL & 684'FEL,SEC.09)
Area	COLORADO	Well	WINDER #10
Field	WELD COUNTY (NAD83/TRUE NORTH)	Wellbore	WINDER #10 PWB
Facility	SEC.09-T06N-R67W		

## WELLPATH COMMENTS

MD [ft]	Inclination [°]	Azimuth [°]	TVD [ft]	Comment
7383.89	41.908	259.228	7198.00	NIO A
7475.98	49.966	261.937	7262.00	NIO B
7571.75	58.398	264.145	7318.00	NIO C
7705.85	70.255	266.651	7376.00	FORT HAYS
7775.68	76.443	267.800	7396.00	CODELL