



May 8, 2014

7535 Hilltop Circle
Denver, CO 80221
www.petro-fs.com

Mr. Matt Lepore, Director
Colorado Oil and Gas Conservation Commission
1120 Lincoln Street
Suite 801
Denver, Colorado 80203

**RE: COGCC Rule 318A.e.: Proposed Wellbore Spacing Unit
Winder #9 Well
NENE Section 8 and 9, Township 6 North, Range 67 West
Weld County, Colorado**

Dear Mr. Lepore:

Extraction Oil and Gas (Extraction) is planning to drill the above referenced well in accordance with the provisions set out in COGCC Rule 318A.e. Extraction's proposed wellbore spacing unit consists of:

NENE, NWNE, NENW, NWNW, SWNW, SENW, SWNE, SENE Section 8, Township 6 North, Range 67 West
NENE, NWNE, NENW, NWNW, SWNW, SENW, SWNE, SENE Section 9, Township 6 North, Range 67 West
Containing 640 acres, more or less

Extraction is not the only owner within the proposed wellbore spacing unit and has provided notice to the remaining owners within this spacing unit, as required by COGCC Rule 318A.e.(6). Copies of the required notification letters are on file at Extraction's office. The required thirty (30) day notice period has elapsed absent the receipt by Extraction of any objection to their proposal by the owners within the proposed spacing unit for the subject well.

Enclosed is the Proposed Spacing Unit Plat to assist in your review and approval of Extraction's proposed Application for Permit to Drill (APD) for the Winder #9 well.

We are what we repeatedly do. Excellence, then, is not an act, but a habit.

-Aristotle



Mr. Matt Lepore
May 8, 2014
Page Two

7535 Hilltop Circle
Denver, CO 80221
www.petro-fs.com

Extraction respectfully requests the COGCC review the enclosed information and approve the requested exception location waiver and APD for the Winder #9 well. Many thanks for your attention to this matter.

Respectfully,

A handwritten signature in blue ink that reads "Sonia Stephens". The signature is fluid and cursive, with the first name "Sonia" being more prominent than the last name "Stephens".

Sonia Stephens
Regulatory Technician
Agent for Extraction Oil and Gas

:ss

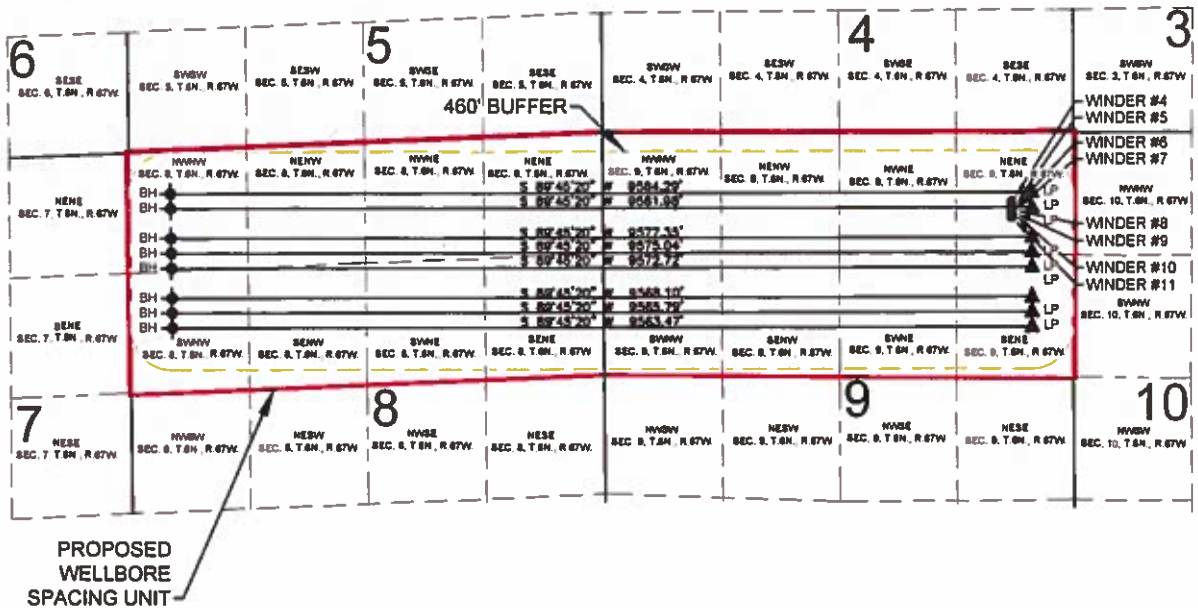
Enclosure: Proposed Spacing Unit Plat

We are what we repeatedly do. Excellence, then, is not an act, but a habit.

-Aristotle

PROPOSED 318A.e. WELLBORE SPACING UNIT

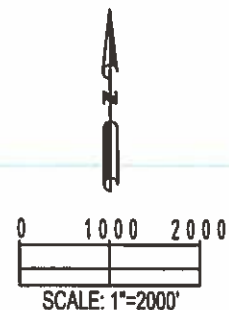
SECTION 8 & 9, TOWNSHIP 6 NORTH, RANGE 67 WEST, 6TH P.M.



WELL NAME	SURFACE FOOTAGES		SURFACE LOCATION (NAD83)	LANDING POINT LOCATION (NAD83)	BOTTOM HOLE LOCATION (NAD83)
WINDER #4	754' FNL	684' FEL	LATITUDE= 40.506935° LONGITUDE= 104.891283°	LATITUDE= 40.507191° LONGITUDE= 104.890474°	LATITUDE= 40.507255° LONGITUDE= 104.924941°
WINDER #5	780' FNL	684' FEL	LATITUDE= 40.506883° LONGITUDE= 104.891284°	LATITUDE= 40.506739° LONGITUDE= 104.890479°	LATITUDE= 40.506802° LONGITUDE= 104.924937°
WINDER #6	806' FNL	684' FEL	LATITUDE= 40.506782° LONGITUDE= 104.891285°	LATITUDE= 40.505833° LONGITUDE= 104.890489°	LATITUDE= 40.505896° LONGITUDE= 104.924930°
WINDER #7	832' FNL	684' FEL	LATITUDE= 40.506720° LONGITUDE= 104.891286°	LATITUDE= 40.505380° LONGITUDE= 104.890484°	LATITUDE= 40.505443° LONGITUDE= 104.924927°
WINDER #8	858' FNL	684' FEL	LATITUDE= 40.506649° LONGITUDE= 104.891287°	LATITUDE= 40.504927° LONGITUDE= 104.890499°	LATITUDE= 40.504990° LONGITUDE= 104.924924°
WINDER #9	884' FNL	684' FEL	LATITUDE= 40.506578° LONGITUDE= 104.891287°	LATITUDE= 40.504021° LONGITUDE= 104.890510°	LATITUDE= 40.504084° LONGITUDE= 104.924917°
WINDER #10	910' FNL	684' FEL	LATITUDE= 40.506508° LONGITUDE= 104.891288°	LATITUDE= 40.503588° LONGITUDE= 104.890515°	LATITUDE= 40.503632° LONGITUDE= 104.924913°
WINDER #11	936' FNL	684' FEL	LATITUDE= 40.506435° LONGITUDE= 104.891289°	LATITUDE= 40.503115° LONGITUDE= 104.890520°	LATITUDE= 40.503178° LONGITUDE= 104.924910°

LEGEND

- = PROPOSED WELL
- ▲ = LANDING POINT
- ✦ = BOTTOM HOLE
- LP = LANDING POINT
- BH = BOTTOM HOLE



PREPARED BY: PFS Petroleum Field Services, LLC 7535 Hilltop Circle Denver, CO 80221	FIELD DATE: 02-19-14 DRAWING DATE: 03-18-14 BY: JWJ CHECKED: SMG	SURFACE LOCATION: NE 1/4 NE 1/4, SEC. 9, T6N, R67W, 6TH P.M. WELD COUNTY, COLORADO
--	---	---