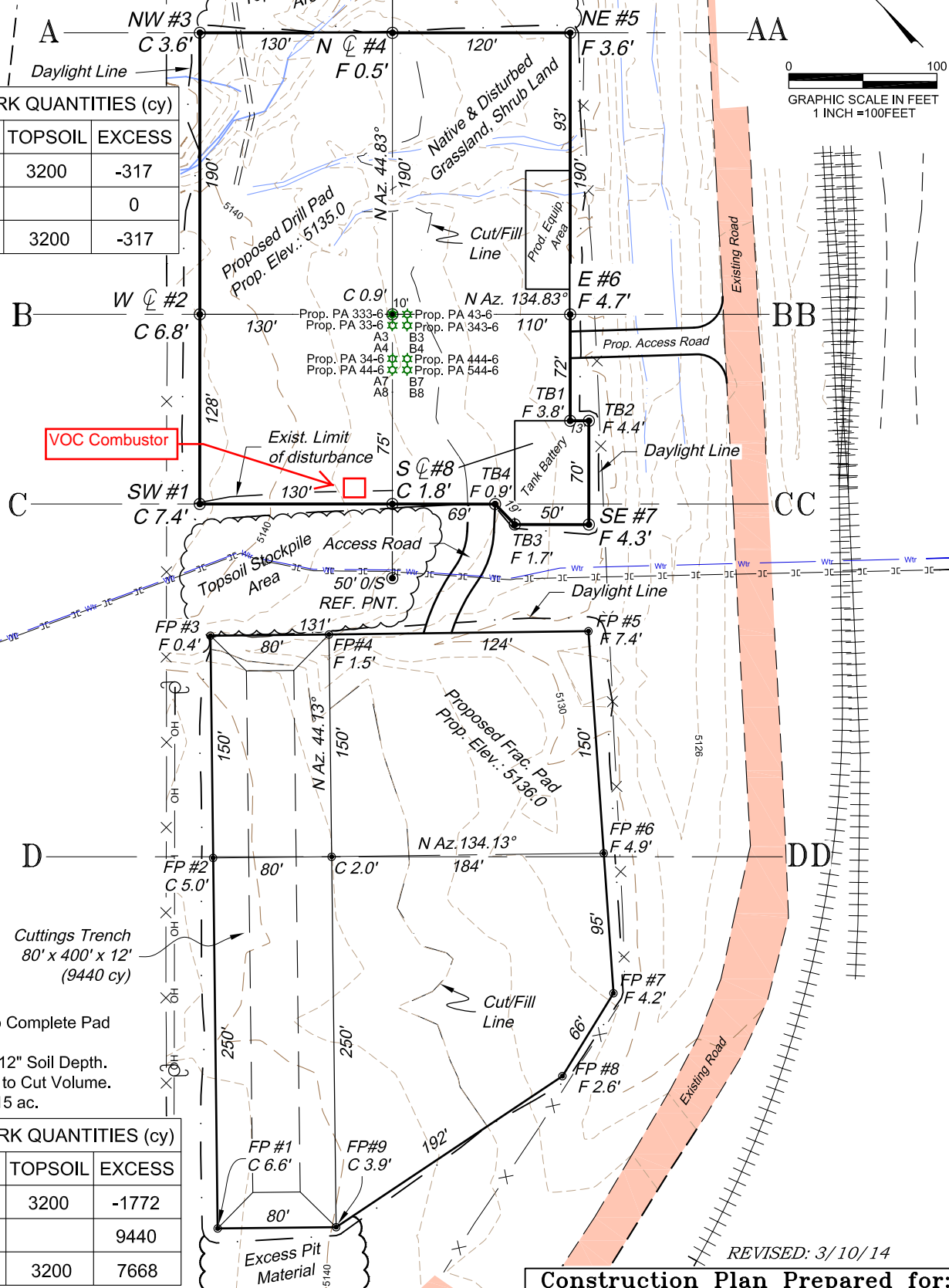


***NOTE: DRILL PAD**

- 1.) Use Excess Pit Material to Complete Pad Surfaces.
- 2.) Topsoil Volume Based on 12" Soil Depth.
- 3.) 10% Swell Factor Applied to Cut Volume.

ESTIMATED EARTHWORK QUANTITIES (cy)

ITEM	CUT	FILL	TOPSOIL	EXCESS
PAD	5973	3090	3200	-317
PIT	0			0
TOTALS	5973	3090	3200	-317



***NOTE: FRAC PAD**

- 1.) Use Excess Pit Material to Complete Pad Surfaces.
- 2.) Topsoil Volume Based on 12" Soil Depth.
- 3.) 10% Swell Factor Applied to Cut Volume.
- 4.) Total Disturbed Area = 6.15 ac.

ESTIMATED EARTHWORK QUANTITIES (cy)

ITEM	CUT	FILL	TOPSOIL	EXCESS
PAD	6460	5032	3200	-1772
PIT	9440			9440
TOTALS	15900	5032	3200	7668

136 East Third Street
Rifle, Colorado 81650
Ph. (970) 625-2720
Fax (970) 625-2773



BOOKCLIFF
Survey Services, Inc.

SCALE: 1" = 100'
DATE: 8/23/13
PLAT: 2 of 7
PROJECT: WPX Valley
DFT: cs

Construction Plan Prepared for:
WPX ENERGY WPX Energy Rocky Mountain, LLC

PA 24-6 Drill Pad - Plat 2
CONSTRUCTION LAYOUT

REVISED: 3/10/14