

Synergy Resources

Well Name: **SRC Kiehn C-4CHZ**

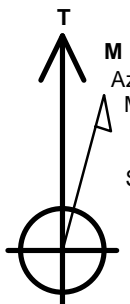
Surface Location: SRC Kiehn Pad Sec.4-T4N-R68W
North American Datum 1983 , US State Plane 1983 , Colorado Northern Zone
Ground Elevation: 5064.0

+N/-S	+E/-W	Northing	Easting	Latitude	Longitude	Slot
0.0	0.0	1365561.26	3137954.25	40.335810	-105.005137	

RKB - 13' WELL @ 5077.0ft (RKB - 13')

WELLBORE TARGET DETAILS

Name	TVD	+N/-S	+E/-W	Shape
SHL 201'FSL & 1738'FEL	1.0	0.0	0.0	Point
BHL 470'FNL & 1592'FEL	7000.0	4423.4	-71.1	Point



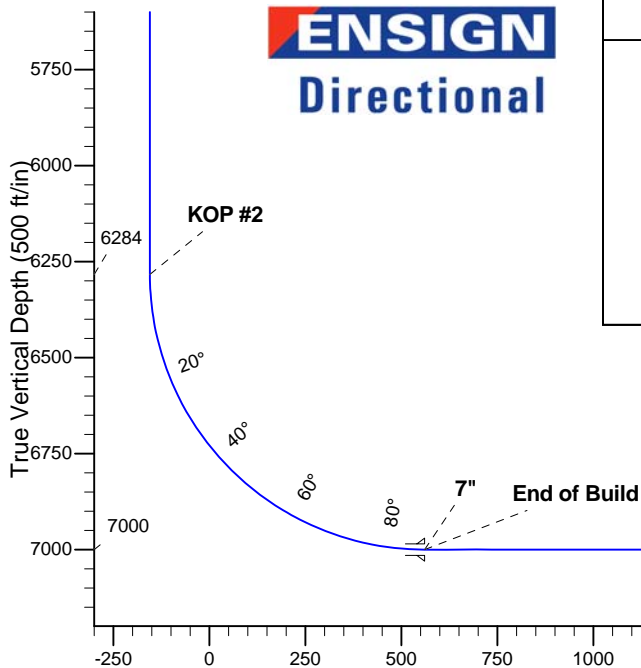
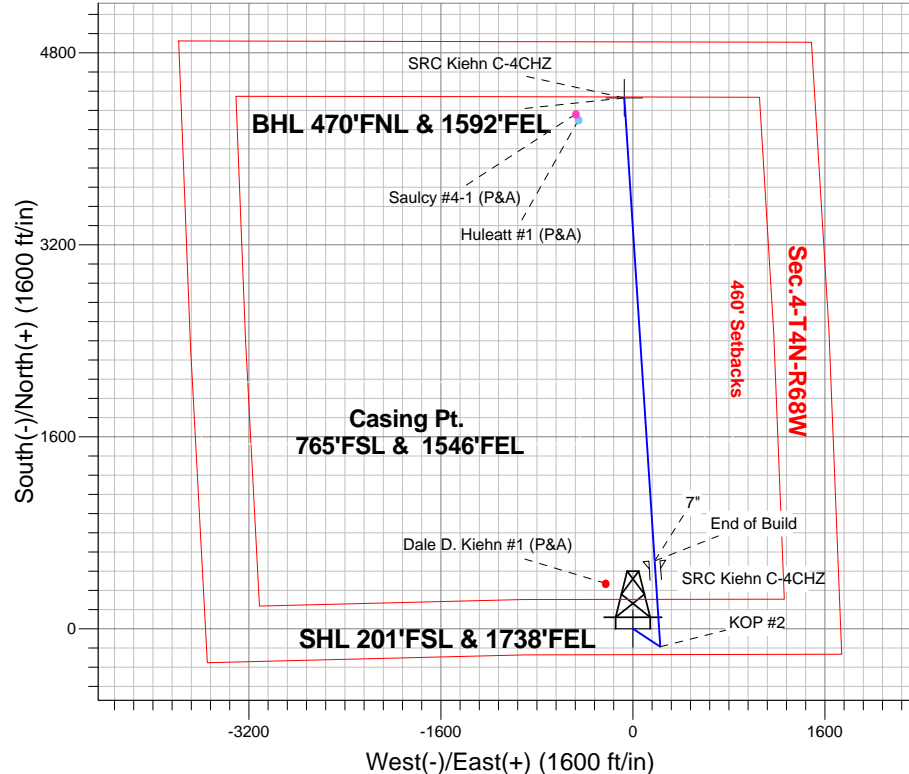
Azimuths to True North
Magnetic North: 8.60°

Magnetic Field
Strength: 52769.0snT
Dip Angle: 66.86°
Date: 4/25/2014
Model: IGRF2010

ANNOTATIONS

TVD	MD	Annotation
3000.0	3000.0	KOP #1
6283.8	6300.2	KOP #2
7000.0	7425.3	End of Build

SRC Kiehn Pad Sec.4-T4N-R68W
SRC Kiehn C-4CHZ
Plan #2 (4-25-14)
11:25, April 29 2014



SECTION DETAILS

Sec	MD	Inc	Azi	TVD	+N/-S	+E/-W	DLeg	TFace	Target	VSec
1	0.0	0.00	0.00	0.0	0.0	0.0	0.00	0.00	0.0	
2	3000.0	0.00	0.00	3000.0	0.0	0.0	0.00	0.00	0.0	
3	3364.9	7.30	123.53	3363.9	-12.8	19.3	2.00	123.53	-13.1	
4	5151.5	7.30	123.53	5136.1	-138.2	208.6	0.00	0.00	-141.5	
5	5516.4	0.00	0.00	5500.0	-151.0	227.9	2.00	180.00	-154.6	
6	6300.2	0.00	0.00	6283.8	-151.0	227.9	0.00	0.00	-154.6	
7	7425.3	90.00	356.26	7000.0	563.7	181.2	8.00	356.26	560.7	
8	11293.3	90.00	356.26	7000.0	4423.4	-71.1	0.00	0.00	4424.0	BHL 470'FNL & 1592'FEL

Vertical Section at 359.08° (500 ft/in)



Synergy Resources

SEC.4-T4N-R68W

SRC Kiehn Pad Sec.4-T4N-R68W

SRC Kiehn C-4CHZ

Wellbore #1

Plan: Plan #2 (4-25-14)

Standard Planning Report

29 April, 2014

Database:	Landmark	Local Co-ordinate Reference:	Well SRC Kiehn C-4CHZ
Company:	Synergy Resources	TVD Reference:	WELL @ 5077.0ft (RKB - 13')
Project:	SEC.4-T4N-R68W	MD Reference:	WELL @ 5077.0ft (RKB - 13')
Site:	SRC Kiehn Pad Sec.4-T4N-R68W	North Reference:	True
Well:	SRC Kiehn C-4CHZ	Survey Calculation Method:	Minimum Curvature
Wellbore:	Wellbore #1		
Design:	Plan #2 (4-25-14)		

Project	SEC.4-T4N-R68W, Weld, CO		
Map System:	US State Plane 1983	System Datum:	Mean Sea Level
Geo Datum:	North American Datum 1983		Using Well Reference Point
Map Zone:	Colorado Northern Zone		Using geodetic scale factor

Site	SRC Kiehn Pad Sec.4-T4N-R68W				
Site Position:		Northing:	1,365,561.75 ft	Latitude:	40.335811
From:	Lat/Long	Easting:	3,137,974.04 ft	Longitude:	-105.005066
Position Uncertainty:	0.0 ft	Slot Radius:	"	Grid Convergence:	0.32 °

Well	SRC Kiehn C-4CHZ					
Well Position	+N/-S	-0.4 ft	Northing:	1,365,561.26 ft	Latitude:	40.335810
	+E/-W	-19.8 ft	Easting:	3,137,954.25 ft	Longitude:	-105.005137
Position Uncertainty		0.0 ft	Wellhead Elevation:	ft	Ground Level:	5,064.0 ft

Wellbore	Wellbore #1				
Magnetics	Model Name	Sample Date	Declination (°)	Dip Angle (°)	Field Strength (nT)
	IGRF2010	4/25/2014	8.60	66.86	52,769

Design	Plan #2 (4-25-14)			
Audit Notes:				
Version:	Phase:	PROTOTYPE	Tie On Depth:	0.0
Vertical Section:	Depth From (TVD) (ft)	+N/-S (ft)	+E/-W (ft)	Direction (°)
	0.0	0.0	0.0	359.08

Plan Sections										
Measured Depth (ft)	Inclination (°)	Azimuth (°)	Vertical Depth (ft)	+N/-S (ft)	+E/-W (ft)	Dogleg Rate (°/100ft)	Build Rate (°/100ft)	Turn Rate (°/100ft)	TFO (°)	Target
0.0	0.00	0.00	0.0	0.0	0.0	0.00	0.00	0.00	0.00	
3,000.0	0.00	0.00	3,000.0	0.0	0.0	0.00	0.00	0.00	0.00	
3,364.9	7.30	123.53	3,363.9	-12.8	19.3	2.00	2.00	0.00	123.53	
5,151.5	7.30	123.53	5,136.1	-138.2	208.6	0.00	0.00	0.00	0.00	
5,516.4	0.00	0.00	5,500.0	-151.0	227.9	2.00	-2.00	0.00	180.00	
6,300.2	0.00	0.00	6,283.8	-151.0	227.9	0.00	0.00	0.00	0.00	
7,425.3	90.00	356.26	7,000.0	563.7	181.2	8.00	8.00	0.00	356.26	
11,293.3	90.00	356.26	7,000.0	4,423.4	-71.1	0.00	0.00	0.00	0.00	BHL 470'FNL & 15°

Database:	Landmark	Local Co-ordinate Reference:	Well SRC Kiehn C-4CHZ
Company:	Synergy Resources	TVD Reference:	WELL @ 5077.0ft (RKB - 13')
Project:	SEC.4-T4N-R68W	MD Reference:	WELL @ 5077.0ft (RKB - 13')
Site:	SRC Kiehn Pad Sec.4-T4N-R68W	North Reference:	True
Well:	SRC Kiehn C-4CHZ	Survey Calculation Method:	Minimum Curvature
Wellbore:	Wellbore #1		
Design:	Plan #2 (4-25-14)		

Planned Survey									
Measured Depth (ft)	Inclination (°)	Azimuth (°)	Vertical Depth (ft)	+N/-S (ft)	+E/-W (ft)	Vertical Section (ft)	Dogleg Rate (°/100ft)	Build Rate (°/100ft)	Turn Rate (°/100ft)
0.0	0.00	0.00	0.0	0.0	0.0	0.0	0.00	0.00	0.00
1.0	0.00	0.00	1.0	0.0	0.0	0.0	0.00	0.00	0.00
SHL 201'FSL & 1738'FEL									
100.0	0.00	0.00	100.0	0.0	0.0	0.0	0.00	0.00	0.00
200.0	0.00	0.00	200.0	0.0	0.0	0.0	0.00	0.00	0.00
300.0	0.00	0.00	300.0	0.0	0.0	0.0	0.00	0.00	0.00
400.0	0.00	0.00	400.0	0.0	0.0	0.0	0.00	0.00	0.00
500.0	0.00	0.00	500.0	0.0	0.0	0.0	0.00	0.00	0.00
600.0	0.00	0.00	600.0	0.0	0.0	0.0	0.00	0.00	0.00
700.0	0.00	0.00	700.0	0.0	0.0	0.0	0.00	0.00	0.00
800.0	0.00	0.00	800.0	0.0	0.0	0.0	0.00	0.00	0.00
900.0	0.00	0.00	900.0	0.0	0.0	0.0	0.00	0.00	0.00
1,000.0	0.00	0.00	1,000.0	0.0	0.0	0.0	0.00	0.00	0.00
1,100.0	0.00	0.00	1,100.0	0.0	0.0	0.0	0.00	0.00	0.00
1,200.0	0.00	0.00	1,200.0	0.0	0.0	0.0	0.00	0.00	0.00
1,300.0	0.00	0.00	1,300.0	0.0	0.0	0.0	0.00	0.00	0.00
1,400.0	0.00	0.00	1,400.0	0.0	0.0	0.0	0.00	0.00	0.00
1,500.0	0.00	0.00	1,500.0	0.0	0.0	0.0	0.00	0.00	0.00
1,600.0	0.00	0.00	1,600.0	0.0	0.0	0.0	0.00	0.00	0.00
1,700.0	0.00	0.00	1,700.0	0.0	0.0	0.0	0.00	0.00	0.00
1,800.0	0.00	0.00	1,800.0	0.0	0.0	0.0	0.00	0.00	0.00
1,900.0	0.00	0.00	1,900.0	0.0	0.0	0.0	0.00	0.00	0.00
2,000.0	0.00	0.00	2,000.0	0.0	0.0	0.0	0.00	0.00	0.00
2,100.0	0.00	0.00	2,100.0	0.0	0.0	0.0	0.00	0.00	0.00
2,200.0	0.00	0.00	2,200.0	0.0	0.0	0.0	0.00	0.00	0.00
2,300.0	0.00	0.00	2,300.0	0.0	0.0	0.0	0.00	0.00	0.00
2,400.0	0.00	0.00	2,400.0	0.0	0.0	0.0	0.00	0.00	0.00
2,500.0	0.00	0.00	2,500.0	0.0	0.0	0.0	0.00	0.00	0.00
2,600.0	0.00	0.00	2,600.0	0.0	0.0	0.0	0.00	0.00	0.00
2,700.0	0.00	0.00	2,700.0	0.0	0.0	0.0	0.00	0.00	0.00
2,800.0	0.00	0.00	2,800.0	0.0	0.0	0.0	0.00	0.00	0.00
2,900.0	0.00	0.00	2,900.0	0.0	0.0	0.0	0.00	0.00	0.00
3,000.0	0.00	0.00	3,000.0	0.0	0.0	0.0	0.00	0.00	0.00
KOP #1									
3,100.0	2.00	123.53	3,100.0	-1.0	1.5	-1.0	2.00	2.00	0.00
3,200.0	4.00	123.53	3,199.8	-3.9	5.8	-3.9	2.00	2.00	0.00
3,300.0	6.00	123.53	3,299.5	-8.7	13.1	-8.9	2.00	2.00	0.00
3,364.9	7.30	123.53	3,363.9	-12.8	19.3	-13.1	2.00	2.00	0.00
3,400.0	7.30	123.53	3,398.7	-15.3	23.1	-15.6	0.00	0.00	0.00
3,500.0	7.30	123.53	3,497.9	-22.3	33.7	-22.8	0.00	0.00	0.00
3,600.0	7.30	123.53	3,597.1	-29.3	44.2	-30.0	0.00	0.00	0.00
3,700.0	7.30	123.53	3,696.3	-36.3	54.8	-37.2	0.00	0.00	0.00
3,800.0	7.30	123.53	3,795.5	-43.3	65.4	-44.4	0.00	0.00	0.00
3,900.0	7.30	123.53	3,894.7	-50.4	76.0	-51.6	0.00	0.00	0.00
4,000.0	7.30	123.53	3,993.9	-57.4	86.6	-58.8	0.00	0.00	0.00
4,100.0	7.30	123.53	4,093.1	-64.4	97.2	-66.0	0.00	0.00	0.00
4,200.0	7.30	123.53	4,192.2	-71.4	107.8	-73.1	0.00	0.00	0.00
4,300.0	7.30	123.53	4,291.4	-78.4	118.4	-80.3	0.00	0.00	0.00
4,400.0	7.30	123.53	4,390.6	-85.4	129.0	-87.5	0.00	0.00	0.00
4,500.0	7.30	123.53	4,489.8	-92.5	139.6	-94.7	0.00	0.00	0.00
4,600.0	7.30	123.53	4,589.0	-99.5	150.1	-101.9	0.00	0.00	0.00
4,700.0	7.30	123.53	4,688.2	-106.5	160.7	-109.1	0.00	0.00	0.00
4,800.0	7.30	123.53	4,787.4	-113.5	171.3	-116.3	0.00	0.00	0.00
4,900.0	7.30	123.53	4,886.6	-120.5	181.9	-123.4	0.00	0.00	0.00

Database:	Landmark	Local Co-ordinate Reference:	Well SRC Kiehn C-4CHZ
Company:	Synergy Resources	TVD Reference:	WELL @ 5077.0ft (RKB - 13')
Project:	SEC.4-T4N-R68W	MD Reference:	WELL @ 5077.0ft (RKB - 13')
Site:	SRC Kiehn Pad Sec.4-T4N-R68W	North Reference:	True
Well:	SRC Kiehn C-4CHZ	Survey Calculation Method:	Minimum Curvature
Wellbore:	Wellbore #1		
Design:	Plan #2 (4-25-14)		

Planned Survey									
Measured Depth (ft)	Inclination (°)	Azimuth (°)	Vertical Depth (ft)	+N/-S (ft)	+E/-W (ft)	Vertical Section (ft)	Dogleg Rate (°/100ft)	Build Rate (°/100ft)	Turn Rate (°/100ft)
5,000.0	7.30	123.53	4,985.8	-127.5	192.5	-130.6	0.00	0.00	0.00
5,100.0	7.30	123.53	5,085.0	-134.6	203.1	-137.8	0.00	0.00	0.00
5,151.5	7.30	123.53	5,136.1	-138.2	208.6	-141.5	0.00	0.00	0.00
5,200.0	6.33	123.53	5,184.2	-141.4	213.3	-144.8	2.00	-2.00	0.00
5,300.0	4.33	123.53	5,283.8	-146.5	221.1	-150.0	2.00	-2.00	0.00
5,400.0	2.33	123.53	5,383.6	-149.7	225.9	-153.3	2.00	-2.00	0.00
5,500.0	0.33	123.53	5,483.6	-151.0	227.9	-154.6	2.00	-2.00	0.00
5,516.4	0.00	0.00	5,500.0	-151.0	227.9	-154.6	2.00	-2.00	0.00
5,600.0	0.00	0.00	5,583.6	-151.0	227.9	-154.6	0.00	0.00	0.00
5,700.0	0.00	0.00	5,683.6	-151.0	227.9	-154.6	0.00	0.00	0.00
5,800.0	0.00	0.00	5,783.6	-151.0	227.9	-154.6	0.00	0.00	0.00
5,900.0	0.00	0.00	5,883.6	-151.0	227.9	-154.6	0.00	0.00	0.00
6,000.0	0.00	0.00	5,983.6	-151.0	227.9	-154.6	0.00	0.00	0.00
6,100.0	0.00	0.00	6,083.6	-151.0	227.9	-154.6	0.00	0.00	0.00
6,200.0	0.00	0.00	6,183.6	-151.0	227.9	-154.6	0.00	0.00	0.00
6,300.0	0.00	0.00	6,283.6	-151.0	227.9	-154.6	0.00	0.00	0.00
6,300.2	0.00	0.00	6,283.8	-151.0	227.9	-154.6	0.00	0.00	0.00
KOP #2									
6,400.0	7.98	356.26	6,383.2	-144.1	227.4	-147.7	8.00	8.00	0.00
6,500.0	15.98	356.26	6,481.0	-123.4	226.1	-127.0	8.00	8.00	0.00
6,600.0	23.98	356.26	6,574.9	-89.3	223.9	-92.9	8.00	8.00	0.00
6,700.0	31.98	356.26	6,663.1	-42.5	220.8	-46.1	8.00	8.00	0.00
6,800.0	39.98	356.26	6,744.0	16.0	217.0	12.6	8.00	8.00	0.00
6,900.0	47.98	356.26	6,815.9	85.3	212.5	81.9	8.00	8.00	0.00
7,000.0	55.98	356.26	6,877.4	163.8	207.3	160.5	8.00	8.00	0.00
7,100.0	63.98	356.26	6,927.4	250.2	201.7	246.9	8.00	8.00	0.00
7,200.0	71.98	356.26	6,964.9	342.6	195.6	339.4	8.00	8.00	0.00
7,300.0	79.98	356.26	6,989.1	439.3	189.3	436.2	8.00	8.00	0.00
7,400.0	87.98	356.26	6,999.6	538.5	182.8	535.5	8.00	8.00	0.00
7,425.3	90.00	356.26	7,000.0	563.7	181.2	560.7	7.98	7.98	0.00
End of Build - 7"									
7,500.0	90.00	356.26	7,000.0	638.3	176.3	635.3	0.00	0.00	0.00
7,600.0	90.00	356.26	7,000.0	738.1	169.8	735.2	0.00	0.00	0.00
7,700.0	90.00	356.26	7,000.0	837.8	163.3	835.1	0.00	0.00	0.00
7,800.0	90.00	356.26	7,000.0	937.6	156.7	935.0	0.00	0.00	0.00
7,900.0	90.00	356.26	7,000.0	1,037.4	150.2	1,034.9	0.00	0.00	0.00
8,000.0	90.00	356.26	7,000.0	1,137.2	143.7	1,134.7	0.00	0.00	0.00
8,100.0	90.00	356.26	7,000.0	1,237.0	137.2	1,234.6	0.00	0.00	0.00
8,200.0	90.00	356.26	7,000.0	1,336.8	130.7	1,334.5	0.00	0.00	0.00
8,300.0	90.00	356.26	7,000.0	1,436.6	124.1	1,434.4	0.00	0.00	0.00
8,400.0	90.00	356.26	7,000.0	1,536.3	117.6	1,534.3	0.00	0.00	0.00
8,500.0	90.00	356.26	7,000.0	1,636.1	111.1	1,634.1	0.00	0.00	0.00
8,600.0	90.00	356.26	7,000.0	1,735.9	104.6	1,734.0	0.00	0.00	0.00
8,700.0	90.00	356.26	7,000.0	1,835.7	98.1	1,833.9	0.00	0.00	0.00
8,800.0	90.00	356.26	7,000.0	1,935.5	91.5	1,933.8	0.00	0.00	0.00
8,900.0	90.00	356.26	7,000.0	2,035.3	85.0	2,033.7	0.00	0.00	0.00
9,000.0	90.00	356.26	7,000.0	2,135.1	78.5	2,133.5	0.00	0.00	0.00
9,100.0	90.00	356.26	7,000.0	2,234.9	72.0	2,233.4	0.00	0.00	0.00
9,200.0	90.00	356.26	7,000.0	2,334.6	65.4	2,333.3	0.00	0.00	0.00
9,300.0	90.00	356.26	7,000.0	2,434.4	58.9	2,433.2	0.00	0.00	0.00
9,400.0	90.00	356.26	7,000.0	2,534.2	52.4	2,533.0	0.00	0.00	0.00
9,500.0	90.00	356.26	7,000.0	2,634.0	45.9	2,632.9	0.00	0.00	0.00
9,600.0	90.00	356.26	7,000.0	2,733.8	39.4	2,732.8	0.00	0.00	0.00
9,700.0	90.00	356.26	7,000.0	2,833.6	32.8	2,832.7	0.00	0.00	0.00

Database:	Landmark	Local Co-ordinate Reference:	Well SRC Kiehn C-4CHZ
Company:	Synergy Resources	TVD Reference:	WELL @ 5077.0ft (RKB - 13')
Project:	SEC.4-T4N-R68W	MD Reference:	WELL @ 5077.0ft (RKB - 13')
Site:	SRC Kiehn Pad Sec.4-T4N-R68W	North Reference:	True
Well:	SRC Kiehn C-4CHZ	Survey Calculation Method:	Minimum Curvature
Wellbore:	Wellbore #1		
Design:	Plan #2 (4-25-14)		

Planned Survey										
Measured Depth (ft)	Inclination (°)	Azimuth (°)	Vertical Depth (ft)	+N/-S (ft)	+E/-W (ft)	Vertical Section (ft)	Dogleg Rate (°/100ft)	Build Rate (°/100ft)	Turn Rate (°/100ft)	
9,800.0	90.00	356.26	7,000.0	2,933.4	26.3	2,932.6	0.00	0.00	0.00	
9,900.0	90.00	356.26	7,000.0	3,033.2	19.8	3,032.4	0.00	0.00	0.00	
10,000.0	90.00	356.26	7,000.0	3,132.9	13.3	3,132.3	0.00	0.00	0.00	
10,100.0	90.00	356.26	7,000.0	3,232.7	6.7	3,232.2	0.00	0.00	0.00	
10,200.0	90.00	356.26	7,000.0	3,332.5	0.2	3,332.1	0.00	0.00	0.00	
10,300.0	90.00	356.26	7,000.0	3,432.3	-6.3	3,432.0	0.00	0.00	0.00	
10,400.0	90.00	356.26	7,000.0	3,532.1	-12.8	3,531.8	0.00	0.00	0.00	
10,500.0	90.00	356.26	7,000.0	3,631.9	-19.3	3,631.7	0.00	0.00	0.00	
10,600.0	90.00	356.26	7,000.0	3,731.7	-25.9	3,731.6	0.00	0.00	0.00	
10,700.0	90.00	356.26	7,000.0	3,831.5	-32.4	3,831.5	0.00	0.00	0.00	
10,800.0	90.00	356.26	7,000.0	3,931.2	-38.9	3,931.4	0.00	0.00	0.00	
10,900.0	90.00	356.26	7,000.0	4,031.0	-45.4	4,031.2	0.00	0.00	0.00	
11,000.0	90.00	356.26	7,000.0	4,130.8	-52.0	4,131.1	0.00	0.00	0.00	
11,100.0	90.00	356.26	7,000.0	4,230.6	-58.5	4,231.0	0.00	0.00	0.00	
11,200.0	90.00	356.26	7,000.0	4,330.4	-65.0	4,330.9	0.00	0.00	0.00	
11,293.3	90.00	356.26	7,000.0	4,423.4	-71.1	4,424.0	0.00	0.00	0.00	
BHL 470'FNL & 1592'FEL										

Casing Points					
Measured Depth (ft)	Vertical Depth (ft)	Name	Casing Diameter (")	Hole Diameter (")	
7,425.3	7,000.0	7"	7	7-1/2	

Plan Annotations					
Measured Depth (ft)	Vertical Depth (ft)	Local Coordinates			
		+N/-S (ft)	+E/-W (ft)	Comment	
3,000.0	3,000.0	0.0	0.0	KOP #1	
6,300.2	6,283.8	-151.0	227.9	KOP #2	
7,425.3	7,000.0	563.7	181.2	End of Build	



Synergy Resources

SEC.4-T4N-R68W

SRC Kiehn Pad Sec.4-T4N-R68W

SRC Kiehn C-4CHZ

Wellbore #1

Plan #2 (4-25-14)

Anticollision Report

29 April, 2014

Company:	Synergy Resources	Local Co-ordinate Reference:	Well SRC Kiehn C-4CHZ
Project:	SEC.4-T4N-R68W	TVD Reference:	WELL @ 5077.0ft (RKB - 13')
Reference Site:	SRC Kiehn Pad Sec.4-T4N-R68W	MD Reference:	WELL @ 5077.0ft (RKB - 13')
Site Error:	0.0ft	North Reference:	True
Reference Well:	SRC Kiehn C-4CHZ	Survey Calculation Method:	Minimum Curvature
Well Error:	0.0ft	Output errors are at	2.00 sigma
Reference Wellbore	Wellbore #1	Database:	Landmark
Reference Design:	Plan #2 (4-25-14)	Offset TVD Reference:	Offset Datum

Offset Design													Offset Site Error:	0.0 ft
Survey Program: 7790-UNKNOWN													Offset Well Error:	0.0 ft
Reference		Offset		Semi Major Axis			Distance							Warning
Measured Depth (ft)	Vertical Depth (ft)	Measured Depth (ft)	Vertical Depth (ft)	Reference (ft)	Offset (ft)	Highside Toolface (°)	Offset Wellbore Centre +N/-S (ft)	+E/-W (ft)	Between Centres (ft)	Between Ellipses (ft)	Minimum Separation (ft)	Separation Factor		
1,100.0	1,100.0	3,773.0	3,773.0	2.4	75.5	-30.97	376.7	-226.1	439.3	361.5	77.82	5.645		
1,200.0	1,200.0	3,873.0	3,873.0	2.6	77.5	-30.97	376.7	-226.1	439.3	359.3	80.04	5.488		
1,300.0	1,300.0	3,973.0	3,973.0	2.8	79.5	-30.97	376.7	-226.1	439.3	357.1	82.27	5.340		
1,400.0	1,400.0	4,073.0	4,073.0	3.0	81.5	-30.97	376.7	-226.1	439.3	354.8	84.49	5.199		
1,500.0	1,500.0	4,173.0	4,173.0	3.3	83.5	-30.97	376.7	-226.1	439.3	352.6	86.72	5.066		
1,600.0	1,600.0	4,273.0	4,273.0	3.5	85.5	-30.97	376.7	-226.1	439.3	350.4	88.94	4.939		
1,700.0	1,700.0	4,373.0	4,373.0	3.7	87.5	-30.97	376.7	-226.1	439.3	348.2	91.17	4.819		
1,800.0	1,800.0	4,473.0	4,473.0	3.9	89.5	-30.97	376.7	-226.1	439.3	345.9	93.39	4.704		
1,900.0	1,900.0	4,573.0	4,573.0	4.2	91.5	-30.97	376.7	-226.1	439.3	343.7	95.62	4.595		
2,000.0	2,000.0	4,673.0	4,673.0	4.4	93.5	-30.97	376.7	-226.1	439.3	341.5	97.84	4.490		
2,100.0	2,100.0	4,773.0	4,773.0	4.6	95.5	-30.97	376.7	-226.1	439.3	339.3	100.07	4.390		
2,200.0	2,200.0	4,873.0	4,873.0	4.8	97.5	-30.97	376.7	-226.1	439.3	337.0	102.29	4.295		
2,300.0	2,300.0	4,973.0	4,973.0	5.1	99.5	-30.97	376.7	-226.1	439.3	334.8	104.52	4.203		
2,400.0	2,400.0	5,073.0	5,073.0	5.3	101.5	-30.97	376.7	-226.1	439.3	332.6	106.74	4.116		
2,500.0	2,500.0	5,173.0	5,173.0	5.5	103.5	-30.97	376.7	-226.1	439.3	330.4	108.97	4.032		
2,600.0	2,600.0	5,273.0	5,273.0	5.7	105.5	-30.97	376.7	-226.1	439.3	328.1	111.19	3.951		
2,700.0	2,700.0	5,373.0	5,373.0	6.0	107.5	-30.97	376.7	-226.1	439.3	325.9	113.42	3.874		
2,800.0	2,800.0	5,473.0	5,473.0	6.2	109.5	-30.97	376.7	-226.1	439.3	323.7	115.64	3.799		
2,900.0	2,900.0	5,573.0	5,573.0	6.4	111.5	-30.97	376.7	-226.1	439.3	321.5	117.87	3.727		
3,000.0	3,000.0	5,673.0	5,673.0	6.6	113.5	-30.97	376.7	-226.1	439.3	319.2	120.09	3.658 CC		
3,100.0	3,100.0	5,773.0	5,773.0	6.8	115.5	-154.58	376.7	-226.1	440.9	318.7	122.23	3.607 ES		
3,200.0	3,199.8	5,872.8	5,872.8	7.0	117.5	-154.83	376.7	-226.1	445.6	321.4	124.23	3.587 SF		
3,300.0	3,299.5	5,972.5	5,972.5	7.2	119.4	-155.23	376.7	-226.1	453.5	327.5	126.09	3.597		
3,400.0	3,398.7	6,071.7	6,071.7	7.4	121.4	-155.80	376.7	-226.1	464.4	336.5	127.97	3.629		
3,500.0	3,497.9	6,170.9	6,170.9	7.6	123.4	-156.42	376.7	-226.1	476.1	346.0	130.13	3.659		
3,600.0	3,597.1	6,270.1	6,270.1	7.8	125.4	-157.02	376.7	-226.1	487.8	355.5	132.29	3.687		
3,700.0	3,696.3	6,369.3	6,369.3	8.1	127.4	-157.59	376.7	-226.1	499.5	365.0	134.45	3.715		
3,800.0	3,795.5	6,468.5	6,468.5	8.3	129.4	-158.13	376.7	-226.1	511.3	374.7	136.61	3.742		
3,900.0	3,894.7	6,567.7	6,567.7	8.5	131.4	-158.65	376.7	-226.1	523.1	384.3	138.78	3.769		
4,000.0	3,993.9	6,666.9	6,666.9	8.8	133.3	-159.14	376.7	-226.1	535.0	394.0	140.95	3.795		
4,100.0	4,093.1	6,766.1	6,766.1	9.0	135.3	-159.62	376.7	-226.1	546.9	403.7	143.13	3.821		
4,200.0	4,192.2	6,865.2	6,865.2	9.3	137.3	-160.07	376.7	-226.1	558.8	413.5	145.30	3.846		
4,300.0	4,291.4	6,964.4	6,964.4	9.6	139.3	-160.50	376.7	-226.1	570.8	423.3	147.48	3.870		
4,400.0	4,390.6	7,063.6	7,063.6	9.8	141.3	-160.92	376.7	-226.1	582.8	433.1	149.66	3.894		
4,500.0	4,489.8	7,162.8	7,162.8	10.1	143.3	-161.32	376.7	-226.1	594.8	443.0	151.84	3.917		
4,600.0	4,589.0	7,262.0	7,262.0	10.4	145.2	-161.70	376.7	-226.1	606.9	452.8	154.02	3.940		
4,700.0	4,688.2	7,361.2	7,361.2	10.7	147.2	-162.07	376.7	-226.1	618.9	462.7	156.20	3.963		
4,800.0	4,787.4	7,460.4	7,460.4	10.9	149.2	-162.43	376.7	-226.1	631.1	472.7	158.38	3.984		
4,900.0	4,886.6	7,559.6	7,559.6	11.2	151.2	-162.77	376.7	-226.1	643.2	482.6	160.57	4.006		
5,000.0	4,985.8	7,658.8	7,658.8	11.5	153.2	-163.10	376.7	-226.1	655.3	492.6	162.75	4.027		
5,100.0	5,085.0	7,758.0	7,758.0	11.8	155.2	-163.41	376.7	-226.1	667.5	502.6	164.94	4.047		
5,200.0	5,184.2	7,790.0	7,790.0	12.1	155.8	-163.56	376.7	-226.1	682.6	516.5	166.09	4.110		
5,300.0	5,283.8	7,790.0	7,790.0	12.3	155.8	-163.71	376.7	-226.1	708.2	541.4	166.78	4.246		
5,400.0	5,383.6	7,790.0	7,790.0	12.5	155.8	-163.92	376.7	-226.1	743.3	576.0	167.28	4.443		
5,500.0	5,483.6	7,790.0	7,790.0	12.7	155.8	-164.19	376.7	-226.1	786.7	619.1	167.60	4.694		
5,600.0	5,583.6	7,790.0	7,790.0	12.9	155.8	-40.71	376.7	-226.1	838.0	670.2	167.84	4.993		
5,700.0	5,683.6	7,790.0	7,790.0	13.1	155.8	-40.71	376.7	-226.1	897.5	729.5	168.05	5.341		
5,800.0	5,783.6	7,790.0	7,790.0	13.3	155.8	-40.71	376.7	-226.1	963.8	795.5	168.26	5.728		

Company:	Synergy Resources	Local Co-ordinate Reference:	Well SRC Kiehn C-4CHZ
Project:	SEC.4-T4N-R68W	TVD Reference:	WELL @ 5077.0ft (RKB - 13')
Reference Site:	SRC Kiehn Pad Sec.4-T4N-R68W	MD Reference:	WELL @ 5077.0ft (RKB - 13')
Site Error:	0.0ft	North Reference:	True
Reference Well:	SRC Kiehn C-4CHZ	Survey Calculation Method:	Minimum Curvature
Well Error:	0.0ft	Output errors are at	2.00 sigma
Reference Wellbore	Wellbore #1	Database:	Landmark
Reference Design:	Plan #2 (4-25-14)	Offset TVD Reference:	Offset Datum

Offset Design												Offset Site Error:	0.0 ft
SRC Kiehn (Existing) Pad Sec.4-T4N-R68W - Huleatt #1 (P&A) - Wellbore #1 - Wellbore #1												Offset Well Error:	0.0 ft
Survey Program: 7000-UNKNOWN													
Reference		Offset		Semi Major Axis			Distance						
Measured Depth (ft)	Vertical Depth (ft)	Measured Depth (ft)	Vertical Depth (ft)	Reference (ft)	Offset (ft)	Highside Toolface (°)	Offset Wellbore Centre +N/-S (ft)	+E/-W (ft)	Between Centres (ft)	Between Ellipses (ft)	Minimum Separation (ft)	Separation Factor	Warning
10,300.0	7,000.0	7,000.0	7,000.0	68.9	140.0	-89.56	4,242.0	-452.1	924.3	715.5	208.79	4.427	
10,400.0	7,000.0	7,000.0	7,000.0	70.8	140.0	-89.56	4,242.0	-452.1	834.8	624.1	210.69	3.962	
10,500.0	7,000.0	7,000.0	7,000.0	72.7	140.0	-89.56	4,242.0	-452.1	748.0	535.4	212.60	3.519	
10,600.0	7,000.0	7,000.0	7,000.0	74.6	140.0	-89.56	4,242.0	-452.1	664.9	450.4	214.51	3.100	
10,700.0	7,000.0	7,000.0	7,000.0	76.5	140.0	-89.56	4,242.0	-452.1	587.1	370.7	216.41	2.713	
10,800.0	7,000.0	7,000.0	7,000.0	78.4	140.0	-89.56	4,242.0	-452.1	517.0	298.7	218.32	2.368	
10,900.0	7,000.0	7,000.0	7,000.0	80.3	140.0	-89.56	4,242.0	-452.1	458.2	237.9	220.24	2.080	
11,000.0	7,000.0	7,000.0	7,000.0	82.2	140.0	-89.56	4,242.0	-452.1	415.3	193.2	222.15	1.870	
11,100.0	7,000.0	7,000.0	7,000.0	84.1	140.0	-89.56	4,242.0	-452.1	393.8	169.7	224.07	1.758	
11,137.1	7,000.0	7,000.0	7,000.0	84.8	140.0	-89.56	4,242.0	-452.1	392.1	167.3	224.78	1.744	CC, ES, SF
11,200.0	7,000.0	7,000.0	7,000.0	86.0	140.0	-89.56	4,242.0	-452.1	397.1	171.1	225.98	1.757	
11,293.3	7,000.0	7,000.0	7,000.0	87.8	140.0	-89.56	4,242.0	-452.1	422.0	194.3	227.77	1.853	

Company:	Synergy Resources	Local Co-ordinate Reference:	Well SRC Kiehn C-4CHZ
Project:	SEC.4-T4N-R68W	TVD Reference:	WELL @ 5077.0ft (RKB - 13')
Reference Site:	SRC Kiehn Pad Sec.4-T4N-R68W	MD Reference:	WELL @ 5077.0ft (RKB - 13')
Site Error:	0.0ft	North Reference:	True
Reference Well:	SRC Kiehn C-4CHZ	Survey Calculation Method:	Minimum Curvature
Well Error:	0.0ft	Output errors are at	2.00 sigma
Reference Wellbore	Wellbore #1	Database:	Landmark
Reference Design:	Plan #2 (4-25-14)	Offset TVD Reference:	Offset Datum

Offset Design												Offset Site Error:	0.0 ft
SRC Kiehn (Existing) Pad Sec.4-T4N-R68W - Saulcy #4-1 (P&A) - Wellbore #1 - Wellbore #1												Offset Well Error:	0.0 ft
Survey Program: 8163-UNKNOWN													
Reference		Offset		Semi Major Axis			Distance						
Measured Depth (ft)	Vertical Depth (ft)	Measured Depth (ft)	Vertical Depth (ft)	Reference (ft)	Offset (ft)	Highside Toolface (°)	Offset Wellbore Centre +N/-S (ft)	+E/-W (ft)	Between Centres (ft)	Between Ellipses (ft)	Minimum Separation (ft)	Separation Factor	Warning
10,300.0	7,000.0	7,043.0	7,043.0	68.9	140.9	-90.00	4,289.4	-474.4	976.6	766.9	209.66	4.658	
10,400.0	7,000.0	7,043.0	7,043.0	70.8	140.9	-90.00	4,289.4	-474.4	886.9	675.3	211.57	4.192	
10,500.0	7,000.0	7,043.0	7,043.0	72.7	140.9	-90.00	4,289.4	-474.4	799.6	586.1	213.47	3.746	
10,600.0	7,000.0	7,043.0	7,043.0	74.6	140.9	-90.00	4,289.4	-474.4	715.7	500.3	215.38	3.323	
10,700.0	7,000.0	7,043.0	7,043.0	76.5	140.9	-90.00	4,289.4	-474.4	636.5	419.2	217.29	2.929	
10,800.0	7,000.0	7,043.0	7,043.0	78.4	140.9	-90.00	4,289.4	-474.4	563.8	344.6	219.20	2.572	
10,900.0	7,000.0	7,043.0	7,043.0	80.3	140.9	-90.00	4,289.4	-474.4	500.8	279.7	221.11	2.265	
11,000.0	7,000.0	7,043.0	7,043.0	82.2	140.9	-90.00	4,289.4	-474.4	451.2	228.2	223.02	2.023	
11,100.0	7,000.0	7,043.0	7,043.0	84.1	140.9	-90.00	4,289.4	-474.4	420.1	195.1	224.94	1.867	
11,185.8	7,000.0	7,043.0	7,043.0	85.8	140.9	-90.00	4,289.4	-474.4	411.2	184.6	226.58	1.815 CC	
11,200.0	7,000.0	7,043.0	7,043.0	86.0	140.9	-90.00	4,289.4	-474.4	411.5	184.6	226.86	1.814 ES, SF	
11,293.3	7,000.0	7,043.0	7,043.0	87.8	140.9	-90.00	4,289.4	-474.4	425.0	196.4	228.65	1.859	

Offset Design SRC Kiehn Pad Sec.4-T4N-R68W - SRC Kiehn 31-4CHZ - Wellbore #1 - Plan #2 (4-25-14)													Offset Site Error: 0.0 ft	
Survey Program: 0-MWD													Offset Well Error: 0.0 ft	
Reference		Offset		Semi Major Axis			Distance							
Measured Depth	Vertical Depth	Measured Depth	Vertical Depth	Reference	Offset	Highside Toolface	Offset Wellbore Centre		Between Centres	Between Ellipses	Minimum Separation	Separation Factor	Warning	
(ft)	(ft)	(ft)	(ft)	(ft)	(ft)	(°)	+N/-S (ft)	+E/-W (ft)	(ft)	(ft)	(ft)			
0.0	0.0	0.0	0.0	0.0	0.0	-90.93	-1.5	-90.0	90.1					
100.0	100.0	100.0	100.0	0.1	0.1	-90.93	-1.5	-90.0	90.1	89.8	0.22	400.682		
200.0	200.0	200.0	200.0	0.3	0.3	-90.93	-1.5	-90.0	90.1	89.4	0.67	133.561		
300.0	300.0	300.0	300.0	0.6	0.6	-90.93	-1.5	-90.0	90.1	88.9	1.12	80.136		
400.0	400.0	400.0	400.0	0.8	0.8	-90.93	-1.5	-90.0	90.1	88.5	1.57	57.240		
500.0	500.0	500.0	500.0	1.0	1.0	-90.93	-1.5	-90.0	90.1	88.0	2.02	44.520		
600.0	600.0	600.0	600.0	1.2	1.2	-90.93	-1.5	-90.0	90.1	87.6	2.47	36.426		
700.0	700.0	700.0	700.0	1.5	1.5	-90.93	-1.5	-90.0	90.1	87.1	2.92	30.822		
800.0	800.0	800.0	800.0	1.7	1.7	-90.93	-1.5	-90.0	90.1	86.7	3.37	26.712		
900.0	900.0	900.0	900.0	1.9	1.9	-90.93	-1.5	-90.0	90.1	86.2	3.82	23.570		
1,000.0	1,000.0	1,000.0	1,000.0	2.1	2.1	-90.93	-1.5	-90.0	90.1	85.8	4.27	21.089		
1,100.0	1,100.0	1,100.0	1,100.0	2.4	2.4	-90.93	-1.5	-90.0	90.1	85.3	4.72	19.080		
1,200.0	1,200.0	1,200.0	1,200.0	2.6	2.6	-90.93	-1.5	-90.0	90.1	84.9	5.17	17.421		
1,300.0	1,300.0	1,300.0	1,300.0	2.8	2.8	-90.93	-1.5	-90.0	90.1	84.4	5.62	16.027		
1,400.0	1,400.0	1,400.0	1,400.0	3.0	3.0	-90.93	-1.5	-90.0	90.1	84.0	6.07	14.840		
1,500.0	1,500.0	1,500.0	1,500.0	3.3	3.3	-90.93	-1.5	-90.0	90.1	83.5	6.52	13.817		
1,600.0	1,600.0	1,600.0	1,600.0	3.5	3.5	-90.93	-1.5	-90.0	90.1	83.1	6.97	12.925 CC, ES		
1,700.0	1,700.0	1,697.0	1,697.0	3.7	3.7	-91.18	-1.9	-91.6	91.7	84.3	7.39	12.403		
1,800.0	1,800.0	1,793.8	1,793.6	3.9	3.9	-91.88	-3.2	-96.4	96.6	88.8	7.81	12.377		
1,900.0	1,900.0	1,890.1	1,889.6	4.2	4.1	-92.89	-5.3	-104.2	104.9	96.6	8.23	12.744		
2,000.0	2,000.0	1,985.8	1,984.7	4.4	4.3	-94.07	-8.2	-115.1	116.4	107.7	8.66	13.437		
2,100.0	2,100.0	2,084.1	2,081.9	4.6	4.5	-95.23	-11.8	-128.4	130.2	121.1	9.12	14.281		
2,200.0	2,200.0	2,183.1	2,179.9	4.8	4.8	-96.18	-15.4	-141.9	144.1	134.5	9.59	15.034		
2,300.0	2,300.0	2,282.1	2,278.0	5.1	5.0	-96.97	-19.0	-155.3	158.0	148.0	10.06	15.706		
2,400.0	2,400.0	2,381.1	2,376.0	5.3	5.3	-97.62	-22.6	-168.8	172.0	161.4	10.55	16.306		
2,500.0	2,500.0	2,480.1	2,474.0	5.5	5.6	-98.18	-26.2	-182.3	186.0	174.9	11.04	16.844		
2,600.0	2,600.0	2,579.1	2,572.0	5.7	5.9	-98.66	-29.8	-195.7	200.0	188.4	11.54	17.329		
2,700.0	2,700.0	2,678.1	2,670.0	6.0	6.2	-99.08	-33.4	-209.2	214.0	201.9	12.04	17.767		
2,800.0	2,800.0	2,777.1	2,768.0	6.2	6.5	-99.45	-37.1	-222.7	228.0	215.4	12.55	18.165		
2,900.0	2,900.0	2,876.1	2,866.1	6.4	6.8	-99.77	-40.7	-236.1	242.0	228.9	13.06	18.526		
3,000.0	3,000.0	2,975.1	2,964.1	6.6	7.1	-100.06	-44.3	-249.6	256.0	242.4	13.58	18.857		
3,100.0	3,100.0	3,073.9	3,061.9	6.8	7.4	136.20	-47.9	-263.0	271.3	257.9	13.43	20.195		
3,200.0	3,199.8	3,172.3	3,159.3	7.0	7.7	136.43	-51.5	-276.4	289.1	275.3	13.82	20.916		
3,300.0	3,299.5	3,270.1	3,256.1	7.2	8.0	137.03	-55.1	-289.7	309.4	295.2	14.20	21.783		
3,400.0	3,398.7	3,367.3	3,352.3	7.4	8.4	137.98	-58.6	-302.9	332.1	317.5	14.59	22.758		
3,500.0	3,497.9	3,464.3	3,448.4	7.6	8.7	139.07	-62.1	-316.1	355.5	340.5	15.01	23.677		
3,600.0	3,597.1	3,561.3	3,544.4	7.8	9.0	140.02	-65.7	-329.3	379.0	363.6	15.44	24.542		
3,700.0	3,696.3	3,658.3	3,640.5	8.1	9.3	140.87	-69.2	-342.5	402.6	386.7	15.88	25.355		
3,800.0	3,795.5	3,755.3	3,736.5	8.3	9.6	141.62	-72.8	-355.7	426.3	409.9	16.32	26.120		
3,900.0	3,894.7	3,852.4	3,832.6	8.5	10.0	142.29	-76.3	-368.9	450.0	433.2	16.76	26.841		
4,000.0	3,993.9	3,949.4	3,928.6	8.8	10.3	142.89	-79.9	-382.1	473.8	456.5	17.22	27.519		
4,100.0	4,093.1	4,046.4	4,024.7	9.0	10.6	143.44	-83.4	-395.3	497.6	479.9	17.67	28.159		
4,200.0	4,192.2	4,143.4	4,120.8	9.3	10.9	143.93	-86.9	-408.5	521.4	503.3	18.13	28.763		
4,300.0	4,291.4	4,240.4	4,216.8	9.6	11.3	144.39	-90.5	-421.7	545.3	526.7	18.59	29.333		
4,400.0	4,390.6	4,337.4	4,312.9	9.8	11.6	144.80	-94.0	-434.9	569.3	550.2	19.06	29.872		
4,500.0	4,489.8	4,434.5	4,408.9	10.1	11.9	145.18	-97.6	-448.1	593.2	573.7	19.52	30.382		
4,600.0	4,589.0	4,531.5	4,505.0	10.4	12.3	145.54	-101.1	-461.3	617.2	597.2	20.00	30.865		
4,700.0	4,688.2	4,628.5	4,601.0	10.7	12.6	145.86	-104.7	-474.5	641.2	620.7	20.47	31.323		
4,800.0	4,787.4	4,725.5	4,697.1	10.9	12.9	146.16	-108.2	-487.7	665.2	644.2	20.95	31.757		
4,900.0	4,886.6	4,822.5	4,793.1	11.2	13.3	146.44	-111.7	-500.9	689.2	667.8	21.42	32.170		
5,000.0	4,985.8	4,919.5	4,889.2	11.5	13.6	146.71	-115.3	-514.1	713.2	691.3	21.90	32.562		
5,100.0	5,085.0	5,016.6	4,985.2	11.8	13.9	146.95	-118.8	-527.2	737.3	714.9	22.39	32.935		

COMPASS 2003.21 Build 46

SRC Kiehn Pad Sec.4-T4N-R68W - SRC Kiehn 31-4CHZ - Wellbore #1 - Plan #2 (4-25-14)													Offset Site Error:	0.0 ft
Survey Program: 0-MWD													Offset Well Error:	0.0 ft
Reference		Offset		Semi Major Axis			Distance							
Measured Depth (ft)	Vertical Depth (ft)	Measured Depth (ft)	Vertical Depth (ft)	Reference (ft)	Offset (ft)	Highside Toolface (°)	Offset Wellbore Centre +N/-S (ft)	+E/-W (ft)	Between Centres (ft)	Between Ellipses (ft)	Minimum Separation (ft)	Separation Factor	Warning	
5,200.0	5,184.2	5,113.7	5,081.3	12.1	14.3	147.29	-122.4	-540.5	761.0	738.1	22.90	33.231		
5,300.0	5,283.8	5,211.4	5,178.1	12.3	14.6	147.60	-125.9	-553.7	782.3	758.9	23.42	33.396		
5,400.0	5,383.6	5,309.7	5,275.4	12.5	14.9	147.74	-129.5	-567.1	800.6	776.7	23.92	33.465		
5,500.0	5,483.6	5,408.4	5,373.2	12.7	15.3	147.71	-133.1	-580.5	816.1	791.7	24.40	33.447		
5,600.0	5,583.6	5,507.4	5,471.2	12.9	15.6	-89.01	-136.7	-594.0	829.7	804.7	24.93	33.276		
5,700.0	5,683.6	5,606.4	5,569.2	13.1	16.0	-89.27	-140.4	-607.5	843.2	817.8	25.39	33.212		
5,800.0	5,783.6	5,705.4	5,667.2	13.3	16.3	-89.53	-144.0	-620.9	856.8	831.0	25.85	33.151		
5,900.0	5,883.6	5,833.2	5,793.9	13.5	16.7	-89.81	-148.2	-636.7	869.2	842.9	26.34	33.007		
6,000.0	5,983.6	5,974.4	5,934.6	13.7	17.0	-90.01	-151.2	-647.9	877.2	850.4	26.81	32.719		
6,100.0	6,083.6	6,116.5	6,076.6	13.9	17.2	-90.09	-152.4	-652.5	880.4	853.1	27.27	32.278		
6,200.0	6,183.6	6,223.4	6,183.6	14.1	17.4	-90.09	-152.5	-652.5	880.4	852.8	27.69	31.801		
6,300.0	6,283.6	6,323.4	6,283.6	14.3	17.5	-90.09	-152.5	-652.5	880.4	852.4	28.09	31.345		
6,400.0	6,383.2	6,416.2	6,376.1	14.5	17.7	-86.39	-146.5	-652.9	880.4	852.1	28.35	31.061		
6,500.0	6,481.0	6,509.0	6,467.1	14.7	17.8	-86.49	-128.7	-654.1	880.3	851.7	28.62	30.759		
6,600.0	6,574.9	6,602.1	6,555.3	14.8	17.9	-86.65	-99.1	-656.0	880.2	851.3	28.85	30.507		
6,700.0	6,663.1	6,695.5	6,639.2	14.9	18.0	-86.87	-58.3	-658.7	880.0	850.9	29.10	30.243		
6,800.0	6,744.0	6,789.4	6,717.4	15.0	18.1	-87.15	-6.6	-662.1	879.8	850.4	29.43	29.892		
6,900.0	6,815.9	6,883.8	6,788.6	15.1	18.2	-87.49	55.2	-666.2	879.6	849.6	29.94	29.378		
7,000.0	6,877.4	6,978.9	6,851.4	15.3	18.4	-87.87	126.3	-670.8	879.3	848.6	30.69	28.648		
7,100.0	6,927.4	7,074.7	6,904.6	15.8	18.7	-88.29	205.8	-676.0	879.1	847.4	31.76	27.678		
7,200.0	6,964.9	7,171.4	6,947.0	16.6	19.1	-88.75	292.4	-681.7	879.0	845.8	33.18	26.493		
7,300.0	6,989.1	7,269.0	6,977.6	17.5	19.7	-89.23	384.8	-687.8	878.9	843.9	34.94	25.157		
7,400.0	6,999.6	7,367.6	6,995.4	18.6	20.5	-89.73	481.4	-694.1	878.8	841.8	37.00	23.749		
7,415.0	7,000.0	7,382.4	6,996.9	18.8	20.6	-89.80	496.2	-695.1	878.8	841.5	37.34	23.533		
7,500.0	7,000.0	7,467.3	7,000.0	19.8	21.4	-90.00	580.8	-700.6	878.8	839.5	39.34	22.342		
7,600.0	7,000.0	7,567.3	7,000.0	21.1	22.6	-90.00	680.5	-707.2	878.9	836.9	41.91	20.970		
7,700.0	7,000.0	7,667.3	7,000.0	22.5	23.8	-90.00	780.3	-713.7	878.9	834.2	44.67	19.676		
7,800.0	7,000.0	7,767.3	7,000.0	23.9	25.2	-90.00	880.1	-720.3	878.9	831.3	47.58	18.470		
7,900.0	7,000.0	7,867.3	7,000.0	25.5	26.6	-90.00	979.9	-726.8	878.9	828.3	50.63	17.358		
8,000.0	7,000.0	7,967.3	7,000.0	27.1	28.1	-90.00	1,079.7	-733.4	878.9	825.2	53.79	16.340		
8,100.0	7,000.0	8,067.3	7,000.0	28.7	29.7	-90.00	1,179.5	-739.9	879.0	821.9	57.04	15.409		
8,200.0	7,000.0	8,167.3	7,000.0	30.4	31.2	-90.00	1,279.3	-746.4	879.0	818.6	60.37	14.560		
8,300.0	7,000.0	8,267.3	7,000.0	32.1	32.9	-90.00	1,379.0	-753.0	879.0	815.2	63.76	13.786		
8,400.0	7,000.0	8,367.3	7,000.0	33.8	34.5	-90.00	1,478.8	-759.5	879.0	811.8	67.21	13.080		
8,500.0	7,000.0	8,467.3	7,000.0	35.5	36.2	-90.00	1,578.6	-766.1	879.1	808.4	70.70	12.434		
8,600.0	7,000.0	8,567.3	7,000.0	37.3	38.0	-90.00	1,678.4	-772.6	879.1	804.8	74.23	11.842		
8,700.0	7,000.0	8,667.3	7,000.0	39.1	39.7	-90.00	1,778.2	-779.2	879.1	801.3	77.80	11.300		
8,800.0	7,000.0	8,767.3	7,000.0	40.9	41.4	-90.00	1,878.0	-785.7	879.1	797.7	81.40	10.800		
8,900.0	7,000.0	8,867.3	7,000.0	42.7	43.2	-90.00	1,977.8	-792.2	879.1	794.1	85.02	10.340		
9,000.0	7,000.0	8,967.3	7,000.0	44.5	45.0	-90.00	2,077.5	-798.8	879.2	790.5	88.67	9.915		
9,100.0	7,000.0	9,067.3	7,000.0	46.4	46.8	-90.00	2,177.3	-805.3	879.2	786.9	92.34	9.522		
9,200.0	7,000.0	9,167.3	7,000.0	48.2	48.6	-90.00	2,277.1	-811.9	879.2	783.2	96.02	9.156		
9,300.0	7,000.0	9,267.3	7,000.0	50.1	50.4	-90.00	2,376.9	-818.4	879.2	779.5	99.72	8.817		
9,400.0	7,000.0	9,367.3	7,000.0	51.9	52.3	-90.00	2,476.7	-825.0	879.3	775.8	103.44	8.500		
9,500.0	7,000.0	9,467.3	7,000.0	53.8	54.1	-90.00	2,576.5	-831.5	879.3	772.1	107.17	8.205		
9,600.0	7,000.0	9,567.3	7,000.0	55.7	56.0	-90.00	2,676.3	-838.1	879.3	768.4	110.91	7.928		
9,700.0	7,000.0	9,667.3	7,000.0	57.5	57.8	-90.00	2,776.0	-844.6	879.3	764.7	114.66	7.669		
9,800.0	7,000.0	9,767.3	7,000.0	59.4	59.7	-90.00	2,875.8	-851.1	879.3	760.9	118.42	7.426		
9,900.0	7,000.0	9,867.3	7,000.0	61.3	61.5	-90.00	2,975.6	-857.7	879.4	757.2	122.19	7.197		
10,000.0	7,000.0	9,967.3	7,000.0	63.2	63.4	-90.00	3,075.4	-864.2	879.4	753.4	125.96	6.981		
10,100.0	7,000.0	10,067.3	7,000.0	65.1	65.3	-90.00	3,175.2	-870.8	879.4	749.7	129.75	6.778		
10,200.0	7,000.0	10,167.3	7,000.0	67.0	67.2	-90.00	3,275.0	-877.3	879.4	745.9	133.54	6.586		

Company:	Synergy Resources	Local Co-ordinate Reference:	Well SRC Kiehn C-4CHZ
Project:	SEC.4-T4N-R68W	TVD Reference:	WELL @ 5077.0ft (RKB - 13')
Reference Site:	SRC Kiehn Pad Sec.4-T4N-R68W	MD Reference:	WELL @ 5077.0ft (RKB - 13')
Site Error:	0.0ft	North Reference:	True
Reference Well:	SRC Kiehn C-4CHZ	Survey Calculation Method:	Minimum Curvature
Well Error:	0.0ft	Output errors are at	2.00 sigma
Reference Wellbore	Wellbore #1	Database:	Landmark
Reference Design:	Plan #2 (4-25-14)	Offset TVD Reference:	Offset Datum

Offset Design SRC Kiehn Pad Sec.4-T4N-R68W - SRC Kiehn 31-4CHZ - Wellbore #1 - Plan #2 (4-25-14)												Offset Site Error:	0.0 ft
Survey Program: 0-MWD												Offset Well Error:	0.0 ft
Reference		Offset		Semi Major Axis			Distance						
Measured Depth (ft)	Vertical Depth (ft)	Measured Depth (ft)	Vertical Depth (ft)	Reference (ft)	Offset (ft)	Highside Toolface (°)	Offset Wellbore Centre +N/-S (ft)	+E/-W (ft)	Between Centres (ft)	Between Ellipses (ft)	Minimum Separation (ft)	Separation Factor	Warning
10,300.0	7,000.0	10,267.3	7,000.0	68.9	69.0	-90.00	3,374.8	-883.9	879.5	742.1	137.33	6.404	
10,400.0	7,000.0	10,367.3	7,000.0	70.8	70.9	-90.00	3,474.5	-890.4	879.5	738.3	141.13	6.232	
10,500.0	7,000.0	10,467.3	7,000.0	72.7	72.8	-90.00	3,574.3	-897.0	879.5	734.6	144.94	6.068	
10,600.0	7,000.0	10,567.3	7,000.0	74.6	74.7	-90.00	3,674.1	-903.5	879.5	730.8	148.75	5.913	
10,700.0	7,000.0	10,667.3	7,000.0	76.5	76.6	-90.00	3,773.9	-910.0	879.5	727.0	152.57	5.765	
10,800.0	7,000.0	10,767.3	7,000.0	78.4	78.5	-90.00	3,873.7	-916.6	879.6	723.2	156.38	5.624	
10,900.0	7,000.0	10,867.3	7,000.0	80.3	80.4	-90.00	3,973.5	-923.1	879.6	719.4	160.21	5.490	
11,000.0	7,000.0	10,967.3	7,000.0	82.2	82.3	-90.00	4,073.3	-929.7	879.6	715.6	164.03	5.362	
11,100.0	7,000.0	11,067.3	7,000.0	84.1	84.2	-90.00	4,173.0	-936.2	879.6	711.8	167.86	5.240	
11,200.0	7,000.0	11,167.3	7,000.0	86.0	86.1	-90.00	4,272.8	-942.8	879.7	708.0	171.70	5.123	
11,293.3	7,000.0	11,260.5	7,000.0	87.8	87.9	-90.00	4,365.9	-948.9	879.7	704.4	175.27	5.019 SF	

Company:	Synergy Resources	Local Co-ordinate Reference:	Well SRC Kiehn C-4CHZ
Project:	SEC.4-T4N-R68W	TVD Reference:	WELL @ 5077.0ft (RKB - 13')
Reference Site:	SRC Kiehn Pad Sec.4-T4N-R68W	MD Reference:	WELL @ 5077.0ft (RKB - 13')
Site Error:	0.0ft	North Reference:	True
Reference Well:	SRC Kiehn C-4CHZ	Survey Calculation Method:	Minimum Curvature
Well Error:	0.0ft	Output errors are at	2.00 sigma
Reference Wellbore	Wellbore #1	Database:	Landmark
Reference Design:	Plan #2 (4-25-14)	Offset TVD Reference:	Offset Datum

Offset Design SRC Kiehn Pad Sec.4-T4N-R68W - SRC Kiehn 32-4CHZ - Wellbore #1 - Plan #2 (4-25-14)													Offset Site Error:	0.0 ft
Survey Program: 0-MWD													Offset Well Error:	0.0 ft
Measured Depth (ft)	Vertical Depth (ft)	Measured Depth (ft)	Vertical Depth (ft)	Reference (ft)	Offset (ft)	Semi Major Axis Highside Toolface (°)	Offset Wellbore Centre +N/-S (ft)	+E/-W (ft)	Between Centres (ft)	Between Ellipses (ft)	Minimum Separation (ft)	Separation Factor	Warning	
0.0	0.0	0.0	0.0	0.0	0.0	-90.92	-0.7	-45.2	45.2					
100.0	100.0	100.0	100.0	0.1	0.1	-90.92	-0.7	-45.2	45.2	44.9	0.22	200.961		
200.0	200.0	200.0	200.0	0.3	0.3	-90.92	-0.7	-45.2	45.2	44.5	0.67	66.987		
300.0	300.0	300.0	300.0	0.6	0.6	-90.92	-0.7	-45.2	45.2	44.0	1.12	40.192		
400.0	400.0	400.0	400.0	0.8	0.8	-90.92	-0.7	-45.2	45.2	43.6	1.57	28.709		
500.0	500.0	500.0	500.0	1.0	1.0	-90.92	-0.7	-45.2	45.2	43.1	2.02	22.329		
600.0	600.0	600.0	600.0	1.2	1.2	-90.92	-0.7	-45.2	45.2	42.7	2.47	18.269		
700.0	700.0	700.0	700.0	1.5	1.5	-90.92	-0.7	-45.2	45.2	42.2	2.92	15.459		
800.0	800.0	800.0	800.0	1.7	1.7	-90.92	-0.7	-45.2	45.2	41.8	3.37	13.397		
900.0	900.0	900.0	900.0	1.9	1.9	-90.92	-0.7	-45.2	45.2	41.3	3.82	11.821		
1,000.0	1,000.0	1,000.0	1,000.0	2.1	2.1	-90.92	-0.7	-45.2	45.2	40.9	4.27	10.577		
1,100.0	1,100.0	1,100.0	1,100.0	2.4	2.4	-90.92	-0.7	-45.2	45.2	40.4	4.72	9.570		
1,200.0	1,200.0	1,200.0	1,200.0	2.6	2.6	-90.92	-0.7	-45.2	45.2	40.0	5.17	8.737		
1,300.0	1,300.0	1,300.0	1,300.0	2.8	2.8	-90.92	-0.7	-45.2	45.2	39.6	5.62	8.038		
1,400.0	1,400.0	1,400.0	1,400.0	3.0	3.0	-90.92	-0.7	-45.2	45.2	39.1	6.07	7.443		
1,500.0	1,500.0	1,500.0	1,500.0	3.3	3.3	-90.92	-0.7	-45.2	45.2	38.7	6.52	6.930		
1,600.0	1,600.0	1,600.0	1,600.0	3.5	3.5	-90.92	-0.7	-45.2	45.2	38.2	6.97	6.483		
1,700.0	1,700.0	1,700.0	1,700.0	3.7	3.7	-90.92	-0.7	-45.2	45.2	37.8	7.42	6.090		
1,800.0	1,800.0	1,800.0	1,800.0	3.9	3.9	-90.92	-0.7	-45.2	45.2	37.3	7.87	5.742		
1,900.0	1,900.0	1,900.0	1,900.0	4.2	4.2	-90.92	-0.7	-45.2	45.2	36.9	8.32	5.431		
2,000.0	2,000.0	2,000.0	2,000.0	4.4	4.4	-90.92	-0.7	-45.2	45.2	36.4	8.77	5.153 CC, ES		
2,100.0	2,100.0	2,098.8	2,098.8	4.6	4.6	-92.35	-1.9	-46.4	46.5	37.3	9.19	5.056		
2,200.0	2,200.0	2,197.7	2,197.6	4.8	4.8	-96.10	-5.3	-50.0	50.4	40.8	9.59	5.252		
2,300.0	2,300.0	2,297.5	2,297.2	5.1	4.9	-99.90	-9.5	-54.4	55.3	45.3	10.00	5.529		
2,400.0	2,400.0	2,397.4	2,396.8	5.3	5.1	-103.06	-13.6	-58.8	60.4	50.0	10.42	5.801		
2,500.0	2,500.0	2,497.2	2,496.5	5.5	5.3	-105.73	-17.8	-63.2	65.7	54.9	10.84	6.063		
2,600.0	2,600.0	2,597.0	2,596.1	5.7	5.5	-107.99	-21.9	-67.6	71.1	59.9	11.27	6.314		
2,700.0	2,700.0	2,696.8	2,695.8	6.0	5.7	-109.93	-26.1	-71.9	76.6	64.9	11.70	6.552		
2,800.0	2,800.0	2,796.6	2,795.4	6.2	6.0	-111.61	-30.2	-76.3	82.2	70.1	12.13	6.778		
2,900.0	2,900.0	2,896.4	2,895.0	6.4	6.2	-113.08	-34.4	-80.7	87.9	75.3	12.57	6.991		
3,000.0	3,000.0	2,996.3	2,994.7	6.6	6.4	-114.37	-38.5	-85.1	93.5	80.5	13.01	7.193		
3,100.0	3,100.0	3,096.0	3,094.2	6.8	6.6	121.71	-42.7	-89.4	100.2	86.8	13.34	7.511		
3,200.0	3,199.8	3,195.6	3,193.7	7.0	6.8	122.89	-46.8	-93.8	108.7	95.0	13.72	7.921		
3,300.0	3,299.5	3,295.0	3,292.8	7.2	7.0	125.24	-50.9	-98.2	119.2	105.1	14.10	8.453		
3,400.0	3,398.7	3,393.9	3,391.6	7.4	7.3	128.36	-55.1	-102.5	131.9	117.4	14.49	9.104		
3,500.0	3,497.9	3,492.7	3,490.2	7.6	7.5	131.25	-59.2	-106.9	145.5	130.6	14.90	9.764		
3,600.0	3,597.1	3,591.6	3,588.9	7.8	7.7	133.64	-63.3	-111.2	159.3	144.0	15.31	10.403		
3,700.0	3,696.3	3,690.4	3,687.5	8.1	8.0	135.65	-67.4	-115.5	173.4	157.7	15.74	11.018		
3,800.0	3,795.5	3,789.2	3,786.2	8.3	8.2	137.36	-71.5	-119.9	187.6	171.5	16.16	11.608		
3,900.0	3,894.7	3,888.1	3,884.8	8.5	8.4	138.82	-75.6	-124.2	202.0	185.4	16.60	12.173		
4,000.0	3,993.9	3,986.9	3,983.5	8.8	8.6	140.09	-79.7	-128.5	216.5	199.5	17.03	12.712		
4,100.0	4,093.1	4,085.7	4,082.1	9.0	8.9	141.21	-83.8	-132.9	231.1	213.7	17.48	13.226		
4,200.0	4,192.2	4,184.6	4,180.8	9.3	9.1	142.18	-87.9	-137.2	245.8	227.9	17.92	13.717		
4,300.0	4,291.4	4,283.4	4,279.4	9.6	9.4	143.05	-92.0	-141.5	260.5	242.2	18.37	14.185		
4,400.0	4,390.6	4,382.2	4,378.1	9.8	9.6	143.83	-96.1	-145.9	275.3	256.5	18.82	14.630		
4,500.0	4,489.8	4,481.1	4,476.8	10.1	9.8	144.52	-100.2	-150.2	290.2	270.9	19.27	15.055		
4,600.0	4,589.0	4,579.9	4,575.4	10.4	10.1	145.15	-104.3	-154.5	305.0	285.3	19.73	15.461		
4,700.0	4,688.2	4,678.8	4,674.1	10.7	10.3	145.72	-108.5	-158.9	319.9	299.7	20.19	15.848		
4,800.0	4,787.4	4,777.6	4,772.7	10.9	10.5	146.24	-112.6	-163.2	334.9	314.2	20.65	16.217		
4,900.0	4,886.6	4,876.4	4,871.4	11.2	10.8	146.72	-116.7	-167.6	349.8	328.7	21.11	16.570		
5,000.0	4,985.8	4,975.3	4,970.0	11.5	11.0	147.15	-120.8	-171.9	364.8	343.2	21.58	16.907		
5,100.0	5,085.0	5,074.1	5,068.7	11.8	11.3	147.56	-124.9	-176.2	379.8	357.8	22.04	17.229		

CC - Min centre to center distance or convergent point, SF - min separation factor, ES - min ellipse separation

Company:	Synergy Resources	Local Co-ordinate Reference:	Well SRC Kiehn C-4CHZ
Project:	SEC.4-T4N-R68W	TVD Reference:	WELL @ 5077.0ft (RKB - 13')
Reference Site:	SRC Kiehn Pad Sec.4-T4N-R68W	MD Reference:	WELL @ 5077.0ft (RKB - 13')
Site Error:	0.0ft	North Reference:	True
Reference Well:	SRC Kiehn C-4CHZ	Survey Calculation Method:	Minimum Curvature
Well Error:	0.0ft	Output errors are at	2.00 sigma
Reference Wellbore	Wellbore #1	Database:	Landmark
Reference Design:	Plan #2 (4-25-14)	Offset TVD Reference:	Offset Datum

Offset Design												Offset Site Error:	0.0 ft
Survey Program: 0-MWD												Offset Well Error:	0.0 ft
Reference		Offset		Semi Major Axis			Distance						
Measured Depth (ft)	Vertical Depth (ft)	Measured Depth (ft)	Vertical Depth (ft)	Reference (ft)	Offset (ft)	Highside Toolface (°)	Offset Wellbore Centre +N/-S (ft)	+E/-W (ft)	Between Centres (ft)	Between Ellipses (ft)	Minimum Separation (ft)	Separation Factor	Warning
5,200.0	5,184.2	5,173.0	5,167.4	12.1	11.5	147.97	-129.0	-180.6	394.5	371.9	22.53	17.508	
5,300.0	5,283.8	5,272.2	5,266.5	12.3	11.7	148.19	-133.1	-184.9	406.6	383.6	23.02	17.666	
5,400.0	5,383.6	5,371.8	5,365.9	12.5	12.0	148.11	-137.3	-189.3	415.8	392.3	23.48	17.707	
5,500.0	5,483.6	5,471.6	5,465.4	12.7	12.2	147.77	-141.4	-193.7	422.0	398.1	23.93	17.639	
5,600.0	5,583.6	5,571.4	5,565.1	12.9	12.5	-89.27	-145.6	-198.0	426.4	402.0	24.34	17.516	
5,700.0	5,683.6	5,675.8	5,669.3	13.1	12.7	-89.82	-149.7	-202.4	430.5	405.7	24.79	17.366	
5,800.0	5,783.6	5,788.1	5,781.5	13.3	13.0	-90.09	-151.7	-204.5	432.4	407.2	25.23	17.139	
5,900.0	5,883.6	5,890.1	5,883.6	13.5	13.2	-90.10	-151.7	-204.6	432.5	406.8	25.64	16.864	
6,000.0	5,983.6	5,990.1	5,983.6	13.7	13.3	-90.10	-151.7	-204.6	432.5	406.4	26.05	16.600	
6,100.0	6,083.6	6,090.1	6,083.6	13.9	13.5	-90.10	-151.7	-204.6	432.5	406.0	26.46	16.344	
6,200.0	6,183.6	6,190.1	6,183.6	14.1	13.7	-90.10	-151.7	-204.6	432.5	405.6	26.87	16.095	
6,300.0	6,283.6	6,290.1	6,283.6	14.3	13.9	-90.10	-151.7	-204.6	432.5	405.2	27.28	15.853	
6,400.0	6,383.2	6,385.8	6,379.0	14.5	14.1	-86.39	-145.4	-205.0	432.5	404.9	27.65	15.643	
6,500.0	6,481.0	6,481.6	6,472.8	14.7	14.2	-86.49	-126.4	-206.5	432.7	404.8	27.93	15.490	
6,600.0	6,574.9	6,577.5	6,563.3	14.8	14.4	-86.66	-95.1	-208.9	433.0	404.8	28.18	15.365	
6,700.0	6,663.1	6,673.6	6,649.0	14.9	14.5	-86.89	-51.9	-212.2	433.4	404.9	28.44	15.236	
6,800.0	6,744.0	6,770.0	6,728.4	15.0	14.6	-87.18	2.5	-216.4	433.9	405.0	28.80	15.063	
6,900.0	6,815.9	6,866.8	6,800.0	15.1	14.7	-87.52	67.4	-221.3	434.5	405.1	29.34	14.807	
7,000.0	6,877.4	6,964.0	6,862.4	15.3	15.0	-87.91	141.5	-227.0	435.2	405.0	30.14	14.438	
7,100.0	6,927.4	7,061.6	6,914.4	15.8	15.6	-88.34	223.9	-233.3	436.0	404.7	31.26	13.946	
7,200.0	6,964.9	7,159.8	6,954.9	16.6	16.4	-88.80	312.9	-240.2	436.9	404.2	32.74	13.345	
7,300.0	6,989.1	7,258.5	6,982.9	17.5	17.3	-89.28	407.3	-247.4	437.9	403.4	34.57	12.669	
7,400.0	6,999.6	7,357.8	6,997.7	18.6	18.3	-89.78	505.1	-254.9	439.0	402.3	36.71	11.960	
7,500.0	7,000.0	7,457.7	7,000.0	19.8	19.6	-90.00	604.7	-262.5	440.1	401.0	39.11	11.254	
7,600.0	7,000.0	7,557.7	7,000.0	21.1	20.9	-90.00	704.4	-270.1	441.2	399.5	41.73	10.574	
7,700.0	7,000.0	7,657.7	7,000.0	22.5	22.3	-90.00	804.1	-277.8	442.3	397.8	44.53	9.933	
7,800.0	7,000.0	7,757.7	7,000.0	23.9	23.8	-90.00	903.8	-285.4	443.5	396.0	47.49	9.337	
7,900.0	7,000.0	7,857.7	7,000.0	25.5	25.3	-90.00	1,003.5	-293.0	444.6	394.0	50.58	8.789	
8,000.0	7,000.0	7,957.7	7,000.0	27.1	26.9	-90.00	1,103.2	-300.7	445.7	391.9	53.78	8.288	
8,100.0	7,000.0	8,057.7	7,000.0	28.7	28.6	-90.00	1,202.9	-308.3	446.8	389.8	57.06	7.831	
8,200.0	7,000.0	8,157.7	7,000.0	30.4	30.3	-90.00	1,302.6	-316.0	447.9	387.5	60.41	7.414	
8,300.0	7,000.0	8,257.7	7,000.0	32.1	32.0	-90.00	1,402.3	-323.6	449.0	385.2	63.83	7.035	
8,400.0	7,000.0	8,357.7	7,000.0	33.8	33.7	-90.00	1,502.0	-331.2	450.2	382.9	67.30	6.689	
8,500.0	7,000.0	8,457.7	7,000.0	35.5	35.5	-90.00	1,601.7	-338.9	451.3	380.5	70.82	6.372	
8,600.0	7,000.0	8,557.7	7,000.0	37.3	37.2	-90.00	1,701.4	-346.5	452.4	378.0	74.37	6.083	
8,700.0	7,000.0	8,657.7	7,000.0	39.1	39.0	-90.00	1,801.1	-354.1	453.5	375.6	77.96	5.817	
8,800.0	7,000.0	8,757.7	7,000.0	40.9	40.9	-90.00	1,900.8	-361.8	454.6	373.1	81.58	5.573	
8,900.0	7,000.0	8,857.6	7,000.0	42.7	42.7	-90.00	2,000.5	-369.4	455.8	370.5	85.22	5.348	
9,000.0	7,000.0	8,957.6	7,000.0	44.5	44.5	-90.00	2,100.2	-377.1	456.9	368.0	88.88	5.140	
9,100.0	7,000.0	9,057.6	7,000.0	46.4	46.4	-90.00	2,199.9	-384.7	458.0	365.4	92.56	4.948	
9,200.0	7,000.0	9,157.6	7,000.0	48.2	48.2	-90.00	2,299.6	-392.3	459.1	362.8	96.26	4.769	
9,300.0	7,000.0	9,257.6	7,000.0	50.1	50.1	-90.00	2,399.3	-400.0	460.2	360.2	99.98	4.603	
9,400.0	7,000.0	9,357.6	7,000.0	51.9	51.9	-90.00	2,499.0	-407.6	461.3	357.6	103.71	4.449	
9,500.0	7,000.0	9,457.6	7,000.0	53.8	53.8	-90.00	2,598.7	-415.2	462.5	355.0	107.45	4.304	
9,600.0	7,000.0	9,557.6	7,000.0	55.7	55.7	-90.00	2,698.4	-422.9	463.6	352.4	111.20	4.169	
9,700.0	7,000.0	9,657.6	7,000.0	57.5	57.6	-90.00	2,798.1	-430.5	464.7	349.7	114.96	4.042	
9,800.0	7,000.0	9,757.6	7,000.0	59.4	59.5	-90.00	2,897.8	-438.1	465.8	347.1	118.73	3.923	
9,900.0	7,000.0	9,857.6	7,000.0	61.3	61.4	-90.00	2,997.5	-445.8	466.9	344.4	122.51	3.811	
10,000.0	7,000.0	9,957.6	7,000.0	63.2	63.2	-90.00	3,097.2	-453.4	468.1	341.8	126.30	3.706	
10,100.0	7,000.0	10,057.6	7,000.0	65.1	65.1	-90.00	3,196.9	-461.1	469.2	339.1	130.09	3.606	
10,200.0	7,000.0	10,157.6	7,000.0	67.0	67.0	-90.00	3,296.6	-468.7	470.3	336.4	133.89	3.512	
10,300.0	7,000.0	10,257.6	7,000.0	68.9	69.0	-90.00	3,396.3	-476.3	471.4	333.7	137.70	3.423	

CC - Min centre to center distance or convergent point, SF - min separation factor, ES - min ellipse separation

Company:	Synergy Resources	Local Co-ordinate Reference:	Well SRC Kiehn C-4CHZ
Project:	SEC.4-T4N-R68W	TVD Reference:	WELL @ 5077.0ft (RKB - 13')
Reference Site:	SRC Kiehn Pad Sec.4-T4N-R68W	MD Reference:	WELL @ 5077.0ft (RKB - 13')
Site Error:	0.0ft	North Reference:	True
Reference Well:	SRC Kiehn C-4CHZ	Survey Calculation Method:	Minimum Curvature
Well Error:	0.0ft	Output errors are at	2.00 sigma
Reference Wellbore	Wellbore #1	Database:	Landmark
Reference Design:	Plan #2 (4-25-14)	Offset TVD Reference:	Offset Datum

Offset Design												Offset Site Error:	0.0 ft
SRC Kiehn Pad Sec.4-T4N-R68W - SRC Kiehn 32-4CHZ - Wellbore #1 - Plan #2 (4-25-14)												Offset Well Error:	0.0 ft
Survey Program: 0-MWD													
Reference		Offset		Semi Major Axis			Distance						
Measured Depth (ft)	Vertical Depth (ft)	Measured Depth (ft)	Vertical Depth (ft)	Reference (ft)	Offset (ft)	Highside Toolface (°)	Offset Wellbore Centre +N/-S (ft)	+E/-W (ft)	Between Centres (ft)	Between Ellipses (ft)	Minimum Separation (ft)	Separation Factor	Warning
10,400.0	7,000.0	10,357.6	7,000.0	70.8	70.9	-90.00	3,496.0	-484.0	472.5	331.0	141.51	3.339	
10,500.0	7,000.0	10,457.5	7,000.0	72.7	72.8	-90.00	3,595.7	-491.6	473.6	328.3	145.33	3.259	
10,600.0	7,000.0	10,557.5	7,000.0	74.6	74.7	-90.00	3,695.4	-499.2	474.8	325.6	149.15	3.183	
10,700.0	7,000.0	10,657.5	7,000.0	76.5	76.6	-90.00	3,795.1	-506.9	475.9	322.9	152.97	3.111	
10,800.0	7,000.0	10,757.5	7,000.0	78.4	78.5	-90.00	3,894.8	-514.5	477.0	320.2	156.80	3.042	
10,900.0	7,000.0	10,857.5	7,000.0	80.3	80.4	-90.00	3,994.5	-522.2	478.1	317.5	160.63	2.977	
11,000.0	7,000.0	10,957.5	7,000.0	82.2	82.4	-90.00	4,094.2	-529.8	479.2	314.8	164.46	2.914	
11,100.0	7,000.0	11,057.5	7,000.0	84.1	84.3	-90.00	4,193.9	-537.4	480.4	312.1	168.30	2.854	
11,200.0	7,000.0	11,157.5	7,000.0	86.0	86.2	-90.00	4,293.6	-545.1	481.5	309.3	172.14	2.797	
11,293.3	7,000.0	11,250.8	7,000.0	87.8	87.8	-90.00	4,386.6	-552.2	482.5	307.0	175.53	2.749 SF	

Offset Design												Offset Site Error: 0.0 ft	
Survey Program: 0-MWD												Offset Well Error: 0.0 ft	
Reference		Offset		Semi Major Axis			Distance						Warning
Measured Depth (ft)	Vertical Depth (ft)	Measured Depth (ft)	Vertical Depth (ft)	Reference (ft)	Offset (ft)	Highside Toolface (°)	Offset Wellbore Centre +N/-S (ft)	+E/-W (ft)	Between Centres (ft)	Between Ellipses (ft)	Minimum Separation (ft)	Separation Factor	
0.0	0.0	0.0	0.0	0.0	0.0	-90.92	-0.4	-22.6	22.6				
100.0	100.0	100.0	100.0	0.1	0.1	-90.92	-0.4	-22.6	22.6	22.4	0.22	100.481	
200.0	200.0	200.0	200.0	0.3	0.3	-90.92	-0.4	-22.6	22.6	21.9	0.67	33.494	
300.0	300.0	300.0	300.0	0.6	0.6	-90.92	-0.4	-22.6	22.6	21.5	1.12	20.096	
400.0	400.0	400.0	400.0	0.8	0.8	-90.92	-0.4	-22.6	22.6	21.0	1.57	14.354	
500.0	500.0	500.0	500.0	1.0	1.0	-90.92	-0.4	-22.6	22.6	20.6	2.02	11.165	
600.0	600.0	600.0	600.0	1.2	1.2	-90.92	-0.4	-22.6	22.6	20.1	2.47	9.135	
700.0	700.0	700.0	700.0	1.5	1.5	-90.92	-0.4	-22.6	22.6	19.7	2.92	7.729	
800.0	800.0	800.0	800.0	1.7	1.7	-90.92	-0.4	-22.6	22.6	19.2	3.37	6.699	
900.0	900.0	900.0	900.0	1.9	1.9	-90.92	-0.4	-22.6	22.6	18.8	3.82	5.911	
1,000.0	1,000.0	1,000.0	1,000.0	2.1	2.1	-90.92	-0.4	-22.6	22.6	18.3	4.27	5.288	
1,100.0	1,100.0	1,100.0	1,100.0	2.4	2.4	-90.92	-0.4	-22.6	22.6	17.9	4.72	4.785	
1,200.0	1,200.0	1,200.0	1,200.0	2.6	2.6	-90.92	-0.4	-22.6	22.6	17.4	5.17	4.369	
1,300.0	1,300.0	1,300.0	1,300.0	2.8	2.8	-90.92	-0.4	-22.6	22.6	17.0	5.62	4.019	
1,400.0	1,400.0	1,400.0	1,400.0	3.0	3.0	-90.92	-0.4	-22.6	22.6	16.5	6.07	3.722	
1,500.0	1,500.0	1,500.0	1,500.0	3.3	3.3	-90.92	-0.4	-22.6	22.6	16.1	6.52	3.465	
1,600.0	1,600.0	1,600.0	1,600.0	3.5	3.5	-90.92	-0.4	-22.6	22.6	15.6	6.97	3.241	
1,700.0	1,700.0	1,700.0	1,700.0	3.7	3.7	-90.92	-0.4	-22.6	22.6	15.2	7.42	3.045	
1,800.0	1,800.0	1,800.0	1,800.0	3.9	3.9	-90.92	-0.4	-22.6	22.6	14.7	7.87	2.871	
1,900.0	1,900.0	1,900.0	1,900.0	4.2	4.2	-90.92	-0.4	-22.6	22.6	14.3	8.32	2.716	
2,000.0	2,000.0	2,000.0	2,000.0	4.4	4.4	-90.92	-0.4	-22.6	22.6	13.8	8.77	2.576	
2,100.0	2,100.0	2,100.0	2,100.0	4.6	4.6	-90.92	-0.4	-22.6	22.6	13.4	9.22	2.451	
2,200.0	2,200.0	2,200.0	2,200.0	4.8	4.8	-90.92	-0.4	-22.6	22.6	12.9	9.66	2.337	
2,300.0	2,300.0	2,300.1	2,300.1	5.1	5.0	-95.34	-2.1	-22.2	22.3	12.2	10.09	2.214	
2,354.4	2,354.4	2,354.5	2,354.4	5.2	5.1	-101.38	-4.4	-21.8	22.2	11.9	10.30	2.156 CC	
2,400.0	2,400.0	2,400.0	2,399.9	5.3	5.2	-106.90	-6.5	-21.3	22.3	11.8	10.48	2.129 ES	
2,500.0	2,500.0	2,499.9	2,499.7	5.5	5.4	-118.53	-11.1	-20.4	23.2	12.4	10.88	2.137	
2,600.0	2,600.0	2,599.8	2,599.5	5.7	5.6	-128.88	-15.7	-19.5	25.0	13.8	11.28	2.220	
2,700.0	2,700.0	2,699.7	2,699.2	6.0	5.7	-137.60	-20.3	-18.6	27.5	15.8	11.69	2.356	
2,800.0	2,800.0	2,799.6	2,799.0	6.2	5.9	-144.74	-24.9	-17.6	30.6	18.5	12.11	2.525	
2,900.0	2,900.0	2,899.5	2,898.8	6.4	6.1	-150.53	-29.6	-16.7	34.0	21.5	12.52	2.713	
3,000.0	3,000.0	2,999.4	2,998.6	6.6	6.3	-155.22	-34.2	-15.8	37.7	24.7	12.95	2.910	
3,100.0	3,100.0	3,099.3	3,098.4	6.8	6.5	79.72	-38.8	-14.8	41.2	27.9	13.33	3.091	
3,200.0	3,199.8	3,199.2	3,198.2	7.0	6.7	82.86	-43.4	-13.9	44.2	30.5	13.72	3.224	
3,300.0	3,299.5	3,299.0	3,297.9	7.2	6.9	89.80	-48.0	-13.0	47.2	33.1	14.11	3.346	
3,400.0	3,398.7	3,398.6	3,397.3	7.4	7.1	99.45	-52.6	-12.1	51.3	36.8	14.52	3.531	
3,500.0	3,497.9	3,498.1	3,496.7	7.6	7.3	108.25	-57.2	-11.1	56.8	41.9	14.93	3.804	
3,600.0	3,597.1	3,597.6	3,596.1	7.8	7.6	115.36	-61.8	-10.2	63.4	48.1	15.35	4.132	
3,700.0	3,696.3	3,697.1	3,695.5	8.1	7.8	121.07	-66.4	-9.3	70.8	55.1	15.77	4.493	
3,800.0	3,795.5	3,796.6	3,794.9	8.3	8.0	125.66	-71.0	-8.4	78.8	62.6	16.19	4.868	
3,900.0	3,894.7	3,896.1	3,894.3	8.5	8.2	129.39	-75.6	-7.4	87.2	70.6	16.61	5.248	
4,000.0	3,993.9	3,995.6	3,993.7	8.8	8.4	132.46	-80.2	-6.5	95.9	78.8	17.04	5.625	
4,100.0	4,093.1	4,095.1	4,093.1	9.0	8.6	135.02	-84.8	-5.6	104.8	87.3	17.47	5.996	
4,200.0	4,192.2	4,194.6	4,192.5	9.3	8.9	137.17	-89.4	-4.7	113.9	96.0	17.91	6.358	
4,300.0	4,291.4	4,294.1	4,291.9	9.6	9.1	139.00	-94.0	-3.7	123.1	104.7	18.35	6.708	
4,400.0	4,390.6	4,393.6	4,391.2	9.8	9.3	140.57	-98.6	-2.8	132.4	113.6	18.79	7.047	
4,500.0	4,489.8	4,493.1	4,490.6	10.1	9.5	141.94	-103.2	-1.9	141.8	122.6	19.24	7.374	
4,600.0	4,589.0	4,592.6	4,590.0	10.4	9.7	143.14	-107.8	-1.0	151.3	131.6	19.68	7.688	
4,700.0	4,688.2	4,692.1	4,689.4	10.7	10.0	144.19	-112.4	0.0	160.9	140.7	20.13	7.991	
4,800.0	4,787.4	4,791.6	4,788.8	10.9	10.2	145.13	-117.0	0.9	170.5	149.9	20.58	8.282	
4,900.0	4,886.6	4,891.1	4,888.2	11.2	10.4	145.96	-121.6	1.8	180.1	159.1	21.04	8.561	
5,000.0	4,985.8	4,990.6	4,987.6	11.5	10.7	146.72	-126.2	2.7	189.8	168.3	21.49	8.829	

COMPASS 2003.21 Build 46

Offset Design SRC Kiehn Pad Sec.4-T4N-R68W - SRC Kiehn 32-4NHZ - Wellbore #1 - Plan #2 (4-25-14)												Offset Site Error:	0.0 ft
Survey Program: 0-MWD												Offset Well Error:	0.0 ft
Reference		Offset		Semi Major Axis			Distance						Warning
Measured Depth (ft)	Vertical Depth (ft)	Measured Depth (ft)	Vertical Depth (ft)	Reference (ft)	Offset (ft)	Highside Toolface (°)	Offset Wellbore Centre +N/-S (ft)	+E/-W (ft)	Between Centres (ft)	Between Ellipses (ft)	Minimum Separation (ft)	Separation Factor	
5,100.0	5,085.0	5,090.1	5,087.0	11.8	10.9	147.39	-130.8	3.7	199.5	177.5	21.95	9.087	
5,200.0	5,184.2	5,189.6	5,186.4	12.1	11.1	148.00	-135.4	4.6	208.8	186.4	22.42	9.313	
5,300.0	5,283.8	5,289.4	5,286.1	12.3	11.3	148.16	-140.0	5.5	215.7	192.8	22.90	9.419	
5,400.0	5,383.6	5,389.3	5,385.9	12.5	11.6	147.80	-144.6	6.5	219.5	196.2	23.36	9.399	
5,500.0	5,483.6	5,488.9	5,485.4	12.7	11.8	146.96	-149.1	7.4	220.5	196.7	23.80	9.265	
5,600.0	5,583.6	5,587.4	5,583.8	12.9	12.0	-90.08	-151.3	7.8	220.1	195.9	24.14	9.116	
5,639.9	5,623.4	5,627.0	5,623.4	13.0	12.1	-90.09	-151.4	7.8	220.1	195.8	24.31	9.054	
5,700.0	5,683.6	5,687.1	5,683.6	13.1	12.2	-90.09	-151.4	7.8	220.1	195.5	24.56	8.962	
5,800.0	5,783.6	5,787.1	5,783.6	13.3	12.4	-90.09	-151.4	7.8	220.1	195.1	24.96	8.816	
5,900.0	5,883.6	5,887.1	5,883.6	13.5	12.6	-90.09	-151.4	7.8	220.1	194.7	25.37	8.674	
6,000.0	5,983.6	5,987.1	5,983.6	13.7	12.8	-90.09	-151.4	7.8	220.1	194.3	25.78	8.537	
6,100.0	6,083.6	6,087.1	6,083.6	13.9	13.0	-90.09	-151.4	7.8	220.1	193.9	26.19	8.403	
6,200.0	6,183.6	6,187.1	6,183.6	14.1	13.2	-90.09	-151.4	7.8	220.1	193.5	26.60	8.273	
6,300.0	6,283.6	6,287.1	6,283.6	14.3	13.4	-90.09	-151.4	7.8	220.1	193.1	27.02	8.146	
6,400.0	6,383.2	6,385.2	6,381.3	14.5	13.6	-86.39	-144.7	7.4	220.1	192.6	27.44	8.020	
6,500.0	6,481.0	6,483.3	6,477.3	14.7	13.7	-86.49	-124.8	6.1	220.1	192.3	27.73	7.936	
6,600.0	6,574.9	6,581.5	6,569.8	14.8	13.9	-86.66	-91.9	3.9	220.0	192.0	27.98	7.862	
6,700.0	6,663.1	6,679.8	6,656.9	14.9	14.0	-86.90	-46.7	1.0	220.0	191.7	28.26	7.783	
6,800.0	6,744.0	6,778.3	6,737.1	15.0	14.2	-87.19	10.0	-2.7	219.9	191.3	28.64	7.677	
6,900.0	6,815.9	6,876.9	6,808.9	15.1	14.5	-87.54	77.3	-7.1	219.9	190.6	29.21	7.526	
7,000.0	6,877.4	6,975.7	6,870.9	15.3	14.9	-87.94	154.0	-12.2	219.8	189.8	30.05	7.314	
7,100.0	6,927.4	7,074.7	6,921.8	15.8	15.5	-88.37	238.6	-17.7	219.8	188.5	31.22	7.039	
7,200.0	6,964.9	7,173.9	6,960.7	16.6	16.3	-88.84	329.7	-23.7	219.7	187.0	32.74	6.711	
7,300.0	6,989.1	7,273.4	6,986.6	17.5	17.2	-89.33	425.5	-29.9	219.7	185.1	34.61	6.348	
7,387.7	6,999.0	7,360.9	6,998.1	18.4	18.2	-89.77	511.9	-35.6	219.7	183.2	36.50	6.019	
7,400.0	6,999.6	7,373.1	6,998.9	18.6	18.3	-89.84	524.2	-36.4	219.7	182.9	36.78	5.973	
7,500.0	7,000.0	7,473.1	7,000.0	19.8	19.6	-90.00	623.9	-42.9	219.7	180.5	39.20	5.605	
7,600.0	7,000.0	7,573.1	7,000.0	21.1	20.9	-90.00	723.7	-49.4	219.7	177.9	41.83	5.252	
7,700.0	7,000.0	7,673.1	7,000.0	22.5	22.3	-90.00	823.5	-56.0	219.7	175.1	44.65	4.920	
7,800.0	7,000.0	7,773.1	7,000.0	23.9	23.8	-90.00	923.3	-62.5	219.7	172.1	47.62	4.614	
7,900.0	7,000.0	7,873.1	7,000.0	25.5	25.4	-90.00	1,023.1	-69.0	219.7	169.0	50.72	4.332	
8,000.0	7,000.0	7,973.1	7,000.0	27.1	27.0	-90.00	1,122.9	-75.6	219.7	165.8	53.92	4.075	
8,100.0	7,000.0	8,073.1	7,000.0	28.7	28.6	-90.00	1,222.6	-82.1	219.7	162.5	57.21	3.841	
8,200.0	7,000.0	8,173.1	7,000.0	30.4	30.3	-90.00	1,322.4	-88.6	219.8	159.2	60.57	3.628	
8,300.0	7,000.0	8,273.1	7,000.0	32.1	32.0	-90.00	1,422.2	-95.2	219.8	155.8	63.99	3.434	
8,400.0	7,000.0	8,373.1	7,000.0	33.8	33.8	-90.00	1,522.0	-101.7	219.8	152.3	67.46	3.258	
8,500.0	7,000.0	8,473.1	7,000.0	35.5	35.5	-90.00	1,621.8	-108.2	219.8	148.8	70.97	3.097	
8,600.0	7,000.0	8,573.1	7,000.0	37.3	37.3	-90.00	1,721.6	-114.7	219.8	145.3	74.53	2.949	
8,700.0	7,000.0	8,673.1	7,000.0	39.1	39.1	-90.00	1,821.4	-121.3	219.8	141.7	78.11	2.814	
8,800.0	7,000.0	8,773.1	7,000.0	40.9	40.9	-90.00	1,921.1	-127.8	219.8	138.1	81.73	2.689	
8,900.0	7,000.0	8,873.1	7,000.0	42.7	42.8	-90.00	2,020.9	-134.3	219.8	134.4	85.37	2.575	
9,000.0	7,000.0	8,973.1	7,000.0	44.5	44.6	-90.00	2,120.7	-140.9	219.8	130.8	89.03	2.469	
9,100.0	7,000.0	9,073.1	7,000.0	46.4	46.4	-90.00	2,220.5	-147.4	219.8	127.1	92.71	2.371	
9,200.0	7,000.0	9,173.1	7,000.0	48.2	48.3	-90.00	2,320.3	-153.9	219.8	123.4	96.41	2.280	
9,300.0	7,000.0	9,273.1	7,000.0	50.1	50.1	-90.00	2,420.1	-160.4	219.8	119.7	100.12	2.196	
9,400.0	7,000.0	9,373.1	7,000.0	51.9	52.0	-90.00	2,519.9	-167.0	219.8	116.0	103.85	2.117	
9,500.0	7,000.0	9,473.1	7,000.0	53.8	53.9	-90.00	2,619.7	-173.5	219.9	112.3	107.58	2.044	
9,600.0	7,000.0	9,573.1	7,000.0	55.7	55.8	-90.00	2,719.4	-180.0	219.9	108.5	111.33	1.975	
9,700.0	7,000.0	9,673.1	7,000.0	57.5	57.6	-90.00	2,819.2	-186.6	219.9	104.8	115.09	1.910	
9,800.0	7,000.0	9,773.1	7,000.0	59.4	59.5	-90.00	2,919.0	-193.1	219.9	101.0	118.86	1.850	
9,900.0	7,000.0	9,873.1	7,000.0	61.3	61.4	-90.00	3,018.8	-199.6	219.9	97.2	122.63	1.793	
10,000.0	7,000.0	9,973.1	7,000.0	63.2	63.3	-90.00	3,118.6	-206.2	219.9	93.5	126.42	1.739	

Company:	Synergy Resources	Local Co-ordinate Reference:	Well SRC Kiehn C-4CHZ
Project:	SEC.4-T4N-R68W	TVD Reference:	WELL @ 5077.0ft (RKB - 13')
Reference Site:	SRC Kiehn Pad Sec.4-T4N-R68W	MD Reference:	WELL @ 5077.0ft (RKB - 13')
Site Error:	0.0ft	North Reference:	True
Reference Well:	SRC Kiehn C-4CHZ	Survey Calculation Method:	Minimum Curvature
Well Error:	0.0ft	Output errors are at	2.00 sigma
Reference Wellbore	Wellbore #1	Database:	Landmark
Reference Design:	Plan #2 (4-25-14)	Offset TVD Reference:	Offset Datum

Offset Design SRC Kiehn Pad Sec.4-T4N-R68W - SRC Kiehn 32-4NHZ - Wellbore #1 - Plan #2 (4-25-14)												Offset Site Error:	0.0 ft
Survey Program: 0-MWD												Offset Well Error:	0.0 ft
Reference	Offset	Semi Major Axis		Distance									
Measured Depth (ft)	Vertical Depth (ft)	Measured Depth (ft)	Vertical Depth (ft)	Reference (ft)	Offset (ft)	Highside Toolface (°)	Offset Wellbore Centre +N/-S (ft)	+E/-W (ft)	Between Centres (ft)	Between Ellipses (ft)	Minimum Separation (ft)	Separation Factor	Warning
10,100.0	7,000.0	10,073.1	7,000.0	65.1	65.2	-90.00	3,218.4	-212.7	219.9	89.7	130.21	1.689	
10,200.0	7,000.0	10,173.1	7,000.0	67.0	67.1	-90.00	3,318.2	-219.2	219.9	85.9	134.00	1.641	
10,300.0	7,000.0	10,273.1	7,000.0	68.9	69.0	-90.00	3,417.9	-225.7	219.9	82.1	137.80	1.596	
10,400.0	7,000.0	10,373.1	7,000.0	70.8	70.9	-90.00	3,517.7	-232.3	219.9	78.3	141.61	1.553	
10,500.0	7,000.0	10,473.1	7,000.0	72.7	72.8	-90.00	3,617.5	-238.8	219.9	74.5	145.42	1.512	
10,600.0	7,000.0	10,573.1	7,000.0	74.6	74.7	-90.00	3,717.3	-245.3	219.9	70.7	149.24	1.474	Level 3
10,700.0	7,000.0	10,673.1	7,000.0	76.5	76.6	-90.00	3,817.1	-251.9	219.9	66.9	153.06	1.437	Level 3
10,800.0	7,000.0	10,773.1	7,000.0	78.4	78.5	-90.00	3,916.9	-258.4	220.0	63.1	156.88	1.402	Level 3
10,900.0	7,000.0	10,873.1	7,000.0	80.3	80.5	-90.00	4,016.7	-264.9	220.0	59.3	160.71	1.369	Level 3
11,000.0	7,000.0	10,973.1	7,000.0	82.2	82.4	-90.00	4,116.4	-271.4	220.0	55.4	164.54	1.337	Level 3
11,100.0	7,000.0	11,073.1	7,000.0	84.1	84.3	-90.00	4,216.2	-278.0	220.0	51.6	168.37	1.307	Level 3
11,200.0	7,000.0	11,173.1	7,000.0	86.0	86.2	-90.00	4,316.0	-284.5	220.0	47.8	172.20	1.277	Level 3
11,293.3	7,000.0	11,266.4	7,000.0	87.8	88.0	-90.00	4,409.1	-290.6	220.0	44.2	175.78	1.251	Level 3, SF

Offset Design SRC Kiehn Pad Sec.4-T4N-R68W - SRC Kiehn C-4NHZ - Wellbore #1 - Plan #2 (4-25-14)													Offset Site Error: 0.0 ft	
Survey Program: 0-MWD													Offset Well Error: 0.0 ft	
Reference		Offset		Semi Major Axis			Distance							
Measured Depth	Vertical Depth	Measured Depth	Vertical Depth	Reference	Offset	Highside Toolface	Offset Wellbore Centre		Between Centres	Between Ellipses	Minimum Separation	Separation Factor	Warning	
(ft)	(ft)	(ft)	(ft)	(ft)	(ft)	(°)	+N/-S (ft)	+E/-W (ft)	(ft)	(ft)	(ft)			
0.0	0.0	0.0	0.0	0.0	0.0	88.96	0.4	19.8	19.8	19.8	0.00	N/A		
100.0	100.0	100.0	100.0	0.1	0.1	88.96	0.4	19.8	19.8	19.6	0.22	88.079		
200.0	200.0	200.0	200.0	0.3	0.3	88.96	0.4	19.8	19.8	19.1	0.67	29.360		
300.0	300.0	300.0	300.0	0.6	0.6	88.96	0.4	19.8	19.8	18.7	1.12	17.616		
400.0	400.0	400.0	400.0	0.8	0.8	88.96	0.4	19.8	19.8	18.2	1.57	12.583		
500.0	500.0	500.0	500.0	1.0	1.0	88.96	0.4	19.8	19.8	17.8	2.02	9.787		
600.0	600.0	600.0	600.0	1.2	1.2	88.96	0.4	19.8	19.8	17.3	2.47	8.007		
700.0	700.0	700.0	700.0	1.5	1.5	88.96	0.4	19.8	19.8	16.9	2.92	6.775		
800.0	800.0	800.0	800.0	1.7	1.7	88.96	0.4	19.8	19.8	16.4	3.37	5.872		
900.0	900.0	900.0	900.0	1.9	1.9	88.96	0.4	19.8	19.8	16.0	3.82	5.181		
1,000.0	1,000.0	1,000.0	1,000.0	2.1	2.1	88.96	0.4	19.8	19.8	15.5	4.27	4.636		
1,100.0	1,100.0	1,100.0	1,100.0	2.4	2.4	88.96	0.4	19.8	19.8	15.1	4.72	4.194		
1,200.0	1,200.0	1,200.0	1,200.0	2.6	2.6	88.96	0.4	19.8	19.8	14.6	5.17	3.830		
1,300.0	1,300.0	1,300.0	1,300.0	2.8	2.8	88.96	0.4	19.8	19.8	14.2	5.62	3.523		
1,400.0	1,400.0	1,400.0	1,400.0	3.0	3.0	88.96	0.4	19.8	19.8	13.7	6.07	3.262		
1,500.0	1,500.0	1,500.0	1,500.0	3.3	3.3	88.96	0.4	19.8	19.8	13.3	6.52	3.037 CC, ES		
1,600.0	1,600.0	1,599.3	1,599.3	3.5	3.5	90.57	-0.2	21.4	21.4	14.5	6.95	3.084		
1,700.0	1,700.0	1,698.4	1,698.2	3.7	3.7	94.19	-1.9	26.3	26.4	19.0	7.37	3.584		
1,800.0	1,800.0	1,797.0	1,796.5	3.9	3.9	97.89	-4.8	34.3	34.8	27.0	7.79	4.468		
1,900.0	1,900.0	1,894.9	1,893.7	4.2	4.1	100.82	-8.7	45.4	46.7	38.5	8.23	5.675		
2,000.0	2,000.0	1,993.4	1,991.2	4.4	4.3	102.84	-13.4	58.9	61.0	52.4	8.68	7.034		
2,100.0	2,100.0	2,092.4	2,089.0	4.6	4.6	104.11	-18.2	72.5	75.5	66.4	9.14	8.265		
2,200.0	2,200.0	2,191.3	2,186.9	4.8	4.8	104.97	-23.0	86.1	90.1	80.5	9.61	9.371		
2,300.0	2,300.0	2,290.2	2,284.8	5.1	5.1	105.59	-27.8	99.7	104.6	94.5	10.09	10.365		
2,400.0	2,400.0	2,389.2	2,382.7	5.3	5.4	106.06	-32.6	113.3	119.2	108.6	10.58	11.263		
2,500.0	2,500.0	2,488.1	2,480.5	5.5	5.7	106.43	-37.4	126.9	133.7	122.6	11.07	12.075		
2,600.0	2,600.0	2,587.0	2,578.4	5.7	6.0	106.72	-42.2	140.5	148.3	136.7	11.57	12.812		
2,700.0	2,700.0	2,686.0	2,676.3	6.0	6.3	106.97	-47.0	154.1	162.9	150.8	12.08	13.483		
2,800.0	2,800.0	2,784.9	2,774.2	6.2	6.6	107.17	-51.8	167.7	177.4	164.8	12.59	14.096		
2,900.0	2,900.0	2,883.8	2,872.0	6.4	7.0	107.34	-56.6	181.3	192.0	178.9	13.10	14.658		
3,000.0	3,000.0	2,982.8	2,969.9	6.6	7.3	107.49	-61.4	194.9	206.6	192.9	13.61	15.174		
3,100.0	3,100.0	3,081.9	3,068.0	6.8	7.6	-15.97	-66.2	208.5	219.5	206.0	13.47	16.296		
3,200.0	3,199.8	3,181.4	3,166.5	7.0	7.9	-16.15	-71.0	222.2	229.1	215.2	13.87	16.513		
3,300.0	3,299.5	3,281.2	3,265.2	7.2	8.3	-16.58	-75.9	236.0	235.3	221.0	14.27	16.493		
3,400.0	3,398.7	3,381.1	3,364.0	7.4	8.6	-17.23	-80.7	249.7	238.4	223.8	14.67	16.253		
3,500.0	3,497.9	3,481.1	3,462.9	7.6	8.9	-17.94	-85.6	263.4	240.9	225.8	15.10	15.954		
3,600.0	3,597.1	3,581.0	3,561.7	7.8	9.3	-18.63	-90.4	277.2	243.4	227.9	15.53	15.668		
3,700.0	3,696.3	3,680.9	3,660.6	8.1	9.6	-19.30	-95.3	290.9	245.9	230.0	15.98	15.394		
3,800.0	3,795.5	3,780.8	3,759.5	8.3	10.0	-19.96	-100.1	304.7	248.5	232.1	16.42	15.132		
3,900.0	3,894.7	3,880.8	3,858.3	8.5	10.3	-20.61	-105.0	318.4	251.1	234.2	16.87	14.881		
4,000.0	3,993.9	3,980.7	3,957.2	8.8	10.6	-21.25	-109.8	332.1	253.7	236.4	17.33	14.641		
4,100.0	4,093.1	4,080.6	4,056.0	9.0	11.0	-21.87	-114.7	345.9	256.4	238.6	17.79	14.410		
4,200.0	4,192.2	4,180.6	4,154.9	9.3	11.3	-22.47	-119.5	359.6	259.1	240.8	18.26	14.189		
4,300.0	4,291.4	4,280.5	4,253.7	9.6	11.7	-23.07	-124.3	373.4	261.8	243.1	18.73	13.977		
4,400.0	4,390.6	4,380.4	4,352.6	9.8	12.0	-23.65	-129.2	387.1	264.6	245.4	19.21	13.773		
4,500.0	4,489.8	4,480.3	4,451.5	10.1	12.4	-24.23	-134.0	400.8	267.3	247.6	19.69	13.578		
4,600.0	4,589.0	4,580.3	4,550.3	10.4	12.7	-24.79	-138.9	414.6	270.1	250.0	20.18	13.390		
4,700.0	4,688.2	4,687.1	4,656.2	10.7	13.1	-25.41	-143.8	428.4	272.1	251.4	20.67	13.166		
4,800.0	4,787.4	4,797.3	4,765.8	10.9	13.3	-26.22	-147.4	438.8	270.5	249.4	21.15	12.794		
4,900.0	4,886.6	4,907.1	4,875.3	11.2	13.5	-27.25	-149.7	445.3	265.3	243.6	21.62	12.267		
5,000.0	4,985.8	5,016.2	4,984.4	11.5	13.7	-28.54	-150.6	447.9	256.4	234.3	22.11	11.596		
5,100.0	5,085.0	5,116.7	5,085.0	11.8	13.9	-29.97	-150.6	447.9	245.3	222.7	22.60	10.856		

COMPASS 2003.21 Build 46

Company:	Synergy Resources	Local Co-ordinate Reference:	Well SRC Kiehn C-4CHZ
Project:	SEC.4-T4N-R68W	TVD Reference:	WELL @ 5077.0ft (RKB - 13')
Reference Site:	SRC Kiehn Pad Sec.4-T4N-R68W	MD Reference:	WELL @ 5077.0ft (RKB - 13')
Site Error:	0.0ft	North Reference:	True
Reference Well:	SRC Kiehn C-4CHZ	Survey Calculation Method:	Minimum Curvature
Well Error:	0.0ft	Output errors are at	2.00 sigma
Reference Wellbore	Wellbore #1	Database:	Landmark
Reference Design:	Plan #2 (4-25-14)	Offset TVD Reference:	Offset Datum

Offset Design SRC Kiehn Pad Sec.4-T4N-R68W - SRC Kiehn C-4NHZ - Wellbore #1 - Plan #2 (4-25-14)												Offset Site Error:	0.0ft
Survey Program: 0-MWD												Offset Well Error:	0.0ft
Reference		Offset		Semi Major Axis			Distance						
Measured Depth (ft)	Vertical Depth (ft)	Measured Depth (ft)	Vertical Depth (ft)	Reference (ft)	Offset (ft)	Highside Toolface (°)	Offset Wellbore Centre +N/-S (ft)	+E/-W (ft)	Between Centres (ft)	Between Ellipses (ft)	Minimum Separation (ft)	Separation Factor	Warning
5,200.0	5,184.2	5,216.0	5,184.2	12.1	14.0	-31.42	-150.6	447.9	234.7	211.6	23.10	10.163	
5,300.0	5,283.8	5,315.5	5,283.8	12.3	14.2	-32.55	-150.6	447.9	226.8	203.3	23.57	9.626	
5,400.0	5,383.6	5,415.4	5,383.6	12.5	14.4	-33.30	-150.6	447.9	222.0	198.0	24.00	9.250	
5,500.0	5,483.6	5,515.3	5,483.6	12.7	14.5	-33.61	-150.6	447.9	220.0	195.7	24.38	9.024	
5,544.9	5,528.4	5,560.2	5,528.4	12.8	14.6	-33.64	-150.6	447.9	219.9	195.3	24.56	8.953	
5,600.0	5,583.6	5,615.3	5,583.6	12.9	14.7	89.91	-150.6	447.9	220.0	195.4	24.61	8.940	
5,700.0	5,683.6	5,715.3	5,683.6	13.1	14.9	89.91	-150.6	447.9	220.0	195.0	25.02	8.794	
5,800.0	5,783.6	5,815.3	5,783.6	13.3	15.1	89.91	-150.6	447.9	220.0	194.6	25.43	8.652	
5,900.0	5,883.6	5,915.3	5,883.6	13.5	15.2	89.91	-150.6	447.9	220.0	194.2	25.84	8.514	
6,000.0	5,983.6	6,015.3	5,983.6	13.7	15.4	89.91	-150.6	447.9	220.0	193.7	26.25	8.380	
6,100.0	6,083.6	6,115.3	6,083.6	13.9	15.6	89.91	-150.6	447.9	220.0	193.3	26.67	8.249	
6,200.0	6,183.6	6,215.3	6,183.6	14.1	15.8	89.91	-150.6	447.9	220.0	192.9	27.08	8.123	
6,300.0	6,283.6	6,315.3	6,283.6	14.3	16.0	89.91	-150.6	447.9	220.0	192.5	27.50	8.000	
6,400.0	6,383.2	6,417.3	6,385.2	14.5	16.1	93.61	-143.4	447.4	220.0	192.0	28.01	7.854	
6,500.0	6,481.0	6,519.2	6,484.7	14.7	16.3	93.50	-121.9	446.0	220.0	191.7	28.29	7.774	
6,600.0	6,574.9	6,621.1	6,580.2	14.8	16.3	93.33	-86.6	443.7	219.9	191.4	28.54	7.707	
6,700.0	6,663.1	6,722.9	6,669.5	14.9	16.4	93.08	-38.2	440.5	219.9	191.1	28.80	7.634	
6,800.0	6,744.0	6,824.4	6,750.9	15.0	16.5	92.78	22.3	436.6	219.8	190.6	29.17	7.536	
6,900.0	6,815.9	6,925.8	6,822.9	15.1	16.6	92.42	93.5	431.9	219.8	190.0	29.72	7.394	
7,000.0	6,877.4	7,027.0	6,883.9	15.3	16.7	92.02	173.9	426.7	219.7	189.2	30.54	7.194	
7,100.0	6,927.4	7,128.0	6,932.9	15.8	17.0	91.57	261.9	420.9	219.6	188.0	31.68	6.933	
7,200.0	6,964.9	7,228.7	6,968.9	16.6	17.5	91.10	355.7	414.8	219.6	186.4	33.18	6.619	
7,300.0	6,989.1	7,329.1	6,991.3	17.5	18.3	90.60	453.3	408.4	219.6	184.6	35.02	6.270	
7,397.7	6,999.5	7,427.0	6,999.9	18.6	19.3	90.10	550.5	402.1	219.6	182.5	37.11	5.917	
7,400.0	6,999.6	7,429.3	6,999.9	18.6	19.3	90.09	552.8	401.9	219.6	182.4	37.16	5.909	
7,500.0	7,000.0	7,529.3	7,000.0	19.8	20.5	90.00	652.6	395.4	219.6	180.0	39.54	5.553	
7,600.0	7,000.0	7,629.3	7,000.0	21.1	21.8	90.00	752.4	388.9	219.6	177.4	42.14	5.211	
7,700.0	7,000.0	7,729.3	7,000.0	22.5	23.2	90.00	852.2	382.4	219.6	174.7	44.93	4.888	
7,800.0	7,000.0	7,829.3	7,000.0	23.9	24.6	90.00	951.9	375.9	219.6	171.7	47.87	4.588	
7,900.0	7,000.0	7,929.3	7,000.0	25.5	26.1	90.00	1,051.7	369.4	219.6	168.7	50.94	4.311	
8,000.0	7,000.0	8,029.3	7,000.0	27.1	27.7	90.00	1,151.5	362.8	219.6	165.5	54.11	4.058	
8,100.0	7,000.0	8,129.3	7,000.0	28.7	29.3	90.00	1,251.3	356.3	219.6	162.2	57.38	3.827	
8,200.0	7,000.0	8,229.3	7,000.0	30.4	30.9	90.00	1,351.1	349.8	219.6	158.9	60.72	3.617	
8,300.0	7,000.0	8,329.3	7,000.0	32.1	32.6	90.00	1,450.9	343.3	219.6	155.5	64.12	3.425	
8,400.0	7,000.0	8,429.3	7,000.0	33.8	34.3	90.00	1,550.7	336.8	219.6	152.0	67.57	3.250	
8,500.0	7,000.0	8,529.3	7,000.0	35.5	36.1	90.00	1,650.5	330.2	219.6	148.5	71.08	3.090	
8,600.0	7,000.0	8,629.3	7,000.0	37.3	37.8	90.00	1,750.2	323.7	219.6	145.0	74.62	2.943	
8,700.0	7,000.0	8,729.3	7,000.0	39.1	39.6	90.00	1,850.0	317.2	219.6	141.4	78.19	2.809	
8,800.0	7,000.0	8,829.3	7,000.0	40.9	41.4	90.00	1,949.8	310.7	219.6	137.8	81.79	2.685	
8,900.0	7,000.0	8,929.3	7,000.0	42.7	43.2	90.00	2,049.6	304.2	219.6	134.2	85.42	2.571	
9,000.0	7,000.0	9,029.3	7,000.0	44.5	45.0	90.00	2,149.4	297.7	219.6	130.6	89.07	2.466	
9,100.0	7,000.0	9,129.3	7,000.0	46.4	46.8	90.00	2,249.2	291.1	219.6	126.9	92.75	2.368	
9,200.0	7,000.0	9,229.3	7,000.0	48.2	48.6	90.00	2,349.0	284.6	219.6	123.2	96.44	2.278	
9,300.0	7,000.0	9,329.3	7,000.0	50.1	50.5	90.00	2,448.7	278.1	219.6	119.5	100.14	2.193	
9,400.0	7,000.0	9,429.3	7,000.0	51.9	52.3	90.00	2,548.5	271.6	219.6	115.8	103.86	2.115	
9,500.0	7,000.0	9,529.3	7,000.0	53.8	54.2	90.00	2,648.3	265.1	219.6	112.1	107.59	2.042	
9,600.0	7,000.0	9,629.3	7,000.0	55.7	56.0	90.00	2,748.1	258.5	219.7	108.3	111.33	1.973	
9,700.0	7,000.0	9,729.3	7,000.0	57.5	57.9	90.00	2,847.9	252.0	219.7	104.6	115.09	1.909	
9,800.0	7,000.0	9,829.3	7,000.0	59.4	59.8	90.00	2,947.7	245.5	219.7	100.8	118.85	1.848	
9,900.0	7,000.0	9,929.3	7,000.0	61.3	61.7	90.00	3,047.5	239.0	219.7	97.0	122.62	1.791	
10,000.0	7,000.0	10,029.3	7,000.0	63.2	63.5	90.00	3,147.3	232.5	219.7	93.3	126.40	1.738	
10,100.0	7,000.0	10,129.3	7,000.0	65.1	65.4	90.00	3,247.0	225.9	219.7	89.5	130.18	1.687	

CC - Min centre to center distance or convergent point, SF - min separation factor, ES - min ellipse separation

Company:	Synergy Resources	Local Co-ordinate Reference:	Well SRC Kiehn C-4CHZ
Project:	SEC.4-T4N-R68W	TVD Reference:	WELL @ 5077.0ft (RKB - 13')
Reference Site:	SRC Kiehn Pad Sec.4-T4N-R68W	MD Reference:	WELL @ 5077.0ft (RKB - 13')
Site Error:	0.0ft	North Reference:	True
Reference Well:	SRC Kiehn C-4CHZ	Survey Calculation Method:	Minimum Curvature
Well Error:	0.0ft	Output errors are at	2.00 sigma
Reference Wellbore	Wellbore #1	Database:	Landmark
Reference Design:	Plan #2 (4-25-14)	Offset TVD Reference:	Offset Datum

Offset Design SRC Kiehn Pad Sec.4-T4N-R68W - SRC Kiehn C-4NHZ - Wellbore #1 - Plan #2 (4-25-14)												Offset Site Error:	0.0 ft
Survey Program: 0-MWD												Offset Well Error:	0.0 ft
Reference	Offset	Semi Major Axis		Distance									
Measured Depth (ft)	Vertical Depth (ft)	Measured Depth (ft)	Vertical Depth (ft)	Reference (ft)	Offset (ft)	Highside Toolface (°)	Offset Wellbore Centre +N/-S (ft)	+E/-W (ft)	Between Centres (ft)	Between Ellipses (ft)	Minimum Separation (ft)	Separation Factor	Warning
10,200.0	7,000.0	10,229.3	7,000.0	67.0	67.3	90.00	3,346.8	219.4	219.7	85.7	133.97	1.640	
10,300.0	7,000.0	10,329.3	7,000.0	68.9	69.2	90.00	3,446.6	212.9	219.7	81.9	137.77	1.595	
10,400.0	7,000.0	10,429.3	7,000.0	70.8	71.1	90.00	3,546.4	206.4	219.7	78.1	141.57	1.552	
10,500.0	7,000.0	10,529.3	7,000.0	72.7	73.0	90.00	3,646.2	199.9	219.7	74.3	145.38	1.511	
10,600.0	7,000.0	10,629.3	7,000.0	74.6	74.9	90.00	3,746.0	193.4	219.7	70.5	149.19	1.473	Level 3
10,700.0	7,000.0	10,729.3	7,000.0	76.5	76.8	90.00	3,845.8	186.8	219.7	66.7	153.01	1.436	Level 3
10,800.0	7,000.0	10,829.3	7,000.0	78.4	78.7	90.00	3,945.6	180.3	219.7	62.9	156.83	1.401	Level 3
10,900.0	7,000.0	10,929.3	7,000.0	80.3	80.6	90.00	4,045.3	173.8	219.7	59.0	160.65	1.368	Level 3
11,000.0	7,000.0	11,029.3	7,000.0	82.2	82.5	90.00	4,145.1	167.3	219.7	55.2	164.48	1.336	Level 3
11,100.0	7,000.0	11,129.3	7,000.0	84.1	84.4	90.00	4,244.9	160.8	219.7	51.4	168.31	1.305	Level 3
11,200.0	7,000.0	11,229.3	7,000.0	86.0	86.3	90.00	4,344.7	154.2	219.7	47.6	172.14	1.276	Level 3
11,250.9	7,000.0	11,280.2	7,000.0	87.0	87.3	90.00	4,395.5	150.9	219.7	45.6	174.10	1.262	Level 3
11,293.3	7,000.0	11,308.2	7,000.0	87.8	87.9	90.00	4,423.5	149.1	220.2	44.7	175.45	1.255	Level 3, SF

Company:	Synergy Resources	Local Co-ordinate Reference:	Well SRC Kiehn C-4CHZ
Project:	SEC.4-T4N-R68W	TVD Reference:	WELL @ 5077.0ft (RKB - 13')
Reference Site:	SRC Kiehn Pad Sec.4-T4N-R68W	MD Reference:	WELL @ 5077.0ft (RKB - 13')
Site Error:	0.0ft	North Reference:	True
Reference Well:	SRC Kiehn C-4CHZ	Survey Calculation Method:	Minimum Curvature
Well Error:	0.0ft	Output errors are at	2.00 sigma
Reference Wellbore	Wellbore #1	Database:	Landmark
Reference Design:	Plan #2 (4-25-14)	Offset TVD Reference:	Offset Datum

Reference Depths are relative to WELL @ 5077.0ft (RKB - 13')

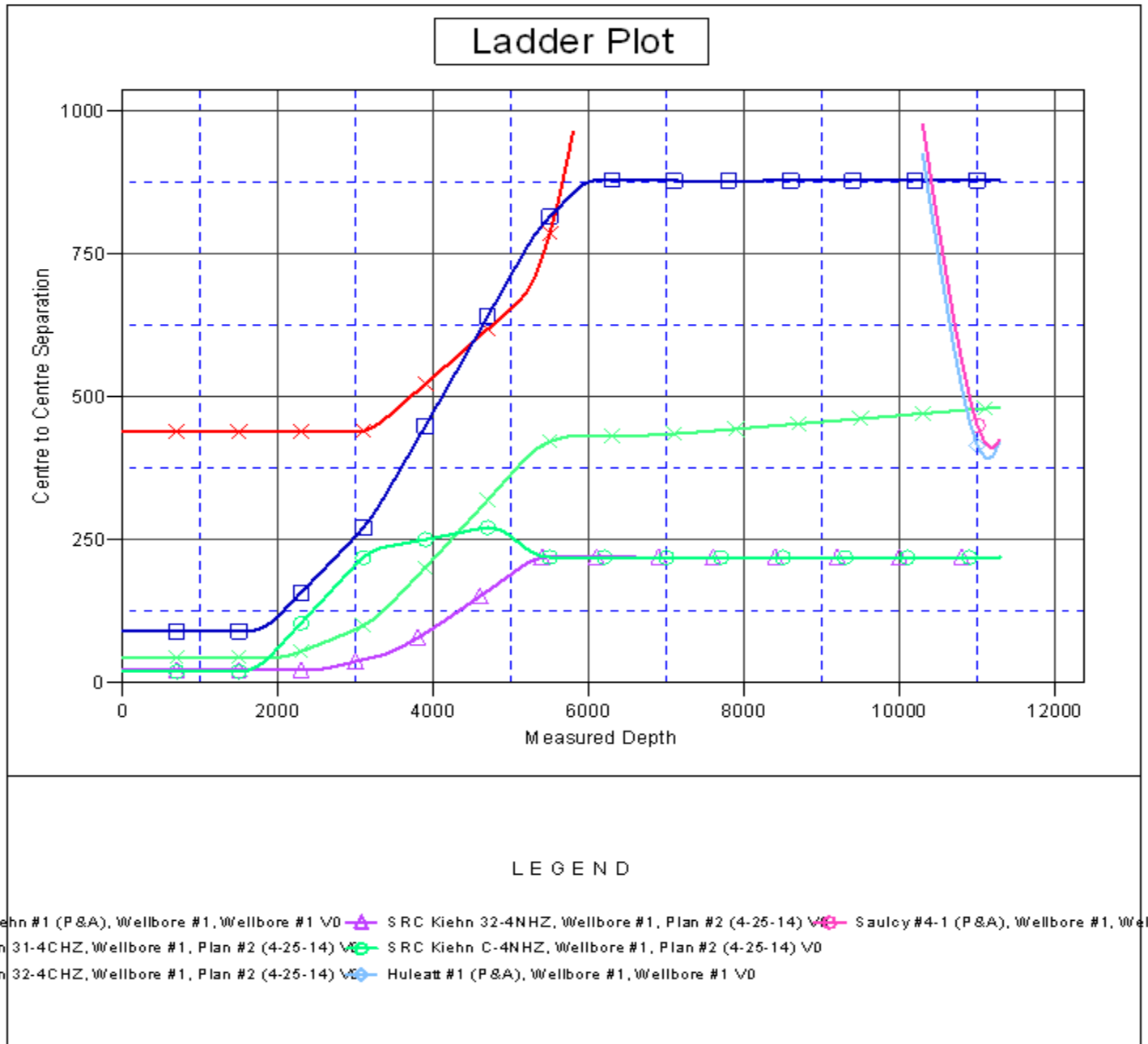
Offset Depths are relative to Offset Datum

Central Meridian is -105.500000 °

Coordinates are relative to: SRC Kiehn C-4CHZ

Coordinate System is US State Plane 1983, Colorado Northern Zone

Grid Convergence at Surface is: 0.32°



Company: Synergy Resources
Project: SEC.4-T4N-R68W
Reference Site: SRC Kiehn Pad Sec.4-T4N-R68W
Site Error: 0.0ft
Reference Well: SRC Kiehn C-4CHZ
Well Error: 0.0ft
Reference Wellbore: Wellbore #1
Reference Design: Plan #2 (4-25-14)

Local Co-ordinate Reference: Well SRC Kiehn C-4CHZ
TVD Reference: WELL @ 5077.0ft (RKB - 13')
MD Reference: WELL @ 5077.0ft (RKB - 13')
North Reference: True
Survey Calculation Method: Minimum Curvature
Output errors are at 2.00 sigma
Database: Landmark
Offset TVD Reference: Offset Datum

Reference Depths are relative to WELL @ 5077.0ft (RKB - 13')

Offset Depths are relative to Offset Datum

Central Meridian is -105.500000 °

Coordinates are relative to: SRC Kiehn C-4CHZ

Coordinate System is US State Plane 1983, Colorado Northern Zone

Grid Convergence at Surface is: 0.32°

