

**ANADARKO PETROLEUM CORP - EBUS
DO NOT MAIL - PO BOX 4995
THE WOODLANDS, Texas**

Brotemarkle 4N-13HZ

Majors 42

Post Job Summary

Cement Surface Casing

Date Prepared: 1/20/2014
Version: 1

Service Supervisor: WHIPPLE, WESLEY

Submitted by: TRIER, DEREK

HALLIBURTON

Wellbore Geometry

Job Tubulars					MD		Shoe Joint Length ft
Type	Description	Size in	ID in	Wt lbm/ft	Top ft	Bottom ft	
Casing	9 5/8" Surface Casing	9.63	8.921	36.00	0.00	1,297.00	42.00
Open Hole Section	13 1/2" Open Hole Section		13.500		0.00	1,307.00	0.00

HALLIBURTON

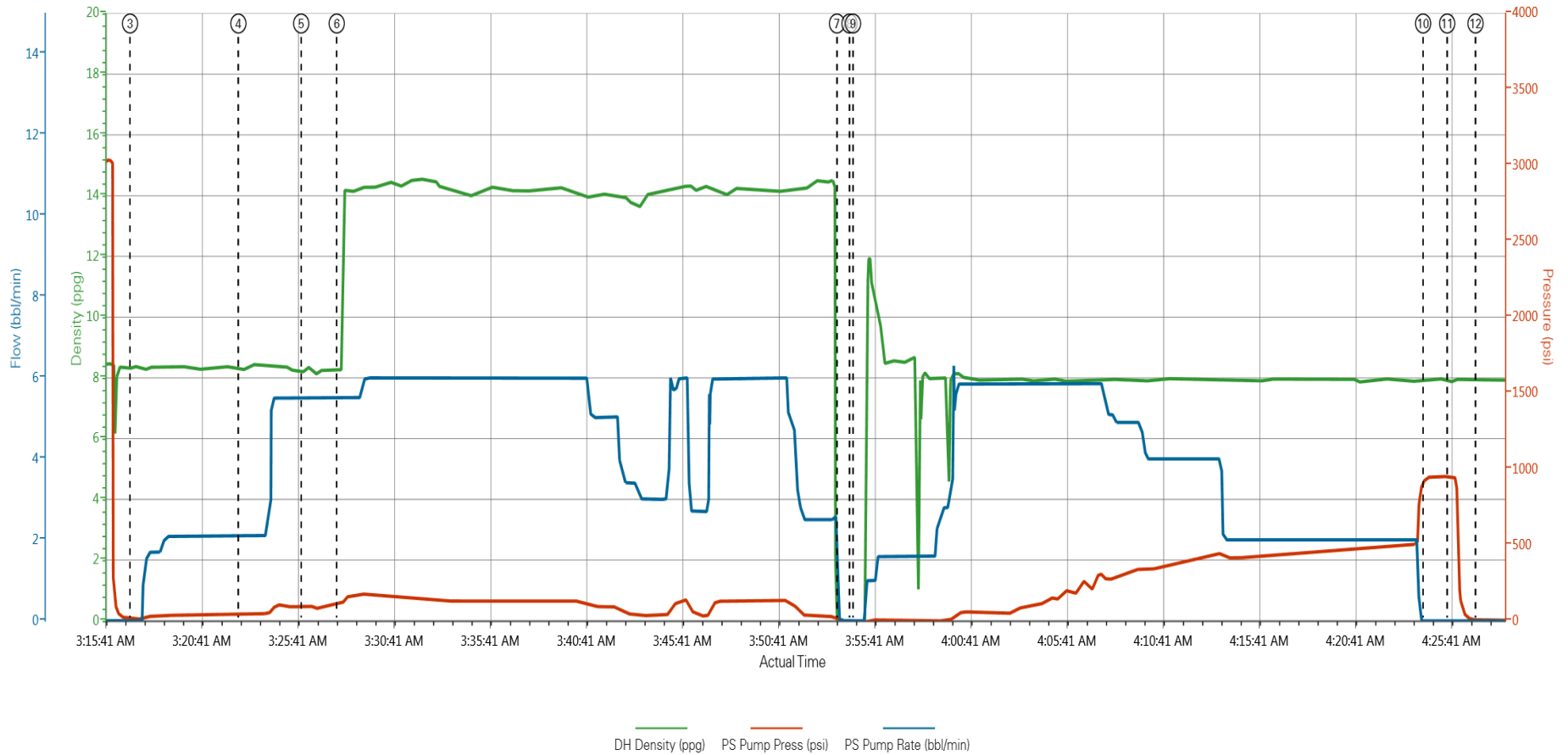
Pumping Schedule

Stage /Plug #	Fluid #	Fluid Type	Fluid Name	Surface Density lbm/gal	Avg Rate bbl/min	Surface Volume	Downhole Volume
1	1	Spacer	Fresh Water Spacer	8.33	2.00	10.0 bbl	10.0 bbl
1	2	Spacer	Mud Flush	8.40	5.50	20.0 bbl	20.0 bbl
1	1	Spacer	Fresh Water Spacer	8.33	5.50	10.0 bbl	10.0 bbl
1	3	Cement Slurry	SwiftCem B2	14.20	6.00	486.0 sacks	486.0 sacks

HALLIBURTON

Data Acquisition

ANADARKO BROTEMARKLE 4N-13HZ



- ① Start Job 8.4;0;0
- ② Test Lines 8.32;22;0
- ③ Pump Spacer 1 8.35;13;0
- ④ Pump Spacer 2 8.31;45;2.1
- ⑤ Pump Spacer 1 8.23;92;5.5
- ⑥ Pump Cement 8.22;114;5.5
- ⑦ Shutdown -0.42;7;0
- ⑧ Drop Top Plug -0.18;-8;0
- ⑨ Pump Displacement -0.17;-8;0
- ⑩ Bump Plug 7.9;934;0
- ⑪ Other 7.85;950;0
- ⑫ End Job 7.94;6;0

HALLIBURTON

Service Supervisor Reports

Job Log

Date/Time	Chart #	Activity Code	Pump Rate	Cum Vol	Pump	Pressure (psig)	Comments
01/11/2014 21:20		Call Out					CREW CALLED OUT BY ARS OFFICE @ 2120. REQUESTED CREW ON LOCATION @ 0230 1/12/14
01/12/2014 01:50		Crew Leave Yard					CREW PRE TRIPPED EQUIPMENT TO ENSURE WORKING QUALITY, HELD PRE JOURNEY SAFETY MEETING TO DISCUSS ROUTE TRAVELED AND POTENTIAL DRIVING HAZARDS
01/12/2014 02:10		Arrive At Loc					CREW ARRIVED ON LOCATION, AND MET WITH COMPANY REP TO DISCUSS JOB DETAILS
01/12/2014 02:10		Casing on Bottom					RIG LANDED CASING ON BOTTOM UPON ARRIVAL TO LOCATION
01/12/2014 02:15		Rig-Up Equipment					CREW HELD A SITE ASSESMENT AND HAZARD HUNT PRIOR TO RIG UP, COMMENCED RIG UP OF EQUIPMENT
01/12/2014 03:00		Safety Meeting					HELD PRE JOB SAFETY MEETING WITH ALL HANDS ON LOCATION TO DISCUSS JOB PROCESS, DETAILS AND ANY POTENTIAL RISKS THAT COULD OCCUR DURING CEMENTING
01/12/2014 03:14		Start Job					
01/12/2014 03:16		Test Lines				3000.0	PRESSURE TESTED PUMPS AND LINES TO 3000PSI, FOUND NO LEAKS IN IRON AND PRESSURE HELD
01/12/2014 03:18		Pump Spacer 1	2	10		45.0	PUMP FRESH WATER SPACER
01/12/2014 03:22		Pump Spacer 2	5.5	12		96.0	PUMP MUD FLUSH SPACER
01/12/2014 03:27		Pump Spacer 1	5.5	10		140.0	PUMP FRESH WATER SPACER
01/12/2014 03:29		Pump Cement	6	133		133.0	MIX AND PUMP 486 SKS OF SWIFCEM @ 14.2PPG. DENSITY VERIFIED BY MUD SCALES
01/12/2014 03:53		Shutdown					
01/12/2014 03:54		Drop Top Plug					DROP TOP PLUG FROM HES PLUG CONTAINER. WITNESSED BY HES SUPERVISOR AND DRILLER
01/12/2014 03:55		Pump Displacement	6	97		200.0	PUMP FRESH WATER DISPLACEMENT. RECIEVED 18 BBLS OF CEMENT TO SURFACE
01/12/2014 04:24		Bump Plug				950.0	BUMP PLUG 500 PSI OVER FINAL PUMPING PRESSURE
01/12/2014 04:27		Check Floats				950.0	RELEASED PRESSURE BACK TO PUMP TRUCK, RECIEVED 1BBL BACK.
01/12/2014 04:28		End Job					

The Road to Excellence Starts with Safety

Sold To #: 300466	Ship To #: 3117160	Quote #:	Sales Order #: 901027229
Customer: ANADARKO PETROLEUM CORP - EBUS		Customer Rep: Porter, Bob	
Well Name: Brotemarkle		Well #: 4N-13HZ	API/UWI #: 05-123-36519
Field: WATTENBERG	City (SAP): PLATTEVILLE	County/Parish: Weld	State: Colorado
Lat: N 40.219 deg. OR N 40 deg. 13 min. 7.608 secs.		Long: W 104.73 deg. OR W -105 deg. 16 min. 12.986 secs.	
Contractor: Majors		Rig/Platform Name/Num: Majors 42	
Job Purpose: Cement Surface Casing			
Well Type: Development Well		Job Type: Cement Surface Casing	
Sales Person: PLIENESS, RYAN		Srvc Supervisor: WHIPPLE, WESLEY	MBU ID Emp #: 518611

Job Personnel

HES Emp Name	Exp Hrs	Emp #	HES Emp Name	Exp Hrs	Emp #	HES Emp Name	Exp Hrs	Emp #
BARNES, BRIAN L	2.8	485204	DEY, JERRY A	2.8	505015	NIELSON, BRANDON K	2.8	479703
WHIPPLE, WESLEY Morgan	2.8	518611						

Equipment

HES Unit #	Distance-1 way	HES Unit #	Distance-1 way	HES Unit #	Distance-1 way	HES Unit #	Distance-1 way
10977079	18 mile	11106651	18 mile	11562546C	18 mile	11812069C	18 mile
12010172	18 mile						

Job

Job Times

Formation Name	Formation Depth (MD)	Top	Bottom	Called Out	Date	Time	Time Zone
					11 - Jan - 2014	21:20	MST
Form Type			BHST	On Location	12 - Jan - 2014	02:10	MST
Job depth MD	1307. ft		Job Depth TVD	1307. ft	Job Started	12 - Jan - 2014	03:14
Water Depth			Wk Ht Above Floor	3. ft	Job Completed	12 - Jan - 2014	04:28
Perforation Depth (MD)	<i>From</i>		<i>To</i>		Departed Loc	12 - Jan - 2014	05:00

Well Data

Description	New / Used	Max pressure psig	Size in	ID in	Weight lbm/ft	Thread	Grade	Top MD ft	Bottom MD ft	Top TVD ft	Bottom TVD ft
13 1/2" Open Hole Section				13.5				.	1307.		
9 5/8" Surface Casing	Unknown		9.625	8.921	36.		J-55	.	1297.		

Sales/Rental/3rd Party (HES)

Description	Qty	Qty uom	Depth	Supplier
CMT CASING EQUIPMENT BOM	1	JOB		
MILEAGE FOR CEMENTING CREW,ZI	40	MI		
Description	Qty	Qty uom	Depth	Supplier
ZI FUEL SURCHG-CARS/PICKUPS<1 1/2TON	40	MI		
KIT,HALL WELD-A	1	EA		
CNTRLZR, 9 5/8"x13 3/4',#500-0963-1375	6	EA		
BASKET - CEMENT - 9-5/8 CSG X 12-1/4	1	EA		
PLUG,CMTG, TOP,9 5/8,HWE,8.16 MIN/9.06 MA	1	EA		

COLLAR-STOP-9 5/8"-FRICTION-HINGED						2	EA		
Fluid Data									
Stage/Plug #: 1									
Fluid #	Stage Type	Fluid Name	Qty	Qty uom	Mixing Density lbm/gal	Yield ft ³ /sk	Mix Fluid Gal/sk	Rate bbl/min	Total Mix Fluid Gal/sk
1	Fresh Water Spacer		10.0	bbl	8.33			2.0	
2	Mud Flush		12.0	bbl	8.4			5.5	
3.5 lbm/bbl		MUD FLUSH III, 40 LB SACK (101633304)							
42 gal/bbl		MUD FLUSH III - SBM (528788)							
1	Fresh Water Spacer		10.0	bbl	8.33			5.5	
3	SwiftCem B2	SWIFTCEM (TM) SYSTEM (452990)	486.0	sacks	14.2	1.54	7.66	6.0	7.66
7.66 Gal		FRESH WATER							
Calculated Values			Pressures			Volumes			
Displacement	97	Shut In: Instant		Lost Returns		Cement Slurry		Pad	
Top Of Cement		5 Min		Cement Returns	18	Actual Displacement	97	Treatment	
Frac Gradient		15 Min		Spacers	32	Load and Breakdown		Total Job	
Rates									
Circulating		Mixing		Displacement		Avg. Job			
Cement Left In Pipe	Amount	42 ft	Reason	Shoe Joint					
Frac Ring # 1 @	ID	Frac ring # 2 @	ID	Frac Ring # 3 @	ID	Frac Ring # 4 @	ID		
The Information Stated Herein Is Correct				Customer Representative Signature					

