

# Synergy Resources

Well Name: **SRC Kiehn 31-4CHZ**

Surface Location: SRC Kiehn Pad Sec.4-T4N-R68W

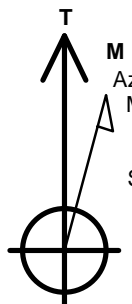
North American Datum 1983 , US State Plane 1983 , Colorado Northern Zone

Ground Elevation: 5064.0

+N/-S	+E/-W	Northing	Easting	Latitude	Longitude	Slot
0.0	0.0	1365559.30	3137864.22	40.335806	-105.005460	
RKB - 13' WELL @ 5077.0ft (RKB - 13')						

## WELLBORE TARGET DETAILS

Name	TVD	+N/-S	+E/-W	Shape
SHL 201'FSL & 1828'FEL	1.0	0.0	0.0	Point
BHL 470'FNL & 2472'FEL	7000.0	4426.4	-862.7	Point



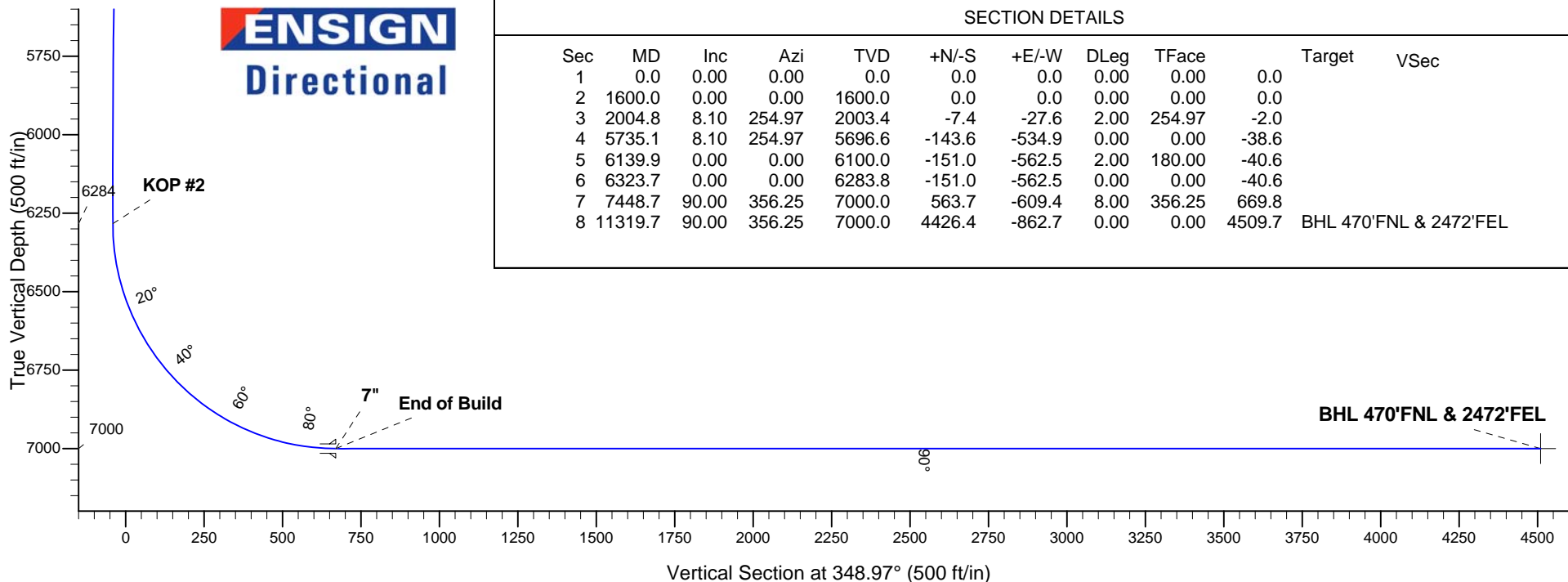
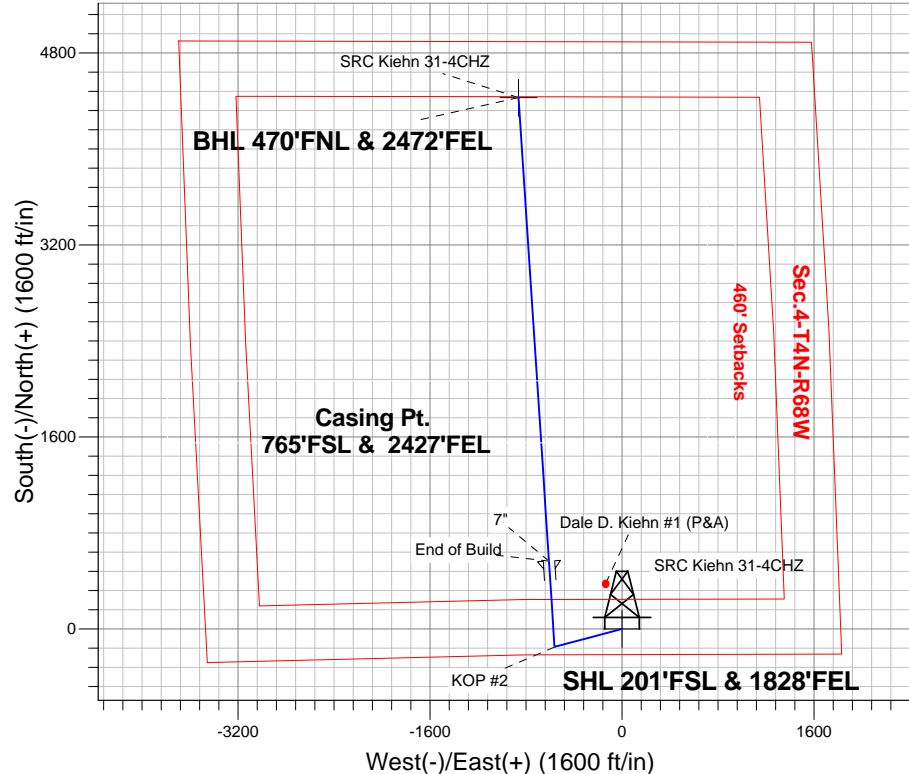
Azimuths to True North  
Magnetic North: 8.60°

Magnetic Field  
Strength: 52768.9snT  
Dip Angle: 66.86°  
Date: 4/25/2014  
Model: IGRF2010

## ANNOTATIONS

TVD	MD	Annotation
1600.0	1600.0	KOP #1
6283.8	6323.7	KOP #2
7000.0	7448.7	End of Build

SRC Kiehn Pad Sec.4-T4N-R68W  
SRC Kiehn 31-4CHZ  
Plan #2 (4-25-14)  
9:31, April 29 2014





## **Synergy Resources**

**SEC.4-T4N-R68W**

**SRC Kiehn Pad Sec.4-T4N-R68W**

**SRC Kiehn 31-4CHZ**

**Wellbore #1**

**Plan: Plan #2 (4-25-14)**

## **Standard Planning Report**

**29 April, 2014**

Plan Sections										
Measured Depth (ft)	Inclination (°)	Azimuth (°)	Vertical Depth (ft)	+N/-S (ft)	+E/-W (ft)	Dogleg Rate (°/100ft)	Build Rate (°/100ft)	Turn Rate (°/100ft)	TFO (°)	Target
0.0	0.00	0.00	0.0	0.0	0.0	0.00	0.00	0.00	0.00	
1,600.0	0.00	0.00	1,600.0	0.0	0.0	0.00	0.00	0.00	0.00	
2,004.8	8.10	254.97	2,003.4	-7.4	-27.6	2.00	2.00	0.00	254.97	
5,735.1	8.10	254.97	5,696.6	-143.6	-534.9	0.00	0.00	0.00	0.00	
6,139.9	0.00	0.00	6,100.0	-151.0	-562.5	2.00	-2.00	0.00	180.00	
6,323.7	0.00	0.00	6,283.8	-151.0	-562.5	0.00	0.00	0.00	0.00	
7,448.7	90.00	356.25	7,000.0	563.7	-609.4	8.00	8.00	0.00	356.25	
11,319.7	90.00	356.25	7,000.0	4,426.4	-862.7	0.00	0.00	0.00	0.00	BHL 470'FNL & 247

<b>Database:</b>	Landmark	<b>Local Co-ordinate Reference:</b>	Well SRC Kiehn 31-4CHZ
<b>Company:</b>	Synergy Resources	<b>TVD Reference:</b>	WELL @ 5077.0ft (RKB - 13')
<b>Project:</b>	SEC.4-T4N-R68W	<b>MD Reference:</b>	WELL @ 5077.0ft (RKB - 13')
<b>Site:</b>	SRC Kiehn Pad Sec.4-T4N-R68W	<b>North Reference:</b>	True
<b>Well:</b>	SRC Kiehn 31-4CHZ	<b>Survey Calculation Method:</b>	Minimum Curvature
<b>Wellbore:</b>	Wellbore #1		
<b>Design:</b>	Plan #2 (4-25-14)		

Planned Survey									
Measured Depth (ft)	Inclination (°)	Azimuth (°)	Vertical Depth (ft)	+N/-S (ft)	+E/-W (ft)	Vertical Section (ft)	Dogleg Rate (°/100ft)	Build Rate (°/100ft)	Turn Rate (°/100ft)
0.0	0.00	0.00	0.0	0.0	0.0	0.0	0.00	0.00	0.00
1.0	0.00	0.00	1.0	0.0	0.0	0.0	0.00	0.00	0.00
<b>SHL 201'FSL &amp; 1828'FEL</b>									
100.0	0.00	0.00	100.0	0.0	0.0	0.0	0.00	0.00	0.00
200.0	0.00	0.00	200.0	0.0	0.0	0.0	0.00	0.00	0.00
300.0	0.00	0.00	300.0	0.0	0.0	0.0	0.00	0.00	0.00
400.0	0.00	0.00	400.0	0.0	0.0	0.0	0.00	0.00	0.00
500.0	0.00	0.00	500.0	0.0	0.0	0.0	0.00	0.00	0.00
600.0	0.00	0.00	600.0	0.0	0.0	0.0	0.00	0.00	0.00
700.0	0.00	0.00	700.0	0.0	0.0	0.0	0.00	0.00	0.00
800.0	0.00	0.00	800.0	0.0	0.0	0.0	0.00	0.00	0.00
900.0	0.00	0.00	900.0	0.0	0.0	0.0	0.00	0.00	0.00
1,000.0	0.00	0.00	1,000.0	0.0	0.0	0.0	0.00	0.00	0.00
1,100.0	0.00	0.00	1,100.0	0.0	0.0	0.0	0.00	0.00	0.00
1,200.0	0.00	0.00	1,200.0	0.0	0.0	0.0	0.00	0.00	0.00
1,300.0	0.00	0.00	1,300.0	0.0	0.0	0.0	0.00	0.00	0.00
1,400.0	0.00	0.00	1,400.0	0.0	0.0	0.0	0.00	0.00	0.00
1,500.0	0.00	0.00	1,500.0	0.0	0.0	0.0	0.00	0.00	0.00
1,600.0	0.00	0.00	1,600.0	0.0	0.0	0.0	0.00	0.00	0.00
<b>KOP #1</b>									
1,700.0	2.00	254.97	1,700.0	-0.5	-1.7	-0.1	2.00	2.00	0.00
1,800.0	4.00	254.97	1,799.8	-1.8	-6.7	-0.5	2.00	2.00	0.00
1,900.0	6.00	254.97	1,899.5	-4.1	-15.2	-1.1	2.00	2.00	0.00
2,000.0	8.00	254.97	1,998.7	-7.2	-26.9	-1.9	2.00	2.00	0.00
2,004.8	8.10	254.97	2,003.4	-7.4	-27.6	-2.0	2.00	2.00	0.00
2,100.0	8.10	254.97	2,097.7	-10.9	-40.5	-2.9	0.00	0.00	0.00
2,200.0	8.10	254.97	2,196.7	-14.5	-54.1	-3.9	0.00	0.00	0.00
2,300.0	8.10	254.97	2,295.7	-18.2	-67.7	-4.9	0.00	0.00	0.00
2,400.0	8.10	254.97	2,394.7	-21.8	-81.3	-5.9	0.00	0.00	0.00
2,500.0	8.10	254.97	2,493.7	-25.5	-94.9	-6.9	0.00	0.00	0.00
2,600.0	8.10	254.97	2,592.7	-29.1	-108.5	-7.8	0.00	0.00	0.00
2,700.0	8.10	254.97	2,691.7	-32.8	-122.1	-8.8	0.00	0.00	0.00
2,800.0	8.10	254.97	2,790.7	-36.4	-135.7	-9.8	0.00	0.00	0.00
2,900.0	8.10	254.97	2,889.7	-40.1	-149.3	-10.8	0.00	0.00	0.00
3,000.0	8.10	254.97	2,988.7	-43.7	-162.9	-11.8	0.00	0.00	0.00
3,100.0	8.10	254.97	3,087.7	-47.4	-176.5	-12.7	0.00	0.00	0.00
3,200.0	8.10	254.97	3,186.7	-51.0	-190.1	-13.7	0.00	0.00	0.00
3,300.0	8.10	254.97	3,285.7	-54.7	-203.7	-14.7	0.00	0.00	0.00
3,400.0	8.10	254.97	3,384.8	-58.3	-217.3	-15.7	0.00	0.00	0.00
3,500.0	8.10	254.97	3,483.8	-62.0	-230.9	-16.7	0.00	0.00	0.00
3,600.0	8.10	254.97	3,582.8	-65.6	-244.5	-17.7	0.00	0.00	0.00
3,700.0	8.10	254.97	3,681.8	-69.3	-258.1	-18.6	0.00	0.00	0.00
3,800.0	8.10	254.97	3,780.8	-72.9	-271.7	-19.6	0.00	0.00	0.00
3,900.0	8.10	254.97	3,879.8	-76.6	-285.3	-20.6	0.00	0.00	0.00
4,000.0	8.10	254.97	3,978.8	-80.2	-298.9	-21.6	0.00	0.00	0.00
4,100.0	8.10	254.97	4,077.8	-83.9	-312.5	-22.6	0.00	0.00	0.00
4,200.0	8.10	254.97	4,176.8	-87.6	-326.1	-23.5	0.00	0.00	0.00
4,300.0	8.10	254.97	4,275.8	-91.2	-339.7	-24.5	0.00	0.00	0.00
4,400.0	8.10	254.97	4,374.8	-94.9	-353.3	-25.5	0.00	0.00	0.00
4,500.0	8.10	254.97	4,473.8	-98.5	-366.9	-26.5	0.00	0.00	0.00
4,600.0	8.10	254.97	4,572.8	-102.2	-380.5	-27.5	0.00	0.00	0.00
4,700.0	8.10	254.97	4,671.8	-105.8	-394.1	-28.5	0.00	0.00	0.00
4,800.0	8.10	254.97	4,770.8	-109.5	-407.7	-29.4	0.00	0.00	0.00
4,900.0	8.10	254.97	4,869.8	-113.1	-421.3	-30.4	0.00	0.00	0.00

<b>Database:</b>	Landmark	<b>Local Co-ordinate Reference:</b>	Well SRC Kiehn 31-4CHZ
<b>Company:</b>	Synergy Resources	<b>TVD Reference:</b>	WELL @ 5077.0ft (RKB - 13')
<b>Project:</b>	SEC.4-T4N-R68W	<b>MD Reference:</b>	WELL @ 5077.0ft (RKB - 13')
<b>Site:</b>	SRC Kiehn Pad Sec.4-T4N-R68W	<b>North Reference:</b>	True
<b>Well:</b>	SRC Kiehn 31-4CHZ	<b>Survey Calculation Method:</b>	Minimum Curvature
<b>Wellbore:</b>	Wellbore #1		
<b>Design:</b>	Plan #2 (4-25-14)		

Planned Survey									
Measured Depth (ft)	Inclination (°)	Azimuth (°)	Vertical Depth (ft)	+N/-S (ft)	+E/-W (ft)	Vertical Section (ft)	Dogleg Rate (°/100ft)	Build Rate (°/100ft)	Turn Rate (°/100ft)
5,000.0	8.10	254.97	4,968.8	-116.8	-434.9	-31.4	0.00	0.00	0.00
5,100.0	8.10	254.97	5,067.8	-120.4	-448.6	-32.4	0.00	0.00	0.00
5,200.0	8.10	254.97	5,166.8	-124.1	-462.2	-33.4	0.00	0.00	0.00
5,300.0	8.10	254.97	5,265.8	-127.7	-475.8	-34.3	0.00	0.00	0.00
5,400.0	8.10	254.97	5,364.8	-131.4	-489.4	-35.3	0.00	0.00	0.00
5,500.0	8.10	254.97	5,463.8	-135.0	-503.0	-36.3	0.00	0.00	0.00
5,600.0	8.10	254.97	5,562.8	-138.7	-516.6	-37.3	0.00	0.00	0.00
5,700.0	8.10	254.97	5,661.8	-142.3	-530.2	-38.3	0.00	0.00	0.00
5,735.1	8.10	254.97	5,696.6	-143.6	-534.9	-38.6	0.00	0.00	0.00
5,800.0	6.80	254.97	5,760.9	-145.8	-543.1	-39.2	2.00	-2.00	0.00
5,900.0	4.80	254.97	5,860.4	-148.4	-552.8	-39.9	2.00	-2.00	0.00
6,000.0	2.80	254.97	5,960.2	-150.1	-559.2	-40.4	2.00	-2.00	0.00
6,100.0	0.80	254.97	6,060.1	-150.9	-562.2	-40.6	2.00	-2.00	0.00
6,139.9	0.00	0.00	6,100.0	-151.0	-562.5	-40.6	2.00	-2.00	0.00
6,200.0	0.00	0.00	6,160.1	-151.0	-562.5	-40.6	0.00	0.00	0.00
6,300.0	0.00	0.00	6,260.1	-151.0	-562.5	-40.6	0.00	0.00	0.00
6,323.7	0.00	0.00	6,283.8	-151.0	-562.5	-40.6	0.00	0.00	0.00
KOP #2									
6,400.0	6.11	356.25	6,360.0	-146.9	-562.8	-36.6	8.00	8.00	0.00
6,500.0	14.11	356.25	6,458.4	-129.4	-563.9	-19.2	8.00	8.00	0.00
6,600.0	22.11	356.25	6,553.3	-98.5	-565.9	11.6	8.00	8.00	0.00
6,700.0	30.11	356.25	6,643.1	-54.6	-568.8	55.2	8.00	8.00	0.00
6,800.0	38.11	356.25	6,725.8	1.3	-572.5	110.8	8.00	8.00	0.00
6,900.0	46.11	356.25	6,799.9	68.2	-576.9	177.3	8.00	8.00	0.00
7,000.0	54.11	356.25	6,864.0	144.7	-581.9	253.3	8.00	8.00	0.00
7,100.0	62.11	356.25	6,916.8	229.3	-587.4	337.5	8.00	8.00	0.00
7,200.0	70.11	356.25	6,957.3	320.5	-593.4	428.1	8.00	8.00	0.00
7,300.0	78.11	356.25	6,984.6	416.4	-599.7	523.4	8.00	8.00	0.00
7,400.0	86.11	356.25	6,998.3	515.1	-606.2	621.6	8.00	8.00	0.00
7,448.7	90.00	356.25	7,000.0	563.7	-609.4	669.9	7.99	7.99	0.00
End of Build - 7"									
7,500.0	90.00	356.25	7,000.0	614.9	-612.7	720.7	0.00	0.00	0.00
7,600.0	90.00	356.25	7,000.0	714.7	-619.3	819.9	0.00	0.00	0.00
7,700.0	90.00	356.25	7,000.0	814.5	-625.8	919.1	0.00	0.00	0.00
7,800.0	90.00	356.25	7,000.0	914.2	-632.4	1,018.3	0.00	0.00	0.00
7,900.0	90.00	356.25	7,000.0	1,014.0	-638.9	1,117.5	0.00	0.00	0.00
8,000.0	90.00	356.25	7,000.0	1,113.8	-645.4	1,216.7	0.00	0.00	0.00
8,100.0	90.00	356.25	7,000.0	1,213.6	-652.0	1,315.9	0.00	0.00	0.00
8,200.0	90.00	356.25	7,000.0	1,313.4	-658.5	1,415.1	0.00	0.00	0.00
8,300.0	90.00	356.25	7,000.0	1,413.2	-665.1	1,514.3	0.00	0.00	0.00
8,400.0	90.00	356.25	7,000.0	1,513.0	-671.6	1,613.5	0.00	0.00	0.00
8,500.0	90.00	356.25	7,000.0	1,612.7	-678.2	1,712.7	0.00	0.00	0.00
8,600.0	90.00	356.25	7,000.0	1,712.5	-684.7	1,811.9	0.00	0.00	0.00
8,700.0	90.00	356.25	7,000.0	1,812.3	-691.3	1,911.1	0.00	0.00	0.00
8,800.0	90.00	356.25	7,000.0	1,912.1	-697.8	2,010.3	0.00	0.00	0.00
8,900.0	90.00	356.25	7,000.0	2,011.9	-704.3	2,109.5	0.00	0.00	0.00
9,000.0	90.00	356.25	7,000.0	2,111.7	-710.9	2,208.7	0.00	0.00	0.00
9,100.0	90.00	356.25	7,000.0	2,211.5	-717.4	2,307.9	0.00	0.00	0.00
9,200.0	90.00	356.25	7,000.0	2,311.2	-724.0	2,407.1	0.00	0.00	0.00
9,300.0	90.00	356.25	7,000.0	2,411.0	-730.5	2,506.2	0.00	0.00	0.00
9,400.0	90.00	356.25	7,000.0	2,510.8	-737.1	2,605.4	0.00	0.00	0.00
9,500.0	90.00	356.25	7,000.0	2,610.6	-743.6	2,704.6	0.00	0.00	0.00
9,600.0	90.00	356.25	7,000.0	2,710.4	-750.2	2,803.8	0.00	0.00	0.00
9,700.0	90.00	356.25	7,000.0	2,810.2	-756.7	2,903.0	0.00	0.00	0.00

Planned Survey										
Measured Depth (ft)	Inclination (°)	Azimuth (°)	Vertical Depth (ft)	+N/-S (ft)	+E/-W (ft)	Vertical Section (ft)	Dogleg Rate (°/100ft)	Build Rate (°/100ft)	Turn Rate (°/100ft)	
9,800.0	90.00	356.25	7,000.0	2,910.0	-763.2	3,002.2	0.00	0.00	0.00	
9,900.0	90.00	356.25	7,000.0	3,009.7	-769.8	3,101.4	0.00	0.00	0.00	
10,000.0	90.00	356.25	7,000.0	3,109.5	-776.3	3,200.6	0.00	0.00	0.00	
10,100.0	90.00	356.25	7,000.0	3,209.3	-782.9	3,299.8	0.00	0.00	0.00	
10,200.0	90.00	356.25	7,000.0	3,309.1	-789.4	3,399.0	0.00	0.00	0.00	
10,300.0	90.00	356.25	7,000.0	3,408.9	-796.0	3,498.2	0.00	0.00	0.00	
10,400.0	90.00	356.25	7,000.0	3,508.7	-802.5	3,597.4	0.00	0.00	0.00	
10,500.0	90.00	356.25	7,000.0	3,608.5	-809.0	3,696.6	0.00	0.00	0.00	
10,600.0	90.00	356.25	7,000.0	3,708.2	-815.6	3,795.8	0.00	0.00	0.00	
10,700.0	90.00	356.25	7,000.0	3,808.0	-822.1	3,895.0	0.00	0.00	0.00	
10,800.0	90.00	356.25	7,000.0	3,907.8	-828.7	3,994.2	0.00	0.00	0.00	
10,900.0	90.00	356.25	7,000.0	4,007.6	-835.2	4,093.4	0.00	0.00	0.00	
11,000.0	90.00	356.25	7,000.0	4,107.4	-841.8	4,192.6	0.00	0.00	0.00	
11,100.0	90.00	356.25	7,000.0	4,207.2	-848.3	4,291.8	0.00	0.00	0.00	
11,200.0	90.00	356.25	7,000.0	4,307.0	-854.9	4,390.9	0.00	0.00	0.00	
11,300.0	90.00	356.25	7,000.0	4,406.7	-861.4	4,490.1	0.00	0.00	0.00	
11,319.7	90.00	356.25	7,000.0	4,426.4	-862.7	4,509.7	0.00	0.00	0.00	
BHL 470'FNL & 2472'FEL										

Plan Annotations					
	Measured Depth (ft)	Vertical Depth (ft)	Local Coordinates		Comment
			+N/-S	+E/-W	
			(ft)	(ft)	
	1,600.0	1,600.0	0.0	0.0	KOP #1
	6,323.7	6,283.8	-151.0	-562.5	KOP #2
	7,448.7	7,000.0	563.7	-609.4	End of Build



## **Synergy Resources**

**SEC.4-T4N-R68W**

**SRC Kiehn Pad Sec.4-T4N-R68W**

**SRC Kiehn 31-4CHZ**

**Wellbore #1**

**Plan #2 (4-25-14)**

## **Anticollision Report**

**29 April, 2014**





<b>Company:</b>	Synergy Resources	<b>Local Co-ordinate Reference:</b>	Well SRC Kiehn 31-4CHZ
<b>Project:</b>	SEC.4-T4N-R68W	<b>TVD Reference:</b>	WELL @ 5077.0ft (RKB - 13')
<b>Reference Site:</b>	SRC Kiehn Pad Sec.4-T4N-R68W	<b>MD Reference:</b>	WELL @ 5077.0ft (RKB - 13')
<b>Site Error:</b>	0.0ft	<b>North Reference:</b>	True
<b>Reference Well:</b>	SRC Kiehn 31-4CHZ	<b>Survey Calculation Method:</b>	Minimum Curvature
<b>Well Error:</b>	0.0ft	<b>Output errors are at</b>	2.00 sigma
<b>Reference Wellbore</b>	Wellbore #1	<b>Database:</b>	Landmark
<b>Reference Design:</b>	Plan #2 (4-25-14)	<b>Offset TVD Reference:</b>	Offset Datum

Offset Design													Offset Site Error:	0.0 ft
Survey Program: 7790-UNKNOWN													Offset Well Error:	0.0 ft
Reference		Offset		Semi Major Axis			Distance							Warning
Measured Depth (ft)	Vertical Depth (ft)	Measured Depth (ft)	Vertical Depth (ft)	Reference (ft)	Offset (ft)	Highside Toolface (°)	Offset Wellbore Centre +N/-S (ft)	+E/-W (ft)	Between Centres (ft)	Between Ellipses (ft)	Minimum Separation (ft)	Separation Factor		
1,100.0	1,100.0	3,773.0	3,773.0	2.4	75.5	-19.79	378.1	-136.0	401.9	324.0	77.82	5.164		
1,200.0	1,200.0	3,873.0	3,873.0	2.6	77.5	-19.79	378.1	-136.0	401.9	321.8	80.04	5.020		
1,300.0	1,300.0	3,973.0	3,973.0	2.8	79.5	-19.79	378.1	-136.0	401.9	319.6	82.27	4.885		
1,400.0	1,400.0	4,073.0	4,073.0	3.0	81.5	-19.79	378.1	-136.0	401.9	317.4	84.49	4.756		
1,500.0	1,500.0	4,173.0	4,173.0	3.3	83.5	-19.79	378.1	-136.0	401.9	315.1	86.72	4.634		
1,600.0	1,600.0	4,273.0	4,273.0	3.5	85.5	-19.79	378.1	-136.0	401.9	312.9	88.94	4.518		
1,700.0	1,700.0	4,373.0	4,373.0	3.7	87.5	85.49	378.1	-136.0	401.7	310.6	91.15	4.407		
1,800.0	1,799.8	4,472.8	4,472.8	3.9	89.5	86.24	378.1	-136.0	401.3	308.0	93.34	4.300		
1,900.0	1,899.5	4,572.5	4,572.5	4.1	91.4	87.49	378.1	-136.0	400.9	305.3	95.54	4.196		
2,000.0	1,998.7	4,671.7	4,671.7	4.3	93.4	89.22	378.1	-136.0	400.5	302.8	97.75	4.097		
2,039.3	2,037.6	4,710.6	4,710.6	4.4	94.2	90.00	378.1	-136.0	400.5	301.9	98.63	4.061 CC		
2,100.0	2,097.7	4,770.7	4,770.7	4.6	95.4	91.22	378.1	-136.0	400.6	300.6	99.98	4.007		
2,200.0	2,196.7	4,869.7	4,869.7	4.8	97.4	93.21	378.1	-136.0	401.1	298.9	102.21	3.924		
2,300.0	2,295.7	4,968.7	4,968.7	5.1	99.4	95.19	378.1	-136.0	402.2	297.7	104.45	3.850		
2,400.0	2,394.7	5,067.7	5,067.7	5.4	101.4	97.16	378.1	-136.0	403.7	297.0	106.70	3.783		
2,500.0	2,493.7	5,166.7	5,166.7	5.7	103.3	99.12	378.1	-136.0	405.7	296.8	108.95	3.724 ES		
2,600.0	2,592.7	5,265.7	5,265.7	5.9	105.3	101.05	378.1	-136.0	408.2	297.0	111.21	3.671		
2,700.0	2,691.7	5,364.7	5,364.7	6.2	107.3	102.96	378.1	-136.0	411.2	297.7	113.47	3.624		
2,800.0	2,790.7	5,463.7	5,463.7	6.6	109.3	104.84	378.1	-136.0	414.6	298.9	115.72	3.583		
2,900.0	2,889.7	5,562.7	5,562.7	6.9	111.3	106.69	378.1	-136.0	418.4	300.5	117.97	3.547		
3,000.0	2,988.7	5,661.7	5,661.7	7.2	113.2	108.50	378.1	-136.0	422.7	302.5	120.22	3.516		
3,100.0	3,087.7	5,760.7	5,760.7	7.5	115.2	110.27	378.1	-136.0	427.4	305.0	122.47	3.490		
3,200.0	3,186.7	5,859.7	5,859.7	7.8	117.2	112.01	378.1	-136.0	432.6	307.9	124.72	3.468		
3,300.0	3,285.7	5,958.7	5,958.7	8.1	119.2	113.70	378.1	-136.0	438.1	311.1	126.96	3.451		
3,400.0	3,384.8	6,057.8	6,057.8	8.5	121.2	115.35	378.1	-136.0	444.0	314.8	129.20	3.437		
3,500.0	3,483.8	6,156.8	6,156.8	8.8	123.1	116.96	378.1	-136.0	450.2	318.8	131.43	3.426		
3,600.0	3,582.8	6,255.8	6,255.8	9.1	125.1	118.52	378.1	-136.0	456.8	323.2	133.66	3.418		
3,700.0	3,681.8	6,354.8	6,354.8	9.5	127.1	120.04	378.1	-136.0	463.8	327.9	135.88	3.413		
3,800.0	3,780.8	6,453.8	6,453.8	9.8	129.1	121.51	378.1	-136.0	471.0	332.9	138.10	3.411 SF		
3,900.0	3,879.8	6,552.8	6,552.8	10.1	131.1	122.94	378.1	-136.0	478.6	338.3	140.32	3.411		
4,000.0	3,978.8	6,651.8	6,651.8	10.5	133.0	124.32	378.1	-136.0	486.5	343.9	142.53	3.413		
4,100.0	4,077.8	6,750.8	6,750.8	10.8	135.0	125.66	378.1	-136.0	494.6	349.9	144.75	3.417		
4,200.0	4,176.8	6,849.8	6,849.8	11.1	137.0	126.96	378.1	-136.0	503.0	356.0	146.95	3.423		
4,300.0	4,275.8	6,948.8	6,948.8	11.5	139.0	128.21	378.1	-136.0	511.6	362.5	149.16	3.430		
4,400.0	4,374.8	7,047.8	7,047.8	11.8	141.0	129.42	378.1	-136.0	520.5	369.2	151.36	3.439		
4,500.0	4,473.8	7,146.8	7,146.8	12.2	142.9	130.59	378.1	-136.0	529.6	376.1	153.56	3.449		
4,600.0	4,572.8	7,245.8	7,245.8	12.5	144.9	131.72	378.1	-136.0	538.9	383.2	155.76	3.460		
4,700.0	4,671.8	7,344.8	7,344.8	12.8	146.9	132.81	378.1	-136.0	548.5	390.5	157.95	3.472		
4,800.0	4,770.8	7,443.8	7,443.8	13.2	148.9	133.87	378.1	-136.0	558.2	398.0	160.14	3.486		
4,900.0	4,869.8	7,542.8	7,542.8	13.5	150.9	134.89	378.1	-136.0	568.1	405.7	162.33	3.499		
5,000.0	4,968.8	7,641.8	7,641.8	13.9	152.8	135.87	378.1	-136.0	578.2	413.6	164.52	3.514		
5,100.0	5,067.8	7,740.8	7,740.8	14.2	154.8	136.82	378.1	-136.0	588.4	421.7	166.71	3.529		
5,200.0	5,166.8	7,790.0	7,790.0	14.6	155.8	137.28	378.1	-136.0	600.9	432.9	167.95	3.578		
5,300.0	5,265.8	7,790.0	7,790.0	14.9	155.8	137.28	378.1	-136.0	627.2	459.0	168.24	3.728		
5,400.0	5,364.8	7,790.0	7,790.0	15.3	155.8	137.28	378.1	-136.0	667.7	499.2	168.53	3.962		
5,500.0	5,463.8	7,790.0	7,790.0	15.6	155.8	137.28	378.1	-136.0	719.9	551.1	168.82	4.264		
5,600.0	5,562.8	7,790.0	7,790.0	15.9	155.8	137.28	378.1	-136.0	781.4	612.3	169.11	4.621		
5,700.0	5,661.8	7,790.0	7,790.0	16.3	155.8	137.28	378.1	-136.0	850.3	680.9	169.40	5.020		
5,800.0	5,760.9	7,790.0	7,790.0	16.6	155.8	138.27	378.1	-136.0	924.5	754.7	169.84	5.444		

<b>Company:</b>	Synergy Resources	<b>Local Co-ordinate Reference:</b>	Well SRC Kiehn 31-4CHZ
<b>Project:</b>	SEC.4-T4N-R68W	<b>TVD Reference:</b>	WELL @ 5077.0ft (RKB - 13')
<b>Reference Site:</b>	SRC Kiehn Pad Sec.4-T4N-R68W	<b>MD Reference:</b>	WELL @ 5077.0ft (RKB - 13')
<b>Site Error:</b>	0.0ft	<b>North Reference:</b>	True
<b>Reference Well:</b>	SRC Kiehn 31-4CHZ	<b>Survey Calculation Method:</b>	Minimum Curvature
<b>Well Error:</b>	0.0ft	<b>Output errors are at</b>	2.00 sigma
<b>Reference Wellbore</b>	Wellbore #1	<b>Database:</b>	Landmark
<b>Reference Design:</b>	Plan #2 (4-25-14)	<b>Offset TVD Reference:</b>	Offset Datum

Offset Design SRC Kiehn Pad Sec.4-T4N-R68W - SRC Kiehn 22-4CHZ - Wellbore #1 - Plan #2 (4-25-14)													Offset Site Error:	0.0 ft
Survey Program: 0-MWD													Offset Well Error:	0.0 ft
Measured Depth (ft)	Vertical Depth (ft)	Measured Depth (ft)	Vertical Depth (ft)	Reference (ft)	Offset (ft)	Semi Major Axis Highside Toolface (°)	Offset Wellbore Centre +N/-S (ft)	+E/-W (ft)	Between Centres (ft)	Between Ellipses (ft)	Minimum Separation (ft)	Separation Factor	Warning	
0.0	0.0	0.0	0.0	0.0	0.0	-90.92	-0.7	-45.2	45.2					
100.0	100.0	100.0	100.0	0.1	0.1	-90.92	-0.7	-45.2	45.2	44.9	0.22	200.961		
200.0	200.0	200.0	200.0	0.3	0.3	-90.92	-0.7	-45.2	45.2	44.5	0.67	66.987		
300.0	300.0	300.0	300.0	0.6	0.6	-90.92	-0.7	-45.2	45.2	44.0	1.12	40.192		
400.0	400.0	400.0	400.0	0.8	0.8	-90.92	-0.7	-45.2	45.2	43.6	1.57	28.709		
500.0	500.0	500.0	500.0	1.0	1.0	-90.92	-0.7	-45.2	45.2	43.1	2.02	22.329		
600.0	600.0	600.0	600.0	1.2	1.2	-90.92	-0.7	-45.2	45.2	42.7	2.47	18.269		
700.0	700.0	700.0	700.0	1.5	1.5	-90.92	-0.7	-45.2	45.2	42.2	2.92	15.459		
800.0	800.0	800.0	800.0	1.7	1.7	-90.92	-0.7	-45.2	45.2	41.8	3.37	13.397		
900.0	900.0	900.0	900.0	1.9	1.9	-90.92	-0.7	-45.2	45.2	41.3	3.82	11.821		
1,000.0	1,000.0	1,000.0	1,000.0	2.1	2.1	-90.92	-0.7	-45.2	45.2	40.9	4.27	10.577		
1,100.0	1,100.0	1,100.0	1,100.0	2.4	2.4	-90.92	-0.7	-45.2	45.2	40.4	4.72	9.570		
1,200.0	1,200.0	1,200.0	1,200.0	2.6	2.6	-90.92	-0.7	-45.2	45.2	40.0	5.17	8.737 CC, ES		
1,300.0	1,300.0	1,298.4	1,298.4	2.8	2.8	-91.21	-1.0	-46.8	46.9	41.3	5.60	8.369		
1,400.0	1,400.0	1,396.6	1,396.6	3.0	3.0	-91.97	-1.8	-51.8	52.0	46.0	6.02	8.630		
1,500.0	1,500.0	1,494.3	1,493.8	3.3	3.2	-92.94	-3.1	-60.1	60.5	54.0	6.46	9.369		
1,600.0	1,600.0	1,591.4	1,590.2	3.5	3.4	-93.91	-4.9	-71.5	72.4	65.5	6.90	10.482		
1,700.0	1,700.0	1,687.8	1,685.5	3.7	3.7	10.41	-7.2	-86.1	85.9	78.6	7.28	11.804		
1,800.0	1,799.8	1,783.8	1,779.8	3.9	4.0	10.10	-10.0	-103.7	99.4	91.7	7.67	12.960		
1,900.0	1,899.5	1,880.9	1,874.5	4.1	4.3	10.05	-13.2	-124.5	112.5	104.4	8.06	13.950		
2,000.0	1,998.7	1,980.3	1,971.5	4.3	4.7	10.28	-16.7	-146.3	122.8	114.3	8.46	14.505		
2,100.0	2,097.7	2,080.0	2,068.7	4.6	5.0	10.65	-20.1	-168.1	131.2	122.3	8.90	14.740		
2,200.0	2,196.7	2,179.6	2,165.8	4.8	5.5	10.98	-23.6	-190.0	139.6	130.3	9.35	14.932		
2,300.0	2,295.7	2,279.2	2,263.0	5.1	5.9	11.27	-27.0	-211.9	148.1	138.3	9.81	15.094		
2,400.0	2,394.7	2,378.9	2,360.1	5.4	6.3	11.53	-30.5	-233.7	156.5	146.2	10.28	15.231		
2,500.0	2,493.7	2,478.5	2,457.3	5.7	6.7	11.77	-33.9	-255.6	164.9	154.2	10.75	15.347		
2,600.0	2,592.7	2,578.2	2,554.4	5.9	7.2	11.98	-37.4	-277.4	173.4	162.2	11.23	15.445		
2,700.0	2,691.7	2,677.8	2,651.6	6.2	7.6	12.17	-40.8	-299.3	181.8	170.1	11.71	15.529		
2,800.0	2,790.7	2,775.5	2,748.7	6.6	8.1	12.34	-44.2	-321.2	190.3	178.1	12.20	15.600		
2,900.0	2,889.7	2,877.1	2,845.9	6.9	8.5	12.50	-47.7	-343.0	198.7	186.0	12.69	15.661		
3,000.0	2,988.7	2,976.7	2,943.0	7.2	9.0	12.65	-51.1	-364.9	207.2	194.0	13.19	15.713		
3,100.0	3,087.7	3,076.4	3,040.2	7.5	9.5	12.78	-54.6	-386.7	215.6	202.0	13.68	15.758		
3,200.0	3,186.7	3,176.0	3,137.3	7.8	9.9	12.91	-58.0	-408.6	224.1	209.9	14.19	15.796		
3,300.0	3,285.7	3,275.7	3,234.5	8.1	10.4	13.02	-61.5	-430.5	232.6	217.9	14.69	15.829		
3,400.0	3,384.8	3,375.3	3,331.6	8.5	10.9	13.13	-64.9	-452.3	241.0	225.8	15.20	15.857		
3,500.0	3,483.8	3,474.9	3,428.8	8.8	11.3	13.23	-68.4	-474.2	249.5	233.8	15.71	15.881		
3,600.0	3,582.8	3,574.6	3,525.9	9.1	11.8	13.33	-71.8	-496.0	257.9	241.7	16.22	15.901		
3,700.0	3,681.8	3,674.2	3,623.1	9.5	12.3	13.41	-75.3	-517.9	266.4	249.6	16.73	15.919		
3,800.0	3,780.8	3,773.9	3,720.2	9.8	12.8	13.50	-78.7	-539.8	274.8	257.6	17.25	15.934		
3,900.0	3,879.8	3,873.5	3,817.4	10.1	13.2	13.57	-82.2	-561.6	283.3	265.5	17.77	15.946		
4,000.0	3,978.8	3,973.1	3,914.6	10.5	13.7	13.65	-85.6	-583.5	291.8	273.5	18.28	15.957		
4,100.0	4,077.8	4,072.8	4,011.7	10.8	14.2	13.72	-89.1	-605.4	300.2	281.4	18.80	15.966		
4,200.0	4,176.8	4,172.4	4,108.9	11.1	14.7	13.78	-92.5	-627.2	308.7	289.4	19.32	15.974		
4,300.0	4,275.8	4,272.1	4,206.0	11.5	15.2	13.84	-96.0	-649.1	317.1	297.3	19.85	15.980		
4,400.0	4,374.8	4,371.7	4,303.2	11.8	15.6	13.90	-99.4	-670.9	325.6	305.2	20.37	15.986		
4,500.0	4,473.8	4,471.3	4,400.3	12.2	16.1	13.96	-102.9	-692.8	334.1	313.2	20.89	15.990		
4,600.0	4,572.8	4,571.0	4,497.5	12.5	16.6	14.01	-106.3	-714.7	342.5	321.1	21.42	15.993		
4,700.0	4,671.8	4,670.6	4,594.6	12.8	17.1	14.06	-109.7	-736.5	351.0	329.0	21.94	15.996		
4,800.0	4,770.8	4,770.3	4,691.8	13.2	17.6	14.11	-113.2	-758.4	359.4	337.0	22.47	15.998		
4,900.0	4,869.8	4,869.9	4,788.9	13.5	18.0	14.15	-116.6	-780.2	367.9	344.9	23.00	15.999		
5,000.0	4,968.8	4,969.6	4,886.1	13.9	18.5	14.20	-120.1	-802.1	376.4	352.9	23.52	16.000		
5,100.0	5,067.8	5,069.2	4,983.2	14.2	19.0	14.24	-123.5	-824.0	384.8	360.8	24.05	16.000		

CC - Min centre to center distance or convergent point, SF - min separation factor, ES - min ellipse separation

<b>Company:</b>	Synergy Resources	<b>Local Co-ordinate Reference:</b>	Well SRC Kiehn 31-4CHZ
<b>Project:</b>	SEC.4-T4N-R68W	<b>TVD Reference:</b>	WELL @ 5077.0ft (RKB - 13')
<b>Reference Site:</b>	SRC Kiehn Pad Sec.4-T4N-R68W	<b>MD Reference:</b>	WELL @ 5077.0ft (RKB - 13')
<b>Site Error:</b>	0.0ft	<b>North Reference:</b>	True
<b>Reference Well:</b>	SRC Kiehn 31-4CHZ	<b>Survey Calculation Method:</b>	Minimum Curvature
<b>Well Error:</b>	0.0ft	<b>Output errors are at</b>	2.00 sigma
<b>Reference Wellbore</b>	Wellbore #1	<b>Database:</b>	Landmark
<b>Reference Design:</b>	Plan #2 (4-25-14)	<b>Offset TVD Reference:</b>	Offset Datum

Offset Design												Offset Site Error:	0.0 ft
Survey Program: 0-MWD												Offset Well Error:	0.0 ft
Reference		Offset		Semi Major Axis			Distance						Warning
Measured Depth (ft)	Vertical Depth (ft)	Measured Depth (ft)	Vertical Depth (ft)	Reference (ft)	Offset (ft)	Highside Toolface (°)	Offset Wellbore Centre +N/-S (ft)	+E/-W (ft)	Between Centres (ft)	Between Ellipses (ft)	Minimum Separation (ft)	Separation Factor	
5,200.0	5,166.8	5,168.8	5,080.4	14.6	19.5	14.28	-127.0	-845.8	393.3	368.7	24.58	16.000	
5,300.0	5,265.8	5,268.5	5,177.5	14.9	20.0	14.32	-130.4	-867.7	401.8	376.7	25.11	16.000	
5,400.0	5,364.8	5,368.1	5,274.7	15.3	20.5	14.35	-133.9	-889.5	410.2	384.6	25.64	15.999	
5,500.0	5,463.8	5,467.8	5,371.8	15.6	20.9	14.39	-137.3	-911.4	418.7	392.5	26.17	15.998	
5,600.0	5,562.8	5,568.3	5,469.9	15.9	21.4	14.42	-140.8	-933.5	427.1	400.4	26.70	15.996	
5,700.0	5,661.8	5,685.6	5,584.7	16.3	21.8	14.51	-144.5	-956.6	433.4	406.1	27.23	15.914	
5,800.0	5,760.9	5,803.2	5,700.8	16.6	22.2	14.67	-147.4	-975.2	436.3	408.5	27.73	15.735	
5,900.0	5,860.4	5,920.9	5,817.7	16.8	22.5	14.80	-149.6	-989.0	438.3	410.1	28.13	15.578	
6,000.0	5,960.2	6,038.7	5,935.2	17.0	22.7	14.89	-151.0	-998.1	439.6	411.1	28.49	15.429	
6,100.0	6,060.1	6,156.6	6,053.0	17.2	22.9	14.93	-151.7	-1,002.4	440.2	411.4	28.80	15.287	
6,200.0	6,160.1	6,263.8	6,160.1	17.3	23.0	-90.09	-151.7	-1,002.8	440.3	410.7	29.54	14.902	
6,300.0	6,260.1	6,363.8	6,260.1	17.5	23.1	-90.09	-151.7	-1,002.8	440.3	410.4	29.91	14.721	
6,400.0	6,360.0	6,460.9	6,357.1	17.7	23.2	-86.36	-148.0	-1,003.0	440.3	410.4	29.86	14.745	
6,500.0	6,458.4	6,557.2	6,451.9	17.8	23.3	-86.45	-131.8	-1,004.1	440.2	410.1	30.14	14.606	
6,600.0	6,553.3	6,653.6	6,543.8	17.9	23.4	-86.60	-103.0	-1,006.0	440.1	409.8	30.37	14.495	
6,700.0	6,643.1	6,750.0	6,631.1	18.0	23.5	-86.82	-62.1	-1,008.6	440.1	409.5	30.60	14.383	
6,800.0	6,725.8	6,846.9	6,712.4	18.1	23.6	-87.10	-9.6	-1,012.1	439.9	409.0	30.91	14.232	
6,900.0	6,799.9	6,944.0	6,786.1	18.3	23.8	-87.43	53.5	-1,016.2	439.8	408.4	31.40	14.005	
7,000.0	6,864.0	7,041.5	6,850.7	18.5	23.9	-87.81	126.2	-1,021.0	439.7	407.6	32.15	13.676	
7,100.0	6,916.8	7,139.4	6,905.0	18.8	24.2	-88.23	207.3	-1,026.3	439.6	406.4	33.22	13.232	
7,200.0	6,957.3	7,237.7	6,947.9	19.2	24.5	-88.69	295.5	-1,032.1	439.5	404.9	34.64	12.687	
7,300.0	6,984.6	7,336.5	6,978.5	19.9	24.9	-89.18	389.1	-1,038.3	439.5	403.1	36.40	12.072	
7,400.0	6,998.3	7,435.8	6,995.9	20.8	25.5	-89.68	486.6	-1,044.7	439.4	401.0	38.46	11.427	
7,434.8	7,000.3	7,470.5	6,998.8	21.1	25.8	-89.80	521.1	-1,046.9	439.4	400.2	39.24	11.197	
7,500.0	7,000.0	7,535.6	7,000.0	21.8	26.3	-90.00	586.1	-1,051.2	439.4	398.7	40.76	10.780	
7,600.0	7,000.0	7,635.6	7,000.0	23.0	27.1	-90.00	685.9	-1,057.8	439.4	396.1	43.31	10.146	
7,700.0	7,000.0	7,735.6	7,000.0	24.3	28.1	-90.00	785.7	-1,064.3	439.4	393.4	46.04	9.544	
7,800.0	7,000.0	7,835.6	7,000.0	25.6	29.3	-90.00	885.5	-1,070.9	439.4	390.5	48.94	8.980	
7,900.0	7,000.0	7,935.6	7,000.0	27.1	30.5	-90.00	985.2	-1,077.4	439.4	387.5	51.96	8.458	
8,000.0	7,000.0	8,035.6	7,000.0	28.6	31.8	-90.00	1,085.0	-1,084.0	439.5	384.4	55.09	7.977	
8,100.0	7,000.0	8,135.6	7,000.0	30.2	33.1	-90.00	1,184.8	-1,090.5	439.5	381.1	58.32	7.536	
8,200.0	7,000.0	8,235.6	7,000.0	31.8	34.6	-90.00	1,284.6	-1,097.1	439.5	377.9	61.62	7.132	
8,300.0	7,000.0	8,335.6	7,000.0	33.4	36.1	-90.00	1,384.4	-1,103.6	439.5	374.5	64.99	6.763	
8,400.0	7,000.0	8,435.6	7,000.0	35.1	37.6	-90.00	1,484.2	-1,110.2	439.5	371.1	68.41	6.424	
8,500.0	7,000.0	8,535.6	7,000.0	36.8	39.2	-90.00	1,583.9	-1,116.7	439.5	367.6	71.88	6.114	
8,600.0	7,000.0	8,635.6	7,000.0	38.5	40.8	-90.00	1,683.7	-1,123.3	439.5	364.1	75.40	5.829	
8,700.0	7,000.0	8,735.6	7,000.0	40.3	42.4	-90.00	1,783.5	-1,129.8	439.5	360.6	78.95	5.567	
8,800.0	7,000.0	8,835.6	7,000.0	42.0	44.1	-90.00	1,883.3	-1,136.4	439.5	357.0	82.53	5.326	
8,900.0	7,000.0	8,935.6	7,000.0	43.8	45.8	-90.00	1,983.1	-1,142.9	439.5	353.4	86.14	5.103	
9,000.0	7,000.0	9,035.6	7,000.0	45.6	47.5	-90.00	2,082.9	-1,149.5	439.5	349.8	89.77	4.896	
9,100.0	7,000.0	9,135.6	7,000.0	47.4	49.2	-90.00	2,182.7	-1,156.0	439.5	346.1	93.42	4.705	
9,200.0	7,000.0	9,235.6	7,000.0	49.2	50.9	-90.00	2,282.4	-1,162.6	439.5	342.4	97.10	4.527	
9,300.0	7,000.0	9,335.6	7,000.0	51.0	52.7	-90.00	2,382.2	-1,169.1	439.5	338.8	100.79	4.361	
9,400.0	7,000.0	9,435.6	7,000.0	52.9	54.5	-90.00	2,482.0	-1,175.7	439.6	335.1	104.49	4.207	
9,500.0	7,000.0	9,535.6	7,000.0	54.7	56.2	-90.00	2,581.8	-1,182.2	439.6	331.4	108.21	4.062	
9,600.0	7,000.0	9,635.6	7,000.0	56.6	58.0	-90.00	2,681.6	-1,188.8	439.6	327.6	111.94	3.927	
9,700.0	7,000.0	9,735.6	7,000.0	58.4	59.8	-90.00	2,781.4	-1,195.3	439.6	323.9	115.68	3.800	
9,800.0	7,000.0	9,835.6	7,000.0	60.3	61.6	-90.00	2,881.2	-1,201.9	439.6	320.2	119.43	3.681	
9,900.0	7,000.0	9,935.6	7,000.0	62.2	63.5	-90.00	2,980.9	-1,208.4	439.6	316.4	123.19	3.568	
10,000.0	7,000.0	10,035.6	7,000.0	64.0	65.3	-90.00	3,080.7	-1,215.0	439.6	312.6	126.96	3.463	
10,100.0	7,000.0	10,135.6	7,000.0	65.9	67.1	-90.00	3,180.5	-1,221.5	439.6	308.9	130.73	3.363	
10,200.0	7,000.0	10,235.6	7,000.0	67.8	69.0	-90.00	3,280.3	-1,228.1	439.6	305.1	134.52	3.268	

CC - Min centre to center distance or convergent point, SF - min separation factor, ES - min ellipse separation

<b>Company:</b>	Synergy Resources	<b>Local Co-ordinate Reference:</b>	Well SRC Kiehn 31-4CHZ
<b>Project:</b>	SEC.4-T4N-R68W	<b>TVD Reference:</b>	WELL @ 5077.0ft (RKB - 13')
<b>Reference Site:</b>	SRC Kiehn Pad Sec.4-T4N-R68W	<b>MD Reference:</b>	WELL @ 5077.0ft (RKB - 13')
<b>Site Error:</b>	0.0ft	<b>North Reference:</b>	True
<b>Reference Well:</b>	SRC Kiehn 31-4CHZ	<b>Survey Calculation Method:</b>	Minimum Curvature
<b>Well Error:</b>	0.0ft	<b>Output errors are at</b>	2.00 sigma
<b>Reference Wellbore</b>	Wellbore #1	<b>Database:</b>	Landmark
<b>Reference Design:</b>	Plan #2 (4-25-14)	<b>Offset TVD Reference:</b>	Offset Datum

<b>Offset Design</b> SRC Kiehn Pad Sec.4-T4N-R68W - SRC Kiehn 22-4CHZ - Wellbore #1 - Plan #2 (4-25-14)													<b>Offset Site Error:</b> 0.0 ft
Survey Program: 0-MWD													<b>Offset Well Error:</b> 0.0 ft
Reference		Offset		Semi Major Axis			Distance						Warning
Measured Depth (ft)	Vertical Depth (ft)	Measured Depth (ft)	Vertical Depth (ft)	Reference (ft)	Offset (ft)	Highside Toolface (°)	Offset Wellbore Centre +N/-S (ft)	+E/-W (ft)	Between Centres (ft)	Between Ellipses (ft)	Minimum Separation (ft)	Separation Factor	
10,300.0	7,000.0	10,335.6	7,000.0	69.7	70.8	-90.00	3,380.1	-1,234.6	439.6	301.3	138.30	3.179	
10,400.0	7,000.0	10,435.6	7,000.0	71.6	72.7	-90.00	3,479.9	-1,241.2	439.6	297.5	142.10	3.094	
10,500.0	7,000.0	10,535.6	7,000.0	73.4	74.5	-90.00	3,579.7	-1,247.7	439.6	293.7	145.90	3.013	
10,600.0	7,000.0	10,635.6	7,000.0	75.3	76.4	-90.00	3,679.4	-1,254.3	439.6	289.9	149.70	2.937	
10,700.0	7,000.0	10,735.6	7,000.0	77.2	78.3	-90.00	3,779.2	-1,260.8	439.7	286.1	153.51	2.864	
10,800.0	7,000.0	10,835.6	7,000.0	79.1	80.1	-90.00	3,879.0	-1,267.4	439.7	282.3	157.33	2.795	
10,900.0	7,000.0	10,935.6	7,000.0	81.0	82.0	-90.00	3,978.8	-1,273.9	439.7	278.5	161.15	2.728	
11,000.0	7,000.0	11,035.6	7,000.0	82.9	83.9	-90.00	4,078.6	-1,280.5	439.7	274.7	164.97	2.665	
11,100.0	7,000.0	11,135.6	7,000.0	84.8	85.7	-90.00	4,178.4	-1,287.0	439.7	270.9	168.79	2.605	
11,200.0	7,000.0	11,235.6	7,000.0	86.7	87.6	-90.00	4,278.1	-1,293.6	439.7	267.1	172.62	2.547	
11,300.0	7,000.0	11,335.6	7,000.0	88.7	89.5	-90.00	4,377.9	-1,300.2	439.7	263.2	176.45	2.492	
11,319.7	7,000.0	11,355.3	7,000.0	89.0	89.9	-90.00	4,397.6	-1,301.4	439.7	262.6	177.13	2.482 SF	

Offset Design												Offset Site Error:	
Survey Program: 0-MWD												Offset Well Error:	
Reference		Offset		Semi Major Axis			Distance					Warning	
Measured Depth (ft)	Vertical Depth (ft)	Measured Depth (ft)	Vertical Depth (ft)	Reference (ft)	Offset (ft)	Highside Toolface (°)	Offset Wellbore Centre +N/-S (ft)	+E/-W (ft)	Between Centres (ft)	Between Ellipses (ft)	Minimum Separation (ft)		Separation Factor
0.0	0.0	0.0	0.0	0.0	0.0	-90.93	-1.1	-67.5	67.5				
100.0	100.0	100.0	100.0	0.1	0.1	-90.93	-1.1	-67.5	67.5	67.3	0.22	300.202	
200.0	200.0	200.0	200.0	0.3	0.3	-90.93	-1.1	-67.5	67.5	66.8	0.67	100.067	
300.0	300.0	300.0	300.0	0.6	0.6	-90.93	-1.1	-67.5	67.5	66.4	1.12	60.040	
400.0	400.0	400.0	400.0	0.8	0.8	-90.93	-1.1	-67.5	67.5	65.9	1.57	42.886	
500.0	500.0	500.0	500.0	1.0	1.0	-90.93	-1.1	-67.5	67.5	65.5	2.02	33.356	
600.0	600.0	600.0	600.0	1.2	1.2	-90.93	-1.1	-67.5	67.5	65.0	2.47	27.291	
700.0	700.0	700.0	700.0	1.5	1.5	-90.93	-1.1	-67.5	67.5	64.6	2.92	23.092	
800.0	800.0	800.0	800.0	1.7	1.7	-90.93	-1.1	-67.5	67.5	64.1	3.37	20.013	
900.0	900.0	900.0	900.0	1.9	1.9	-90.93	-1.1	-67.5	67.5	63.7	3.82	17.659	
1,000.0	1,000.0	1,000.0	1,000.0	2.1	2.1	-90.93	-1.1	-67.5	67.5	63.2	4.27	15.800 CC, ES	
1,100.0	1,100.0	1,097.7	1,097.7	2.4	2.3	-91.08	-1.3	-69.1	69.2	64.5	4.70	14.715	
1,200.0	1,200.0	1,195.1	1,195.0	2.6	2.5	-91.51	-2.0	-74.1	74.2	69.1	5.12	14.493	
1,300.0	1,300.0	1,292.1	1,291.6	2.8	2.7	-92.10	-3.0	-82.2	82.7	77.1	5.56	14.882	
1,400.0	1,400.0	1,388.5	1,387.3	3.0	3.0	-92.75	-4.5	-93.5	94.5	88.5	6.01	15.729	
1,500.0	1,500.0	1,483.9	1,481.6	3.3	3.2	-93.38	-6.4	-107.9	109.6	103.2	6.48	16.907	
1,600.0	1,600.0	1,578.3	1,574.4	3.5	3.5	-93.95	-8.6	-125.1	128.0	121.0	6.99	18.312	
1,700.0	1,700.0	1,671.8	1,665.6	3.7	3.9	10.64	-11.3	-145.2	148.0	140.7	7.26	20.379	
1,800.0	1,799.8	1,765.5	1,756.5	3.9	4.2	10.45	-14.3	-168.2	167.7	160.0	7.66	21.880	
1,900.0	1,899.5	1,864.0	1,851.6	4.1	4.7	10.46	-17.6	-193.5	185.2	177.1	8.08	22.923	
2,000.0	1,998.7	1,963.0	1,947.2	4.3	5.1	10.66	-20.9	-219.0	199.3	190.8	8.49	23.461	
2,100.0	2,097.7	2,062.2	2,043.0	4.6	5.6	10.98	-24.2	-244.4	211.5	202.6	8.95	23.628	
2,200.0	2,196.7	2,161.5	2,138.9	4.8	6.1	11.26	-27.6	-269.9	223.8	214.4	9.42	23.757	
2,300.0	2,295.7	2,260.7	2,234.7	5.1	6.6	11.51	-30.9	-295.4	236.1	226.2	9.90	23.855	
2,400.0	2,394.7	2,359.9	2,330.6	5.4	7.1	11.74	-34.2	-320.9	248.3	238.0	10.38	23.928	
2,500.0	2,493.7	2,459.2	2,426.4	5.7	7.6	11.95	-37.5	-346.4	260.6	249.7	10.87	23.980	
2,600.0	2,592.7	2,558.4	2,522.3	5.9	8.2	12.14	-40.9	-371.9	272.9	261.5	11.36	24.017	
2,700.0	2,691.7	2,657.7	2,618.1	6.2	8.7	12.31	-44.2	-397.4	285.1	273.3	11.86	24.041	
2,800.0	2,790.7	2,756.9	2,714.0	6.6	9.2								

<b>Company:</b>	Synergy Resources	<b>Local Co-ordinate Reference:</b>	Well SRC Kiehn 31-4CHZ
<b>Project:</b>	SEC.4-T4N-R68W	<b>TVD Reference:</b>	WELL @ 5077.0ft (RKB - 13')
<b>Reference Site:</b>	SRC Kiehn Pad Sec.4-T4N-R68W	<b>MD Reference:</b>	WELL @ 5077.0ft (RKB - 13')
<b>Site Error:</b>	0.0ft	<b>North Reference:</b>	True
<b>Reference Well:</b>	SRC Kiehn 31-4CHZ	<b>Survey Calculation Method:</b>	Minimum Curvature
<b>Well Error:</b>	0.0ft	<b>Output errors are at</b>	2.00 sigma
<b>Reference Wellbore</b>	Wellbore #1	<b>Database:</b>	Landmark
<b>Reference Design:</b>	Plan #2 (4-25-14)	<b>Offset TVD Reference:</b>	Offset Datum

Offset Design												Offset Site Error:	0.0 ft
Survey Program: 0-MWD												Offset Well Error:	0.0 ft
Reference		Offset		Semi Major Axis			Distance						
Measured Depth (ft)	Vertical Depth (ft)	Measured Depth (ft)	Vertical Depth (ft)	Reference (ft)	Offset (ft)	Highside Toolface (°)	Offset Wellbore Centre +N/-S (ft)	+E/-W (ft)	Between Centres (ft)	Between Ellipses (ft)	Minimum Separation (ft)	Separation Factor	Warning
5,200.0	5,166.8	5,138.7	5,014.5	14.6	22.4	14.29	-127.5	-1,034.6	592.4	567.3	25.09	23.605	
5,300.0	5,265.8	5,237.9	5,110.3	14.9	22.9	14.33	-130.8	-1,060.1	604.7	579.0	25.64	23.584	
5,400.0	5,364.8	5,337.1	5,206.2	15.3	23.5	14.36	-134.1	-1,085.6	617.0	590.8	26.18	23.564	
5,500.0	5,463.8	5,436.4	5,302.0	15.6	24.0	14.40	-137.5	-1,111.1	629.3	602.5	26.73	23.544	
5,600.0	5,562.8	5,547.4	5,409.4	15.9	24.6	14.44	-141.1	-1,139.1	641.2	613.9	27.28	23.502	
5,700.0	5,661.8	5,675.8	5,534.6	16.3	25.0	14.54	-144.8	-1,167.0	649.4	621.6	27.84	23.325	
5,800.0	5,760.9	5,804.8	5,661.7	16.6	25.4	14.69	-147.7	-1,189.4	653.9	625.6	28.36	23.062	
5,900.0	5,860.4	5,934.1	5,789.8	16.8	25.8	14.81	-149.9	-1,206.2	657.2	628.4	28.77	22.840	
6,000.0	5,960.2	6,063.6	5,918.8	17.0	26.0	14.89	-151.3	-1,217.2	659.3	630.1	29.13	22.632	
6,100.0	6,060.1	6,193.2	6,048.3	17.2	26.2	14.93	-152.0	-1,222.4	660.3	630.9	29.43	22.438	
6,200.0	6,160.1	6,305.0	6,160.1	17.3	26.3	-90.09	-152.1	-1,222.9	660.4	630.1	30.22	21.851	
6,300.0	6,260.1	6,405.0	6,260.1	17.5	26.4	-90.09	-152.1	-1,222.9	660.4	629.8	30.58	21.597	
6,379.9	6,340.0	6,481.9	6,336.9	17.6	26.5	-86.46	-150.1	-1,223.0	660.3	629.9	30.39	21.730	
6,400.0	6,360.0	6,500.0	6,355.0	17.7	26.5	-86.36	-148.6	-1,223.1	660.4	629.9	30.46	21.676	
6,500.0	6,458.4	6,595.3	6,448.9	17.8	26.6	-86.45	-132.8	-1,224.1	660.3	629.6	30.74	21.477	
6,600.0	6,553.3	6,690.0	6,539.3	17.9	26.7	-86.60	-105.1	-1,226.0	660.2	629.2	30.97	21.319	
6,700.0	6,643.1	6,784.9	6,625.5	18.0	26.8	-86.81	-65.5	-1,228.6	660.1	628.9	31.19	21.160	
6,800.0	6,725.8	6,880.1	6,705.9	18.1	26.9	-87.08	-14.8	-1,231.9	659.9	628.4	31.50	20.947	
6,900.0	6,799.9	6,975.8	6,779.2	18.3	27.0	-87.41	46.5	-1,235.9	659.7	627.7	31.99	20.625	
7,000.0	6,864.0	7,072.0	6,844.0	18.5	27.2	-87.79	117.3	-1,240.6	659.6	626.8	32.71	20.633	
7,100.0	6,916.8	7,168.7	6,899.0	18.8	27.4	-88.21	196.7	-1,245.8	659.4	625.6	33.76	19.154	
7,200.0	6,957.3	7,266.1	6,943.0	19.2	27.7	-88.66	283.3	-1,251.5	659.3	624.1	35.14	18.759	
7,300.0	6,984.6	7,364.2	6,975.1	19.9	28.0	-89.14	375.7	-1,257.6	659.2	622.3	36.87	17.879	
7,400.0	6,998.3	7,463.1	6,994.3	20.8	28.6	-89.64	472.4	-1,263.9	659.1	620.2	38.89	16.950	
7,433.5	7,000.2	7,496.4	6,997.7	21.1	28.8	-89.78	505.4	-1,266.1	659.1	619.5	39.63	16.632	
7,500.0	7,000.0	7,562.8	7,000.0	21.8	29.2	-90.00	571.7	-1,270.4	659.1	618.0	41.15	16.017	
7,600.0	7,000.0	7,662.8	7,000.0	23.0	29.9	-90.00	671.4	-1,277.0	659.1	615.5	43.68	15.091	
7,700.0	7,000.0	7,762.8	7,000.0	24.3	30.8	-90.00	771.2	-1,283.6	659.2	612.8	46.38	14.211	
7,800.0	7,000.0	7,862.8	7,000.0	25.6	31.8	-90.00	871.0	-1,290.1	659.2	609.9	49.25	13.385	
7,900.0	7,000.0	7,962.8	7,000.0	27.1	32.9	-90.00	970.8	-1,296.7	659.2	606.9	52.25	12.617	
8,000.0	7,000.0	8,062.8	7,000.0	28.6	34.1	-90.00	1,070.6	-1,303.2	659.2	603.8	55.36	11.908	
8,100.0	7,000.0	8,162.8	7,000.0	30.2	35.3	-90.00	1,170.4	-1,309.8	659.2	600.7	58.56	11.257	
8,200.0	7,000.0	8,262.8	7,000.0	31.8	36.6	-90.00	1,270.1	-1,316.3	659.2	597.4	61.85	10.659	
8,300.0	7,000.0	8,362.8	7,000.0	33.4	38.0	-90.00	1,369.9	-1,322.9	659.2	594.0	65.20	10.111	
8,400.0	7,000.0	8,462.8	7,000.0	35.1	39.4	-90.00	1,469.7	-1,329.5	659.3	590.6	68.61	9.609	
8,500.0	7,000.0	8,562.8	7,000.0	36.8	40.9	-90.00	1,569.5	-1,336.0	659.3	587.2	72.07	9.148	
8,600.0	7,000.0	8,662.8	7,000.0	38.5	42.5	-90.00	1,669.3	-1,342.6	659.3	583.7	75.57	8.724	
8,700.0	7,000.0	8,762.8	7,000.0	40.3	44.0	-90.00	1,769.1	-1,349.1	659.3	580.2	79.11	8.334	
8,800.0	7,000.0	8,862.8	7,000.0	42.0	45.6	-90.00	1,868.9	-1,355.7	659.3	576.6	82.68	7.975	
8,900.0	7,000.0	8,962.8	7,000.0	43.8	47.2	-90.00	1,968.6	-1,362.3	659.3	573.1	86.27	7.642	
9,000.0	7,000.0	9,062.8	7,000.0	45.6	48.9	-90.00	2,068.4	-1,368.8	659.3	569.4	89.90	7.334	
9,100.0	7,000.0	9,162.8	7,000.0	47.4	50.5	-90.00	2,168.2	-1,375.4	659.4	565.8	93.54	7.049	
9,200.0	7,000.0	9,262.8	7,000.0	49.2	52.2	-90.00	2,268.0	-1,381.9	659.4	562.2	97.21	6.783	
9,300.0	7,000.0	9,362.8	7,000.0	51.0	53.9	-90.00	2,367.8	-1,388.5	659.4	558.5	100.89	6.536	
9,400.0	7,000.0	9,462.8	7,000.0	52.9	55.7	-90.00	2,467.6	-1,395.0	659.4	554.8	104.59	6.305	
9,500.0	7,000.0	9,562.8	7,000.0	54.7	57.4	-90.00	2,567.4	-1,401.6	659.4	551.1	108.30	6.089	
9,600.0	7,000.0	9,662.8	7,000.0	56.6	59.2	-90.00	2,667.1	-1,408.2	659.4	547.4	112.02	5.887	
9,700.0	7,000.0	9,762.8	7,000.0	58.4	60.9	-90.00	2,766.9	-1,414.7	659.4	543.7	115.76	5.697	
9,800.0	7,000.0	9,862.8	7,000.0	60.3	62.7	-90.00	2,866.7	-1,421.3	659.5	540.0	119.50	5.518	
9,900.0	7,000.0	9,962.8	7,000.0	62.2	64.5	-90.00	2,966.5	-1,427.8	659.5	536.2	123.26	5.350	
10,000.0	7,000.0	10,062.8	7,000.0	64.0	66.3	-90.00	3,066.3	-1,434.4	659.5	532.5	127.02	5.192	
10,100.0	7,000.0	10,162.8	7,000.0	65.9	68.1	-90.00	3,166.1	-1,441.0	659.5	528.7	130.79	5.042	

CC - Min centre to center distance or convergent point, SF - min separation factor, ES - min ellipse separation

<b>Company:</b>	Synergy Resources	<b>Local Co-ordinate Reference:</b>	Well SRC Kiehn 31-4CHZ
<b>Project:</b>	SEC.4-T4N-R68W	<b>TVD Reference:</b>	WELL @ 5077.0ft (RKB - 13')
<b>Reference Site:</b>	SRC Kiehn Pad Sec.4-T4N-R68W	<b>MD Reference:</b>	WELL @ 5077.0ft (RKB - 13')
<b>Site Error:</b>	0.0ft	<b>North Reference:</b>	True
<b>Reference Well:</b>	SRC Kiehn 31-4CHZ	<b>Survey Calculation Method:</b>	Minimum Curvature
<b>Well Error:</b>	0.0ft	<b>Output errors are at</b>	2.00 sigma
<b>Reference Wellbore</b>	Wellbore #1	<b>Database:</b>	Landmark
<b>Reference Design:</b>	Plan #2 (4-25-14)	<b>Offset TVD Reference:</b>	Offset Datum

Offset Design		SRC Kiehn Pad Sec.4-T4N-R68W - SRC Kiehn 22-4NHZ - Wellbore #1 - Plan #2 (4-25-14)											Offset Site Error:	0.0 ft
Survey Program: 0-MWD													Offset Well Error:	0.0 ft
Reference		Offset		Semi Major Axis			Distance							Warning
Measured Depth	Vertical Depth	Measured Depth	Vertical Depth	Reference	Offset	Highside Toolface	Offset Wellbore Centre +N/-S	Offset Wellbore Centre +E/-W	Between Centres	Between Ellipses	Minimum Separation	Separation Factor		
(ft)	(ft)	(ft)	(ft)	(ft)	(ft)	(°)	(ft)	(ft)	(ft)	(ft)	(ft)			
10,200.0	7,000.0	10,262.8	7,000.0	67.8	69.9	-90.00	3,265.8	-1,447.5	659.5	524.9	134.57	4.901		
10,300.0	7,000.0	10,362.8	7,000.0	69.7	71.7	-90.00	3,365.6	-1,454.1	659.5	521.2	138.36	4.767		
10,400.0	7,000.0	10,462.8	7,000.0	71.6	73.5	-90.00	3,465.4	-1,460.6	659.5	517.4	142.15	4.640		
10,500.0	7,000.0	10,562.8	7,000.0	73.4	75.4	-90.00	3,565.2	-1,467.2	659.6	513.6	145.95	4.519		
10,600.0	7,000.0	10,662.8	7,000.0	75.3	77.2	-90.00	3,665.0	-1,473.7	659.6	509.8	149.75	4.405		
10,700.0	7,000.0	10,762.8	7,000.0	77.2	79.1	-90.00	3,764.8	-1,480.3	659.6	506.0	153.55	4.295		
10,800.0	7,000.0	10,862.8	7,000.0	79.1	80.9	-90.00	3,864.6	-1,486.9	659.6	502.2	157.36	4.192		
10,900.0	7,000.0	10,962.8	7,000.0	81.0	82.8	-90.00	3,964.3	-1,493.4	659.6	498.4	161.18	4.092		
11,000.0	7,000.0	11,062.8	7,000.0	82.9	84.6	-90.00	4,064.1	-1,500.0	659.6	494.6	165.00	3.998		
11,100.0	7,000.0	11,162.8	7,000.0	84.8	86.5	-90.00	4,163.9	-1,506.5	659.6	490.8	168.82	3.907		
11,200.0	7,000.0	11,262.8	7,000.0	86.7	88.3	-90.00	4,263.7	-1,513.1	659.7	487.0	172.65	3.821		
11,300.0	7,000.0	11,362.8	7,000.0	88.7	90.2	-90.00	4,363.5	-1,519.7	659.7	483.2	176.47	3.738		
11,319.7	7,000.0	11,382.5	7,000.0	89.0	90.6	-90.00	4,383.1	-1,520.9	659.7	482.5	177.15	3.724 SF		



Offset Design      SRC Kiehn Pad Sec.4-T4N-R68W - SRC Kiehn 31-4NHZ - Wellbore #1 - Plan #2 (4-25-14)													Offset Site Error:      0.0 ft	
Survey Program:    0-MWD													Offset Well Error:      0.0 ft	
Reference				Offset			Semi Major Axis			Distance			Warning	
Measured Depth	Vertical	Measured	Vertical	Reference	Offset	Highside	Offset Wellbore Centre		Between	Between	Minimum	Separation		
Depth (ft)	Depth (ft)	Depth (ft)	Depth (ft)	(ft)	(ft)	Tooface (")	+N/-S (ft)	+E/-W (ft)	Centres (ft)	Ellipses (ft)	Separation (ft)	Factor		
0.0	0.0	0.0	0.0	0.0	0.0	89.05	0.4	22.3	22.3					
100.0	100.0	100.0	100.0	0.1	0.1	89.05	0.4	22.3	22.3	22.1	0.22	99.241		
200.0	200.0	200.0	200.0	0.3	0.3	89.05	0.4	22.3	22.3	21.6	0.67	33.080		
300.0	300.0	300.0	300.0	0.6	0.6	89.05	0.4	22.3	22.3	21.2	1.12	19.848		
400.0	400.0	400.0	400.0	0.8	0.8	89.05	0.4	22.3	22.3	20.7	1.57	14.177		
500.0	500.0	500.0	500.0	1.0	1.0	89.05	0.4	22.3	22.3	20.3	2.02	11.027		
600.0	600.0	600.0	600.0	1.2	1.2	89.05	0.4	22.3	22.3	19.8	2.47	9.022		
700.0	700.0	700.0	700.0	1.5	1.5	89.05	0.4	22.3	22.3	19.4	2.92	7.634		
800.0	800.0	800.0	800.0	1.7	1.7	89.05	0.4	22.3	22.3	18.9	3.37	6.616		
900.0	900.0	900.0	900.0	1.9	1.9	89.05	0.4	22.3	22.3	18.5	3.82	5.838		
1,000.0	1,000.0	1,000.0	1,000.0	2.1	2.1	89.05	0.4	22.3	22.3	18.0	4.27	5.223		
1,100.0	1,100.0	1,100.0	1,100.0	2.4	2.4	89.05	0.4	22.3	22.3	17.6	4.72	4.726		
1,200.0	1,200.0	1,200.0	1,200.0	2.6	2.6	89.05	0.4	22.3	22.3	17.1	5.17	4.315		
1,300.0	1,300.0	1,300.0	1,300.0	2.8	2.8	89.05	0.4	22.3	22.3	16.7	5.62	3.970		
1,400.0	1,400.0	1,400.0	1,400.0	3.0	3.0	89.05	0.4	22.3	22.3	16.2	6.07	3.676		
1,500.0	1,500.0	1,500.0	1,500.0	3.3	3.3	89.05	0.4	22.3	22.3	15.8	6.52	3.422		
1,600.0	1,600.0	1,600.0	1,600.0	3.5	3.5	89.05	0.4	22.3	22.3	15.3	6.97	3.201 CC, ES		
1,700.0	1,700.0	1,700.0	1,700.0	3.7	3.7	-166.93	0.4	22.3	24.0	16.6	7.40	3.245		
1,800.0	1,799.8	1,799.8	1,799.8	3.9	3.9	-169.24	0.4	22.3	29.1	21.3	7.80	3.733		
1,900.0	1,899.5	1,900.7	1,900.7	4.1	4.1	-170.95	-0.3	20.7	36.0	27.9	8.18	4.404		
2,000.0	1,998.7	2,001.8	2,001.6	4.3	4.3	-171.50	-2.3	15.7	43.0	34.5	8.54	5.038		
2,100.0	2,097.7	2,102.8	2,102.3	4.6	4.5	-171.13	-5.7	7.6	48.6	39.7	8.94	5.441		
2,200.0	2,196.7	2,202.7	2,201.7	4.8	4.8	-170.51	-9.5	-1.4	53.2	43.8	9.34	5.693		
2,300.0	2,295.7	2,302.6	2,301.1	5.1	5.0	-169.99	-13.2	-10.4	57.8	48.0	9.76	5.920		
2,400.0	2,394.7	2,402.5	2,400.5	5.4	5.2	-169.55	-16.9	-19.5	62.3	52.2	10.18	6.124		
2,500.0	2,493.7	2,502.4	2,499.9	5.7	5.4	-169.16	-20.7	-28.5	66.9	56.3	10.61	6.309		
2,600.0	2,592.7	2,602.3	2,599.3	5.9	5.7	-168.83	-24.4	-37.5	71.5	60.5	11.04	6.475		
2,700.0	2,691.7	2,702.2	2,698.8	6.2	5.9	-168.54	-28.1	-46.5	76.1	64.6	11.48	6.626		

COMPASS 2003.21 Build 46



<b>Company:</b>	Synergy Resources	<b>Local Co-ordinate Reference:</b>	Well SRC Kiehn 31-4CHZ
<b>Project:</b>	SEC.4-T4N-R68W	<b>TVD Reference:</b>	WELL @ 5077.0ft (RKB - 13')
<b>Reference Site:</b>	SRC Kiehn Pad Sec.4-T4N-R68W	<b>MD Reference:</b>	WELL @ 5077.0ft (RKB - 13')
<b>Site Error:</b>	0.0ft	<b>North Reference:</b>	True
<b>Reference Well:</b>	SRC Kiehn 31-4CHZ	<b>Survey Calculation Method:</b>	Minimum Curvature
<b>Well Error:</b>	0.0ft	<b>Output errors are at</b>	2.00 sigma
<b>Reference Wellbore</b>	Wellbore #1	<b>Database:</b>	Landmark
<b>Reference Design:</b>	Plan #2 (4-25-14)	<b>Offset TVD Reference:</b>	Offset Datum

Offset Design SRC Kiehn Pad Sec.4-T4N-R68W - SRC Kiehn 31-4NHZ - Wellbore #1 - Plan #2 (4-25-14)												Offset Site Error:	0.0 ft
Survey Program: 0-MWD												Offset Well Error:	0.0 ft
Reference		Offset		Semi Major Axis			Distance						
Measured Depth (ft)	Vertical Depth (ft)	Measured Depth (ft)	Vertical Depth (ft)	Reference (ft)	Offset (ft)	Highside Toolface (°)	Offset Wellbore Centre +N/-S (ft)	+E/-W (ft)	Between Centres (ft)	Between Ellipses (ft)	Minimum Separation (ft)	Separation Factor	Warning
5,200.0	5,166.8	5,199.5	5,184.2	14.6	12.7	-165.79	-121.5	-272.0	190.9	167.6	23.34	8.179	
5,300.0	5,265.8	5,299.4	5,283.6	14.9	13.0	-165.75	-125.2	-281.1	195.5	171.7	23.83	8.204	
5,400.0	5,364.8	5,399.3	5,383.0	15.3	13.3	-165.71	-129.0	-290.1	200.1	175.8	24.33	8.227	
5,500.0	5,463.8	5,499.2	5,482.4	15.6	13.6	-165.67	-132.7	-299.1	204.7	179.9	24.82	8.249	
5,600.0	5,562.8	5,599.1	5,581.8	15.9	13.9	-165.63	-136.4	-308.1	209.3	184.0	25.31	8.270	
5,700.0	5,661.8	5,699.0	5,681.2	16.3	14.2	-165.60	-140.2	-317.1	213.9	188.1	25.80	8.291	
5,800.0	5,760.9	5,798.9	5,780.7	16.6	14.5	-165.52	-143.9	-326.2	217.8	191.5	26.30	8.281	
5,900.0	5,860.4	5,894.9	5,876.3	16.8	14.7	-165.30	-147.3	-334.3	219.1	192.3	26.74	8.192	
6,000.0	5,960.2	5,988.3	5,969.5	17.0	14.9	-165.15	-149.5	-339.6	219.8	192.6	27.11	8.107	
6,100.0	6,060.1	6,081.7	6,062.8	17.2	15.1	-165.08	-150.5	-342.2	220.1	192.6	27.43	8.024	
6,200.0	6,160.1	6,179.0	6,160.1	17.3	15.2	89.90	-150.6	-342.4	220.1	192.1	28.03	7.854	
6,300.0	6,260.1	6,279.0	6,260.1	17.5	15.4	89.90	-150.6	-342.4	220.1	191.7	28.41	7.747	
6,400.0	6,360.0	6,380.5	6,361.5	17.7	15.6	93.64	-146.4	-342.7	220.1	191.6	28.54	7.712	
6,500.0	6,458.4	6,482.5	6,461.7	17.8	15.7	93.54	-128.2	-343.9	220.1	191.2	28.84	7.632	
6,600.0	6,553.3	6,584.4	6,558.3	17.9	15.9	93.38	-96.1	-346.0	220.0	191.0	29.07	7.568	
6,700.0	6,643.1	6,686.2	6,649.2	18.0	16.0	93.15	-50.6	-348.9	220.0	190.7	29.32	7.502	
6,800.0	6,725.8	6,787.8	6,732.7	18.1	16.1	92.86	7.1	-352.7	219.9	190.3	29.67	7.413	
6,900.0	6,799.9	6,889.3	6,807.0	18.3	16.2	92.52	76.0	-357.2	219.9	189.7	30.20	7.281	
7,000.0	6,864.0	6,990.5	6,870.7	18.5	16.4	92.12	154.4	-362.4	219.8	188.8	31.01	7.089	
7,100.0	6,916.8	7,091.5	6,922.5	18.8	16.8	91.68	240.8	-368.0	219.8	187.6	32.16	6.834	
7,200.0	6,957.3	7,192.3	6,961.7	19.2	17.4	91.21	333.3	-374.1	219.7	186.1	33.67	6.526	
7,300.0	6,984.6	7,292.8	6,987.3	19.9	18.3	90.72	430.2	-380.4	219.7	184.2	35.53	6.185	
7,400.0	6,998.3	7,393.0	6,999.2	20.8	19.4	90.21	529.5	-386.9	219.7	182.0	37.68	5.832	
7,405.1	6,998.7	7,398.1	6,999.4	20.8	19.4	90.18	534.6	-387.3	219.7	181.9	37.79	5.813	
7,500.0	7,000.0	7,493.0	7,000.0	21.8	20.5	90.00	629.2	-393.5	219.7	179.6	40.07	5.483	
7,600.0	7,000.0	7,593.0	7,000.0	23.0	21.8	90.00	729.0	-400.0	219.7	177.0	42.69	5.147	
7,700.0	7,000.0	7,693.0	7,000.0	24.3	23.2	90.00	828.8	-406.6	219.7	174.2	45.49	4.830	
7,800.0	7,000.0	7,793.0	7,000.0	25.6	24.7	90.00	928.6	-413.1	219.7	171.3	48.45	4.535	
7,900.0	7,000.0	7,893.0	7,000.0	27.1	26.2	90.00	1,028.4	-419.6	219.7	168.2	51.53	4.265	
8,000.0	7,000.0	7,993.0	7,000.0	28.6	27.8	90.00	1,128.2	-426.2	219.7	165.0	54.71	4.016	
8,100.0	7,000.0	8,093.0	7,000.0	30.2	29.4	90.00	1,228.0	-432.7	219.8	161.8	57.98	3.790	
8,200.0	7,000.0	8,193.0	7,000.0	31.8	31.1	90.00	1,327.8	-439.2	219.8	158.4	61.33	3.583	
8,300.0	7,000.0	8,293.0	7,000.0	33.4	32.8	90.00	1,427.5	-445.8	219.8	155.0	64.73	3.395	
8,400.0	7,000.0	8,393.0	7,000.0	35.1	34.5	90.00	1,527.3	-452.3	219.8	151.6	68.19	3.223	
8,500.0	7,000.0	8,493.0	7,000.0	36.8	36.2	90.00	1,627.1	-458.9	219.8	148.1	71.69	3.066	
8,600.0	7,000.0	8,593.0	7,000.0	38.5	38.0	90.00	1,726.9	-465.4	219.8	144.6	75.24	2.921	
8,700.0	7,000.0	8,693.0	7,000.0	40.3	39.7	90.00	1,826.7	-471.9	219.8	141.0	78.81	2.789	
8,800.0	7,000.0	8,793.0	7,000.0	42.0	41.5	90.00	1,926.5	-478.5	219.8	137.4	82.42	2.667	
8,900.0	7,000.0	8,893.0	7,000.0	43.8	43.3	90.00	2,026.3	-485.0	219.8	133.8	86.05	2.555	
9,000.0	7,000.0	8,993.0	7,000.0	45.6	45.2	90.00	2,126.0	-491.5	219.8	130.1	89.70	2.451	
9,100.0	7,000.0	9,093.0	7,000.0	47.4	47.0	90.00	2,225.8	-498.1	219.8	126.5	93.37	2.354	
9,200.0	7,000.0	9,193.0	7,000.0	49.2	48.8	90.00	2,325.6	-504.6	219.8	122.8	97.06	2.265	
9,300.0	7,000.0	9,293.0	7,000.0	51.0	50.7	90.00	2,425.4	-511.1	219.8	119.1	100.77	2.182	
9,400.0	7,000.0	9,393.0	7,000.0	52.9	52.5	90.00	2,525.2	-517.7	219.8	115.4	104.48	2.104	
9,500.0	7,000.0	9,493.0	7,000.0	54.7	54.4	90.00	2,625.0	-524.2	219.9	111.6	108.22	2.032	
9,600.0	7,000.0	9,593.0	7,000.0	56.6	56.3	90.00	2,724.8	-530.8	219.9	107.9	111.96	1.964	
9,700.0	7,000.0	9,693.0	7,000.0	58.4	58.1	90.00	2,824.5	-537.3	219.9	104.2	115.71	1.900	
9,800.0	7,000.0	9,793.0	7,000.0	60.3	60.0	90.00	2,924.3	-543.8	219.9	100.4	119.47	1.840	
9,900.0	7,000.0	9,893.0	7,000.0	62.2	61.9	90.00	3,024.1	-550.4	219.9	96.6	123.24	1.784	
10,000.0	7,000.0	9,993.0	7,000.0	64.0	63.8	90.00	3,123.9	-556.9	219.9	92.9	127.02	1.731	
10,100.0	7,000.0	10,093.0	7,000.0	65.9	65.7	90.00	3,223.7	-563.4	219.9	89.1	130.81	1.681	
10,200.0	7,000.0	10,193.0	7,000.0	67.8	67.5	90.00	3,323.5	-570.0	219.9	85.3	134.60	1.634	

CC - Min centre to center distance or convergent point, SF - min separation factor, ES - min ellipse separation

<b>Company:</b>	Synergy Resources	<b>Local Co-ordinate Reference:</b>	Well SRC Kiehn 31-4CHZ
<b>Project:</b>	SEC.4-T4N-R68W	<b>TVD Reference:</b>	WELL @ 5077.0ft (RKB - 13')
<b>Reference Site:</b>	SRC Kiehn Pad Sec.4-T4N-R68W	<b>MD Reference:</b>	WELL @ 5077.0ft (RKB - 13')
<b>Site Error:</b>	0.0ft	<b>North Reference:</b>	True
<b>Reference Well:</b>	SRC Kiehn 31-4CHZ	<b>Survey Calculation Method:</b>	Minimum Curvature
<b>Well Error:</b>	0.0ft	<b>Output errors are at</b>	2.00 sigma
<b>Reference Wellbore</b>	Wellbore #1	<b>Database:</b>	Landmark
<b>Reference Design:</b>	Plan #2 (4-25-14)	<b>Offset TVD Reference:</b>	Offset Datum

<b>Offset Design</b> SRC Kiehn Pad Sec.4-T4N-R68W - SRC Kiehn 31-4NHZ - Wellbore #1 - Plan #2 (4-25-14)												<b>Offset Site Error:</b>	0.0 ft
Survey Program: 0-MWD												<b>Offset Well Error:</b>	0.0 ft
Reference		Offset		Semi Major Axis			Distance						
Measured Depth (ft)	Vertical Depth (ft)	Measured Depth (ft)	Vertical Depth (ft)	Reference (ft)	Offset (ft)	Highside Toolface (°)	Offset Wellbore Centre +N/-S (ft)	+E/-W (ft)	Between Centres (ft)	Between Ellipses (ft)	Minimum Separation (ft)	Separation Factor	Warning
10,300.0	7,000.0	10,293.0	7,000.0	69.7	69.4	90.00	3,423.3	-576.5	219.9	81.5	138.39	1.589	
10,400.0	7,000.0	10,393.0	7,000.0	71.6	71.3	90.00	3,523.0	-583.1	219.9	77.7	142.20	1.547	
10,500.0	7,000.0	10,493.0	7,000.0	73.4	73.2	90.00	3,622.8	-589.6	219.9	73.9	146.00	1.506	
10,600.0	7,000.0	10,593.0	7,000.0	75.3	75.1	90.00	3,722.6	-596.1	219.9	70.1	149.82	1.468 Level 3	
10,700.0	7,000.0	10,693.0	7,000.0	77.2	77.0	90.00	3,822.4	-602.7	219.9	66.3	153.63	1.432 Level 3	
10,800.0	7,000.0	10,793.0	7,000.0	79.1	78.9	90.00	3,922.2	-609.2	220.0	62.5	157.45	1.397 Level 3	
10,900.0	7,000.0	10,893.0	7,000.0	81.0	80.9	90.00	4,022.0	-615.7	220.0	58.7	161.28	1.364 Level 3	
11,000.0	7,000.0	10,993.0	7,000.0	82.9	82.8	90.00	4,121.8	-622.3	220.0	54.9	165.10	1.332 Level 3	
11,100.0	7,000.0	11,093.0	7,000.0	84.8	84.7	90.00	4,221.5	-628.8	220.0	51.0	168.93	1.302 Level 3	
11,200.0	7,000.0	11,193.0	7,000.0	86.7	86.6	90.00	4,321.3	-635.3	220.0	47.2	172.77	1.273 Level 3	
11,300.0	7,000.0	11,293.0	7,000.0	88.7	88.5	90.00	4,421.1	-641.9	220.0	43.4	176.60	1.246 Level 2, SF	
11,319.7	7,000.0	11,297.9	7,000.0	89.0	88.6	90.00	4,426.0	-642.2	220.5	43.5	177.00	1.246 Level 2	





<b>Company:</b>	Synergy Resources	<b>Local Co-ordinate Reference:</b>	Well SRC Kiehn 31-4CHZ
<b>Project:</b>	SEC.4-T4N-R68W	<b>TVD Reference:</b>	WELL @ 5077.0ft (RKB - 13')
<b>Reference Site:</b>	SRC Kiehn Pad Sec.4-T4N-R68W	<b>MD Reference:</b>	WELL @ 5077.0ft (RKB - 13')
<b>Site Error:</b>	0.0ft	<b>North Reference:</b>	True
<b>Reference Well:</b>	SRC Kiehn 31-4CHZ	<b>Survey Calculation Method:</b>	Minimum Curvature
<b>Well Error:</b>	0.0ft	<b>Output errors are at</b>	2.00 sigma
<b>Reference Wellbore</b>	Wellbore #1	<b>Database:</b>	Landmark
<b>Reference Design:</b>	Plan #2 (4-25-14)	<b>Offset TVD Reference:</b>	Offset Datum

Offset Design      SRC Kiehn Pad Sec.4-T4N-R68W - SRC Kiehn 32-4CHZ - Wellbore #1 - Plan #2 (4-25-14)												Offset Site Error:	0.0 ft
Survey Program: 0-MWD												Offset Well Error:	0.0 ft
Reference		Offset		Semi Major Axis			Distance						Warning
Measured Depth (ft)	Vertical Depth (ft)	Measured Depth (ft)	Vertical Depth (ft)	Reference (ft)	Offset (ft)	Highside Toolface (°)	Offset Wellbore Centre +N/-S (ft)	+E/-W (ft)	Between Centres (ft)	Between Ellipses (ft)	Minimum Separation (ft)	Separation Factor	
10,400.0	7,000.0	10,399.9	7,000.0	71.6	71.7	90.00	3,539.7	-397.2	406.5	263.9	142.67	2.850	
10,500.0	7,000.0	10,499.9	7,000.0	73.4	73.6	90.00	3,639.4	-404.8	405.4	259.0	146.48	2.768	
10,600.0	7,000.0	10,599.9	7,000.0	75.3	75.5	90.00	3,739.1	-412.4	404.3	254.0	150.30	2.690	
10,700.0	7,000.0	10,699.9	7,000.0	77.2	77.4	90.00	3,838.8	-420.1	403.2	249.1	154.12	2.616	
10,800.0	7,000.0	10,799.9	7,000.0	79.1	79.3	90.00	3,938.5	-427.7	402.2	244.2	157.95	2.546	
10,900.0	7,000.0	10,899.9	7,000.0	81.0	81.2	90.00	4,038.2	-435.3	401.1	239.3	161.78	2.479	
11,000.0	7,000.0	10,999.9	7,000.0	82.9	83.2	90.00	4,137.9	-443.0	400.0	234.3	165.61	2.415	
11,100.0	7,000.0	11,099.9	7,000.0	84.8	85.1	90.00	4,237.6	-450.6	398.9	229.4	169.45	2.354	
11,200.0	7,000.0	11,199.9	7,000.0	86.7	87.0	90.00	4,337.3	-458.3	397.8	224.5	173.29	2.295	
11,280.7	7,000.0	11,280.6	7,000.0	88.3	88.3	90.00	4,417.8	-464.4	396.9	220.8	176.08	2.254	
11,300.0	7,000.0	11,288.8	7,000.0	88.7	88.4	90.00	4,426.0	-465.0	396.8	220.3	176.58	2.247 SF	
11,319.7	7,000.0	11,288.8	7,000.0	89.0	88.4	90.00	4,426.0	-465.0	397.6	220.8	176.88	2.248	

<b>Company:</b>	Synergy Resources	<b>Local Co-ordinate Reference:</b>	Well SRC Kiehn 31-4CHZ
<b>Project:</b>	SEC.4-T4N-R68W	<b>TVD Reference:</b>	WELL @ 5077.0ft (RKB - 13')
<b>Reference Site:</b>	SRC Kiehn Pad Sec.4-T4N-R68W	<b>MD Reference:</b>	WELL @ 5077.0ft (RKB - 13')
<b>Site Error:</b>	0.0ft	<b>North Reference:</b>	True
<b>Reference Well:</b>	SRC Kiehn 31-4CHZ	<b>Survey Calculation Method:</b>	Minimum Curvature
<b>Well Error:</b>	0.0ft	<b>Output errors are at</b>	2.00 sigma
<b>Reference Wellbore</b>	Wellbore #1	<b>Database:</b>	Landmark
<b>Reference Design:</b>	Plan #2 (4-25-14)	<b>Offset TVD Reference:</b>	Offset Datum

Offset Design													Offset Site Error:	0.0 ft
Survey Program: 0-MWD													Offset Well Error:	0.0 ft
Reference		Offset		Semi Major Axis			Distance							Warning
Measured Depth (ft)	Vertical Depth (ft)	Measured Depth (ft)	Vertical Depth (ft)	Reference (ft)	Offset (ft)	Highside Toolface (°)	Offset Wellbore Centre +N/-S (ft)	+E/-W (ft)	Between Centres (ft)	Between Ellipses (ft)	Minimum Separation (ft)	Separation Factor		
0.0	0.0	0.0	0.0	0.0	0.0	89.07	1.1	67.5	67.5					
100.0	100.0	100.0	100.0	0.1	0.1	89.07	1.1	67.5	67.5	67.3	0.22	300.202		
200.0	200.0	200.0	200.0	0.3	0.3	89.07	1.1	67.5	67.5	66.8	0.67	100.067		
300.0	300.0	300.0	300.0	0.6	0.6	89.07	1.1	67.5	67.5	66.4	1.12	60.040		
400.0	400.0	400.0	400.0	0.8	0.8	89.07	1.1	67.5	67.5	65.9	1.57	42.886		
500.0	500.0	500.0	500.0	1.0	1.0	89.07	1.1	67.5	67.5	65.5	2.02	33.356		
600.0	600.0	600.0	600.0	1.2	1.2	89.07	1.1	67.5	67.5	65.0	2.47	27.291		
700.0	700.0	700.0	700.0	1.5	1.5	89.07	1.1	67.5	67.5	64.6	2.92	23.092		
800.0	800.0	800.0	800.0	1.7	1.7	89.07	1.1	67.5	67.5	64.1	3.37	20.013		
900.0	900.0	900.0	900.0	1.9	1.9	89.07	1.1	67.5	67.5	63.7	3.82	17.659		
1,000.0	1,000.0	1,000.0	1,000.0	2.1	2.1	89.07	1.1	67.5	67.5	63.2	4.27	15.800		
1,100.0	1,100.0	1,100.0	1,100.0	2.4	2.4	89.07	1.1	67.5	67.5	62.8	4.72	14.295		
1,200.0	1,200.0	1,200.0	1,200.0	2.6	2.6	89.07	1.1	67.5	67.5	62.3	5.17	13.052		
1,300.0	1,300.0	1,300.0	1,300.0	2.8	2.8	89.07	1.1	67.5	67.5	61.9	5.62	12.008		
1,400.0	1,400.0	1,400.0	1,400.0	3.0	3.0	89.07	1.1	67.5	67.5	61.4	6.07	11.119		
1,500.0	1,500.0	1,500.0	1,500.0	3.3	3.3	89.07	1.1	67.5	67.5	61.0	6.52	10.352		
1,600.0	1,600.0	1,600.0	1,600.0	3.5	3.5	89.07	1.1	67.5	67.5	60.5	6.97	9.684 CC, ES		
1,700.0	1,700.0	1,700.0	1,700.0	3.7	3.7	-166.25	1.1	67.5	69.2	61.8	7.40	9.352		
1,800.0	1,799.8	1,799.8	1,799.8	3.9	3.9	-167.18	1.1	67.5	74.3	66.5	7.80	9.518		
1,900.0	1,899.5	1,899.5	1,899.5	4.1	4.2	-168.49	1.1	67.5	82.8	74.6	8.20	10.091		
2,000.0	1,998.7	1,998.7	1,998.7	4.3	4.4	-169.92	1.1	67.5	94.8	86.2	8.60	11.019		
2,100.0	2,097.7	2,097.7	2,097.7	4.6	4.6	-171.21	1.1	67.5	108.7	99.6	9.02	12.043		
2,200.0	2,196.7	2,196.7	2,196.7	4.8	4.8	-172.22	1.1	67.5	122.6	113.1	9.45	12.972		
2,300.0	2,295.7	2,295.4	2,295.4	5.1	5.0	-172.34	-0.5	67.8	136.7	126.8	9.85	13.868		
2,400.0	2,394.7	2,394.2	2,394.1	5.4	5.2	-171.38	-4.8	68.6	150.9	140.7	10.24	14.742		
2,500.0	2,493.7	2,493.2	2,492.9	5.7	5.4	-170.48	-9.3	69.6	165.3	154.7	10.63	15.547		
2,600.0	2,592.7	2,592.1	2,591.8	5.9	5.5	-169.73	-13.9	70.5	179.7	168.6	11.03	16.286		
2,700.0	2,691.7	2,691.0	2,690.6	6.2	5.7	-169.09	-18.5	71.4	194.1	182.6	11.44	16.964		
2,800.0	2,790.7	2,790.0	2,789.4	6.6	5.9	-168.54	-23.0	72.3	208.5	196.6	11.86	17.586		
2,900.0	2,889.7	2,888.9	2,888.2	6.9	6.1	-168.05	-27.6	73.2	222.9	210.7	12.28	18.159		
3,000.0	2,988.7	2,987.8	2,987.1	7.2	6.3	-167.63	-32.2	74.2	237.4	224.7	12.70	18.687		
3,100.0	3,087.7	3,086.8	3,085.9	7.5	6.5	-167.26	-36.8	75.1	251.8	238.7	13.14	19.174		
3,200.0	3,186.7	3,185.7	3,184.7	7.8	6.7	-166.92	-41.3	76.0	266.3	252.8	13.57	19.624		
3,300.0	3,285.7	3,284.6	3,283.5	8.1	6.9	-166.63	-45.9	76.9	280.8	266.8	14.01	20.040		
3,400.0	3,384.8	3,383.6	3,382.4	8.5	7.1	-166.36	-50.5	77.8	295.3	280.8	14.46	20.426		
3,500.0	3,483.8	3,482.5	3,481.2	8.8	7.3	-166.11	-55.0	78.8	309.8	294.9	14.90	20.784		
3,600.0	3,582.8	3,581.5	3,580.0	9.1	7.5	-165.89	-59.6	79.7	324.3	308.9	15.36	21.118		
3,700.0	3,681.8	3,680.4	3,678.8	9.5	7.7	-165.68	-64.2	80.6	338.8	323.0	15.81	21.428		
3,800.0	3,780.8	3,779.3	3,777.7	9.8	7.9	-165.50	-68.7	81.5	353.3	337.0	16.27	21.718		
3,900.0	3,879.8	3,878.3	3,876.5	10.1	8.2	-165.33	-73.3	82.4	367.8	351.1	16.73	21.989		
4,000.0	3,978.8	3,977.2	3,975.3	10.5	8.4	-165.17	-77.9	83.4	382.3	365.1	17.19	22.243		
4,100.0	4,077.8	4,076.1	4,074.1	10.8	8.6	-165.02	-82.5	84.3	396.8	379.2	17.65	22.481		
4,200.0	4,176.8	4,175.1	4,173.0	11.1	8.8	-164.88	-87.0	85.2	411.4	393.2	18.12	22.704		
4,300.0	4,275.8	4,274.0	4,271.8	11.5	9.0	-164.75	-91.6	86.1	425.9	407.3	18.59	22.914		
4,400.0	4,374.8	4,372.9	4,370.6	11.8	9.3	-164.64	-96.2	87.0	440.4	421.4	19.06	23.112		
4,500.0	4,473.8	4,471.9	4,469.4	12.2	9.5	-164.52	-100.7	88.0	454.9	435.4	19.53	23.298		
4,600.0	4,572.8	4,570.8	4,568.3	12.5	9.7	-164.42	-105.3	88.9	469.5	449.5	20.00	23.474		
4,700.0	4,671.8	4,669.7	4,667.1	12.8	9.9	-164.32	-109.9	89.8	484.0	463.5	20.47	23.641		
4,800.0	4,770.8	4,768.7	4,765.9	13.2	10.1	-164.23	-114.5	90.7	498.5	477.6	20.95	23.798		
4,900.0	4,869.8	4,867.6	4,864.8	13.5	10.4	-164.14	-119.0	91.6	513.1	491.6	21.42	23.947		
5,000.0	4,968.8	4,966.6	4,963.6	13.9	10.6	-164.06	-123.6	92.6	527.6	505.7	21.90	24.089		
5,100.0	5,067.8	5,065.5	5,062.4	14.2	10.8	-163.98	-128.2	93.5	542.1	519.7	22.38	24.223		

CC - Min centre to center distance or convergent point, SF - min separation factor, ES - min ellipse separation

<b>Company:</b>	Synergy Resources	<b>Local Co-ordinate Reference:</b>	Well SRC Kiehn 31-4CHZ
<b>Project:</b>	SEC.4-T4N-R68W	<b>TVD Reference:</b>	WELL @ 5077.0ft (RKB - 13')
<b>Reference Site:</b>	SRC Kiehn Pad Sec.4-T4N-R68W	<b>MD Reference:</b>	WELL @ 5077.0ft (RKB - 13')
<b>Site Error:</b>	0.0ft	<b>North Reference:</b>	True
<b>Reference Well:</b>	SRC Kiehn 31-4CHZ	<b>Survey Calculation Method:</b>	Minimum Curvature
<b>Well Error:</b>	0.0ft	<b>Output errors are at</b>	2.00 sigma
<b>Reference Wellbore</b>	Wellbore #1	<b>Database:</b>	Landmark
<b>Reference Design:</b>	Plan #2 (4-25-14)	<b>Offset TVD Reference:</b>	Offset Datum

Offset Design												Offset Site Error:	0.0 ft
Survey Program: 0-MWD												Offset Well Error:	0.0 ft
Reference		Offset		Semi Major Axis			Distance						
Measured Depth (ft)	Vertical Depth (ft)	Measured Depth (ft)	Vertical Depth (ft)	Reference (ft)	Offset (ft)	Highside Toolface (°)	Offset Wellbore Centre +N/-S (ft)	+E/-W (ft)	Between Centres (ft)	Between Ellipses (ft)	Minimum Separation (ft)	Separation Factor	Warning
5,200.0	5,166.8	5,164.4	5,161.2	14.6	11.1	-163.91	-132.7	94.4	556.7	533.8	22.86	24.351	
5,300.0	5,265.8	5,263.4	5,260.1	14.9	11.3	-163.84	-137.3	95.3	571.2	547.9	23.34	24.472	
5,400.0	5,364.8	5,362.3	5,358.9	15.3	11.5	-163.77	-141.9	96.3	585.7	561.9	23.82	24.588	
5,500.0	5,463.8	5,461.2	5,457.7	15.6	11.7	-163.70	-146.4	97.2	600.3	576.0	24.30	24.699	
5,600.0	5,562.8	5,564.6	5,561.0	15.9	12.0	-163.79	-149.6	97.8	614.5	589.7	24.77	24.805	
5,700.0	5,661.8	5,665.4	5,661.8	16.3	12.2	-164.13	-149.9	97.9	628.1	602.9	25.22	24.906	
5,800.0	5,760.9	5,764.5	5,760.9	16.6	12.4	-164.50	-149.9	97.9	640.9	615.3	25.67	24.969	
5,900.0	5,860.4	5,864.0	5,860.4	16.8	12.6	-164.79	-149.9	97.9	650.7	624.6	26.08	24.946	
6,000.0	5,960.2	5,963.8	5,960.2	17.0	12.8	-164.97	-149.9	97.9	657.1	630.6	26.47	24.821	
6,100.0	6,060.1	6,063.7	6,060.1	17.2	13.0	-165.06	-149.9	97.9	660.1	633.3	26.84	24.598	
6,200.0	6,160.1	6,163.7	6,160.1	17.3	13.2	89.91	-149.9	97.9	660.4	633.0	27.35	24.144	
6,300.0	6,260.1	6,263.7	6,260.1	17.5	13.4	89.91	-149.9	97.9	660.4	632.6	27.74	23.805	
6,400.0	6,360.0	6,368.5	6,364.7	17.7	13.5	93.64	-145.3	97.6	660.4	632.4	27.98	23.599	
6,500.0	6,458.4	6,474.6	6,468.9	17.8	13.7	93.54	-125.6	96.3	660.3	632.0	28.29	23.342	
6,600.0	6,553.3	6,580.4	6,568.7	17.9	13.9	93.37	-90.9	94.0	660.2	631.6	28.55	23.127	
6,700.0	6,643.1	6,685.9	6,662.1	18.0	14.0	93.14	-42.1	90.8	660.0	631.2	28.82	22.899	
6,800.0	6,725.8	6,790.9	6,746.9	18.1	14.2	92.83	19.6	86.8	659.9	630.6	29.21	22.590	
6,900.0	6,799.9	6,895.3	6,821.3	18.3	14.6	92.48	92.4	82.0	659.7	629.9	29.80	22.137	
7,000.0	6,864.0	6,998.9	6,883.9	18.5	15.0	92.07	174.7	76.6	659.5	628.8	30.68	21.498	
7,100.0	6,916.8	7,101.9	6,933.7	18.8	15.7	91.62	264.5	70.7	659.3	627.4	31.90	20.667	
7,200.0	6,957.3	7,204.0	6,969.9	19.2	16.6	91.15	359.7	64.5	659.2	625.7	33.49	19.683	
7,300.0	6,984.6	7,305.3	6,992.0	19.9	17.6	90.65	458.3	58.1	659.2	623.7	35.42	18.609	
7,400.0	6,998.3	7,405.8	7,000.0	20.8	18.7	90.14	558.2	51.5	659.1	621.5	37.63	17.516	
7,400.1	6,998.4	7,405.8	7,000.0	20.8	18.7	90.14	558.2	51.5	659.1	621.5	37.63	17.515	
7,500.0	7,000.0	7,505.7	7,000.0	21.8	20.0	90.00	657.9	45.0	659.1	619.1	40.08	16.446	
7,600.0	7,000.0	7,605.7	7,000.0	23.0	21.3	90.00	757.7	38.5	659.2	616.4	42.74	15.422	
7,700.0	7,000.0	7,705.7	7,000.0	24.3	22.8	90.00	857.5	31.9	659.2	613.6	45.58	14.461	
7,800.0	7,000.0	7,805.7	7,000.0	25.6	24.3	90.00	957.3	25.4	659.2	610.6	48.57	13.572	
7,900.0	7,000.0	7,905.7	7,000.0	27.1	25.9	90.00	1,057.1	18.9	659.2	607.5	51.68	12.756	
8,000.0	7,000.0	8,005.7	7,000.0	28.6	27.5	90.00	1,156.9	12.4	659.2	604.3	54.89	12.010	
8,100.0	7,000.0	8,105.7	7,000.0	30.2	29.2	90.00	1,256.6	5.8	659.2	601.0	58.18	11.331	
8,200.0	7,000.0	8,205.7	7,000.0	31.8	30.9	90.00	1,356.4	-0.7	659.2	597.7	61.54	10.712	
8,300.0	7,000.0	8,305.7	7,000.0	33.4	32.6	90.00	1,456.2	-7.2	659.3	594.3	64.97	10.148	
8,400.0	7,000.0	8,405.7	7,000.0	35.1	34.3	90.00	1,556.0	-13.8	659.3	590.8	68.44	9.633	
8,500.0	7,000.0	8,505.7	7,000.0	36.8	36.1	90.00	1,655.8	-20.3	659.3	587.3	71.96	9.162	
8,600.0	7,000.0	8,605.7	7,000.0	38.5	37.9	90.00	1,755.6	-26.8	659.3	583.8	75.51	8.731	
8,700.0	7,000.0	8,705.7	7,000.0	40.3	39.7	90.00	1,855.4	-33.4	659.3	580.2	79.10	8.335	
8,800.0	7,000.0	8,805.7	7,000.0	42.0	41.5	90.00	1,955.2	-39.9	659.3	576.6	82.71	7.971	
8,900.0	7,000.0	8,905.7	7,000.0	43.8	43.4	90.00	2,054.9	-46.4	659.3	573.0	86.35	7.636	
9,000.0	7,000.0	9,005.7	7,000.0	45.6	45.2	90.00	2,154.7	-52.9	659.4	569.3	90.01	7.325	
9,100.0	7,000.0	9,105.7	7,000.0	47.4	47.0	90.00	2,254.5	-59.5	659.4	565.7	93.69	7.038	
9,200.0	7,000.0	9,205.7	7,000.0	49.2	48.9	90.00	2,354.3	-66.0	659.4	562.0	97.39	6.771	
9,300.0	7,000.0	9,305.7	7,000.0	51.0	50.7	90.00	2,454.1	-72.5	659.4	558.3	101.10	6.522	
9,400.0	7,000.0	9,405.7	7,000.0	52.9	52.6	90.00	2,553.9	-79.1	659.4	554.6	104.82	6.291	
9,500.0	7,000.0	9,505.7	7,000.0	54.7	54.5	90.00	2,653.7	-85.6	659.4	550.9	108.56	6.074	
9,600.0	7,000.0	9,605.7	7,000.0	56.6	56.4	90.00	2,753.4	-92.1	659.4	547.1	112.31	5.872	
9,700.0	7,000.0	9,705.7	7,000.0	58.4	58.2	90.00	2,853.2	-98.6	659.5	543.4	116.07	5.682	
9,800.0	7,000.0	9,805.7	7,000.0	60.3	60.1	90.00	2,953.0	-105.2	659.5	539.6	119.83	5.503	
9,900.0	7,000.0	9,905.7	7,000.0	62.2	62.0	90.00	3,052.8	-111.7	659.5	535.9	123.61	5.335	
10,000.0	7,000.0	10,005.7	7,000.0	64.0	63.9	90.00	3,152.6	-118.2	659.5	532.1	127.39	5.177	
10,100.0	7,000.0	10,105.7	7,000.0	65.9	65.8	90.00	3,252.4	-124.8	659.5	528.3	131.18	5.028	
10,200.0	7,000.0	10,205.7	7,000.0	67.8	67.7	90.00	3,352.2	-131.3	659.5	524.6	134.97	4.886	

CC - Min centre to center distance or convergent point, SF - min separation factor, ES - min ellipse separation



<b>Company:</b>	Synergy Resources	<b>Local Co-ordinate Reference:</b>	Well SRC Kiehn 31-4CHZ
<b>Project:</b>	SEC.4-T4N-R68W	<b>TVD Reference:</b>	WELL @ 5077.0ft (RKB - 13')
<b>Reference Site:</b>	SRC Kiehn Pad Sec.4-T4N-R68W	<b>MD Reference:</b>	WELL @ 5077.0ft (RKB - 13')
<b>Site Error:</b>	0.0ft	<b>North Reference:</b>	True
<b>Reference Well:</b>	SRC Kiehn 31-4CHZ	<b>Survey Calculation Method:</b>	Minimum Curvature
<b>Well Error:</b>	0.0ft	<b>Output errors are at</b>	2.00 sigma
<b>Reference Wellbore</b>	Wellbore #1	<b>Database:</b>	Landmark
<b>Reference Design:</b>	Plan #2 (4-25-14)	<b>Offset TVD Reference:</b>	Offset Datum

<b>Offset Design</b> SRC Kiehn Pad Sec.4-T4N-R68W - SRC Kiehn 32-4NHZ - Wellbore #1 - Plan #2 (4-25-14)												<b>Offset Site Error:</b>	0.0 ft
Survey Program: 0-MWD												<b>Offset Well Error:</b>	0.0 ft
Reference		Offset		Semi Major Axis			Distance						
Measured Depth (ft)	Vertical Depth (ft)	Measured Depth (ft)	Vertical Depth (ft)	Reference (ft)	Offset (ft)	Highside Toolface (°)	Offset Wellbore Centre +N/-S (ft)	+E/-W (ft)	Between Centres (ft)	Between Ellipses (ft)	Minimum Separation (ft)	Separation Factor	Warning
10,300.0	7,000.0	10,305.7	7,000.0	69.7	69.6	90.00	3,451.9	-137.8	659.5	520.8	138.77	4.753	
10,400.0	7,000.0	10,405.7	7,000.0	71.6	71.5	90.00	3,551.7	-144.4	659.6	517.0	142.58	4.626	
10,500.0	7,000.0	10,505.7	7,000.0	73.4	73.4	90.00	3,651.5	-150.9	659.6	513.2	146.39	4.506	
10,600.0	7,000.0	10,605.7	7,000.0	75.3	75.3	90.00	3,751.3	-157.4	659.6	509.4	150.20	4.391	
10,700.0	7,000.0	10,705.7	7,000.0	77.2	77.3	90.00	3,851.1	-163.9	659.6	505.6	154.02	4.283	
10,800.0	7,000.0	10,805.7	7,000.0	79.1	79.2	90.00	3,950.9	-170.5	659.6	501.8	157.84	4.179	
10,900.0	7,000.0	10,905.7	7,000.0	81.0	81.1	90.00	4,050.7	-177.0	659.6	498.0	161.67	4.080	
11,000.0	7,000.0	11,005.7	7,000.0	82.9	83.0	90.00	4,150.5	-183.5	659.6	494.1	165.50	3.986	
11,100.0	7,000.0	11,105.7	7,000.0	84.8	84.9	90.00	4,250.2	-190.1	659.7	490.3	169.33	3.896	
11,200.0	7,000.0	11,205.7	7,000.0	86.7	86.8	90.00	4,350.0	-196.6	659.7	486.5	173.16	3.810	
11,250.2	7,000.0	11,255.9	7,000.0	87.7	87.8	90.00	4,400.1	-199.9	659.7	484.6	175.09	3.768	
11,300.0	7,000.0	11,281.5	7,000.0	88.7	88.3	90.00	4,425.7	-201.5	660.1	483.6	176.53	3.739	
11,319.7	7,000.0	11,281.5	7,000.0	89.0	88.3	90.00	4,425.7	-201.5	661.2	484.3	176.84	3.739 SF	



<b>Company:</b>	Synergy Resources	<b>Local Co-ordinate Reference:</b>	Well SRC Kiehn 31-4CHZ
<b>Project:</b>	SEC.4-T4N-R68W	<b>TVD Reference:</b>	WELL @ 5077.0ft (RKB - 13')
<b>Reference Site:</b>	SRC Kiehn Pad Sec.4-T4N-R68W	<b>MD Reference:</b>	WELL @ 5077.0ft (RKB - 13')
<b>Site Error:</b>	0.0ft	<b>North Reference:</b>	True
<b>Reference Well:</b>	SRC Kiehn 31-4CHZ	<b>Survey Calculation Method:</b>	Minimum Curvature
<b>Well Error:</b>	0.0ft	<b>Output errors are at</b>	2.00 sigma
<b>Reference Wellbore</b>	Wellbore #1	<b>Database:</b>	Landmark
<b>Reference Design:</b>	Plan #2 (4-25-14)	<b>Offset TVD Reference:</b>	Offset Datum

Offset Design SRC Kiehn Pad Sec.4-T4N-R68W - SRC Kiehn N-4NHZ - Wellbore #1 - Plan #2 (4-25-14)													Offset Site Error:	0.0 ft
Survey Program: 0-MWD													Offset Well Error:	0.0 ft
Reference		Offset		Semi Major Axis			Distance							Warning
Measured Depth (ft)	Vertical Depth (ft)	Measured Depth (ft)	Vertical Depth (ft)	Reference (ft)	Offset (ft)	Highside Toolface (°)	Offset Wellbore Centre +N/-S (ft)	+E/-W (ft)	Between Centres (ft)	Between Ellipses (ft)	Minimum Separation (ft)	Separation Factor		
0.0	0.0	0.0	0.0	0.0	0.0	-90.92	-0.4	-22.6	22.6					
100.0	100.0	100.0	100.0	0.1	0.1	-90.92	-0.4	-22.6	22.6	22.4	0.22	100.481		
200.0	200.0	200.0	200.0	0.3	0.3	-90.92	-0.4	-22.6	22.6	21.9	0.67	33.494		
300.0	300.0	300.0	300.0	0.6	0.6	-90.92	-0.4	-22.6	22.6	21.5	1.12	20.096		
400.0	400.0	400.0	400.0	0.8	0.8	-90.92	-0.4	-22.6	22.6	21.0	1.57	14.354		
500.0	500.0	500.0	500.0	1.0	1.0	-90.92	-0.4	-22.6	22.6	20.6	2.02	11.165		
600.0	600.0	600.0	600.0	1.2	1.2	-90.92	-0.4	-22.6	22.6	20.1	2.47	9.135		
700.0	700.0	700.0	700.0	1.5	1.5	-90.92	-0.4	-22.6	22.6	19.7	2.92	7.729		
800.0	800.0	800.0	800.0	1.7	1.7	-90.92	-0.4	-22.6	22.6	19.2	3.37	6.699		
900.0	900.0	900.0	900.0	1.9	1.9	-90.92	-0.4	-22.6	22.6	18.8	3.82	5.911		
1,000.0	1,000.0	1,000.0	1,000.0	2.1	2.1	-90.92	-0.4	-22.6	22.6	18.3	4.27	5.288		
1,100.0	1,100.0	1,100.0	1,100.0	2.4	2.4	-90.92	-0.4	-22.6	22.6	17.9	4.72	4.785		
1,200.0	1,200.0	1,200.0	1,200.0	2.6	2.6	-90.92	-0.4	-22.6	22.6	17.4	5.17	4.369		
1,300.0	1,300.0	1,300.0	1,300.0	2.8	2.8	-90.92	-0.4	-22.6	22.6	17.0	5.62	4.019		
1,400.0	1,400.0	1,400.0	1,400.0	3.0	3.0	-90.92	-0.4	-22.6	22.6	16.5	6.07	3.722 CC, ES		
1,500.0	1,500.0	1,499.2	1,499.2	3.3	3.2	-91.65	-0.7	-24.3	24.3	17.8	6.50	3.737		
1,600.0	1,600.0	1,598.1	1,598.0	3.5	3.4	-93.32	-1.7	-29.3	29.4	22.5	6.92	4.250		
1,700.0	1,700.0	1,696.8	1,696.3	3.7	3.6	10.38	-3.4	-37.6	36.3	29.0	7.32	4.957		
1,800.0	1,799.8	1,795.2	1,793.9	3.9	3.9	9.78	-5.7	-49.3	43.1	35.4	7.70	5.601		
1,900.0	1,899.5	1,893.4	1,890.9	4.1	4.1	9.60	-8.6	-64.1	49.9	41.9	8.08	6.181		
2,000.0	1,998.7	1,992.6	1,988.5	4.3	4.4	9.78	-12.1	-81.7	56.0	47.5	8.46	6.612		
2,100.0	2,097.7	2,092.5	2,086.8	4.6	4.7	10.23	-15.7	-99.6	60.3	51.4	8.89	6.787		
2,200.0	2,196.7	2,192.4	2,185.0	4.8	5.0	10.62	-19.2	-117.5	64.7	55.3	9.32	6.937		
2,300.0	2,295.7	2,292.3	2,283.2	5.1	5.4	10.97	-22.8	-135.4	69.0	59.3	9.76	7.069		
2,400.0	2,394.7	2,392.2	2,381.4	5.4	5.7	11.27	-26.3	-153.3	73.4	63.2	10.21	7.183		
2,500.0	2,493.7	2,492.1	2,479.7	5.7	6.1	11.54	-29.9	-171.2	77.7	67.1	10.67	7.284		
2,600.0	2,592.7	2,592.0	2,577.9	5.9	6.4	11.78	-33.4	-189.1	82.1	70.9	11.13	7.372		
2,700.0	2,691.7	2,691.9	2,676.1	6.2	6.8	11.99	-37.0	-207.0	86.4	74.8	11.60	7.450		
2,800.0	2,790.7	2,791.8	2,774.3	6.6	7.2	12.19	-40.6	-224.9	90.8	78.7	12.07	7.520		
2,900.0	2,889.7	2,891.7	2,872.5	6.9	7.6	12.37	-44.1	-242.8	95.2	82.6	12.55	7.581		
3,000.0	2,988.7	2,991.7	2,970.8	7.2	8.0	12.53	-47.7	-260.7	99.5	86.5	13.03	7.636		
3,100.0	3,087.7	3,091.6	3,069.0	7.5	8.3	12.68	-51.2	-278.6	103.9	90.4	13.52	7.685		
3,200.0	3,186.7	3,191.5	3,167.2	7.8	8.7	12.81	-54.8	-296.5	108.2	94.2	14.00	7.729		
3,300.0	3,285.7	3,291.4	3,265.4	8.1	9.1	12.94	-58.3	-314.4	112.6	98.1	14.49	7.769		
3,400.0	3,384.8	3,391.3	3,363.7	8.5	9.5	13.05	-61.9	-332.3	117.0	102.0	14.99	7.805		
3,500.0	3,483.8	3,491.2	3,461.9	8.8	9.9	13.16	-65.4	-350.2	121.3	105.8	15.48	7.837		
3,600.0	3,582.8	3,591.1	3,560.1	9.1	10.3	13.26	-69.0	-368.1	125.7	109.7	15.98	7.866		
3,700.0	3,681.8	3,691.0	3,658.3	9.5	10.7	13.36	-72.5	-386.0	130.1	113.6	16.48	7.893		
3,800.0	3,780.8	3,790.9	3,756.6	9.8	11.1	13.44	-76.1	-403.9	134.4	117.4	16.98	7.917		
3,900.0	3,879.8	3,890.8	3,854.8	10.1	11.5	13.53	-79.7	-421.8	138.8	121.3	17.48	7.939		
4,000.0	3,978.8	3,990.7	3,953.0	10.5	11.9	13.60	-83.2	-439.7	143.2	125.2	17.98	7.960		
4,100.0	4,077.8	4,090.6	4,051.2	10.8	12.3	13.68	-86.8	-457.6	147.5	129.0	18.49	7.978		
4,200.0	4,176.8	4,190.5	4,149.5	11.1	12.8	13.75	-90.3	-475.5	151.9	132.9	19.00	7.996		
4,300.0	4,275.8	4,290.4	4,247.7	11.5	13.2	13.81	-93.9	-493.4	156.3	136.7	19.50	8.011		
4,400.0	4,374.8	4,390.3	4,345.9	11.8	13.6	13.87	-97.4	-511.3	160.6	140.6	20.01	8.026		
4,500.0	4,473.8	4,490.2	4,444.1	12.2	14.0	13.93	-101.0	-529.2	165.0	144.5	20.52	8.039		
4,600.0	4,572.8	4,590.1	4,542.4	12.5	14.4	13.98	-104.5	-547.1	169.3	148.3	21.03	8.052		
4,700.0	4,671.8	4,690.0	4,640.6	12.8	14.8	14.04	-108.1	-565.0	173.7	152.2	21.54	8.063		
4,800.0	4,770.8	4,789.9	4,738.8	13.2	15.2	14.09	-111.7	-582.9	178.1	156.0	22.06	8.074		
4,900.0	4,869.8	4,889.8	4,837.0	13.5	15.6	14.13	-115.2	-600.8	182.4	159.9	22.57	8.084		
5,000.0	4,968.8	4,989.7	4,935.2	13.9	16.0	14.18	-118.8	-618.7	186.8	163.7	23.08	8.093		
5,100.0	5,067.8	5,089.6	5,033.5	14.2	16.4	14.22	-122.3	-636.6	191.2	167.6	23.60	8.102		

CC - Min centre to center distance or convergent point, SF - min separation factor, ES - min ellipse separation

Offset Design      SRC Kiehn Pad Sec.4-T4N-R68W - SRC Kiehn N-4NHZ - Wellbore #1 - Plan #2 (4-25-14)													Offset Site Error:      0.0 ft	
Survey Program:    0-MWD													Offset Well Error:      0.0 ft	
Reference		Offset		Semi Major Axis			Distance							
Measured Depth	Vertical Depth	Measured Depth	Vertical Depth	Reference	Offset	Highside Toolface	Offset Wellbore Centre		Between Centres	Between Ellipses	Minimum Separation	Separation Factor	Warning	
(ft)	(ft)	(ft)	(ft)	(ft)	(ft)	(°)	+N/-S (ft)	+E/-W (ft)	(ft)	(ft)	(ft)			
5,200.0	5,166.8	5,189.6	5,131.7	14.6	16.9	14.26	-125.9	-654.5	195.6	171.4	24.11	8.110		
5,300.0	5,265.8	5,289.5	5,229.9	14.9	17.3	14.30	-129.4	-672.4	199.9	175.3	24.63	8.117		
5,400.0	5,364.8	5,389.4	5,328.1	15.3	17.7	14.34	-133.0	-690.3	204.3	179.1	25.14	8.124		
5,500.0	5,463.8	5,489.3	5,426.4	15.6	18.1	14.37	-136.5	-708.2	208.7	183.0	25.66	8.131		
5,600.0	5,562.8	5,589.2	5,524.6	15.9	18.5	14.41	-140.1	-726.1	213.0	186.8	26.18	8.137		
5,700.0	5,661.8	5,692.8	5,626.6	16.3	18.9	14.46	-143.7	-744.3	217.0	190.3	26.69	8.128		
5,800.0	5,760.9	5,800.9	5,733.5	16.6	19.2	14.64	-146.8	-759.8	218.5	191.3	27.17	8.040		
5,900.0	5,860.4	5,909.0	5,840.9	16.8	19.5	14.79	-149.1	-771.4	219.4	191.9	27.58	7.956		
6,000.0	5,960.2	6,017.1	5,948.8	17.0	19.7	14.88	-150.6	-779.0	220.1	192.1	27.94	7.877		
6,100.0	6,060.1	6,125.3	6,056.9	17.2	19.8	14.93	-151.3	-782.6	220.4	192.1	28.25	7.801		
6,200.0	6,160.1	6,228.6	6,160.1	17.3	20.0	-90.09	-151.4	-782.9	220.4	191.4	28.94	7.614		
6,300.0	6,260.1	6,328.6	6,260.1	17.5	20.1	-90.09	-151.4	-782.9	220.4	191.1	29.32	7.517		
6,400.0	6,360.0	6,427.1	6,358.5	17.7	20.3	-86.36	-147.5	-783.1	220.4	191.0	29.33	7.514		
6,500.0	6,458.4	6,525.2	6,455.1	17.8	20.4	-86.45	-130.6	-784.2	220.4	190.7	29.62	7.441		
6,600.0	6,553.3	6,623.4	6,548.5	17.9	20.5	-86.61	-100.8	-786.2	220.3	190.5	29.85	7.382		
6,700.0	6,643.1	6,721.6	6,637.0	18.0	20.6	-86.83	-58.4	-789.0	220.3	190.2	30.08	7.322		
6,800.0	6,725.8	6,820.0	6,719.0	18.1	20.7	-87.11	-4.3	-792.5	220.2	189.8	30.41	7.242		
6,900.0	6,799.9	6,918.6	6,792.9	18.3	20.8	-87.44	60.7	-796.8	220.1	189.2	30.91	7.123		
7,000.0	6,864.0	7,017.3	6,857.3	18.5	21.0	-87.83	135.3	-801.7	220.1	188.4	31.68	6.948		
7,100.0	6,916.8	7,116.3	6,910.9	18.8	21.3	-88.26	218.2	-807.1	220.0	187.2	32.77	6.714		
7,200.0	6,957.3	7,215.4	6,952.7	19.2	21.7	-88.72	307.9	-813.0	220.0	185.7	34.22	6.428		
7,300.0	6,984.6	7,314.9	6,981.7	19.9	22.2	-89.21	402.7	-819.2	219.9	183.9	36.01	6.107		
7,400.0	6,998.3	7,414.6	6,997.3	20.8	22.9	-89.72	500.9	-825.6	219.9	181.8	38.10	5.772		
7,500.0	7,000.0	7,514.5	7,000.0	21.8	23.8	-90.00	600.5	-832.2	219.9	179.5	40.44	5.438		
7,600.0	7,000.0	7,614.5	7,000.0	23.0	24.8	-90.00	700.3	-838.7	219.9	176.9	43.01	5.113		
7,700.0	7,000.0	7,714.5	7,000.0	24.3	25.9	-90.00	800.1	-845.2	219.9	174.1	45.77	4.804		

<b>Company:</b>	Synergy Resources	<b>Local Co-ordinate Reference:</b>	Well SRC Kiehn 31-4CHZ
<b>Project:</b>	SEC.4-T4N-R68W	<b>TVD Reference:</b>	WELL @ 5077.0ft (RKB - 13')
<b>Reference Site:</b>	SRC Kiehn Pad Sec.4-T4N-R68W	<b>MD Reference:</b>	WELL @ 5077.0ft (RKB - 13')
<b>Site Error:</b>	0.0ft	<b>North Reference:</b>	True
<b>Reference Well:</b>	SRC Kiehn 31-4CHZ	<b>Survey Calculation Method:</b>	Minimum Curvature
<b>Well Error:</b>	0.0ft	<b>Output errors are at</b>	2.00 sigma
<b>Reference Wellbore</b>	Wellbore #1	<b>Database:</b>	Landmark
<b>Reference Design:</b>	Plan #2 (4-25-14)	<b>Offset TVD Reference:</b>	Offset Datum

<b>Offset Design</b> SRC Kiehn Pad Sec.4-T4N-R68W - SRC Kiehn N-4NHZ - Wellbore #1 - Plan #2 (4-25-14)												<b>Offset Site Error:</b>	0.0 ft
Survey Program: 0-MWD												<b>Offset Well Error:</b>	0.0 ft
Reference		Offset		Semi Major Axis			Distance						
Measured Depth (ft)	Vertical Depth (ft)	Measured Depth (ft)	Vertical Depth (ft)	Reference (ft)	Offset (ft)	Highside Toolface (°)	Offset Wellbore Centre +N/-S (ft)	+E/-W (ft)	Between Centres (ft)	Between Ellipses (ft)	Minimum Separation (ft)	Separation Factor	Warning
10,400.0	7,000.0	10,414.5	7,000.0	71.6	72.0	-90.00	3,494.3	-1,021.8	219.8	77.7	142.07	1.547	
10,500.0	7,000.0	10,514.5	7,000.0	73.4	73.9	-90.00	3,594.1	-1,028.3	219.8	73.9	145.88	1.506	
10,600.0	7,000.0	10,614.5	7,000.0	75.3	75.8	-90.00	3,693.9	-1,034.9	219.7	70.1	149.68	1.468	Level 3
10,700.0	7,000.0	10,714.5	7,000.0	77.2	77.6	-90.00	3,793.7	-1,041.4	219.7	66.2	153.50	1.432	Level 3
10,800.0	7,000.0	10,814.5	7,000.0	79.1	79.5	-90.00	3,893.4	-1,047.9	219.7	62.4	157.31	1.397	Level 3
10,900.0	7,000.0	10,914.5	7,000.0	81.0	81.4	-90.00	3,993.2	-1,054.5	219.7	58.6	161.13	1.364	Level 3
11,000.0	7,000.0	11,014.5	7,000.0	82.9	83.3	-90.00	4,093.0	-1,061.0	219.7	54.8	164.96	1.332	Level 3
11,100.0	7,000.0	11,114.5	7,000.0	84.8	85.2	-90.00	4,192.8	-1,067.6	219.7	50.9	168.78	1.302	Level 3
11,200.0	7,000.0	11,214.5	7,000.0	86.7	87.1	-90.00	4,292.6	-1,074.1	219.7	47.1	172.61	1.273	Level 3
11,300.0	7,000.0	11,314.5	7,000.0	88.7	89.0	-90.00	4,392.4	-1,080.6	219.7	43.3	176.45	1.245	Level 2
11,319.7	7,000.0	11,334.2	7,000.0	89.0	89.4	-90.00	4,412.0	-1,081.9	219.7	42.6	177.13	1.240	Level 2, SF

Reference Depths are relative to WELL @ 5077.0ft (RKB - 13')	Coordinates are relative to: SRC Kiehn 31-4CHZ
Offset Depths are relative to Offset Datum	Coordinate System is US State Plane 1983, Colorado Northern Zone
Central Meridian is -105.500000 °	Grid Convergence at Surface is: 0.32°



<b>Company:</b>	Synergy Resources	<b>Local Co-ordinate Reference:</b>	Well SRC Kiehn 31-4CHZ
<b>Project:</b>	SEC.4-T4N-R68W	<b>TVD Reference:</b>	WELL @ 5077.0ft (RKB - 13')
<b>Reference Site:</b>	SRC Kiehn Pad Sec.4-T4N-R68W	<b>MD Reference:</b>	WELL @ 5077.0ft (RKB - 13')
<b>Site Error:</b>	0.0ft	<b>North Reference:</b>	True
<b>Reference Well:</b>	SRC Kiehn 31-4CHZ	<b>Survey Calculation Method:</b>	Minimum Curvature
<b>Well Error:</b>	0.0ft	<b>Output errors are at</b>	2.00 sigma
<b>Reference Wellbore</b>	Wellbore #1	<b>Database:</b>	Landmark
<b>Reference Design:</b>	Plan #2 (4-25-14)	<b>Offset TVD Reference:</b>	Offset Datum

Reference Depths are relative to WELL @ 5077.0ft (RKB - 13')  
 Offset Depths are relative to Offset Datum  
 Central Meridian is -105.500000 °

Coordinates are relative to: SRC Kiehn 31-4CHZ  
 Coordinate System is US State Plane 1983, Colorado Northern Zone  
 Grid Convergence at Surface is: 0.32°

