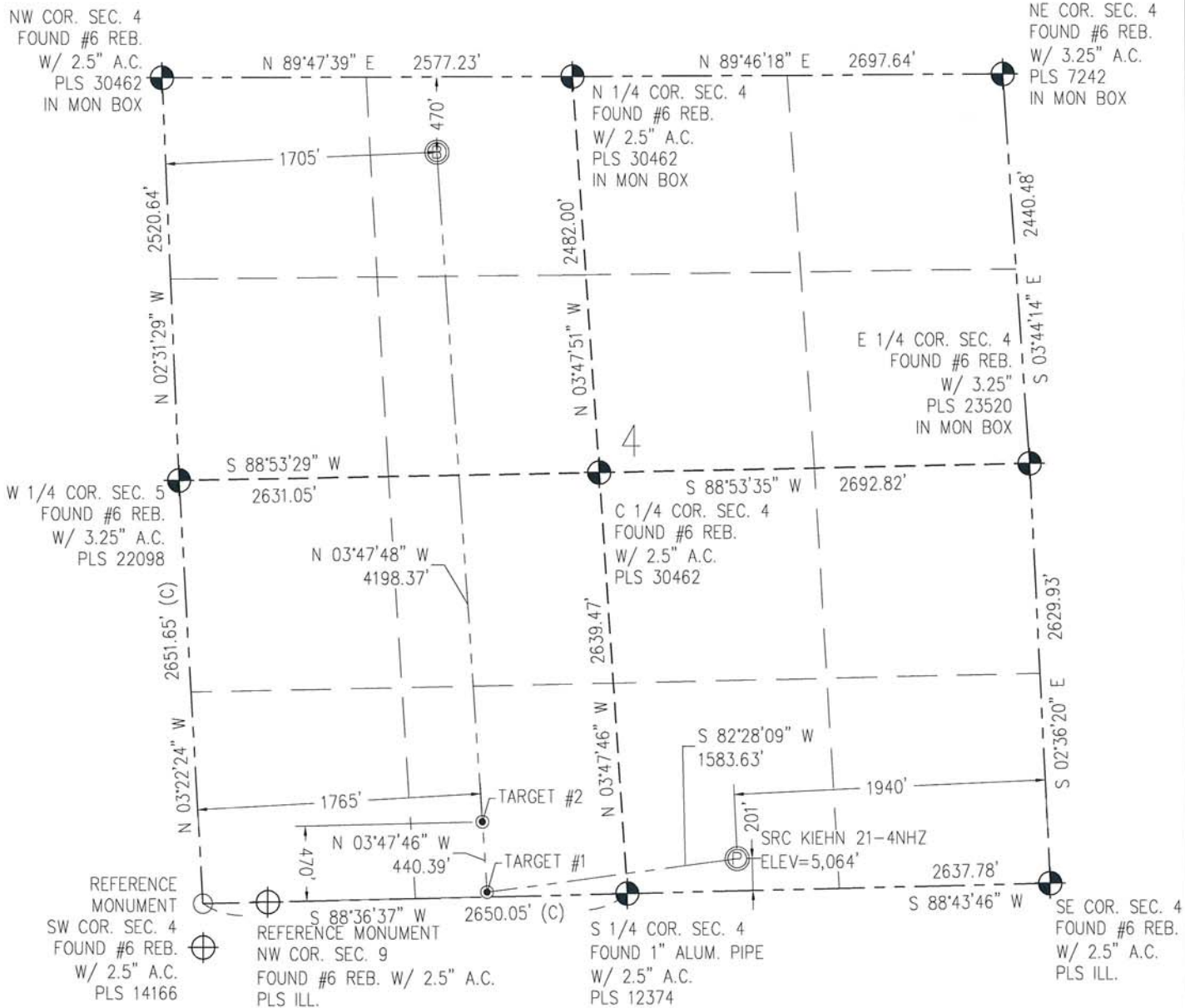


# WELL LOCATION CERTIFICATE

THIS MAP DOES NOT REPRESENT A BOUNDARY SURVEY



I HEREBY CERTIFY THAT THIS WELL LOCATION CERTIFICATE WAS PREPARED BY ME, OR UNDER MY DIRECT SUPERVISION, THAT THE FIELD WORK WAS COMPLETED ON 12/12/2013, THAT IT IS NOT A LAND SURVEY PLAT OR AN IMPROVEMENT SURVEY PLAT, AND THAT IT IS NOT TO BE RELIED UPON FOR ESTABLISHMENT OF FENCE, BUILDING, OR OTHER FUTURE IMPROVEMENT LINES.



**NOTES:**

- 1) LAT/LONG SHOWN ARE BASED ON A GPS OBSERVATION (NAD83).
- 2) BEARINGS SHOWN ARE GRID BEARINGS OF THE COLORADO STATE PLANE COORDINATE SYSTEM, NORTH ZONE, NORTH AMERICAN DATUM 1983/2007
- 3) GROUND ELEVATIONS ARE BASED ON A GPS OBSERVATION (NAVD 88 DATUM).
- 4) ALL DISTANCES SHOWN ARE FIELD MEASURED UNLESS OTHERWISE NOTED.
- 5) THE NEAREST EXISTING WELL IS: NONE IN SECTION.
- 6) IMPROVEMENTS: SEE LOCATION DRAWING EXHIBIT FOR ALL VISIBLE IMPROVEMENTS WITHIN 600' OF WELL HEAD.
- 7) SURFACE USE: PASTURE/AGRICULTURAL.
- 8) OPERATOR NAME: BRETT BIRCH.

**SURFACE HOLE:**  
 LATITUDE: 40.335800° N  
 LONGITUDE: 105.005864° W  
 PDOP: 1.2  
 1/4, 1/4: SW1/4SE1/4  
 NEAREST PROPERTY LINE: 201' S

**BOTTOM HOLE:**  
 LATITUDE: 40.347961° N  
 LONGITUDE: 105.012508° W

**TARGET #1:**  
 LATITUDE: 40.335255° N  
 LONGITUDE: 105.011498° W

**TARGET #2:**  
 LATITUDE: 40.336461° N  
 LONGITUDE: 105.011594° W

**LEGEND**

- FOUND/SET SURVEY MONUMENT PER MONUMENT RECORD EXCEPTIONS NOTED.
- CALCULATED SURVEY MONUMENT POSITION
- CALCULATED DIMENSION



AARON A DEMO  
 Professional Land Surveyor Registration No. 38285  
 State of Colorado  
 FOR AND ON BEHALF OF BASELINE ENGINEERING CORP.

Completed  
 1/8/2014

NOTICE: According to Colorado law you MUST commence any legal action based upon any defect in this W.L.C. within three years after you first discover such defect. In no event may any action based upon any defect in this W.L.C. be commenced more than ten years from this said date of the certification show hereon.