



# RADIAL CEMENT BOND LOG

Company	ENCANA OIL & GAS (USA) INC.						
Well	SELTZER #1						
Field	WATTENBURG						
County	WELD						
State	COLORADO	Country USA					
Location:	APL # : 05-123-07546						
Permanent Datum	GROUND LEVEL	Elevation 5077'					
Log Measured From	KELLY BUSHING	=10'					
Drilling Measured From	KELLY BUSHING						
Elevation	N/A						
Other Services	N/A						
SEC 34	TWP 1N	RGE 67W					
LAT: 40.003065 / LONG: -104.880579							
APRIL-3-2014							
Run Number	ONE						
Depth Driller	8400'						
Depth Logger	7518'						
Bottom Logged Interval	7518'						
Top Log Interval	150'						
Open Hole Size	UNK						
Type Fluid	WATER						
Density / Viscosity	~8.3# PER/GAL						
Max. Recorded Temp.	N/A						
Estimated Cement Top	6810'						
Time Well Ready	N/A						
Time Logger on Bottom	N/A						
Equipment Number	D6 / RBT 1						
Location	MEAD, CO.						
Recorded By	C.PACE						
Witnessed By	J.RUSSELL						
Borehole Record							
Run Number	Bit	From	To	Size	Weight	From	To
UNK							
Casing Record	Size			Wgt/Ft		Top	Bottom
Surface String	8 - 5/8"			24#		0'	428'
Prot. String							
Production String	4 - 1 1/2"			11.6#		0'	8400'
Liner							

<<< Fold Here >>>

All interpretations are opinions based on inferences from electrical or other measurements and we cannot and do not guarantee the accuracy or correctness of any interpretation, and we shall not, except in the case of gross or willful negligence on our part, be liable or responsible for any loss, costs, damages, or expenses incurred or sustained by anyone resulting from any interpretation made by any of our officers, agents or employees. These interpretations are also subject to our general terms and conditions set out in our current Price Schedule.

## Comments

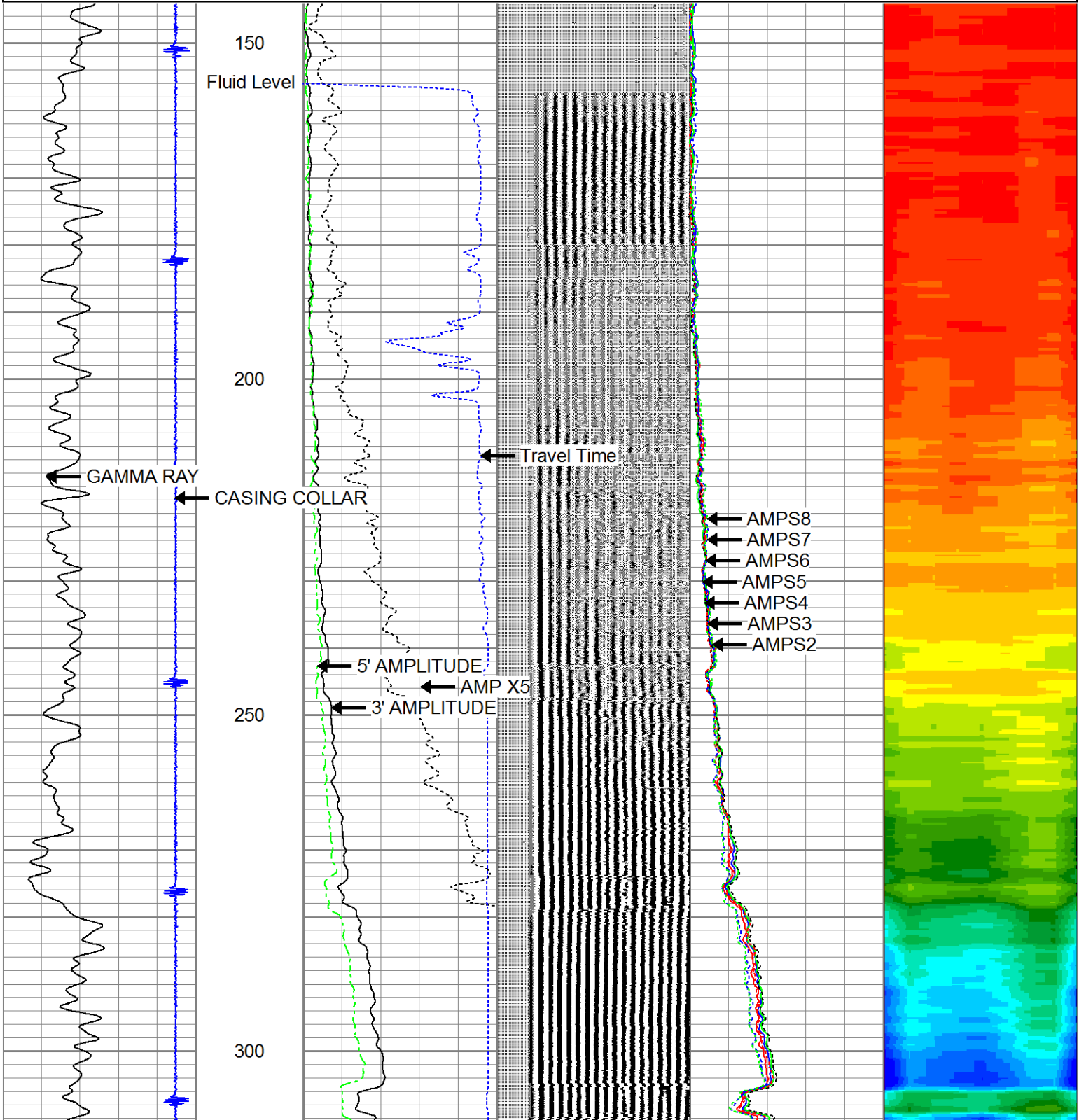
LOG NOT CORRELATED TO SCHLUMBERGER CBL LOG DATED 6/17/1992  
LOGGED UNDER 0 PSI

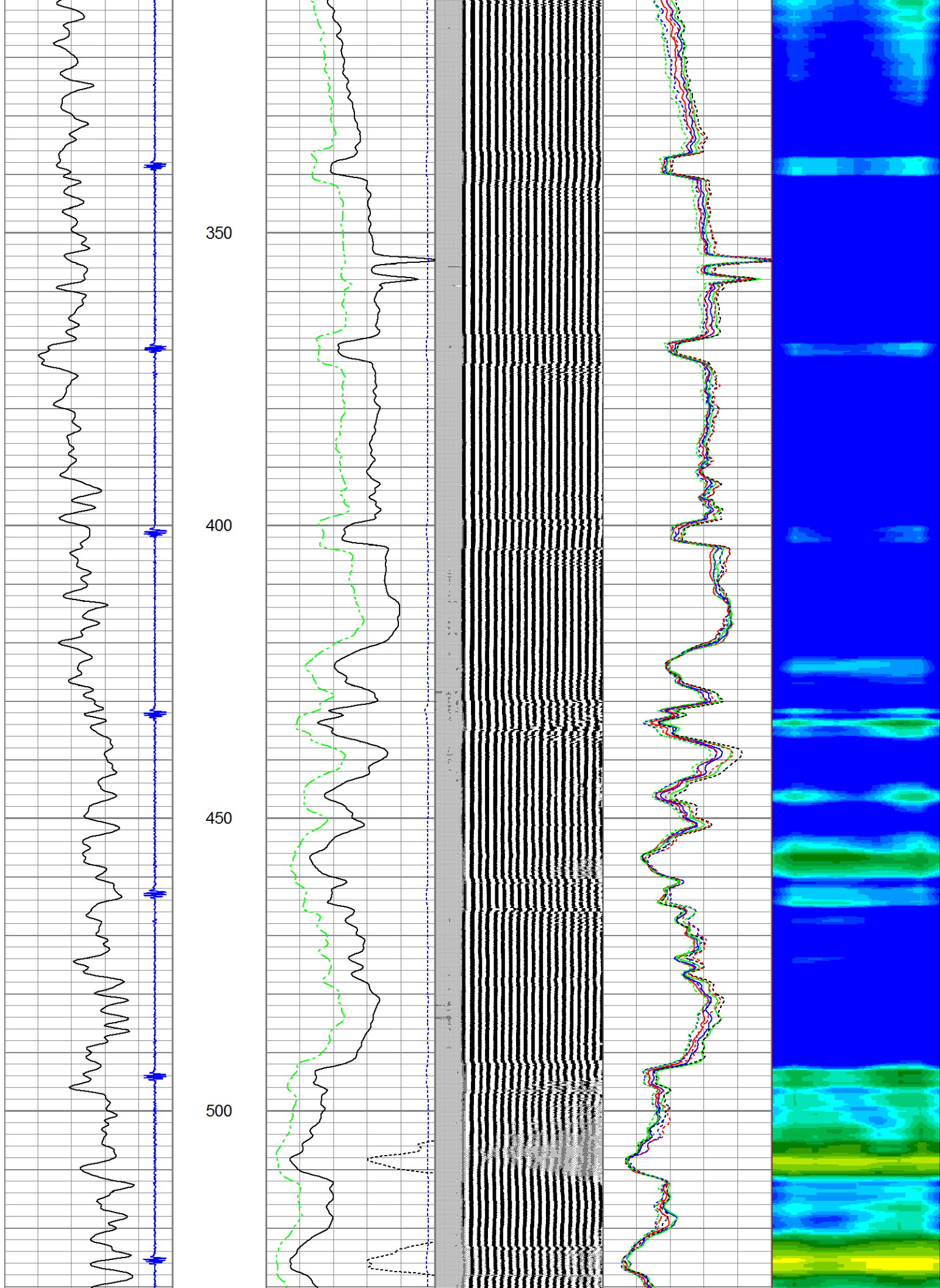


TOP PASS

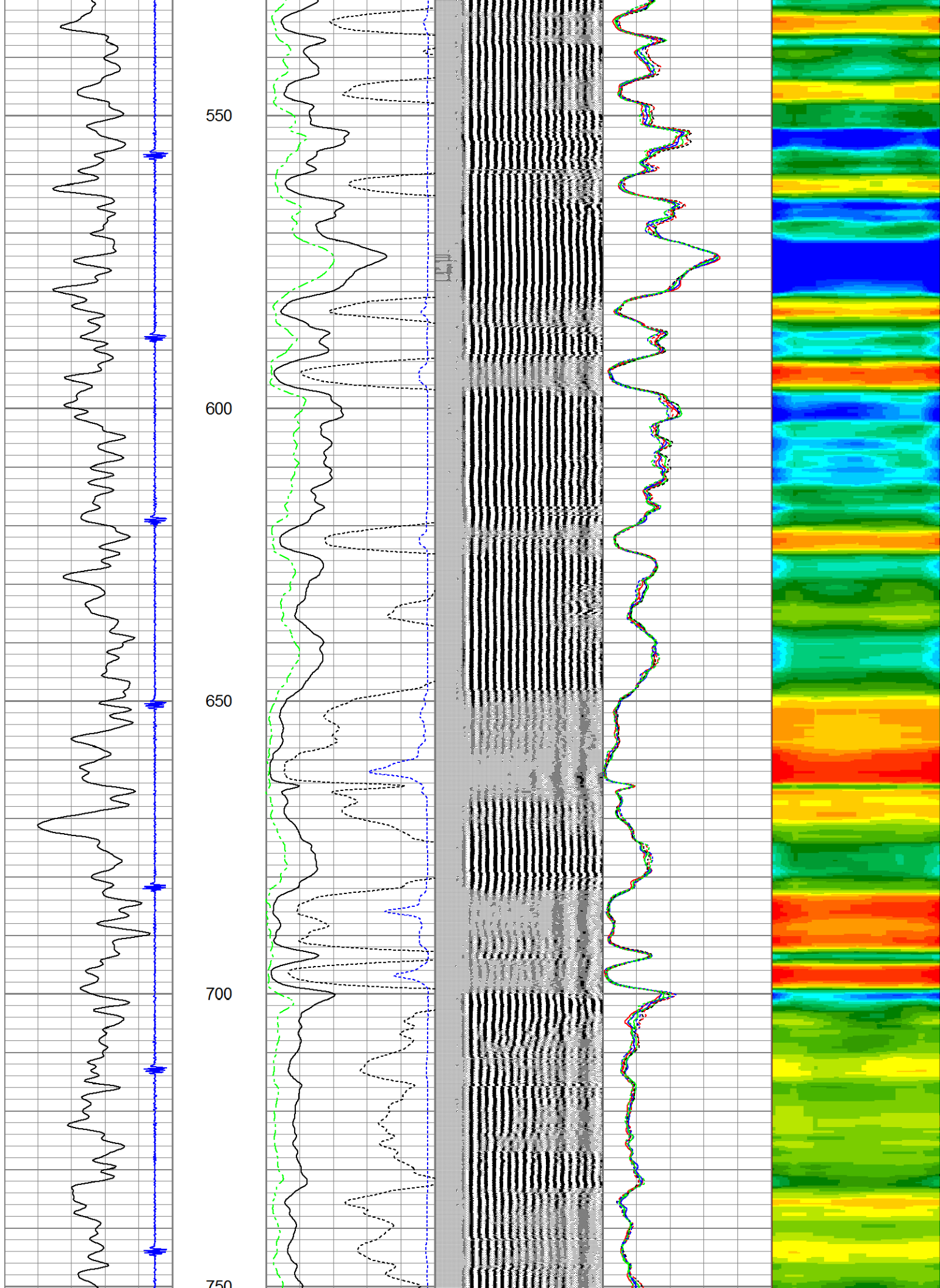
5" = 100'

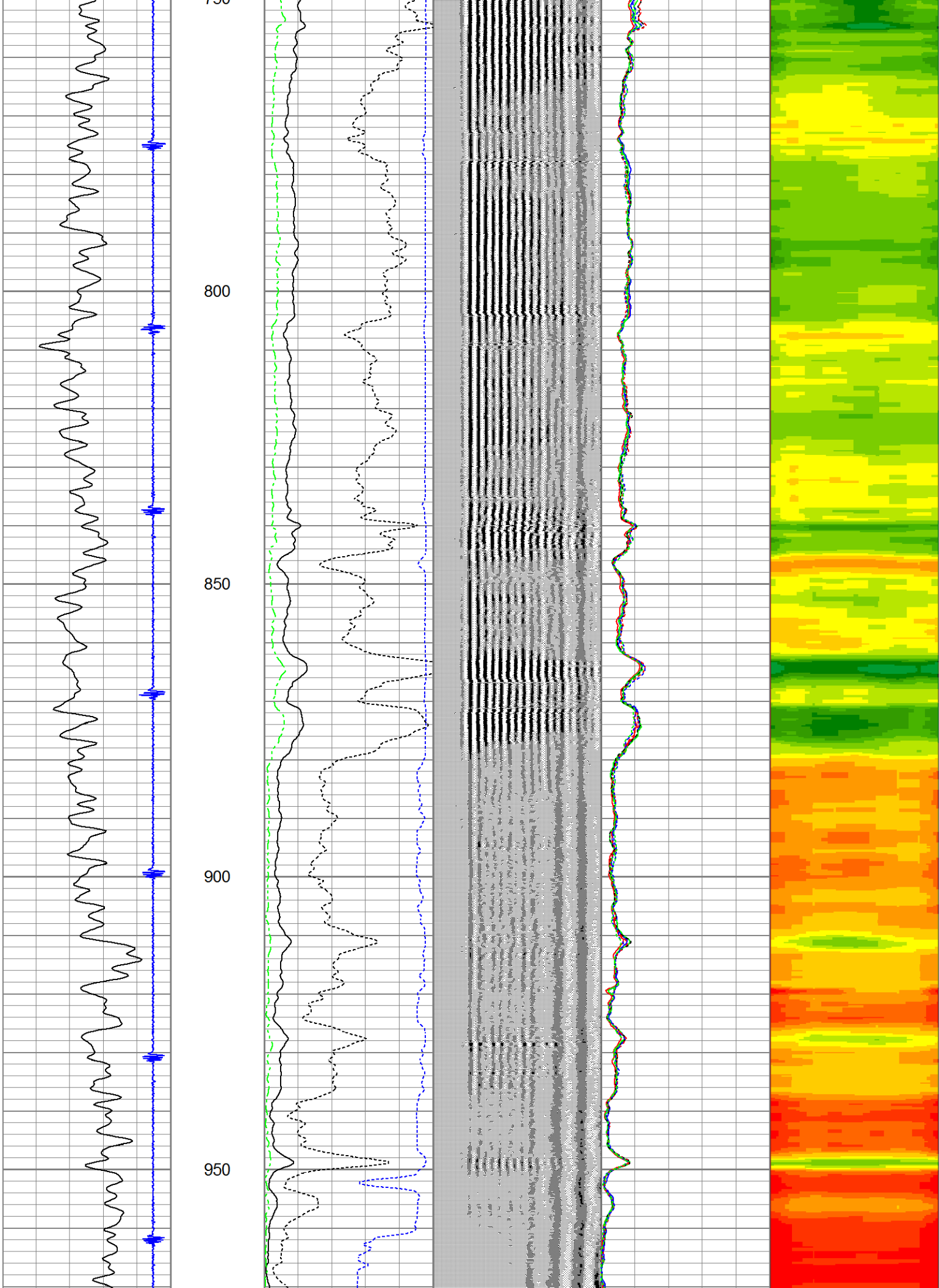
CASING COLLAR	3' AMPLITUDE	200	VDL	1200	0	AMPS2	100	1	Cement Map	8
-91	0 (mV) 100				0	AMPS3	100	1		45
GAMMA RAY	0 AMP X5 (mV) 24				0	AMPS4	100			
0 (GAPI) 200	5' AMPLITUDE				0	AMPS5	100			
	0 (mV) 100				0	AMPS6	100			
	Travel Time				0	AMPS7	100			
	1200 (usec) 200				0	AMPS8	100			

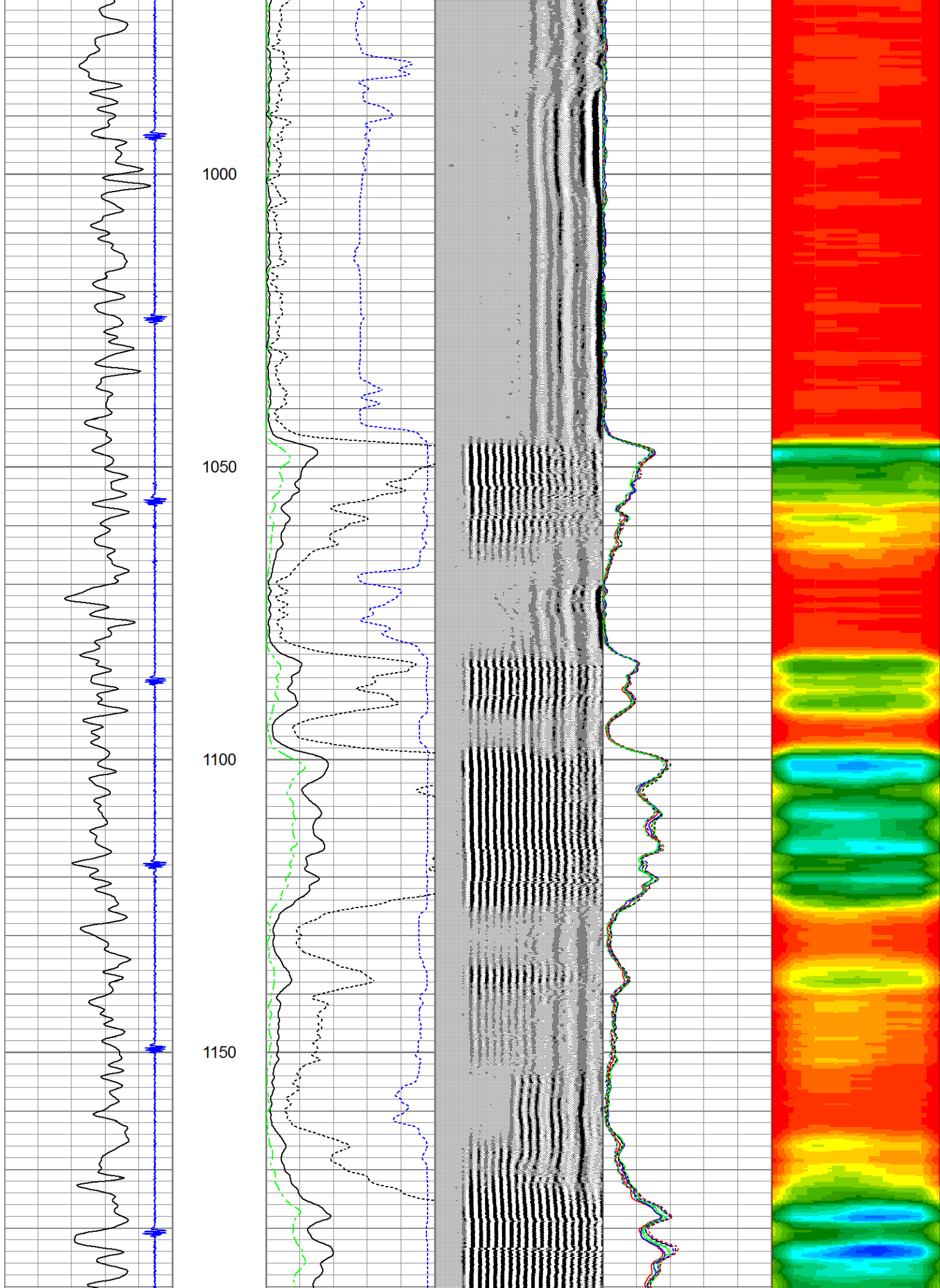




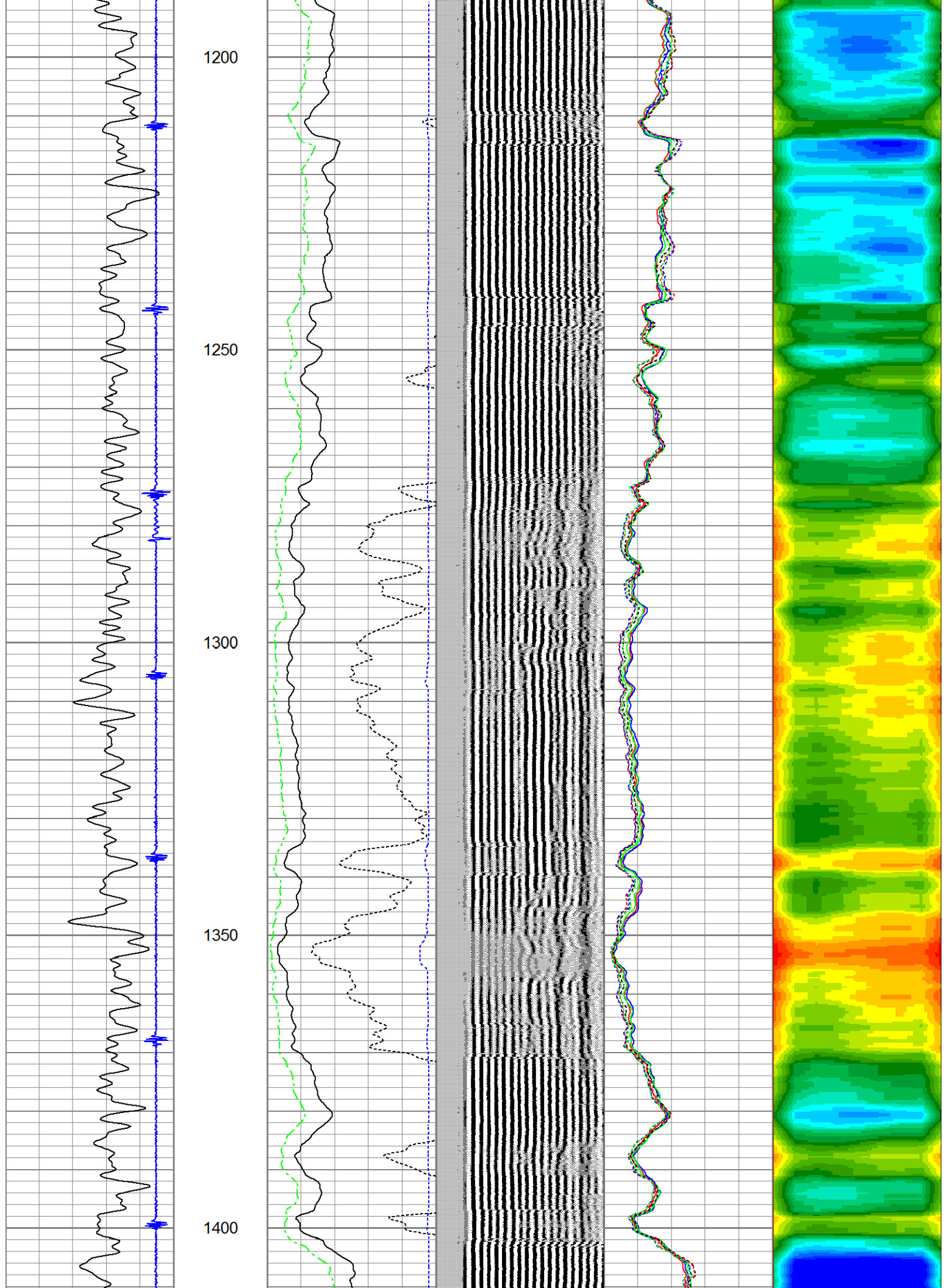


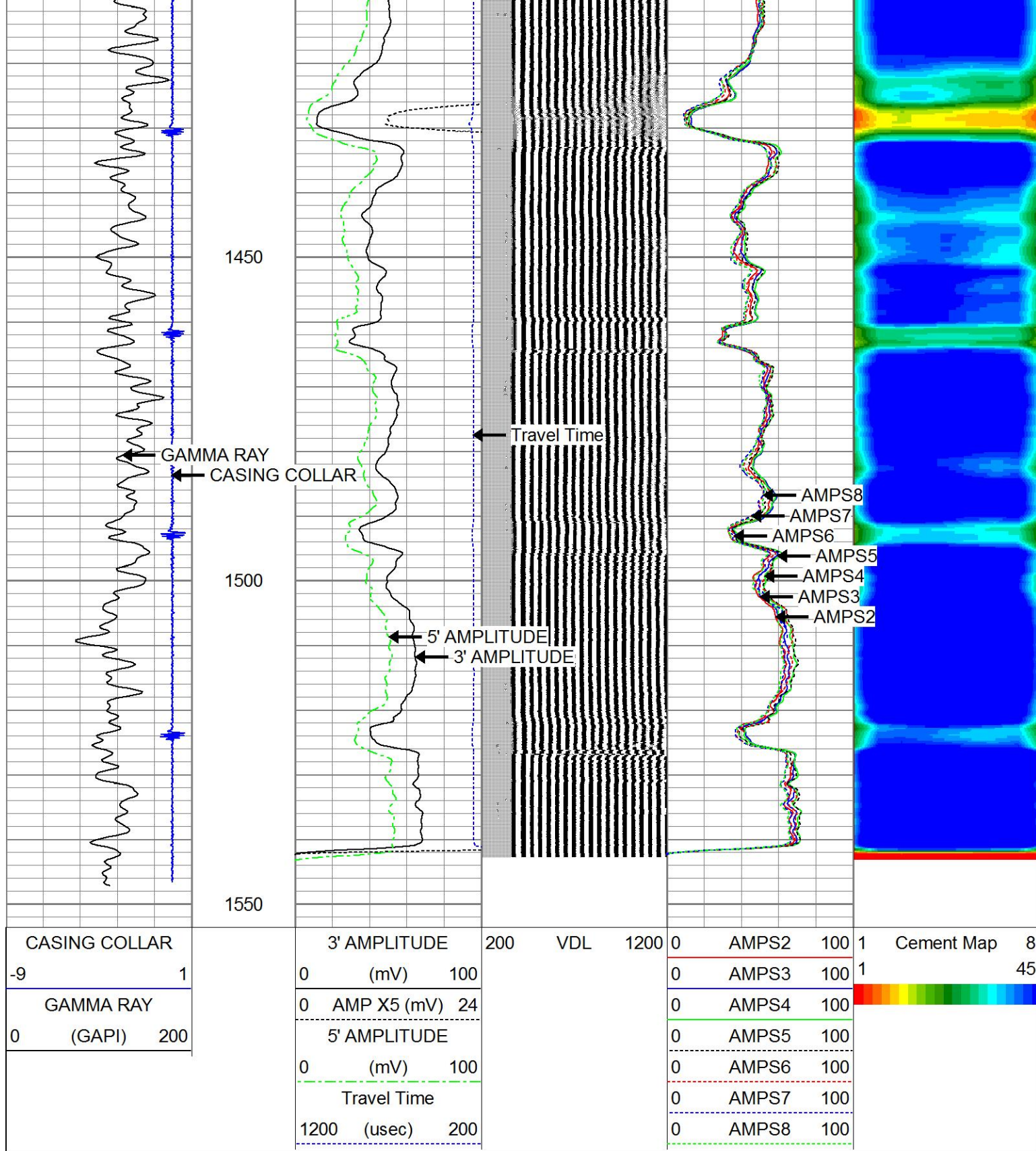












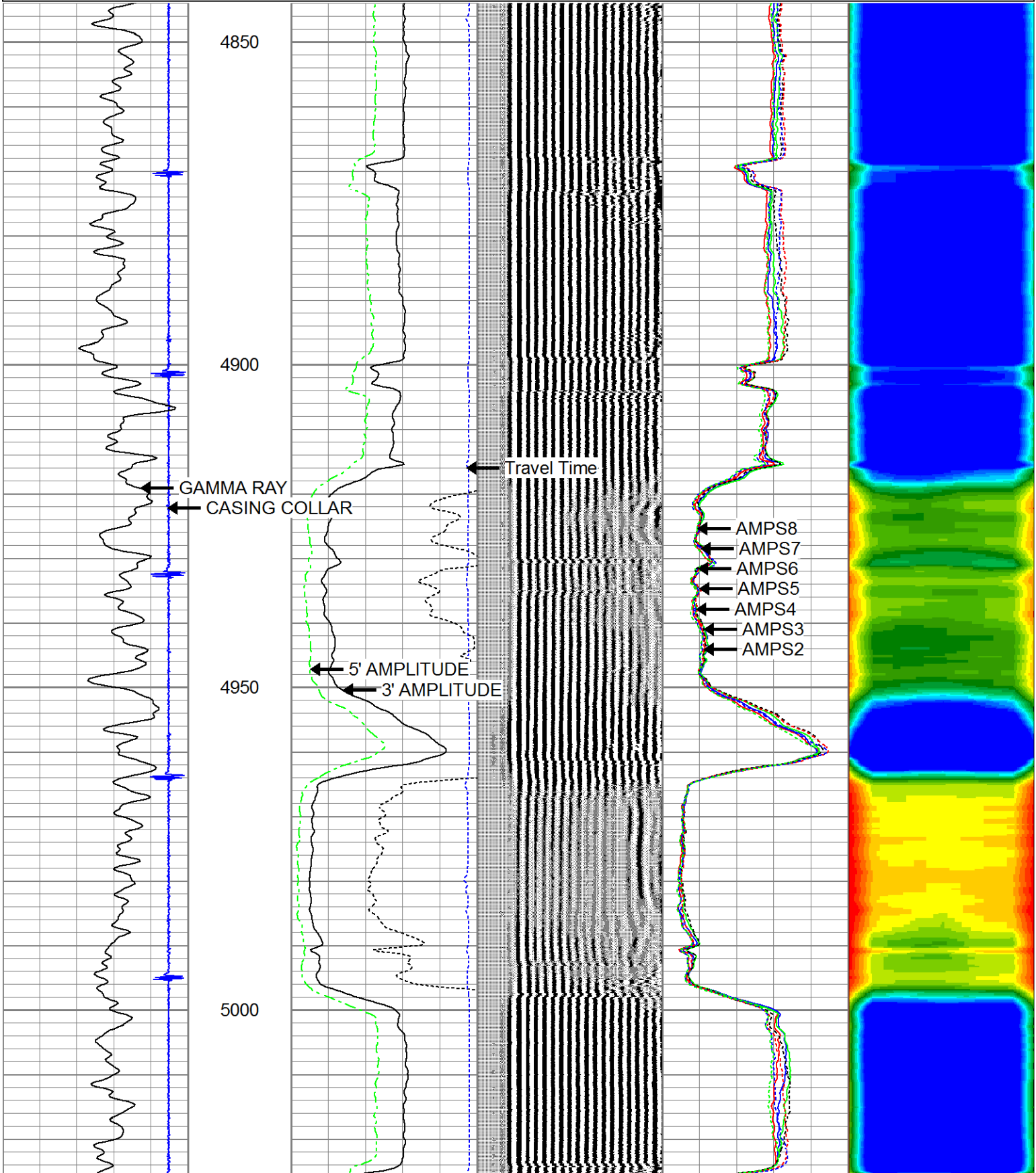
## MIDDLE PASS

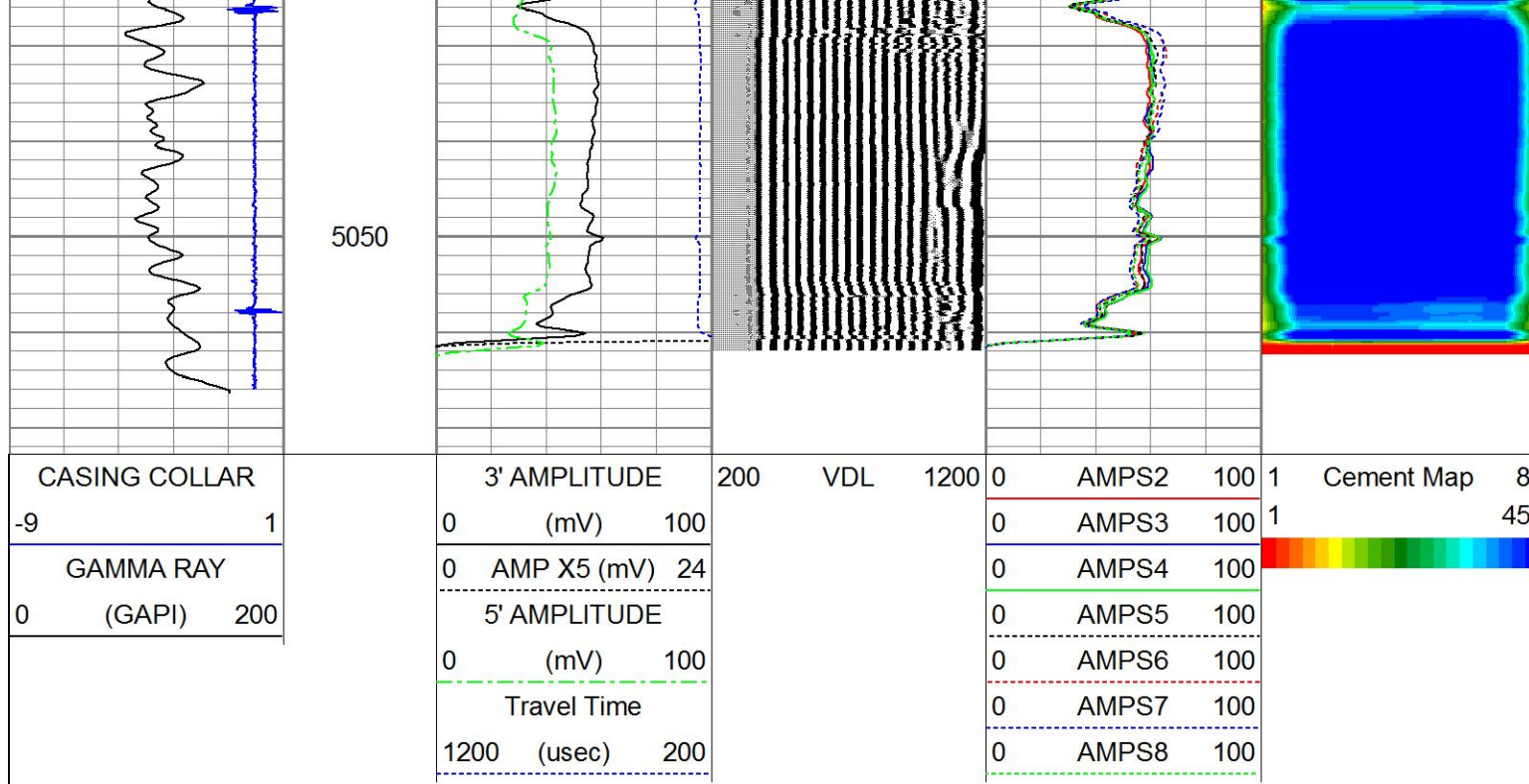
5" = 100'

Database File encanaseltzer1cbl.db  
 Dataset Pathname pass3.1  
 Presentation Format rst4inplo  
 Dataset Creation Thu Apr 03 18:10:01 2014  
 Charted by Depth in Feet scaled 1:240



Casing Collar		3' Amplitude		200	VDL	1200	0	AMPS2	100	1	Cement Map	8
-9	1	0	(mV)	100			0	AMPS3	100	1		45
GAMMA RAY		0	AMP X5 (mV)	24			0	AMPS4	100			
0	(GAPI)	200	5' Amplitude				0	AMPS5	100			
			0	(mV)	100		0	AMPS6	100			
			Travel Time				0	AMPS7	100			
			1200	(usec)	200		0	AMPS8	100			

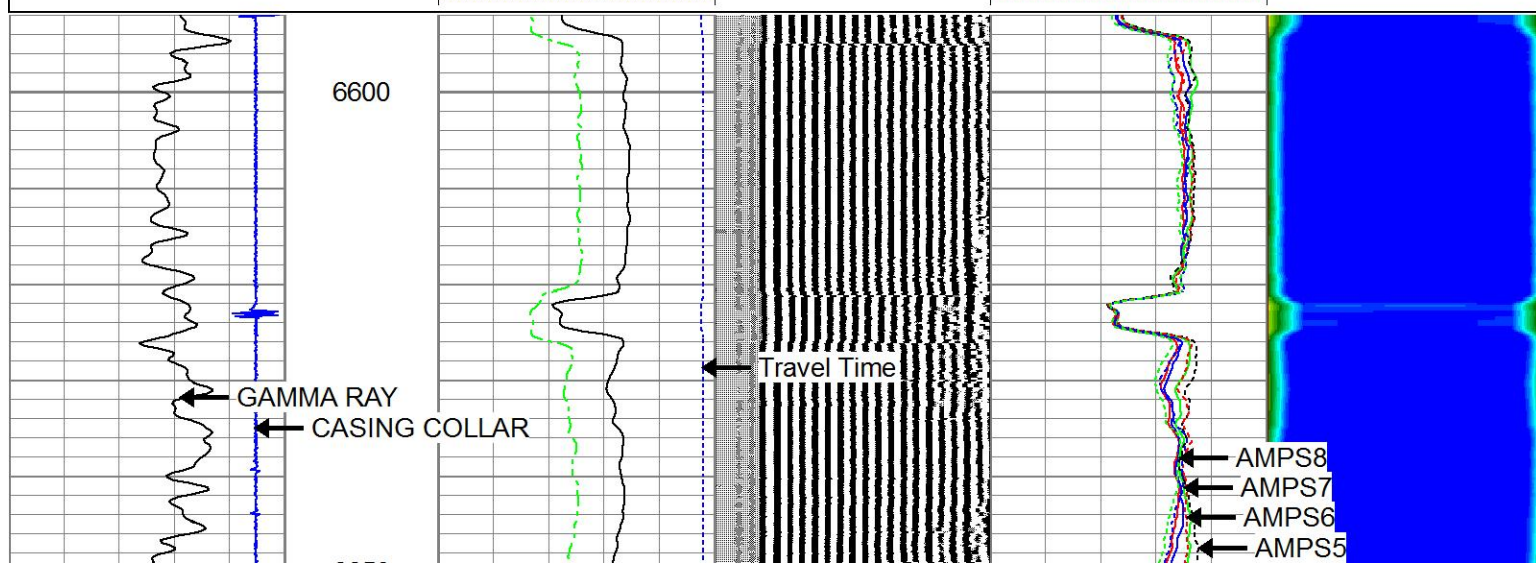
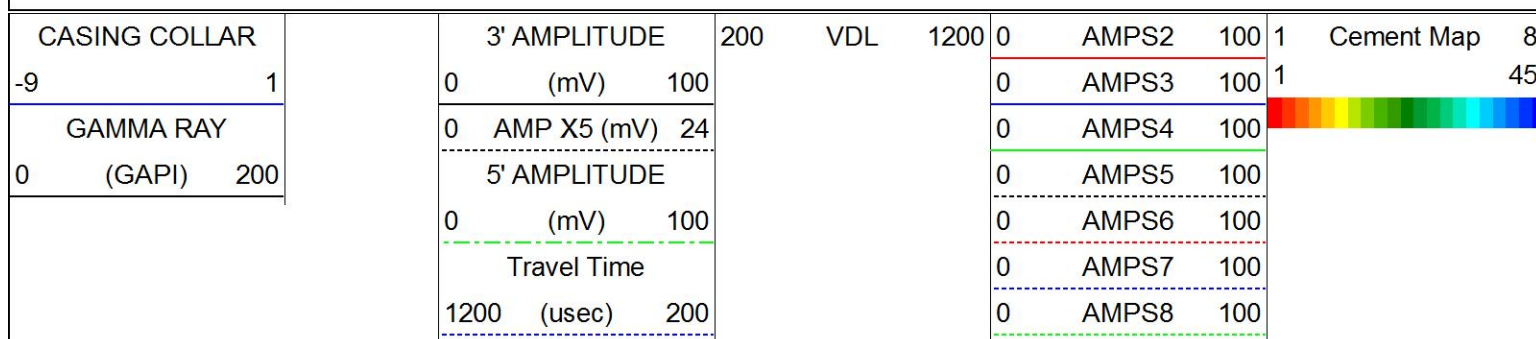




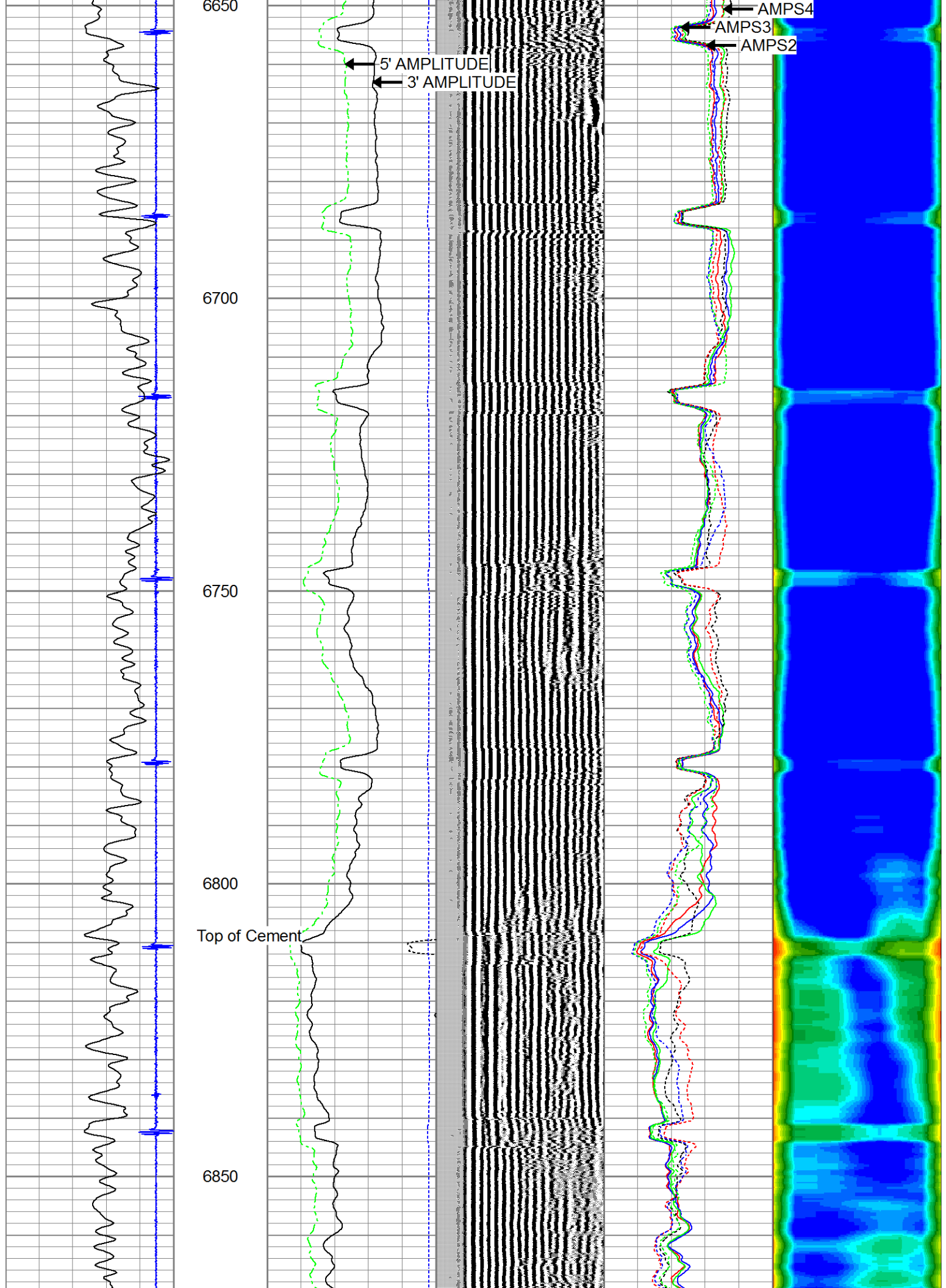
## BOTTOM PASS

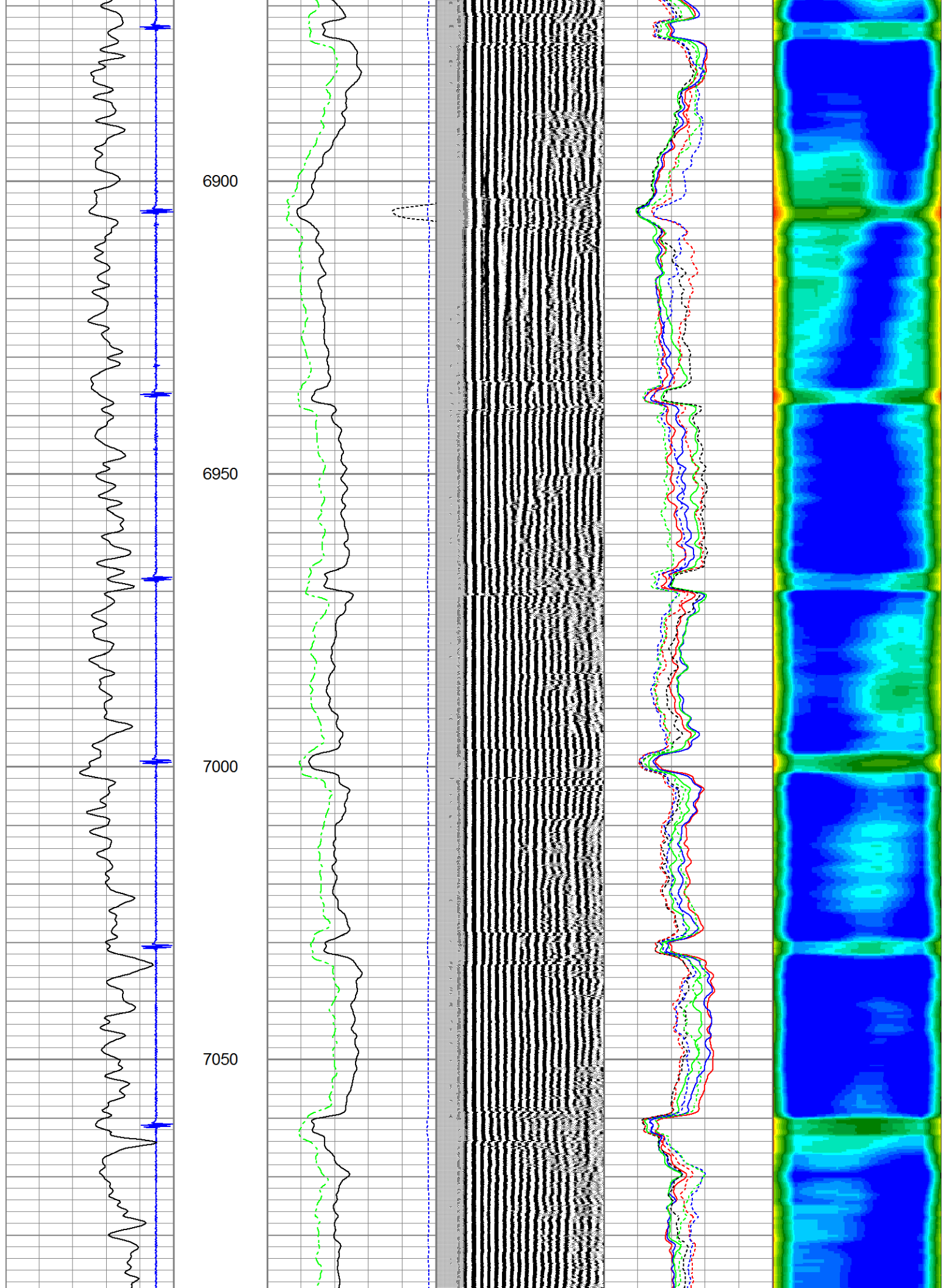
5" = 100'

Database File encanaseltzer1cbl.db  
 Dataset Pathname pass2.2  
 Presentation Format rst4inplo  
 Dataset Creation Thu Apr 03 18:04:32 2014  
 Charted by Depth in Feet scaled 1:240

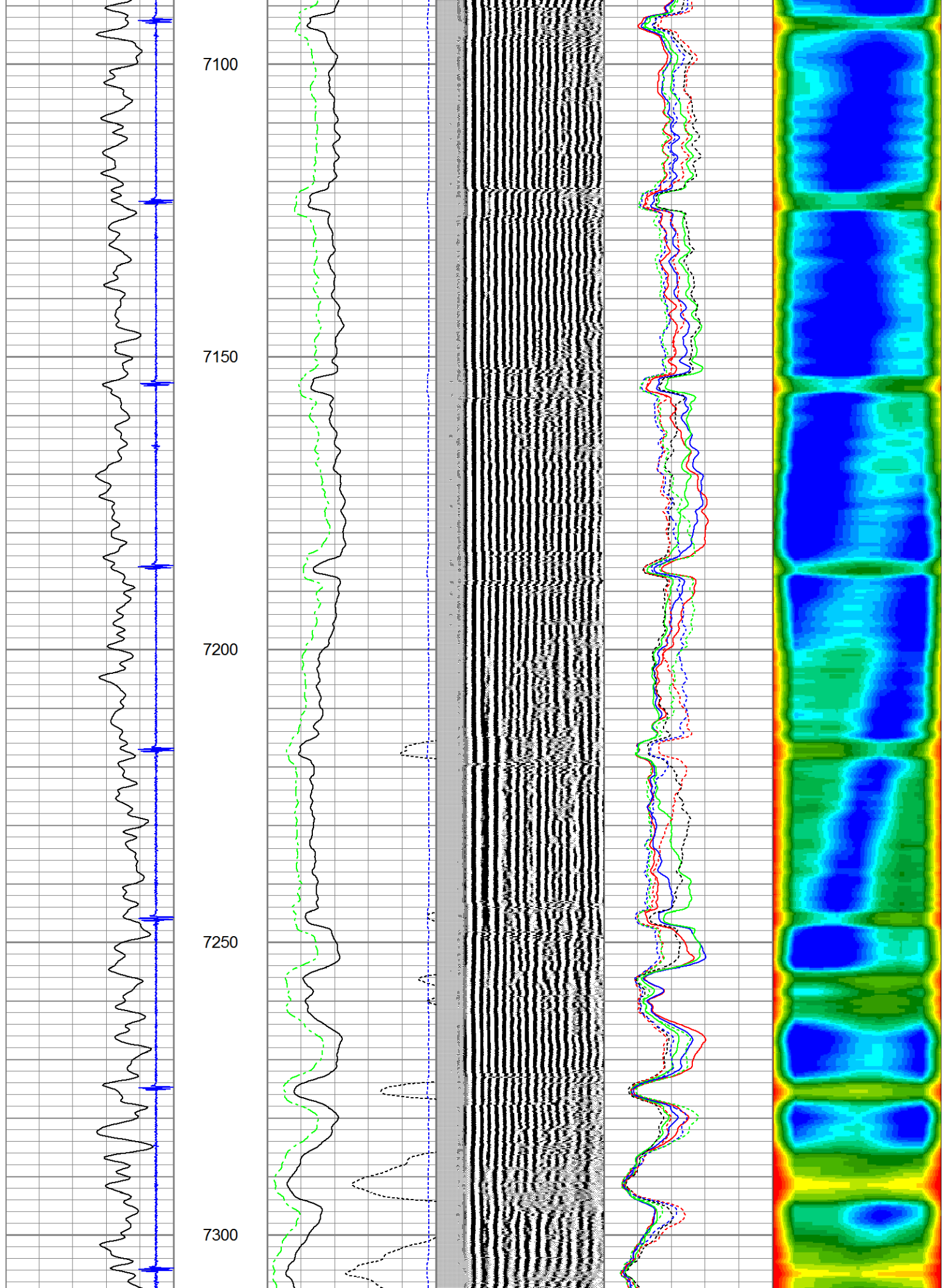


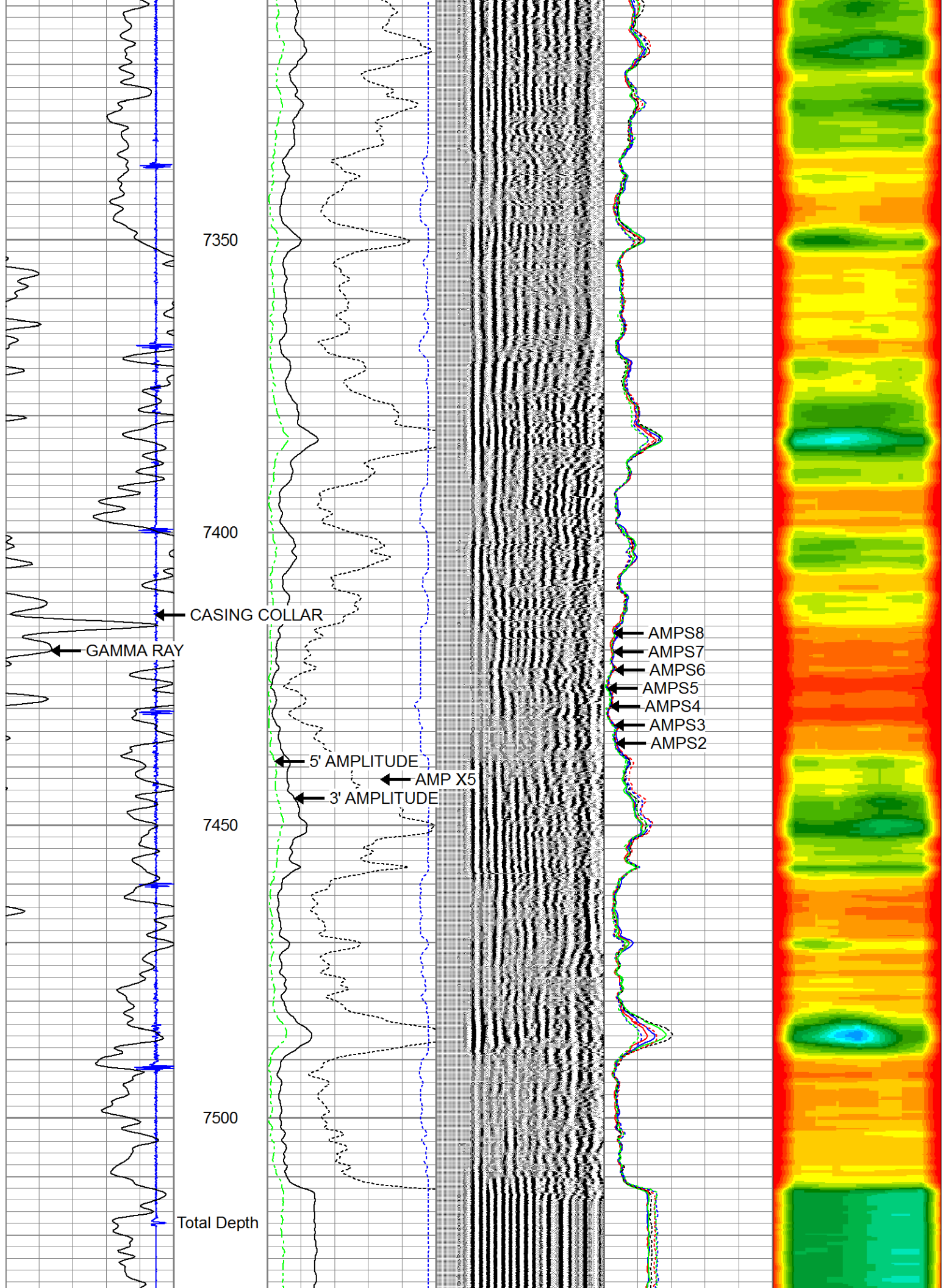






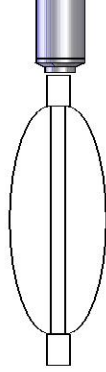












CENT-Probe169  
Probe Long 1 11/16" Centralizer

3.13

1.69

5.00

Dataset:	encanaseltzer1.cbl.db: field/well/run1/pass4.1
Total length:	20.00 ft
Total weight:	130.00 lb
O.D.:	2.75 in



Company	ENCANA OIL & GAS (USA) INC.
Well	SELTZER #1
Field	WATTENBURG
County	WELD
State	COLORADO

Country	USA
---------	-----