

EXTRACTION OIL & GAS

Location: COLORADO Slot: SLOT#04 WINDER #4(754'FNL & 684'FEL,SEC.09)
Field: WELD COUNTY (NAD83/TRUE NORTH) Well: WINDER #4
Facility: SEC.09-T06N-R67W Wellbore: WINDER #4 PWB

Plot reference wellpath is WINDER #4 (REV-A.0) PWP

True vertical depths are referenced to RIG (RKB)	Grid System: NAD83 / Lambert Colorado SP, Northern Zone (501), US feet
Measured depths are referenced to RIG (RKB)	North Reference: True north
RIG (RKB) to Mean Sea Level: 4892 feet	Scale: True distance
Mean Sea Level to Mud line (At Slot: SLOT#04 WINDER #4(754'FNL & 684'FEL,SEC.09)): 0 feet	Depths are in feet
Coordinates are in feet referenced to Slot	Created by: painsett on 4/8/2014

Location Information

Facility Name				Grid East (US ft)	Grid North (US ft)	Latitude	Longitude
SEC.09-T06N-R67W				3169265.228	1428175.850	40°30'25.736"N	104°53'28.612"W
Slot	Local N (ft)	Local E (ft)	Grid East (US ft)	Grid North (US ft)	Latitude	Longitude	
SLOT#04 WINDER #4(754FNL & 684FEL,SEC.09)	-77.92	-0.54	3169265.222	1428097.927	40°30'24.966"N	104°53'28.619"W	
RIG (RKB) to Mud line (At Slot: SLOT#04 WINDER #4(754FNL & 684FEL,SEC.09))						4892ft	
Mean Sea Level to Mud line (At Slot: SLOT#04 WINDER #4(754FNL & 684FEL,SEC.09))						0ft	
RIG (RKB) to Mean Sea Level						4892ft	

Targets

Name	MD (ft)	TVD (ft)	Local N (ft)	Local E (ft)	Grid East (US ft)	Grid North (US ft)	Latitude	Longitude
TWELL/WINDER 1/2 SECTION 08		56.00	-3256.26	-9584.16	3159703.97	1424776.07	40°29'52.771"N	104°55'32.678"W
TWELL/WINDER 1/2 SECTION 09		56.00	-3256.26	-9584.16	3159703.97	1424776.07	40°29'52.771"N	104°55'32.678"W
TWELL/WINDER SECTION 08		56.00	-3256.26	-9584.16	3159703.97	1424776.07	40°29'52.771"N	104°55'32.678"W
TWELL/WINDER SECTION 09		56.00	-3256.26	-9584.16	3159703.97	1424776.07	40°29'52.771"N	104°55'32.678"W
WINDER #4 BHL ON PLAT REV-1(469'FNL & 460'FWL,SEC.08)	17426.28	7414.00	118.36	-9359.58	3159905.38	1428152.03	40°30'26.118"N	104°55'29.788"W
WINDER #4 LANDING POINT	7841.68	7414.00	93.27	-224.98	3169489.55	1428192.73	40°30'25.888"N	104°53'25.706"W
WINDER PAD NORTH 1/4 HARDLINES(460' SETBACKS)		7446.00	-3256.26	-9584.16	3159703.97	1424776.07	40°29'52.771"N	104°55'32.678"W

Survey Program

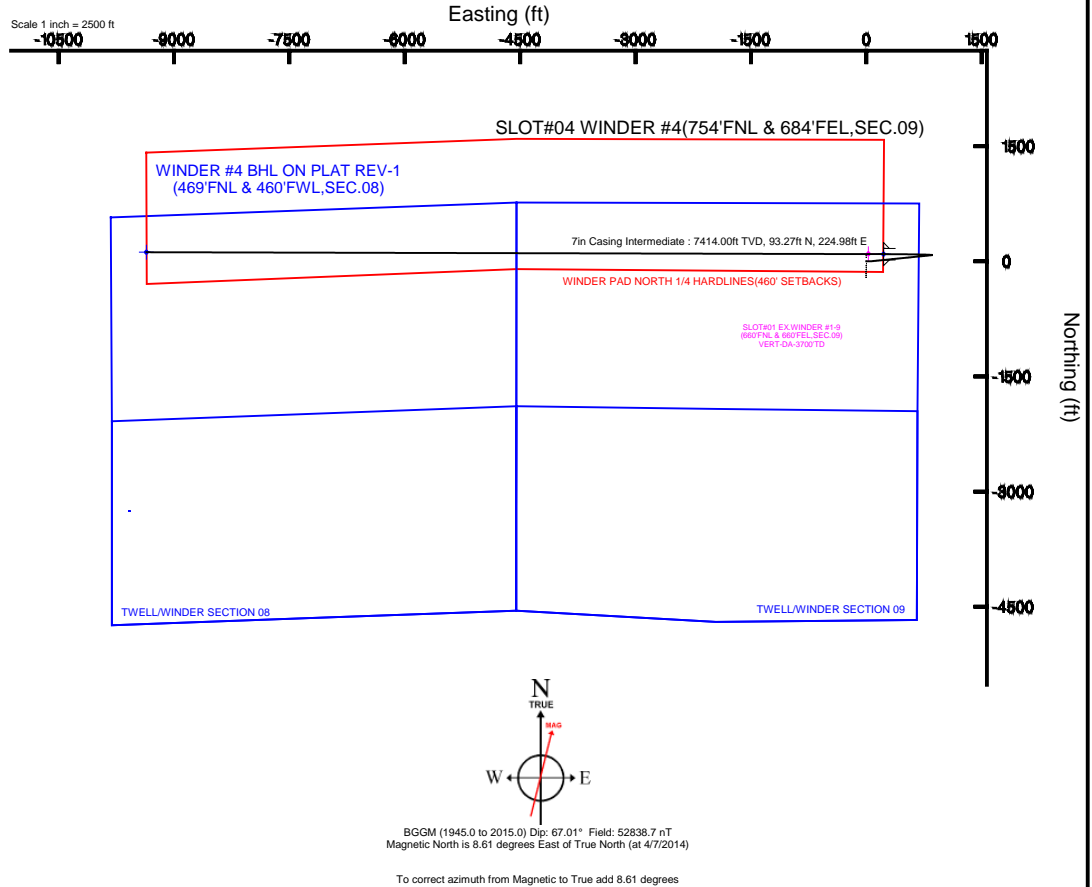
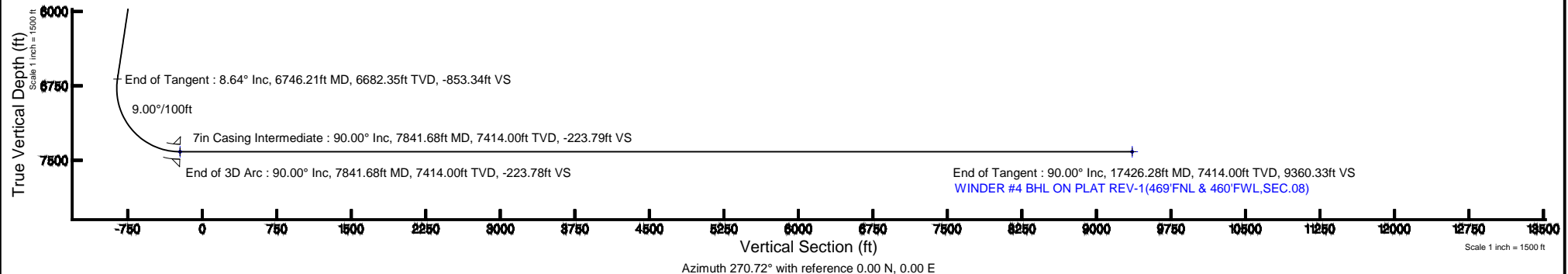
Start MD (ft)	End MD (ft)	Tool	Model	Log Name/Comment	Wellbore
24.00	19000.00	NaviTrak	NaviTrak (Standard)		WINDER #4 PWB

Well Profile Data

Design Comment	MD (ft)	Inc (°)	Az (°)	TVD (ft)	Local N (ft)	Local E (ft)	DLS (°/100ft)	VS (ft)
Tie On	24.00	0.000	90.000	24.00	0.00	0.00	0.00	0.00
End of Tangent	800.00	0.000	90.000	800.00	0.00	0.00	0.00	0.00
End of Build	1200.00	8.000	90.000	1198.70	0.00	27.88	2.00	-27.88
End of Tangent	1400.00	8.000	90.000	1396.76	0.00	55.71	0.00	-55.71
End of 3D Arc	1452.46	8.639	84.242	1448.66	0.40	63.29	2.00	-63.27
End of Tangent	6746.21	8.639	84.242	6682.35	80.18	854.42	0.00	-853.34
End of 3D Arc	7841.68	90.000	270.150	7414.00	93.27	224.98	9.00	-223.78
End of Tangent	17426.28	90.000	270.150	7414.00	118.36	-9359.58	0.00	9360.33

Wellpath Comments

MD (ft)	X (ft)	Y (ft)	TVD (ft)	Inclination (°)	Azimuth (°)	VS (ft)	Comment
7301.13	702.87	88.64	7198.00	41.359	271.168	-701.69	NIO A
7392.47	637.83	89.81	7262.00	49.577	270.913	-636.64	NIO B
7487.49	561.17	90.89	7318.00	58.128	270.707	-559.98	NIO C
7620.60	441.65	92.11	7376.00	70.105	270.474	-440.45	FORT HAYS
7689.93	375.30	92.59	7396.00	76.344	270.368	-374.10	CODELL





Planned Wellpath Report

WINDER #4 (REV-A.0) PWP

Page 1 of 10



REFERENCE WELLPATH IDENTIFICATION

Operator	EXTRACTION OIL & GAS	Slot	SLOT#04 WINDER #4(754'FNL & 684'FEL,SEC.09)
Area	COLORADO	Well	WINDER #4
Field	WELD COUNTY (NAD83/TRUE NORTH)	Wellbore	WINDER #4 PWB
Facility	SEC.09-T06N-R67W		

REPORT SETUP INFORMATION

Projection System	NAD83 / Lambert Colorado SP, Northern Zone (501), US feet	Software System	WellArchitect® 4.0.0
North Reference	True	User	Painsetr
Scale	0.999967	Report Generated	4/8/2014 at 10:57:12 AM
Convergence at slot	n/a	Database/Source file	WA_Denver/WINDER_#4_PWB.xml

WELLPATH LOCATION

	Local coordinates		Grid coordinates		Geographic coordinates	
	North[ft]	East[ft]	Easting[US ft]	Northing[US ft]	Latitude	Longitude
Slot Location	-77.92	-0.54	3169265.22	1428097.93	40°30'24.966"N	104°53'28.619"W
Facility Reference Pt			3169265.23	1428175.85	40°30'25.736"N	104°53'28.612"W
Field Reference Pt			3185481.27	1419166.81	40°28'55.560"N	104°49'59.556"W

WELLPATH DATUM

Calculation method	Minimum curvature	RIG (RKB) to Facility Vertical Datum	4892.00ft
Horizontal Reference Pt	Slot	RIG (RKB) to Mean Sea Level	4892.00ft
Vertical Reference Pt	RIG (RKB)	RIG (RKB) to Mud Line at Slot (SLOT#04 WINDER #4(754'FNL & 684'FEL,SEC.09))	4892.00ft
MD Reference Pt	RIG (RKB)	Section Origin	N 0.00, E 0.00 ft
Field Vertical Reference	Mean Sea Level	Section Azimuth	270.72°



Planned Wellpath Report

WINDER #4 (REV-A.0) PWP

Page 2 of 10



REFERENCE WELLPATH IDENTIFICATION

Operator	EXTRACTION OIL & GAS	Slot	SLOT#04 WINDER #4(754'FNL & 684'FEL,SEC.09)
Area	COLORADO	Well	WINDER #4
Field	WELD COUNTY (NAD83/TRUE NORTH)	Wellbore	WINDER #4 PWB
Facility	SEC.09-T06N-R67W		

WELLPATH DATA (183 stations) † = interpolated/extrapolated station

MD [ft]	Inclination [°]	Azimuth [°]	TVD [ft]	Vert Sect [ft]	North [ft]	East [ft]	DLS [°/100ft]	Comments
0.00†	0.000	90.000	0.00	0.00	0.00	0.00	0.00	
24.00	0.000	90.000	24.00	0.00	0.00	0.00	0.00	Tie On
124.00†	0.000	90.000	124.00	0.00	0.00	0.00	0.00	
224.00†	0.000	90.000	224.00	0.00	0.00	0.00	0.00	
324.00†	0.000	90.000	324.00	0.00	0.00	0.00	0.00	
424.00†	0.000	90.000	424.00	0.00	0.00	0.00	0.00	
524.00†	0.000	90.000	524.00	0.00	0.00	0.00	0.00	
624.00†	0.000	90.000	624.00	0.00	0.00	0.00	0.00	
724.00†	0.000	90.000	724.00	0.00	0.00	0.00	0.00	
800.00	0.000	90.000	800.00	0.00	0.00	0.00	0.00	End of Tangent
824.00†	0.480	90.000	824.00	-0.10	0.00	0.10	2.00	
924.00†	2.480	90.000	923.96	-2.68	0.00	2.68	2.00	
1024.00†	4.480	90.000	1023.77	-8.75	0.00	8.75	2.00	
1124.00†	6.480	90.000	1123.31	-18.30	0.00	18.30	2.00	
1200.00	8.000	90.000	1198.70	-27.88	0.00	27.88	2.00	End of Build
1224.00†	8.000	90.000	1222.47	-31.22	0.00	31.22	0.00	
1324.00†	8.000	90.000	1321.49	-45.13	0.00	45.14	0.00	
1400.00	8.000	90.000	1396.76	-55.71	0.00	55.71	0.00	End of Tangent
1424.00†	8.282	87.256	1420.51	-59.11	0.08	59.11	2.00	
1452.46	8.639	84.242	1448.66	-63.27	0.40	63.29	2.00	End of 3D Arc
1524.00†	8.639	84.242	1519.39	-73.95	1.47	73.98	0.00	
1624.00†	8.639	84.242	1618.26	-88.88	2.98	88.92	0.00	
1724.00†	8.639	84.242	1717.12	-103.80	4.49	103.87	0.00	
1824.00†	8.639	84.242	1815.99	-118.73	5.99	118.81	0.00	
1924.00†	8.639	84.242	1914.85	-133.65	7.50	133.76	0.00	
2024.00†	8.639	84.242	2013.72	-148.57	9.01	148.70	0.00	
2124.00†	8.639	84.242	2112.58	-163.50	10.52	163.65	0.00	
2224.00†	8.639	84.242	2211.45	-178.42	12.02	178.59	0.00	
2324.00†	8.639	84.242	2310.32	-193.35	13.53	193.53	0.00	
2424.00†	8.639	84.242	2409.18	-208.27	15.04	208.48	0.00	



Planned Wellpath Report

WINDER #4 (REV-A.0) PWP

Page 3 of 10



REFERENCE WELLPATH IDENTIFICATION

Operator	EXTRACTION OIL & GAS	Slot	SLOT#04 WINDER #4(754'FNL & 684'FEL,SEC.09)
Area	COLORADO	Well	WINDER #4
Field	WELD COUNTY (NAD83/TRUE NORTH)	Wellbore	WINDER #4 PWB
Facility	SEC.09-T06N-R67W		

WELLPATH DATA (183 stations) † = interpolated/extrapolated station

MD [ft]	Inclination [°]	Azimuth [°]	TVD [ft]	Vert Sect [ft]	North [ft]	East [ft]	DLS [°/100ft]	Comments
2524.00†	8.639	84.242	2508.05	-223.20	16.54	223.42	0.00	
2624.00†	8.639	84.242	2606.91	-238.12	18.05	238.37	0.00	
2724.00†	8.639	84.242	2705.78	-253.05	19.56	253.31	0.00	
2824.00†	8.639	84.242	2804.64	-267.97	21.07	268.26	0.00	
2924.00†	8.639	84.242	2903.51	-282.90	22.57	283.20	0.00	
3024.00†	8.639	84.242	3002.37	-297.82	24.08	298.15	0.00	
3124.00†	8.639	84.242	3101.24	-312.74	25.59	313.09	0.00	
3224.00†	8.639	84.242	3200.11	-327.67	27.09	328.04	0.00	
3324.00†	8.639	84.242	3298.97	-342.59	28.60	342.98	0.00	
3424.00†	8.639	84.242	3397.84	-357.52	30.11	357.93	0.00	
3524.00†	8.639	84.242	3496.70	-372.44	31.62	372.87	0.00	
3624.00†	8.639	84.242	3595.57	-387.37	33.12	387.82	0.00	
3724.00†	8.639	84.242	3694.43	-402.29	34.63	402.76	0.00	
3824.00†	8.639	84.242	3793.30	-417.22	36.14	417.71	0.00	
3924.00†	8.639	84.242	3892.16	-432.14	37.64	432.65	0.00	
4024.00†	8.639	84.242	3991.03	-447.07	39.15	447.60	0.00	
4124.00†	8.639	84.242	4089.89	-461.99	40.66	462.54	0.00	
4224.00†	8.639	84.242	4188.76	-476.91	42.16	477.49	0.00	
4324.00†	8.639	84.242	4287.63	-491.84	43.67	492.43	0.00	
4424.00†	8.639	84.242	4386.49	-506.76	45.18	507.38	0.00	
4524.00†	8.639	84.242	4485.36	-521.69	46.69	522.32	0.00	
4624.00†	8.639	84.242	4584.22	-536.61	48.19	537.26	0.00	
4724.00†	8.639	84.242	4683.09	-551.54	49.70	552.21	0.00	
4824.00†	8.639	84.242	4781.95	-566.46	51.21	567.15	0.00	
4924.00†	8.639	84.242	4880.82	-581.39	52.71	582.10	0.00	
5024.00†	8.639	84.242	4979.68	-596.31	54.22	597.04	0.00	
5124.00†	8.639	84.242	5078.55	-611.24	55.73	611.99	0.00	
5224.00†	8.639	84.242	5177.41	-626.16	57.24	626.93	0.00	
5324.00†	8.639	84.242	5276.28	-641.08	58.74	641.88	0.00	
5424.00†	8.639	84.242	5375.15	-656.01	60.25	656.82	0.00	



Planned Wellpath Report

WINDER #4 (REV-A.0) PWP

Page 4 of 10



REFERENCE WELLPATH IDENTIFICATION

Operator	EXTRACTION OIL & GAS	Slot	SLOT#04 WINDER #4(754'FNL & 684'FEL,SEC.09)
Area	COLORADO	Well	WINDER #4
Field	WELD COUNTY (NAD83/TRUE NORTH)	Wellbore	WINDER #4 PWB
Facility	SEC.09-T06N-R67W		

WELLPATH DATA (183 stations) † = interpolated/extrapolated station

MD [ft]	Inclination [°]	Azimuth [°]	TVD [ft]	Vert Sect [ft]	North [ft]	East [ft]	DLS [°/100ft]	Comments
5524.00†	8.639	84.242	5474.01	-670.93	61.76	671.77	0.00	
5624.00†	8.639	84.242	5572.88	-685.86	63.26	686.71	0.00	
5724.00†	8.639	84.242	5671.74	-700.78	64.77	701.66	0.00	
5824.00†	8.639	84.242	5770.61	-715.71	66.28	716.60	0.00	
5924.00†	8.639	84.242	5869.47	-730.63	67.78	731.55	0.00	
6024.00†	8.639	84.242	5968.34	-745.56	69.29	746.49	0.00	
6124.00†	8.639	84.242	6067.20	-760.48	70.80	761.44	0.00	
6224.00†	8.639	84.242	6166.07	-775.40	72.31	776.38	0.00	
6324.00†	8.639	84.242	6264.94	-790.33	73.81	791.33	0.00	
6424.00†	8.639	84.242	6363.80	-805.25	75.32	806.27	0.00	
6524.00†	8.639	84.242	6462.67	-820.18	76.83	821.22	0.00	
6624.00†	8.639	84.242	6561.53	-835.10	78.33	836.16	0.00	
6724.00†	8.639	84.242	6660.40	-850.03	79.84	851.10	0.00	
6746.21	8.639	84.242	6682.35	-853.34	80.18	854.42	0.00	End of Tangent
6824.00†	1.826	60.777	6759.78	-860.23	81.37	861.33	9.00	
6924.00†	7.462	277.007	6859.54	-855.15	82.94	856.26	9.00	
7024.00†	16.432	273.190	6957.27	-834.52	84.52	835.65	9.00	
7124.00†	25.423	272.035	7050.58	-798.85	86.08	800.01	9.00	
7224.00†	34.419	271.458	7137.16	-749.03	87.56	750.20	9.00	
7324.00†	43.416	271.097	7214.89	-686.28	88.94	687.46	9.00	
7424.00†	52.414	270.840	7281.84	-612.14	90.18	613.33	9.00	
7524.00†	61.412	270.638	7336.38	-528.44	91.26	529.64	9.00	
7624.00†	70.411	270.469	7377.15	-437.24	92.13	438.44	9.00	
7724.00†	79.410	270.318	7403.16	-340.79	92.79	341.99	9.00	
7824.00†	88.409	270.175	7413.75	-241.46	93.22	242.66	9.00	
7841.68	90.000	270.150	7414.00 ¹	-223.78	93.27	224.98	9.00	End of 3D Arc
7924.00†	90.000	270.150	7414.00	-141.47	93.48	142.66	0.00	
8024.00†	90.000	270.150	7414.00	-41.48	93.74	42.66	0.00	
8124.00†	90.000	270.150	7414.00	58.52	94.01	-57.33	0.00	
8224.00†	90.000	270.150	7414.00	158.51	94.27	-157.33	0.00	



Planned Wellpath Report

WINDER #4 (REV-A.0) PWP

Page 5 of 10



REFERENCE WELLPATH IDENTIFICATION

Operator	EXTRACTION OIL & GAS	Slot	SLOT#04 WINDER #4(754'FNL & 684'FEL,SEC.09)
Area	COLORADO	Well	WINDER #4
Field	WELD COUNTY (NAD83/TRUE NORTH)	Wellbore	WINDER #4 PWB
Facility	SEC.09-T06N-R67W		

WELLPATH DATA (183 stations) † = interpolated/extrapolated station

MD [ft]	Inclination [°]	Azimuth [°]	TVD [ft]	Vert Sect [ft]	North [ft]	East [ft]	DLS [°/100ft]	Comments
8324.00†	90.000	270.150	7414.00	258.51	94.53	-257.33	0.00	
8424.00†	90.000	270.150	7414.00	358.50	94.79	-357.33	0.00	
8524.00†	90.000	270.150	7414.00	458.50	95.05	-457.33	0.00	
8624.00†	90.000	270.150	7414.00	558.49	95.31	-557.33	0.00	
8724.00†	90.000	270.150	7414.00	658.49	95.58	-657.33	0.00	
8824.00†	90.000	270.150	7414.00	758.48	95.84	-757.33	0.00	
8924.00†	90.000	270.150	7414.00	858.48	96.10	-857.33	0.00	
9024.00†	90.000	270.150	7414.00	958.47	96.36	-957.33	0.00	
9124.00†	90.000	270.150	7414.00	1058.47	96.62	-1057.33	0.00	
9224.00†	90.000	270.150	7414.00	1158.46	96.89	-1157.33	0.00	
9324.00†	90.000	270.150	7414.00	1258.46	97.15	-1257.33	0.00	
9424.00†	90.000	270.150	7414.00	1358.45	97.41	-1357.33	0.00	
9524.00†	90.000	270.150	7414.00	1458.45	97.67	-1457.33	0.00	
9624.00†	90.000	270.150	7414.00	1558.44	97.93	-1557.33	0.00	
9724.00†	90.000	270.150	7414.00	1658.44	98.19	-1657.33	0.00	
9824.00†	90.000	270.150	7414.00	1758.43	98.46	-1757.33	0.00	
9924.00†	90.000	270.150	7414.00	1858.43	98.72	-1857.33	0.00	
10024.00†	90.000	270.150	7414.00	1958.42	98.98	-1957.33	0.00	
10124.00†	90.000	270.150	7414.00	2058.42	99.24	-2057.33	0.00	
10224.00†	90.000	270.150	7414.00	2158.41	99.50	-2157.33	0.00	
10324.00†	90.000	270.150	7414.00	2258.41	99.77	-2257.33	0.00	
10424.00†	90.000	270.150	7414.00	2358.40	100.03	-2357.33	0.00	
10524.00†	90.000	270.150	7414.00	2458.40	100.29	-2457.33	0.00	
10624.00†	90.000	270.150	7414.00	2558.39	100.55	-2557.33	0.00	
10724.00†	90.000	270.150	7414.00	2658.39	100.81	-2657.33	0.00	
10824.00†	90.000	270.150	7414.00	2758.38	101.07	-2757.33	0.00	
10924.00†	90.000	270.150	7414.00	2858.38	101.34	-2857.33	0.00	
11024.00†	90.000	270.150	7414.00	2958.37	101.60	-2957.32	0.00	
11124.00†	90.000	270.150	7414.00	3058.37	101.86	-3057.32	0.00	
11224.00†	90.000	270.150	7414.00	3158.36	102.12	-3157.32	0.00	



Planned Wellpath Report

WINDER #4 (REV-A.0) PWP

Page 6 of 10



REFERENCE WELLPATH IDENTIFICATION

Operator	EXTRACTION OIL & GAS	Slot	SLOT#04 WINDER #4(754'FNL & 684'FEL,SEC.09)
Area	COLORADO	Well	WINDER #4
Field	WELD COUNTY (NAD83/TRUE NORTH)	Wellbore	WINDER #4 PWB
Facility	SEC.09-T06N-R67W		

WELLPATH DATA (183 stations) † = interpolated/extrapolated station

MD [ft]	Inclination [°]	Azimuth [°]	TVD [ft]	Vert Sect [ft]	North [ft]	East [ft]	DLS [°/100ft]	Comments
11324.00†	90.000	270.150	7414.00	3258.36	102.38	-3257.32	0.00	
11424.00†	90.000	270.150	7414.00	3358.35	102.64	-3357.32	0.00	
11524.00†	90.000	270.150	7414.00	3458.35	102.91	-3457.32	0.00	
11624.00†	90.000	270.150	7414.00	3558.34	103.17	-3557.32	0.00	
11724.00†	90.000	270.150	7414.00	3658.34	103.43	-3657.32	0.00	
11824.00†	90.000	270.150	7414.00	3758.33	103.69	-3757.32	0.00	
11924.00†	90.000	270.150	7414.00	3858.33	103.95	-3857.32	0.00	
12024.00†	90.000	270.150	7414.00	3958.32	104.22	-3957.32	0.00	
12124.00†	90.000	270.150	7414.00	4058.32	104.48	-4057.32	0.00	
12224.00†	90.000	270.150	7414.00	4158.31	104.74	-4157.32	0.00	
12324.00†	90.000	270.150	7414.00	4258.31	105.00	-4257.32	0.00	
12424.00†	90.000	270.150	7414.00	4358.30	105.26	-4357.32	0.00	
12524.00†	90.000	270.150	7414.00	4458.30	105.52	-4457.32	0.00	
12624.00†	90.000	270.150	7414.00	4558.29	105.79	-4557.32	0.00	
12724.00†	90.000	270.150	7414.00	4658.29	106.05	-4657.32	0.00	
12824.00†	90.000	270.150	7414.00	4758.28	106.31	-4757.32	0.00	
12924.00†	90.000	270.150	7414.00	4858.28	106.57	-4857.32	0.00	
13024.00†	90.000	270.150	7414.00	4958.27	106.83	-4957.32	0.00	
13124.00†	90.000	270.150	7414.00	5058.27	107.10	-5057.32	0.00	
13224.00†	90.000	270.150	7414.00	5158.26	107.36	-5157.32	0.00	
13324.00†	90.000	270.150	7414.00	5258.26	107.62	-5257.32	0.00	
13424.00†	90.000	270.150	7414.00	5358.25	107.88	-5357.32	0.00	
13524.00†	90.000	270.150	7414.00	5458.25	108.14	-5457.32	0.00	
13624.00†	90.000	270.150	7414.00	5558.24	108.40	-5557.32	0.00	
13724.00†	90.000	270.150	7414.00	5658.24	108.67	-5657.32	0.00	
13824.00†	90.000	270.150	7414.00	5758.23	108.93	-5757.32	0.00	
13924.00†	90.000	270.150	7414.00	5858.23	109.19	-5857.31	0.00	
14024.00†	90.000	270.150	7414.00	5958.22	109.45	-5957.31	0.00	
14124.00†	90.000	270.150	7414.00	6058.22	109.71	-6057.31	0.00	
14224.00†	90.000	270.150	7414.00	6158.21	109.98	-6157.31	0.00	



Planned Wellpath Report

WINDER #4 (REV-A.0) PWP

Page 7 of 10



REFERENCE WELLPATH IDENTIFICATION

Operator	EXTRACTION OIL & GAS	Slot	SLOT#04 WINDER #4(754'FNL & 684'FEL,SEC.09)
Area	COLORADO	Well	WINDER #4
Field	WELD COUNTY (NAD83/TRUE NORTH)	Wellbore	WINDER #4 PWB
Facility	SEC.09-T06N-R67W		

WELLPATH DATA (183 stations) † = interpolated/extrapolated station

MD [ft]	Inclination [°]	Azimuth [°]	TVD [ft]	Vert Sect [ft]	North [ft]	East [ft]	DLS [°/100ft]	Comments
14324.00†	90.000	270.150	7414.00	6258.21	110.24	-6257.31	0.00	
14424.00†	90.000	270.150	7414.00	6358.20	110.50	-6357.31	0.00	
14524.00†	90.000	270.150	7414.00	6458.20	110.76	-6457.31	0.00	
14624.00†	90.000	270.150	7414.00	6558.19	111.02	-6557.31	0.00	
14724.00†	90.000	270.150	7414.00	6658.19	111.28	-6657.31	0.00	
14824.00†	90.000	270.150	7414.00	6758.18	111.55	-6757.31	0.00	
14924.00†	90.000	270.150	7414.00	6858.18	111.81	-6857.31	0.00	
15024.00†	90.000	270.150	7414.00	6958.17	112.07	-6957.31	0.00	
15124.00†	90.000	270.150	7414.00	7058.17	112.33	-7057.31	0.00	
15224.00†	90.000	270.150	7414.00	7158.16	112.59	-7157.31	0.00	
15324.00†	90.000	270.150	7414.00	7258.16	112.85	-7257.31	0.00	
15424.00†	90.000	270.150	7414.00	7358.15	113.12	-7357.31	0.00	
15524.00†	90.000	270.150	7414.00	7458.15	113.38	-7457.31	0.00	
15624.00†	90.000	270.150	7414.00	7558.14	113.64	-7557.31	0.00	
15724.00†	90.000	270.150	7414.00	7658.14	113.90	-7657.31	0.00	
15824.00†	90.000	270.150	7414.00	7758.13	114.16	-7757.31	0.00	
15924.00†	90.000	270.150	7414.00	7858.13	114.43	-7857.31	0.00	
16024.00†	90.000	270.150	7414.00	7958.12	114.69	-7957.31	0.00	
16124.00†	90.000	270.150	7414.00	8058.12	114.95	-8057.31	0.00	
16224.00†	90.000	270.150	7414.00	8158.11	115.21	-8157.31	0.00	
16324.00†	90.000	270.150	7414.00	8258.11	115.47	-8257.31	0.00	
16424.00†	90.000	270.150	7414.00	8358.10	115.73	-8357.31	0.00	
16524.00†	90.000	270.150	7414.00	8458.10	116.00	-8457.31	0.00	
16624.00†	90.000	270.150	7414.00	8558.09	116.26	-8557.31	0.00	
16724.00†	90.000	270.150	7414.00	8658.09	116.52	-8657.31	0.00	
16824.00†	90.000	270.150	7414.00	8758.08	116.78	-8757.31	0.00	
16924.00†	90.000	270.150	7414.00	8858.08	117.04	-8857.30	0.00	
17024.00†	90.000	270.150	7414.00	8958.07	117.31	-8957.30	0.00	
17124.00†	90.000	270.150	7414.00	9058.07	117.57	-9057.30	0.00	
17224.00†	90.000	270.150	7414.00	9158.06	117.83	-9157.30	0.00	



Planned Wellpath Report

WINDER #4 (REV-A.0) PWP

Page 8 of 10



REFERENCE WELLPATH IDENTIFICATION

Operator	EXTRACTION OIL & GAS	Slot	SLOT#04 WINDER #4(754'FNL & 684'FEL,SEC.09)
Area	COLORADO	Well	WINDER #4
Field	WELD COUNTY (NAD83/TRUE NORTH)	Wellbore	WINDER #4 PWB
Facility	SEC.09-T06N-R67W		

WELLPATH DATA (183 stations) † = interpolated/extrapolated station

MD [ft]	Inclination [°]	Azimuth [°]	TVD [ft]	Vert Sect [ft]	North [ft]	East [ft]	DLS [°/100ft]	Comments
17324.00†	90.000	270.150	7414.00	9258.06	118.09	-9257.30	0.00	
17424.00†	90.000	270.150	7414.00	9358.05	118.35	-9357.30	0.00	
17426.28	90.000	270.150	7414.00 ²	9360.33	118.36	-9359.58	0.00	End of Tangent

HOLE & CASING SECTIONS - Ref Wellbore: WINDER #4 PWB Ref Wellpath: WINDER #4 (REV-A.0) PWP

String/Diameter	Start MD [ft]	End MD [ft]	Interval [ft]	Start TVD [ft]	End TVD [ft]	Start N/S [ft]	Start E/W [ft]	End N/S [ft]	End E/W [ft]
7in Casing Intermediate	24.00	7841.68	7817.68	24.00	7414.00	0.00	0.00	93.27	224.98



Planned Wellpath Report

WINDER #4 (REV-A.0) PWP

Page 9 of 10



REFERENCE WELLPATH IDENTIFICATION			
Operator	EXTRACTION OIL & GAS	Slot	SLOT#04 WINDER #4(754'FNL & 684'FEL,SEC.09)
Area	COLORADO	Well	WINDER #4
Field	WELD COUNTY (NAD83/TRUE NORTH)	Wellbore	WINDER #4 PWB
Facility	SEC.09-T06N-R67W		

TARGETS									
Name	MD [ft]	TVD [ft]	North [ft]	East [ft]	Grid East [US ft]	Grid North [US ft]	Latitude	Longitude	Shape
TWELL/WINDER 1/2 SECTION 08		56.00	-3256.26	-9584.16	3159703.97	1424776.07	40°29'52.771"N	104°55'32.678"W	polygon
TWELL/WINDER 1/2 SECTION 09		56.00	-3256.26	-9584.16	3159703.97	1424776.07	40°29'52.771"N	104°55'32.678"W	polygon
TWELL/WINDER SECTION 08		56.00	-3256.26	-9584.16	3159703.97	1424776.07	40°29'52.771"N	104°55'32.678"W	polygon
TWELL/WINDER SECTION 09		56.00	-3256.26	-9584.16	3159703.97	1424776.07	40°29'52.771"N	104°55'32.678"W	polygon
2) WINDER #4 BHL ON PLAT REV-1(469'FNL & 460'FWL,SEC.08)	17426.28	7414.00	118.36	-9359.58	3159905.38	1428152.03	40°30'26.118"N	104°55'29.788"W	point
1) WINDER #4 LANDING POINT	7841.68	7414.00	93.27	224.98	3169489.55	1428192.73	40°30'25.888"N	104°53'25.706"W	point
WINDER PAD NORTH 1/4 HARDLINES(460' SETBACKS)		7446.00	-3256.26	-9584.16	3159703.97	1424776.07	40°29'52.771"N	104°55'32.678"W	polygon

SURVEY PROGRAM - Ref Wellbore: WINDER #4 PWB Ref Wellpath: WINDER #4 (REV-A.0) PWP				
Start MD [ft]	End MD [ft]	Positional Uncertainty Model	Log Name/Comment	Wellbore
24.00	19000.00	NaviTrak (Standard)		WINDER #4 PWB



Planned Wellpath Report

WINDER #4 (REV-A.0) PWP

Page 10 of 10



REFERENCE WELLPATH IDENTIFICATION

Operator	EXTRACTION OIL & GAS	Slot	SLOT#04 WINDER #4(754'FNL & 684'FEL,SEC.09)
Area	COLORADO	Well	WINDER #4
Field	WELD COUNTY (NAD83/TRUE NORTH)	Wellbore	WINDER #4 PWB
Facility	SEC.09-T06N-R67W		

WELLPATH COMMENTS

MD [ft]	Inclination [°]	Azimuth [°]	TVD [ft]	Comment
7301.13	41.359	271.168	7198.00	NIO A
7392.47	49.577	270.913	7262.00	NIO B
7487.49	58.128	270.707	7318.00	NIO C
7620.60	70.105	270.474	7376.00	FORT HAYS
7689.93	76.344	270.368	7396.00	CODELL