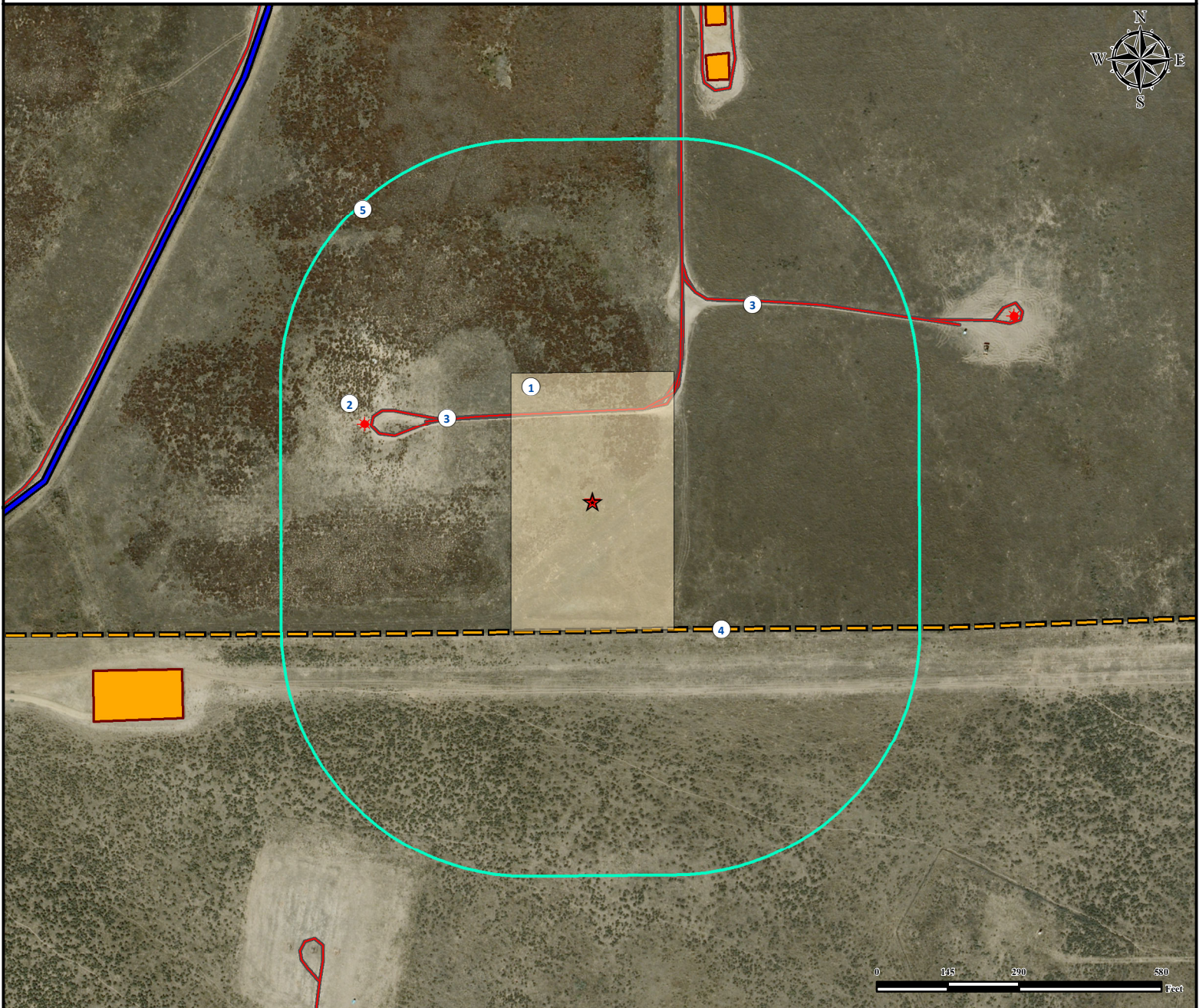


# Facility Location Drawing

## MILLER 3N-24HZ FACILITY

**SE¼ SW¼ SECTION 24, TOWNSHIP 3 NORTH, RANGE 66 WEST OF THE 6TH PRINCIPAL MERIDIAN**



1. Proposed MILLER 3N-24HZ FACILITY.
2. Existing Well HSR-SCHRABERG #14-24 is ±489' NW.
3. Private Roads are ±185' N and ±473' NE.
4. Fence is ±263' S.
5. 500' Buffer

### Legend

- |                   |                      |                        |
|-------------------|----------------------|------------------------|
| ★ Reference Point | ○ 500' Radius        | ▬ Canal                |
| ★ Existing Well   | ▭ Proposed Facility  | ▬ Private Road         |
|                   | ▭ Facility Enclosure | ▬ Underground Pipeline |

### Reference Location

\*\* All Measurements are Made from  
★ Reference Point \*\*  
**Lat: 40.204306° Long: -104.725920° (NAD83)**  
**Elevation: 5050 Feet**

Surface Use: Rangeland

Nearest Building Unit: >1000' NE

**PFS** Petroleum Field Services  
*Use our resources to find yours!*  
[www.petro-fs.com](http://www.petro-fs.com)  
**(303) 928-7128**

Field Date: 08/22/2012  
 Drafting Date: 03/27/2014  
 Drafter: SMG  
 Revision: 2

*2515' FWL, 291' FSL*  
 Data Sources:  
 - Aerial courtesy of Anadarko Petroleum Corporation (2010)

Prepared for: **Anadarko**  
 Petroleum Corporation  
**KERR-MCGEE OIL & GAS ONSHORE LP**