

FIGURE #1

SCALE: 1" = 100'

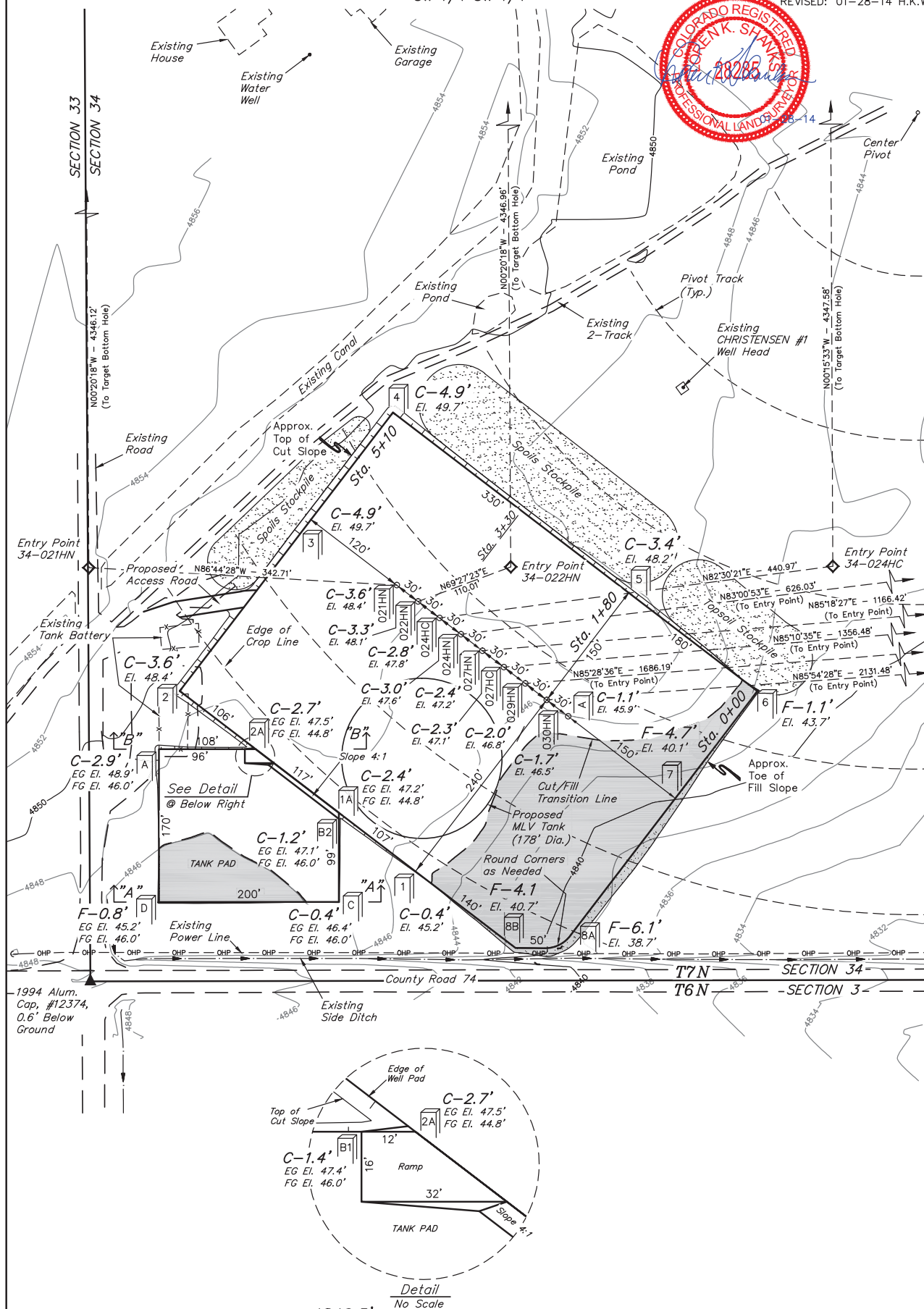
DATE: 09-13-13

DRAWN BY: J.W.

REVISÉ: 09-23-1.

REVISÉ: 10-02-13
REVISÉ: 10-02-13

REVISED: 01-28-14 H.K.W.



Elev. Ungraded Ground At 34-030HN Loc. Stake = 4846.5'
FINISHED GRADE ELEV. AT 34-030HN LOC. STAKE = 4844.8'

UINTAH ENGINEERING & LAND SURVEYING
85 So. 200 East * Vernal, Utah 84078 * (435) 789-1017

1" = 40'
X-Section
Scale
1" = 100'

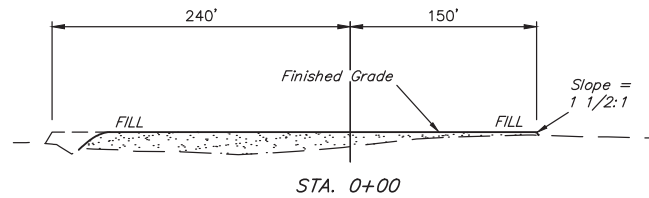
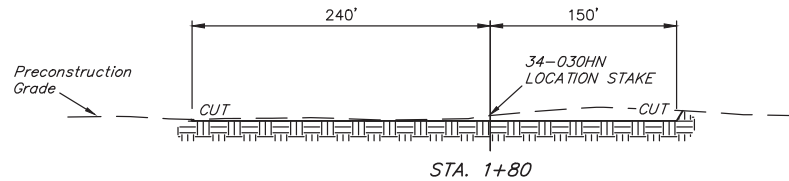
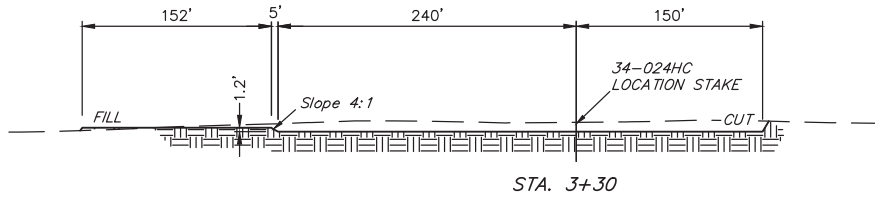
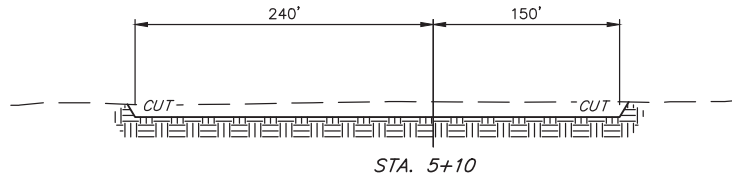
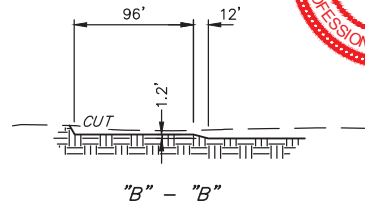
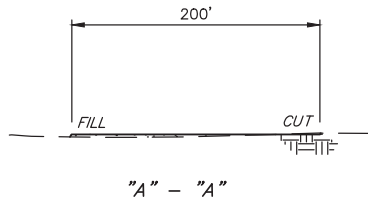
DATE: 09-13-13
DRAWN BY: J.W.
REVISED: 10-02-13
REVISED: 10-22-13

GREAT WESTERN OIL & GAS COMPANY

CONSTRUCTION LAYOUT CROSS SECTIONS FOR

BRUEGMAN SOUTH EG 34-A, 34-030HN, 34-029HN, 34-027HC,
34-027HN, 34-024HN, 34-024HC, 34-022HN & 34-021HN
SECTION 34, T7N, R64W, 6th P.M.
SW 1/4 SW 1/4

FIGURE #2



NOTE:

Topsoil should not be
Stripped Below Finished
Grade on Substructure Area.

* NOTE:

FILL QUANTITY INCLUDES
5% FOR COMPACTION

APPROXIMATE YARDAGES

(6") Topsoil Stripping = 4,430 Cu. Yds.
Remaining Location = 15,600 Cu. Yds.
TOTAL CUT = 20,030 CU. YDS.
FILL = 6,240 CU. YDS.

EXCESS MATERIAL = 13,790 Cu. Yds.
Topsoil = 4,430 Cu. Yds.

EXCESS UNBALANCE = 9,360 Cu. Yds.
(After Interim Rehabilitation)

APPROXIMATE ACREAGE

WELL SITE DISTURBANCE = ± 6.723 ACRES
ACCESS ROAD DISTURBANCE = ± 0.083 ACRES
TOTAL = ± 6.806 ACRES

UINTAH ENGINEERING & LAND SURVEYING
85 So. 200 East * Vernal, Utah 84078 * (435) 789-1017