

**ANADARKO PETROLEUM CORP - EBUS
DO NOT MAIL - PO BOX 4995
THE WOODLANDS, Texas**

Badding 28C-26HZ

Majors 29

Post Job Summary

Cement Surface Casing

Date Prepared: 1/3/2014
Version: 1

Service Supervisor: PICKELL, CHRISTOPHER

Submitted by: TRIER, DEREK

HALLIBURTON

HALLIBURTON

Wellbore Geometry

Job Tubulars					MD		Shoe Joint Length ft
Type	Description	Size in	ID in	Wt lbm/ft	Top ft	Bottom ft	
Casing	9 5/8" Surface Casing	9.63	8.921	36.00	0.00	1,195.00	45.00
Open Hole Section	13 1/2" Open Hole Section		13.500		0.00	1,198.00	0.00

HALLIBURTON

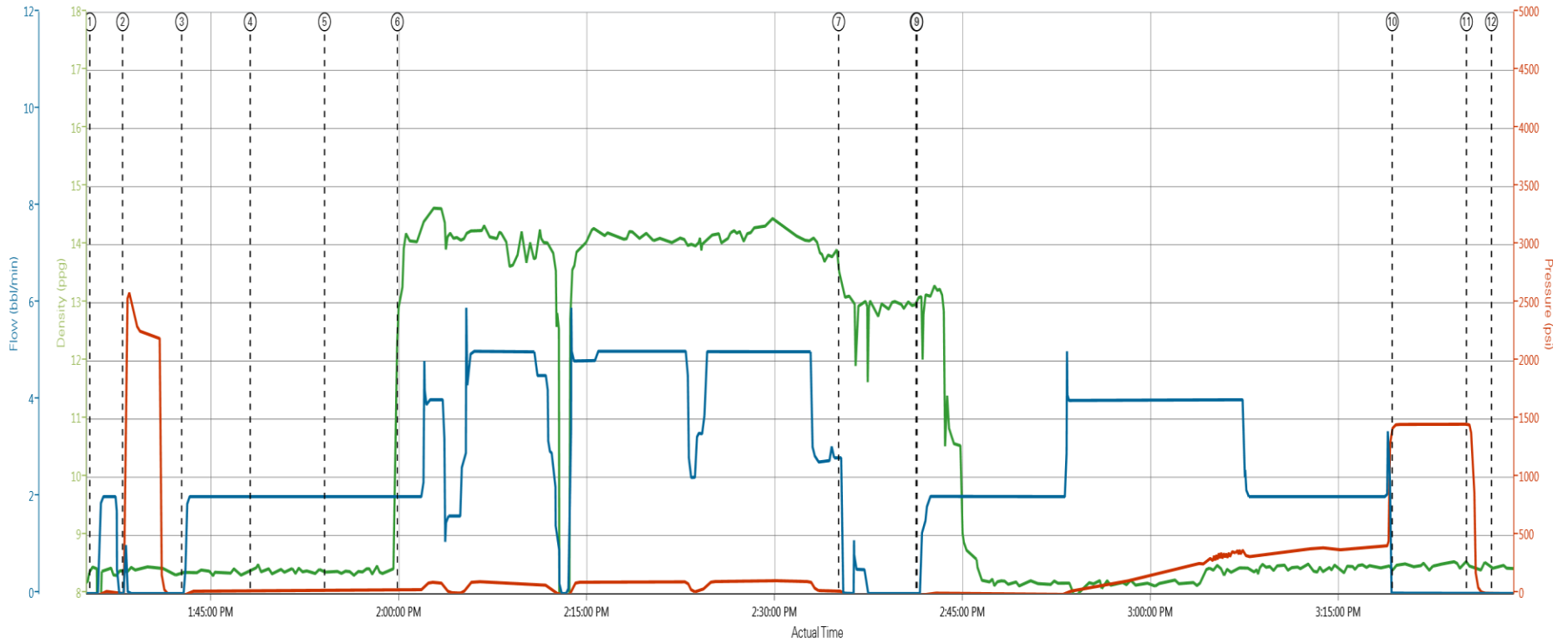
Pumping Schedule

Stage /Plug #	Fluid #	Fluid Type	Fluid Name	Surface Density lbm/gal	Avg Rate bbl/min	Surface Volume	Downhole Volume
1	1	Spacer	Fresh Water Spacer	8.33	2.00	10.0 bbl	10.0 bbl
1	2	Spacer	Mud Flush	8.40	2.00	12.0 bbl	12.0 bbl
1	1	Spacer	Fresh Water Spacer	8.33	2.00	10.0 bbl	10.0 bbl
1	3	Cement Slurry	SwiftCem B2	14.20	4.50	520.0 sacks	520.0 sacks

HALLIBURTON

Data Acquisition

BADDING 28C-26HZ (9 5/8" SURFACE)



DH Density (ppg) PS Pump Press (psi) Comb Pump Rate (bbl/min)

- 1 Start Job 8.45;-16,0
- 2 Test Lines 8.44;-3,0
- 3 Pump Water 8.37;-12,0
- 4 Pump Mudflush 8.39;23,2
- 5 Pump Water 8.4;26,2
- 6 Pump Swiftcem 4.2# 13.08;36,2
- 7 Shutdown 13.42;20,2.8
- 8 Drop Top Plug 13.08;-16,0
- 9 Pump Displacement 13.08;-16,0
- 10 Bump Plug 8.45;1446,0
- 11 Check Floats 8.52;1456,0
- 12 End Job 8.46;-1,0

HALLIBURTON

Service Supervisor Reports

Job Log

Date/Time	Chart #	Activity Code	Pump Rate	Cum Vol	Pump	Pressure (psig)	Comments
12/03/2013 07:30		Call Out					CREW CALLED OUT AT 0730 TO BE ON LOCATION AT 1200. CREW WAS CHRIS PICKELL, ROY NESBITT, WILLIAM JEWELL, THADEUS HARRAH
12/03/2013 09:02		Arrive At Loc					
12/03/2013 09:02		Rig-Up Equipment					HAZARD HUNT PERFORMED. WATER TEST DONE. RIG UP PLANNED AND EXECUTED
12/03/2013 09:02		Pre-Job Safety Meeting					SAFETY MEETING WITH ALL PERSONEL ON LOCATION TO DISCUSS JOB SAFETY AND PROCEDURE
12/03/2013 09:02		Start Job					QUICK LATCH PLUG CONTAINER USED ON JOB
12/03/2013 09:02		Test Lines		3			PRESSURE TEST LINES TO 2500 PSI. CHECK FOR VISIBLE LEAKS AND PRESSURE LOSS
12/03/2013 09:02		Pump Spacer 1	2	10		25	PUMP WATER
12/03/2013 09:02		Pump Spacer 2	2	12		25	PUMP MUDDLUSH
12/03/2013 09:02		Pump Spacer 1	2	10		25	PUMP WATER
12/03/2013 09:02		Pump Cement	4.5	142.6		100	PUMP SWIFTCEM CEMENT 520 SKS 14.2 PPG 1.54 CUFT/SK 7.66 GAL/SK
12/03/2013 09:02		Shutdown					WASH PUMPS AND LINES ON TOP OF THE PLUG
12/03/2013 09:02		Drop Top Plug					PLUG PRELOADED. WITNESSED BY COMPANY MAN
12/03/2013 09:02		Pump Displacement				254	PUMP DISPLACEMENT USING WATER
12/03/2013 09:02		Bump Plug				410	CALCULATED PRESSURE TO LAND WAS
12/03/2013 09:02		Check Floats					
12/03/2013 09:02		End Job					
12/03/2013 09:02		Pre-Rig Down Safety Meeting					SAFETY MEETING HELD FOR RIG DOWN DISCUSSION
12/03/2013 09:02		Rig-Down Equipment					BLOWN DOWN LINES. RIG DOWN ALL EQUIPMENT
12/03/2013 09:02		Depart Location for Service Center or Other Site					LEAVE LOCATION FOR THE YARD
12/03/2013 11:00		Depart from Service Center or Other Site					SAFETY MEETING HELD FOR JOURNEY THEN LEFT THE YARD FOR MAJOR 29

The Road to Excellence Starts with Safety

Sold To #: 300466		Ship To #: 3204390		Quote #:		Sales Order #: 900930500	
Customer: ANADARKO PETROLEUM CORP - EBUS				Customer Rep: Balkenbush, Bob			
Well Name: Badding			Well #: 28C-26HZ		API/UWI #: 05-123-38408		
Field: WATTENBERG		City (SAP): FORT LUPTON		County/Parish: Weld		State: Colorado	
Contractor: Majors			Rig/Platform Name/Num: Majors 29				
Job Purpose: Cement Surface Casing							
Well Type: Development Well				Job Type: Cement Surface Casing			
Sales Person: GREGORY, JON			Srvc Supervisor: PICKELL, CHRISTOPHER			MBU ID Emp #: 396838	

Job Personnel

HES Emp Name	Exp Hrs	Emp #	HES Emp Name	Exp Hrs	Emp #	HES Emp Name	Exp Hrs	Emp #
HARRAH, THADDEUS Gregory	0.0	552592	JEWELL, WILLIAM Uris	0.0	503358	NESBITT, ROY Iverson	0.0	537416
PICKELL, CHRISTOPHER Lee	0.0	396838						

Equipment

HES Unit #	Distance-1 way	HES Unit #	Distance-1 way	HES Unit #	Distance-1 way	HES Unit #	Distance-1 way
11064535	11 mile	11398319	11 mile	11542778	11 mile	11562546C	11 mile
11605597	11 mile						

Job

Job Times

Formation Name	Top	Bottom	Called Out	Date	Time	Time Zone
Formation Depth (MD)			On Location	03 - Dec - 2013	07:30	MST
Form Type		BHST	Job Started	03 - Dec - 2013	00:00	MST
Job depth MD	1198. ft	Job Depth TVD	1198. ft	Job Completed	03 - Dec - 2013	00:00
Water Depth		Wk Ht Above Floor		Departed Loc	03 - Dec - 2013	00:00
Perforation Depth (MD)	<i>From</i>	<i>To</i>				

Well Data

Description	New / Used	Max pressure psig	Size in	ID in	Weight lbm/ft	Thread	Grade	Top MD ft	Bottom MD ft	Top TVD ft	Bottom TVD ft
13 1/2" Open Hole Section				13.5				.	1198.		
9 5/8" Surface Casing	Unknown		9.625	8.921	36.		J-55	.	1195.		

Sales/Rental/3rd Party (HES)

Description	Qty	Qty uom	Depth	Supplier
CMT CASING EQUIPMENT BOM	1	JOB		
MILEAGE FOR CEMENTING CREW,ZI	20	MI		
ZI FUEL SURCHG-CARS/PICKUPS<1 1/2TON	20	MI		
KIT,HALL WELD-A	1	EA		
Description	Qty	Qty uom	Depth	Supplier
CNTRLZR, 9 5/8"x13 3/4',#500-0963-1375	8	EA		
BASKET - CEMENT - 9-5/8 CSG X 12-1/4	1	EA		
PLUG,CMTG, TOP,9 5/8,HWE,8.16 MIN/9.06 MA	1	EA		
COLLAR-STOP-9 5/8"-FRICTION-HINGED	2	EA		

Fluid Data

Stage/Plug #: 1									
Fluid #	Stage Type	Fluid Name	Qty	Qty uom	Mixing Density lbm/gal	Yield ft ³ /sk	Mix Fluid Gal/sk	Rate bbl/min	Total Mix Fluid Gal/sk
1	Fresh Water Spacer		10.00	bbl	8.33			2.0	
2	Mud Flush		12.00	bbl	8.4			2.0	
3.5 lbm/bbl		MUD FLUSH III, 40 LB SACK (101633304)							
42 gal/bbl		MUD FLUSH III - SBM (528788)							
1	Fresh Water Spacer		10.00	bbl	8.33			2.0	
3	SwiftCem B2	SWIFTCEM (TM) SYSTEM (452990)	520.0	sacks	14.2	1.54	7.66	4.5	7.66
7.66 Gal		FRESH WATER							
Calculated Values		Pressures		Volumes					
Displacement	89	Shut In: Instant		Lost Returns		Cement Slurry		Pad	
Top Of Cement		5 Min		Cement Returns		Actual Displacement		89	Treatment
Frac Gradient		15 Min		Spacers		Load and Breakdown		Total Job	
Rates									
Circulating		Mixing		Displacement		Avg. Job			
Cement Left In Pipe		Amount	45 ft	Reason	Shoe Joint				
Frac Ring # 1 @	ID	Frac ring # 2 @	ID	Frac Ring # 3 @	ID	Frac Ring # 4 @	ID		
The Information Stated Herein Is Correct				Customer Representative Signature					

