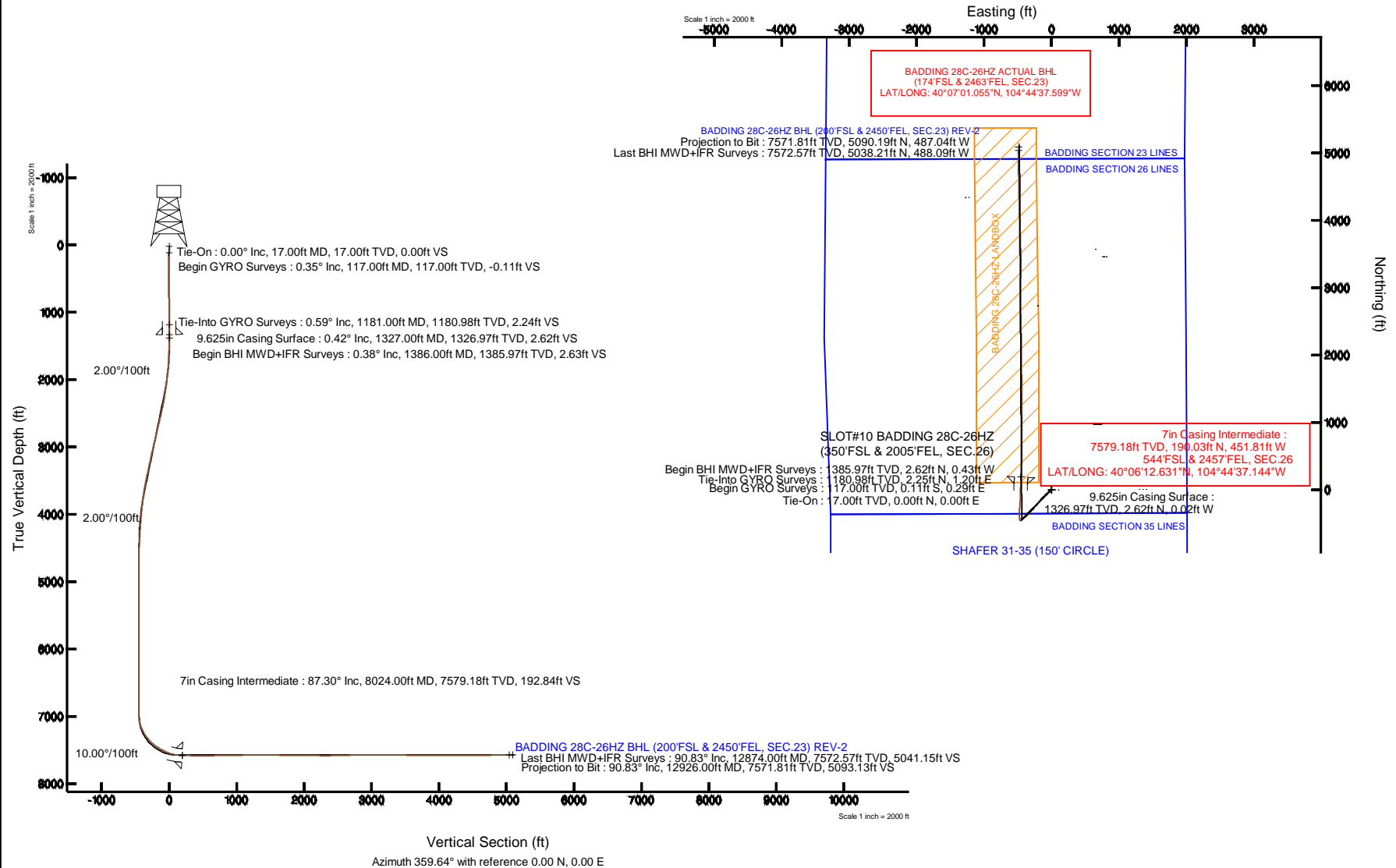


# KERR-MCGEE OIL & GAS ONSHORE LP

Location: COLORADO Slot: SLOT#10 BADDING 28C-26HZ (350'FSL & 2005'FEL, SEC.26)  
 Field: WELD COUNTY (KERR MCGEE) Well: BADDING 28C-26HZ  
 Facility: SEC.26-T2N-R66W Wellbore: BADDING 28C-26HZ PWB

Plot reference wellpath is BADDING 28C-26HZ (REV-B.0) PWP

True vertical depths are referenced to XTREME 8 (17KB) (RKB)	Grid System: NAD83 / Lambert Colorado SP, Northern Zone (501), US feet
Measured depths are referenced to XTREME 8 (17KB) (RKB)	North Reference: True north
XTREME 8 (17KB) (RKB) to Mean Sea Level: 5129 feet	Scale: True distance
Mean Sea Level to Mud line (At Slot: SLOT#10 BADDING 28C-26HZ (350'FSL & 2005'FEL, SEC.26)): 0 feet	Depths are in feet
Coordinates are in feet referenced to Slot	Created by: precain on 01/May/2014



REFERENCE WELLPATH IDENTIFICATION			
Operator	KERR-MCGEE OIL & GAS ONSHORE LP	Slot	SLOT#10 BADDING 28C-26HZ (350'FSL & 2005'FEL, SEC.26)
Area	COLORADO	Well	BADDING 28C-26HZ
Field	WELD COUNTY (KERR MCGEE)	Wellbore	BADDING 28C-26HZ AWB
Facility	SEC.26-T2N-R66W		

REPORT SETUP INFORMATION			
Projection System	NAD83 / Lambert Colorado SP, Northern Zone (501), US feet	Software System	WellArchitect@ 4.0.0
North Reference	True	User	Precaim
Scale	0.99996	Report Generated	01/May/2014 at 13:20
Convergence at slot	n/a	Database/Source file	WellArchitectDB/BADDING_28C-26HZ_AWB.xml

WELLPATH LOCATION						
	Local coordinates		Grid coordinates		Geographic coordinates	
	North[ft]	East[ft]	Easting[US ft]	Northing[US ft]	Latitude	Longitude
Slot Location	-5.81	-1301.00	3212023.08	1281268.67	40°06'10.753"N	104°44'31.330"W
Facility Reference Pt			3213323.93	1281285.67	40°06'10.811"N	104°44'14.587"W
Field Reference Pt			<b>3197771.84</b>	<b>1268891.29</b>	40°04'09.600"N	104°47'36.000"W

WELLPATH DATUM			
Calculation method	Minimum curvature	XTREME 8 (17'KB) (RKB) to Facility Vertical Datum	5129.00ft
Horizontal Reference Pt	Slot	XTREME 8 (17'KB) (RKB) to Mean Sea Level	5129.00ft
Vertical Reference Pt	XTREME 8 (17'KB) (RKB)	XTREME 8 (17'KB) (RKB) to Mud Line at Slot (SLOT#10 BADDING 28C-26HZ (350'FSL & 2005'FEL, SEC.26))	5129.00ft
MD Reference Pt	XTREME 8 (17'KB) (RKB)	Section Origin	N 0.00, E 0.00 ft
Field Vertical Reference	Mean Sea Level	Section Azimuth	359.64°

REFERENCE WELLPATH IDENTIFICATION			
Operator	KERR-MCGEE OIL & GAS ONSHORE LP	Slot	SLOT#10 BADDING 28C-26HZ (350'FSL & 2005'FEL, SEC.26)
Area	COLORADO	Well	BADDING 28C-26HZ
Field	WELD COUNTY (KERR MCGEE)	Wellbore	BADDING 28C-26HZ AWB
Facility	SEC.26-T2N-R66W		

### WELLPATH DATA (152 stations) † = interpolated/extrapolated station

MD [ft]	Inclination [°]	Azimuth [°]	TVD [ft]	Vert Sect [ft]	North [ft]	East [ft]	Latitude	Longitude	DLS [°/100ft]	Comments
0.00†	0.000	110.600	0.00	0.00	0.00	0.00	40°06'10.753"N	104°44'31.330"W	0.00	
17.00	0.000	110.600	17.00	0.00	0.00	0.00	40°06'10.753"N	104°44'31.330"W	0.00	Tie-On
117.00	0.350	110.600	117.00	-0.11	-0.11	0.29	40°06'10.752"N	104°44'31.326"W	0.35	Begin GYRO Surveys
217.00	0.650	110.920	217.00	-0.42	-0.42	1.10	40°06'10.749"N	104°44'31.315"W	0.30	
317.00	0.260	137.240	316.99	-0.80	-0.79	1.79	40°06'10.745"N	104°44'31.307"W	0.43	
417.00	0.230	124.780	416.99	-1.08	-1.07	2.10	40°06'10.743"N	104°44'31.303"W	0.06	
517.00	0.140	72.660	516.99	-1.16	-1.15	2.39	40°06'10.742"N	104°44'31.299"W	0.18	
617.00	0.240	15.060	616.99	-0.92	-0.91	2.56	40°06'10.744"N	104°44'31.297"W	0.20	
717.00	0.340	21.710	716.99	-0.45	-0.43	2.72	40°06'10.749"N	104°44'31.295"W	0.11	
817.00	0.320	7.620	816.99	0.11	0.12	2.87	40°06'10.754"N	104°44'31.293"W	0.08	
917.00	0.440	327.000	916.99	0.71	0.72	2.70	40°06'10.760"N	104°44'31.295"W	0.29	
1017.00	0.420	330.410	1016.98	1.35	1.36	2.31	40°06'10.767"N	104°44'31.300"W	0.03	
1117.00	0.530	304.340	1116.98	1.93	1.94	1.74	40°06'10.772"N	104°44'31.307"W	0.24	
1181.00	0.590	295.270	1180.98	2.24	2.25	1.20	40°06'10.775"N	104°44'31.314"W	0.17	Tie-Into GYRO Surveys
1386.00	0.380	263.450	1385.97	2.63	2.62	-0.43	40°06'10.779"N	104°44'31.335"W	0.16	Begin BHI MWD+IFR Surveys
1481.00	1.910	238.600	1480.95	1.78	1.76	-2.09	40°06'10.771"N	104°44'31.357"W	1.66	
1570.00	3.250	232.870	1569.86	-0.50	-0.53	-5.37	40°06'10.748"N	104°44'31.399"W	1.53	
1662.00	4.480	233.210	1661.64	-4.20	-4.26	-10.33	40°06'10.711"N	104°44'31.463"W	1.34	
1754.00	6.040	233.340	1753.25	-9.20	-9.30	-17.09	40°06'10.661"N	104°44'31.550"W	1.70	
1845.00	7.530	225.800	1843.62	-16.16	-16.32	-25.20	40°06'10.592"N	104°44'31.654"W	1.90	
1936.00	9.080	225.470	1933.66	-25.29	-25.51	-34.60	40°06'10.501"N	104°44'31.775"W	1.70	
2027.00	10.380	227.250	2023.35	-35.83	-36.11	-45.74	40°06'10.396"N	104°44'31.918"W	1.47	
2119.00	11.630	228.120	2113.65	-47.56	-47.93	-58.73	40°06'10.280"N	104°44'32.085"W	1.37	
2211.00	13.390	229.280	2203.47	-60.61	-61.07	-73.71	40°06'10.150"N	104°44'32.278"W	1.93	
2302.00	15.240	231.010	2291.64	-74.90	-75.47	-90.99	40°06'10.007"N	104°44'32.501"W	2.09	
2393.00	16.220	225.850	2379.23	-91.17	-91.85	-109.41	40°06'09.846"N	104°44'32.738"W	1.88	
2485.00	16.800	223.610	2467.44	-109.63	-110.43	-127.80	40°06'09.662"N	104°44'32.974"W	0.94	
2575.00	17.070	219.750	2553.54	-129.09	-130.00	-145.22	40°06'09.469"N	104°44'33.198"W	1.28	
2667.00	17.260	220.690	2641.44	-149.71	-150.73	-162.75	40°06'09.264"N	104°44'33.424"W	0.37	
2759.00	18.090	219.100	2729.10	-171.04	-172.16	-180.66	40°06'09.052"N	104°44'33.654"W	1.04	
2850.00	16.390	219.070	2816.01	-191.86	-193.10	-197.66	40°06'08.845"N	104°44'33.873"W	1.87	
2941.00	16.920	219.630	2903.19	-211.93	-213.26	-214.20	40°06'08.646"N	104°44'34.086"W	0.61	
3032.00	17.270	220.520	2990.17	-232.29	-233.73	-231.42	40°06'08.443"N	104°44'34.308"W	0.48	
3124.00	16.930	221.880	3078.10	-252.53	-254.09	-249.24	40°06'08.242"N	104°44'34.537"W	0.57	
3215.00	16.930	223.940	3165.16	-271.82	-273.49	-267.28	40°06'08.050"N	104°44'34.769"W	0.66	
3307.00	17.250	225.180	3253.10	-290.96	-292.75	-286.25	40°06'07.860"N	104°44'35.013"W	0.53	
3392.00	16.850	223.950	3334.36	-308.61	-310.51	-303.74	40°06'07.685"N	104°44'35.238"W	0.63	
3477.00	16.570	223.260	3415.77	-326.20	-328.20	-320.59	40°06'07.510"N	104°44'35.455"W	0.40	
3562.00	15.540	222.590	3497.46	-343.31	-345.41	-336.61	40°06'07.340"N	104°44'35.661"W	1.23	
3648.00	14.410	224.940	3580.54	-359.27	-361.47	-351.96	40°06'07.181"N	104°44'35.859"W	1.49	
3733.00	13.080	227.140	3663.10	-373.21	-375.50	-366.48	40°06'07.042"N	104°44'36.046"W	1.68	
3818.00	11.500	230.030	3746.15	-385.11	-387.48	-380.03	40°06'06.924"N	104°44'36.220"W	1.99	
3903.00	10.300	230.940	3829.62	-395.26	-397.72	-392.42	40°06'06.823"N	104°44'36.380"W	1.43	
3989.00	9.020	233.690	3914.39	-404.03	-406.55	-403.83	40°06'06.736"N	104°44'36.526"W	1.58	
4074.00	8.260	234.930	3998.43	-411.42	-414.01	-414.19	40°06'06.662"N	104°44'36.660"W	0.92	

REFERENCE WELLPATH IDENTIFICATION				
Operator	KERR-MCGEE OIL & GAS ONSHORE LP		Slot	SLOT#10 BADDING 28C-26HZ (350'FSL & 2005'FEL, SEC.26)
Area	COLORADO		Well	BADDING 28C-26HZ
Field	WELD COUNTY (KERR MCGEE)		Wellbore	BADDING 28C-26HZ AWP
Facility	SEC.26-T2N-R66W			

### WELLPATH DATA (152 stations)

MD [ft]	Inclination [°]	Azimuth [°]	TVD [ft]	Vert Sect [ft]	North [ft]	East [ft]	Latitude	Longitude	DLS [°/100ft]	Comments
4159.00	7.080	235.970	4082.67	-417.80	-420.45	-423.53	40°06'06.598"N	104°44'36.780"W	1.40	
4244.00	6.980	227.480	4167.03	-424.17	-426.87	-431.68	40°06'06.535"N	104°44'36.885"W	1.23	
4330.00	6.180	232.110	4252.46	-430.50	-433.24	-439.18	40°06'06.472"N	104°44'36.981"W	1.12	
4415.00	5.260	228.840	4337.04	-435.83	-438.62	-445.73	40°06'06.419"N	104°44'37.066"W	1.15	
4500.00	4.230	227.250	4421.75	-440.49	-443.31	-450.96	40°06'06.372"N	104°44'37.133"W	1.22	
4585.00	3.460	217.550	4506.56	-444.63	-447.47	-454.83	40°06'06.331"N	104°44'37.183"W	1.18	
4670.00	2.660	209.310	4591.44	-448.37	-451.23	-457.36	40°06'06.294"N	104°44'37.215"W	1.07	
4755.00	1.120	224.650	4676.39	-450.67	-453.54	-458.91	40°06'06.271"N	104°44'37.235"W	1.89	
4841.00	0.480	286.180	4762.38	-451.16	-454.04	-459.84	40°06'06.266"N	104°44'37.247"W	1.15	
4926.00	0.760	58.620	4847.38	-450.77	-453.64	-459.70	40°06'06.270"N	104°44'37.245"W	1.34	
5011.00	0.650	67.830	4932.37	-450.30	-453.17	-458.78	40°06'06.275"N	104°44'37.233"W	0.19	
5181.00	0.340	313.830	5102.37	-449.59	-452.45	-458.25	40°06'06.282"N	104°44'37.227"W	0.50	
5264.00	0.030	90.620	5185.37	-449.42	-452.28	-458.40	40°06'06.284"N	104°44'37.229"W	0.44	
5349.00	0.210	52.620	5270.37	-449.33	-452.19	-458.26	40°06'06.285"N	104°44'37.227"W	0.22	
5520.00	0.080	19.280	5441.37	-449.02	-451.89	-457.97	40°06'06.288"N	104°44'37.223"W	0.09	
5690.00	0.250	306.790	5611.36	-448.69	-451.55	-458.23	40°06'06.291"N	104°44'37.226"W	0.14	
5776.00	0.370	310.520	5697.36	-448.39	-451.26	-458.59	40°06'06.294"N	104°44'37.231"W	0.14	
5861.00	0.380	307.960	5782.36	-448.04	-450.91	-459.02	40°06'06.297"N	104°44'37.237"W	0.02	
5946.00	0.280	314.800	5867.36	-447.72	-450.59	-459.39	40°06'06.300"N	104°44'37.241"W	0.13	
6031.00	0.240	340.990	5952.36	-447.40	-450.27	-459.59	40°06'06.303"N	104°44'37.244"W	0.15	
6117.00	0.030	43.140	6038.36	-447.21	-450.09	-459.64	40°06'06.305"N	104°44'37.245"W	0.26	
6287.00	0.790	141.940	6208.35	-448.11	-450.98	-458.88	40°06'06.297"N	104°44'37.235"W	0.47	
6457.00	0.670	76.820	6378.34	-448.82	-451.67	-457.19	40°06'06.290"N	104°44'37.213"W	0.47	
6713.00	1.390	269.220	6634.32	-448.51	-451.37	-458.84	40°06'06.293"N	104°44'37.234"W	0.80	
6798.00	1.760	266.990	6719.29	-448.57	-451.46	-461.18	40°06'06.292"N	104°44'37.264"W	0.44	
6883.00	1.190	254.650	6804.26	-448.86	-451.76	-463.33	40°06'06.289"N	104°44'37.292"W	0.76	
6999.00	1.930	253.080	6920.22	-449.73	-452.65	-466.36	40°06'06.280"N	104°44'37.331"W	0.64	
7053.00	2.300	290.080	6974.18	-449.61	-452.54	-468.25	40°06'06.281"N	104°44'37.355"W	2.57	
7095.00	5.470	344.750	7016.09	-447.38	-450.32	-469.57	40°06'06.303"N	104°44'37.372"W	10.82	
7138.00	9.600	350.220	7058.71	-441.86	-444.80	-470.72	40°06'06.358"N	104°44'37.387"W	9.74	
7181.00	15.230	349.390	7100.69	-432.76	-435.71	-472.37	40°06'06.447"N	104°44'37.408"W	13.10	
7223.00	19.390	349.400	7140.78	-420.47	-423.43	-474.67	40°06'06.569"N	104°44'37.438"W	9.90	
7266.00	23.450	351.290	7180.80	-404.97	-407.95	-477.28	40°06'06.722"N	104°44'37.472"W	9.58	
7308.00	27.100	354.610	7218.78	-387.16	-390.16	-479.44	40°06'06.898"N	104°44'37.499"W	9.32	
7351.00	30.620	0.770	7256.44	-366.45	-369.45	-480.21	40°06'07.102"N	104°44'37.509"W	10.71	
7394.00	34.480	5.150	7292.68	-343.37	-346.36	-478.97	40°06'07.330"N	104°44'37.493"W	10.51	
7436.00	39.640	5.010	7326.19	-318.18	-321.16	-476.73	40°06'07.579"N	104°44'37.465"W	12.29	
7479.00	44.250	3.710	7358.16	-289.55	-292.51	-474.57	40°06'07.863"N	104°44'37.437"W	10.91	
7521.00	46.910	4.370	7387.56	-259.64	-262.59	-472.45	40°06'08.158"N	104°44'37.409"W	6.43	
7564.00	50.380	4.950	7415.96	-227.49	-230.42	-469.82	40°06'08.476"N	104°44'37.376"W	8.13	
7606.00	54.340	4.670	7441.61	-194.38	-197.29	-467.04	40°06'08.804"N	104°44'37.340"W	9.44	
7649.00	56.810	4.180	7465.92	-159.03	-161.93	-464.30	40°06'09.153"N	104°44'37.305"W	5.82	
7692.00	60.410	3.230	7488.31	-122.42	-125.31	-461.94	40°06'09.515"N	104°44'37.274"W	8.58	
7734.00	63.410	1.860	7508.08	-85.42	-88.29	-460.30	40°06'09.881"N	104°44'37.253"W	7.70	
7777.00	66.690	0.210	7526.22	-46.46	-49.32	-459.60	40°06'10.266"N	104°44'37.244"W	8.38	

REFERENCE WELLPATH IDENTIFICATION			
Operator	KERR-MCGEE OIL & GAS ONSHORE LP	Slot	SLOT#10 BADDING 28C-26HZ (350'FSL & 2005'FEL, SEC.26)
Area	COLORADO	Well	BADDING 28C-26HZ
Field	WELD COUNTY (KERR MCGEE)	Wellbore	BADDING 28C-26HZ AWB
Facility	SEC.26-T2N-R66W		

### WELLPATH DATA (152 stations) † = interpolated/extrapolated station

MD [ft]	Inclination [°]	Azimuth [°]	TVD [ft]	Vert Sect [ft]	North [ft]	East [ft]	Latitude	Longitude	DLS [°/100ft]	Comments
7820.00	69.280	0.310	7542.34	-6.60	-9.46	-459.42	40°06'10.660"N	104°44'37.242"W	6.03	
7862.00	73.670	1.630	7555.68	33.21	30.35	-458.74	40°06'11.053"N	104°44'37.233"W	10.87	
7905.00	78.100	2.220	7566.16	74.86	72.02	-457.34	40°06'11.465"N	104°44'37.215"W	10.39	
7948.00	82.800	2.870	7573.30	117.20	114.37	-455.45	40°06'11.883"N	104°44'37.191"W	11.03	
7990.00	86.300	2.730	7577.28	158.94	156.12	-453.41	40°06'12.296"N	104°44'37.165"W	8.34	
8024.00†	87.301	2.688	7579.18	192.84	190.03	-451.81	40°06'12.631"N	104°44'37.144"W	2.95	7" Casing Point
8079.00	88.920	2.620	7580.99	247.73	244.94	-449.26	40°06'13.174"N	104°44'37.111"W	2.95	
8165.00	88.580	2.590	7582.87	333.60	330.83	-445.35	40°06'14.022"N	104°44'37.061"W	0.40	
8250.00	88.950	1.150	7584.70	418.51	415.76	-442.58	40°06'14.862"N	104°44'37.025"W	1.75	
8378.00	91.170	359.910	7584.57	546.48	543.74	-441.40	40°06'16.127"N	104°44'37.010"W	1.99	
8466.00	91.010	0.090	7582.89	634.47	631.73	-441.40	40°06'16.996"N	104°44'37.010"W	0.27	
8551.00	90.460	0.310	7581.80	719.45	716.72	-441.10	40°06'17.836"N	104°44'37.006"W	0.70	
8637.00	90.360	359.800	7581.19	805.45	802.72	-441.02	40°06'18.686"N	104°44'37.005"W	0.60	
8722.00	90.180	0.140	7580.79	890.45	887.72	-441.06	40°06'19.526"N	104°44'37.006"W	0.45	
8807.00	90.980	359.870	7579.93	975.44	972.71	-441.05	40°06'20.366"N	104°44'37.006"W	0.99	
8892.00	93.140	0.980	7576.87	1060.37	1057.65	-440.42	40°06'21.205"N	104°44'36.998"W	2.86	
8978.00	92.150	359.820	7572.90	1146.27	1143.55	-439.83	40°06'22.054"N	104°44'36.990"W	1.77	
9063.00	90.520	0.190	7570.92	1231.24	1228.53	-439.82	40°06'22.894"N	104°44'36.990"W	1.97	
9148.00	88.850	0.660	7571.39	1316.23	1313.52	-439.19	40°06'23.734"N	104°44'36.982"W	2.04	
9233.00	89.960	359.850	7572.27	1401.22	1398.51	-438.81	40°06'24.573"N	104°44'36.977"W	1.62	
9318.00	90.030	0.010	7572.28	1486.22	1483.51	-438.91	40°06'25.413"N	104°44'36.978"W	0.21	
9404.00	88.550	358.050	7573.35	1572.20	1569.49	-440.37	40°06'26.263"N	104°44'36.997"W	2.86	
9489.00	88.790	358.820	7575.32	1657.16	1654.43	-442.69	40°06'27.102"N	104°44'37.027"W	0.95	
9574.00	89.000	358.970	7576.96	1742.13	1739.40	-444.33	40°06'27.942"N	104°44'37.048"W	0.30	
9659.00	88.860	359.260	7578.55	1827.11	1824.37	-445.64	40°06'28.782"N	104°44'37.065"W	0.38	
9745.00	89.390	359.570	7579.86	1913.10	1910.36	-446.52	40°06'29.632"N	104°44'37.076"W	0.71	
9830.00	89.630	359.140	7580.59	1998.10	1995.35	-447.48	40°06'30.471"N	104°44'37.089"W	0.58	
9915.00	89.780	359.470	7581.02	2083.10	2080.34	-448.51	40°06'31.311"N	104°44'37.102"W	0.43	
10000.00	89.530	359.450	7581.54	2168.09	2165.34	-449.31	40°06'32.151"N	104°44'37.112"W	0.30	
10086.00	89.380	359.310	7582.35	2254.09	2251.33	-450.24	40°06'33.001"N	104°44'37.124"W	0.24	
10171.00	90.330	359.340	7582.57	2339.09	2336.32	-451.24	40°06'33.841"N	104°44'37.137"W	1.12	
10256.00	90.580	358.890	7581.89	2424.08	2421.31	-452.55	40°06'34.681"N	104°44'37.154"W	0.61	
10341.00	91.600	357.880	7580.28	2509.04	2506.26	-454.95	40°06'35.520"N	104°44'37.185"W	1.69	
10427.00	92.270	358.220	7577.37	2594.96	2592.16	-457.87	40°06'36.369"N	104°44'37.223"W	0.87	
10512.00	91.130	359.120	7574.85	2679.91	2677.09	-459.84	40°06'37.209"N	104°44'37.248"W	1.71	
10683.00	89.930	359.680	7573.27	2850.89	2848.07	-461.63	40°06'38.898"N	104°44'37.271"W	0.77	
10768.00	91.200	0.370	7572.43	2935.89	2933.07	-461.60	40°06'39.738"N	104°44'37.271"W	1.70	
10853.00	91.140	1.280	7570.70	3020.85	3018.04	-460.37	40°06'40.578"N	104°44'37.255"W	1.07	
10938.00	89.720	0.350	7570.06	3105.83	3103.03	-459.16	40°06'41.418"N	104°44'37.239"W	2.00	
11024.00	91.070	1.270	7569.47	3191.80	3189.01	-457.95	40°06'42.267"N	104°44'37.224"W	1.90	
11109.00	89.870	1.860	7568.77	3276.75	3273.98	-455.63	40°06'43.107"N	104°44'37.194"W	1.57	
11194.00	88.350	0.420	7570.09	3361.71	3358.94	-453.94	40°06'43.947"N	104°44'37.172"W	2.46	
11280.00	88.180	358.670	7572.69	3447.66	3444.90	-454.62	40°06'44.796"N	104°44'37.181"W	2.04	
11365.00	87.650	358.320	7575.78	3532.59	3529.81	-456.85	40°06'45.635"N	104°44'37.210"W	0.75	
11450.00	88.760	357.980	7578.45	3617.52	3614.73	-459.59	40°06'46.474"N	104°44'37.245"W	1.37	

REFERENCE WELLPATH IDENTIFICATION				
Operator	KERR-MCGEE OIL & GAS ONSHORE LP		Slot	SLOT#10 BADDING 28C-26HZ (350'FSL & 2005'FEL, SEC.26)
Area	COLORADO		Well	BADDING 28C-26HZ
Field	WELD COUNTY (KERR MCGEE)		Wellbore	BADDING 28C-26HZ AWB
Facility	SEC.26-T2N-R66W			

WELLPATH DATA (152 stations)										
MD [ft]	Inclination [°]	Azimuth [°]	TVD [ft]	Vert Sect [ft]	North [ft]	East [ft]	Latitude	Longitude	DLS [°/100ft]	Comments
11535.00	89.630	357.950	7579.64	3702.47	3699.66	-462.61	40°06'47.314"N	104°44'37.284"W	1.02	
11621.00	89.590	358.130	7580.23	3788.44	3785.61	-465.55	40°06'48.163"N	104°44'37.322"W	0.21	
11706.00	90.300	358.330	7580.31	3873.41	3870.57	-468.18	40°06'49.003"N	104°44'37.356"W	0.87	
11791.00	90.240	357.870	7579.91	3958.38	3955.52	-471.00	40°06'49.842"N	104°44'37.392"W	0.55	
11876.00	89.130	358.220	7580.38	4043.34	4040.47	-473.90	40°06'50.682"N	104°44'37.429"W	1.37	
11961.00	90.610	358.720	7580.57	4128.32	4125.44	-476.17	40°06'51.521"N	104°44'37.458"W	1.84	
12046.00	89.900	358.750	7580.19	4213.31	4210.41	-478.04	40°06'52.361"N	104°44'37.483"W	0.84	
12131.00	89.960	358.700	7580.29	4298.30	4295.39	-479.93	40°06'53.201"N	104°44'37.507"W	0.09	
12215.00	90.000	358.350	7580.32	4382.28	4379.36	-482.10	40°06'54.031"N	104°44'37.535"W	0.42	
12300.00	90.980	358.930	7579.60	4467.27	4464.34	-484.11	40°06'54.870"N	104°44'37.561"W	1.34	
12385.00	90.990	358.680	7578.13	4552.24	4549.30	-485.88	40°06'55.710"N	104°44'37.584"W	0.29	
12471.00	91.540	358.640	7576.24	4638.21	4635.26	-487.90	40°06'56.559"N	104°44'37.609"W	0.64	
12556.00	90.000	359.490	7575.09	4723.19	4720.24	-489.28	40°06'57.399"N	104°44'37.627"W	2.07	
12641.00	90.980	359.570	7574.37	4808.19	4805.23	-489.98	40°06'58.239"N	104°44'37.636"W	1.16	
12726.00	90.000	0.350	7573.64	4893.18	4890.23	-490.04	40°06'59.079"N	104°44'37.637"W	1.47	
12874.00	90.830	1.160	7572.57	5041.15	5038.21	-488.09	40°07'00.541"N	104°44'37.612"W	0.78	Last BHI MWD+IFR Surveys
12926.00	90.830	1.160	7571.81	5093.13	5090.19	-487.04	40°07'01.055"N	104°44'37.599"W	0.00	Projection to Bit

HOLE & CASING SECTIONS - Ref Wellbore: BADDING 28C-26HZ AWB Ref Wellpath: BADDING 28C-26HZ AWP									
String/Diameter	Start MD [ft]	End MD [ft]	Interval [ft]	Start TVD [ft]	End TVD [ft]	Start N/S [ft]	Start E/W [ft]	End N/S [ft]	End E/W [ft]
13.5in Open Hole	17.00	1337.00	1320.00	17.00	1336.97	0.00	0.00	2.63	-0.09
9.625in Casing Surface	17.00	1327.00	1310.00	17.00	1326.97	0.00	0.00	2.62	-0.02
8.75in Open Hole	1337.00	8033.00	6696.00	1336.97	7579.58	2.63	-0.09	199.01	-451.39
7in Casing Intermediate	17.00	8024.00	8007.00	17.00	7579.18	0.00	0.00	190.03	-451.81
6.125in Open Hole	8033.00	12926.00	4893.00	7579.58	7571.81	199.01	-451.39	5090.19	-487.04

REFERENCE WELLPATH IDENTIFICATION			
Operator	KERR-MCGEE OIL & GAS ONSHORE LP	Slot	SLOT#10 BADDING 28C-26HZ (350'FSL & 2005'FEL, SEC.26)
Area	COLORADO	Well	BADDING 28C-26HZ
Field	WELD COUNTY (KERR MCGEE)	Wellbore	BADDING 28C-26HZ AWB
Facility	SEC.26-T2N-R66W		

TARGETS									
Name	MD [ft]	TVD [ft]	North [ft]	East [ft]	Grid East [US ft]	Grid North [US ft]	Latitude	Longitude	Shape
BADDING SECTION 26 LINES		-3.00	5.88	1301.08	3213324.01	1281285.67	40°06'10.811"N	104°44'14.586"W	polygon
BADDING SECTION 35 LINES		-3.00	5.88	1301.08	3213324.01	1281285.67	40°06'10.811"N	104°44'14.586"W	polygon
BADDING SECTION 23 LINES		0.00	0.00	0.00	3212023.08	1281268.67	40°06'10.753"N	104°44'31.330"W	polygon
SHAFER USX W 35-6 (150' CIRCLE)		7331.00	-2116.04	-1645.66	3210395.64	1279138.73	40°05'49.842"N	104°44'52.506"W	circle
SHAFER 31-35 (150' CIRCLE)		7361.00	-825.80	-306.49	3211723.68	1280440.32	40°06'02.593"N	104°44'35.274"W	circle
SHAFER USX W 35-7 (150' CIRCLE)		7400.00	-2101.81	210.64	3212251.68	1279168.83	40°05'49.983"N	104°44'28.619"W	circle
SHAFER 12-35 (150' CIRCLE)		7409.00	-2202.64	-2707.22	3209334.90	1279043.06	40°05'48.985"N	104°45'06.166"W	circle
BADDING USX W 35-3 (150' CIRCLE)		7418.00	-1161.22	-1425.96	3210607.16	1280095.35	40°05'59.277"N	104°44'49.679"W	circle
BADDING USX W 35-8 (150' CIRCLE)		7421.00	-2154.63	1267.20	3213308.59	1279125.04	40°05'49.460"N	104°44'15.023"W	circle
BADDING USX W 35-1 (150' CIRCLE)		7432.00	-1091.57	1250.47	3213282.79	1280187.87	40°05'59.966"N	104°44'15.238"W	circle
BADDING 28C-26HZ BHL (200'FSL & 2450'FEL, SEC.23) REV-2		7574.00	5116.14	-476.05	3211503.34	1286380.34	40°07'01.312"N	104°44'37.457"W	point
BADDING 28C-26HZ BHL ON PLAT (200'FSL & 2250'FEL, SEC.23) REV-1		7574.00	5116.14	-276.05	3211703.33	1286382.05	<b>40°07'01.312"N</b>	<b>104°44'34.883"W</b>	point
BADDING 28C-26HZ LANDBOX		7574.00	0.00	0.00	3212023.08	1281268.67	40°06'10.753"N	104°44'31.330"W	polygon

WELLPATH COMPOSITION - Ref Wellbore: BADDING 28C-26HZ AWB Ref Wellpath: BADDING 28C-26HZ AWP				
Start MD [ft]	End MD [ft]	Positional Uncertainty Model	Log Name/Comment	Wellbore
17.00	1181.00	Generic gyro - continuous (Standard)	MS ENERGY SERVICES GYRO SURVEYS <117-1181>	BADDING 28C-26HZ AWB
1181.00	7990.00	NaviTrak (MAGCORR,IFR)	BHI MWD+IFR SURVEYS 8 3/4" HOLE <1386-7990>	BADDING 28C-26HZ AWB
7990.00	12874.00	NaviTrak (MAGCORR,IFR)	BHI MWD+IFR SURVEYS 6 1/8" HOLE <8079-12874>	BADDING 28C-26HZ AWB
12874.00	12926.00	Blind Drilling (std)	Projection to bit	BADDING 28C-26HZ AWB

# Actual Wellpath Report

BADDING 28C-26HZ AWP

Page 7 of 7

## REFERENCE WELLPATH IDENTIFICATION

Operator	KERR-MCGEE OIL & GAS ONSHORE LP	Slot	SLOT#10 BADDING 28C-26HZ (350'FSL & 2005'FEL, SEC.26)
Area	COLORADO	Well	BADDING 28C-26HZ
Field	WELD COUNTY (KERR MCGEE)	Wellbore	BADDING 28C-26HZ AWB
Facility	SEC.26-T2N-R66W		

## WELLPATH COMMENTS

MD [ft]	Inclination [°]	Azimuth [°]	TVD [ft]	Comment
17.00	0.000	110.600	17.00	Tie-On
117.00	0.350	110.600	117.00	Begin GYRO Surveys
1181.00	0.590	295.270	1180.98	Tie-Into GYRO Surveys
1386.00	0.380	263.450	1385.97	Begin BHI MWD+IFR Surveys
8024.00	87.301	2.688	7579.18	7" Casing Point
12874.00	90.830	1.160	7572.57	Last BHI MWD+IFR Surveys
12926.00	90.830	1.160	7571.81	Projection to Bit