

**ANADARKO PETROLEUM CORP - EBUS  
DO NOT MAIL - PO BOX 4995  
THE WOODLANDS, Texas**

Grenemyer 36C-3HZ

**Majors 42**

## **Post Job Summary** **Cement Surface Casing**

Date Prepared: 1/23/2013  
Version: 1

Service Supervisor: OTERI, VAUGHN

Submitted by: TRIER, DEREK

**HALLIBURTON**

# HALLIBURTON

## Wellbore Geometry

---

Job Tubulars					MD		Shoe Joint Length ft
Type	Description	Size in	ID in	Wt lbm/ft	Top ft	Bottom ft	
Casing	9 5/8" Surface Casing	9.63	8.921	36.00	0.00	1,094.00	45.00
Open Hole Section	13 1/2" Open Hole Section		13.500		0.00	1,094.00	0.00

# HALLIBURTON

## ***Pumping Schedule***

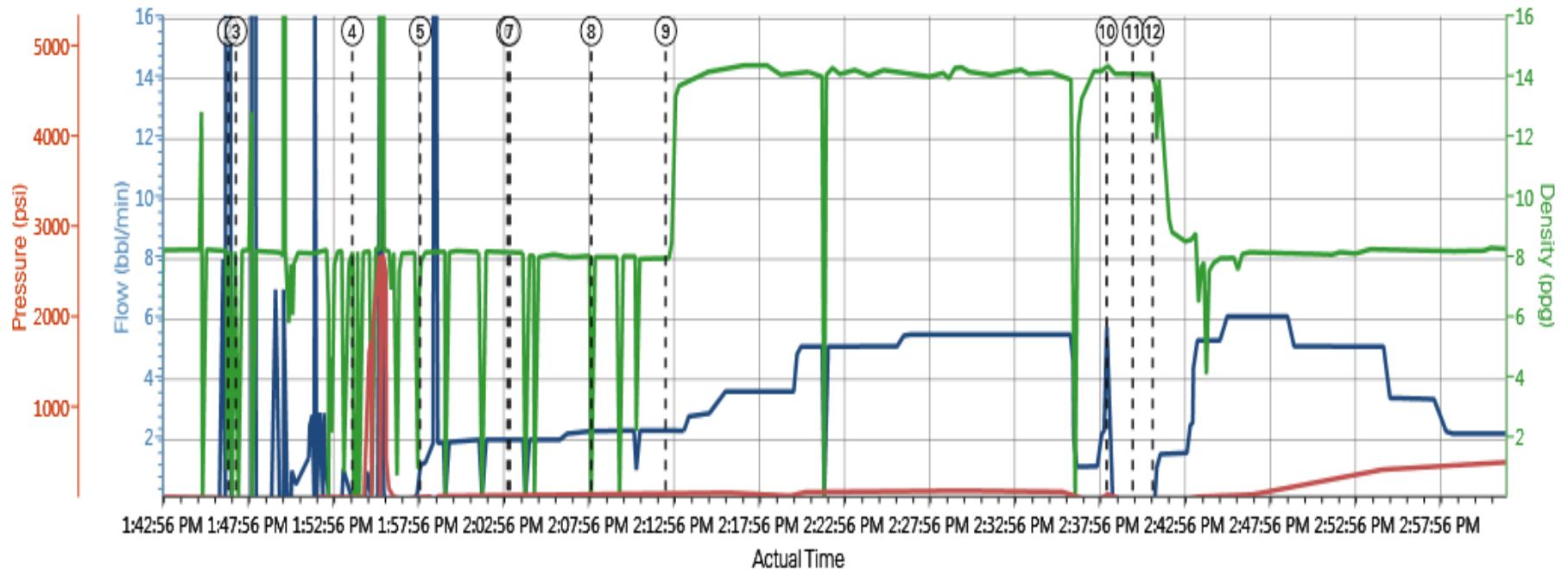
---

Stage /Plug #	Fluid #	Fluid Type	Fluid Name	Surface Density lbm/gal	Avg Rate bbl/min	Surface Volume	Downhole Volume
1	1	Spacer	Fresh Water Spacer	8.33	2.00	10.0 bbl	10.0 bbl
1	2	Spacer	Mud Flush	8.40	2.50	12.0 bbl	12.0 bbl
1	1	Spacer	Fresh Water Spacer	8.33	2.50	10.0 bbl	10.0 bbl
1	3	Cement Slurry	SwiftCem B2	14.20	5.00	408.0 sacks	408.0 sacks

# HALLIBURTON

## Data Acquisition

### Custom Results



① Start Job 0;8.35;16	④ Test Lines 0;8.28;23	⑦ Pump Spacer 2;8.2;45	⑩ Shutdown 0;14.18;61	⑬ Bump Plug 0;8.29;1126
② Drop Ball 0.12;0;0	⑤ Pump Spacer 1 1.2;8.25;26	⑧ Pump Spacer 1 2.3;8.05;57	⑪ Drop Top Plug 0;14.25;1	⑭ Other 0;8.24;139
③ Start Job 0;8.27;7	⑥ End Job 2;8.23;46	⑨ Pump Cement 2.3;8.02;63	⑫ Pump Displacement 1.1;12.89;4	⑮ End Job 0;8.26;9

# HALLIBURTON

## Service Supervisor Reports

### Job Log

Date/Time	Chart #	Activity Code	Pump Rate	Cum Vol	Pump		Pressure (psig)		Comments
12/11/2013 08:00		Call Out							CALL OUT FROM ARS OFFICE (JESS)
12/11/2013 11:30		Depart from Service Center or Other Site							CREW LEFT YARD
12/11/2013 12:00		Arrive at Location from Service Center							ARRIVE ON LOCATION MET WITH COMPANY REP (BOB) DISCUSS JOB PROCESS AND ANY CONCERNS . WHEN WE ARRIVED THEY HAD A FULL RACK OF CASING TO RUN STILL
12/11/2013 13:00		Casing on Bottom							ADVISED CASING ON BOTTOM AND WAS SAFE TO ENTER BUFFER ZONES
12/11/2013 13:47		Start Job							PRELOADED PLUG INTO CEMENT HEAD WITNESSED BY COMPANY REP (BOB)
12/11/2013 13:54		Test Lines					2585.0		PRESSURE TESTED PUMPES AND LINES FOUND NO LEAKS AND PRESSURE HELD GOOD
12/11/2013 13:58		Pump Spacer 1	2	10			44.0		PUMPED FRESH WATER FROM FRAC TANK
12/11/2013 14:03		Pump Spacer 2	2.5	12			46.0		MIXED MUD FLUSH WITH FRESH WATER FROM FRAC TANK
12/11/2013 14:08		Pump Spacer 1	2.5	10			57.0		PUMPED FRESH WATER FROM FRAC TANK
12/11/2013 14:13		Pump Cement	5	111			87.0		MIXED 14.2PPG SWIFTCEM WITH FRESH WATER FROM FRAC TANK
12/11/2013 14:38		Shutdown							
12/11/2013 14:40		Drop Top Plug							RELEASED PLUG WITNESSED BY COMPANY REP (BOB)
12/11/2013 14:41		Pump Displacement	6	80			130.0		PUMPED FRESH WATER FROM FRAC TANK
12/11/2013 15:03		Bump Plug	2				333.0		BUMPED PLUG 500PSI OVER FINAL PUMP PRESSURE
12/11/2013 15:06		Check Floats		0.5			1186.0		RELEASED PRESSURE BACK TO PUMP TRUCK TO CHECK FLOATS, FLOATS HELD GOOD
12/11/2013 15:07		End Job							

## The Road to Excellence Starts with Safety

Sold To #: 300466	Ship To #: 3205025	Quote #:	Sales Order #: 900961831
Customer: ANADARKO PETROLEUM CORP - EBUS		Customer Rep: Porter, Bob	
Well Name: Grenemyer		Well #: 36C-3HZ	API/UWI #: 05-123-38417
Field: WATTENBERG	City (SAP): IONE	County/Parish: Weld	State: Colorado
Contractor: Majors		Rig/Platform Name/Num: Majors 42	
Job Purpose: Cement Surface Casing			
Well Type: Development Well		Job Type: Cement Surface Casing	
Sales Person: PLIENESS, RYAN		Srvc Supervisor: OTERI, VAUGHN	MBU ID Emp #: 443828

## Job Personnel

HES Emp Name	Exp Hrs	Emp #	HES Emp Name	Exp Hrs	Emp #	HES Emp Name	Exp Hrs	Emp #
ACEVEDO, ROBERTO Carlos	0.0	551312	MULLER, MICHEL B	0.0	529830	OTERI, VAUGHN Steeves	0.0	443828
sausesoto, jimmy	0.0	777779						

## Equipment

HES Unit #	Distance-1 way	HES Unit #	Distance-1 way	HES Unit #	Distance-1 way	HES Unit #	Distance-1 way
10248053C	10 mile	10829457	10 mile	11362287C	10 mile	11808819	10 mile
11923776C	10 mile						

## Job

## Job Times

Formation Name				Date	Time	Time Zone
Formation Depth (MD)	Top	Bottom		Called Out	11 - Dec - 2013	08:00 MST
Form Type	BHST			On Location	11 - Dec - 2013	12:00 MST
Job depth MD	1094. ft	Job Depth TVD	1094. ft	Job Started	11 - Dec - 2013	13:47 MST
Water Depth		Wk Ht Above Floor	4. ft	Job Completed	11 - Dec - 2013	15:07 MST
Perforation Depth (MD)	From	To		Departed Loc	11 - Dec - 2013	16:00 MST

## Well Data

Description	New / Used	Max pressure psig	Size in	ID in	Weight lbm/ft	Thread	Grade	Top MD ft	Bottom MD ft	Top TVD ft	Bottom TVD ft
13 1/2" Open Hole Section				13.5				.	1094.		
9 5/8" Surface Casing	Unknown		9.625	8.921	36.		J-55	.	1094.		

## Fluid Data

## Stage/Plug #: 1

Fluid #	Stage Type	Fluid Name	Qty	Qty uom	Mixing Density lbm/gal	Yield ft <sup>3</sup> /sk	Mix Fluid Gal/sk	Rate bbl/min	Total Mix Fluid Gal/sk
---------	------------	------------	-----	---------	------------------------	---------------------------	------------------	--------------	------------------------

1	Fresh Water Spacer		10.00	bbl	8.33			2.0	
2	Mud Flush		12.00	bbl	8.4			2.5	
3.5 lbm/bbl		MUD FLUSH III, 40 LB SACK (101633304)							
42 gal/bbl		MUD FLUSH III - SBM (528788)							
1	Fresh Water Spacer		10.00	bbl	8.33			2.0	
3	SwiftCem B2	SWIFTCEN (TM) SYSTEM (452990)	408.0	sacks	14.2	1.54	7.66	5.0	7.66
7.66 Gal		FRESH WATER							
<b>Calculated Values</b>		<b>Pressures</b>		<b>Volumes</b>					
Displacement		Shut In: Instant		Lost Returns		Cement Slurry		Pad	
Top Of Cement		5 Min		Cement Returns		Actual Displacement		80	Treatment
Frac Gradient		15 Min		Spacers		Load and Breakdown		Total Job	
<b>Rates</b>									
Circulating		Mixing		Displacement		Avg. Job			
Cement Left In Pipe		Amount	45 ft	Reason	Shoe Joint				
Frac Ring # 1 @	ID	Frac ring # 2 @	ID	Frac Ring # 3 @	ID	Frac Ring # 4 @	ID		
The Information Stated Herein Is Correct				Customer Representative Signature					

