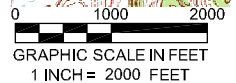
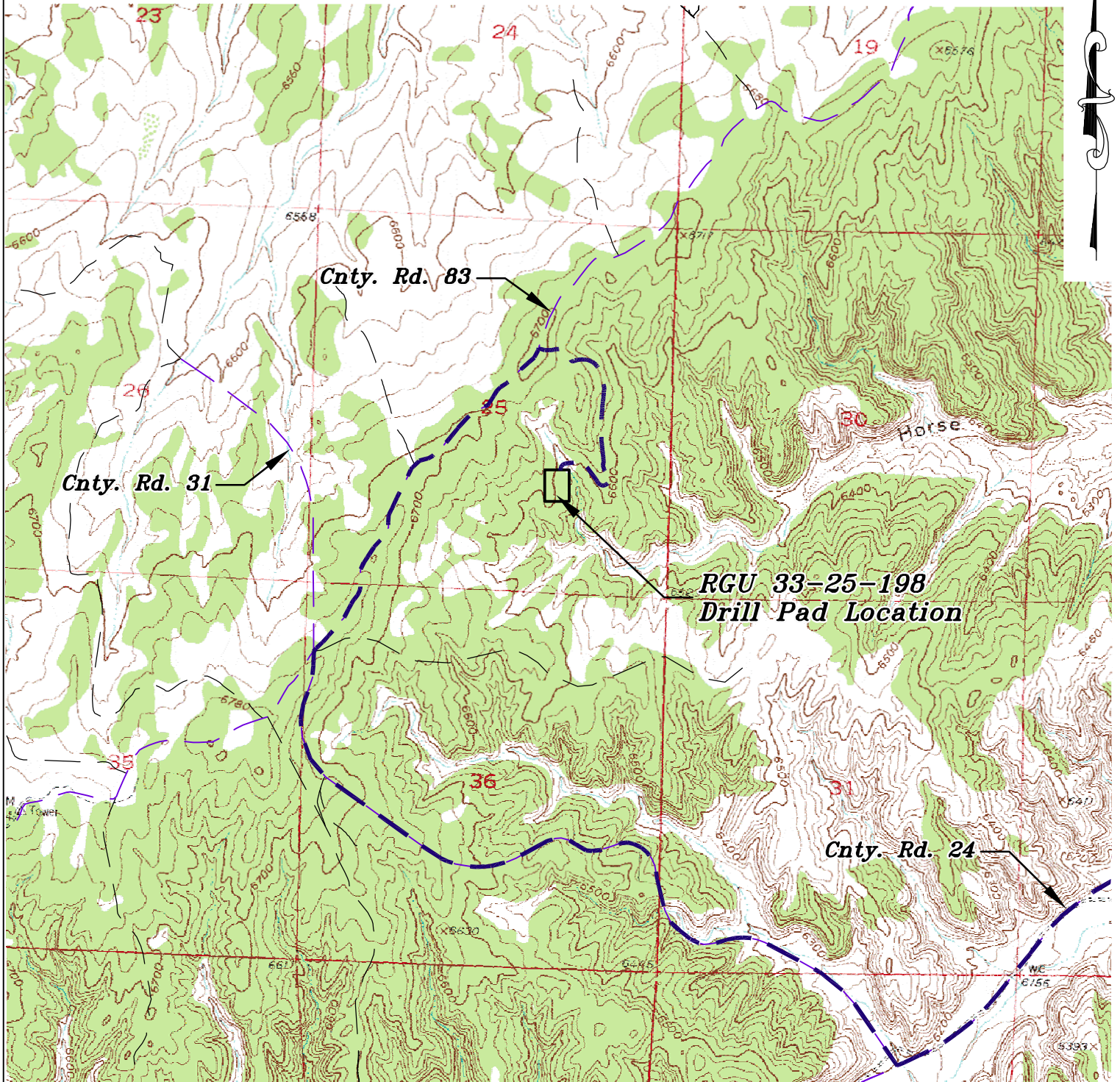


Section 25  
T. 1 S., R. 98 W.  
6th. P.M.



**ACCESS DESCRIPTION:**

FROM THE INTERSECTION OF STATE HIGHWAY 64 AND RIO BLANCO COUNTY ROAD 5 PROCEED SOUTHERLY ALONG COUNTY ROAD 5  $\pm 14.5$  MILES TO THE INTERSECTION WITH COUNTY ROAD 24, PROCEED RIGHT IN A WESTERLY DIRECTION ALONG COUNTY ROAD 24  $\pm 1.8$  MILES TO THE INTERSECTION WITH COUNTY ROAD 31, PROCEED RIGHT IN A NORTHWESTERLY DIRECTION  $\pm 1.5$  MILES TO THE INTERSECTION WITH COUNTY ROAD 83, PROCEED RIGHT IN A NORTHERLY DIRECTION ALONG COUNTY ROAD 83  $\pm 1.1$  MILES TO AN INTERSECTION WITH A DIRT/GRAVEL ROAD, PROCEED RIGHT IN A SOUTHERLY DIRECTION  $\pm 0.7$  MILES TO THE RGU 33-25-198 DRILL PAD LOCATION, AS SHOWN HEREON.

REVISED: 11/7/13

136 East Third Street  
Rifle, Colorado 81650  
Ph. (970) 625-2720  
Fax (970) 625-2773



SCALE:	1" = 2000'
DATE:	9/12/13
PLAT:	5 of 7
PROJECT:	Highlands
DFT:	cws

**Construction Plan Prepared for:**  
**WPXENERGY** WPX Energy Rocky Mountain, LLC

*RGU 33-25-198 Drill Pad - Plat 5  
ACCESS ROAD & TOPO MAP*