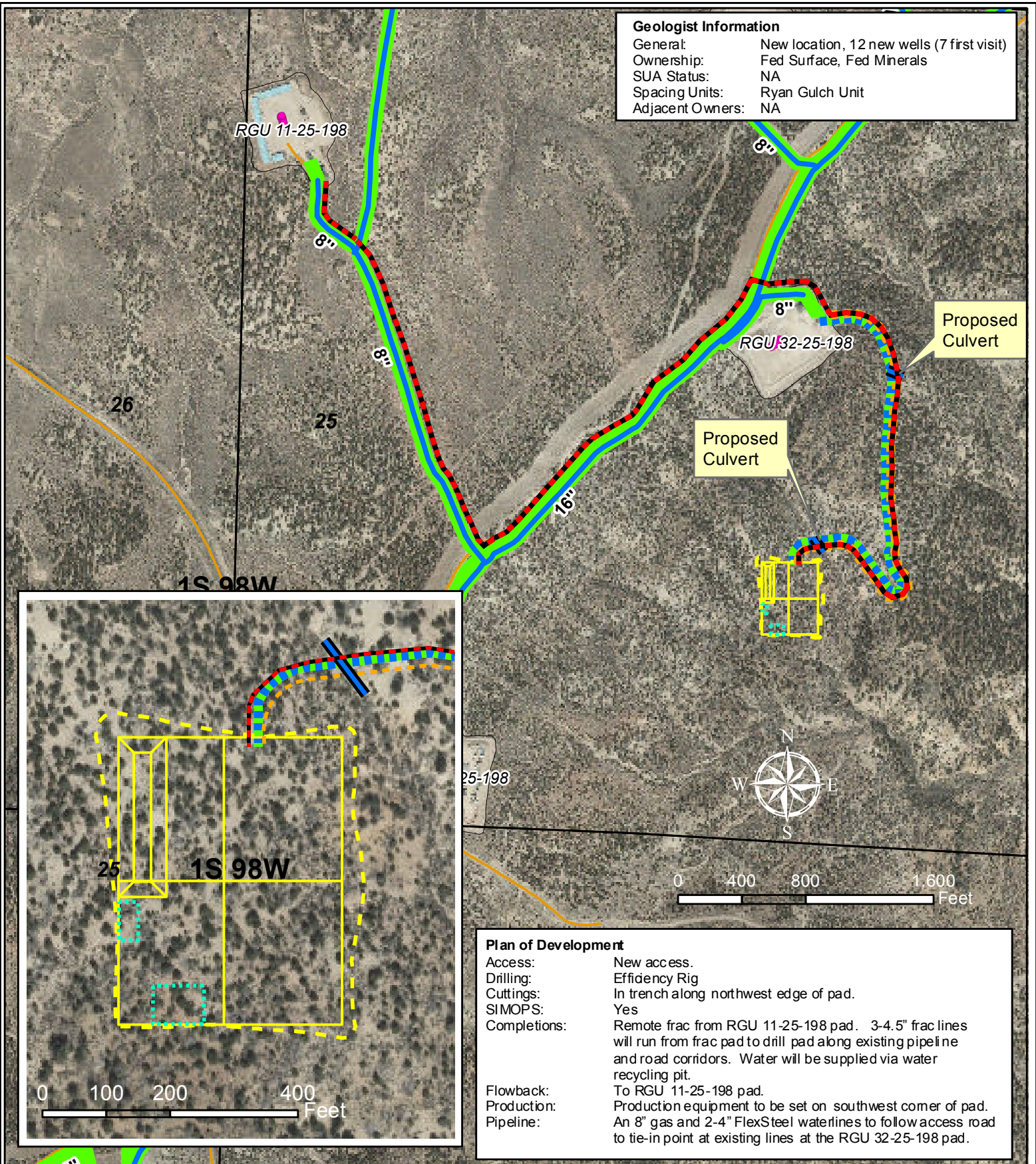


Geologist Information

General: New location, 12 new wells (7 first visit)
Ownership: Fed Surface, Fed Minerals
SUA Status: NA
Spacing Units: Ryan Gulch Unit
Adjacent Owners: NA



Plan of Development

Access: New access.
Drilling: Efficiency Rig
Cuttings: In trench along northwest edge of pad.
SIMOPS: Yes
Completions: Remote frac from RGU 11-25-198 pad. 3-4.5" frac lines will run from frac pad to drill pad along existing pipeline and road corridors. Water will be supplied via water recycling pit.
Flowback: To RGU 11-25-198 pad.
Production: Production equipment to be set on southwest corner of pad.
Pipeline: An 8" gas and 2-4" FlexSteel waterlines to follow access road to tie-in point at existing lines at the RGU 32-25-198 pad.

Legend

- Existing Gas Well
- Frac Line (3-4.5", Temp. Surface)
- Proposed Gas Line
- Proposed Production Equipment Area
- Proposed Daylight Line
- Proposed Pad or Pit
- Proposed Access Road
- Proposed Culvert (18" CMP)
- Dual 4 in. FlexSteel Waterline
- Proposed Water/Gas Line Route
- Existing Gas Pipeline - Williams Midstream
- Existing Road
- Existing Pad

WPX Energy Rocky Mountain, LLC

RGU 33-25-198 Pad
T1S R98W, Section 25

October 23, 2013

