



E-logs

MWD GR 1100' - 16938'

Casing

9 5/8" Surface Casing set @ 1084' MD  
7" Intermediate Casing set @ 7568' MD  
4 1/2" Production Liner hung 03/13/2014, landed @ 16928' MD

Comments

1) Drilling Contractor: Xtreme Drilling, Rig #22  
Toolpusher: Tyler Humphrey  
2) Company Man: Scott Hancock, Butch Beddingfield  
3) Mud Company : AES  
Engineer: Sam Evans & Mike Cook  
4) Directional Drilling: Sperry/Halliburton  
Drillers: Jake Suitter &  
MWD: XX & Clay Wass  
5) Gas Equipment: Mudlogging Systems Inc.  
by Terra Services  
Yellow Box # ML-577 & Ratcliff Agitator  
6) Wellsite Geology: Goolsby Brothers & Associates  
Geologists: Jack Rogers & Alex Caruana

ROCK TYPES

Anhy Bent

Brec Cht

Clyst Coal

Oil sat. Congl

Dol Gyp

Lmst Mrlst

Salt Shale

Shcol Shgy

Ss Sltst

Ss Chalk

Carb sh Sltly sh

ACCESSORIES

MINERAL

Anhy

Arggrn

Arg

Bent

Bit

Brecfrag

Calc

Carb

Chtdk

Chtlt

Dol

Feldspar

Ferrpel

Ferr

Glau

Gyp

Hvymin

Kaol

Marl

Minxl

Nodule

Phos

Pyr

Salt

Sandy

Silt

Sil

Sulphur

Tuff

FOSSIL

Algae

Amph

Belm

Bioclst

Brach

Bryozoa

Cephal

Coral

Crin

Echin

Fish

Foram

Fossil

Gastro

Oolite

Ostra

Pelec

Pellet

Pisolite

Plant

Strom

STRINGER

Chlkstg

Anhy

Arg

Bent

Coal

Dol

Gyp

Ls

Mrst

Sltstrg

Ssstrg

TEXTURE

Boundst

Chalky

Cryxln

Earthy

Finexln

Grainst

Lithogr

Microxln

Mudst

Packst

Wackest

OIL SHOWS

- Even
- Spotted



Ques



Dead



Vspotty



near even

POROSITY TYPE

- Earthy
- Fenest



Fracture



Inter



Moldic

OTHER SYMBOLS



Organic



Pinpoint



Vuggy

ROUNDING

- Rounded
- Subrnd



Subang



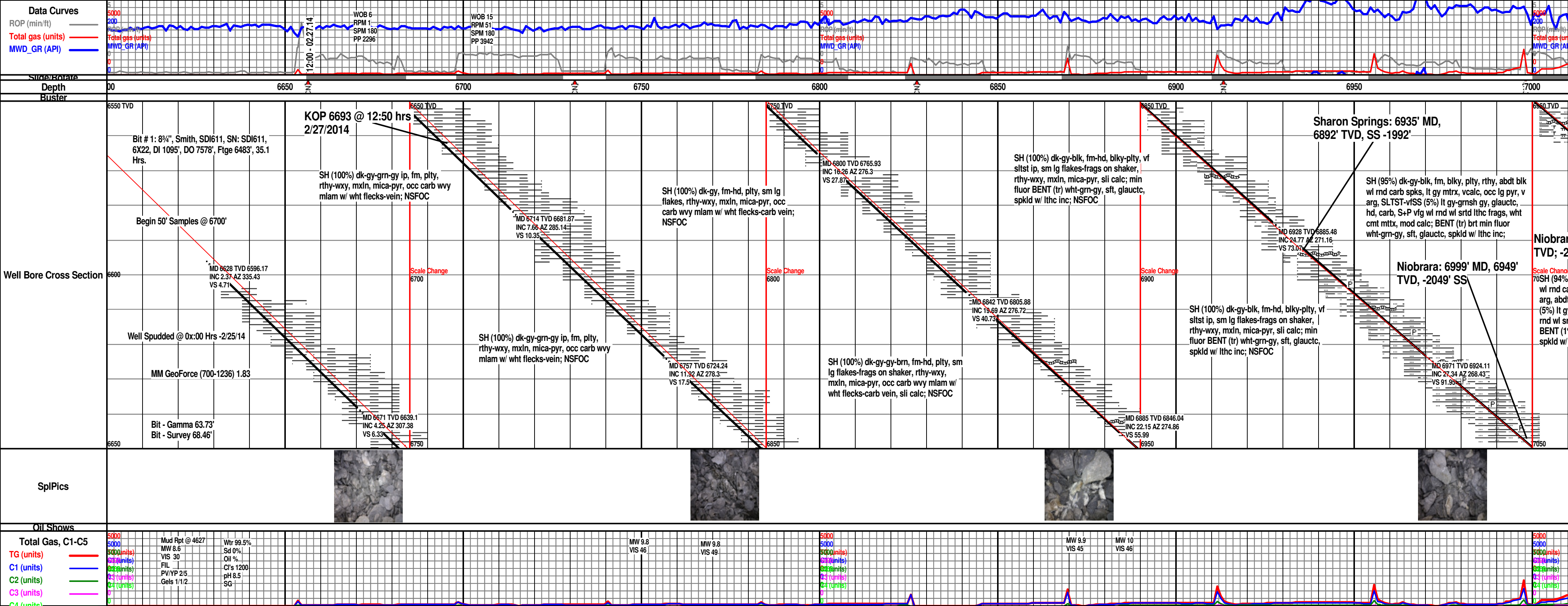
Angular

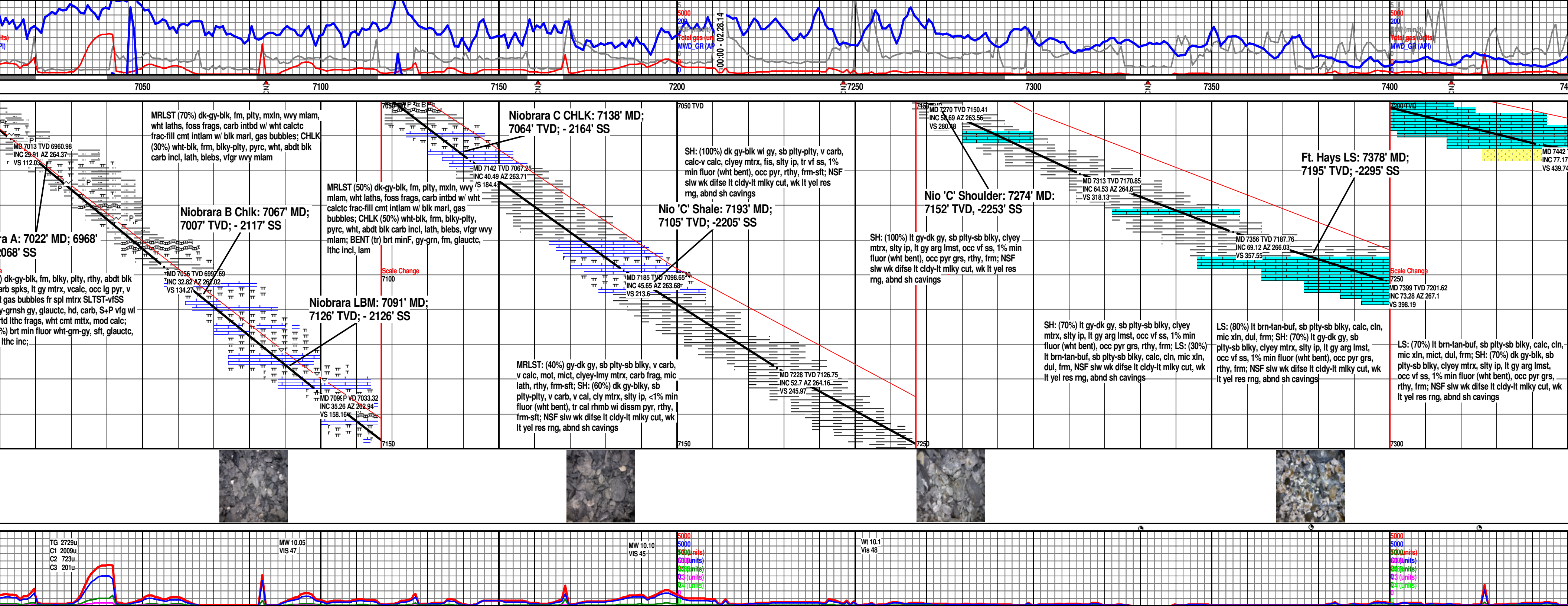
SORTING

- Well
- Moderate

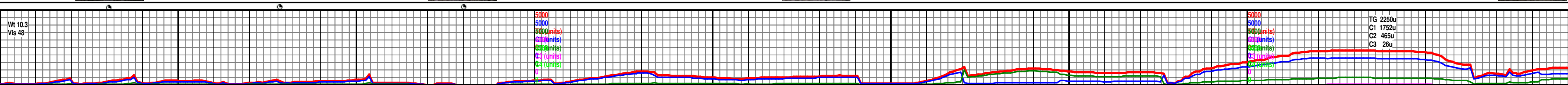
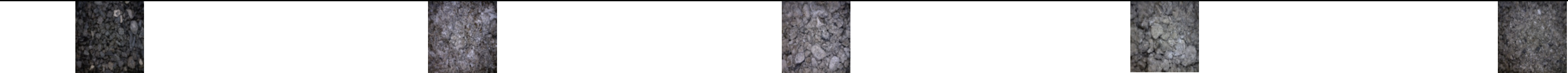
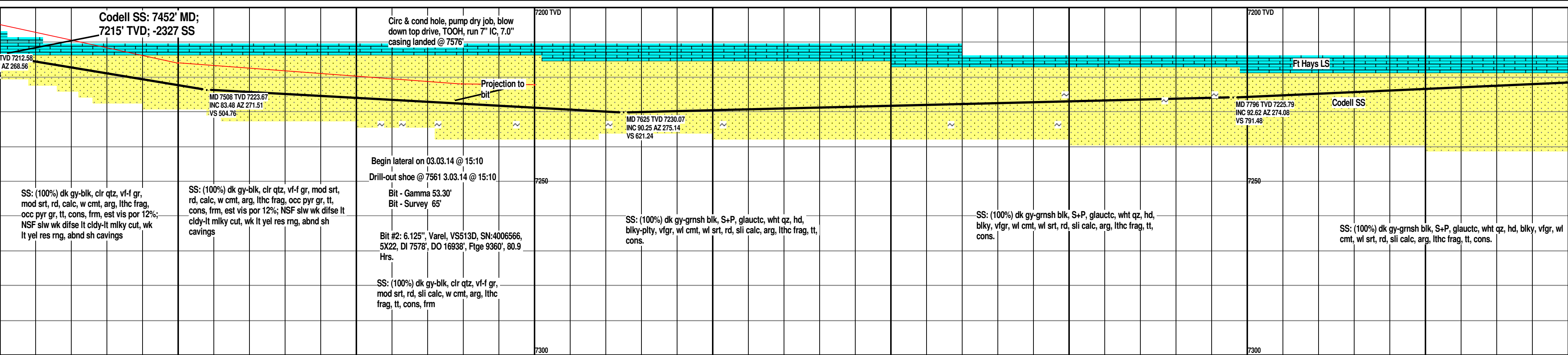
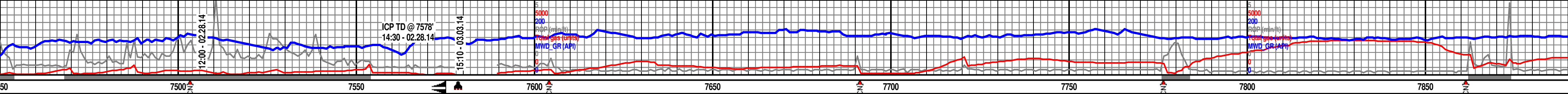


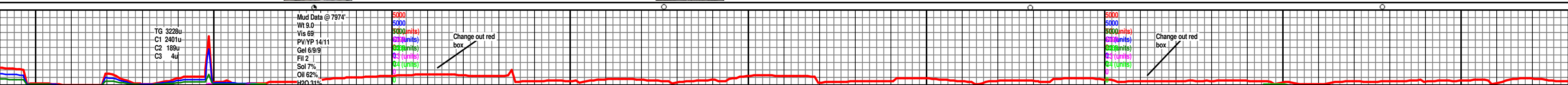
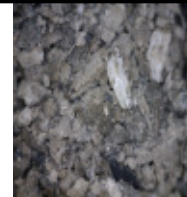
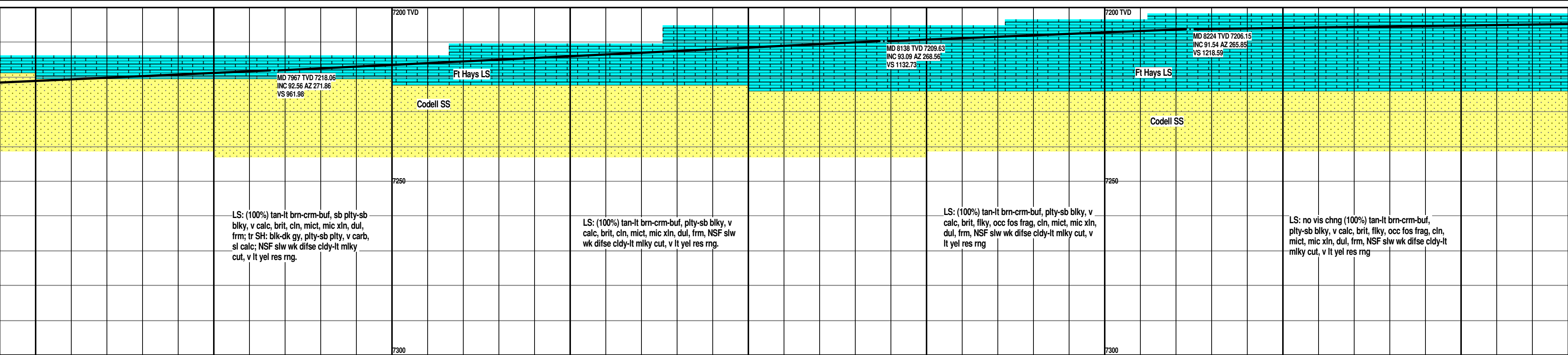
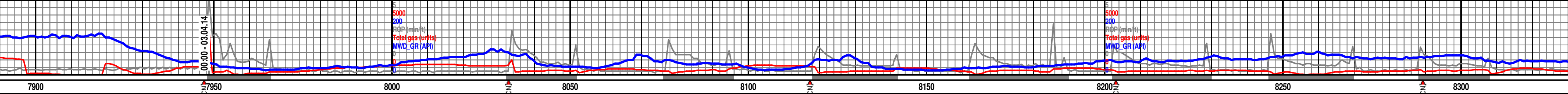
Poor

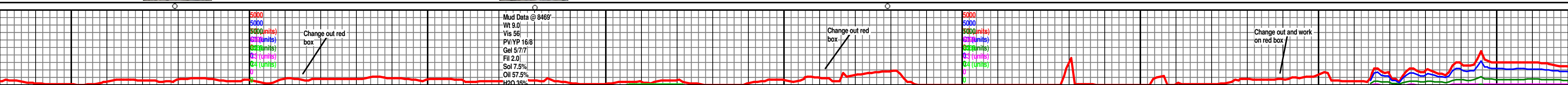
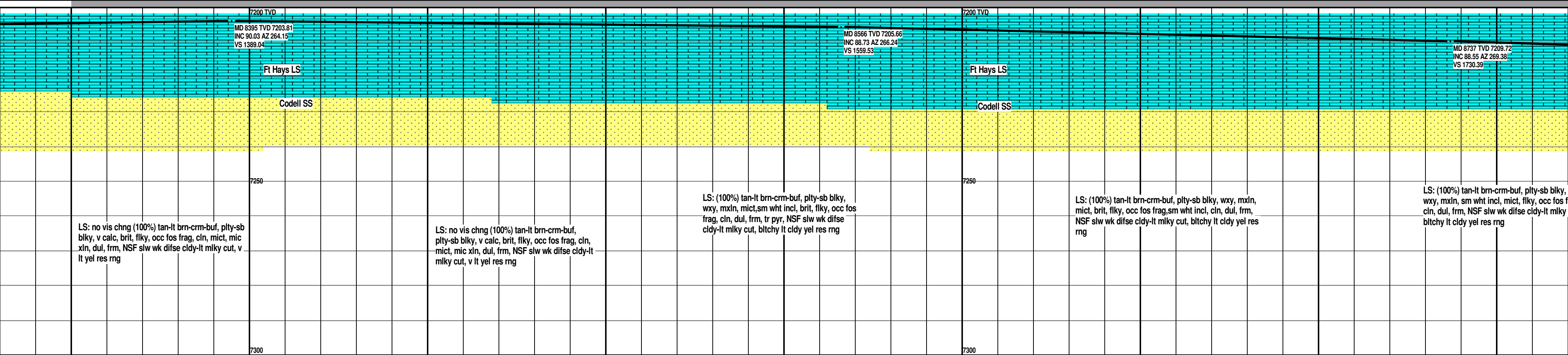




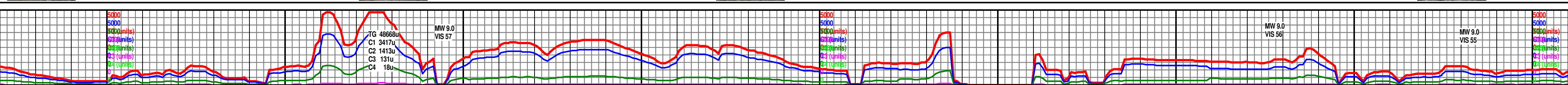
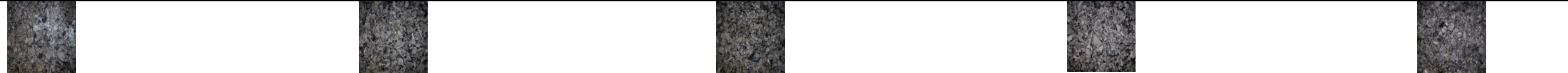
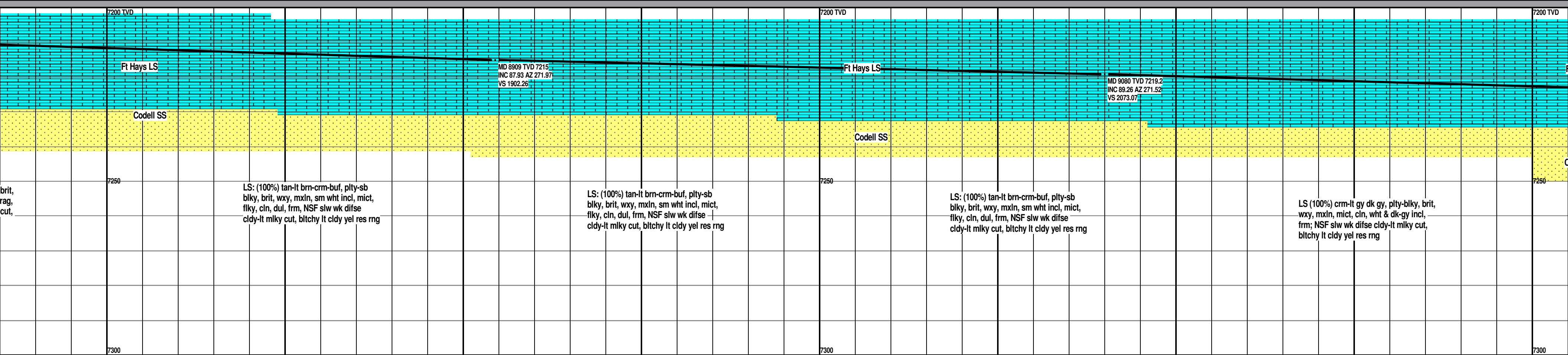
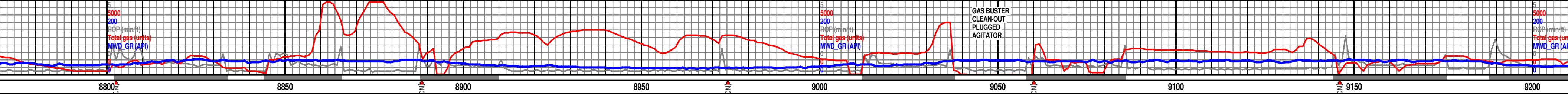


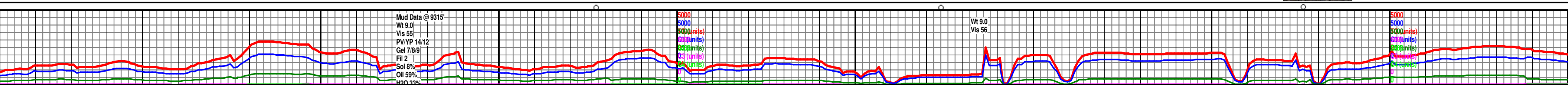
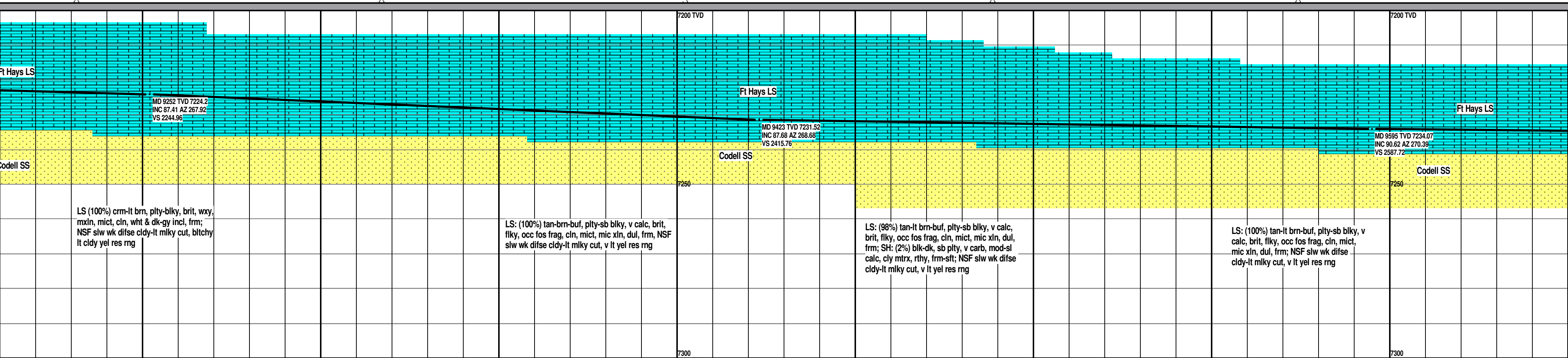
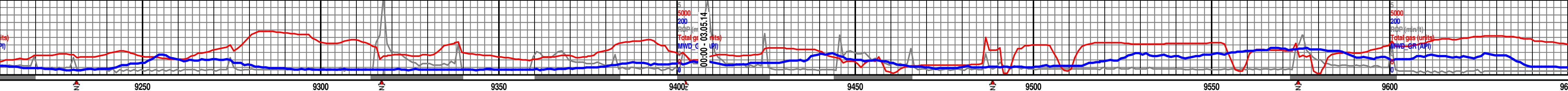


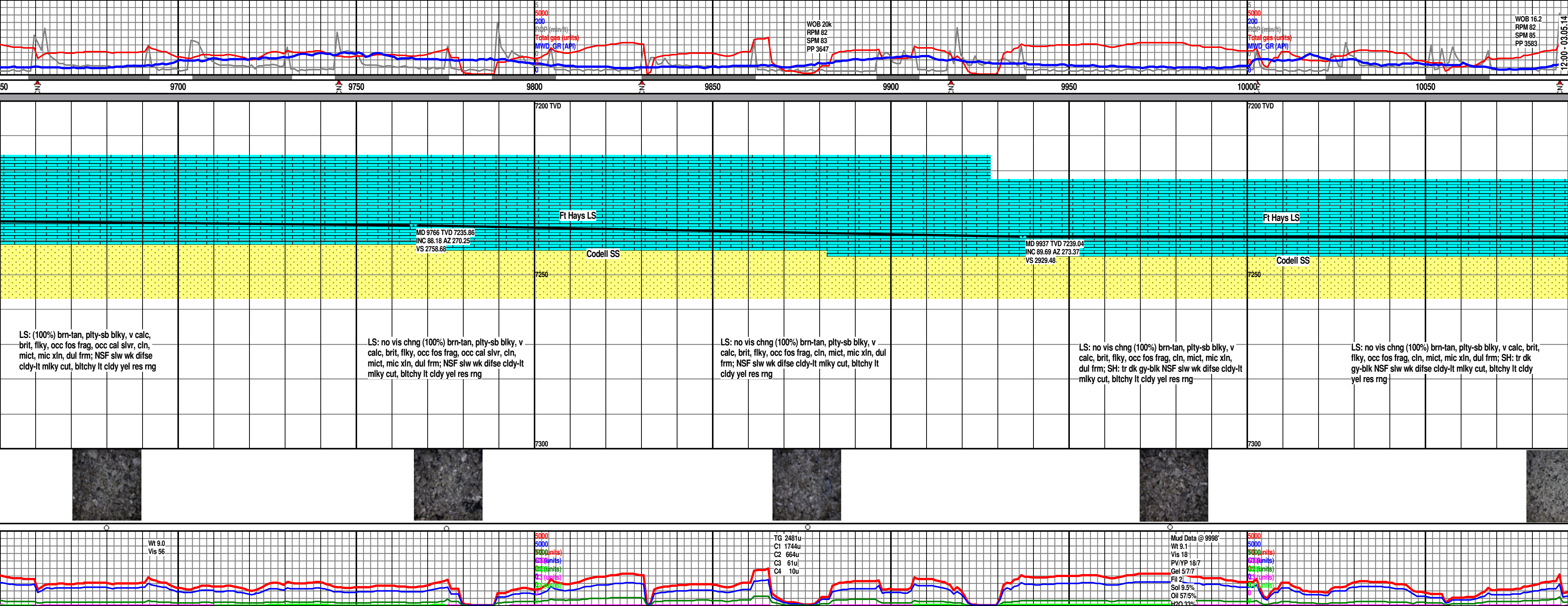


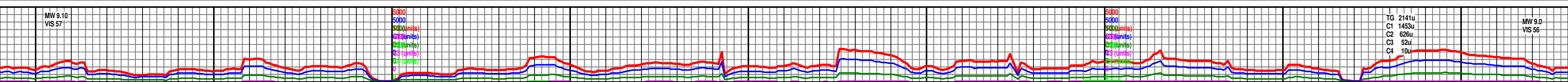
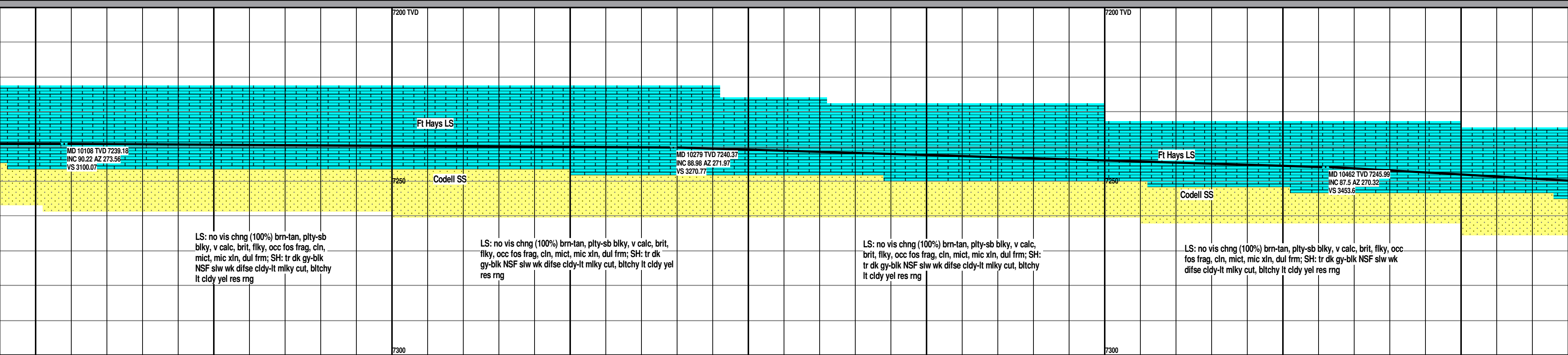
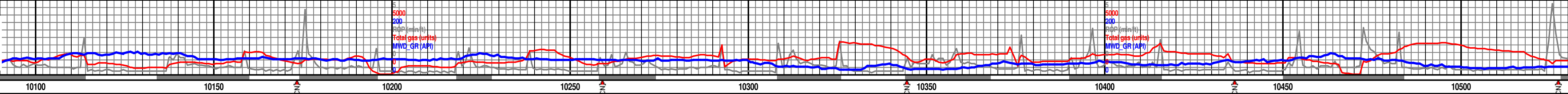




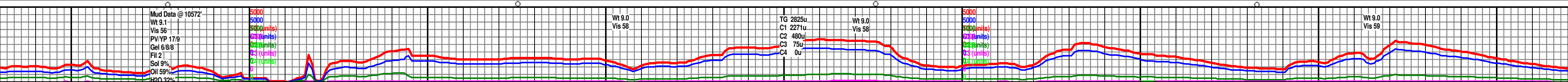
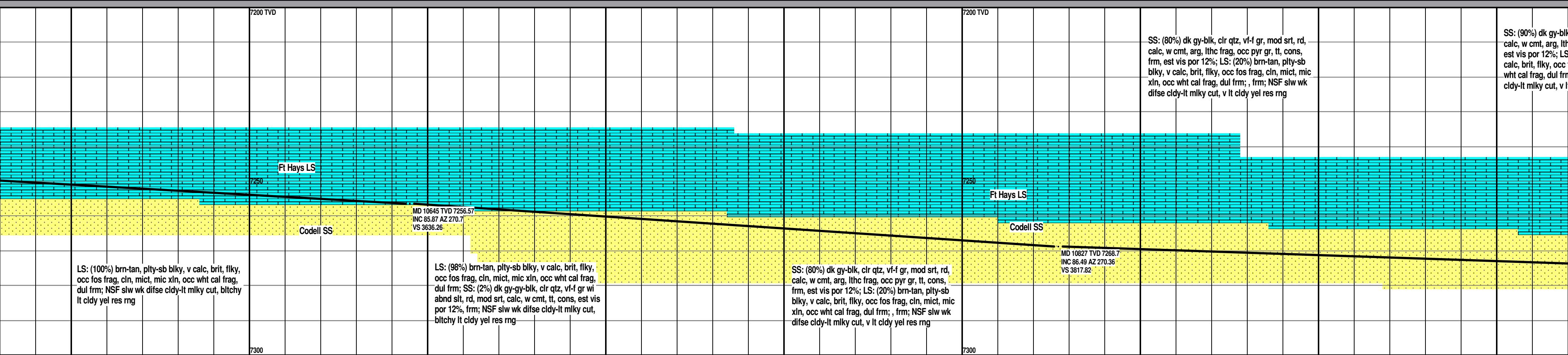
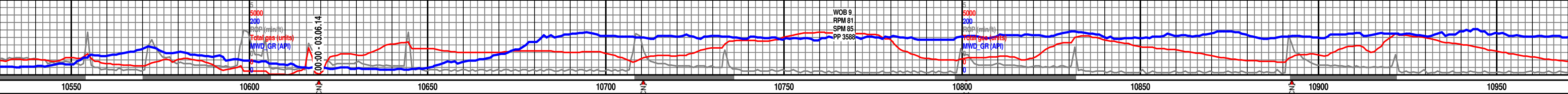


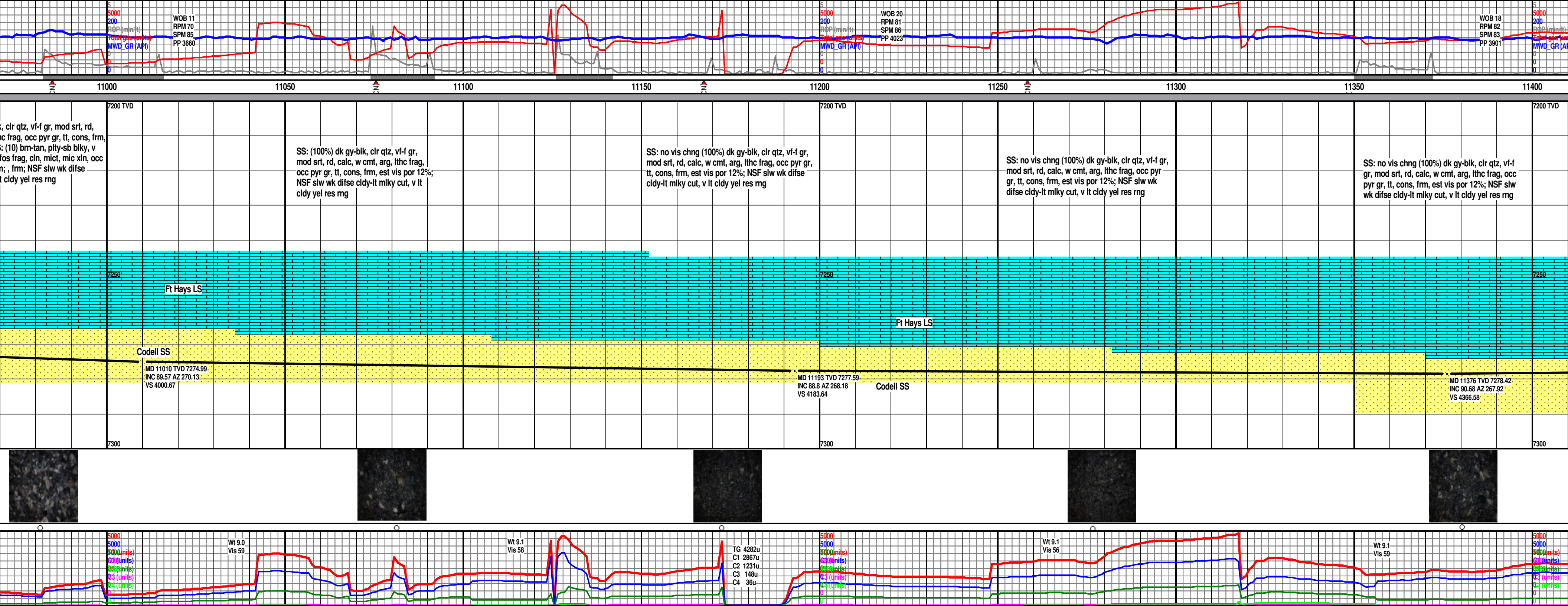


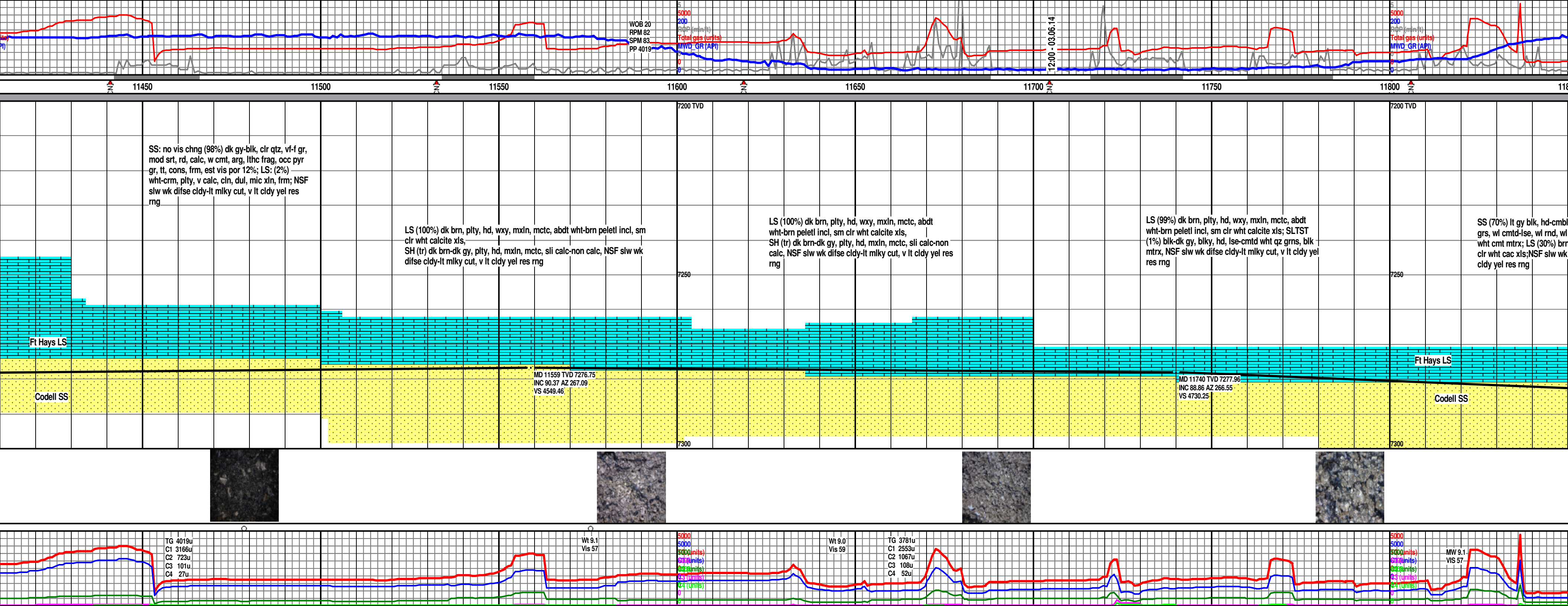


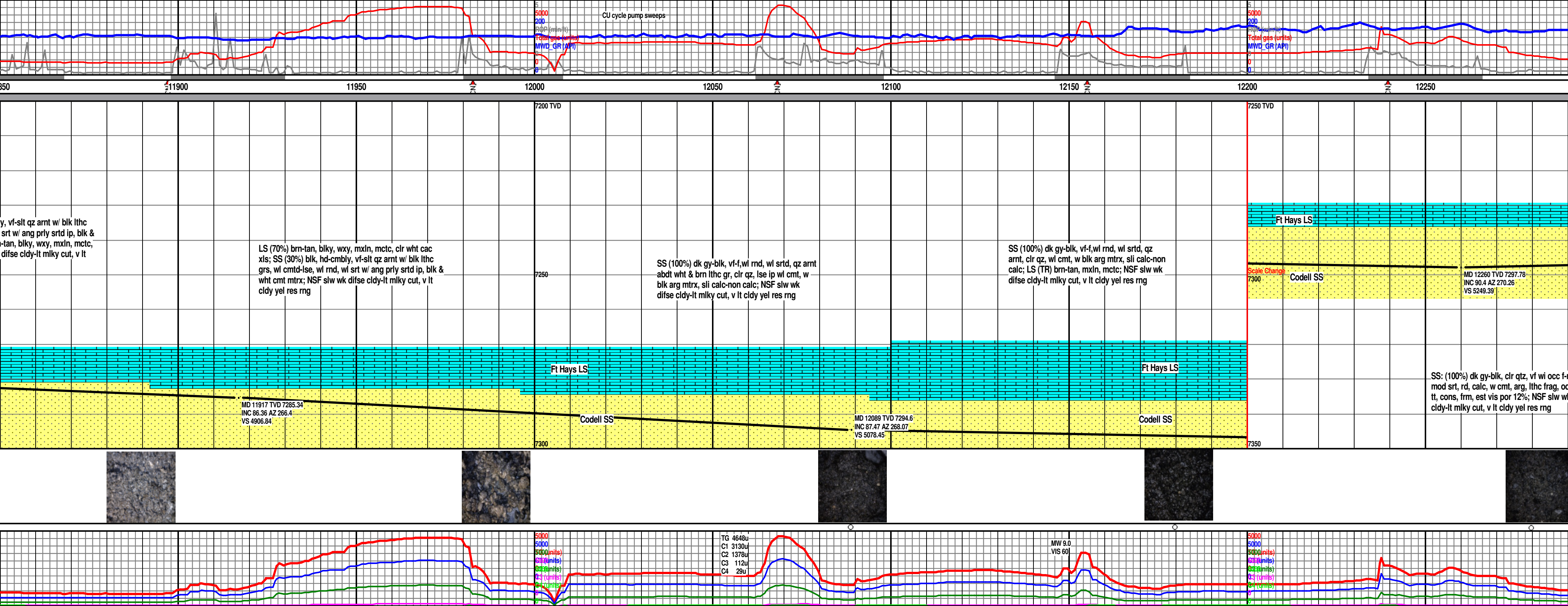




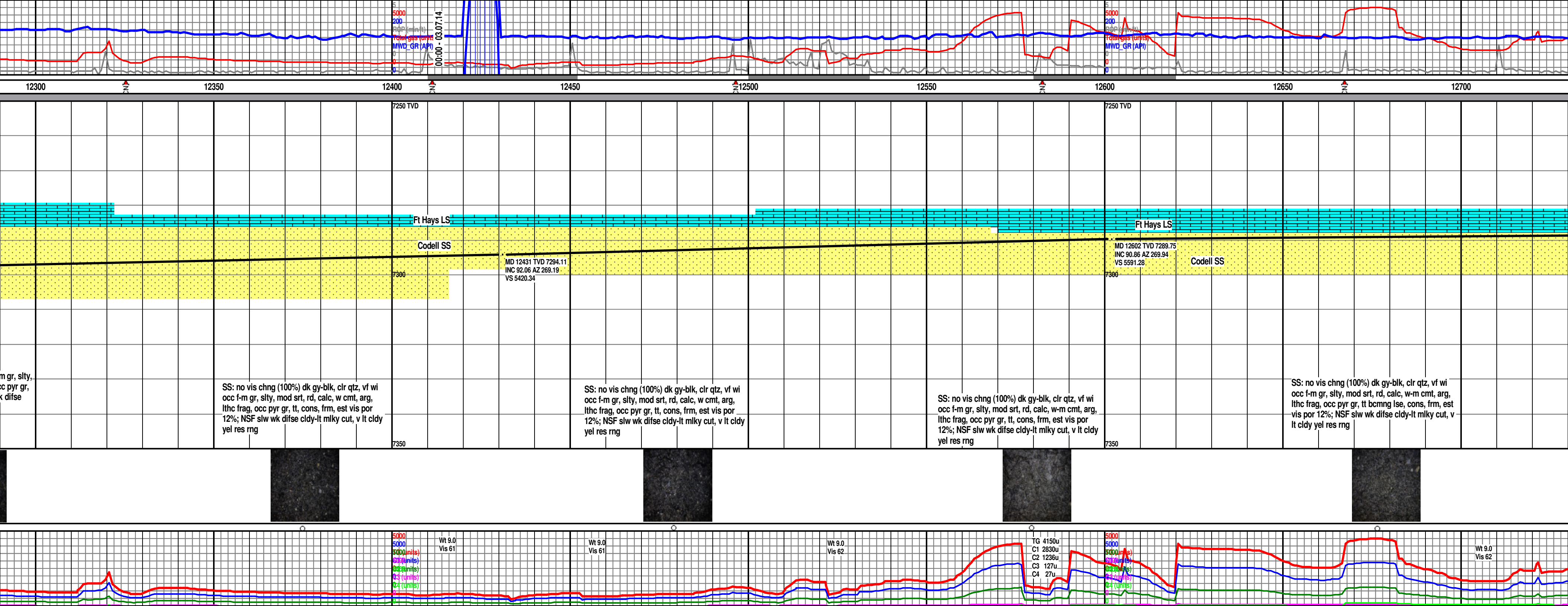


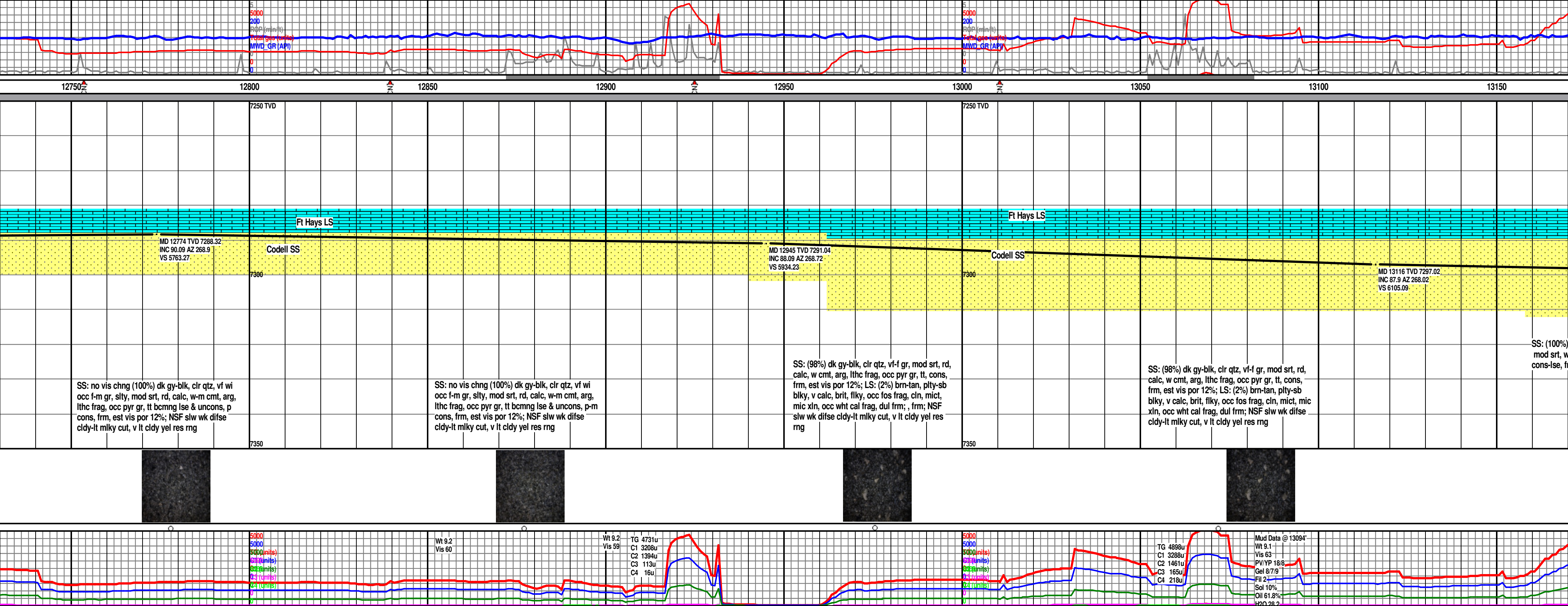


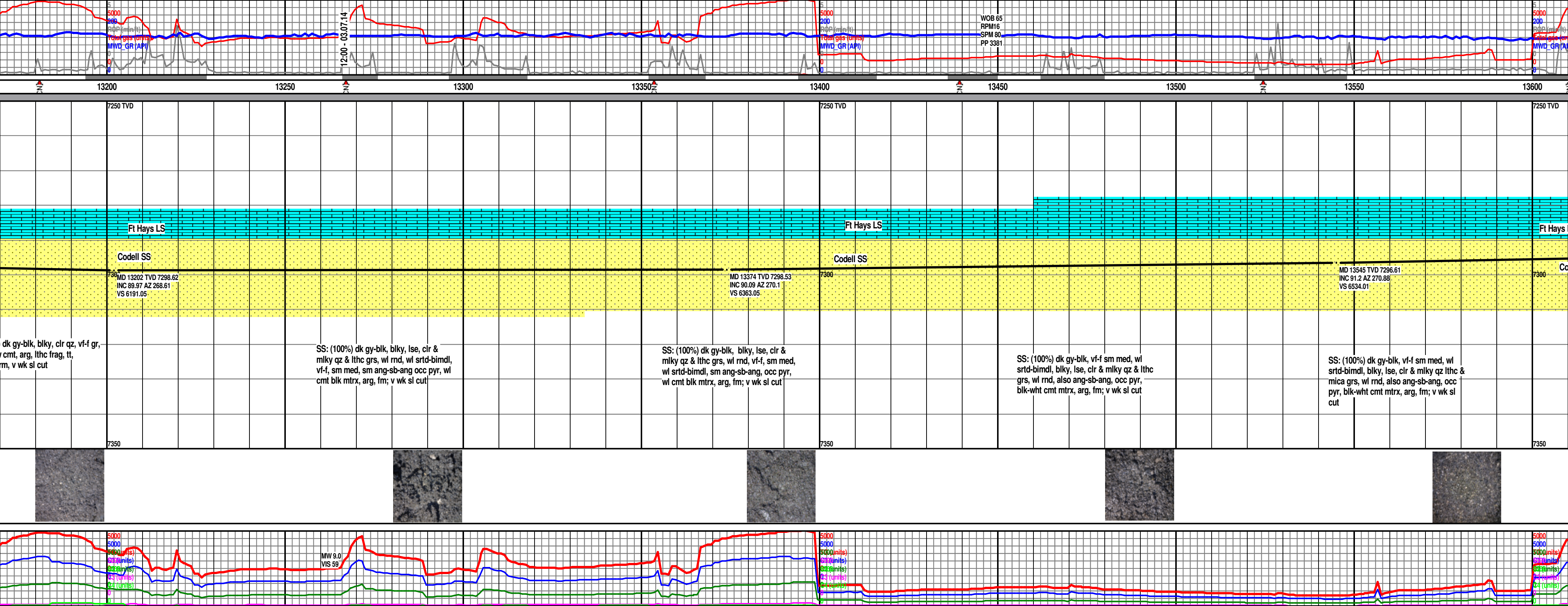


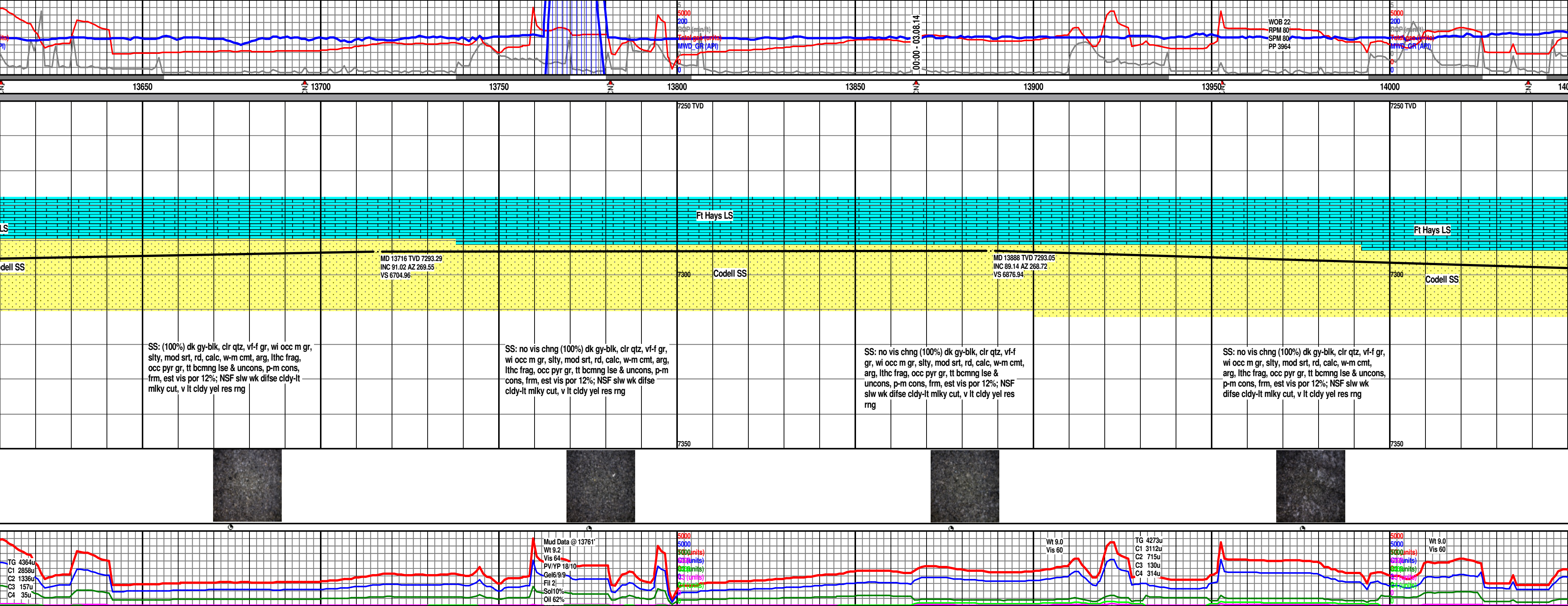




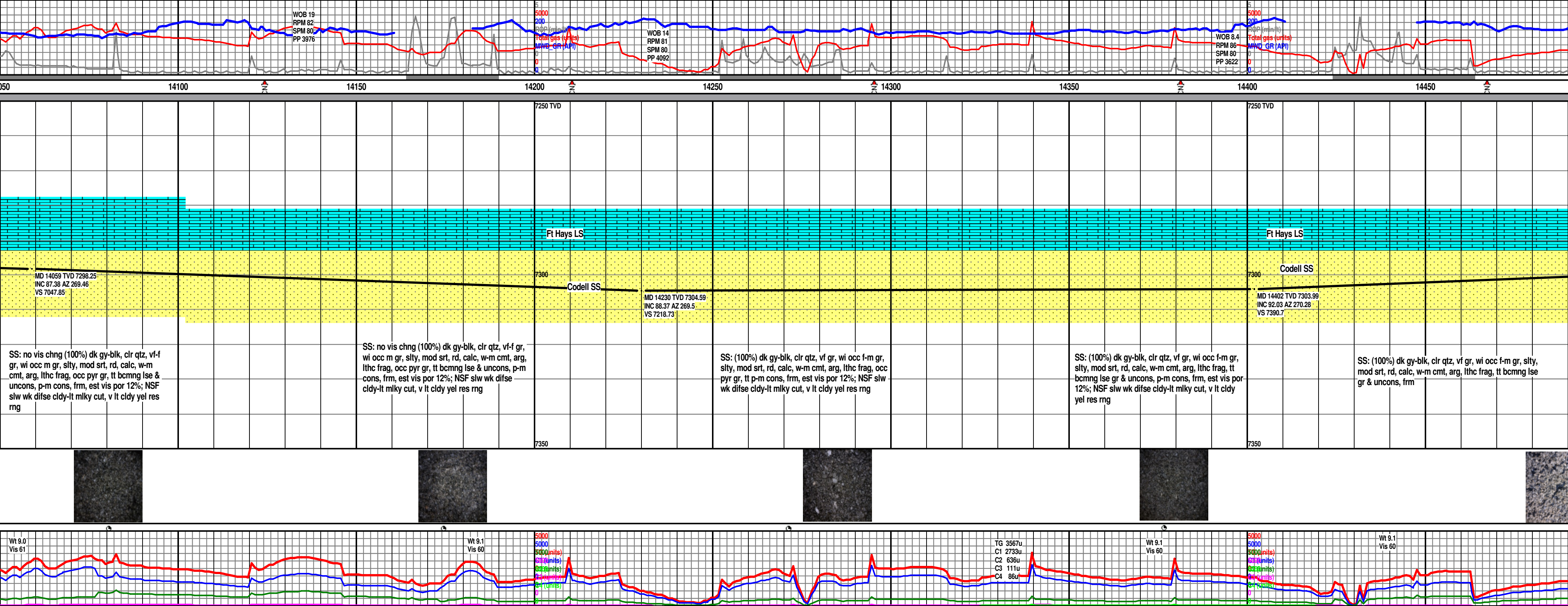


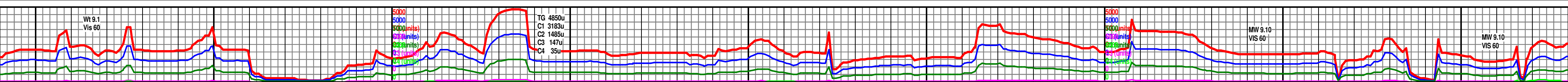
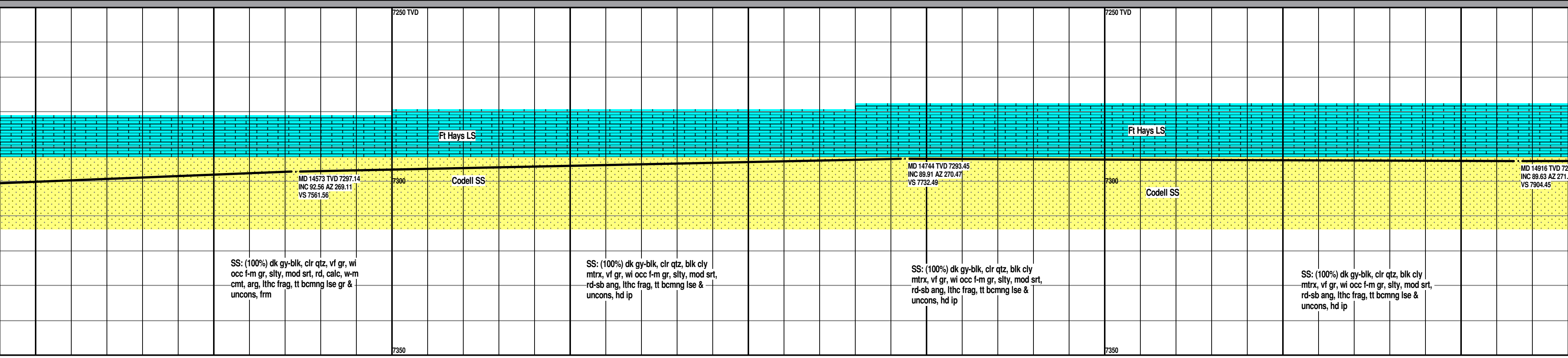
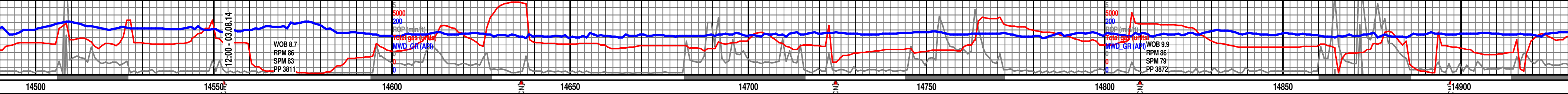


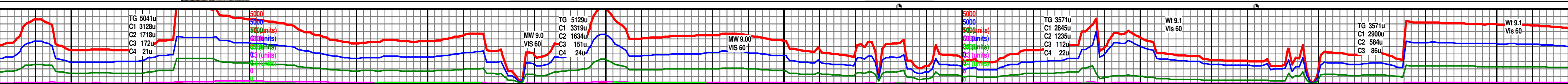
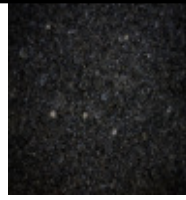
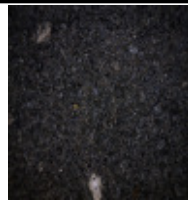
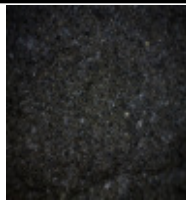
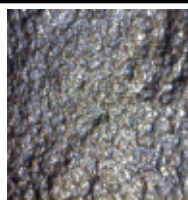
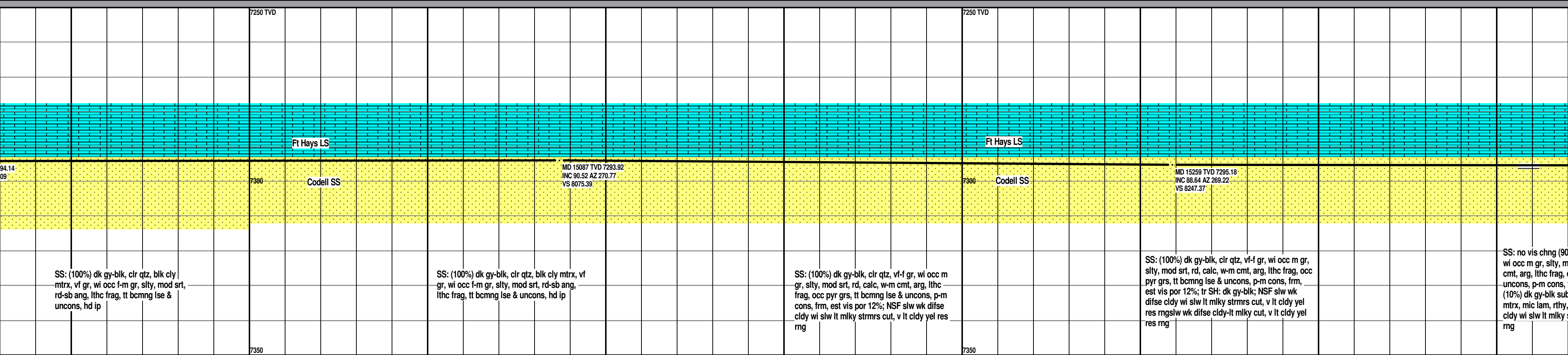
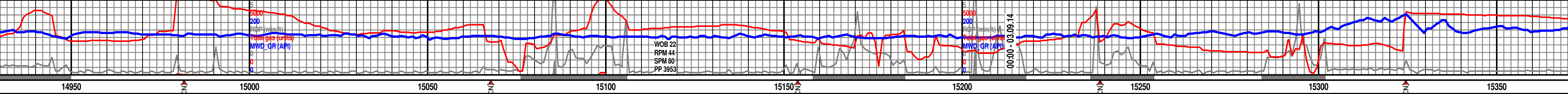




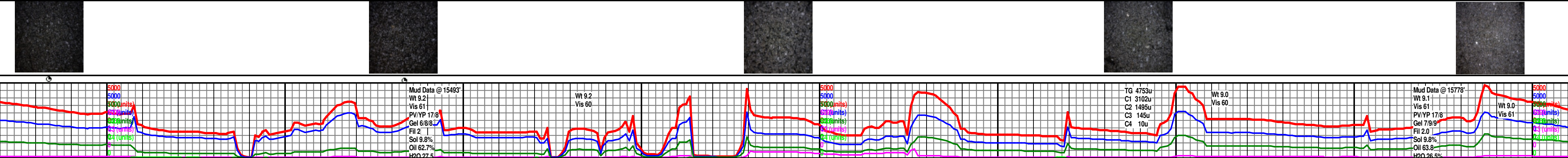
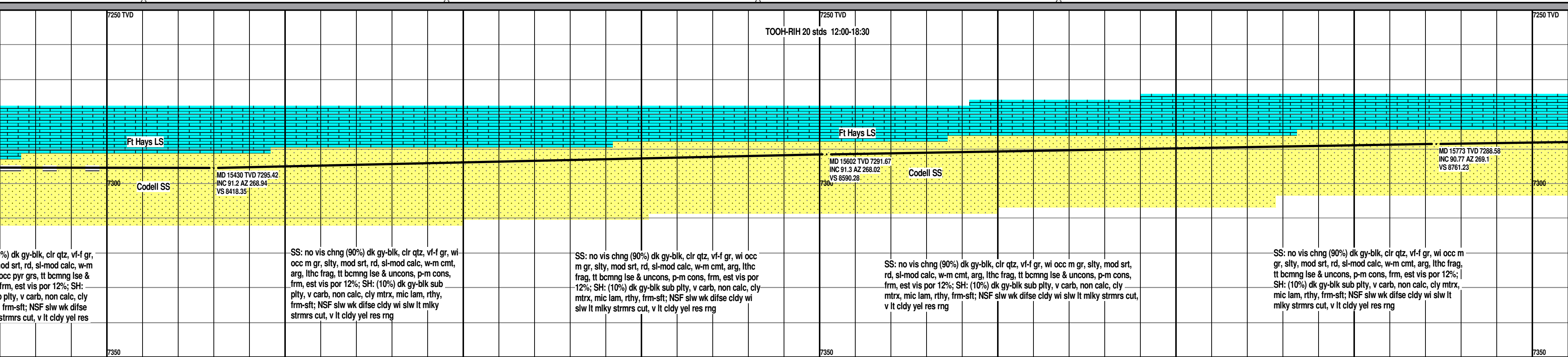




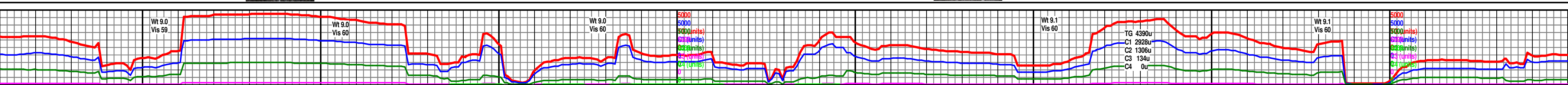
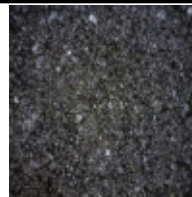
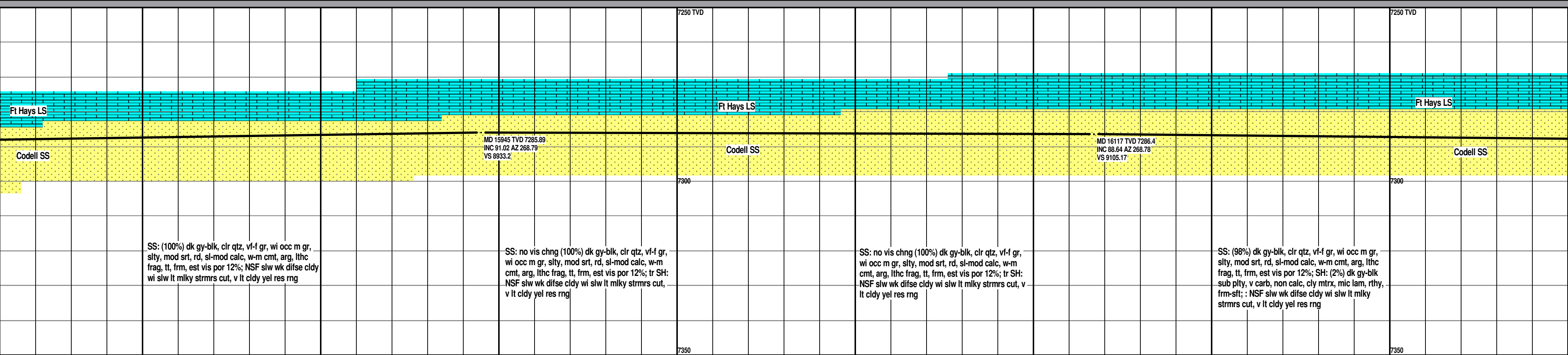
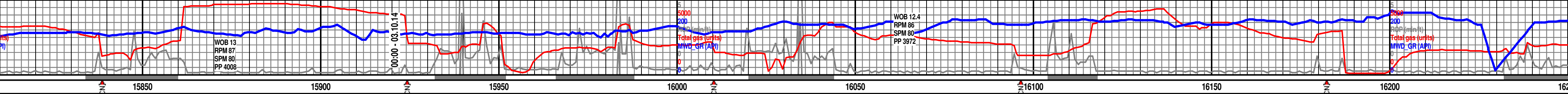


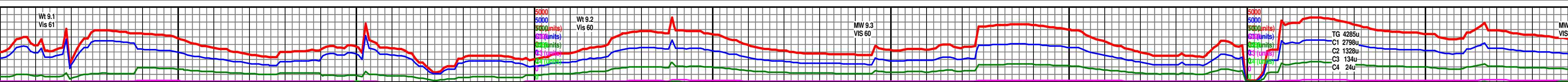
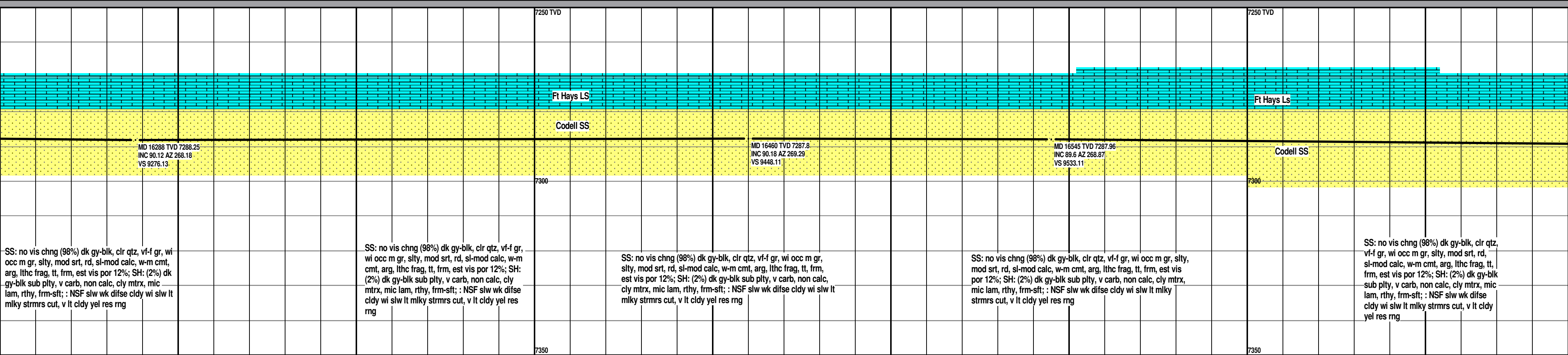
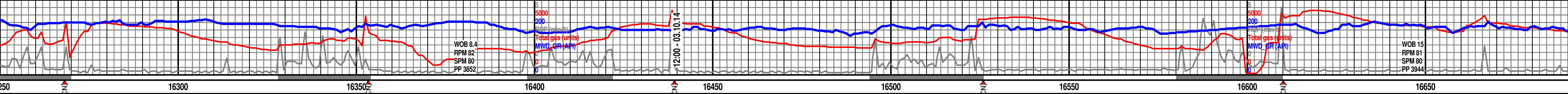


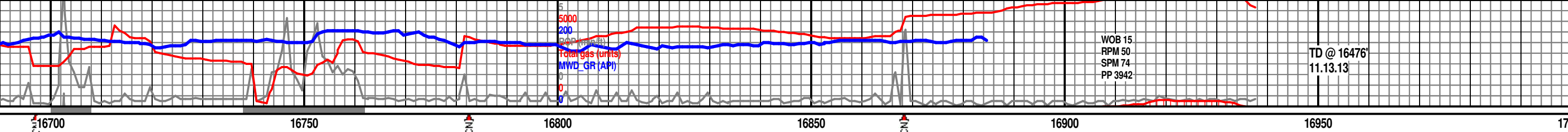












7250 TVD										small amount of gas being flared 21:17 03.10.14										Circ & Condition Hole, TOO H 2000' (14898') ream f/15400-bot, Circ & Condition Hole, TOO H, run in liner, cement liner.									
Ft Hays LS										Ft Hays Ls										Liner set @ 16928'									
MD 16717 TVD 7289.36 INC 89.47 AZ 269.46 VS 9705.1										Codell SS										TD 16476' MD @ Monday 19:40 - 03.10.14									
7300										MD 16873 TVD 7289.92 INC 90.12 AZ 268.06 VS 9861.08										Bit Projection									
7350										MD 16938 TVD 7289.78 INC 90.12 AZ 268.06 VS 9926.06										BOTTOM HOLE LOCATION 530' FNL X 50' FWL NWNW Sec 14, T3N_R68W									
SS: no vis chng (98%) dk gy-blk, clr qtz, vf-f gr, wi occ m gr, slty, mod srt, rd, sl-mod calc, w-m cmt, arg, lithc frag, tt, frm, est vis por 12%; SH: (2%) dk gy-blk sub plty, v carb, non calc, cly mtrx, mic lam, rthy, frm-sft; : NSF slw wk difse cldy wi slw lt milky strms cut, v lt cldy yel res rng										SS: no vis chng (98%) dk gy-blk, clr qtz, vf-f gr, wi occ m gr, slty, mod srt, rd, sl-mod calc, w-m cmt, arg, lithc frag, tt, frm, est vis por 12%; SH: (2%) dk gy-blk sub plty, v carb, non calc, cly mtrx, mic lam, rthy, frm-sft; : NSF slw wk difse cldy wi slw lt milky strms cut, v lt cldy yel res rng										SS: no vis chng (98%) dk gy-blk, clr qtz, vf-f gr, wi occ m gr, slty, mod srt, rd, sl-mod calc, w-m cmt, arg, lithc frag, tt, frm, est vis por 12%; SH: (2%) dk gy-blk sub plty, v carb, non calc, cly mtrx, mic lam, rthy, frm-sft; : NSF slw wk difse cldy wi slw lt milky strms cut, v lt cldy yel res rng									
																				THANK YOU FOR USING GOOLSBY BROTHERS & ASSOCIATES									
																				Jack R. Rogers Alex Caruana									

