

**ANADARKO PETROLEUM CORP - EBUS
DO NOT MAIL - PO BOX 4995
THE WOODLANDS, Texas**

AGGREGATE STATE 14N-W16HZ

Majors 42

Post Job Summary

Cement Surface Casing

Prepared for:
Date Prepared: 2/16/2014
Version: 1

Service Supervisor: WHIPPLE, WESLEY

Submitted by: FINNEY, SEAN

HALLIBURTON

HALLIBURTON

Wellbore Geometry

| Job Tubulars | | | | | MD | | Shoe Joint Length ft |
|-------------------|---------------------------|------------|----------|--------------|-----------|--------------|-------------------------|
| Type | Description | Size in | ID in | Wt lbm/ft | Top ft | Bottom ft | |
| Casing | 9 5/8" Surface Casing | 9.63 | 8.921 | 36.00 | 0.00 | 1,034.00 | 45.00 |
| Open Hole Section | 13 1/2" Open Hole Section | | 13.500 | | 0.00 | 1,034.00 | 0.00 |

HALLIBURTON

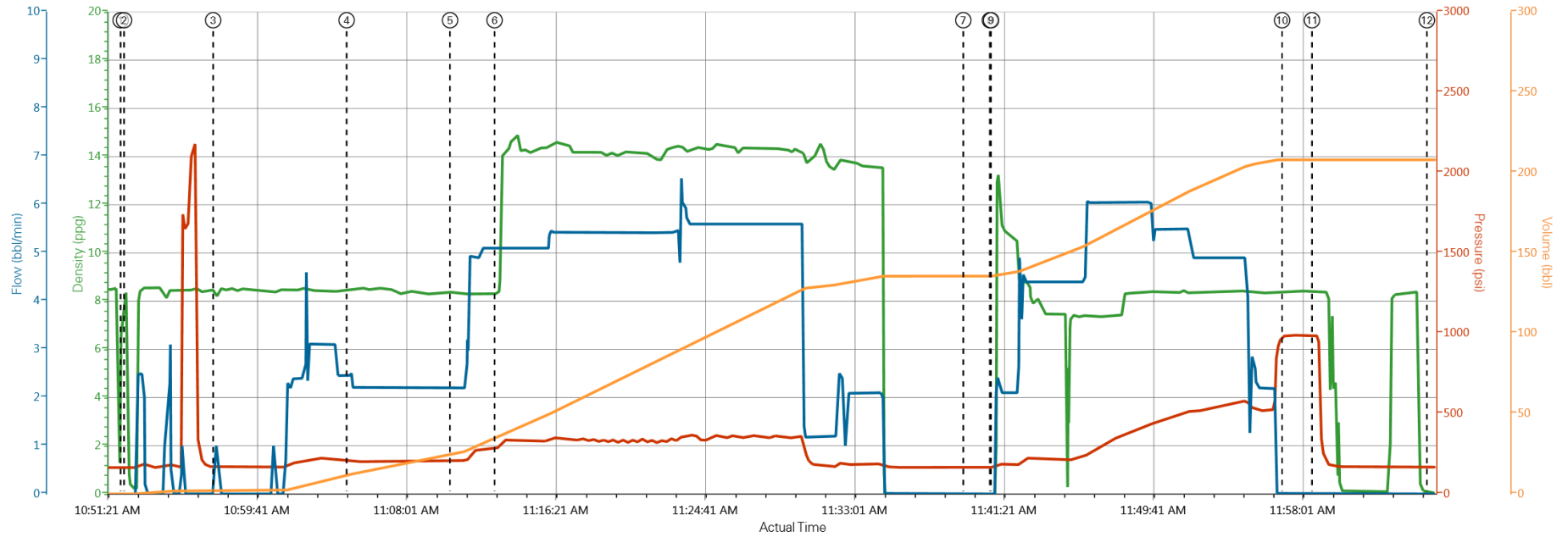
Pumping Schedule

| Stage /Plug # | Fluid # | Fluid Type | Fluid Name | Surface Density lbm/gal | Avg Rate bbl/min | Surface Volume | Downhole Volume |
|----------------------|----------------|-------------------|--------------------|--------------------------------|-------------------------|-----------------------|------------------------|
| 1 | 1 | Spacer | Fresh Water Spacer | 8.33 | 2.50 | 10.0 bbl | 10.0 bbl |
| 1 | 2 | Spacer | Mud Flush | 8.40 | 2.50 | 12.0 bbl | 12.0 bbl |
| 1 | 1 | Spacer | Fresh Water Spacer | 8.33 | 5.00 | 10.0 bbl | 10.0 bbl |
| 1 | 3 | Cement Slurry | SwiftCem B2 | 14.20 | 5.50 | 383.0 sacks | 383.0 sacks |

HALLIBURTON

Data Acquisition

ANADARKO AGGREGATE STATE 14N-W16HZ



DH Density (ppg) PS Pump Press (psi) PS Pump Rate (bbl/min) Comb Pump Total (bbl)

- ① Start Job 7.72;163;0;0 ④ Pump Spacer 2 8.44;205;2.4;12 ⑦ Shutdown -0.68;166;0;135.6 ⑩ Bump Plug 8.41;985;0;208
- ② Test Lines 6.87;162;0;0 ⑤ Pump Spacer 1 8.4;207;2.2;24.9 ⑧ Drop Top Plug -0.65;166;0;135.6 ⑪ Other 8.39;987;0;208
- ③ Pump Spacer 1 8.11;170;1;2 ⑥ Pump Cement 8.3;288;5.1;34.9 ⑨ Pump Displacement -0.64;166;0;135.6 ⑫ End Job 0.05;167;0;208

HALLIBURTON

Service Supervisor Reports

Job Log

| Date/Time | Chart # | Activity Code | Pump Rate | Cum Vol | Pump | Pressure (psig) | Comments |
|------------------|---------|-------------------|-----------|---------|------|-----------------|---|
| 02/02/2014 02:30 | | Call Out | | | | | CREW CALLED OUT BY ARS OFFICE @0230 AND REQUESTED ON LOCATION @0630. |
| 02/02/2014 06:00 | | Crew Leave Yard | | | | | CREW PRE TRIPPED ALL EQUIPMENT PRIOR TO DEPARTURE, HELD A PRE JOURNEY SAFETY MEETING TO DISCUSS ROUTE BEING TRAVELED, ROAD CONDITIONS, AND POTENTIAL DRIVING HAZARD. ALL DRIVERS FIT FOR DUTY |
| 02/02/2014 06:30 | | Arrive At Loc | | | | | ARRIVED ON LOCATION AND MET WITH COMPANY REP TO DISCUSS JOB DETAILS. RIG LANDED CASING UPON ARRIVAL @0630 |
| 02/02/2014 06:45 | | Rig-Up Equipment | | | | | HELD PRE RIG UP SAFETY MEETING TO DISCUSS RIG UP PROCESS, AND POTENTIAL HAZARDS. RIG LANDED CASING @ |
| 02/02/2014 10:30 | | Safety Meeting | | | | | HELD A PRE JOB SAFETY MEETING WITH ALL HANDS ON LOCATION TO DISCUSS JOB PROCESS AND PROCEDURES AND POTENTIAL HAZARDS THAT COULD OCCUR WHILE PUMPING CEMENT |
| 02/02/2014 10:46 | | Start Job | | | | | |
| 02/02/2014 10:47 | | Test Lines | | | | 2000.0 | PRESSURE TEST PUMPS AND LINES TO 2000PSI, FOUND NO LEAKS IN IRON AND PRESSURE HELD |
| 02/02/2014 10:52 | | Pump Spacer 1 | 2.5 | 10 | | 103.0 | PUMP FRESH WATER SPACER |
| 02/02/2014 10:59 | | Pump Spacer 2 | 2.5 | 12 | | 107.0 | MIX AND PUMP MUD FLUSH WITH FRESH WATER |
| 02/02/2014 11:05 | | Pump Spacer 1 | 5 | 10 | | 183.0 | PUMP FRESH WATER SPACER |
| 02/02/2014 11:07 | | Pump Cement | 5.5 | 105 | | 240.0 | MIX AND PUMP 386SKS OF SWIFTCEM @14.2PPG, DENSITY VERIFIED BY PRESSURIZED MUD SCALES |
| 02/02/2014 11:39 | | Shutdown | | | | | |
| 02/02/2014 11:40 | | Drop Top Plug | | | | | DROP TOP PLUG FROM HES PLUG CONTAINER, WITNESSED BY COMPANY REP |
| 02/02/2014 11:41 | | Pump Displacement | 5 | 75 | | 340.0 | PUMP FRESH WATER DISPLACEMENT, RECIEVED CEMENT TO SURFACE @55 BBLS AWAY |
| 02/02/2014 11:56 | | Bump Plug | | | | 1000.0 | BUMP PLUG 500PSI OVER FINAL PUMPING PRESSURE |
| 02/02/2014 11:58 | | Check Floats | | | | 1000.0 | RELEASED OF PSI BACK TO PUMP TRUCK, RECIEVED 1BBL BACK AND FLOATS HELD |
| 02/02/2014 12:05 | | End Job | | | | | COMMENCE RIG DOWN OF ALL EQUIPMENT, WET AND DRY CEMENT SAMPLES WERE LEFT ON LOCATION WITH COMPANY REP. |

The Road to Excellence Starts with Safety

| | | | |
|---|---------------------------|---|------------------------------------|
| Sold To #: 300466 | Ship To #: 3275796 | Quote #: | Sales Order #: 901089409 |
| Customer: ANADARKO PETROLEUM CORP - EBUS | | Customer Rep: Porter, Bob | |
| Well Name: AGGREGATE STATE | | Well #: 14N-W16HZ | API/UWI #: 05-123-38679 |
| Field: WATTENBERG | City (SAP): IONE | County/Parish: Weld | State: Colorado |
| Lat: N 40.152 deg. OR N 40 deg. 9 min. 6.923 secs. | | Long: W 104.784 deg. OR W -105 deg. 12 min. 57.082 secs. | |
| Contractor: Majors | | Rig/Platform Name/Num: Majors 42 | |
| Job Purpose: Cement Surface Casing | | | |
| Well Type: Development Well | | Job Type: Cement Surface Casing | |
| Sales Person: GREGORY, JON | | Srvc Supervisor: WHIPPLE, WESLEY | MBU ID Emp #: 518611 |

Job Personnel

| HES Emp Name | Exp Hrs | Emp # | HES Emp Name | Exp Hrs | Emp # | HES Emp Name | Exp Hrs | Emp # |
|--------------------------|---------|--------|------------------------|---------|--------|--------------------|---------|--------|
| GRIFFITHS, ZACHARY Sakae | 2.5 | 551430 | KOSAKEWICH, LUKE Wayne | 6.5 | 560003 | TAUILILI, SAI AIGA | 6.5 | 545471 |
| WHIPPLE, WESLEY Morgan | 6.5 | 518611 | | | | | | |

Equipment

| HES Unit # | Distance-1 way | HES Unit # | Distance-1 way | HES Unit # | Distance-1 way | HES Unit # | Distance-1 way |
|------------|----------------|------------|----------------|------------|----------------|------------|----------------|
| 10977079 | 10 mile | 11341988C | 10 mile | 11562546C | 10 mile | 11605599 | 10 mile |

Job Hours

| Date | On Location Hours | Operating Hours | Date | On Location Hours | Operating Hours | Date | On Location Hours | Operating Hours |
|------|-------------------|-----------------|------|-------------------|-----------------|------|-------------------|-----------------|
| | | | | | | | | |

TOTAL Total is the sum of each column separately

Job

Job Times

| Formation Name | Formation Depth (MD) Top | Bottom | Called Out | Date | Time | Time Zone |
|------------------------------------|--------------------------|--------------------------|----------------------|-----------------|-------|-----------|
| | | | | 02 - Feb - 2014 | 02:30 | MST |
| Form Type | | BHST | On Location | 02 - Feb - 2014 | 06:30 | MST |
| Job depth MD | 1034. ft | Job Depth TVD | Job Started | 02 - Feb - 2014 | 10:46 | MST |
| Water Depth | | Wk Ht Above Floor | Job Completed | 02 - Feb - 2014 | 12:05 | MST |
| Perforation Depth (MD) From | | To | Departed Loc | 02 - Feb - 2014 | 13:00 | MST |

Well Data

| Description | New / Used | Max pressure psig | Size in | ID in | Weight lbm/ft | Thread | Grade | Top MD ft | Bottom MD ft | Top TVD ft | Bottom TVD ft |
|---------------------------|------------|-------------------|---------|-------|---------------|--------|-------|-----------|--------------|------------|---------------|
| 13 1/2" Open Hole Section | | | | 13.5 | | | | . | 1034. | | |
| 9 5/8" Surface Casing | Unknown | | 9.625 | 8.921 | 36. | | J-55 | . | 1034. | | |

Sales/Rental/3rd Party (HES)

| Description | Qty | Qty uom | Depth | Supplier |
|--------------------------------------|-----|---------|-------|----------|
| CMT CASING EQUIPMENT BOM | 1 | JOB | | |
| MILEAGE FOR CEMENTING CREW,ZI | 20 | MI | | |
| ZI FUEL SURCHG-CARS/PICKUPS<1 1/2TON | 20 | MI | | |
| Description | Qty | Qty uom | Depth | Supplier |

| | | | | |
|---|---|----|--|--|
| KIT,HALL WELD-A | 1 | EA | | |
| CNTRLZR, 9 5/8'x13 3/4',#500-0963-1375 | 9 | EA | | |
| BASKET - CEMENT - 9-5/8 CSG X 12-1/4 | 1 | EA | | |
| PLUG,CMTG, TOP,9 5/8,HWE,8.16 MIN/9.06 MA | 1 | EA | | |
| COLLAR-STOP-9 5/8"-FRICTION-HINGED | 2 | EA | | |

Fluid Data

Stage/Plug #: 1

| Fluid # | Stage Type | Fluid Name | Qty | Qty uom | Mixing Density lbm/gal | Yield ft3/sk | Mix Fluid Gal/sk | Rate bbl/min | Total Mix Fluid Gal/sk |
|---------|--------------------|---------------------------------------|-------|---------|------------------------|--------------|------------------|--------------|------------------------|
| 1 | Fresh Water Spacer | | 10.0 | bbl | 8.33 | | | 2.5 | |
| 2 | Mud Flush | | 12.0 | bbl | 8.4 | | | 2.5 | |
| | 3.5 lbm/bbl | MUD FLUSH III, 40 LB SACK (101633304) | | | | | | | |
| | 42 gal/bbl | MUD FLUSH III - SBM (528788) | | | | | | | |
| 1 | Fresh Water Spacer | | 10.0 | bbl | 8.33 | | | 5.0 | |
| 3 | SwiftCem B2 | SWIFTCEM (TM) SYSTEM (452990) | 383.0 | sacks | 14.2 | 1.54 | 7.66 | 5.5 | 7.66 |
| | 7.66 Gal | FRESH WATER | | | | | | | |

Calculated Values

Pressures

Volumes

| | | | | | | | | | |
|---------------|--|------------------|--|----------------|----|---------------------|----|-----------|--|
| Displacement | | Shut In: Instant | | Lost Returns | | Cement Slurry | | Pad | |
| Top Of Cement | | 5 Min | | Cement Returns | 20 | Actual Displacement | 75 | Treatment | |
| Frac Gradient | | 15 Min | | Spacers | 32 | Load and Breakdown | | Total Job | |

Rates

| | | | | | | | |
|---------------------|--------|-----------------|--------|-----------------|----|-----------------|----|
| Circulating | | Mixing | | Displacement | | Avg. Job | |
| Cement Left In Pipe | Amount | 45 ft | Reason | Shoe Joint | | | |
| Frac Ring # 1 @ | ID | Frac ring # 2 @ | ID | Frac Ring # 3 @ | ID | Frac Ring # 4 @ | ID |

The Information Stated Herein Is Correct

Customer Representative Signature

