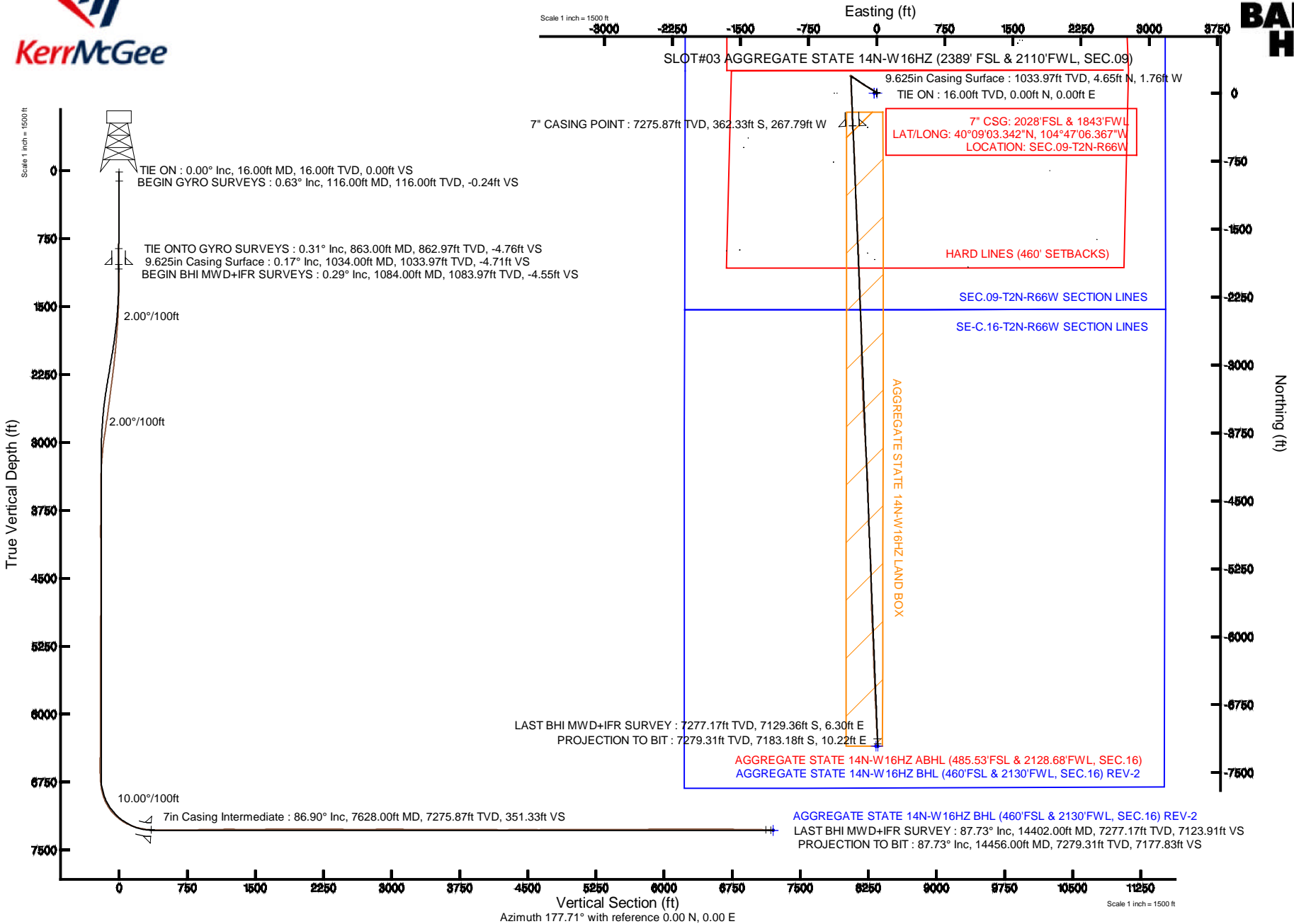


# KERR-MCGEE OIL & GAS ONSHORE LP

Location: COLORADO Slot: SLOT#03 AGGREGATE STATE 14N-W16HZ (2389' FSL & 2110'FWL, SEC.09)  
 Field: WELD COUNTY (KERR MCGEE) Well: AGGREGATE STATE 14N-W16HZ  
 Facility: SEC.09-T2N-R66W Wellbore: AGGREGATE STATE 14N-W16HZ PWB

Plot reference wellpath is AGGREGATE STATE 14N-W16HZ (REV-A.0) PWP

True vertical depths are referenced to XTREME 20 (RKB)	Grid System: NAD83 / Lambert Colorado SP, Northern Zone (501), US feet
Measured depths are referenced to XTREME 20 (RKB)	North Reference: True north
XTREME 20 (RKB) to Mean Sea Level: 4927 feet	Scale: True distance
Mean Sea Level to Mud line (At Slot: SLOT#03 AGGREGATE STATE 14N-W16HZ (2389' FSL & 2110'FWL, SEC.09)): 0 feet	Depths are in feet
Coordinates are in feet referenced to Slot	Created by: robale01 on 07/May/2014



REFERENCE WELLPATH IDENTIFICATION			
Operator	KERR-MCGEE OIL & GAS ONSHORE LP	Slot	SLOT#03 AGGREGATE STATE 14N-W16HZ (2389' FSL & 2110'FWL, SEC.09)
Area	COLORADO	Well	AGGREGATE STATE 14N-W16HZ
Field	WELD COUNTY (KERR MCGEE)	Wellbore	AGGREGATE STATE 14N-W16HZ AWB
Facility	SEC.09-T2N-R66W		

REPORT SETUP INFORMATION			
Projection System	NAD83 / Lambert Colorado SP, Northern Zone (501), US feet	Software System	WellArchitect@ 4.0.0
North Reference	True	User	Robiale01
Scale	0.999958	Report Generated	07/May/2014 at 10:54
Convergence at slot	n/a	Database/Source file	WellArchitectDB/AGGREGATE_STATE_14N-W16HZ_AWB.xml

WELLPATH LOCATION						
	Local coordinates		Grid coordinates		Geographic coordinates	
	North[ft]	East[ft]	Easting[US ft]	Northing[US ft]	Latitude	Longitude
Slot Location	-771.06	-2612.01	3200100.72	1298996.60	40°09'06.923"N	104°47'02.918"W
Facility Reference Pt			3202706.22	1299788.95	40°09'14.544"N	104°46'29.280"W
Field Reference Pt			3197771.84	1268891.29	40°04'09.600"N	104°47'36.000"W

WELLPATH DATUM			
Calculation method	Minimum curvature	XTREME 20 (RKB) to Facility Vertical Datum	4927.00ft
Horizontal Reference Pt	Slot	XTREME 20 (RKB) to Mean Sea Level	4927.00ft
Vertical Reference Pt	XTREME 20 (RKB)	XTREME 20 (RKB) to Mud Line at Slot (SLOT#03 AGGREGATE STATE 14N-W16HZ (2389' FSL & 2110'FWL, SEC.09))	4927.00ft
MD Reference Pt	XTREME 20 (RKB)	Section Origin	N 0.00, E 0.00 ft
Field Vertical Reference	Mean Sea Level	Section Azimuth	177.71°

REFERENCE WELLPATH IDENTIFICATION			
Operator	KERR-MCGEE OIL & GAS ONSHORE LP	Slot	SLOT#03 AGGREGATE STATE 14N-W16HZ (2389' FSL & 2110'FWL, SEC.09)
Area	COLORADO	Well	AGGREGATE STATE 14N-W16HZ
Field	WELD COUNTY (KERR MCGEE)	Wellbore	AGGREGATE STATE 14N-W16HZ AWB
Facility	SEC.09-T2N-R66W		

WELLPATH DATA (160 stations) † = interpolated/extrapolated station										
MD [ft]	Inclination [°]	Azimuth [°]	TVD [ft]	Vert Sect [ft]	North [ft]	East [ft]	Latitude	Longitude	DLS [°/100ft]	Comments
0.00†	0.000	62.170	0.00	0.00	0.00	0.00	40°09'06.923"N	104°47'02.918"W	0.00	
16.00	0.000	62.170	16.00	0.00	0.00	0.00	40°09'06.923"N	104°47'02.918"W	0.00	TIE ON
116.00	0.630	62.170	116.00	-0.24	0.26	0.49	40°09'06.926"N	104°47'02.912"W	0.63	BEGIN GYRO SURVEYS
216.00	0.640	2.590	215.99	-1.03	1.07	1.00	40°09'06.934"N	104°47'02.905"W	0.63	
316.00	0.350	219.300	315.99	-1.36	1.39	0.83	40°09'06.937"N	104°47'02.907"W	0.94	
416.00	0.600	347.100	415.99	-1.64	1.67	0.52	40°09'06.939"N	104°47'02.911"W	0.86	
516.00	0.470	334.740	515.98	-2.54	2.55	0.23	40°09'06.948"N	104°47'02.915"W	0.17	
616.00	0.420	326.090	615.98	-3.23	3.22	-0.15	40°09'06.955"N	104°47'02.920"W	0.08	
716.00	0.490	323.340	715.98	-3.89	3.87	-0.61	40°09'06.961"N	104°47'02.926"W	0.07	
816.00	0.500	313.880	815.98	-4.56	4.52	-1.18	40°09'06.968"N	104°47'02.933"W	0.08	
863.00	0.310	290.110	862.97	-4.76	4.70	-1.45	40°09'06.969"N	104°47'02.937"W	0.53	TIE ONTO GYRO SURVEYS
1084.00	0.290	138.540	1083.97	-4.55	4.49	-1.64	40°09'06.967"N	104°47'02.939"W	0.26	BEGIN BHI MWD+IFR SURVEYS
1178.00	0.310	184.110	1177.97	-4.11	4.06	-1.50	40°09'06.963"N	104°47'02.937"W	0.25	
1272.00	0.130	252.840	1271.97	-3.83	3.77	-1.62	40°09'06.960"N	104°47'02.939"W	0.31	
1366.00	1.570	325.010	1365.96	-4.89	4.79	-2.46	40°09'06.970"N	104°47'02.950"W	1.63	
1459.00	2.680	309.400	1458.89	-7.41	7.22	-4.87	40°09'06.994"N	104°47'02.981"W	1.34	
1554.00	4.600	305.060	1553.70	-11.20	10.82	-9.71	40°09'07.030"N	104°47'03.043"W	2.04	
1646.00	5.590	306.150	1645.33	-16.22	15.58	-16.35	40°09'07.077"N	104°47'03.128"W	1.08	
1737.00	6.140	306.400	1735.86	-22.02	21.08	-23.84	40°09'07.131"N	104°47'03.225"W	0.61	
1829.00	7.250	305.430	1827.23	-28.65	27.37	-32.53	40°09'07.193"N	104°47'03.337"W	1.21	
1921.00	8.640	302.640	1918.34	-36.16	34.46	-43.08	40°09'07.264"N	104°47'03.473"W	1.57	
2013.00	9.920	300.070	2009.14	-44.36	42.16	-55.76	40°09'07.340"N	104°47'03.636"W	1.46	
2104.00	11.700	298.770	2098.52	-53.31	50.53	-70.63	40°09'07.422"N	104°47'03.828"W	1.97	
2196.00	12.380	301.250	2188.50	-63.58	60.13	-87.24	40°09'07.517"N	104°47'04.042"W	0.93	
2287.00	12.690	297.700	2277.33	-73.96	69.84	-104.43	40°09'07.613"N	104°47'04.263"W	0.91	
2379.00	13.290	301.130	2366.97	-84.84	80.00	-122.43	40°09'07.714"N	104°47'04.495"W	1.06	
2470.00	12.820	302.220	2455.62	-96.32	90.79	-139.92	40°09'07.820"N	104°47'04.720"W	0.58	
2562.00	12.830	304.900	2545.33	-108.28	102.08	-156.94	40°09'07.932"N	104°47'04.939"W	0.65	
2654.00	12.670	305.470	2635.06	-120.63	113.78	-173.53	40°09'08.047"N	104°47'05.153"W	0.22	
2746.00	12.500	305.860	2724.85	-132.96	125.47	-189.82	40°09'08.163"N	104°47'05.363"W	0.21	
2838.00	13.490	306.140	2814.49	-145.78	137.63	-206.55	40°09'08.283"N	104°47'05.578"W	1.08	
2930.00	12.920	306.280	2904.06	-158.87	150.04	-223.51	40°09'08.406"N	104°47'05.796"W	0.62	
3022.00	11.680	306.380	2993.95	-171.10	161.65	-239.30	40°09'08.520"N	104°47'06.000"W	1.35	
3114.00	10.230	302.230	3084.27	-181.55	171.53	-253.71	40°09'08.618"N	104°47'06.185"W	1.79	
3206.00	7.610	303.060	3175.15	-189.70	179.22	-265.73	40°09'08.694"N	104°47'06.340"W	2.85	
3297.00	5.830	301.710	3265.52	-195.78	184.93	-274.71	40°09'08.751"N	104°47'06.456"W	1.96	
3389.00	3.770	299.750	3357.19	-199.99	188.89	-281.31	40°09'08.790"N	104°47'06.541"W	2.25	
3480.00	2.750	292.050	3448.04	-202.48	191.19	-285.93	40°09'08.812"N	104°47'06.600"W	1.22	
3572.00	1.930	281.130	3539.97	-203.75	192.32	-289.50	40°09'08.824"N	104°47'06.646"W	1.01	
3663.00	0.930	230.240	3630.94	-203.66	192.15	-291.57	40°09'08.822"N	104°47'06.673"W	1.68	
3755.00	0.550	71.460	3722.94	-203.33	191.81	-291.72	40°09'08.818"N	104°47'06.675"W	1.58	
3846.00	0.320	7.820	3813.93	-203.70	192.20	-291.28	40°09'08.822"N	104°47'06.669"W	0.55	
3937.00	0.420	307.290	3904.93	-204.16	192.65	-291.51	40°09'08.827"N	104°47'06.672"W	0.42	
4029.00	0.150	291.420	3996.93	-204.42	192.90	-291.89	40°09'08.829"N	104°47'06.677"W	0.30	
4120.00	1.210	125.870	4087.92	-203.88	192.38	-291.22	40°09'08.824"N	104°47'06.668"W	1.49	

REFERENCE WELLPATH IDENTIFICATION			
Operator	KERR-MCGEE OIL & GAS ONSHORE LP	Slot	SLOT#03 AGGREGATE STATE 14N-W16HZ (2389' FSL & 2110'FWL, SEC.09)
Area	COLORADO	Well	AGGREGATE STATE 14N-W16HZ
Field	WELD COUNTY (KERR MCGEE)	Wellbore	AGGREGATE STATE 14N-W16HZ AWB
Facility	SEC.09-T2N-R66W		

WELLPATH DATA (160 stations) † = interpolated/extrapolated station										
MD [ft]	Inclination [°]	Azimuth [°]	TVD [ft]	Vert Sect [ft]	North [ft]	East [ft]	Latitude	Longitude	DLS [°/100ft]	Comments
4297.00	0.540	132.630	4264.90	-202.14	190.72	-289.09	40°09'08.808"N	104°47'06.641"W	0.38	
4552.00	0.850	257.170	4519.89	-200.94	189.49	-290.05	40°09'08.796"N	104°47'06.653"W	0.49	
4637.00	0.680	339.830	4604.89	-201.31	189.82	-290.84	40°09'08.799"N	104°47'06.664"W	1.20	
4722.00	0.850	48.020	4689.88	-202.19	190.72	-290.54	40°09'08.808"N	104°47'06.660"W	1.02	
4891.00	1.080	64.190	4858.86	-203.62	192.25	-288.18	40°09'08.823"N	104°47'06.629"W	0.21	
5062.00	1.820	42.400	5029.80	-206.20	194.96	-284.90	40°09'08.850"N	104°47'06.587"W	0.53	
5146.00	0.670	59.230	5113.78	-207.38	196.19	-283.58	40°09'08.862"N	104°47'06.570"W	1.42	
5231.00	0.060	96.100	5198.78	-207.61	196.44	-283.10	40°09'08.864"N	104°47'06.564"W	0.73	
5316.00	0.300	42.620	5283.78	-207.76	196.60	-282.91	40°09'08.866"N	104°47'06.561"W	0.32	
5402.00	0.940	253.140	5369.78	-207.74	196.56	-283.43	40°09'08.865"N	104°47'06.568"W	1.40	
5487.00	0.760	241.100	5454.77	-207.32	196.09	-284.59	40°09'08.861"N	104°47'06.583"W	0.30	
5572.00	0.560	238.680	5539.76	-206.86	195.60	-285.44	40°09'08.856"N	104°47'06.594"W	0.24	
5657.00	0.190	220.600	5624.76	-206.56	195.28	-285.89	40°09'08.853"N	104°47'06.600"W	0.45	
5912.00	0.400	106.560	5879.76	-205.96	194.70	-285.31	40°09'08.847"N	104°47'06.592"W	0.20	
6168.00	0.500	44.140	6135.75	-206.44	195.25	-283.68	40°09'08.852"N	104°47'06.571"W	0.19	
6424.00	0.600	29.360	6391.74	-208.35	197.22	-282.24	40°09'08.872"N	104°47'06.553"W	0.07	
6509.00	0.650	7.600	6476.73	-209.21	198.08	-281.96	40°09'08.880"N	104°47'06.549"W	0.28	
6594.00	0.350	71.270	6561.73	-209.75	198.64	-281.65	40°09'08.886"N	104°47'06.545"W	0.69	
6679.00	0.790	212.740	6646.73	-209.35	198.23	-281.72	40°09'08.882"N	104°47'06.546"W	1.28	
6722.00	1.450	195.170	6689.72	-208.59	197.46	-282.02	40°09'08.874"N	104°47'06.550"W	1.71	
6764.00	4.140	183.510	6731.67	-206.57	195.43	-282.25	40°09'08.854"N	104°47'06.553"W	6.51	
6807.00	7.510	180.620	6774.44	-202.22	191.07	-282.38	40°09'08.811"N	104°47'06.555"W	7.86	
6849.00	10.430	184.570	6815.92	-195.70	184.54	-282.71	40°09'08.747"N	104°47'06.559"W	7.10	
6892.00	13.010	180.560	6858.90	-187.00	175.82	-283.07	40°09'08.660"N	104°47'06.563"W	6.29	
6934.00	16.150	178.820	6898.67	-176.44	165.25	-283.00	40°09'08.556"N	104°47'06.563"W	7.55	
6977.00	21.100	178.360	6939.40	-162.71	151.52	-282.65	40°09'08.420"N	104°47'06.558"W	11.52	
7019.00	26.000	178.040	6977.89	-145.93	134.75	-282.12	40°09'08.255"N	104°47'06.551"W	11.67	
7062.00	31.230	178.840	7015.63	-125.35	114.18	-281.57	40°09'08.051"N	104°47'06.544"W	12.20	
7104.00	36.050	179.290	7050.58	-102.10	90.92	-281.20	40°09'07.821"N	104°47'06.539"W	11.49	
7147.00	41.240	181.210	7084.16	-75.28	64.08	-281.34	40°09'07.556"N	104°47'06.541"W	12.39	
7190.00	46.080	179.050	7115.26	-45.63	34.40	-281.38	40°09'07.263"N	104°47'06.542"W	11.78	
7233.00	50.750	177.510	7143.79	-13.48	2.27	-280.40	40°09'06.945"N	104°47'06.529"W	11.19	
7275.00	55.180	177.040	7169.08	20.03	-31.21	-278.80	40°09'06.615"N	104°47'06.509"W	10.59	
7318.00	58.170	178.190	7192.70	55.96	-67.11	-277.32	40°09'06.260"N	104°47'06.489"W	7.30	
7360.00	63.120	179.010	7213.29	92.55	-103.69	-276.43	40°09'05.898"N	104°47'06.478"W	11.91	
7403.00	68.720	176.470	7230.83	131.79	-142.90	-274.86	40°09'05.511"N	104°47'06.458"W	14.09	
7445.00	73.120	179.440	7244.55	171.46	-182.55	-273.46	40°09'05.119"N	104°47'06.440"W	12.43	
7488.00	77.480	177.720	7255.46	213.04	-224.12	-272.42	40°09'04.708"N	104°47'06.426"W	10.85	
7531.00	78.640	179.320	7264.36	255.10	-266.17	-271.34	40°09'04.293"N	104°47'06.412"W	4.53	
7574.00	83.070	177.730	7271.19	297.54	-308.60	-270.24	40°09'03.873"N	104°47'06.398"W	10.93	
7596.00	84.730	177.550	7273.53	319.41	-330.46	-269.34	40°09'03.657"N	104°47'06.387"W	7.59	
7628.00†	86.901	176.891	7275.87	351.33	-362.33	-267.79	40°09'03.342"N	104°47'06.367"W	7.09	7" CASING POINT
7670.00	89.750	176.030	7277.09	393.29	-404.23	-265.20	40°09'02.928"N	104°47'06.333"W	7.09	
7761.00	88.890	175.150	7278.17	484.22	-494.95	-258.20	40°09'02.032"N	104°47'06.243"W	1.35	
7853.00	89.530	176.710	7279.44	576.17	-586.71	-251.68	40°09'01.125"N	104°47'06.159"W	1.83	

REFERENCE WELLPATH IDENTIFICATION			
Operator	KERR-MCGEE OIL & GAS ONSHORE LP	Slot	SLOT#03 AGGREGATE STATE 14N-W16HZ (2389' FSL & 2110'FWL, SEC.09)
Area	COLORADO	Well	AGGREGATE STATE 14N-W16HZ
Field	WELD COUNTY (KERR MCGEE)	Wellbore	AGGREGATE STATE 14N-W16HZ AWB
Facility	SEC.09-T2N-R66W		

WELLPATH DATA (160 stations)										
MD [ft]	Inclination [°]	Azimuth [°]	TVD [ft]	Vert Sect [ft]	North [ft]	East [ft]	Latitude	Longitude	DLS [°/100ft]	Comments
7945.00	89.590	177.230	7280.15	668.16	-678.57	-246.81	40°09'00.217"N	104°47'06.096"W	0.57	
8037.00	91.870	178.610	7278.98	760.14	-770.50	-243.47	40°08'59.309"N	104°47'06.053"W	2.90	
8128.00	91.410	177.930	7276.37	851.10	-861.42	-240.73	40°08'58.410"N	104°47'06.018"W	0.90	
8219.00	91.630	178.150	7273.96	942.06	-952.33	-237.62	40°08'57.512"N	104°47'05.978"W	0.34	
8311.00	90.700	177.680	7272.09	1034.04	-1044.25	-234.27	40°08'56.604"N	104°47'05.935"W	1.13	
8403.00	90.580	177.180	7271.06	1126.04	-1136.15	-230.15	40°08'55.695"N	104°47'05.882"W	0.56	
8586.00	89.260	177.460	7271.32	1309.03	-1318.95	-221.59	40°08'53.889"N	104°47'05.772"W	0.74	
8678.00	89.620	177.180	7272.21	1401.02	-1410.84	-217.29	40°08'52.981"N	104°47'05.716"W	0.50	
8770.00	90.460	177.700	7272.15	1493.02	-1502.75	-213.18	40°08'52.073"N	104°47'05.663"W	1.07	
8954.00	91.010	176.850	7269.79	1677.00	-1686.53	-204.43	40°08'50.257"N	104°47'05.551"W	0.55	
9046.00	90.980	178.380	7268.19	1768.98	-1778.43	-200.60	40°08'49.348"N	104°47'05.501"W	1.66	
9138.00	90.730	177.910	7266.82	1860.97	-1870.37	-197.63	40°08'48.440"N	104°47'05.463"W	0.58	
9321.00	89.260	177.280	7266.84	2043.96	-2053.20	-189.95	40°08'46.633"N	104°47'05.364"W	0.87	
9412.00	90.580	178.630	7266.96	2134.95	-2144.14	-186.70	40°08'45.734"N	104°47'05.322"W	2.07	
9595.00	88.950	177.810	7267.71	2317.94	-2327.04	-181.02	40°08'43.927"N	104°47'05.249"W	1.00	
9687.00	89.010	177.930	7269.35	2409.92	-2418.97	-177.60	40°08'43.019"N	104°47'05.205"W	0.15	
9778.00	88.110	177.440	7271.64	2500.89	-2509.86	-173.92	40°08'42.120"N	104°47'05.158"W	1.13	
9869.00	89.320	178.580	7273.68	2591.87	-2600.78	-170.76	40°08'41.222"N	104°47'05.117"W	1.83	
9961.00	90.830	179.490	7273.56	2683.84	-2692.76	-169.21	40°08'40.313"N	104°47'05.097"W	1.92	
10144.00	91.500	180.000	7269.84	2866.68	-2875.72	-168.40	40°08'38.505"N	104°47'05.086"W	0.46	
10229.00	90.000	178.330	7268.72	2951.64	-2960.70	-167.16	40°08'37.665"N	104°47'05.070"W	2.64	
10314.00	89.380	178.100	7269.18	3036.64	-3045.66	-164.51	40°08'36.826"N	104°47'05.036"W	0.78	
10399.00	88.640	178.210	7270.65	3121.62	-3130.60	-161.78	40°08'35.986"N	104°47'05.001"W	0.88	
10485.00	88.420	177.740	7272.86	3207.59	-3216.52	-158.74	40°08'35.137"N	104°47'04.962"W	0.60	
10570.00	89.590	177.300	7274.33	3292.58	-3301.42	-155.06	40°08'34.298"N	104°47'04.915"W	1.47	
10655.00	90.460	177.830	7274.30	3377.57	-3386.35	-151.45	40°08'33.459"N	104°47'04.868"W	1.20	
10740.00	90.000	177.230	7273.96	3462.57	-3471.27	-147.79	40°08'32.620"N	104°47'04.821"W	0.89	
10825.00	90.060	177.010	7273.91	3547.57	-3556.16	-143.52	40°08'31.781"N	104°47'04.766"W	0.27	
10910.00	89.900	176.800	7273.94	3632.56	-3641.03	-138.93	40°08'30.942"N	104°47'04.707"W	0.31	
10995.00	90.090	176.770	7273.95	3717.55	-3725.90	-134.16	40°08'30.103"N	104°47'04.645"W	0.23	
11080.00	90.210	176.410	7273.73	3802.53	-3810.75	-129.10	40°08'29.265"N	104°47'04.580"W	0.45	
11165.00	90.300	176.660	7273.35	3887.51	-3895.59	-123.97	40°08'28.426"N	104°47'04.514"W	0.31	
11250.00	89.470	176.410	7273.52	3972.50	-3980.44	-118.83	40°08'27.588"N	104°47'04.448"W	1.02	
11335.00	89.130	175.870	7274.56	4057.46	-4065.24	-113.11	40°08'26.750"N	104°47'04.374"W	0.75	
11420.00	89.440	176.140	7275.62	4142.41	-4150.02	-107.19	40°08'25.912"N	104°47'04.298"W	0.48	
11505.00	90.030	177.090	7276.01	4227.39	-4234.87	-102.17	40°08'25.074"N	104°47'04.234"W	1.32	
11590.00	90.490	178.480	7275.63	4312.39	-4319.81	-98.88	40°08'24.234"N	104°47'04.191"W	1.72	
11675.00	90.300	177.860	7275.04	4397.39	-4404.76	-96.17	40°08'23.395"N	104°47'04.156"W	0.76	
11845.00	89.350	178.630	7275.56	4567.37	-4574.68	-90.96	40°08'21.716"N	104°47'04.089"W	0.72	
11930.00	90.360	178.560	7275.77	4652.36	-4659.65	-88.88	40°08'20.876"N	104°47'04.062"W	1.19	
12015.00	91.160	178.530	7274.65	4737.35	-4744.61	-86.72	40°08'20.036"N	104°47'04.035"W	0.94	
12100.00	90.890	178.020	7273.13	4822.33	-4829.56	-84.16	40°08'19.197"N	104°47'04.002"W	0.68	
12186.00	90.490	177.390	7272.09	4908.32	-4915.49	-80.72	40°08'18.348"N	104°47'03.957"W	0.87	
12271.00	90.000	176.800	7271.73	4993.31	-5000.38	-76.41	40°08'17.509"N	104°47'03.902"W	0.90	
12356.00	89.410	176.640	7272.16	5078.30	-5085.23	-71.55	40°08'16.670"N	104°47'03.839"W	0.72	

REFERENCE WELLPATH IDENTIFICATION			
Operator	KERR-MCGEE OIL & GAS ONSHORE LP	Slot	SLOT#03 AGGREGATE STATE 14N-W16HZ (2389' FSL & 2110'FWL, SEC.09)
Area	COLORADO	Well	AGGREGATE STATE 14N-W16HZ
Field	WELD COUNTY (KERR MCGEE)	Wellbore	AGGREGATE STATE 14N-W16HZ AWB
Facility	SEC.09-T2N-R66W		

WELLPATH DATA (160 stations)										
MD [ft]	Inclination [°]	Azimuth [°]	TVD [ft]	Vert Sect [ft]	North [ft]	East [ft]	Latitude	Longitude	DLS [°/100ft]	Comments
12441.00	89.560	177.630	7272.93	5163.29	-5170.12	-67.30	40°08'15.831"N	104°47'03.785"W	1.18	
12526.00	89.560	178.700	7273.58	5248.29	-5255.08	-64.58	40°08'14.992"N	104°47'03.749"W	1.26	
12611.00	90.240	179.480	7273.73	5333.26	-5340.06	-63.23	40°08'14.152"N	104°47'03.732"W	1.22	
12696.00	90.330	179.100	7273.31	5418.23	-5425.06	-62.17	40°08'13.312"N	104°47'03.719"W	0.46	
12781.00	90.430	178.990	7272.74	5503.20	-5510.04	-60.76	40°08'12.472"N	104°47'03.700"W	0.17	
12867.00	90.150	178.890	7272.31	5589.18	-5596.03	-59.17	40°08'11.623"N	104°47'03.680"W	0.35	
12952.00	89.690	178.340	7272.43	5674.17	-5681.00	-57.11	40°08'10.783"N	104°47'03.653"W	0.84	
13037.00	90.770	178.020	7272.09	5759.16	-5765.96	-54.41	40°08'09.943"N	104°47'03.619"W	1.33	
13122.00	91.630	177.040	7270.31	5844.14	-5850.86	-50.75	40°08'09.104"N	104°47'03.571"W	1.53	
13207.00	91.380	177.010	7268.07	5929.11	-5935.71	-46.34	40°08'08.266"N	104°47'03.515"W	0.30	
13292.00	90.830	177.420	7266.43	6014.09	-6020.60	-42.21	40°08'07.427"N	104°47'03.461"W	0.81	
13377.00	89.810	178.250	7265.96	6099.08	-6105.53	-39.00	40°08'06.588"N	104°47'03.420"W	1.55	
13462.00	89.380	178.470	7266.56	6184.08	-6190.50	-36.57	40°08'05.748"N	104°47'03.389"W	0.57	
13547.00	90.240	177.920	7266.84	6269.07	-6275.45	-33.89	40°08'04.909"N	104°47'03.354"W	1.20	
13632.00	89.600	177.370	7266.96	6354.07	-6360.38	-30.40	40°08'04.069"N	104°47'03.309"W	0.99	
13717.00	89.190	177.160	7267.86	6439.06	-6445.28	-26.34	40°08'03.230"N	104°47'03.257"W	0.54	
13803.00	90.240	177.730	7268.29	6525.06	-6531.19	-22.51	40°08'02.381"N	104°47'03.208"W	1.39	
13888.00	89.930	178.180	7268.16	6610.06	-6616.13	-19.48	40°08'01.542"N	104°47'03.169"W	0.64	
13973.00	88.480	177.270	7269.34	6695.05	-6701.06	-16.10	40°08'00.703"N	104°47'03.125"W	2.01	
14058.00	89.160	176.750	7271.09	6780.02	-6785.92	-11.67	40°07'59.864"N	104°47'03.068"W	1.01	
14143.00	89.840	177.640	7271.83	6865.01	-6870.82	-7.51	40°07'59.025"N	104°47'03.015"W	1.32	
14228.00	89.410	177.280	7272.39	6950.01	-6955.73	-3.74	40°07'58.186"N	104°47'02.966"W	0.66	
14313.00	88.300	176.840	7274.09	7034.99	-7040.60	0.62	40°07'57.347"N	104°47'02.910"W	1.40	
14402.00	87.730	175.830	7277.17	7123.91	-7129.36	6.30	40°07'56.470"N	104°47'02.837"W	1.30	LAST BHI MWD+IFR SURVEY
14456.00	87.730	175.830	7279.31	7177.83	-7183.18	10.22	40°07'55.938"N	104°47'02.786"W	0.00	PROJECTION TO BIT

HOLE & CASING SECTIONS - Ref Wellbore: AGGREGATE STATE 14N-W16HZ AWB Ref Wellpath: AGGREGATE STATE 14N-W16HZ AWP									
String/Diameter	Start MD [ft]	End MD [ft]	Interval [ft]	Start TVD [ft]	End TVD [ft]	Start N/S [ft]	Start E/W [ft]	End N/S [ft]	End E/W [ft]
13.5in Open Hole	16.00	1044.00	1028.00	16.00	1043.97	0.00	0.00	4.62	-1.74
9.625in Casing Surface	16.00	1034.00	1018.00	16.00	1033.97	0.00	0.00	4.65	-1.76
8.75in Open Hole	1044.00	7640.00	6596.00	1043.97	7276.43	4.62	-1.74	-374.30	-267.12
7in Casing Intermediate	16.00	7628.00	7612.00	16.00	7275.87	0.00	0.00	-362.33	-267.79
6.125in Open Hole	7640.00	14456.00	6816.00	7276.43	7279.31	-374.30	-267.12	-7183.18	10.22

REFERENCE WELLPATH IDENTIFICATION			
Operator	KERR-MCGEE OIL & GAS ONSHORE LP	Slot	SLOT#03 AGGREGATE STATE 14N-W16HZ (2389' FSL & 2110'FWL, SEC.09)
Area	COLORADO	Well	AGGREGATE STATE 14N-W16HZ
Field	WELD COUNTY (KERR MCGEE)	Wellbore	AGGREGATE STATE 14N-W16HZ AWB
Facility	SEC.09-T2N-R66W		

TARGETS									
Name	MD [ft]	TVD [ft]	North [ft]	East [ft]	Grid East [US ft]	Grid North [US ft]	Latitude	Longitude	Shape
SE-C.16-T2N-R66W SECTION LINES		0.00	0.00	-27.41	3200073.31	1298996.37	40°09'06.923"N	104°47'03.271"W	polygon
SEC.09-T2N-R66W HARD LINES (460' SETBACKS)		0.00	0.00	-27.41	3200073.31	1298996.37	40°09'06.923"N	104°47'03.271"W	polygon
SEC.09-T2N-R66W SECTION LINES		0.00	0.00	-27.41	3200073.31	1298996.37	40°09'06.923"N	104°47'03.271"W	polygon
AGGREGATE STATE 14N-W16HZ BHL (460'FSL & 2130'FWL, SEC.16) REV-2		7282.00	-7208.71	11.54	3200170.45	1291788.53	40°07'55.686"N	104°47'02.769"W	point
AGGREGATE STATE 14N-W16HZ BHL ON PLAT (460'FSL & 2110'FWL, SEC.16) REV-1		7282.00	-7208.71	-9.54	3200149.37	1291788.36	<b>40°07'55.686"N</b>	<b>104°47'03.041"W</b>	point
AGGREGATE STATE 14N-W16HZ LAND BOX		7282.00	0.00	0.00	3200100.72	1298996.60	40°09'06.923"N	104°47'02.918"W	polygon

WELLPATH COMPOSITION - Ref Wellbore: AGGREGATE STATE 14N-W16HZ AWB    Ref Wellpath: AGGREGATE STATE 14N-W16HZ AWP				
Start MD [ft]	End MD [ft]	Positional Uncertainty Model	Log Name/Comment	Wellbore
16.00	863.00	Generic gyro - continuous (Standard)	MS ENERGY GYRO SURVEYS <116-863>	AGGREGATE STATE 14N-W16HZ AWB
863.00	7596.00	NaviTrak (MAGCORR,IFR)	BHI MWD+IFR SURVEYS 8 3/4" HOLE <1084-7596>	AGGREGATE STATE 14N-W16HZ AWB
7596.00	14402.00	NaviTrak (MAGCORR,IFR)	BHI MWD+IFR SURVEYS 6 1/8" HOLE <7670-14402>	AGGREGATE STATE 14N-W16HZ AWB
14402.00	14456.00	Blind Drilling (std)	Projection to bit	AGGREGATE STATE 14N-W16HZ AWB

REFERENCE WELLPATH IDENTIFICATION			
Operator	KERR-MCGEE OIL & GAS ONSHORE LP	Slot	SLOT#03 AGGREGATE STATE 14N-W16HZ (2389' FSL & 2110'FWL, SEC.09)
Area	COLORADO	Well	AGGREGATE STATE 14N-W16HZ
Field	WELD COUNTY (KERR MCGEE)	Wellbore	AGGREGATE STATE 14N-W16HZ AWB
Facility	SEC.09-T2N-R66W		

WELLPATH COMMENTS				
MD [ft]	Inclination [°]	Azimuth [°]	TVD [ft]	Comment
16.00	0.000	62.170	16.00	TIE ON
116.00	0.630	62.170	116.00	BEGIN GYRO SURVEYS
863.00	0.310	290.110	862.97	TIE ONTO GYRO SURVEYS
1084.00	0.290	138.540	1083.97	BEGIN BHI MWD+IFR SURVEYS
7628.00	86.901	176.891	7275.87	7" CASING POINT
14402.00	87.730	175.830	7277.17	LAST BHI MWD+IFR SURVEY
14456.00	87.730	175.830	7279.31	PROJECTION TO BIT