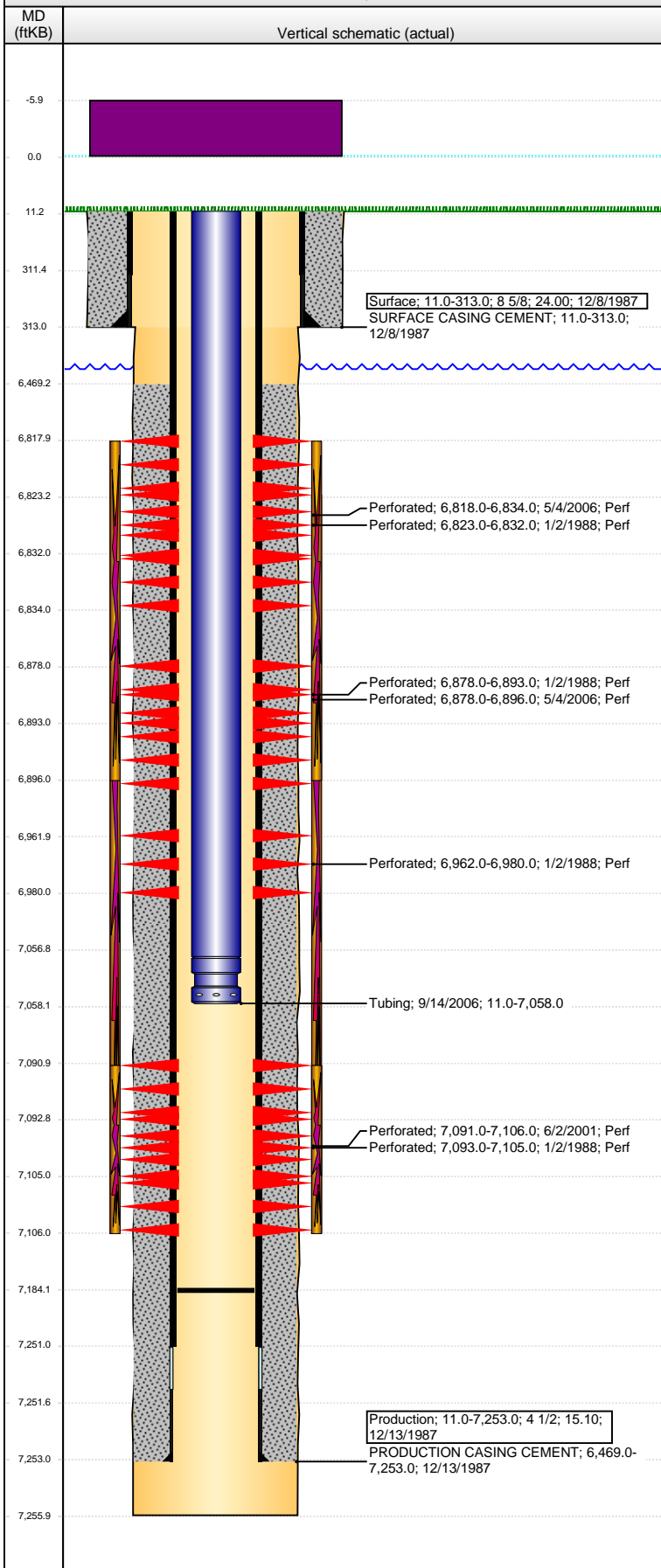


Well Name: LJS R H01-08

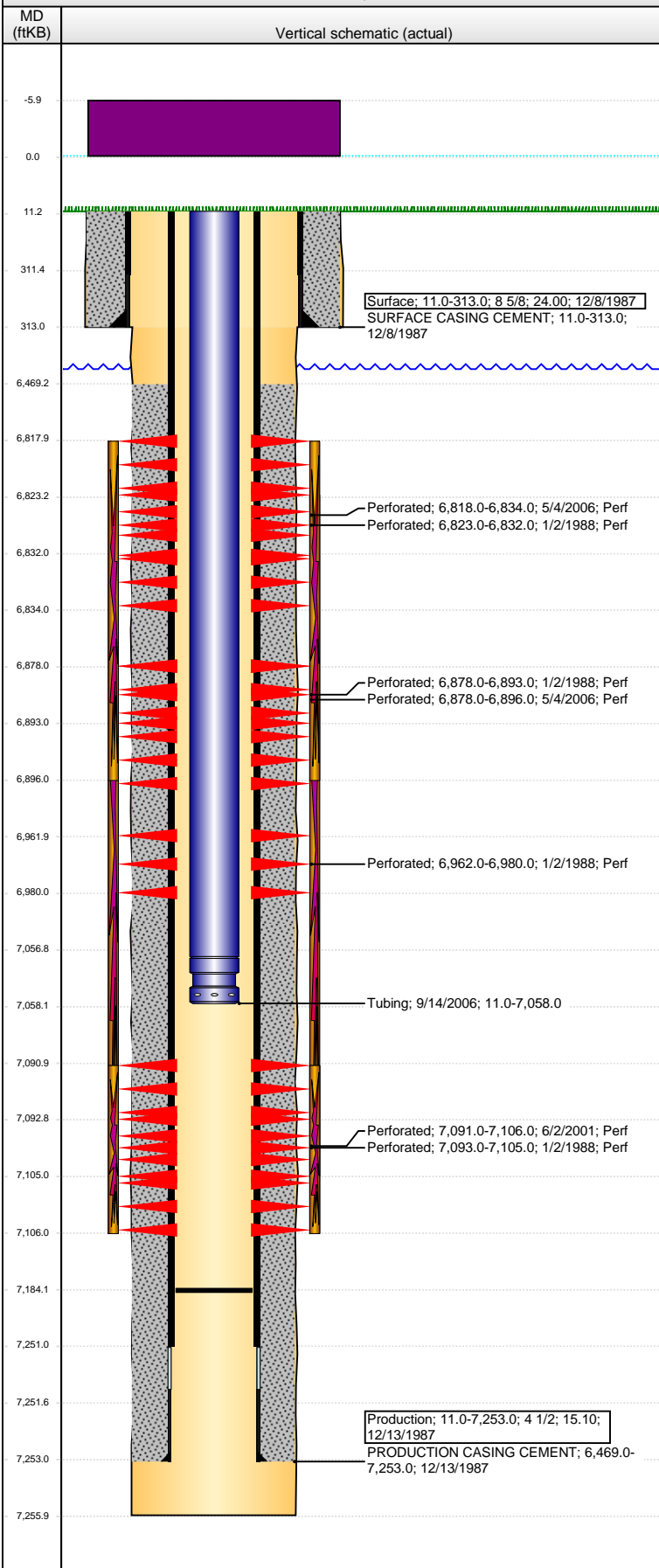
VERTICAL - ORIGINAL HOLE, 5/8/2014 9:26:01 AM



Well Header			
API	Business Unit	District	Well Config
05-123-13730	WATTENBERG	15	VERTICAL
Original KB Elevation (ft)	KB - GL / MSL (ftKB)	Spud Date	P & A Date
4,866.00	11.00	12/8/1987	
Comment			
MISSING ORIGINAL DRILL REPORTS; USED INFO FROM STATE AND SCHEMATICS			
DISCREPANCY: DR RPT/SCHEMATIC SURF CSG @ 313'; ST RPT SURF CSG @ 302'			
Directions To Well			
Congressional Location			
Quarter 1	Quarter 2	Quarter 3	Quarter 4
		SE	NE
Section	Township	Twnshp N...	Range
1	3 N		65 W
Bottom Hole Location			
North-South Distance (ft)	From N or S Line	East-West Distance (ft)	From E or W Line
Plug Back Total Depths			
Date	Depth (ftKB)	Method	Com
12/30/1987	7,143.0	CASED HOLE LOG	DEPTH LOGGER ON CBL
9/1/1998	7,239.0	TAG	CLEAN OUT TO LAND TUBING
9/14/2006	7,184.0	TAG	CLEAN OUT TO LAND TUBING
Wellbore Sections			
Section Des	Size (in)	Act Top, MD (ftKB)	Act Btm, MD (ftKB)
SURFACE	12 1/4	11.0	313.0
PRODUCTION	7 7/8	313.0	7,256.0
Zone Statuses			
Zone Name	Status Date	Status	Job
NIOBRARA	1/5/1988	PR	DRILLING/COMPLETION - ORIGINAL, 12/8/1987 00:00
NIOBRARA	6/2/2006	PR	RE-FRAC, 5/2/2006 00:00
NIOBRARA	9/18/2006	PR	RE-FRAC, 5/2/2006 00:00
CODELL	1/5/1988	PR	DRILLING/COMPLETION - ORIGINAL, 12/8/1987 00:00
CODELL	6/24/2001	PR	RE-FRAC, 5/30/2001 00:00
CODELL	10/19/2004	PR	TRI-FRAC, 10/4/2004 00:00
CODELL	5/2/2006	SI	RE-FRAC, 5/2/2006 00:00
CODELL	9/18/2006	PR	RE-FRAC, 5/2/2006 00:00
Casing Strings			
Surface, 313.0ftKB			
Casing Description	Run Date	OD (in)	Wt/Len (L...)
Surface	12/8/1987	8 5/8	24.00
Grade	Top, MD (ft...)	MD (ftKB)	
	11.0	313.0	
Production, 7,253.0ftKB			
Casing Description	Run Date	OD (in)	Wt/Len (L...)
Production	12/13/1987	4 1/2	15.10
Grade	Top, MD (ft...)	MD (ftKB)	
	11.0	7,253.0	
Cement			
Description	Top Depth (ftKB)	Bottom Depth (ftKB)	
SURFACE CASING CEMENT	11.0	313.0	
Description	Top Depth (ftKB)	Bottom Depth (ftKB)	
PRODUCTION CASING CEMENT	6,469.0	7,253.0	
Tubing Components			
Item Des	OD (in)	Wt (lb/ft)	Grade
EUE 8rd Tubing	2 3/8		
Notched Seating Nipple	2 3/8	1.10	
Jts	Len (ft)	Btm (ftKB)	Btm (TVD) (ftKB)
223	7,045.90	7,056.9	
1	1.10	7,058.0	
Perforation Data			
Zone	Bnch/St g	Entered Shot Total	Top (ftKB)
NIOBRARA, ORIGINAL HOLE	A	96	6,818.00
NIOBRARA, ORIGINAL HOLE	A	2	6,823.00
NIOBRARA, ORIGINAL HOLE	B	4	6,878.00
NIOBRARA, ORIGINAL HOLE	B	108	6,878.00
NIOBRARA, ORIGINAL HOLE	C	2	6,962.00
CODELL, ORIGINAL HOLE		60	7,091.00
CODELL, ORIGINAL HOLE		8	7,093.00
			Btm (ftKB)
			6,834.00
			6,832.00
			6,893.00
			6,896.00
			6,980.00
			7,106.00
			7,105.00
			Date
			5/4/2006
			1/2/1988
			1/2/1988
			5/4/2006
			1/2/1988
			6/2/2001
			1/2/1988

Well Name: LJS R H01-08

VERTICAL - ORIGINAL HOLE, 5/8/2014 9:26:02 AM



Stimulations & Treatments

Date	Zone	Primary Job Type
1/4/1988	NIORARA-CODELL, ORIGINAL HOLE	DRILLING/COMPLETION - ORIGINAL
Comment: LIMITED ENTRY FRAC		
6/19/2001	CODELL, ORIGINAL HOLE	RE-FRAC
Comment:		
10/11/2004	CODELL, ORIGINAL HOLE	TRI-FRAC
Comment:		
6/1/2006	NIORARA, ORIGINAL HOLE	RE-FRAC
Comment:		

Other In Hole

Run Date	Des	OD (in)	Top (ftKB)	Btm (ftKB)

Logs

Date	Type	Top, MD (ftKB)	Btm, MD (ftKB)
12/12/1987	INDUCTION	310.0	7,238.0
12/30/1987	CEMENT BOND	6,400.0	7,140.0
9/18/2013	GYRO	11.0	7,000.0