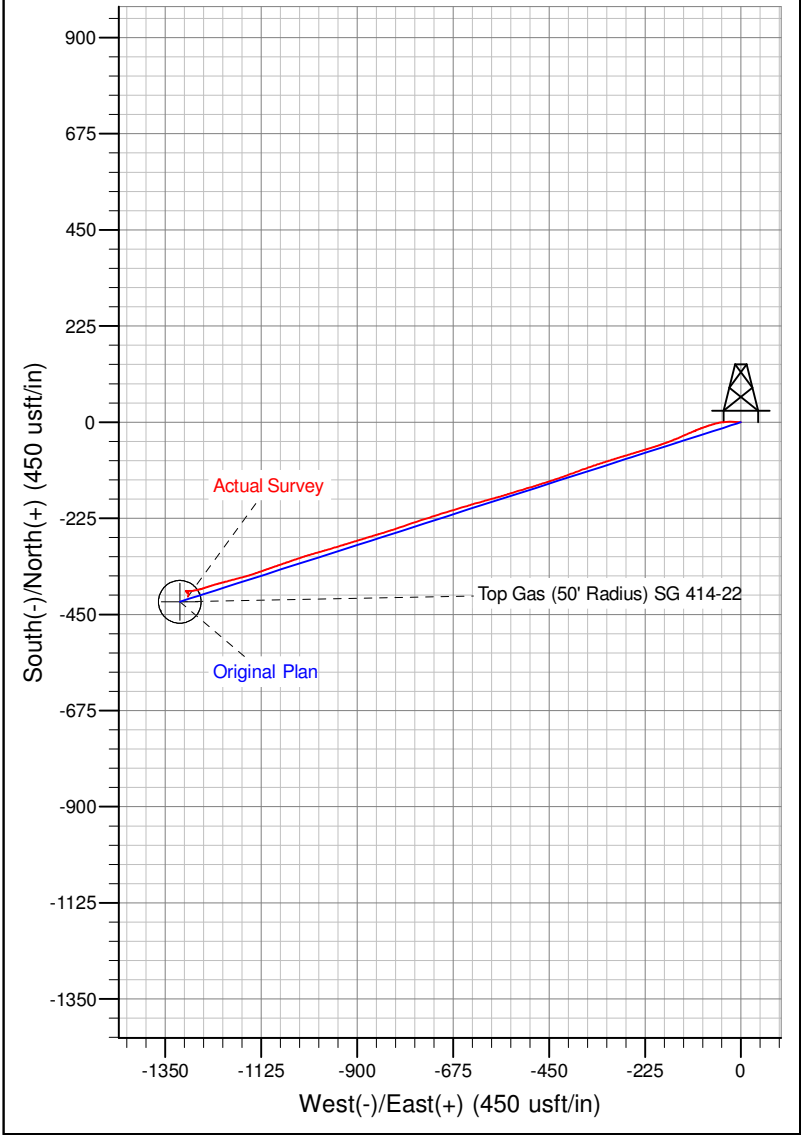
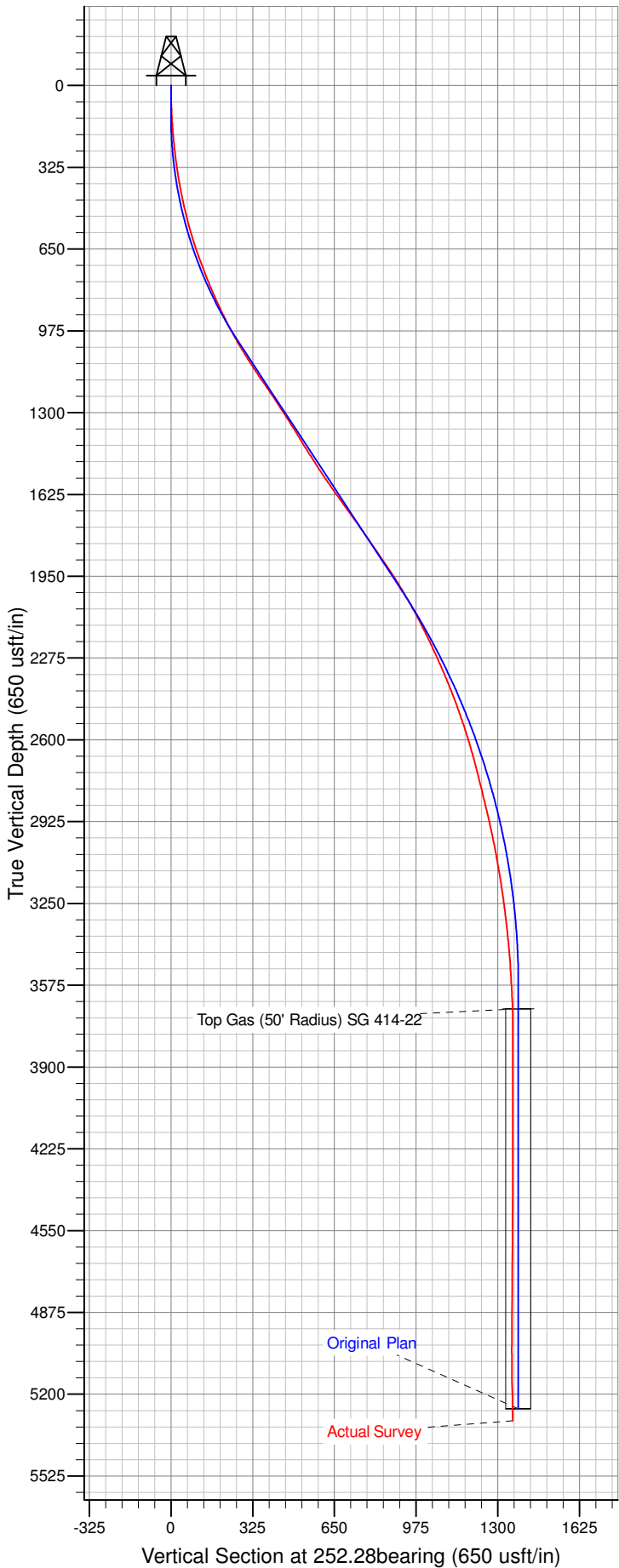




Well Name: SG 414-22
 Surface Location: SG 24-22 Pad
 North American Datum 1983 , US State Plane 1983 , Colorado Central Zone
 Ground Elevation: 5248.0
 +N/-S +E/-W Northing Easting Latitude Longitude Slot
 0.0 0.0 1587467.18 2265498.02 39.41750 -108.10022 A4
 KELLY BUSHING @ 5272.0usft (H&P 318 (24' RKB) kjs)



M

Azimuths to True North
 Magnetic North: 10.03°

Magnetic Field
 Strength: 51918.7snT
 Dip Angle: 65.58°
 Date: 3/29/2014
 Model: IGRF2010

Detailed description: A compass rose diagram with a vertical arrow pointing up labeled 'M'. The diagram is enclosed in a box with the text 'Azimuths to True North' and 'Magnetic North: 10.03°'. Below the diagram, the text reads: 'Magnetic Field Strength: 51918.7snT', 'Dip Angle: 65.58°', 'Date: 3/29/2014', and 'Model: IGRF2010'.