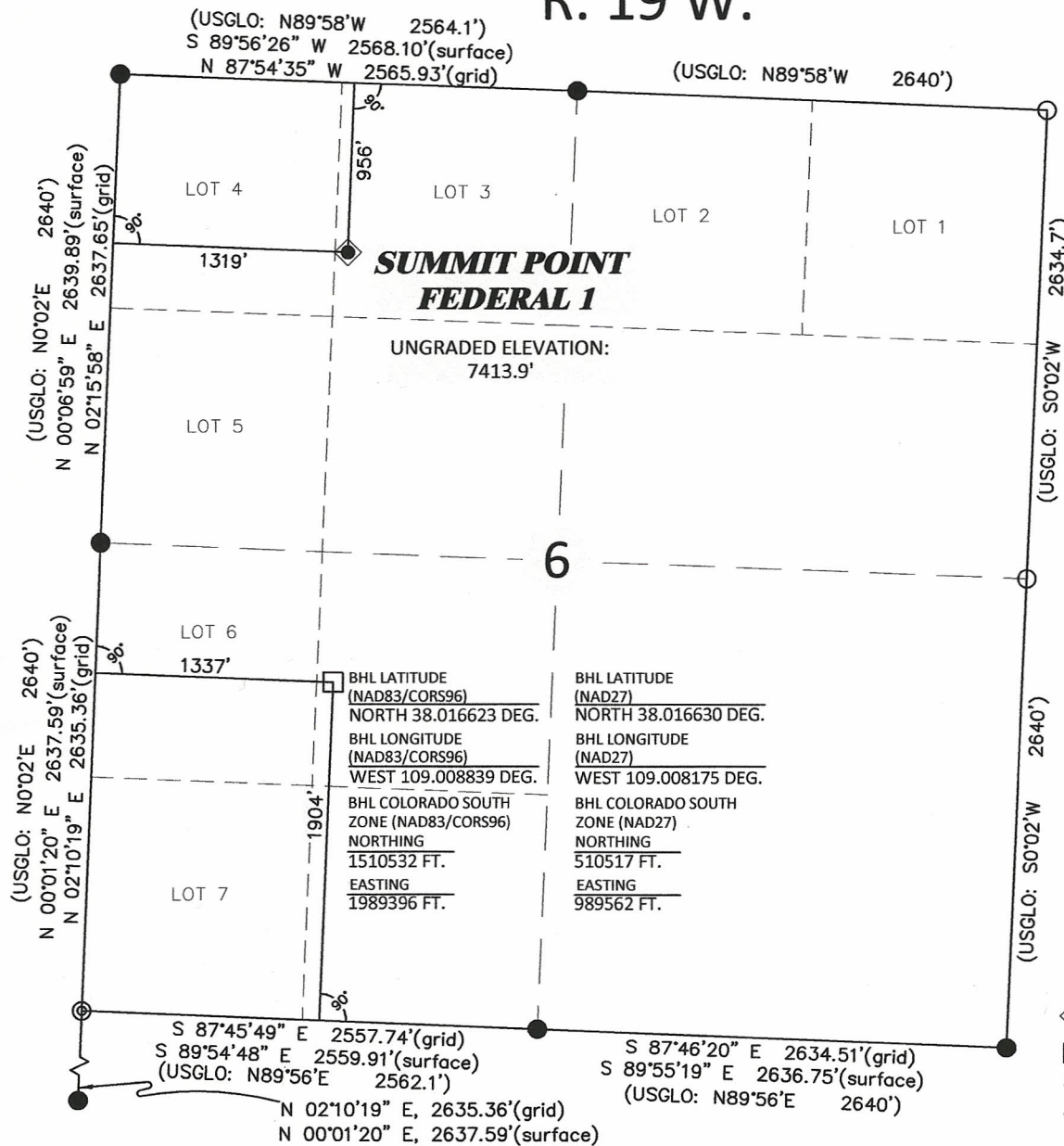


R. 19 W.



SCALE: 1"=1000'
0' 250' 500' 1000'

T. 43 N.

SURFACE HOLE LOCATION

SHL LATITUDE
(NAD83/CORS96)
NORTH 38.023266 DEG.
SHL LONGITUDE
(NAD83/CORS96)
WEST 109.008889 DEG.
SHL COLORADO SOUTH
ZONE (NAD83/CORS96)
NORTHING
1512949.98 FT.
EASTING
1989472.53 FT.

SHL LATITUDE (NAD27)
NORTH 38.023273 DEG.
SHL LONGITUDE (NAD27)
WEST 109.008225 DEG.
SHL COLORADO
SOUTH ZONE (NAD27)
NORTHING
512934.51 FT.
EASTING
989638.54 FT.

LEGEND

- ◆ SURFACE HOLE LOCATION
- BOTTOM HOLE LOCATION
- CALCULATED CORNER
- FOUND CORNER MONUMENT, AS NOTED

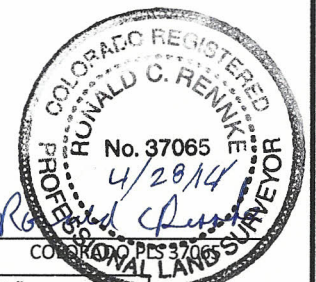
SURVEYOR'S STATEMENT

I, Ronald C. Rennke, an employee and agent for William H. Smith & Associates P.C., Inc. state the plat hereon is a representation of a field survey made under my authority of the shown SUMMIT POINT FEDERAL 1 surface hole location, being staked on the ground as shown hereon on December 10, 2011.

NOTES

- (1.) Basis of Datum is the Colorado State Plane Coordinate System, South Zone, NAD83/CORS96 (horizontal) & NAVD88 (vertical) derived from OPUS solution.
- (2.) The Basis of Bearings for this survey is derived from OPUS solution & referenced to the north line of the shown NW4 of Section 6 monumented as shown and bearing N 87°57'35" W.
- (3.) Current land use is native, non-crop & rangeland.
- (4.) Improvements exist within 400' radius, see exhibit 2 for details.
- (5.) All GPS observations for the shown well location are in compliance with COGCC rule no. 215.
- (6.) GPS Operator: Ron Rennke on December 10, 2011: PDOP = 2.8
- (7.) CONVERGENCE ANGLE FROM Grid North to Geodetic North = 2°08' 59"
- (8.) COMBINED SCALE FACTOR from Grid Distances to Surface Distances = 1.0008479

Notice: In accordance with Colorado State Law, any legal action based upon any defect in this survey plat must commence within three (3) years after first discovery of such defect. In no event may any action based upon any defect in this survey plat be commenced more than ten (10) years from the date of certification shown hereon.



WILLIAM H. SMITH & ASSOCIATES P.C.
SURVEYING CONSULTANTS

550 EAST SECOND NORTH PHONE: 307-875-3638
GREEN RIVER, WY 307-875-3639
www.whsmithpc.com

PLAT OF DRILLING LOCATION
PATARA OIL & GAS, LLC
SUMMIT POINT FEDERAL 1 - NE4NW4 SECTION 6

956' F/NL & 1319' F/WL, SECTION 6
T. 43 N., R. 19 W., NEW MEXICO P.M.
SAN MIGUEL COUNTY, COLORADO

JOB NO: 2011900.004

REVISIONS: Add PDOP reading in
Note 6. 4/28/2014 rr

DATE DRAWN - BY: 12/23/11 - rcr

SCALE: 1" = 1000'

EXHIBIT 1

PAGE 1 OF 1