



TELEPHONE  
(307) 265-7121

**Pengo Wireline Services of Casper, Inc.**

CEMENT BOND - GAMMA RAY  
UDL  
CCL

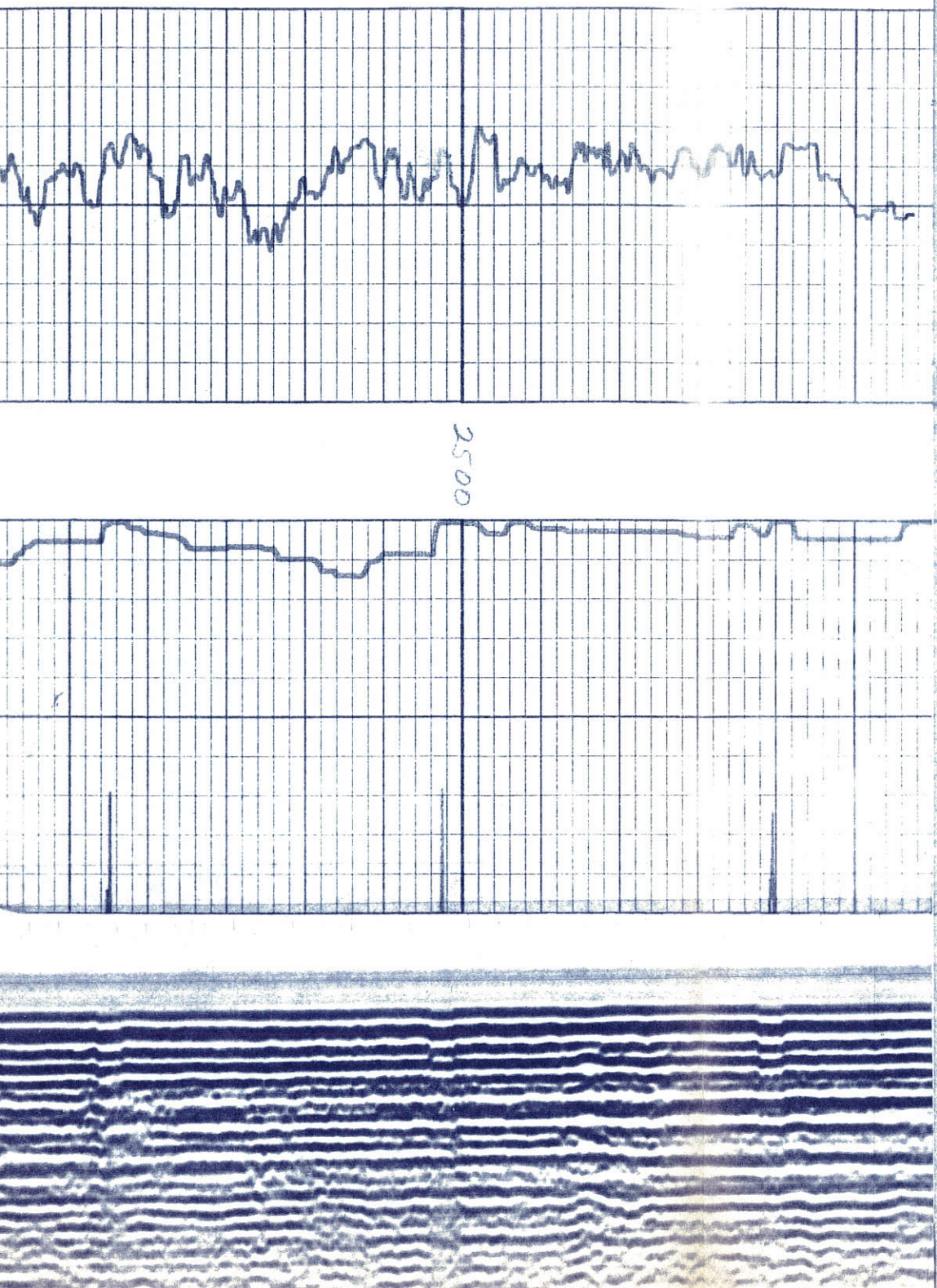
FILING NO.		COMPANY <i>Bellweather</i>		WELL <i>Kissler-Amen 1-25</i>		FIELD <i>Bracewell</i>		COUNTY <i>Weld</i>		LOCATION: STATE <i>CO.</i>		SEC. <i>25</i> TWP. <i>6N</i> RGE. <i>66W</i>		PERMANENT DATUM: <i>G.L.</i>		LOG MEASURED FROM		DRILLING MEASURED FROM					
Run No.		Date		Type Log		Depth-Driller		Depth-Logger		Bottom logged interval		Top logged interval		Type fluid in hole		Max rec. temp., deg. F.		Operating rig time		Recorded by		Witnessed by	
5-11-84		ONE		G/R Cement Bond Log		6180 PS		6006'		3004'		5600'		FORMATION		3 hrs		G. Ford		S. Ford		S. Ford	
Run No.		Bil		From		To		Size		Wgt.		From		To		Casing Record		Liner		From		To	
4.5		1.6		5085		TD		Size		Wgt.		From		To						From		To	

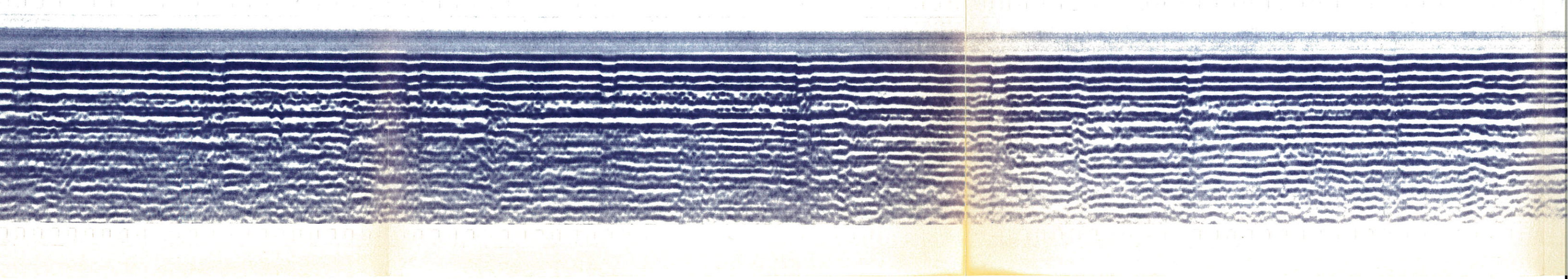
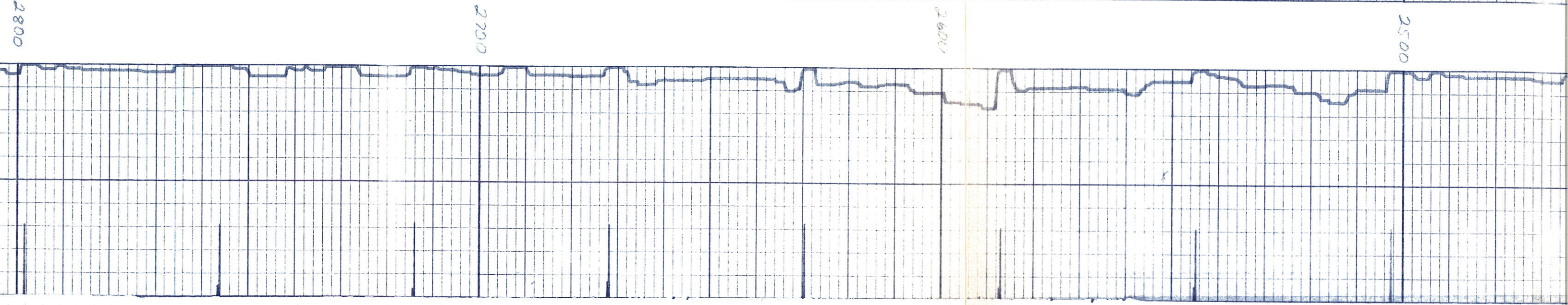
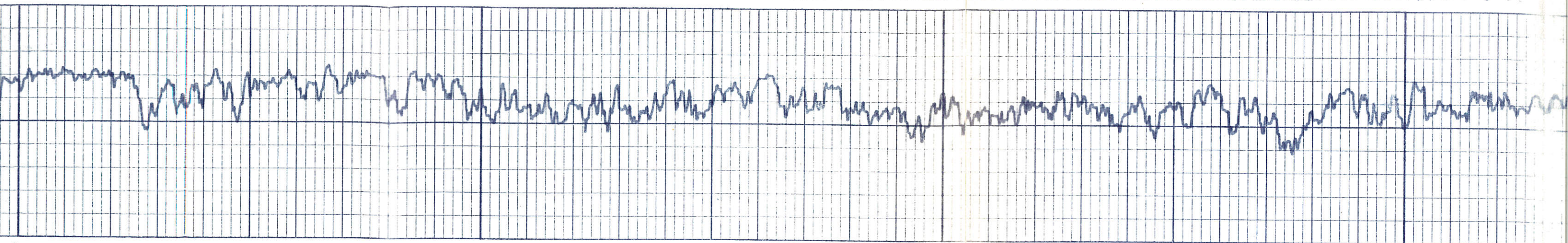
Notice: All interpretations are opinions based on inferences from electrical or other measurements and we cannot, and do not, guarantee the accuracy or correctness of any interpretations, and we shall not, except in the case of gross or willful negligence on our part, be liable or responsible for any loss, costs, damages or expenses incurred or sustained by anyone by resulting from any interpretation made by one of our officers, agents or employees. These interpretations are also subject to our General Terms and Conditions as set out in our current Price Schedule

Pengo Wireline Services or Casper, Inc.

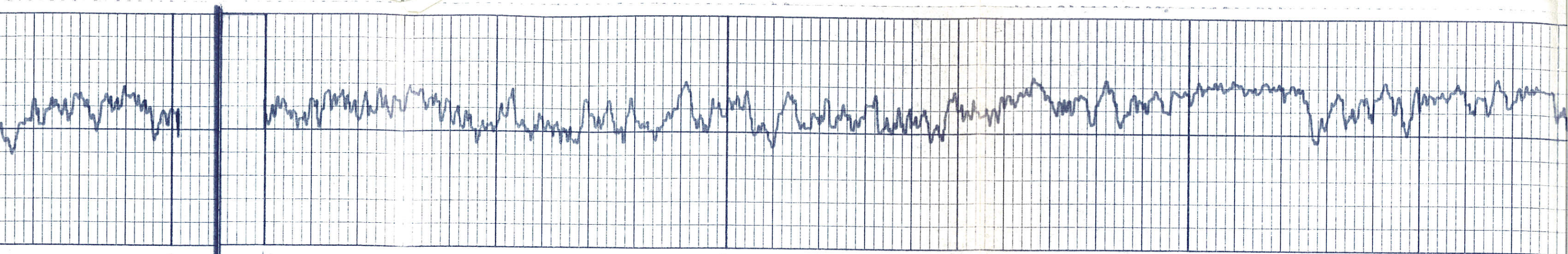
Remarks:

PIPE BOND  
INCREASE  
←





2800 2700 2600 2500

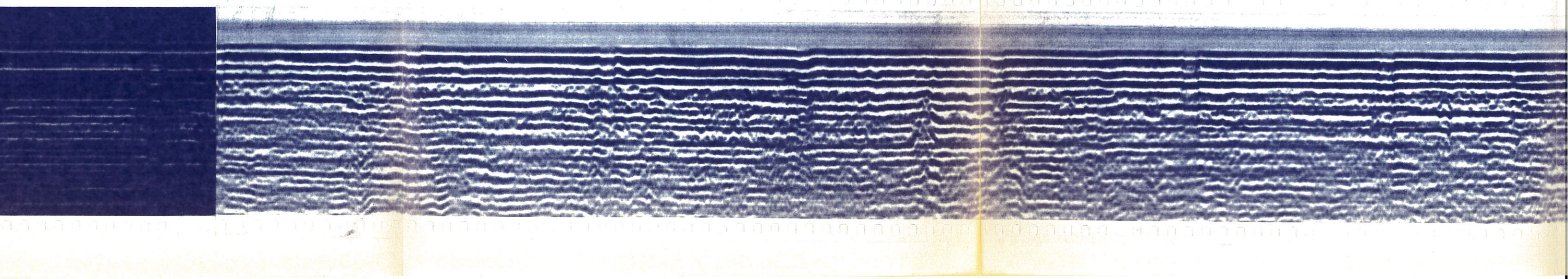
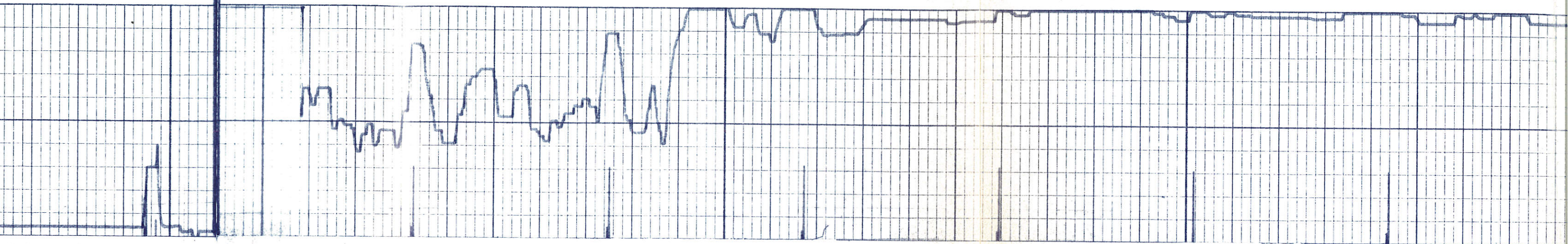


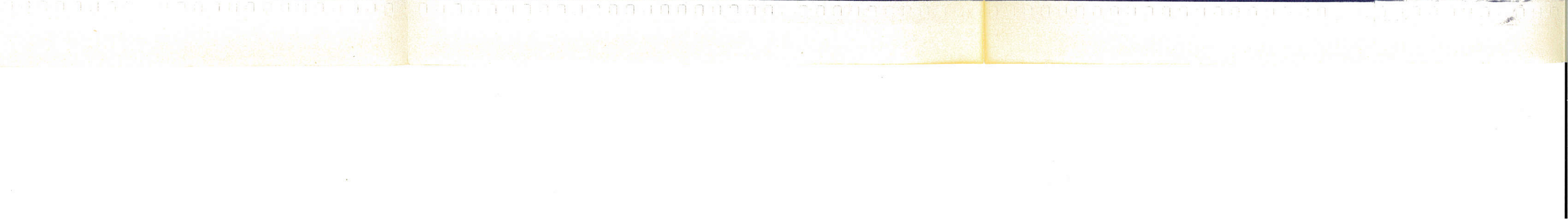
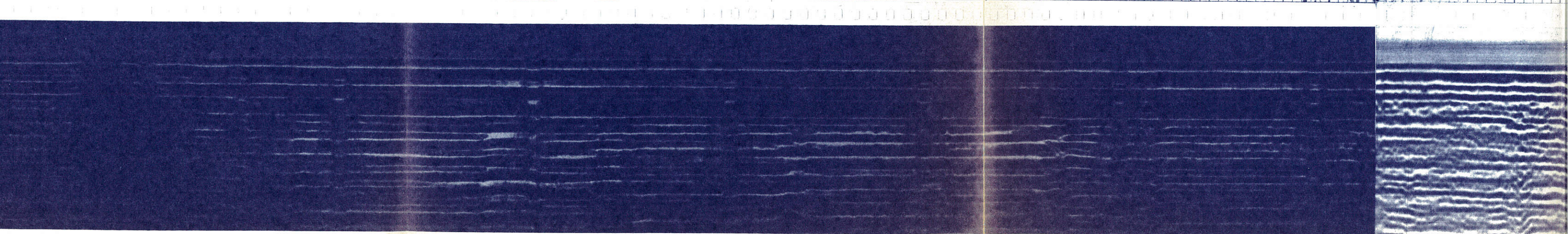
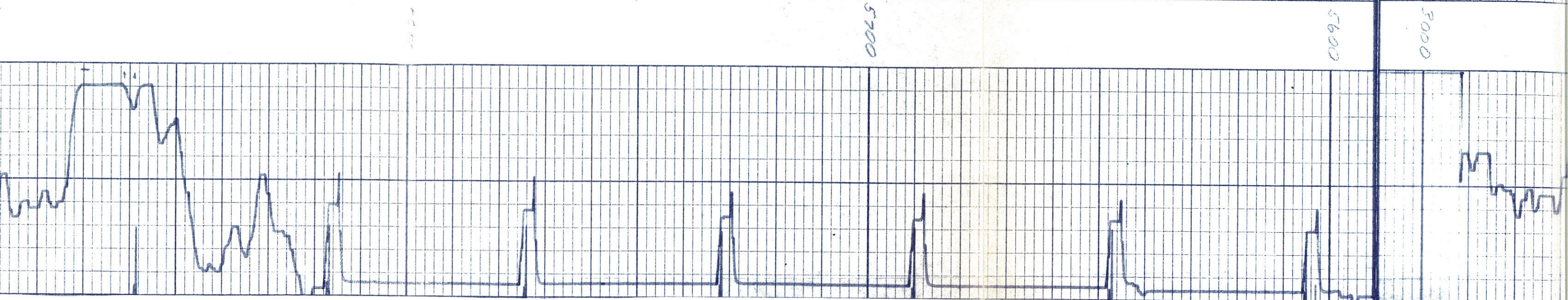
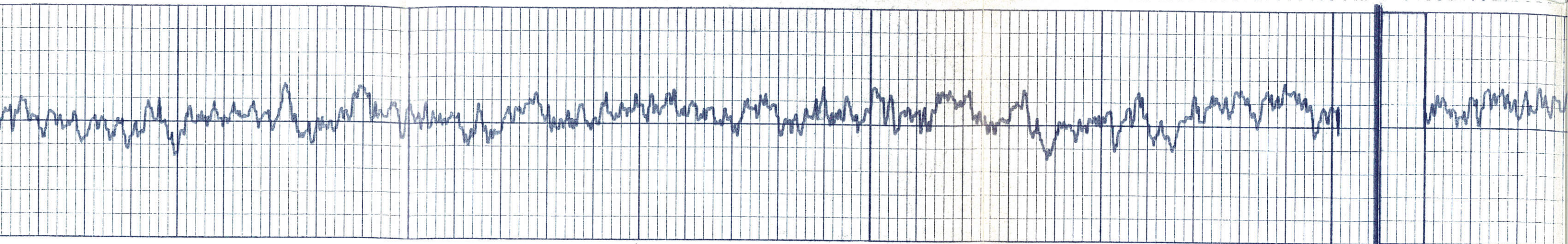
5600

3000

2900

2800





0000

0065

