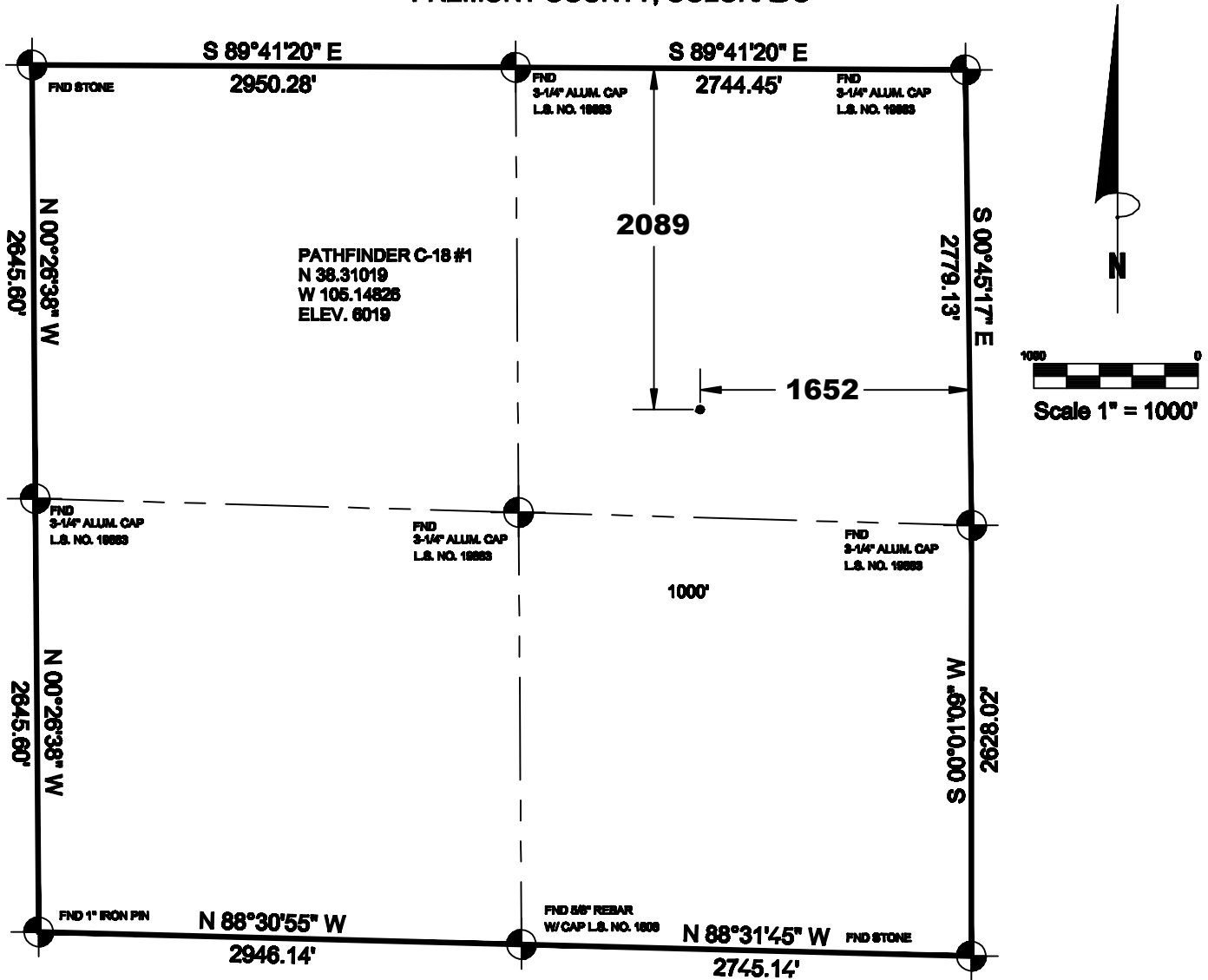


WELL LOCATION PLOT

for AUS-TEX EXPLORATION INC - PATHFINDER C-18 #1

LOCATED IN THE NE 1/4 OF SECTION 18,
T. 20 S., R. 69 W. OF THE 6TH P.M.,
FREMONT COUNTY, COLORADO



NOTES:

1.) BASIS OF BEARINGS IS THE EAST LINE OF THE NE 1/4 OF SECTION 32, T. 19 S., R. 69 W. OF THE 6TH P.M., BEING N 00°17'28" W (ASSUMED), 2858.13 BETWEEN THE FOUND 2" I.P. AND THE 2" I.P. W/ CAP L.S. NO. 27931.

2.) DIMENSIONS OF SECTION WERE DERIVED FROM GPS LOCATION SURVEY INFORMATION.
FIELD WORK PERFORMED BY: MATTHEW J. KOCH, P.L.S. 37907

3.) GROUND ELEVATION DETERMINED FROM NAD 1927 USGS, ROCKVALE TOPOGRAPHIC MAP.

4.) NRCS MAP UNIT NAME: E - ROCKY MOUNTAIN RANGE AND FOREST REGION
49 - SOUTHERN ROCKY MOUNTAIN FOOTHILLS
48A - SOUTHERN ROCKY MOUNTAINS

G - WESTERN GREAT PLAINS RANGE AND IRRIGATED REGION
69 - UPPER ARKANSAS VALLEY ROLLING PLAINS

5.) SURVEY AND DATA WAS COMPILED ON MARCH 3, 2014

6.) NO VISIBLE IMPROVEMENTS EXCEPT THOSE SHOWN HEREON.

7.) PDOP VALUE : 2.2

8.) COORDINATE SYSTEM DATUM: NAD 1983

**CORNERSTONE
LAND SURVEYING, LLC**

1022 PHAY AVE.
CANON CITY, COLORADO 81212
719-275-8881

MARCH 3, 2014

JOB # AUSTINEXP