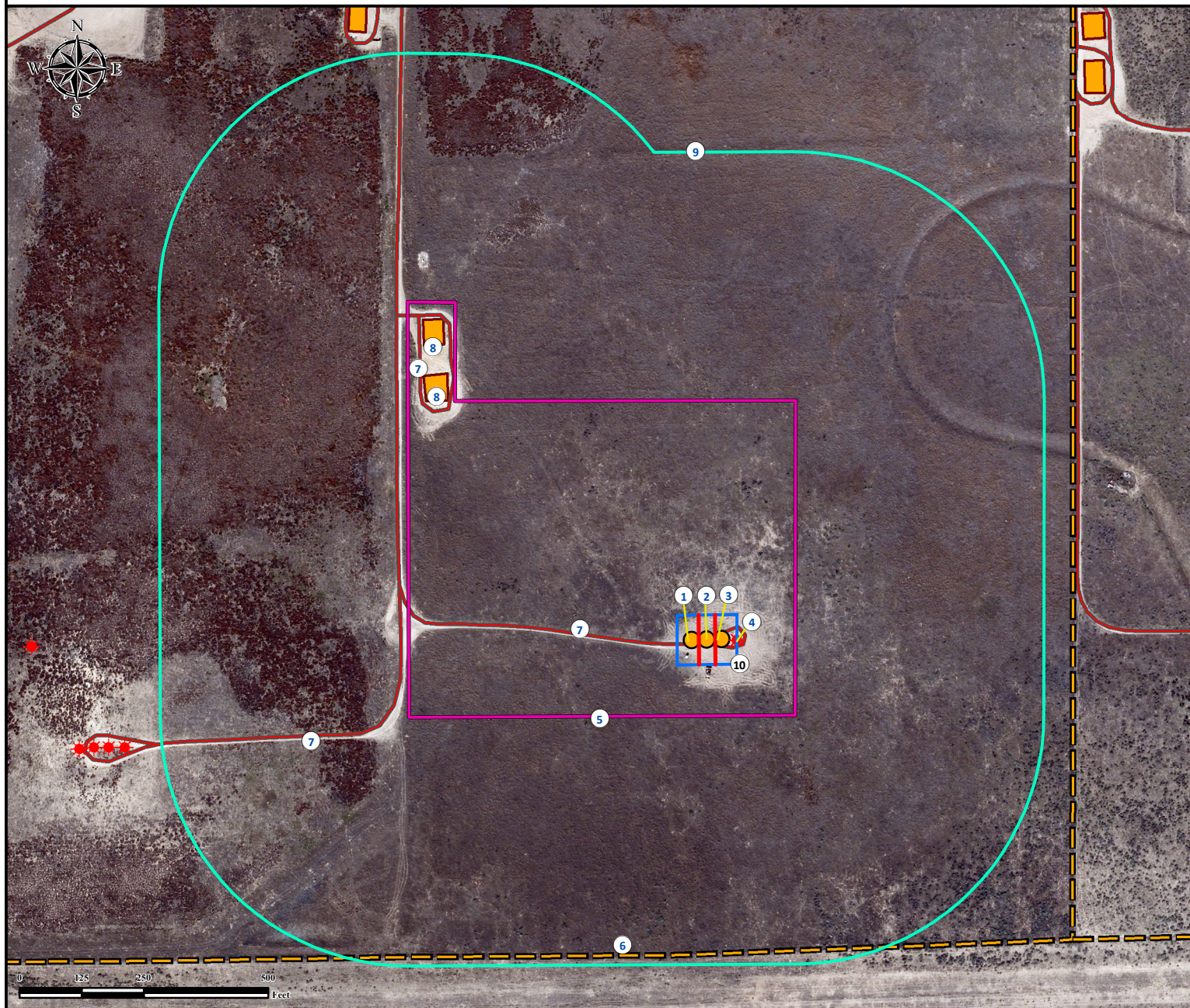


Location Drawing

JOHNSON 28N-24HZ

Horizontal Multi Well Pad

SW¼ SE¼ SECTION 24, TOWNSHIP 3 NORTH, RANGE 66 WEST OF THE 6TH PRINCIPAL MERIDIAN



1. Proposed Well JOHNSON 2N-24HZ.
2. Proposed Well JOHNSON 27N-24HZ.
3. Proposed Well JOHNSON 28N-24HZ.
4. Existing Well HSR-ROSS #15-24A is ±30' E.
5. Operational Disturbance Area.

6. Fence is ±631' S.
7. Private Roads are ±5' N, ±646' W, and ±720' NW.
8. Existing Facilities are ±732' NW, and ±816' NW.
9. 500' Radius
10. Pump Jack Operations Area.

Legend

- | | | |
|---------------|----------------------|---------------------------|
| Proposed Well | Private Road | Disturbance Area |
| Existing Well | Underground Pipeline | 500' Radius |
| Fence | Facility Enclosure | Proposed Facility |
| | | Pump Jack Operations Area |

Reference Location

**** All measurements are made from Reference Well JOHNSON 28N-24HZ ****
Lat: 40.205340° Long: -104.722949° (NAD83)
Elevation: 5037 Feet

Surface Use: Rangeland

Nearest Building Unit: >1000' NW

Prepared for:

Anadarko
 Petroleum Corporation
KERR-MCGEE OIL & GAS ONSHORE LP



Use our resources to find yours!
www.petro-fs.com
(303) 928-7128

Field Date: 08/22/2012
 Drafting Date: 04/24/2014
 Drafter: DRF
 Revision: 2

Data Sources:

- Aerial courtesy of Anadarko Petroleum Corporation (2010)