

**ANADARKO PETROLEUM CORP - EBUS
DO NOT MAIL - PO BOX 4995
THE WOODLANDS, Texas**

NRC 30C-8HZ

Majors 42

Post Job Summary

Cement Surface Casing

Prepared for:
Date Prepared: 1/30/2014
Version: 1

Service Supervisor: VIGIL, NICHOLAS

Submitted by: FINNEY, SEAN

HALLIBURTON

HALLIBURTON

Wellbore Geometry

Job Tubulars					MD		Shoe Joint Length ft
Type	Description	Size in	ID in	Wt lbm/ft	Top ft	Bottom ft	
Casing	9 5/8" Surface Casing	9.63	8.921	36.00	0.00	1,229.00	45.00
Open Hole Section	13 1/2" Open Hole Section		13.500		0.00	1,229.00	0.00

HALLIBURTON

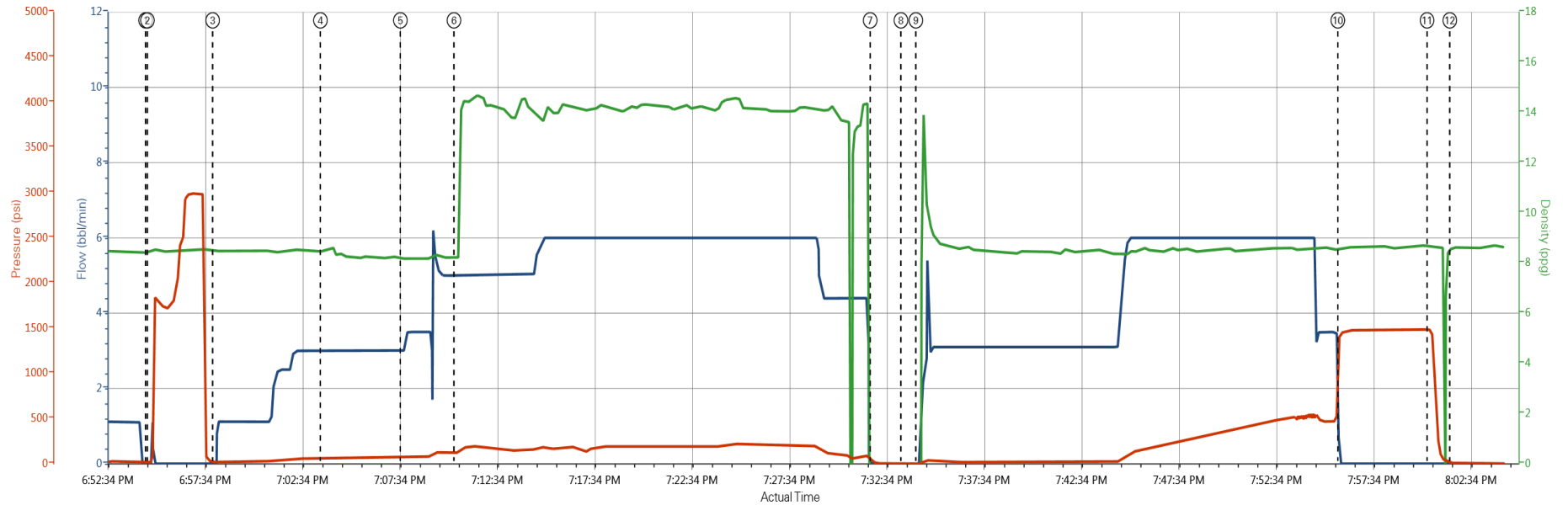
Pumping Schedule

Stage /Plug #	Fluid #	Fluid Type	Fluid Name	Surface Density lbm/gal	Avg Rate bbl/min	Surface Volume	Downhole Volume
1	1	Spacer	Fresh Water Spacer	8.33	2.50	10.0 bbl	10.0 bbl
1	2	Spacer	Mud Flush	8.40	3.00	12.0 bbl	12.0 bbl
1	1	Spacer	Fresh Water Spacer	8.33	3.50	10.0 bbl	10.0 bbl
1	3	Cement Slurry	SwiftCem B2	14.20	6.00	441.0 sacks	441.0 sacks

HALLIBURTON

Data Acquisition

Anadarko NRC 30C-8HZ



Comb Pump Rate (bbl/min) DH Density (ppg) PS Pump Press (psi)

① Start Job ② Test Lines ③ Water Spacer ④ Mud Flush ⑤ Water Spacer ⑥ 14.2 ppg SwiftCem ⑦ Shutdown ⑧ Drop Top Plug ⑨ Pump Displacement ⑩ Bump Plug ⑪ Check Floats ⑫ End Job

▼ HALLIBURTON | iCem® Service

Created: 2014-01-21 18:09:42, Version: 3.0.121

Customer: ANADARKO PETROLEUM CORP - EBUS

Job Date: 1/21/2014 6:11:01 PM

Well: NRC 30C-8HZ

Representative: Nicholas Vigil

Sales Order #: 901050322

HALLIBURTON

Service Supervisor Reports

Job Log

Date/Time	Chart #	Activity Code	Pump Rate	Cum Vol	Pump	Pressure (psig)	Comments
01/21/2014 17:25		Arrive At Loc					On location time was 1730, Rig still had around 6 joints of casing left to run
01/21/2014 17:30		Assessment Of Location Safety Meeting					Hazard hunt, Water test, Rig up safety meeting
01/21/2014 17:35		Rig-Up Equipment					
01/21/2014 18:05		Rig-Up Completed					
01/21/2014 18:45		Pre-Job Safety Meeting					Held safety meeting with all personnel on location
01/21/2014 18:54		Start Job					
01/21/2014 18:54		Test Lines					Pressure tested lines to 3000 psi
01/21/2014 18:58		Pump Spacer 1	2.5	10		44.0	Fresh Water
01/21/2014 19:03		Pump Spacer 2	3	12		61.0	Mud Flush
01/21/2014 19:07		Pump Spacer 1	3.5	10		79.0	Fresh Water
01/21/2014 19:10		Pump Cement	6	120.9		200.0	14.2 ppg SwiftCem (441 sks), weight was verified by scale
01/21/2014 19:31		Shutdown					
01/21/2014 19:33		Drop Top Plug					Plug was pre loaded
01/21/2014 19:34		Pump Displacement	6	50		250.0	Displaced using fresh water
01/21/2014 19:55		Bump Plug	3.5	92.5		480.0	Bumped plug 1000 psi over final lift bringing our pressure up to 1480 psi
01/21/2014 20:00		Check Floats					Floats held
01/21/2014 20:01		End Job					Rig down safety meeting
01/21/2014 20:05		Rig-Down Equipment					
01/21/2014 20:50		Rig-Down Completed					

The Road to Excellence Starts with Safety

Sold To #: 300466		Ship To #: 3205585		Quote #:		Sales Order #: 901050322	
Customer: ANADARKO PETROLEUM CORP - EBUS				Customer Rep: Hersh, Larry			
Well Name: NRC			Well #: 30C-8HZ		API/UWI #: 05-123-38413		
Field: WATTENBERG		City (SAP): IONE		County/Parish: Weld		State: Colorado	
Lat: N 40.059 deg. OR N 40 deg. 3 min. 33.631 secs.				Long: W 104.922 deg. OR W -105 deg. 4 min. 41.894 secs.			
Contractor: Majors			Rig/Platform Name/Num: Majors 42				
Job Purpose: Cement Surface Casing							
Well Type: Development Well				Job Type: Cement Surface Casing			
Sales Person: GREGORY, JON			Srvc Supervisor: VIGIL, NICHOLAS			MBU ID Emp #: 443481	

Job Personnel

HES Emp Name	Exp Hrs	Emp #	HES Emp Name	Exp Hrs	Emp #	HES Emp Name	Exp Hrs	Emp #
BEYER, BEAU Jon	0.0	560301	DEY, JERRY A	0.0	505015	KOSAKEWICH, LUKE Wayne	0.0	560003
LEONE, BRIAN C	0.0	561735	ROMERO, JOSEPH M	0.0	512137	ROOD, TRAVIS James	0.0	561971
STIELER, KENT	0.0	554541	VIGIL, NICHOLAS Joseph	0.0	443481			

Equipment

HES Unit #	Distance-1 way	HES Unit #	Distance-1 way	HES Unit #	Distance-1 way	HES Unit #	Distance-1 way
10867419C	10 mile	11036298	10 mile	11488570C	10 mile	11526488	10 mile
12010168	10 mile						

Job Hours

Date	On Location Hours	Operating Hours	Date	On Location Hours	Operating Hours	Date	On Location Hours	Operating Hours
TOTAL			<i>Total is the sum of each column separately</i>					

Job

Job Times

Formation Name				Date	Time	Time Zone
Formation Depth (MD)	Top	Bottom		Called Out	21 - Jan - 2014	12:45 MST
Form Type	BHST			On Location	21 - Jan - 2014	00:00 MST
Job depth MD	1229. ft	Job Depth TVD	1229. ft	Job Started	21 - Jan - 2014	18:54 MST
Water Depth	Wk Ht Above Floor			Job Completed	21 - Jan - 2014	20:01 MST
Perforation Depth (MD)	From	To		Departed Loc	21 - Jan - 2014	21:00 MST

Well Data

Description	New / Used	Max pressure psig	Size in	ID in	Weight lbf/ft	Thread	Grade	Top MD ft	Bottom MD ft	Top TVD ft	Bottom TVD ft
13 1/2" Open Hole Section				13.5				.	1229.		
9 5/8" Surface Casing	Unknown		9.625	8.921	36.		J-55	.	1229.		

Fluid Data									
Stage/Plug #: 1									
Fluid #	Stage Type	Fluid Name	Qty	Qty uom	Mixing Density lbm/gal	Yield ft ³ /sk	Mix Fluid Gal/sk	Rate bbl/min	Total Mix Fluid Gal/sk
1	Fresh Water Spacer		10.00	bbl	8.33			2.5	
2	Mud Flush		12.00	bbl	8.4			3.0	
	3.5 lbm/bbl	MUD FLUSH III, 40 LB SACK (101633304)							
	42 gal/bbl	MUD FLUSH III - SBM (528788)							
1	Fresh Water Spacer		10.00	bbl	8.33			3.5	
3	SwiftCem B2	SWIFTCEM (TM) SYSTEM (452990)	441.0	sacks	14.2	1.54	7.66	6.0	7.66
	7.66 Gal	FRESH WATER							
Calculated Values		Pressures			Volumes				
Displacement		Shut In: Instant		Lost Returns		Cement Slurry		Pad	
Top Of Cement		5 Min		Cement Returns		Actual Displacement	92.5	Treatment	
Frac Gradient		15 Min		Spacers		Load and Breakdown		Total Job	
Rates									
Circulating		Mixing		Displacement		Avg. Job			
Cement Left In Pipe	Amount	45 ft	Reason	Shoe Joint					
Frac Ring # 1 @	ID	Frac ring # 2 @	ID	Frac Ring # 3 @	ID	Frac Ring # 4 @	ID		
The Information Stated Herein Is Correct				Customer Representative Signature					

