

1801 Broadway
Suite 500
Denver, Colorado 80202



Callie Fiddes
Regulatory Technician
Tel: 303.398.0550
E-mail: cfiddes@gwogco.com

February 18, 2014

Colorado Oil and Gas Conservation Commission
1120 Lincoln Street, Suite 801
Denver, Colorado 80203

RE: **Proposed Wellbore Spacing Unit**
Bower FD 15-180HN

Niobrara New Drill
Township 6 North, Range 67 West, 6th P.M.
Section 10
Weld County, Colorado

Dear Director:

Great Western Operating Company, LLC is planning to drill the above captioned well in accordance with the provisions of COGCC Rule 318(l)e(2).

Great Western proposed wellbore spacing unit consists of:

- **E2SE Sec 9, W2SW Sec 10, W2NW Sec 15, E2NE Sec 16**

The 30 day notification time has passed and we have not received any objections to such well locations or proposed spacing unit, therefore Great Western hereby requests the Director to approve the above mentioned well. Great Western Operating Company, LLC respectfully requests that the COGCC review the enclosed map illustrating the proposed wellbore spacing unit.

Respectfully,

Callie Fiddes

Callie Fiddes
Regulatory Technician
Great Western Operating Company, LLC

T6N, R67W, 6th P.M.

GREAT WESTERN OIL & GAS COMPANY

Well location, BOWER FD 15-180HN, located as shown in the NE 1/4 SW 1/4 of Section 10, T6N, R67W, 6th P.M., Weld County, Colorado.

BASIS OF ELEVATION

USGS COOPERATIVE BASE NETWORK CONTROL STATION, DESIGNATION "VERMILYEA". NGS DATA SHEET LISTS THE NAVD 88 ELEVATION AS BEING 5026 FEET.

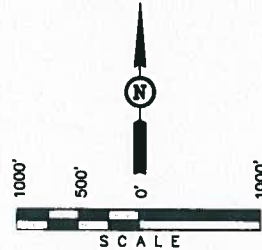
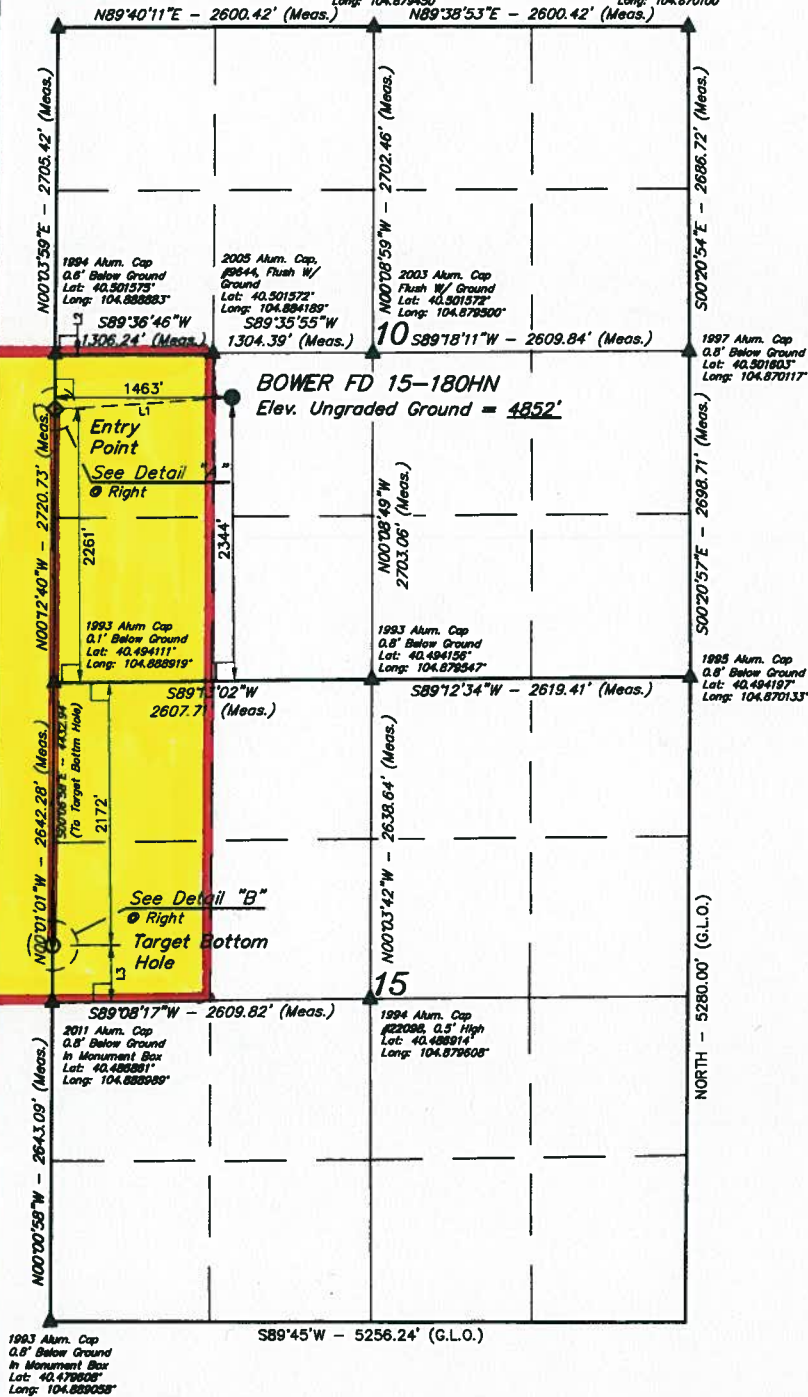
BASIS OF BEARINGS

BASIS OF BEARINGS IS A G.P.S. OBSERVATION.

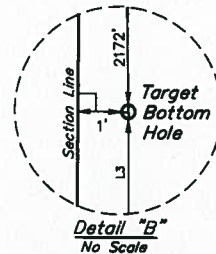
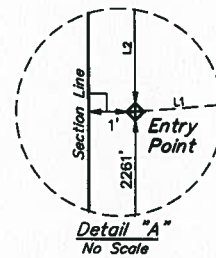
1994 Alum. Cap
0.6' Below Ground
Lat: 40.508000°
Long: 104.888800°

1997 Alum. Cap
0.5' Below Ground
Lat: 40.508988°
Long: 104.879450°

2000 Alum. Cap
0.5' Below Ground
Lat: 40.508978°
Long: 104.870100°



LINE TABLE		
LINE	DIRECTION	LENGTH
L1	S85°56'15\"W	1484.77'
L2	N00°23'14\"W	460.00'
L3	S00°51'43\"E	470.00'



LEGEND:

- = 90° SYMBOL
- = PROPOSED WELL HEAD.
- ◇ = PROPOSED ENTRY POINT.
- = PROPOSED TARGET BOTTOM HOLE.
- ▲ = SECTION CORNERS LOCATED.

CERTIFICATE

THIS IS TO CERTIFY THAT THE ABOVE IS A TRUE AND CORRECT COPY OF THE ORIGINAL SURVEY NOTES OF ACTUAL SURVEYING AND THAT THE SAME HAVE BEEN REVIEWED AND APPROVED BY ME IN THE BEST OF MY KNOWLEDGE AND BELIEF.

REGISTERED LAND SURVEYOR
REGISTRATION NO. 28285
STATE OF COLORADO

REV: 04-08-14
REV: 03-13-14

UNTAH ENGINEERING & LAND SURVEYING
85 SOUTH 200 EAST - VERNAL, UTAH 84078
(435) 789-1017

PDOP = 1.7

POINT	COORDINATES	POINT	COORDINATES	POINT	COORDINATES
1993 (WELL) BOTTOM HOLE	LATITUDE = 40°29'17.34\" (40.488150) LONGITUDE = 104°53'20.30\" (104.888872)	1994 (WELL) ENTRY POINT	LATITUDE = 40°30'01.13\" (40.500314) LONGITUDE = 104°53'18.99\" (104.888888)	1995 (WELL) SURFACE LOCATION	LATITUDE = 40°30'02.04\" (40.500567) LONGITUDE = 104°53'01.07\" (104.883631)
2001 (WELL) BOTTOM HOLE	LATITUDE = 40°29'17.41\" (40.488166) LONGITUDE = 104°53'18.40\" (104.888444)	2002 (WELL) ENTRY POINT	LATITUDE = 40°30'01.26\" (40.500333) LONGITUDE = 104°53'18.09\" (104.888358)	2003 (WELL) SURFACE LOCATION	LATITUDE = 40°30'02.16\" (40.500583) LONGITUDE = 104°52'59.17\" (104.893103)

SCALE 1" = 1000'	DATE SURVEYED: 11-19-13	DATE DRAWN: 12-13-13
PARTY DALLAS NIELSEN G.W. J.W.	REFERENCES G.L.O. PLAT	
WEATHER COOL	FILE GREAT WESTERN OIL & GAS COMPANY	