

**ANADARKO PETROLEUM CORP - EBUS
DO NOT MAIL - PO BOX 4995
THE WOODLANDS, Texas**

Brotemarkle 4C-13HZ

Majors 42

Post Job Summary **Cement Surface Casing**

Date Prepared: 4/30/2014
Version: 1

Service Supervisor: MCBRIDE, NATHAN

Submitted by: TRIER, DEREK

HALLIBURTON

HALLIBURTON

Wellbore Geometry

Job Tubulars					MD		Shoe Joint Length ft
Type	Description	Size in	ID in	Wt lbm/ft	Top ft	Bottom ft	
Casing	9 5/8" Surface Casing	9.63	8.921	36.00	0.00	1,312.00	45.00
Open Hole Section	13 1/2" Open Hole Section		13.500		0.00	1,312.00	0.00

HALLIBURTON

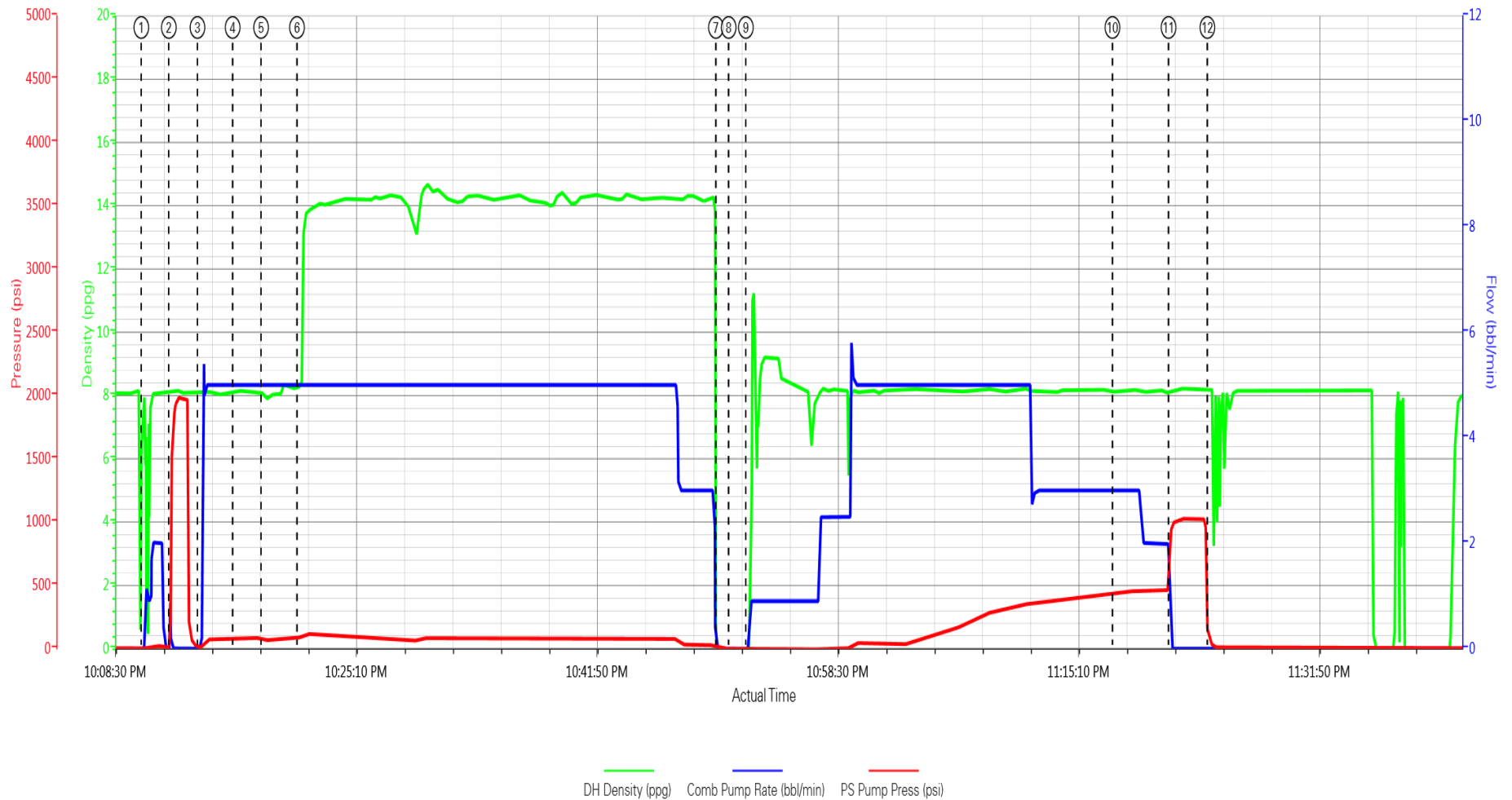
Pumping Schedule

Stage /Plug #	Fluid #	Fluid Type	Fluid Name	Surface Density lbm/gal	Avg Rate bbl/min	Surface Volume	Downhole Volume
1	1	Spacer	Fresh Water Spacer	8.33	5.00	10.0 bbl	10.0 bbl
1	2	Spacer	Mud Flush	8.40	5.00	12.0 bbl	12.0 bbl
1	1	Spacer	Fresh Water Spacer	8.33	5.00	10.0 bbl	10.0 bbl
1	3	Cement Slurry	SwiftCem B2	14.20	5.00	488.0 sacks	488.0 sacks

HALLIBURTON

Data Acquisition

Final Chart



HALLIBURTON

Service Supervisor Reports

Job Log

Date/Time	Chart #	Activity Code	Pump Rate	Cum Vol	Pump	Pressure (psig)	Comments
01/10/2014 18:15		Casing on Bottom					
01/10/2014 18:30		Circulate Well					
01/10/2014 20:30		Arrive at Location from Service Center					Casing on bottom circulating as of 1830 HES Moving from other Anadarko Surface
01/10/2014 20:35		Assessment Of Location Safety Meeting					Hazard Hunt and Discuss 3rd party activities
01/10/2014 20:40		Pre-Rig Up Safety Meeting					Review JSA and Discuss Rig up layout
01/10/2014 20:45		Rig-Up Equipment					
01/10/2014 21:10		Rig-Up Completed					
01/10/2014 21:55		Pre-Job Safety Meeting					With Customer and 3rd Parties involved
01/10/2014 22:10		Start Job					
01/10/2014 22:10		Pump Water	2	2		30.0	Fill Lines
01/10/2014 22:12		Test Lines				1979.0	
01/10/2014 22:14		Pump Water	5	10		90.0	Fresh Water
01/10/2014 22:16		Pump Spacer	5	12		90.0	Mud Flush
01/10/2014 22:18		Pump Water	5	10		90.0	Fresh Water
01/10/2014 22:21		Pump Cement	5	133.8		180.0	386sks @ 14.2ppg, 1.54yield, 7.66gal/sk
01/10/2014 22:50		Shutdown					
01/10/2014 22:51		Drop Top Plug					
01/10/2014 22:52		Pump Displacement	5	97.2		368.0	Fresh Water
01/10/2014 23:17		Cement Returns to Surface					84bbls Displaced 13 bbls to Pit
01/10/2014 23:21		Bump Plug				459.0	980 final pressure on plug
01/10/2014 23:24		Check Floats					Floats Good
01/10/2014 23:25		End Job					Thanks McBride and Crew

The Road to Excellence Starts with Safety

Sold To #: 300466	Ship To #: 3117159	Quote #:	Sales Order #: 901032116
Customer: ANADARKO PETROLEUM CORP - EBUS		Customer Rep: Porter, Bob	
Well Name: Brotemarkle		Well #: 4C-13HZ	API/UWI #: 05-123-36518
Field: WATTENBERG	City (SAP): PLATTEVILLE	County/Parish: Weld	State: Colorado
Contractor: Majors		Rig/Platform Name/Num: Majors 42	
Job Purpose: Cement Surface Casing			
Well Type: Development Well		Job Type: Cement Surface Casing	
Sales Person: GREGORY, JON		Srvc Supervisor: MCBRIDE, NATHAN	MBU ID Emp #: 313810

Job Personnel

HES Emp Name	Exp Hrs	Emp #	HES Emp Name	Exp Hrs	Emp #	HES Emp Name	Exp Hrs	Emp #
ALVARADO, JOSE Angel	3.8	505918	MCBRIDE, NATHAN Charles	3.8	313810			

Job

Job Times

Formation Name					Date	Time	Time Zone
Formation Depth (MD)	Top	Bottom			Called Out	10 - Jan - 2014	15:00 MST
Form Type	BHST				On Location	10 - Jan - 2014	00:00 MST
Job depth MD	1312. ft		Job Depth TVD		Job Started	10 - Jan - 2014	22:10 MST
Water Depth			Wk Ht Above Floor		Job Completed	10 - Jan - 2014	23:25 MST
Perforation Depth (MD)	From	To			Departed Loc	10 - Jan - 2014	00:20 MST

Well Data

Description	New / Used	Max pressure psig	Size in	ID in	Weight lbm/ft	Thread	Grade	Top MD ft	Bottom MD ft	Top TVD ft	Bottom TVD ft
13 1/2" Open Hole Section				13.5				.	1312.		
9 5/8" Surface Casing	Unknown		9.625	8.921	36.		J-55	.	1312.		

Fluid Data

Stage/Plug #: 1

Fluid #	Stage Type	Fluid Name	Qty	Qty uom	Mixing Density lbm/gal	Yield ft ³ /sk	Mix Fluid Gal/sk	Rate bbl/min	Total Mix Fluid Gal/sk
1	Fresh Water Spacer		10.00	bbl	8.33			5.0	
2	Mud Flush		12.00	bbl	8.4			5.0	
3.5 lbm/bbl		MUD FLUSH III, 40 LB SACK (101633304)							
42 gal/bbl		MUD FLUSH III - SBM (528788)							
1	Fresh Water Spacer		10.00	bbl	8.33			5.0	
3	SwiftCem B2	SWIFTCem (TM) SYSTEM (452990)	488.0	sacks	14.2	1.54	7.66	5.0	7.66
7.66 Gal		FRESH WATER							

Calculated Values

Pressures

Volumes

Displacement		Shut In: Instant		Lost Returns		Cement Slurry		Pad	
Top Of Cement		5 Min		Cement Returns	13	Actual Displacement	97.2	Treatment	
Frac Gradient		15 Min		Spacers	32	Load and Breakdown		Total Job	

Rates											
Circulating		Mixing		Displacement	5.0	Avg. Job					
Cement Left In Pipe	Amount	45 ft	Reason	Shoe Joint							
Frac Ring # 1 @	ID		Frac ring # 2 @	ID		Frac Ring # 3 @	ID		Frac Ring # 4 @	ID	
The Information Stated Herein Is Correct				Customer Representative Signature							

