

LEGEND:

 PROPOSED LOCATION

BILL BARRETT CORPORATION

ANSCHUTZ EQUUS FARMS N2N2 4-62-33_34 PAD
#4-62-33-1609CH2, 1609BH2, 1609CDH2, 0108CH2 & 0108BH2
SECTION 33, T4N, R62W, 6th P.M.
NW 1/4 NW 1/4



Uintah Engineering & Land Surveying
85 South 200 East Vernal, Utah 84078
(435) 789-1017 * FAX (435) 789-1813

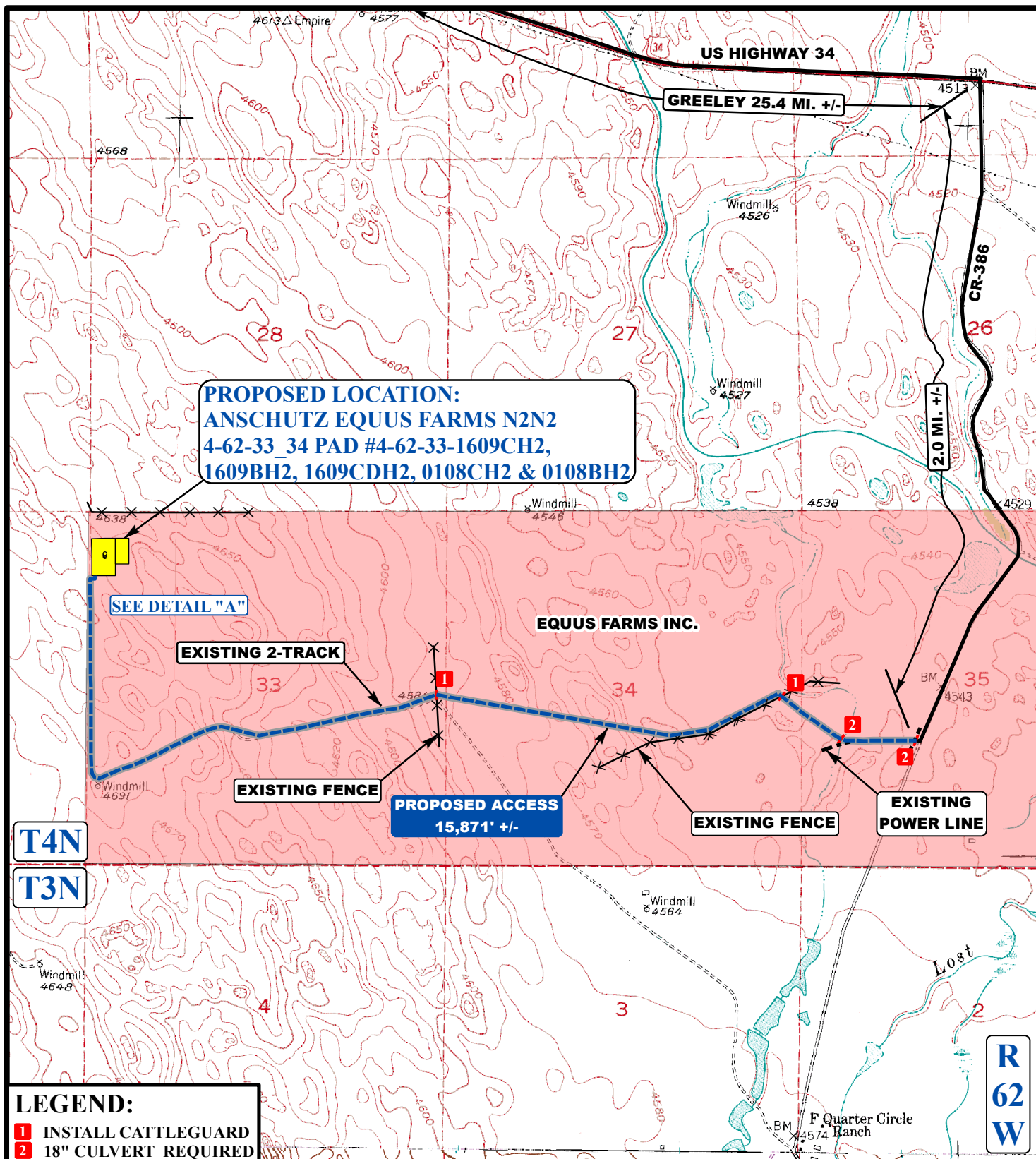


**ACCESS ROAD
MAP**

01 27 14
MONTH DAY YEAR

SCALE: 1:100,000 DRAWN BY: T.W. REVISED: 00-00-00





LEGEND:

- EXISTING ROADS
- PROPOSED ACCESS ROAD
- × × × × × EXISTING FENCE
- EXISTING POWER LINE
- EXISTING 2-TRACK

BILL BARRETT CORPORATION

ANSCHUTZ EQUUS FARMS N2N2 4-62-33_34 PAD
#4-62-33-1609CH2, 1609BH2, 1609CDH2, 0108CH2 & 0108BH2
SECTION 33, T4N, R62W, 6th P.M.
NW 1/4 NW 1/4

ACCESS ROAD
MAP

01 **27** **14**
 MONTH DAY YEAR

SCALE: 1" = 2000' DRAWN BY: T.W. REV: 4-23-14 J.L.G.

B
 TOPO

U
E
S

Utah Engineering & Land Surveying
 85 South 200 East Vernal, Utah 84078
 (435) 789-1017 * FAX (435) 789-1813

BILL BARRETT CORPORATION

ANSCHUTZ EQUUS FARMS N2N2 4-62-33_34 PAD

#4-62-33-1609CH2, 1609BH2, 1609CDH2, 0108CH2 & 0108BH2

SECTION 33, T4N, R62W, 6th P.M.

PROCEED IN AN EASTERLY, THEN SOUTHEASTERLY DIRECTION FROM GREELEY, COLORADO ALONG HIGHWAY 34 APPROXIMATELY 25.4 MILES TO THE JUNCTION OF THIS ROAD AND COUNTY ROAD 386 TO THE SOUTH; TURN RIGHT AND PROCEED IN A SOUTHERLY DIRECTION APPROXIMATELY 2.0 MILES TO THE BEGINNING OF THE PROPOSED ACCESS ROAD TO THE WEST; FOLLOW ROAD FLAGS IN A WESTERLY, THEN NORTHERLY DIRECTION APPROXIMATELY 15,871' TO THE PROPOSED LOCATION.

TOTAL DISTANCE FROM GREELEY, COLORADO TO THE PROPOSED LOCATION IS APPROXIMATELY 30.4 MILES.