

**ANADARKO PETROLEUM CORP - EBUS  
DO NOT MAIL - PO BOX 4995  
THE WOODLANDS, Texas**

Badding 36C-35HZ

**Majors 29**

## **Post Job Summary** **Cement Surface Casing**

Date Prepared: 12/23/2013  
Version: 1

Service Supervisor: PICKELL, CHRISTOPHER

Submitted by: TRIER, DEREK

**HALLIBURTON**

# HALLIBURTON

## Wellbore Geometry

---

Job Tubulars					MD		Shoe Joint Length ft
Type	Description	Size in	ID in	Wt lbm/ft	Top ft	Bottom ft	
Casing	9 5/8" Surface Casing	9.63	8.921	36.00	0.00	1,319.00	42.70
Open Hole Section	13 1/2" Open Hole Section		13.500		0.00	1,329.00	0.00

# HALLIBURTON

## ***Pumping Schedule***

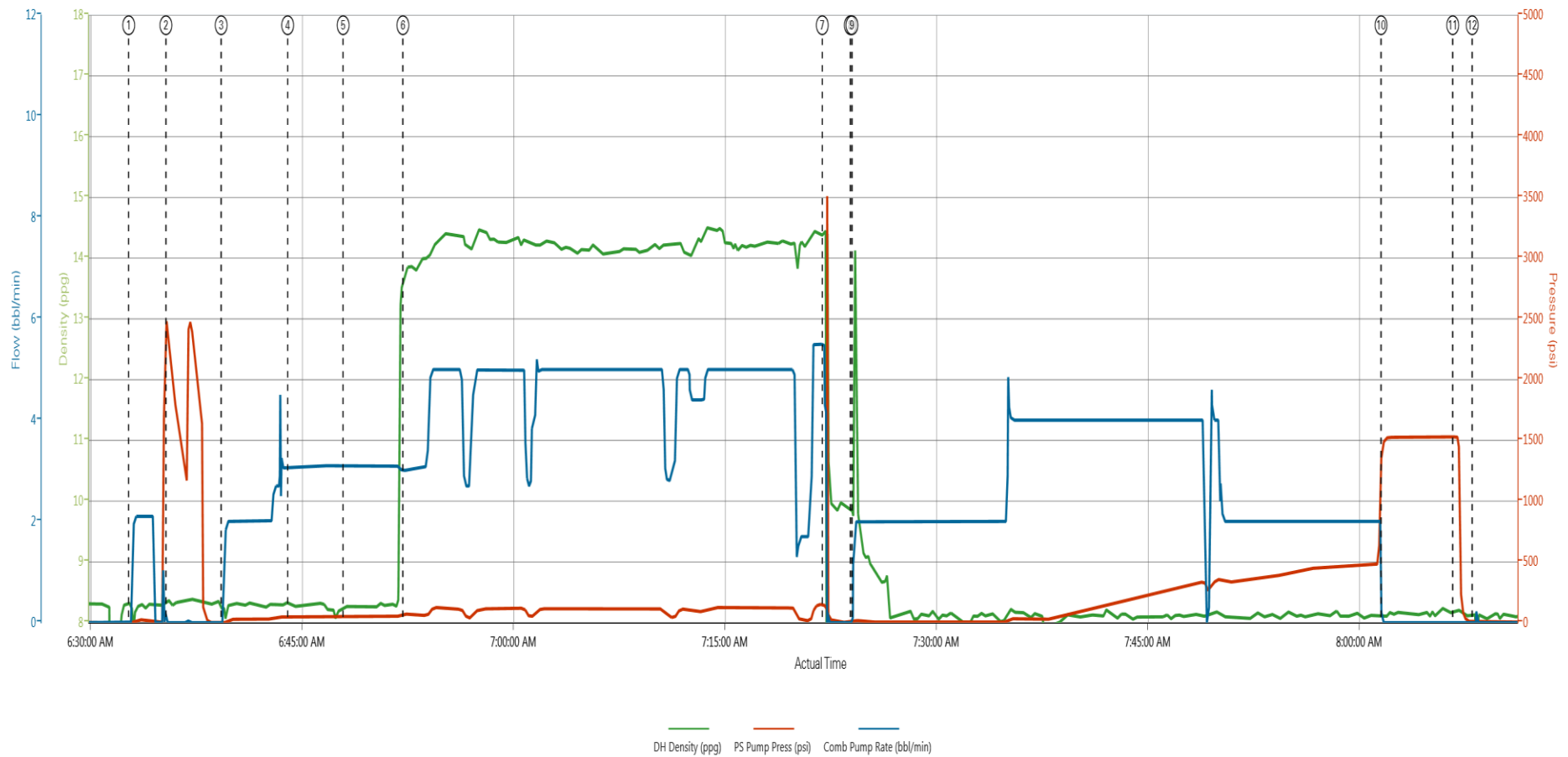
---

Stage /Plug #	Fluid #	Fluid Type	Fluid Name	Surface Density lbm/gal	Avg Rate bbl/min	Surface Volume	Downhole Volume
1	1	Spacer	Fresh Water Spacer	8.33	2.00	10.0 bbl	10.0 bbl
1	2	Spacer	Mud Flush	8.40	3.00	12.0 bbl	12.0 bbl
1	1	Spacer	Fresh Water Spacer	8.33	3.00	10.0 bbl	10.0 bbl
1	3	Cement Slurry	SwiftCem B2	14.20	5.00	498.0 sacks	498.0 sacks

# HALLIBURTON

## Data Acquisition

BADDING 36C-35HZ (9 5/8" SURFACE)



① Start Job 8:27;7,0    ④ Pump Mudflush 8:32;46,3.1    ⑦ Shutdown 14:44;150;5.5    ⑩ Bump Plug 8:13;1472;0  
 ② Test Lines 8:4;2415;0    ⑤ Pump Water 8:29;49;3.1    ⑧ Drop Top Plug 9:05;3;0    ⑪ Check Floats 8:18;1529;0  
 ③ Pump Water 8:21;3;0    ⑥ Pump Swiftcem 14:2# 13.72;71;3    ⑨ Pump Displacement 10:78;9;1.4    ⑫ End Job 8:11;5;0

# HALLIBURTON

## Service Supervisor Reports

### Job Log

Date/Time	Chart #	Activity Code	Pump Rate	Cum Vol	Pump		Pressure (psig)		Comments
12/01/2013 23:00		Call Out							CREW CALLED OUT AT 2300 TO BE ON LOCATION AT 0400. CREW WAS CHRIS PICKELL, WILLIAM JEWELL, SPENCER TORREY, BRANDON ALVAREZ
12/02/2013 03:00		Depart from Service Center or Other Site							SAFETY MEETING HELD FOR JOURNEY THEN LEFT THE YARD FOR MAJOR 29
12/02/2013 03:30		Arrive At Loc							ARRIVE AT LOCATION AT 0330. RIG HAD ONE JOINT OF CASING LEFT TO RUN. RIG ON BOTTOM WITH CASING AT 0430
12/02/2013 03:45		Rig-Up Equipment							HAZARD HUNT PERFORMED. WATER TEST DONE. RIG UP PLANNED AND EXECUTED
12/02/2013 06:00		Pre-Job Safety Meeting							SAFETY MEETING WITH ALL PERSONEL ON LOCATION TO DISCUSS JOB SAFETY AND PROCEDURE
12/02/2013 06:32		Start Job							QUICK LATCH PLUG CONTAINER USED ON JOB
12/02/2013 06:35		Test Lines	1	3				2500.0	PRESSURE TEST LINES TO 2500 PSI. CHECK FOR VISIBLE LEAKS AND PRESSURE LOSS
12/02/2013 06:39		Pump Spacer 1	2	10				26.0	PUMP WATER. RETURNS BEGAN WITH 1 BBL AWAY
12/02/2013 06:44		Pump Spacer 2	3	12				48.0	PUMP MUDFLUSH
12/02/2013 06:48		Pump Spacer 1	3	10				50.0	PUMP WATER
12/02/2013 06:52		Pump Cement	5	136.5				115.0	PUMP SWIFTCEM CEMENT 498 SKS 14.2 PPG 1.54 CUFT/SK 7.66 GAL/SK
12/02/2013 07:22		Shutdown							WASH PUMPS AND LINES ON TOP OF THE PLUG
12/02/2013 07:24		Drop Top Plug							PLUG PRELOADED. WITNESSED BY COMPANY MAN
12/02/2013 07:24		Pump Displacement	4	99.3				450.0	PUMP DISPLACEMENT USING WATER
12/02/2013 08:01		Bump Plug	2					480.0	CALCULATED PRESSURE TO LAND WAS 388. PLUG LANDED WITH 480 PSI GOING 1000 PSI OVER TO 1450
12/02/2013 08:06		Check Floats						1529.0	PRESSURE WAS HELD FOR 5 MINUTES THEN RELEASED. FLOATS HELD. 1 BBL BACK TO THE TANKS
12/02/2013 08:08		End Job							6 BBL OF CEMENT TO SURFACE
12/02/2013 08:10		Pre-Rig Down Safety Meeting							SAFETY MEETING HELD TO DISCUSS RIG DOWN SAFETY AND PROCEDURE
12/02/2013 08:15		Rig-Down Equipment							WASH UP PUMP. BLOW DOWN LINES. RIG DOWN ALL EQUIPMENT
12/02/2013 09:00		Depart Location for Service Center or Other Site							LEAVE LOCATION FOR THE YARD

## The Road to Excellence Starts with Safety

Sold To #: 300466	Ship To #: 3204389	Quote #:	Sales Order #: 900930044
Customer: ANADARKO PETROLEUM CORP - EBUS		Customer Rep: Balkenbush, Bob	
Well Name: Badding		Well #: 36C-35HZ	API/UWI #: 05-123-38409
Field: WATTENBERG	City (SAP): FORT LUPTON	County/Parish: Weld	State: Colorado
Contractor: Majors		Rig/Platform Name/Num: Majors 29	
Job Purpose: Cement Surface Casing			
Well Type: Development Well		Job Type: Cement Surface Casing	
Sales Person: GREGORY, JON		Srvc Supervisor: PICKELL, CHRISTOPHER	MBU ID Emp #: 396838

## Job Personnel

HES Emp Name	Exp Hrs	Emp #	HES Emp Name	Exp Hrs	Emp #	HES Emp Name	Exp Hrs	Emp #
ALVAREZ, BRANDON Paul	0.0	555850	JEWELL, WILLIAM Uris	0.0	503358	PICKELL, CHRISTOPHER Lee	0.0	396838
TORREY, SPENCER Kenneth	0.0	549837						

## Equipment

HES Unit #	Distance-1 way	HES Unit #	Distance-1 way	HES Unit #	Distance-1 way	HES Unit #	Distance-1 way
10866493C	11 mile	11064046C	11 mile	11605597	11 mile	11645063	11 mile
11667703C	11 mile						

## Job

## Job Times

Formation Name						Date	Time	Time Zone		
Formation Depth (MD)		Top		Bottom		Called Out	01 - Dec - 2013	23:00	MST	
Form Type			BHST			On Location	02 - Dec - 2013	03:30	MST	
Job depth MD		1329. ft		Job Depth TVD		1329. ft	Job Started	02 - Dec - 2013	06:32	MST
Water Depth				Wk Ht Above Floor		5. ft	Job Completed	02 - Dec - 2013	08:08	MST
Perforation Depth (MD)		From		To		Departed Loc	02 - Dec - 2013	09:00	MST	

## Well Data

Description	New / Used	Max pressure psig	Size in	ID in	Weight lbf/ft	Thread	Grade	Top MD ft	Bottom MD ft	Top TVD ft	Bottom TVD ft
13 1/2" Open Hole Section				13.5				.	1329.		
9 5/8" Surface Casing	Unknown		9.625	8.921	36.		J-55	.	1319.		

Sales/Rental/3<sup>rd</sup> Party (HES)

Description	Qty	Qty uom	Depth	Supplier
CMT CASING EQUIPMENT BOM	1	JOB		
MILEAGE FOR CEMENTING CREW,ZI	20	MI		
ZI FUEL SURCHG-CARS/PICKUPS<1 1/2TON	20	MI		
KIT,HALL WELD-A	1	EA		
Description	Qty	Qty uom	Depth	Supplier
CNTRLZR, 9 5/8"x13 3/4',#500-0963-1375	8	EA		
BASKET - CEMENT - 9-5/8 CSG X 12-1/4	1	EA		
PLUG,CMTG,TOP,9 5/8,HWE,8.16 MIN/9.06 MA	1	EA		
COLLAR-STOP-9 5/8"-FRICTION-HINGED	2	EA		

## Fluid Data

Stage/Plug #: 1									
Fluid #	Stage Type	Fluid Name	Qty	Qty uom	Mixing Density lbm/gal	Yield ft <sup>3</sup> /sk	Mix Fluid Gal/sk	Rate bbl/min	Total Mix Fluid Gal/sk
1	Fresh Water Spacer		10.00	bbl	8.33			2.0	
2	Mud Flush		12.00	bbl	8.4			3.0	
3.5 lbm/bbl		MUD FLUSH III, 40 LB SACK (101633304)							
42 gal/bbl		MUD FLUSH III - SBM (528788)							
1	Fresh Water Spacer		10.00	bbl	8.33			3.0	
3	SwiftCem B2	SWIFTCM (TM) SYSTEM (452990)	498.0	sacks	14.2	1.54	7.66	5.0	7.66
7.66 Gal		FRESH WATER							
Calculated Values		Pressures		Volumes					
Displacement	99.3	Shut In: Instant		Lost Returns	0	Cement Slurry		Pad	
Top Of Cement		5 Min		Cement Returns	6.0	Actual Displacement	99.3	Treatment	
Frac Gradient		15 Min		Spacers	32.0	Load and Breakdown		Total Job	
Rates									
Circulating		Mixing		Displacement		Avg. Job			
Cement Left In Pipe	Amount	42.7 ft	Reason	Shoe Joint					
Frac Ring # 1 @	ID	Frac ring # 2 @	ID	Frac Ring # 3 @	ID	Frac Ring # 4 @	ID		
The Information Stated Herein Is Correct				Customer Representative Signature					

