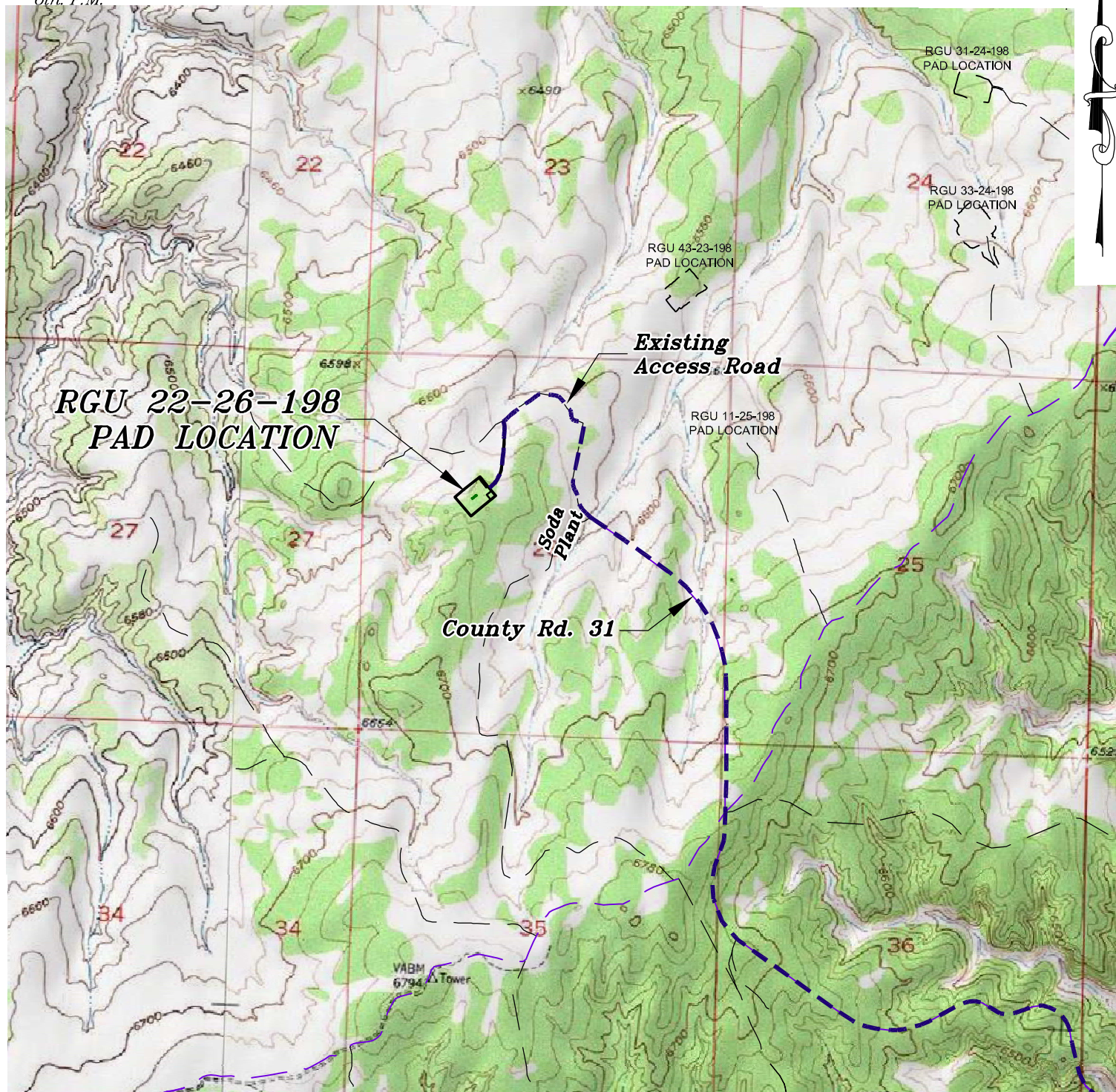


Section 26
T. 1 S., R. 98 W.
6th. P.M.



ACCESS DESCRIPTION:

FROM THE INTERSECTION OF STATE HIGHWAY 64 AND RIO BLANCO COUNTY ROAD 5 PROCEED SOUTHERLY ALONG COUNTY ROAD 5 ± 14.5 MILES TO THE INTERSECTION WITH COUNTY ROAD 24 (Mile Marker 26.8), PROCEED WESTERLY ALONG COUNTY ROAD 24 ± 1.8 MILES TO THE INTERSECTION WITH COUNTY ROAD 31, PROCEED RIGHT IN A NORTHERLY DIRECTION ALONG COUNTY ROAD 31, ± 3.2 MILES TO THE AMERICAN SODA PLANT, PROCEED IN A NORTHERLY TO WESTERLY DIRECTION ± 0.6 TO AN INTERSECTION WITH A DIRT/GRAVEL ROAD, PROCEED LEFT IN A SOUTHERLY DIRECTION ± 0.2 MILES TO THE RGU 22-26-198 DRILL PAD LOCATION, AS SHOWN HEREON.

136 East Third Street
Rifle, Colorado 81650
Ph. (970) 625-2720
Fax (970) 625-2773



BOOKCLIFF
Survey Services, Inc.

SCALE: 1" = 2000'
DATE: 9/23/13
PLAT: 5 of 7
PROJECT: WPX Valley
DFT: cs

Construction Plan Prepared for:
WPX ENERGY WPX Energy Rocky Mountain, LLC

*RGU 22-26-198 Drill Pad - Plat 5
ACCESS ROAD & TOPO MAP*