



Well Name: RGU 422-26-198
Surface Location: RGU 22-26-198
North American Datum 1983 , US State Plane 1983 , Colorado Central Zone
Ground Elevation: 6669.00
Northing 1778631.70 Easting 2196996.50 Latitude 39.93641 Longitude -108.36390 Slot A09
KELLY BUSHING @ 6690.00usft (Cyclone 29 (21' RKB) kjs)

+N/-S
0.00

+E/-W
0.00

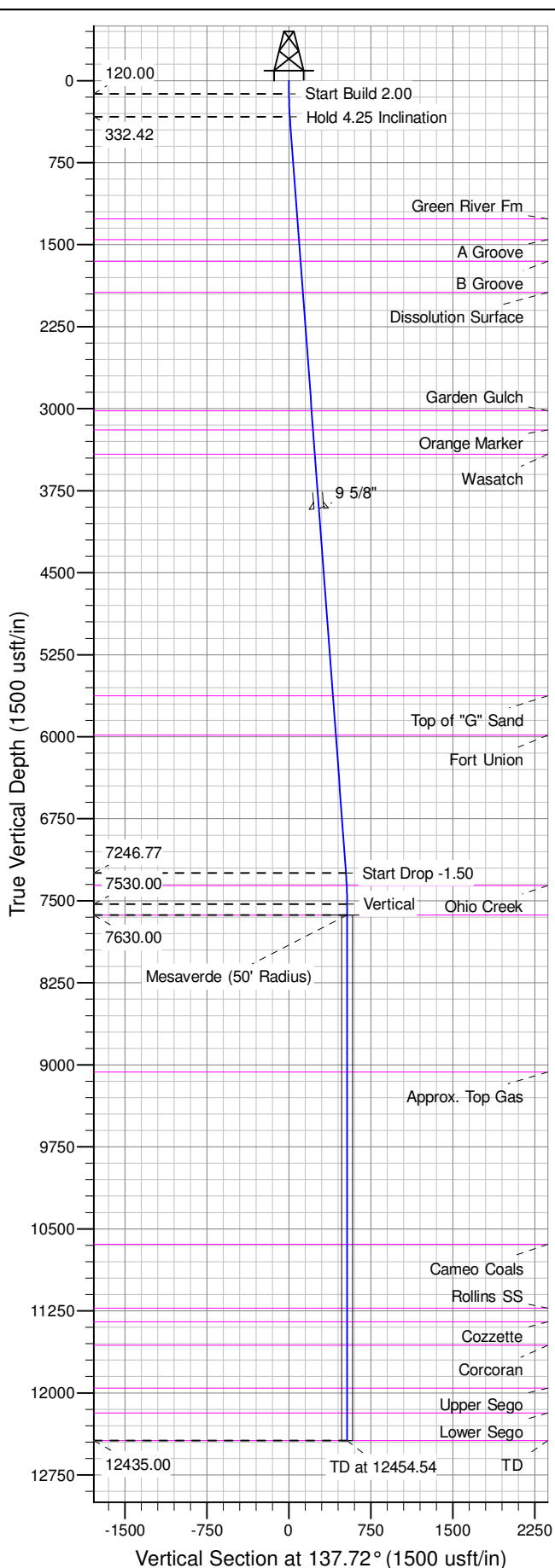
Northing
1778631.70

Easting
2196996.50

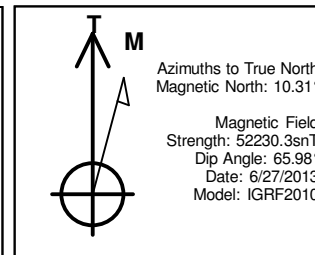
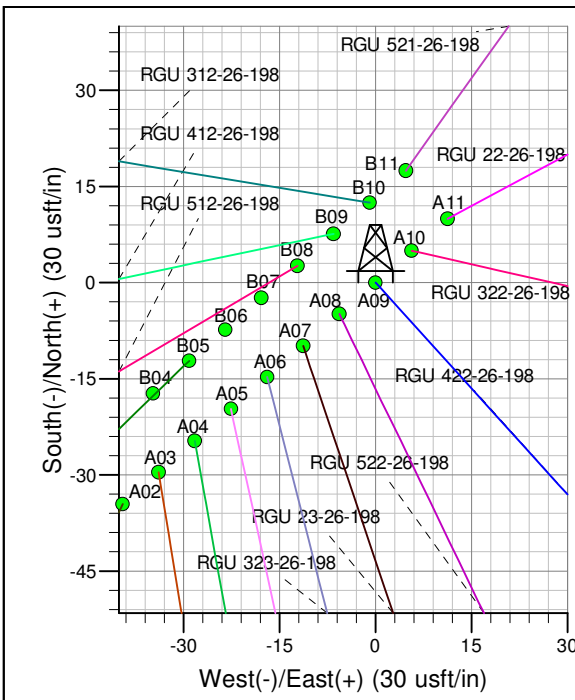
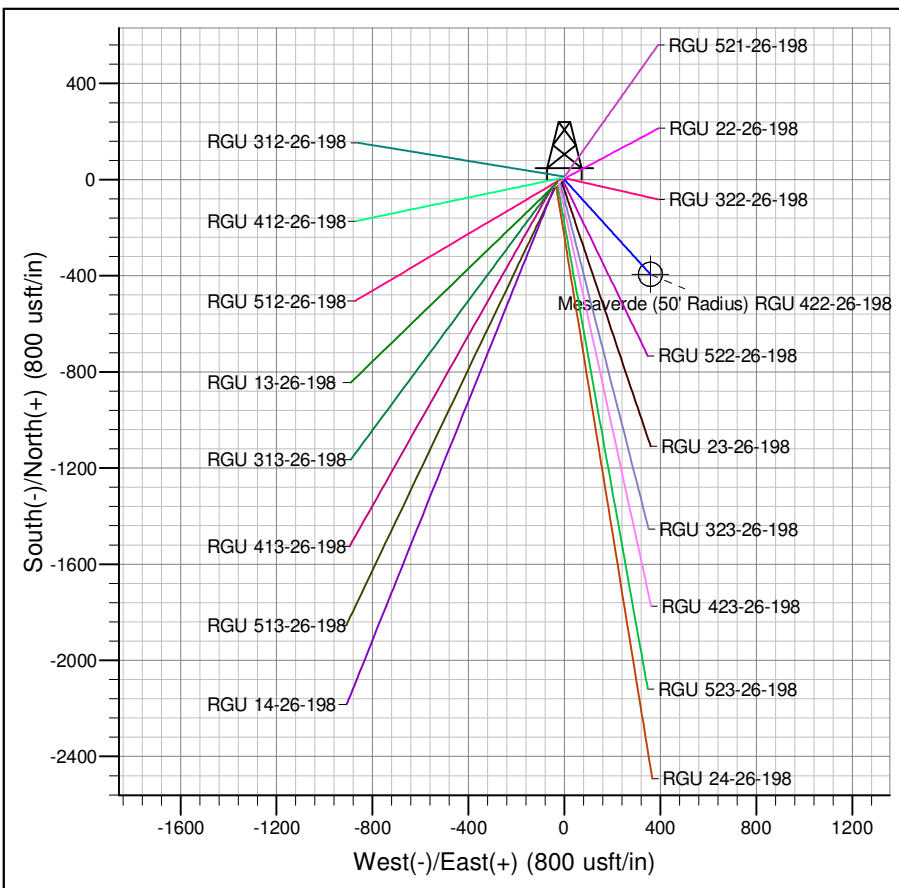
Latitude
39.93641

Longitude
-108.36390

Slot
A09



ANNOTATIONS									
TVD	MD	Inc	Azi	+N/-S	+E/-W	Vsect	Departure	Annotation	
120.00	120.00	0.00	0.00	0.00	0.00	0.00	0.00	Start Build 2.00	
332.42	332.62	4.25	137.72	-5.84	5.31	7.89	7.89	Hold 4.25 Inclination	
7246.77	7266.05	4.25	137.72	-386.23	351.15	522.00	522.00	Start Drop -1.50	
7530.00	7549.54	0.00	0.00	-394.01	358.22	532.51	532.51	Vertical	
7630.00	7649.54	0.00	0.00	-394.01	358.22	532.51	532.51	Mesaverde	
12435.00	12454.54	0.00	0.00	-394.01	358.22	532.51	532.51	TD at 12454.54	



Project: RG 26-01S-098W
Site: RGU 22-26-198
Well: RGU 422-26-198
Design #2 24Feb14 kjs