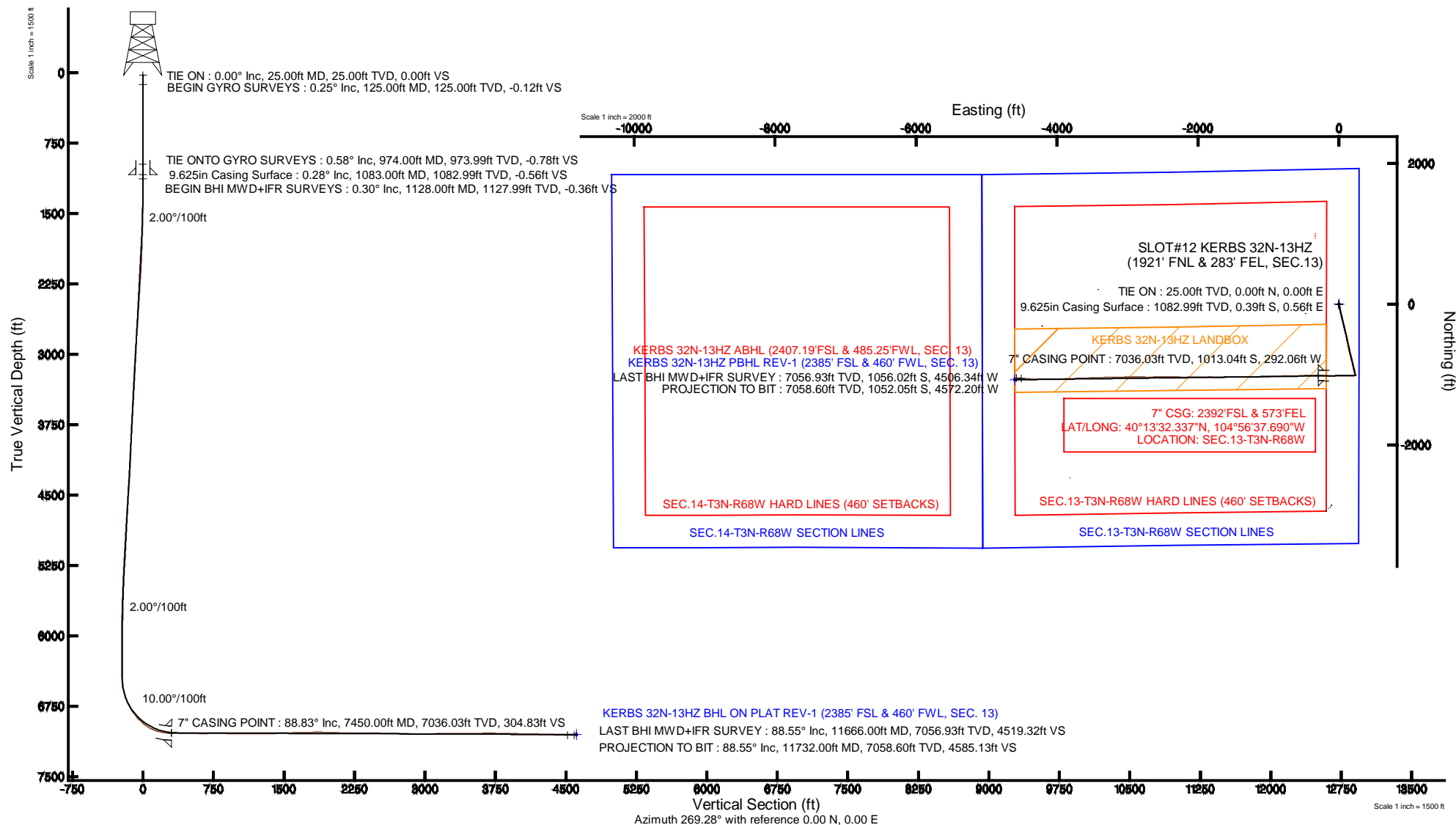


Location:	COLORADO	Slot:	SLOT#12 KERBS 32N-13HZ (1921' FNL & 283' FEL, SEC.13)
Field:	WELD COUNTY (KERR MCGEE)	Well:	KERBS 32N-13HZ
Facility:	SEC.13-T3N-R68W	Wellbore:	KERBS 32N-13HZ PWB

Plot reference wellpath is KERBS 32N-13HZ (REV-A.1) PWP	
True vertical depths are referenced to H&P 307 (RKB)	Grid System: NAD83 / Lambert Colorado SP, Northern Zone (501), US feet
Measured depths are referenced to H&P 307 (RKB)	North Reference: True north
H&P 307 (RKB) to Mean Sea Level: 4898 feet	Scale: True distance
Mean Sea Level to Mud line (At Slot: SLOTH12 KERBS 32N-13HZ (1921' FNL & 283' FEL, SEC.13)): 0 feet	Depths are in feet
Coordinates are in feet referenced to Slot	Created by: robisole01 on 04/Mar/2014



Actual Wellpath Report

KERBS 32N-13HZ AWP

Page 1 of 6

REFERENCE WELLPATH IDENTIFICATION

Operator	KERR-MCGEE OIL & GAS ONSHORE LP	Slot	SLOT#12 KERBS 32N-13HZ (1921' FNL & 283' FEL, SEC.13)
Area	COLORADO	Well	KERBS 32N-13HZ
Field	WELD COUNTY (KERR MCGEE)	Wellbore	KERBS 32N-13HZ AWB
Facility	SEC.13-T3N-R68W		

REPORT SETUP INFORMATION

Projection System	NAD83 / Lambert Colorado SP, Northern Zone (501), US feet	Software System	WellArchitect® 4.0.0
North Reference	True	User	Robiale01
Scale	0.999957	Report Generated	04/Mar/2014 at 13:12
Convergence at slot	n/a	Database/Source file	WellArchitectDB/KERBS_32N-13HZ_AWB.xml

WELLPATH LOCATION

	Local coordinates		Grid coordinates		Geographic coordinates	
	North[ft]	East[ft]	Easting[US ft]	Northing[US ft]	Latitude	Longitude
Slot Location	2856.93	103.70	3155589.70	1326547.93	40°13'42.348"N	104°56'33.925"W
Facility Reference Pt			3155503.95	1323690.53	40°13'14.116"N	104°56'35.262"W
Field Reference Pt			3197771.84	1268891.29	40°04'09.600"N	104°47'36.000"W

WELLPATH DATUM

Calculation method	Minimum curvature	H&P 307 (RKB) to Facility Vertical Datum	4898.00ft
Horizontal Reference Pt	Slot	H&P 307 (RKB) to Mean Sea Level	4898.00ft
Vertical Reference Pt	H&P 307 (RKB)	H&P 307 (RKB) to Mud Line at Slot (SLOT#12 KERBS 32N-13HZ (1921' FNL & 283' FEL, SEC.13))	4898.00ft
MD Reference Pt	H&P 307 (RKB)	Section Origin	N 0.00, E 0.00 ft
Field Vertical Reference	Mean Sea Level	Section Azimuth	269.28°

Actual Wellpath Report

KERBS 32N-13HZ AWP

Page 2 of 6

REFERENCE WELLPATH IDENTIFICATION			
Operator	KERR-MCGEE OIL & GAS ONSHORE LP	Slot	SLOT#12 KERBS 32N-13HZ (1921' FNL & 283' FEL, SEC.13)
Area	COLORADO	Well	KERBS 32N-13HZ
Field	WELD COUNTY (KERR MCGEE)	Wellbore	KERBS 32N-13HZ AWP
Facility	SEC.13-T3N-R68W		

WELLPATH DATA (133 stations) † = interpolated/extrapolated station										
MD [ft]	Inclination [°]	Azimuth [°]	TVD [ft]	Vert Sect [ft]	North [ft]	East [ft]	Latitude	Longitude	DLS [°/100ft]	Comments
0.00†	0.000	146.650	0.00	0.00	0.00	0.00	40°13'42.348"N	104°56'33.925"W	0.00	
25.00	0.000	146.650	25.00	0.00	0.00	0.00	40°13'42.348"N	104°56'33.925"W	0.00	TIE ON
125.00	0.250	146.650	125.00	-0.12	-0.18	0.12	40°13'42.346"N	104°56'33.923"W	0.25	BEGIN GYRO SURVEYS
225.00	0.190	21.160	225.00	-0.30	-0.21	0.30	40°13'42.346"N	104°56'33.921"W	0.39	
325.00	0.290	13.380	325.00	-0.42	0.19	0.42	40°13'42.350"N	104°56'33.920"W	0.10	
425.00	0.230	12.820	425.00	-0.53	0.63	0.52	40°13'42.354"N	104°56'33.918"W	0.06	
525.00	0.330	318.840	525.00	-0.39	1.05	0.38	40°13'42.358"N	104°56'33.920"W	0.27	
625.00	0.370	287.520	624.99	0.10	1.36	-0.12	40°13'42.361"N	104°56'33.927"W	0.19	
725.00	0.500	134.560	724.99	0.10	1.15	-0.12	40°13'42.359"N	104°56'33.927"W	0.85	
825.00	0.290	137.950	824.99	-0.37	0.66	0.36	40°13'42.354"N	104°56'33.920"W	0.21	
925.00	0.210	63.630	924.99	-0.70	0.55	0.70	40°13'42.353"N	104°56'33.916"W	0.31	
974.00	0.580	180.590	973.99	-0.78	0.34	0.77	40°13'42.351"N	104°56'33.915"W	1.43	TIE ONTO GYRO SURVEYS
1128.00	0.300	265.910	1127.99	-0.36	-0.47	0.36	40°13'42.343"N	104°56'33.920"W	0.41	BEGIN BHI MWD+IFR SURVEYS
1222.00	1.420	184.520	1221.98	-0.01	-1.65	0.03	40°13'42.332"N	104°56'33.925"W	1.50	
1317.00	2.690	171.420	1316.91	-0.20	-5.02	0.27	40°13'42.298"N	104°56'33.922"W	1.42	
1412.00	4.070	168.940	1411.75	-1.11	-10.54	1.25	40°13'42.244"N	104°56'33.909"W	1.46	
1507.00	6.060	163.640	1506.37	-3.07	-18.66	3.30	40°13'42.164"N	104°56'33.882"W	2.15	
1604.00	7.000	171.540	1602.74	-5.24	-29.42	5.62	40°13'42.057"N	104°56'33.853"W	1.34	
1698.00	8.790	172.600	1695.85	-6.85	-42.21	7.38	40°13'41.931"N	104°56'33.830"W	1.91	
1791.00	11.060	168.910	1787.45	-9.28	-58.01	10.02	40°13'41.775"N	104°56'33.796"W	2.53	
1885.00	12.790	170.360	1879.42	-12.52	-77.12	13.49	40°13'41.586"N	104°56'33.751"W	1.87	
1978.00	14.450	171.660	1969.80	-15.65	-98.75	16.90	40°13'41.372"N	104°56'33.707"W	1.81	
2072.00	14.980	167.610	2060.72	-19.66	-122.22	21.21	40°13'41.140"N	104°56'33.652"W	1.23	
2165.00	15.640	167.180	2150.42	-24.72	-146.18	26.57	40°13'40.903"N	104°56'33.582"W	0.72	
2258.00	15.390	166.390	2240.03	-30.10	-170.40	32.25	40°13'40.664"N	104°56'33.509"W	0.35	
2351.00	15.220	165.040	2329.73	-35.85	-194.19	38.31	40°13'40.429"N	104°56'33.431"W	0.42	
2445.00	15.240	163.820	2420.43	-42.18	-217.97	44.94	40°13'40.194"N	104°56'33.346"W	0.34	
2538.00	15.430	165.270	2510.12	-48.43	-241.68	51.49	40°13'39.960"N	104°56'33.261"W	0.46	
2632.00	15.340	166.080	2600.75	-54.30	-265.84	57.66	40°13'39.721"N	104°56'33.182"W	0.25	
2725.00	14.710	163.750	2690.57	-60.26	-289.12	63.92	40°13'39.491"N	104°56'33.101"W	0.94	
2819.00	15.520	166.100	2781.32	-66.33	-312.78	70.28	40°13'39.257"N	104°56'33.019"W	1.08	
2912.00	15.150	165.500	2871.01	-72.06	-336.63	76.32	40°13'39.021"N	104°56'32.941"W	0.43	
3005.00	15.360	165.420	2960.73	-77.90	-360.31	82.46	40°13'38.787"N	104°56'32.862"W	0.23	
3098.00	14.770	166.490	3050.54	-83.47	-383.76	88.33	40°13'38.556"N	104°56'32.786"W	0.70	
3190.00	14.850	166.930	3139.48	-88.59	-406.64	93.74	40°13'38.330"N	104°56'32.717"W	0.15	
3377.00	12.950	166.200	3320.99	-98.45	-450.34	104.15	40°13'37.898"N	104°56'32.582"W	1.02	
3471.00	13.380	166.860	3412.52	-103.18	-471.16	109.14	40°13'37.692"N	104°56'32.518"W	0.48	
3565.00	14.290	169.440	3503.80	-107.50	-493.16	113.74	40°13'37.475"N	104°56'32.459"W	1.17	
3660.00	13.160	168.980	3596.08	-111.43	-515.30	117.95	40°13'37.256"N	104°56'32.404"W	1.19	
3754.00	15.060	169.340	3687.24	-115.45	-537.80	122.26	40°13'37.033"N	104°56'32.349"W	2.02	
3849.00	15.340	169.720	3778.92	-119.67	-562.30	126.78	40°13'36.791"N	104°56'32.290"W	0.31	
3943.00	15.270	169.800	3869.59	-123.77	-586.71	131.19	40°13'36.550"N	104°56'32.234"W	0.08	
4132.00	12.030	170.140	4053.22	-131.00	-630.63	138.98	40°13'36.116"N	104°56'32.133"W	1.71	
4226.00	13.240	167.490	4144.95	-134.75	-650.79	142.99	40°13'35.917"N	104°56'32.082"W	1.43	
4321.00	13.220	166.350	4237.42	-139.40	-671.96	147.91	40°13'35.708"N	104°56'32.018"W	0.28	

Actual Wellpath Report

KERBS 32N-13HZ AWP

Page 3 of 6

REFERENCE WELLPATH IDENTIFICATION

Operator	KERR-MCGEE OIL & GAS ONSHORE LP	Slot	SLOT#12 KERBS 32N-13HZ (1921' FNL & 283' FEL, SEC.13)
Area	COLORADO	Well	KERBS 32N-13HZ
Field	WELD COUNTY (KERR MCGEE)	Wellbore	KERBS 32N-13HZ AWP
Facility	SEC.13-T3N-R68W		

WELLPATH DATA (133 stations) † = interpolated/extrapolated station

MD [ft]	Inclination [°]	Azimuth [°]	TVD [ft]	Vert Sect [ft]	North [ft]	East [ft]	Latitude	Longitude	DLS [°/100ft]	Comments
4415.00	14.800	168.440	4328.63	-144.06	-694.17	152.85	40°13'35.488"N	104°56'31.954"W	1.76	
4510.00	15.510	163.700	4420.32	-149.76	-718.25	158.85	40°13'35.250"N	104°56'31.877"W	1.50	
4605.00	14.760	162.260	4512.03	-156.71	-741.97	166.10	40°13'35.016"N	104°56'31.784"W	0.88	
4698.00	15.010	163.470	4601.91	-163.46	-764.80	173.13	40°13'34.790"N	104°56'31.693"W	0.43	
4793.00	15.120	164.260	4693.64	-170.02	-788.52	179.99	40°13'34.556"N	104°56'31.604"W	0.25	
4887.00	14.520	163.690	4784.52	-176.36	-811.63	186.63	40°13'34.328"N	104°56'31.519"W	0.66	
4981.00	14.200	167.740	4875.58	-181.83	-834.21	192.39	40°13'34.104"N	104°56'31.445"W	1.12	
5076.00	15.390	166.710	4967.43	-186.90	-857.86	197.76	40°13'33.871"N	104°56'31.375"W	1.28	
5171.00	14.710	167.430	5059.17	-192.12	-881.90	203.28	40°13'33.633"N	104°56'31.304"W	0.74	
5265.00	13.880	167.110	5150.26	-196.95	-904.54	208.40	40°13'33.409"N	104°56'31.238"W	0.89	
5359.00	12.710	166.060	5241.74	-201.69	-925.57	213.40	40°13'33.202"N	104°56'31.174"W	1.27	
5454.00	11.720	165.140	5334.59	-206.44	-945.04	218.39	40°13'33.009"N	104°56'31.109"W	1.06	
5548.00	10.260	166.000	5426.86	-210.69	-962.39	222.87	40°13'32.838"N	104°56'31.052"W	1.56	
5642.00	9.230	165.290	5519.50	-214.43	-977.80	226.81	40°13'32.685"N	104°56'31.001"W	1.10	
5737.00	7.380	162.500	5613.50	-218.04	-990.99	230.58	40°13'32.555"N	104°56'30.952"W	1.99	
5831.00	5.610	165.860	5706.90	-220.85	-1001.21	233.52	40°13'32.454"N	104°56'30.914"W	1.93	
5926.00	4.200	156.390	5801.55	-223.28	-1008.90	236.04	40°13'32.378"N	104°56'30.882"W	1.71	
6020.00	2.280	149.930	5895.39	-225.53	-1013.67	238.36	40°13'32.331"N	104°56'30.852"W	2.08	
6114.00	0.800	127.450	5989.36	-226.96	-1015.69	239.82	40°13'32.311"N	104°56'30.833"W	1.67	
6209.00	0.310	324.940	6084.36	-227.34	-1015.88	240.20	40°13'32.309"N	104°56'30.828"W	1.16	
6492.00	0.590	287.300	6367.35	-225.52	-1014.82	238.37	40°13'32.320"N	104°56'30.852"W	0.14	
6586.00	3.160	268.690	6461.29	-222.47	-1014.74	235.31	40°13'32.320"N	104°56'30.891"W	2.77	
6633.00	7.170	265.380	6508.09	-218.25	-1015.00	231.09	40°13'32.318"N	104°56'30.946"W	8.55	
6680.00	10.410	263.950	6554.53	-211.09	-1015.69	223.94	40°13'32.311"N	104°56'31.038"W	6.91	
6727.00	14.790	265.040	6600.39	-200.88	-1016.65	213.74	40°13'32.301"N	104°56'31.169"W	9.33	
6775.00	18.250	267.460	6646.40	-187.25	-1017.52	200.12	40°13'32.293"N	104°56'31.345"W	7.35	
6822.00	22.740	269.360	6690.41	-170.80	-1017.94	183.68	40°13'32.289"N	104°56'31.557"W	9.66	
6869.00	27.000	271.400	6733.05	-151.05	-1017.79	163.92	40°13'32.290"N	104°56'31.812"W	9.24	
6916.00	30.540	271.010	6774.24	-128.44	-1017.31	141.31	40°13'32.295"N	104°56'32.103"W	7.54	
6964.00	33.880	269.370	6814.85	-102.87	-1017.25	115.73	40°13'32.296"N	104°56'32.433"W	7.19	
7016.00	37.620	266.170	6857.04	-72.51	-1018.47	85.39	40°13'32.284"N	104°56'32.824"W	8.04	
7059.00	43.630	266.380	6889.67	-44.56	-1020.28	57.46	40°13'32.266"N	104°56'33.184"W	13.98	
7106.00	49.550	269.190	6921.95	-10.45	-1021.56	23.36	40°13'32.253"N	104°56'33.624"W	13.32	
7154.00	53.230	271.420	6951.90	27.04	-1021.34	-14.13	40°13'32.255"N	104°56'34.107"W	8.48	
7201.00	59.440	272.170	6977.95	66.10	-1020.11	-53.21	40°13'32.267"N	104°56'34.611"W	13.28	
7248.00	65.970	271.840	6999.49	107.79	-1018.65	-94.93	40°13'32.282"N	104°56'35.149"W	13.91	
7295.00	73.540	271.890	7015.74	151.81	-1017.22	-138.97	40°13'32.296"N	104°56'35.717"W	16.11	
7343.00	79.900	272.540	7026.76	198.44	-1015.41	-185.63	40°13'32.314"N	104°56'36.318"W	13.32	
7390.00	84.510	271.630	7033.13	244.94	-1013.72	-232.15	40°13'32.331"N	104°56'36.918"W	9.99	
7428.00	88.360	270.350	7035.49	282.84	-1013.06	-270.06	40°13'32.337"N	104°56'37.407"W	10.67	
7450.00†	88.835	269.748	7036.03	304.83	-1013.04	-292.06	40°13'32.337"N	104°56'37.690"W	3.48	7" CASING POINT
7485.00	89.590	268.790	7036.51	339.83	-1013.49	-327.05	40°13'32.333"N	104°56'38.141"W	3.48	
7532.00	89.070	268.710	7037.06	386.82	-1014.51	-374.03	40°13'32.323"N	104°56'38.747"W	1.12	
7626.00	89.660	269.080	7038.11	480.82	-1016.33	-468.01	40°13'32.305"N	104°56'39.959"W	0.74	
7721.00	89.410	268.590	7038.88	575.81	-1018.26	-562.99	40°13'32.286"N	104°56'41.183"W	0.58	

Actual Wellpath Report

KERBS 32N-13HZ AWP

Page 4 of 6

REFERENCE WELLPATH IDENTIFICATION

Operator	KERR-MCGEE OIL & GAS ONSHORE LP	Slot	SLOT#12 KERBS 32N-13HZ (1921' FNL & 283' FEL, SEC.13)
Area	COLORADO	Well	KERBS 32N-13HZ
Field	WELD COUNTY (KERR MCGEE)	Wellbore	KERBS 32N-13HZ AWP
Facility	SEC.13-T3N-R68W		

WELLPATH DATA (133 stations)

MD [ft]	Inclination [°]	Azimuth [°]	TVD [ft]	Vert Sect [ft]	North [ft]	East [ft]	Latitude	Longitude	DLS [°/100ft]	Comments
7815.00	90.300	269.270	7039.11	669.81	-1020.01	-656.97	40°13'32.268"N	104°56'42.395"W	1.19	
7910.00	90.460	268.690	7038.48	764.80	-1021.70	-751.95	40°13'32.251"N	104°56'43.619"W	0.63	
8004.00	89.230	267.310	7038.74	858.77	-1024.98	-845.89	40°13'32.219"N	104°56'44.830"W	1.97	
8099.00	88.950	268.080	7040.25	953.73	-1028.81	-940.80	40°13'32.181"N	104°56'46.054"W	0.86	
8193.00	89.590	268.840	7041.45	1047.71	-1031.33	-1034.76	40°13'32.156"N	104°56'47.265"W	1.06	
8288.00	90.580	269.950	7041.30	1142.70	-1032.33	-1129.75	40°13'32.146"N	104°56'48.490"W	1.57	
8382.00	90.490	269.120	7040.43	1236.70	-1033.10	-1223.74	40°13'32.139"N	104°56'49.702"W	0.89	
8477.00	89.840	268.730	7040.15	1331.70	-1034.88	-1318.72	40°13'32.121"N	104°56'50.926"W	0.80	
8571.00	91.630	269.820	7038.95	1425.68	-1036.07	-1412.70	40°13'32.109"N	104°56'52.138"W	2.23	
8665.00	91.720	269.720	7036.20	1519.64	-1036.45	-1506.66	40°13'32.105"N	104°56'53.349"W	0.14	
8760.00	92.030	269.780	7033.09	1614.58	-1036.86	-1601.61	40°13'32.101"N	104°56'54.573"W	0.33	
8854.00	90.920	269.950	7030.67	1708.55	-1037.08	-1695.58	40°13'32.099"N	104°56'55.785"W	1.19	
8949.00	90.980	270.260	7029.10	1803.52	-1036.91	-1790.56	40°13'32.101"N	104°56'57.009"W	0.33	
9043.00	89.130	269.750	7029.01	1897.51	-1036.90	-1884.56	40°13'32.101"N	104°56'58.221"W	2.04	
9138.00	88.180	269.610	7031.24	1992.48	-1037.43	-1979.53	40°13'32.095"N	104°56'59.445"W	1.01	
9232.00	88.360	270.080	7034.07	2086.43	-1037.68	-2073.49	40°13'32.093"N	104°57'00.657"W	0.54	
9327.00	89.720	270.210	7035.67	2181.41	-1037.44	-2168.47	40°13'32.095"N	104°57'01.881"W	1.44	
9421.00	90.210	270.800	7035.72	2275.39	-1036.62	-2262.47	40°13'32.103"N	104°57'03.093"W	0.82	
9516.00	89.250	270.180	7036.17	2370.36	-1035.80	-2357.46	40°13'32.111"N	104°57'04.318"W	1.20	
9610.00	88.760	270.210	7037.80	2464.34	-1035.48	-2451.45	40°13'32.114"N	104°57'05.529"W	0.52	
9705.00	89.290	269.170	7039.42	2559.32	-1036.00	-2546.43	40°13'32.109"N	104°57'06.754"W	1.23	
9799.00	88.520	269.760	7041.22	2653.30	-1036.87	-2640.41	40°13'32.100"N	104°57'07.966"W	1.03	
9893.00	89.350	270.190	7042.96	2747.27	-1036.92	-2734.39	40°13'32.100"N	104°57'09.177"W	0.99	
9988.00	89.220	270.380	7044.15	2842.25	-1036.44	-2829.38	40°13'32.104"N	104°57'10.402"W	0.24	
10082.00	90.060	269.540	7044.74	2936.24	-1036.51	-2923.38	40°13'32.104"N	104°57'11.614"W	1.26	
10176.00	90.090	270.090	7044.62	3030.24	-1036.81	-3017.38	40°13'32.100"N	104°57'12.826"W	0.59	
10271.00	90.860	268.970	7043.83	3125.23	-1037.59	-3112.37	40°13'32.093"N	104°57'14.050"W	1.43	
10366.00	90.490	268.650	7042.71	3220.22	-1039.56	-3207.34	40°13'32.073"N	104°57'15.275"W	0.51	
10460.00	90.030	268.060	7042.28	3314.21	-1042.26	-3301.30	40°13'32.046"N	104°57'16.486"W	0.80	
10554.00	89.960	268.080	7042.29	3408.19	-1045.43	-3395.25	40°13'32.015"N	104°57'17.697"W	0.08	
10649.00	90.950	268.010	7041.54	3503.16	-1048.67	-3490.19	40°13'31.983"N	104°57'18.921"W	1.04	
10743.00	91.500	268.120	7039.53	3597.12	-1051.84	-3584.11	40°13'31.951"N	104°57'20.132"W	0.60	
10837.00	89.750	267.900	7038.50	3691.08	-1055.11	-3678.05	40°13'31.919"N	104°57'21.343"W	1.88	
10931.00	88.980	267.620	7039.54	3785.05	-1058.78	-3771.97	40°13'31.882"N	104°57'22.554"W	0.87	
11026.00	88.920	268.070	7041.28	3880.00	-1062.35	-3866.88	40°13'31.847"N	104°57'23.777"W	0.48	
11120.00	88.450	268.440	7043.44	3973.96	-1065.21	-3960.82	40°13'31.819"N	104°57'24.988"W	0.64	
11215.00	88.950	269.070	7045.60	4068.93	-1067.28	-4055.77	40°13'31.798"N	104°57'26.213"W	0.85	
11309.00	88.640	270.060	7047.57	4162.91	-1067.99	-4149.74	40°13'31.791"N	104°57'27.424"W	1.10	
11403.00	87.990	270.890	7050.34	4256.84	-1067.21	-4243.70	40°13'31.798"N	104°57'28.635"W	1.12	
11498.00	88.240	271.890	7053.46	4351.73	-1064.91	-4338.62	40°13'31.821"N	104°57'29.859"W	1.08	
11593.00	89.260	273.500	7055.54	4446.53	-1060.44	-4433.49	40°13'31.865"N	104°57'31.082"W	2.01	
11666.00	88.550	273.450	7056.93	4519.32	-1056.02	-4506.34	40°13'31.908"N	104°57'32.021"W	0.98	LAST BHI MWD+IFR SURVEY
11732.00	88.550	273.450	7058.60	4585.13	-1052.05	-4572.20	40°13'31.948"N	104°57'32.870"W	0.00	PROJECTION TO BIT

Actual Wellpath Report

KERBS 32N-13HZ AWP

Page 5 of 6

REFERENCE WELLPATH IDENTIFICATION

Operator	KERR-MCGEE OIL & GAS ONSHORE LP	Slot	SLOT#12 KERBS 32N-13HZ (1921' FNL & 283' FEL, SEC.13)
Area	COLORADO	Well	KERBS 32N-13HZ
Field	WELD COUNTY (KERR MCGEE)	Wellbore	KERBS 32N-13HZ AWB
Facility	SEC.13-T3N-R68W		

HOLE & CASING SECTIONS - Ref Wellbore: KERBS 32N-13HZ AWB Ref Wellpath: KERBS 32N-13HZ AWP

String/Diameter	Start MD [ft]	End MD [ft]	Interval [ft]	Start TVD [ft]	End TVD [ft]	Start N/S [ft]	Start E/W [ft]	End N/S [ft]	End E/W [ft]
13.5in Open Hole	25.00	1094.00	1069.00	25.00	1093.99	0.00	0.00	-0.42	0.52
9.625in Casing Surface	25.00	1083.00	1058.00	25.00	1082.99	0.00	0.00	-0.39	0.56
8.75in Open Hole	1094.00	7488.00	6394.00	1093.99	7036.54	-0.42	0.52	-1013.55	-330.05
7in Casing Intermediate	25.00	7450.00	7425.00	25.00	7036.03	0.00	0.00	-1013.04	-292.06
6.125in Open Hole	7488.00	11732.00	4244.00	7036.54	7058.60	-1013.55	-330.05	-1052.05	-4572.20

TARGETS

Name	MD [ft]	TVD [ft]	North [ft]	East [ft]	Grid East [US ft]	Grid North [US ft]	Latitude	Longitude	Shape
KERBS 32N-13HZ BHL ON PLAT REV-1 (2385' FSL & 460' FWL, SEC. 13)		7052.00	-1074.26	-4597.45	3150999.30	1325444.85	40°13'31.728"N	104°57'33.196"W	point
KERBS 32N-13HZ LANDBOX		7052.00	0.00	0.00	3155589.70	1326547.93	40°13'42.348"N	104°56'33.925"W	polygon
SEC.13-T3N-R68W HARD LINES (460' SETBACKS)		7074.00	1001.43	-337.62	3155245.81	1327547.17	40°13'52.244"N	104°56'38.278"W	polygon
SEC.13-T3N-R68W SECTION LINES		7074.00	1001.43	-337.62	3155245.81	1327547.17	40°13'52.244"N	104°56'38.278"W	polygon
SEC.14-T3N-R68W HARD LINES (460' SETBACKS)		7074.00	1001.43	-337.62	3155245.81	1327547.17	40°13'52.244"N	104°56'38.278"W	polygon
SEC.14-T3N-R68W SECTION LINES		7074.00	1001.43	-337.62	3155245.81	1327547.17	40°13'52.244"N	104°56'38.278"W	polygon

WELLPATH COMPOSITION - Ref Wellbore: KERBS 32N-13HZ AWB Ref Wellpath: KERBS 32N-13HZ AWP

Start MD [ft]	End MD [ft]	Positional Uncertainty Model	Log Name/Comment	Wellbore
25.00	974.00	Generic gyro - continuous (Standard)	GYRO SURVEYS <125-974>	KERBS 32N-13HZ AWB
974.00	7428.00	NaviTrak (IFR)	BHI NAVITRAK MWD 8 3/4" <1128-7428>	KERBS 32N-13HZ AWB
7428.00	11666.00	NaviTrak (IFR)	BHI NAVITRAK MWD 6 1/8" <7485-11666>	KERBS 32N-13HZ AWB
11666.00	11732.00	Blind Drilling (std)	Projection to bit	KERBS 32N-13HZ AWB

Actual Wellpath Report

KERBS 32N-13HZ AWP

Page 6 of 6

REFERENCE WELLPATH IDENTIFICATION			
Operator	KERR-MCGEE OIL & GAS ONSHORE LP	Slot	SLOT#12 KERBS 32N-13HZ (1921' FNL & 283' FEL, SEC.13)
Area	COLORADO	Well	KERBS 32N-13HZ
Field	WELD COUNTY (KERR MCGEE)	Wellbore	KERBS 32N-13HZ AWB
Facility	SEC.13-T3N-R68W		

WELLPATH COMMENTS				
MD [ft]	Inclination [°]	Azimuth [°]	TVD [ft]	Comment
25.00	0.000	146.650	25.00	TIE ON
125.00	0.250	146.650	125.00	BEGIN GYRO SURVEYS
974.00	0.580	180.590	973.99	TIE ONTO GYRO SURVEYS
1128.00	0.300	265.910	1127.99	BEGIN BHI MWD+IFR SURVEYS
7450.00	88.835	269.748	7036.03	7" CASING POINT
11666.00	88.550	273.450	7056.93	LAST BHI MWD+IFR SURVEY
11732.00	88.550	273.450	7058.60	PROJECTION TO BIT