

**ANADARKO PETROLEUM CORP - EBUS
DO NOT MAIL - PO BOX 4995
THE WOODLANDS, Texas**

KERBS 32N-13HZ

Majors 29

Post Job Summary **Cement Surface Casing**

Date Prepared: 2/16/2014
Version: 1

Service Supervisor: LAVALLEY, LARRY

Submitted by: TRIER, DEREK

HALLIBURTON

Wellbore Geometry

| Job Tubulars | | | | | MD | | Shoe Joint Length ft |
|-------------------|---------------------------|------------|----------|--------------|-----------|--------------|-------------------------|
| Type | Description | Size in | ID in | Wt lbm/ft | Top ft | Bottom ft | |
| Casing | 9 5/8" Surface Casing | 9.63 | 8.921 | 36.00 | 0.00 | 1,069.00 | 45.00 |
| Open Hole Section | 13 1/2" Open Hole Section | | 13.500 | | 0.00 | 1,069.00 | 0.00 |

HALLIBURTON

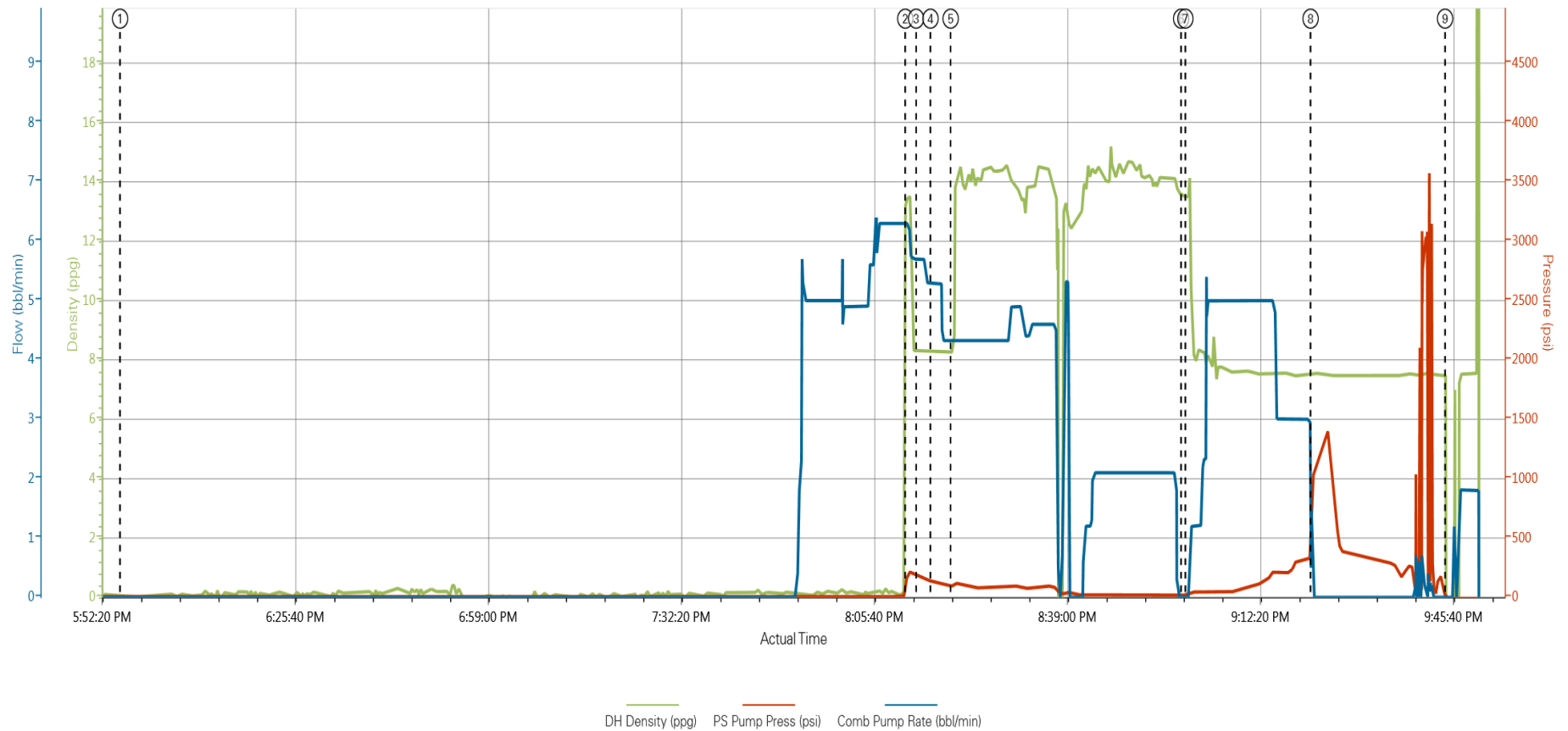
Pumping Schedule

| Stage /Plug # | Fluid # | Fluid Type | Fluid Name | Surface Density lbm/gal | Avg Rate bbl/min | Surface Volume | Downhole Volume |
|---------------|---------|---------------|--------------------|-------------------------|------------------|----------------|-----------------|
| 1 | 1 | Spacer | Fresh Water Spacer | 8.33 | 5.00 | 10.0 bbl | 10.0 bbl |
| 1 | 2 | Spacer | Mud Flush | 8.40 | 5.00 | 12.0 bbl | 12.0 bbl |
| 1 | 1 | Spacer | Fresh Water Spacer | 8.33 | 5.00 | 10.0 bbl | 10.0 bbl |
| 1 | 3 | Cement Slurry | SwiftCem B2 | 14.20 | 5.00 | 419.0 sacks | 419.0 sacks |

HALLIBURTON

Data Acquisition

Custom Results



① Start Job 0.05;7.0 ④ Pump Spacer 1 8.25;130;5.3 ⑦ Pump Displacement 13.5;18;0
 ② Pump Spacer 1 13.51;196;6.3 ⑤ Pump Lead Cement 8.22;95;4.4 ⑧ Bump Plug 7.53;1028;0
 ③ Pump Spacer 2 8.33;184;5.7 ⑥ Drop Top Plug 13.51;19;0 ⑨ End Job -13.74;-8;0

HALLIBURTON

Service Supervisor Reports

Job Log

| Date/Time | Chart # | Activity Code | Pump Rate | Cum Vol | Pump | | Pressure (psig) | | Comments |
|------------------|---------|--|-----------|---------|------|--|-----------------|--------|---|
| 02/05/2014 14:30 | | Wait on HES or HES Sub-Contractor Equipment - Star | | | | | | | 2.5 HRS LATE TO LOCATION DUE TO PROBLEMS WITH LOADING OF CEMENT FROM BULK PLANT |
| 02/05/2014 17:00 | | Arrive at Location from Service Center | | | | | | | DID HAZARD HUNT AND ASSESSMENT OF LOCATION |
| 02/05/2014 17:50 | | Wait on HES or HES Sub-Contractor Equipment - End | | | | | | | |
| 02/05/2014 19:30 | | Pre-Job Safety Meeting | | | | | | | |
| 02/05/2014 19:35 | | Start Job | | | | | | | |
| 02/05/2014 19:36 | | Other | | | | | | | STARTED TO PRIME UP AND RIG TANK VALVE WAS FROZEN THEN HES ROCK CATCHER FROZE AND THEN HT ON PUMP FROZE.GOT ALL UNFROZE AND BEGAN JOB. |
| 02/05/2014 20:11 | | Test Lines | | | | | | | DID NOT TEST DUE TO -3 OUTSIDE TEMP |
| 02/05/2014 20:11 | | Pump Spacer 1 | 5 | 10 | | | | 196.0 | RIG WATER WITH NO ADDITIVES |
| 02/05/2014 20:13 | | Pump Spacer 2 | 5 | 12 | | | | 184.0 | RIG WATER WITH MUDFLUSH III ADDED |
| 02/05/2014 20:15 | | Pump Spacer 1 | 5 | 10 | | | | 130.0 | RIG WATER WITH NO ADDITIVES |
| 02/05/2014 20:19 | | Pump Lead Cement | 5 | 115 | | | | 95.0 | 419 SKS SWIFTCM B2 MIXED @ 14.2 PPG YIELD OF 1.54 FT3/SK AND 7.66 GAL/SK. HAD DELIVERY PROBLEMS FROM BULK TRUCK HAD TO HAND MIX LAST POD OF CEMENT.ALL SCALED WITHEN 2/10TH |
| 02/05/2014 20:59 | | Drop Top Plug | | | | | | | PRELOADED HWE TOP PLUG |
| 02/05/2014 20:59 | | Pump Displacement | 5 | 79 | | | | 408.0 | RIG WATER WITH NO ADDITIVES,SPACER RETURNED TO SURFACE @ 38 BBLS AWAY AND GOT 16 BBLS CEMENT BACK TO SURFACE. |
| 02/05/2014 21:21 | | Bump Plug | 2 | | | | | 1028.0 | CALCULATED PRESSURE TO LAND WAS 405 AND PRESSURE TO LIFT WAS 450 PSI. |
| 02/05/2014 21:25 | | Other | | | | | | | FLOATS DID NOT HOLD LEFT WELL SHUT IN AND WAITED ON LOCATION WITH HEAD AND MANIFOLD. |
| 02/05/2014 21:44 | | End Job | | | | | | | HELD RIG DOWN SAFETY MEETING |

The Road to Excellence Starts with Safety

| | | | |
|--|-------------------------|---|--------------------------|
| Sold To #: 300466 | Ship To #: 3206323 | Quote #: | Sales Order #: 901089608 |
| Customer: ANADARKO PETROLEUM CORP - EBUS | | Customer Rep: Case, Randy | |
| Well Name: KERBS | | Well #: 32N-13HZ | API/UWI #: 05-123-38183 |
| Field: WATTENBERG | City (SAP): PLATTEVILLE | County/Parish: Weld | State: Colorado |
| Lat: N 40.228 deg. OR N 40 deg. 13 min. 42.348 secs. | | Long: W 104.943 deg. OR W -105 deg. 3 min. 26.075 secs. | |
| Contractor: Majors | | Rig/Platform Name/Num: Majors29 | |
| Job Purpose: Cement Surface Casing | | | |
| Well Type: Development Well | | Job Type: Cement Surface Casing | |
| Sales Person: GREGORY, JON | | Srvc Supervisor: LAVALLEY, LARRY | MBU ID Emp #: 419296 |

Job Personnel

| HES Emp Name | Exp Hrs | Emp # | HES Emp Name | Exp Hrs | Emp # | HES Emp Name | Exp Hrs | Emp # |
|------------------|---------|--------|-------------------|---------|--------|---------------|---------|--------|
| BROOM, KENDALL L | 0.0 | 524682 | LAVALLEY, LARRY P | 0.0 | 419296 | STIELER, KENT | 0.0 | 554541 |
| TAMES, ENRIQUE | 0.0 | 123456 | | | | | | |

Equipment

| HES Unit # | Distance-1 way | HES Unit # | Distance-1 way | HES Unit # | Distance-1 way | HES Unit # | Distance-1 way |
|------------|----------------|------------|----------------|------------|----------------|------------|----------------|
| 10994445 | 20 mile | 11410662 | 20 mile | 11488570C | 20 mile | 11518549 | 20 mile |
| 11748359 | 20 mile | 11923776C | 20 mile | | | | |

Job Hours

| Date | On Location Hours | Operating Hours | Date | On Location Hours | Operating Hours | Date | On Location Hours | Operating Hours |
|-------|-------------------|-----------------|--|-------------------|-----------------|------|-------------------|-----------------|
| | | | | | | | | |
| TOTAL | | | Total is the sum of each column separately | | | | | |

Job

| Formation Name | | | | | Job Times | | | |
|------------------------|----------|-------------------|----------|--|---------------|-----------------|-------|-----------|
| Formation Depth (MD) | Top | Bottom | | | Called Out | Date | Time | Time Zone |
| Form Type | | BHST | | | On Location | 05 - Feb - 2014 | 10:00 | MST |
| Job depth MD | 1075. ft | Job Depth TVD | 1069. ft | | Job Started | 05 - Feb - 2014 | 20:00 | MST |
| Water Depth | | Wk Ht Above Floor | 6. ft | | Job Completed | 05 - Feb - 2014 | 21:45 | MST |
| Perforation Depth (MD) | From | To | | | Departed Loc | 05 - Feb - 2014 | 22:30 | MST |

Well Data

| Description | New / Used | Max pressure psig | Size in | ID in | Weight lbm/ft | Thread | Grade | Top MD ft | Bottom MD ft | Top TVD ft | Bottom TVD ft |
|---------------------------|------------|-------------------|---------|-------|---------------|--------|-------|-----------|--------------|------------|---------------|
| 13 1/2" Open Hole Section | | | | 13.5 | | | | . | 1069. | | |
| 9 5/8" Surface Casing | Unknown | | 9.625 | 8.921 | 36. | | J-55 | . | 1069. | | |

Fluid Data

| Stage/Plug #: 1 | | | | | | | | | | | |
|-----------------|------------|------------|--|--|-----|---------|------------------------|---------------------------|------------------|--------------|------------------------|
| Fluid # | Stage Type | Fluid Name | | | Qty | Qty uom | Mixing Density lbm/gal | Yield ft ³ /sk | Mix Fluid Gal/sk | Rate bbl/min | Total Mix Fluid Gal/sk |

| | | | | | | | | | |
|--|--------------------|---------------------------------------|-----------------|-----------------------------------|-----------------|---------------|-----------------|------------------------|------|
| 1 | Fresh Water Spacer | | 10.00 | bbl | 8.33 | | | 5.0 | |
| 2 | Mud Flush | | 12.00 | bbl | 8.4 | | | 5.0 | |
| 3.5 lbm/bbl | | MUD FLUSH III, 40 LB SACK (101633304) | | | | | | | |
| 42 gal/bbl | | MUD FLUSH III - SBM (528788) | | | | | | | |
| 1 | Fresh Water Spacer | | 10.00 | bbl | 8.33 | | | 5.0 | |
| 3 | SwiftCem B2 | SWIFTCEM (TM) SYSTEM (452990) | 419.0 | sacks | 14.2 | 1.54 | 7.66 | 5.0 | 7.66 |
| 7.66 Gal | | FRESH WATER | | | | | | | |
| Calculated Values | | Pressures | | Volumes | | | | | |
| Displacement | | Shut In: Instant | | Lost Returns | | Cement Slurry | | Pad | |
| Top Of Cement | | 5 Min | | Cement Returns | | 16 | | Actual Displacement 79 | |
| Frac Gradient | | 15 Min | | Spacers | | 32 | | Load and Breakdown | |
| Rates | | | | | | | | | |
| Circulating | | Mixing | | Displacement | | 5.0 | | Avg. Job | |
| Cement Left In Pipe | | Amount 45 ft | | Reason | | Shoe Joint | | | |
| Frac Ring # 1 @ | | ID | Frac ring # 2 @ | ID | Frac Ring # 3 @ | ID | Frac Ring # 4 @ | ID | |
| The Information Stated Herein Is Correct | | | | Customer Representative Signature | | | | | |

