

Country USA
 Company **KPK**
 Well **AD Jeffers 1A**
 Field **Spindle**
 County **Weld**
 State **Colorado**
 Location: **AFI #: 05-123-12665**
1980' FNL & 680' FML
SEC 27 TWP 2N RGE 67W
 SW / NW
 Permanent Datum **Ground Level** Elevation **5005**
 Log Measured From **Kelly Bushing**
 Drilling Measured From **Kelly Bushing**
 Other Services

Company **KPK**
 Well **AD Jeffers 1A**
 Field **Spindle**
 County **Colorado**
 State **Colorado**
 Location: **AFI #: 05-123-12665**
1980' FNL & 680' FML
 SEC 27 TWP 2N RGE 67W
 SW / NW
 Permanent Datum **Ground Level** Elevation **5005**
 Log Measured From **Kelly Bushing**
 Drilling Measured From **Kelly Bushing**
 Other Services

Date **May 1, 2014**
 Run Number **1**
 Depth Driller **8230**
 Bottom Logger **1000'**
 Bottom Logged Interval **1000-0'**
 Top Log Interval
 Open Hole Size **water**
 Type Fluid
 Density / Viscosity
 Max. Recorded Temp. **n/a**
 Estimated Cement Top

Time Well Ready
 Time Logger on Bottom
 Equipment Number **3312-111718-Taskco**
 Location **WDRS18+19-S310-Emto**
 Recorded By **Jake Meisner**
 Witnessed By **Paul Anderson**
 Run Number **1** Bit **From** **To** Size **Weight** **From** **To**
 Borehole Record
 Tubing Record
 Casing Record
 Surface Slings
 Production Slings
 Pickoff Slings
 Size **5.5"**
 Material **WAFR1**
 Top
 Bottom

<<< Fold Here >>>

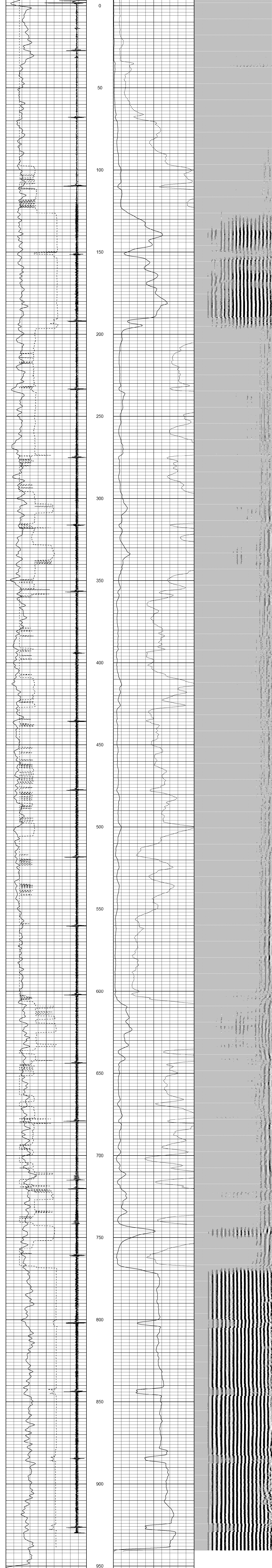
All interpretations are opinions based on inferences from electrical or other measurements and we cannot and do not guarantee the accuracy or correctness of any interpretation, and we shall not, except in the case of gross or willful negligence on our part, be liable or responsible for any loss, costs, damages, or expenses incurred or sustained by anyone resulting from any interpretation made by any of our officers, agents or employees. These interpretations are also subject to our general terms and conditions set out in our current Price Schedule.

Comments

Thank you for choosing Nabors

Database File: **adjeffers 1a.db**
 Dataset Pathname: **pass3**
 Presentation Format: **cbl_drs**
 Dataset Creation: **Thu May 01 08:43:50 2014 by Log Std Casedhole 10081**
 Charted by: **Depth in Feet scaled 1:240**

400 TRAVEL TIME (usec) 200 0 AMP3 (mV) 100 200 VDL 1200
 15 Collar Locator -2 0 Amplified Amp 3 (mV) 10



400 TRAVEL TIME (usec) 200 0 AMP3 (mV) 100 200 VDL 1200
 15 Collar Locator -2 0 Amplified Amp 3 (mV) 10