

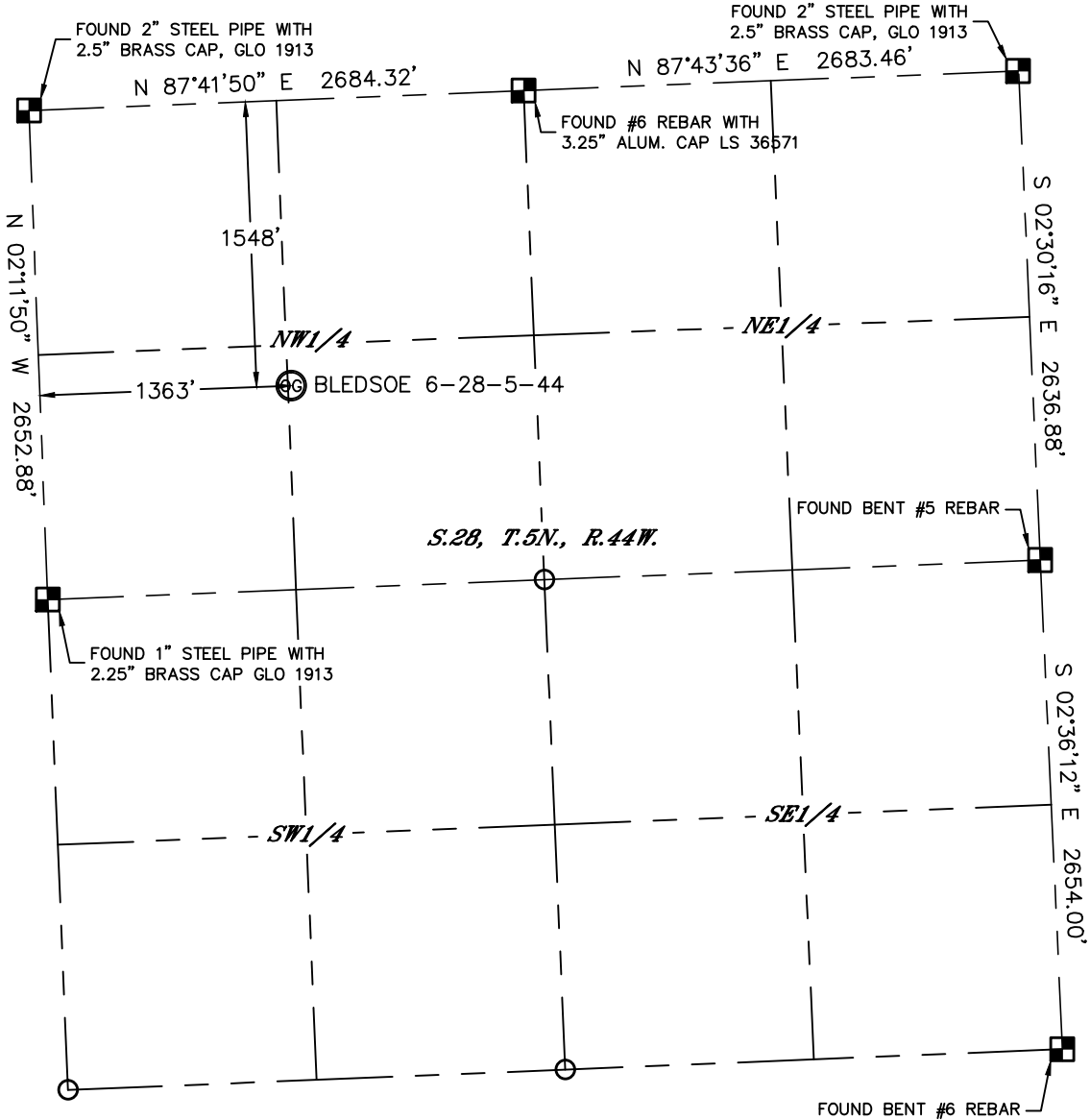


Lat40°, Inc. 1635 Foxtrail Drive, Suite 325 Loveland, CO 970-776-3321

WELL LOCATION CERTIFICATE

SECTION: 28
TOWNSHIP: 5N
RANGE: 44W

THIS MAP DOES NOT REPRESENT A BOUNDARY SURVEY



In accordance with a request from Michelle Lewis with OMIMEX PETROLEUM INC. Lat40°, Inc. has determined the surface location of the BLED SOE 6-28-5-44 to be 1548' from the NORTH line and 1363' from the WEST line as measured at right angles from the section lines of Section 28, Township 5 North, Range 44 West of the Sixth Principal Meridian, County of Yuma, State of Colorado.

I hereby state that this Well Location Certificate was prepared by me, or under my direct supervision, that the fieldwork was completed on 2/26/2014, for and on behalf of OMIMEX PETROLEUM INC. That this is not a Land Survey Plat or an Improvement Survey Plat, and that it is not to be relied upon for establishment of fence, building, or other future improvement lines.

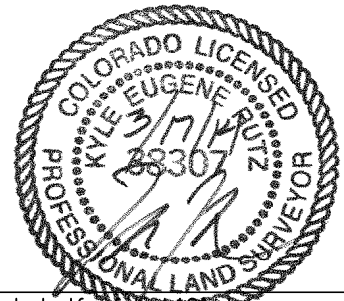
SURFACE LOCATION
 LAT: 40.37705°N
 LONG: 102.27618°W
 PDOP: 2.6
 ELEV: 3736'
 1/4,1/4: SE1/4NW1/4

NOTE:

- 1) Bearings shown are Grid Bearings of the Colorado State Plane Coordinate System, North Zone, North American Datum 1983/2007. The lineal dimensions as contained herein are based upon the "U.S. Survey Foot."
- 2) Ground elevations are based on an observed GPS elevation (NAVD 1988 DATUM).
- 3) IMPROVEMENTS: See LOCATION DRAWING for all visible improvements within 500' of disturbed area.
- 4) SURFACE USE: RANGELAND
- 5) INSTRUMENT OPERATOR: WYATT HALL
- 6) NEAREST CULTURAL ITEMS:
 BUILDING 3835'± E
 BUILDING UNIT 3953'± E
 HIGH OCCUPANCY BUILDING UNIT 5280'+
 DESIGNATED OUTSIDE ACTIVITY AREA 5280'+
 PUBLIC ROAD (HWY 385) 329' NE
 ABOVE GROUND UTILITY 287' NE
 RAILROAD 5280'+
 PROPERTY LINE 297'± NE

LEGEND

- = ALIQUOT MONUMENT AS DESCRIBED
- = CALCULATED POSITION



Kyle E. Rutz—On behalf of Lat40° Inc.
 Colorado Licensed Professional
 Land Surveyor No. 38307

DATE: 3/13/2014
 PROJECT#: 2014018