

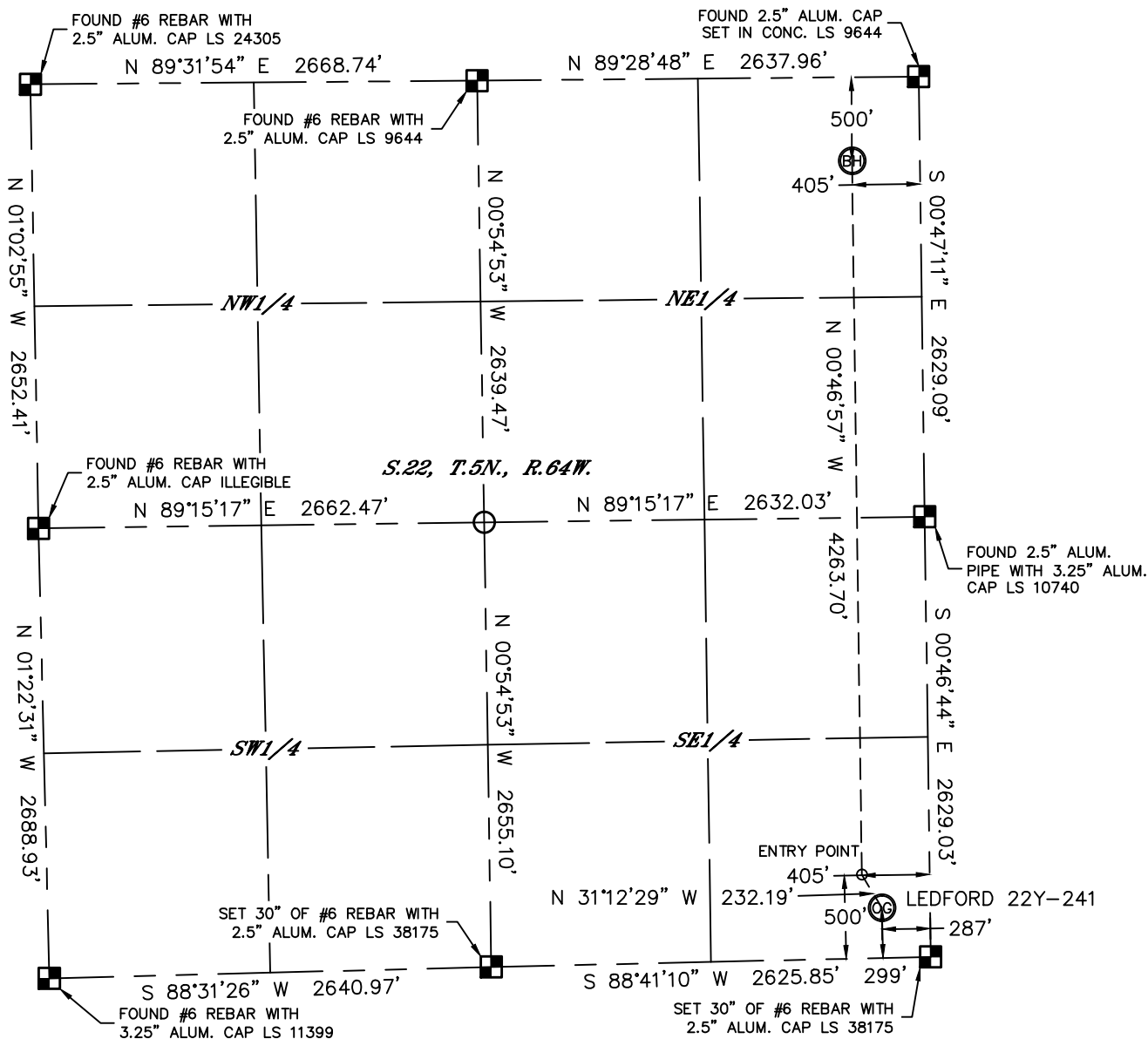


Lat40°, Inc. 1635 Foxtrail Drive, Suite 325 Loveland, CO 970-776-3321

# WELL LOCATION CERTIFICATE

THIS MAP DOES NOT REPRESENT A BOUNDARY SURVEY

SECTION: 22  
TOWNSHIP: 5N  
RANGE: 64W



In accordance with a request from Jake Bragg with PDC ENERGY Lat40°, Inc. has determined the surface location of the LEDFOORD 22Y-241 to be 299' from the SOUTH line and 287' from the EAST line and the bottom hole to be 500' from the NORTH line and 405' from the EAST line as measured at right angles from the section lines of Section 22, Township 5 North, Range 64 West of the Sixth Principal Meridian, County of Weld, State of Colorado.

I hereby state that this Well Location Certificate was prepared by me, or under my direct supervision, that the fieldwork was completed on 12/13/2013, for and on behalf of PDC ENERGY. That this is not a Land Survey Plat or an Improvement Survey Plat, and that it is not to be relied upon for establishment of fence, building, or other future improvement lines.

#### SURFACE LOCATION

LAT: 40.37845°N  
LONG: 104.52740°W  
PDOP: 2.0  
ELEV: 4598'  
1/4,1/4: SE1/4SE1/4

#### BOTTOM HOLE

LAT: 40.39070°N  
LONG: 104.52787°W  
1/4,1/4: NE1/4NE1/4

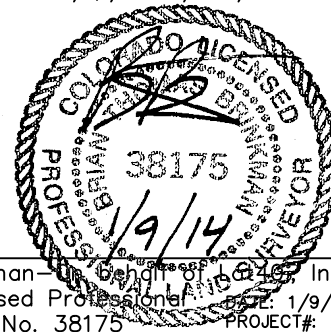
#### ENTRY POINT

LAT: 40.37900°N  
LONG: 104.52783°W  
1/4,1/4: SE1/4SE1/4

#### LEGEND

- = ALIQUOT MONUMENT AS DESCRIBED
- = CALCULATED POSITION

Brian T. Brinkman—on behalf of Lat40°, Inc.  
Colorado Licensed Professional Land Surveyor No. 38175  
DATE: 1/9/2014  
PROJECT#: 2013182



#### NOTE:

- 1) Bearings shown are Grid Bearings of the Colorado State Plane Coordinate System, North Zone, North American Datum 1983/2007. The lineal dimensions as contained herein are based upon the "U.S. Survey Foot."
- 2) Ground elevations are based on an observed GPS elevation (NAVD 1988 DATUM).
- 3) IMPROVEMENTS: See LOCATION DRAWING for all visible improvements within 500' of disturbed area.
- 4) SURFACE USE: CROPLAND
- 5) INSTRUMENT OPERATOR: BRIAN ROTTINGHAUS
- 6) NEAREST CULTURAL ITEMS:  
BUILDING: 521' SE  
BUILDING UNIT: 521' SE  
HIGH OCCUPANCY BUILDING UNIT: 5280'+  
DESIGNATED OUTSIDE ACTIVITY AREA: 5280'+  
PUBLIC ROAD: COUNTY ROAD 57, 286' E  
ABOVEGROUND UTILITY: 265' S  
RAILROAD: ±2060' NE  
PROPERTY LINE: 287' E

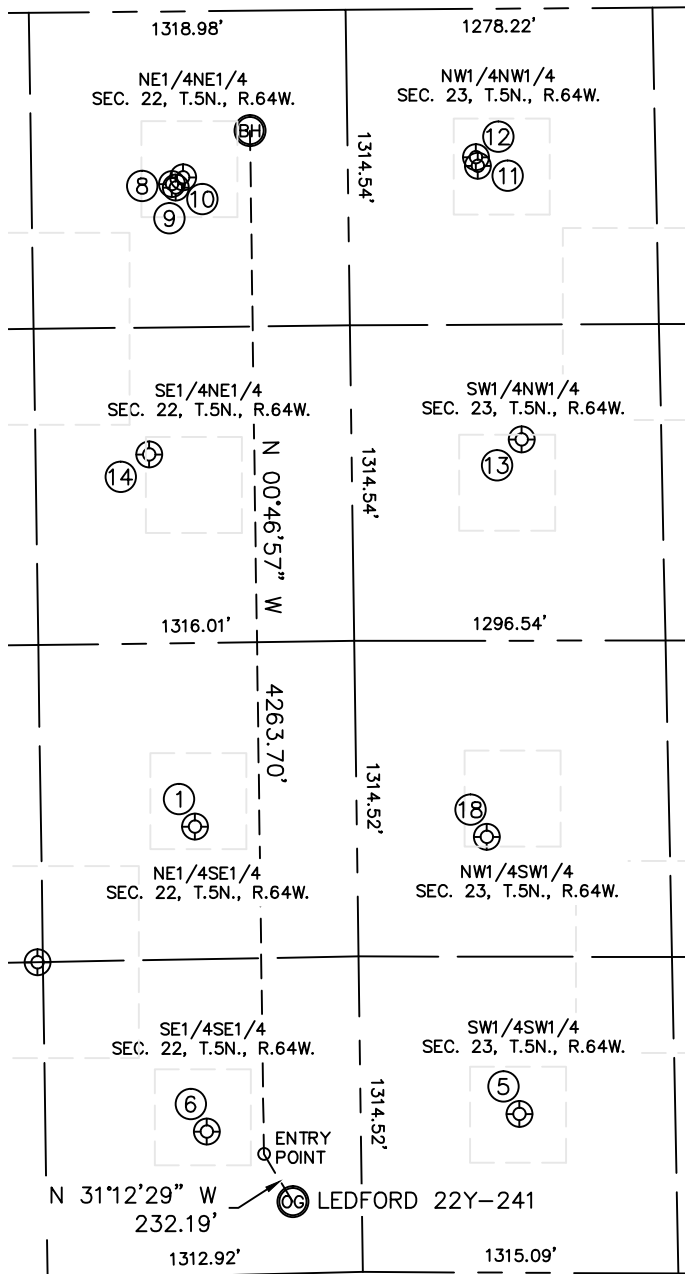


Lat40°, Inc. 1635 Foxtrail Drive, Suite 325 Loveland, CO 970-776-3321

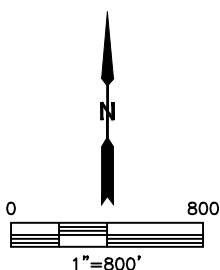
# SITE SKETCH

LEDFORD 22Y-241

SECTION: 22  
TOWNSHIP: 5N  
RANGE: 64W



WELL NO.	WELL NAME	SHL FOOTAGE			ELEV (FT.)	SHL LAT°	SHL LONG°	PDOP	1/4/1/4
1	EMANCIPATOR 22-9	1871	FSL	674	FEL	4603	-104.52881	2.0	NESE
5	UPRC 23-13A	661	FSL	662	FWL	4598	-104.52400	1.6	SWSW
6	EMANCIPATOR 22-16	599	FSL	642	FEL	4600	-104.52868	1.5	SESE
8	DOUGHMAN 22RD	720	FNL	734	FEL	4574	-104.52905	1.6	NENE
9	DOUGHMAN 22VD	735	FNL	718	FEL	4574	-104.52899	1.6	NENE
10	LUCAS 1	692	FNL	686	FEL	4573	-104.52888	1.7	NENE
11	UPRC 23-4A	654	FNL	542	FWL	4571	-104.52447	1.7	NWNW
12	FERGUSON B 23-19	619	FNL	533	FWL	4570	-104.52450	2.1	NWNW
13	UPRC 23-5A	1795	FNL	709	FWL	4577	-104.52386	1.6	SWNW
14	P & H 22-42	1845	FNL	843	FEL	4580	-104.52943	2.7	SENE
18	UPRC 23-12A	1814	FSL	541	FWL	4603	-104.52445	2.1	NWSW



DATE: 1/9/2014  
PROJECT#: 2013182