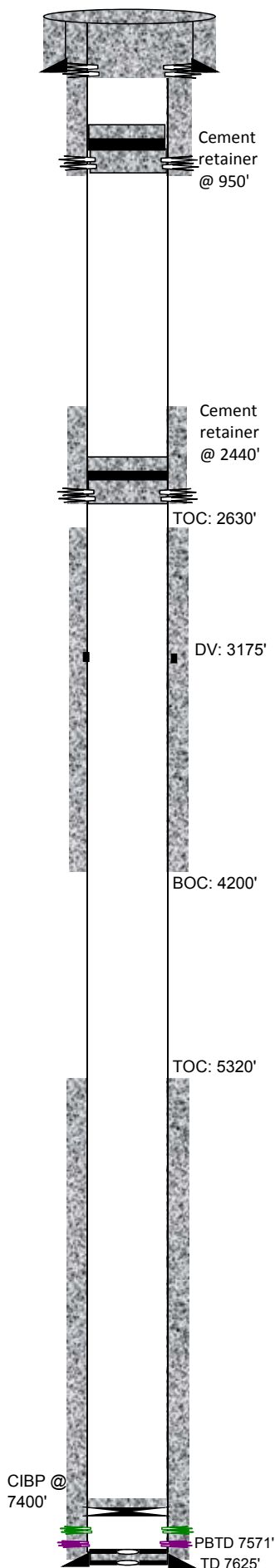




# Black Hills Plateau Production, LLC

A Black Hills Corporation Enterprise



General Well Info		Diagram Date:	Updated 5/2/14 by jad
Well Name:	Federal 22-1	Field:	HSC
Srf Location:	NENE 22 9S 97W 6PM	County:	Mesa
Lease # (BLM):	C-14473	State:	Colorado
API #:	05-077-08554	Spud Date:	10/21/1983
GL Elev:	5242'	TD Date:	11/6/1983
KB Elev:	5254'	Compl Date:	12/18/1983
Formation Tops			
Zone	Depth	Zone	Depth
CAMEO	2504'	DAKOTA	7314'
ROLLINS	2665'	CEDAR MTN	7479'
COZZETTE	2898'	MORRISON	7550'
CORCORAN	3106'		
MANCOS	3292'		

## Surface casing (10/22/83):

9 5/8" (9jts) 36# set @ 354' (13 3/4" hole)  
310sx Class H, CaCl w/ 1/4#/sk Flocele – good circ  
TOC @ srf

## Production casing (11/11/83):

4 1/2" 189 jts 11.6# J55 LT&C set @ 7625', FC @ 7571', DV at 3226' (8 3/4" hole)  
1st Stage: 455sx 65/35 Poz, tail w/255sx Class H, 2% CaCl w/ 1/4#/sk Flocele  
2nd Stage: 487 sx 65/35 Poz, rec 6 bbl  
TOC @ ?' (CBL was ran 12/22/83- not in wellfile, COGCC website, or BLM file)  
1/9/09 CBL: TOC 5320', 2<sup>nd</sup> stage bottom at 4200' top at 2630', DV at 3175' and cmt bottom

## Production tubing (12/??/83):

??? jts 2 3/8", ?? SN, ?? NC  
EOT @ 7534"??

## PROPOSED P&A PROCEDURE

- Set 4 1/2" CIBP @ +/-7400' (within 100' of Dakota top perf at 7468'), dump bail 2 sx cmt on top of plug.
- If casing leaks found:
- Set cement retainer 50' above top of csg leak hole.
- Pump 45sx class III cmt below retainer, leave 5sx G cmt on top of retainer. Reverse circ clean, if possible.
- Perf 4 circ holes @ 2490'. Set cmt retainer @ 2440'. Pump 45 sx Class III cmt below retainer. Dump 5 sx cmt on top.
- Perf 4 circ holes @ 1000'. Set cmt retainer @ 950'. Pump 45 sx Class III cmt below retainer. Dump 5 sx G cmt on top.
- Perf 4 circ holes @ 404'. Pump 100 sx Class III. Circ cmt to surf. Leave 4 1/2" csg full of cmt.
- WOC. Top off as needed.
- Dig out wellhead. Cut off 9 5/8" and 4 1/2" csg 4' below ground level. Install dry hole marker plate as per COGCC.
- Reclaim location. File necessary sundries

DKTA (12/22/83) 7468, 7471, (0.35" ehd, 1spf, 2 holes)

CDMTN (12/22/83) 7484', 7486', 7488', 7494', 7497', 7503', 7505', 7514', 7522', 7525', 7527', 7534', 7536', 7538', 7540', 7544', 7546', 7548'(0.35" ehd, 1spf, 18 holes)

♦ 12/23/83 2 3/8" tbg w/pkr at 7430', Acidize DK/CM w/1000gal 7 1/2% w/ 40bs – brk dn @?, balled off, surge balls, inj rate 7 bpm at 5200 psi

♦ 12/24/83 Frac DAK/CDMT w/903 bbls Polaris Gel, 600 scf CO2/bbl, 541,800 scf CO2, 36,960# 20/40, 1-2 ppg, attempt to screen out but could not, ISIP: 3900 psi, 5 min 2000 psi, 30 min 1000 psi. Flow 3 days, CP: 60-100 psi, ck: 3/4". ATR: 25 bpm, ATP: 3