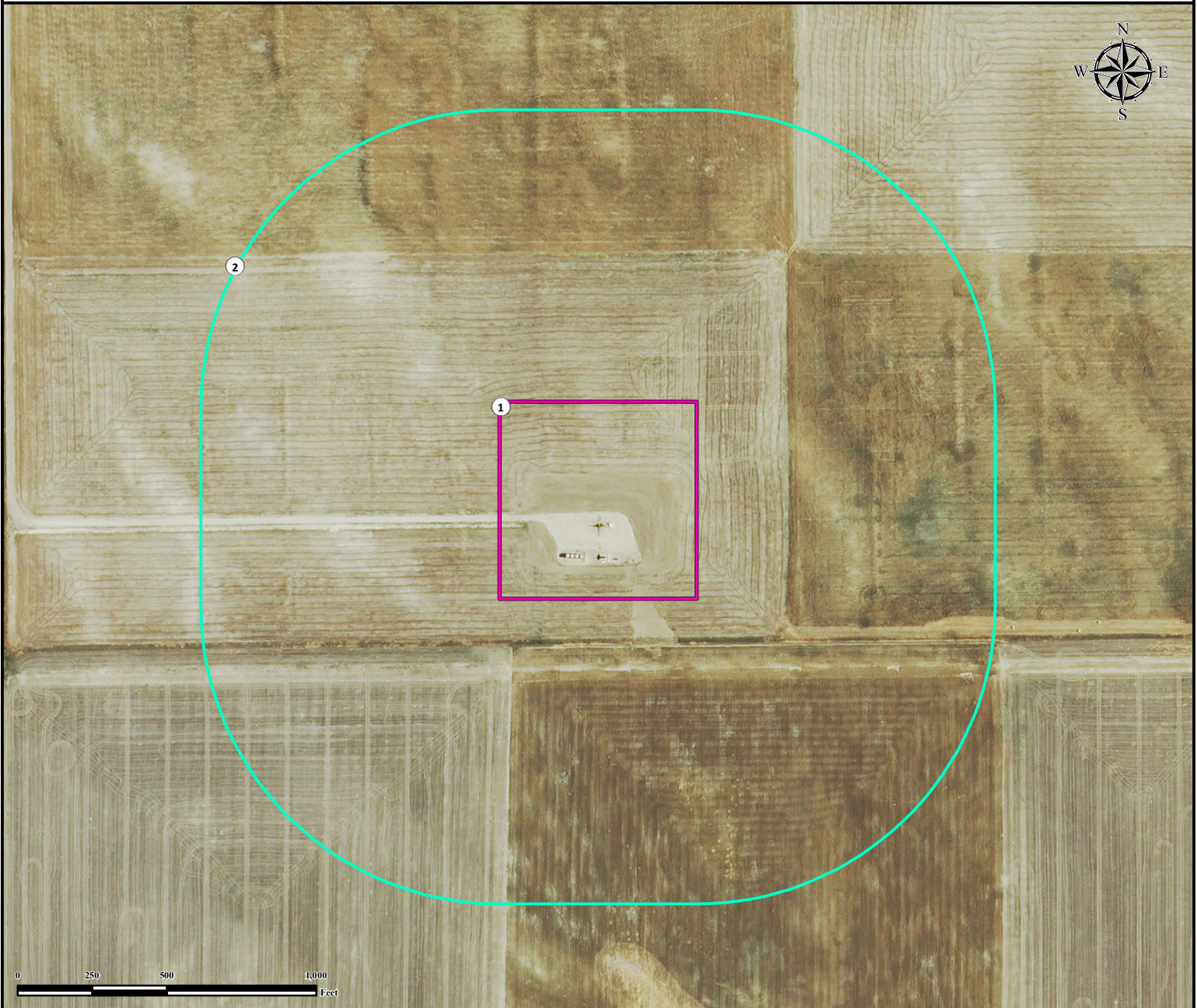


INTERNAL USE ONLY

GREEN 1-1H

NOTIFICATION DRAWING

SE¼ SW¼ SECTION 1, TOWNSHIP 7 NORTH, RANGE 60 WEST OF THE 6TH PRINCIPAL MERIDIAN



Building

Building Unit

1. Operational Disturbance Area.
2. 1000' Radius.

Legend



Disturbance Area



500' Radius

Reference Location

**** All measurements are made from
THE CLOSEST POINT TO THE
DISTURBANCE BOUNDARY ****



Use our resources to find yours!
www.petro-fs.com
(303) 928-7128

Field Date: 04/15/2014
Drafting Date: 04/22/2014
Drafter: DRF
Revision:

Data Sources:
- Aerial courtesy of NAIP (2011)

Surface Use: Dryland Crop

Prepared for:
RED HAWK PETROLEUM